

Low Pass Filter

LPF-EDU1017

Surface Mount

Important Note

This model has been designed, built and tested in our engineering department. Performance data represents model capability. At present it is a non-catalog model. On request, we can supply a final specification sheet, part number and price/delivery information.

Please click "Back", and then click "Contact Us" for Applications support.



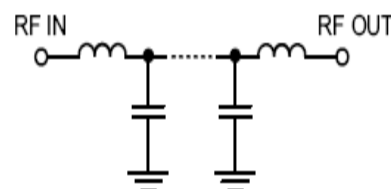
CASE STYLE : HZ1198

ELECTRICAL SPECIFICATIONS 50Ω @ +25°C

Parameter	Min.	Typ.	Max.	Units
Passband (Loss < 1.2 dB)	DC		0.6	MHz
Insertion loss 3dB		0.820		MHz
Stopband (Loss > 20 dB)	0.995		1.12	MHz
(Loss > 40 dB)	1.12		1400	MHz
Passband VSWR		1.2	1.5	(:1)
Stopband VSWR		20		(:1)

Functional Schematic

MAXIMUM RATINGS	
Operating Temperature	-40°C to 85°C
Storage Temperature	-55°C to 100°C
RF Power Input	1 W



PIN CONNECTIONS

Input	1
Output	2
Not Connected	-
Case Ground	3,4,5,6