

# Low Pass Filter

## Surface Mount

LPF-EDU1330+

**Important Note**

This model has been designed, built and tested in our engineering department. Performance data represents model capability. At present it is a non-catalog model. On request, we can supply a final specification sheet, part number and price/delivery information.



Please click "Back", and then click "Contact Us" for Applications support.

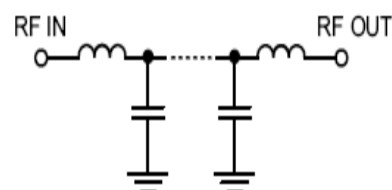
CASE STYLE : HQ1157

**ELECTRICAL SPECIFICATIONS 75Ω @ +25°C**

Parameter	Min.	Typ.	Max.	Units
Passband (Loss < 1.8 dB)	1		1000	MHz
Insertion loss 3dB		1035		MHz
Stopband (Loss > 20 dB)	1135		4000	MHz
(Loss > 40 dB)	1200		2600	MHz
Absolute Group Delay in the pass band		4.5	8	nS
Passband VSWR		1.4	1.7	(:1)
Stopband VSWR		20		(:1)

**Functional Schematic**

MAXIMUM RATINGS	
Operating Temperature	-40°C to 85°C
Storage Temperature	-55°C to 100°C
RF Power Input	0.5 W

**PIN CONNECTIONS**

Input	1
Output	8
Not Connected	-
Case Ground	3,4,5,6,7,9,10,11,12,13,14