



Mini-Circuits

MMIC SURFACE MOUNT

Monolithic Amplifier

MAR-2SM+

50Ω DC to 2 GHz

FEATURES

- Wideband, DC to 2 GHz
- Exact Footprint Substitute for Avago's MSA-0286
- Internally Matched to 50Ω
- Unconditionally Stable
- Protected by US Patent, 6,943,629



Generic photo used for illustration purposes only

CASE STYLE: WW107

+RoHS Compliant

The +Suffix identifies RoHS Compliance.
See our website for methodologies and qualifications

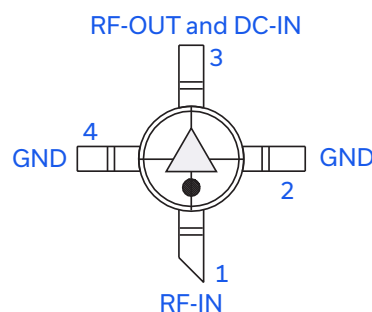
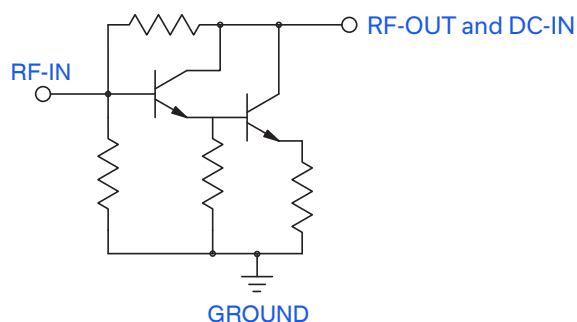
APPLICATIONS

- Cellular
- PCN Instrumentation
- VHF/UHF Receivers/Transmitters

PRODUCT OVERVIEW

MAR-2SM+ (RoHS compliant) is a wideband amplifier offering high dynamic range. It has repeatable performance from lot to lot. It is enclosed in a Micro-X package. MAR-2SM+ uses Darlington configuration and is fabricated using InGaP HBT technology. Expected MTTF is 10,000 years at +85°C case temperature.

SIMPLIFIED SCHEMATIC AND PIN DESCRIPTION



| Function | Pin Number | Description |
|------------------|------------|--|
| RF-IN | 1 | RF input pin. This pin requires the use of an external DC blocking capacitor chosen for the frequency of operation. |
| RF-OUT and DC-IN | 3 | RF output and bias pin. DC voltage is present on this pin; therefore a DC blocking capacitor is necessary for proper operation. An RF choke is needed to feed DC bias without loss of RF signal due to the bias connection, as shown in "Recommended Application Circuit". |
| GND | 2,4 | Connections to ground. Use via holes as shown in "Suggested Layout for PCB Design" to reduce ground path inductance for best performance. |

Mini-Circuits



MMIC SURFACE MOUNT

Monolithic Amplifier

MAR-2SM+

Mini-Circuits

50Ω DC to 2 GHz

ELECTRICAL SPECIFICATIONS AT +25°C AND 25 mA UNLESS NOTED OTHERWISE

| Parameter | Conditions (GHz) | Min. | Typ. | Max. | Units |
|---|------------------|------|----------------------|------|-------|
| Frequency Range ¹ | | DC | | 2 | GHz |
| Gain | 0.1 1 2 | | 12.5 12.0 11.0 | | dB |
| Input Return Loss | DC - 2 | | 17.5 | | dB |
| Output Return Loss | DC - 2 | | 17.5 | | dB |
| Output Power @ 1 dB Compression | 1 | | +7 | | dBm |
| Output IP3 | 1 | | +22 | | dBm |
| Noise Figure | 1 | | 3.7 | | dB |
| Recommended Device Operating Current | | | 25 | | mA |
| Device Operating Voltage | | | +5.0 | | V |
| Device Voltage Variation vs. Temperature at 25 mA | | | -2.7 | | mV/°C |
| Device Voltage Variation vs. Current at +25°C | | | 16.7 | | mV/mA |
| Thermal Resistance, Junction-to-Case ³ | | | 164 | | °C/W |

1. Guaranteed specification DC-2 GHz. Low frequency cut off determined by external coupling capacitors.

2. Full temperature range.

3. Case is defined as ground leads.

ABSOLUTE MAXIMUM RATINGS

| Parameter | Ratings |
|-----------------------|-----------------|
| Operating Temperature | -40°C to +85°C |
| Storage Temperature | -55°C to +100°C |
| Operating Current | 60 mA |
| Power Dissipation | 325 mW |
| Input Power | +13 dBm |

Permanent damage may occur if any of these limits are exceeded. These ratings are not intended for continuous normal operation.





Mini-Circuits

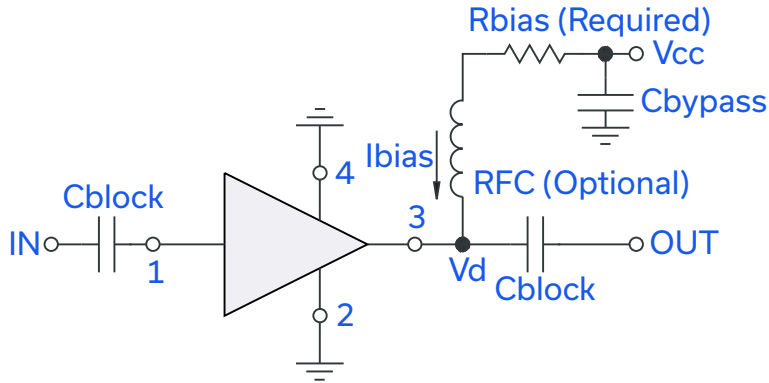
MMIC SURFACE MOUNT

Monolithic Amplifier

MAR-2SM+

50Ω DC to 2 GHz

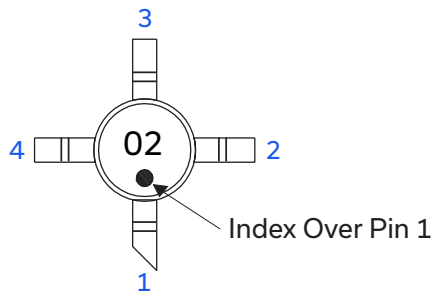
RECOMMENDED APPLICATION CIRCUIT



Test Board includes case, connectors, and components (in bold) soldered to PCB

| R BIAS | |
|--------|--|
| Vcc | "1%" Res. Values (Ohms) for Optimum Biasing |
| 7 | 80.6 |
| 8 | 121 |
| 9 | 162 |
| 10 | 200 |
| 11 | 243 |
| 12 | 280 |
| 13 | 324 |
| 14 | 357 |
| 15 | 402 |

PRODUCT MARKING



Markings in addition to model number designation may appear for internal quality control purposes.





MMIC SURFACE MOUNT

Monolithic Amplifier

MAR-2SM+

50Ω DC to 2 GHz

ADDITIONAL DETAILED TECHNICAL INFORMATION IS AVAILABLE ON OUR DASHBOARD. [CLICK HERE](#)

| | |
|--|--|
| Performance Data & Graphs | Data Table |
| | Swept Graphs |
| | S-Parameter Data Set (.zip file) |
| Case Style | WW107 Plastic micro-x package, 0.085 body diameter, Lead Finish: Matte-Tin |
| Tape & Reel Standard Quantities Available on Reel | F4 7" Reels with 20, 50, 100, 200, 500 or 1K devices |
| Suggested Layout for PCB Design | PL-253 |
| Evaluation Board | TB-411-2+ |
| Environmental Ratings | ENV08T3 |

ESD RATING

Human Body Model (HBM): Class 1B (500 V to < 1,000 V) in accordance with ANSI/ESD STM 5.1 - 2001

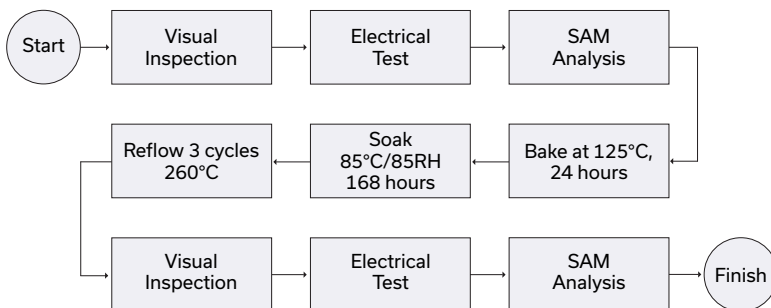
Machine Model (MM): Class M1 (< 100 V) in accordance with ESD STM 5.2 - 1999

MSL RATING

Moisture Sensitivity: MSL1 in accordance with IPC/JEDECJ-STD-020C

| No. | Test Required | Condition | Standard | Quantity |
|-----|---------------------------------|---|--------------------------------|----------|
| 1 | Visual Inspection | Low Power Microscope Magnification 40x | MIP-IN-0003 (MCT spec) | 45 units |
| 2 | Electrical Test | Room Temperature | SCD (MCL spec) | 45 units |
| 3 | SAM Analysis | Less than 10% growth in term of delamination | J-Std-020C (Jedec Standard) | 45 units |
| 4 | Moisture Sensitivity Level 1 | Bake at 125°C for 24 hours Soak at 85°C/85%RH for 168 hours Reflow 3 cycles at 260°C peak | J-Std-020C (Jedec Standard) | 45 units |

MSL TEST FLOW CHART



NOTES

- Performance and quality attributes and conditions not expressly stated in this specification document are intended to be excluded and do not form a part of this specification document.
- Electrical specifications and performance data contained in this specification document are based on Mini-Circuits' applicable established test performance criteria and measurement instructions.
- The parts covered by this specification document are subject to Mini-Circuits' standard limited warranty and terms and conditions (collectively, "Standard Terms"); Purchasers of this part are entitled to the rights and benefits contained therein. For a full statement of the standard terms and the exclusive rights and remedies thereunder, please visit Mini-Circuits' website at www.minicircuits.com/terms/viewterm.html

