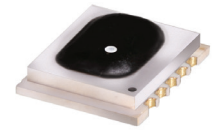


# Frequency Mixer WIDE BAND

## MCA1T-60MH+

Level 13 (LO Power+13 dBm) 1700 to 6000 MHz



CASE STYLE: DZ885-2

### Maximum Ratings

Operating Temperature	-40°C to 85°C
Storage Temperature	-40°C to 85°C
RF Power	200 mW
IF Current	40 mA

Permanent damage may occur if any of these limits are exceeded.

### Pin Connections

LO	10
RF	5
IF	3
GROUND	1,2,4,6,7,8,9

### Features

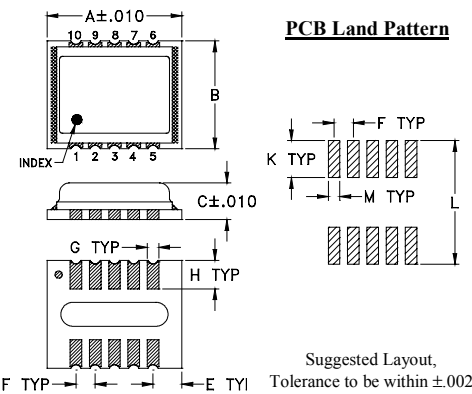
- wide bandwidth, 1700 to 6000 MHz
- useable to 8000 MHz
- low conversion loss, 6.2 dB typ.
- IF, DC to 2000 MHz
- LTCC double balanced mixer
- aqueous washable
- low cost
- low profile, 0.095"
- protected by US Patent 7,027,795 & 8,749,989

### Applications

- PCN
- defense & weather radar
- WCDMA
- defense communications

**+RoHS Compliant**  
The +Suffix identifies RoHS Compliance. See our web site for RoHS Compliance methodologies and qualifications

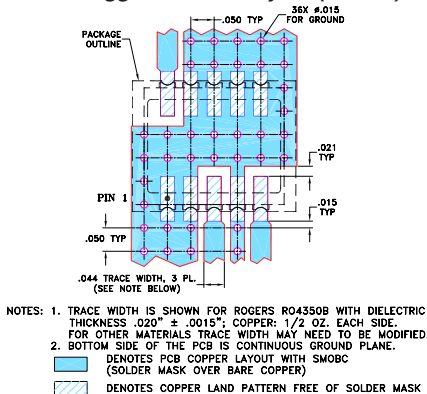
### Outline Drawing



### Outline Dimensions (inch/mm)

A	B	C	E	F	G
.350	.280	.095	.075	.050	.030
8.89	7.11	2.41	1.91	1.27	0.76
H	K	L	M	wt	
.074	.096	.321	.030	grams	
1.88	2.44	8.15	0.76	0.21	

### Demo Board MCL P/N: TB-493+ Suggested PCB Layout (PL-288)



- NOTES: 1. TRACE WIDTH IS SHOWN FOR ROGERS RO4350B WITH DIELECTRIC THICKNESS .020" ± .0015"; COPPER: 1/2 OZ. EACH SIDE. FOR OTHER MATERIALS TRACE WIDTH MAY NEED TO BE MODIFIED.  
2. BOTTOM SIDE OF THE PCB IS CONTINUOUS GROUND PLANE.  
■ DENOTES PCB COPPER LAYOUT WITH SMOBC (SOLDER MASK OVER BARE COPPER)  
■ DENOTES COPPER LAND PATTERN FREE OF SOLDER MASK

### Notes

- A. Performance and quality attributes and conditions not expressly stated in this specification document are intended to be excluded and do not form a part of this specification document.  
B. Electrical specifications and performance data contained in this specification document are based on Mini-Circuit's applicable established test performance criteria and measurement instructions.  
C. The parts covered by this specification document are subject to Mini-Circuit's standard limited warranty and terms and conditions (collectively, "Standard Terms"); Purchasers of this part are entitled to the rights and benefits contained therein. For a full statement of the Standard Terms and the exclusive rights and remedies thereunder, please visit Mini-Circuit's website at [www.minicircuits.com/MCLStore/terms.jsp](http://www.minicircuits.com/MCLStore/terms.jsp)

### Electrical Specifications (T<sub>AMB</sub> = -40°C to 85°C)

FREQUENCY (MHz)		CONVERSION LOSS (dB)			LO-RF ISOLATION (dB)		LO-IF ISOLATION (dB)		IP3 at center band (dBm)
LO/RF f <sub>c</sub> -f <sub>u</sub>	IF	$\bar{X}$	$\sigma$	Max.	Typ.	Min.	Typ.	Min.	Typ.
1700-4400	DC-2000	6.9	0.1	8.5*	32	25	17	—	15
4400-6000	DC-2000	6.0	0.1	8.5*	22	18	15	—	15

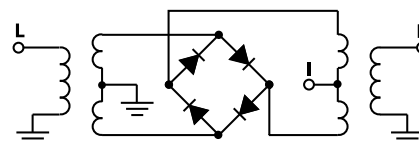
1 dB COMPR. +9 dBm typ.

\*Conversion loss at 30 MHz IF, increases with IF frequency. See Graphs

### Typical Performance Data

Frequency (MHz)		Conversion Loss (dB)	Isolation L-R (dB)	Isolation L-I (dB)	VSWR RF Port (:1)	VSWR LO Port (:1)
RF	LO	LO +13dBm	LO +13dBm	LO +13dBm	LO +13dBm	LO +13dBm
1700.00	1730.00	6.18	33.91	19.47	2.33	3.42
1852.00	1882.00	6.14	41.44	21.06	2.97	2.63
1950.00	1980.00	6.07	39.06	21.18	3.05	2.37
2048.00	2078.00	6.17	36.29	20.34	3.23	2.14
2440.00	2470.00	5.79	30.82	17.17	2.36	1.82
2930.00	2960.00	6.94	32.17	16.63	3.97	2.79
3028.00	3058.00	7.04	32.07	16.81	4.16	3.06
3126.00	3156.00	6.98	31.54	16.89	4.07	3.31
3616.00	3646.00	7.03	31.17	16.93	3.58	4.77
3812.00	3842.00	7.23	31.05	16.38	3.15	5.18
3910.00	3940.00	7.44	32.15	15.92	2.89	5.12
4008.00	4038.00	7.41	32.79	15.36	2.65	4.55
4106.00	4136.00	6.85	32.03	16.77	2.25	5.31
4204.00	4234.00	6.89	32.59	17.02	2.25	5.44
4746.00	4776.00	7.02	24.57	16.93	2.45	2.35
4818.00	4848.00	6.79	22.91	16.94	2.50	1.92
5034.00	5064.00	6.64	20.31	16.62	2.07	1.28
5538.00	5568.00	6.51	19.98	16.79	2.28	3.45
5898.00	5928.00	7.54	22.45	13.18	3.53	8.46
6000.00	6030.00	8.18	23.35	13.31	3.95	9.62

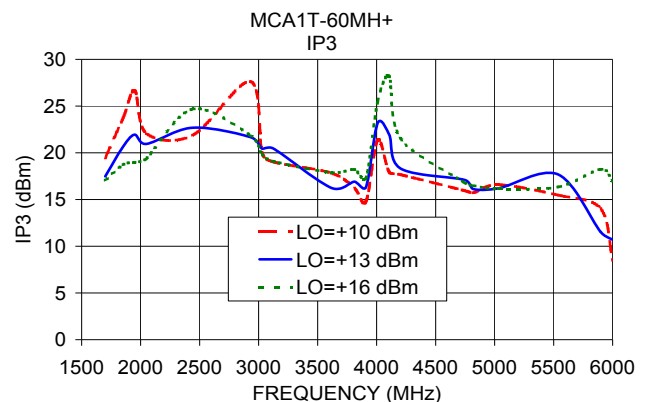
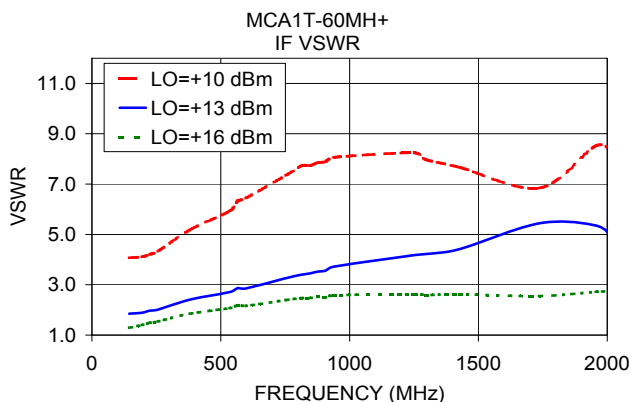
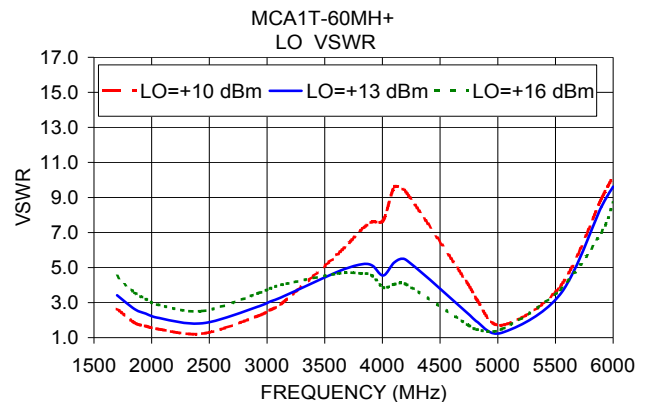
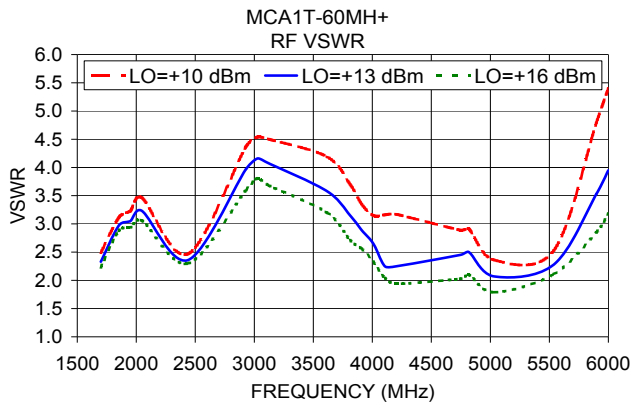
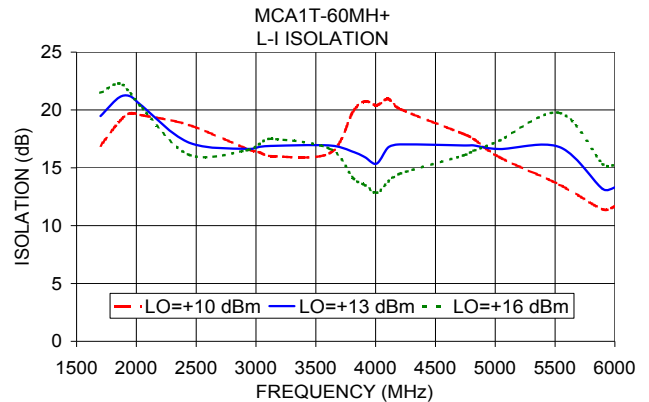
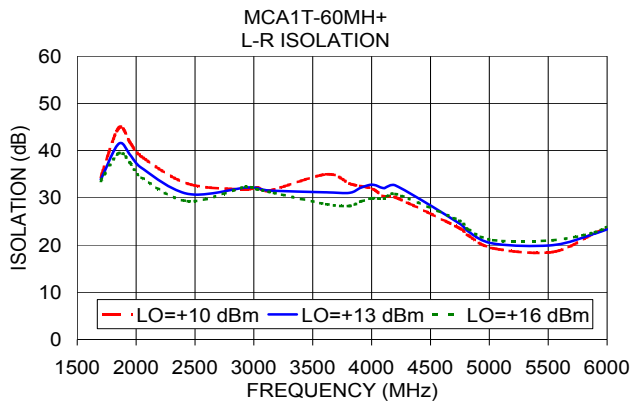
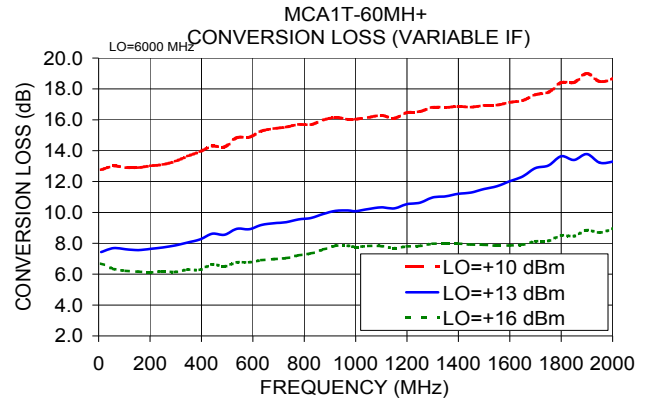
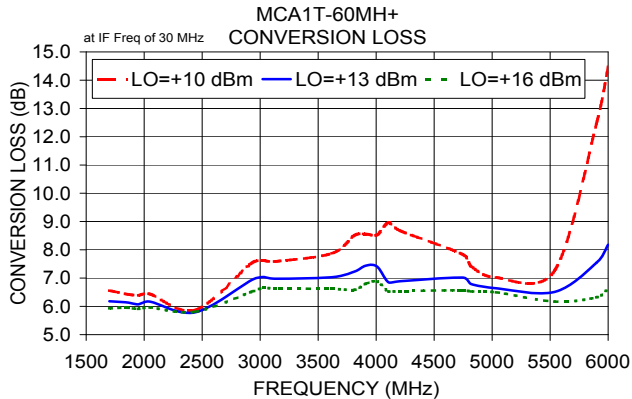
### Electrical Schematic



# NON-CATALOG

## Performance Charts

## MCA1T-60MH+



**Notes**

- A. Performance and quality attributes and conditions not expressly stated in this specification document are intended to be excluded and do not form a part of this specification document.
- B. Electrical specifications and performance data contained in this specification document are based on Mini-Circuit's applicable established test performance criteria and measurement instructions.
- C. The parts covered by this specification document are subject to Mini-Circuits standard limited warranty and terms and conditions (collectively, "Standard Terms"); Purchasers of this part are entitled to the rights and benefits contained therein. For a full statement of the Standard Terms and the exclusive rights and remedies thereunder, please visit Mini-Circuits' website at [www.minicircuits.com/MCLStore/terms.jsp](http://www.minicircuits.com/MCLStore/terms.jsp)

