

# Non-Catalog Model

## Frequency Mixer

Level 7 (LO Power +7 dBm)

**ML-1+**  
**ML-1**



CASE STYLE: A01

### Important Note

This is a non-catalog model and can be manufactured on specific request. Pricing and delivery information can be supplied upon request.

Please click "Back", and then click "Contact Us" for Applications support.

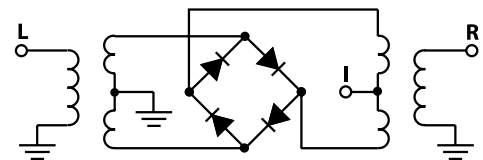
**+ RoHS compliant in accordance with EU Directive (2002/95/EC)**

The +Suffix identifies RoHS Compliance. See our web site for RoHS Compliance methodologies and qualifications.

ELECTRICAL SPECIFICATIONS 50Ω @+25°C					
Parameter		Min.	Typ.	Max.	Units
LO/RF Frequency		0.5		500	MHz
IF Frequency		DC		500	MHz
Conversion Loss			6.5	8.5	dB
L-R Isolation	low range	45	50		dB
	mid range	30	45		dB
	upper range	25	35		dB
L-I Isolation	low range	35	45		dB
	mid range	25	40		dB
	upper range	20	30		dB
1dB Comp. Input Power			+1		dBm

MAXIMUM RATINGS	
Operating Temperature	-55°C to 100°C
Storage Temperature	-55°C to 100°C

### Electrical Schematic



PIN CONNECTIONS	
LO	8
RF	1
IF	3,4
GROUND	2,5,6,7



P.O. Box 350166, Brooklyn, New York 11235-0003 (718) 934-4500 Fax (718) 332-4661 For detailed performance specs & shopping online see Mini-Circuits web site



The Design Engineers Search Engine Provides ACTUAL Data Instantly From MINI-CIRCUITS At: [www.minicircuits.com](http://www.minicircuits.com)

RF/IF MICROWAVE COMPONENTS

REV. OR  
M114087  
ML-1  
071029