

Low Pass Filter

NBLP-10-1+

50Ω DC to 6 MHz



Features

- Flat group delay for low pulse distortion
- Rugged shielded case
- Other NBLP models available with wide selection of cut-off frequencies

Applications

- Linear modulation techniques
- Voice transmission applications
- Digital communications

Connectors	Model	Price	Qty.
N Male/Female	NBLP-10-1+	\$76.95 ea.	(10)
		\$69.95 ea.	(25)

Electrical Specifications at 25°C

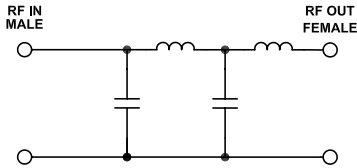
Parameter	F#	Frequency (MHz)	Min.	Typ.	Max.	Unit	
Pass Band	Insertion Loss	DC-F2	DC-6	—	1	1.6	dB
	Freq. Cut-Off	F4	10	—	3	—	dB
	VSWR	DC-F1	DC-2	—	1.4	1.5	:1
	VSWR	DC-F3	DC-6	—	2.7	3.11	:1
Stop Band	Rejection Loss	F5	20	10	13	—	dB
	VSWR	F5	20	—	50	—	:1
Group Delay Variation	DC-F4	DC-10	—	0.7	—	ns	

Maximum Ratings

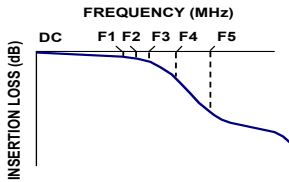
Operating Temperature	-55°C to 100°C
Storage Temperature	-55°C to 100°C
RF Power Input	0.5W max.

Permanent damage may occur if any of these limits are exceeded.

Functional Schematic



Typical Frequency Response

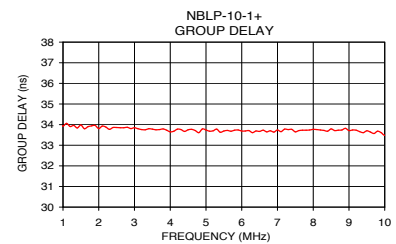
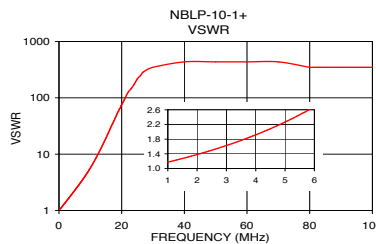
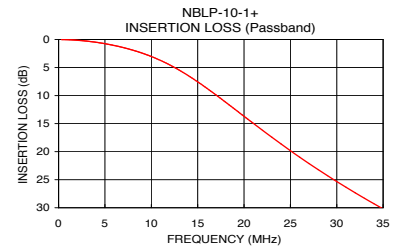
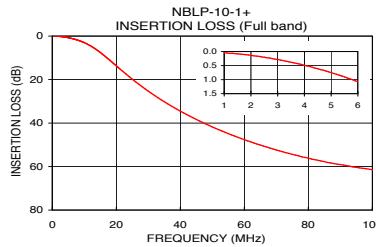


Typical Performance Data at 25°C

Frequency (MHz)	Insertion Loss (dB)	VSWR (:1)	Frequency (MHz)	Group Delay (nsec)
1.0	0.04	1.17	1.00	33.93
1.2	0.06	1.21	1.50	33.98
1.5	0.08	1.27	2.00	33.81
2.0	0.13	1.38	2.50	33.86
2.2	0.16	1.43	3.00	33.85
2.5	0.20	1.50	3.50	33.78
3.0	0.28	1.63	4.00	33.65
3.4	0.36	1.74	4.50	33.75
3.6	0.40	1.80	5.50	33.69
3.8	0.44	1.86	5.80	33.73
4.0	0.49	1.92	6.00	33.69
5.0	0.75	2.27	6.40	33.69
6.0	1.07	2.68	6.80	33.70
10.0	3.03	5.68	7.00	33.74
12.0	4.54	8.90	7.50	33.65
15.0	7.55	19.32	8.00	33.77
20.0	13.69	75.53	8.50	33.79
30.0	25.33	347.44	9.00	33.71
70.0	52.39	434.30	9.50	33.70
100.0	61.44	347.44	10.00	33.48

+ RoHS compliant in accordance with EU Directive (2002/95/EC)

The +Suffix has been added in order to identify RoHS Compliance. See our web site for RoHS Compliance methodologies and qualifications.



For detailed performance specs & shopping online see web site

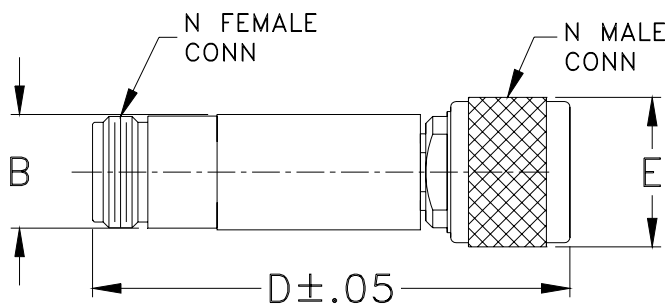
P.O. Box 350166, Brooklyn, New York 11235-0003 (718) 934-4500 Fax (718) 332-4661 The Design Engineers Search Engine Provides ACTUAL Data Instantly at minicircuits.com

Notes: 1. Performance and quality attributes and conditions not expressly stated in this specification sheet are intended to be excluded and do not form a part of this specification sheet. 2. Electrical specifications and performance data contained herein are based on Mini-Circuit's applicable established test performance criteria and measurement instructions. 3. The parts covered by this specification sheet are subject to Mini-Circuits standard limited warranty and terms and conditions (collectively, "Standard Terms"); Purchasers of this part are entitled to the rights and benefits contained therein. For a full statement of the Standard Terms and the exclusive rights and remedies thereunder, please visit Mini-Circuits' website at www.minicircuits.com/MCLStore/terms.jsp.

Coaxial Connections

INPUT	N-Male
OUTPUT	N-Female

Outline Drawing



Outline Dimensions ($\frac{\text{inch}}{\text{mm}}$)

B	D	E	wt
.67	2.90	.82	grams
17.02	73.66	20.83	90.0