

Coaxial Low Pass Filter

NON-CATALOG

NBLP-467

50Ω Flat Time Delay DC to 280 MHz

Maximum Ratings

Operating Temperature	-55°C to 100°C
Storage Temperature	-55°C to 100°C
RF Power Input	0.5W max.

Features

- flat group delay for low pulse distortion
- rugged shielded case
- other NBLP models available with wide selection of cut-off frequencies

Applications

- linear modulation techniques
- voice transmission applications
- digital communications



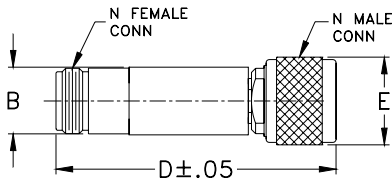
CASE STYLE: FF57

Connectors	Model	Price	Qty.
N-Type	NBLP-467		Contact Sales Dept.

Low Pass Filter Electrical Specifications

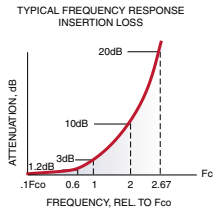
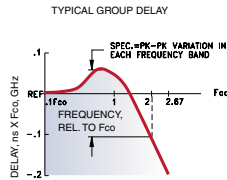
PASSBAND (MHz)	fco, MHz Nom.	STOPBAND (MHz)		VSWR (:1)		GROUP DELAY VARIATION (nsec)		
		(loss > 10 dB)	(loss > 20 dB)	DC-0.2fco	DC-0.6fco	DC-fco	DC-2fco	DC-2.67fco
(loss < 1.2 dB) Min.	(loss 3 dB)			\bar{X}	\bar{X}	\bar{X}	\bar{X}	\bar{X}
DC-280	467	934-1246	1246	1.25:1	2.2:1	0.15	0.4	0.55

Outline Drawing

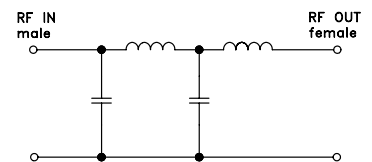


Outline Dimensions (inch/mm)

B	D	E	wt
.67	2.90	.82	grams
17.02	73.66	20.83	90.0

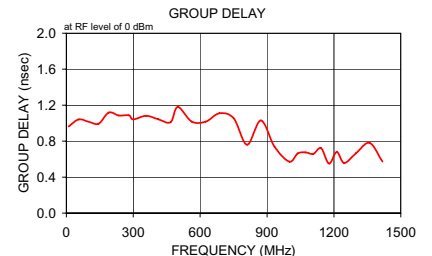
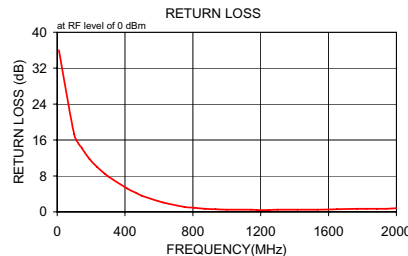
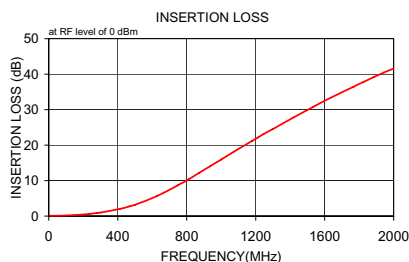


Electrical Schematic



Typical Performance Data

Frequency (MHz)	Insertion Loss (dB)		Return Loss (dB)	Frequency (MHz)	Group Delay (nsec)
	\bar{X}	σ			
10.0	0.07	0.1	36.0	10.0	0.963
100.0	0.18	0.1	17.3	55.0	1.041
145.0	0.28	0.1	14.2	100.0	1.016
190.0	0.42	0.1	11.8	145.0	0.994
235.0	0.61	0.1	10.0	190.0	1.118
280.0	0.85	0.1	8.5	235.0	1.085
300.0	0.98	0.1	7.9	280.0	1.088
412.0	2.01	0.1	5.2	300.0	1.042
467.0	2.72	0.1	4.2	357.5	1.083
500.0	3.19	0.2	3.6	412.0	1.043
625.0	5.57	0.2	2.1	467.0	1.010
750.0	8.71	0.3	1.1	500.0	1.180
810.0	10.34	0.4	0.9	562.5	1.017
872.0	12.19	0.4	0.7	625.0	1.017
934.0	14.02	0.5	0.6	687.5	1.110
1000.0	15.94	0.5	0.5	750.0	1.055
1072.5	18.12	0.6	0.5	810.0	0.762
1142.5	20.11	0.7	0.5	872.5	1.030
1177.5	21.14	0.7	0.4	934.0	0.736
1212.5	22.15	0.7	0.4	1000.0	0.572
1246.0	23.12	0.8	0.4	1037.5	0.663
1300.0	24.56	0.8	0.5	1072.5	0.675
1417.5	27.75	0.9	0.5	1107.5	0.659
1535.0	30.82	1.0	0.5	1142.5	0.722
1650.0	33.70	1.1	0.6	1177.5	0.551
1767.5	36.46	1.2	0.7	1212.5	0.679
1825.0	37.83	1.5	0.7	1246.0	0.558
1885.0	39.23	1.6	0.7	1300.0	0.668
1942.5	40.45	1.6	0.7	1360.0	0.781
2000.0	41.59	1.8	0.8	1417.5	0.573



Mini-Circuits
ISO 9001 ISO 14001 CERTIFIED

ALL NEW
minicircuits.com

P.O. Box 350166, Brooklyn, New York 11235-0003 (718) 934-4500 Fax (718) 332-4661 For detailed performance specs & shopping online see Mini-Circuits web site



The Design Engineers Search Engine Provides ACTUAL Data Instantly From MINI-CIRCUITS At: www.minicircuits.com

RF/IF MICROWAVE COMPONENTS

REV. OR
M97867
NBLP-467
070509