

Coaxial Bandpass Filter

NON-CATALOG

NBP-21.4+
NBP-21.4

50Ω Elliptic Response 19.2 to 23.6 MHz

Maximum Ratings

Operating Temperature	-55°C to 100°C
Storage Temperature	-55°C to 100°C
RF Power Input	0.5W max.

Features

- low insertion loss, 1.5 dB max.
- good selectivity, 1.76 typ. 20 dB/3dB ratio
- rugged shielded case

Applications

- high rejection applications
- image rejection
- IF signal processing



CASE STYLE: FF57

Connectors	Model	Price	Qty.
N-Type	NBP-21.4(+)	Contact Sales Dept.	

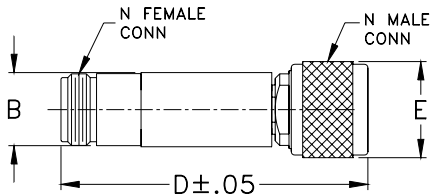
+ RoHS compliant in accordance with EU Directive (2002/95/EC)

The +Suffix identifies RoHS Compliance. See our web site for RoHS Compliance methodologies and qualifications.

Bandpass Filter Electrical Specifications

MODEL NO.	CENTER FREQ. (MHz)	PASSBAND (MHz)	3dB BANDWIDTH (MHz)	STOPBANDS		VSWR (:1)	
		I.L. 1.5 dB Max.	Typ.	(I. loss > 20 dB) at MHz	(I. loss > 35 dB) at MHz	Passband Max.	Stopband Typ.
NBP-21.4	21.4	19.2-23.6	17.9-25.3	15.5 & 29	3.0 & 80-1000	1.7	16

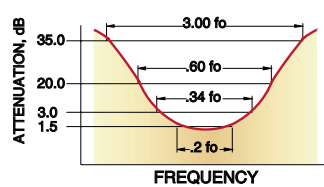
Outline Drawing



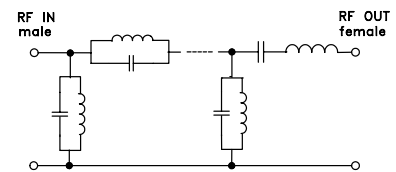
Outline Dimensions (inch/mm)

B	D	E	wt
.67	2.90	.82	grams
17.02	73.66	20.83	90.0

typical frequency response

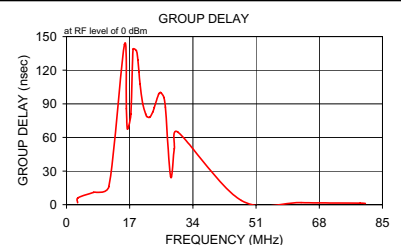
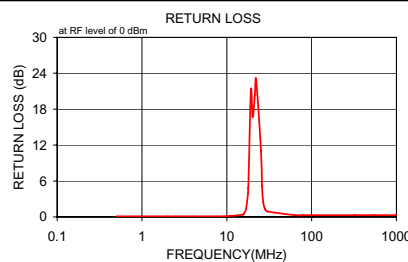
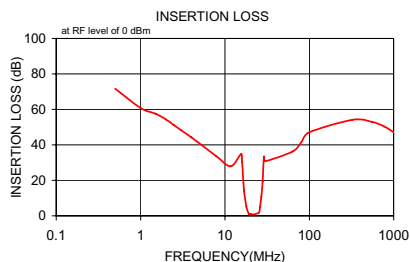


Electrical Schematic



Typical Performance Data

Frequency (MHz)	Insertion Loss (dB)		Return Loss (dB)	Frequency (MHz)	Group Delay (nsec)
	\bar{x}	σ			
0.5	71.63	9.9	0.1	3.0	1.719
1.0	60.77	9.9	0.1	3.1	6.056
1.5	57.59	9.9	0.1	7.3	11.010
2.0	54.26	9.9	0.1	11.4	16.139
2.5	51.03	9.9	0.1	15.6	142.895
3.0	48.32	9.1	0.1	16.1	85.576
4.0	44.25	7.7	0.1	16.4	67.524
7.8	33.81	4.4	0.1	17.3	80.808
11.7	27.91	1.1	0.2	17.9	138.773
15.5	34.76	8.5	0.4	18.8	137.539
16.0	30.17	9.6	0.6	19.2	129.275
16.8	14.18	4.6	1.2	19.5	118.671
17.9	5.30	3.1	4.8	19.8	107.675
19.2	1.05	0.2	21.1	20.5	90.324
20.2	0.95	0.2	16.7	21.3	80.937
21.4	0.86	0.2	20.4	21.6	78.721
22.2	0.85	0.2	22.9	22.4	78.107
25.3	1.90	0.5	11.1	23.2	82.720
26.0	4.97	2.3	5.2	23.6	86.828
27.0	10.74	4.2	2.4	24.8	98.805
28.0	19.34	5.7	1.4	25.3	100.146
29.0	33.39	7.4	1.1	26.2	95.668
30.0	30.79	2.4	0.9	26.6	87.074
63.3	36.27	0.7	0.3	28.0	25.106
80.0	41.42	0.5	0.3	29.0	49.929
100.0	47.07	1.7	0.3	30.0	64.699
325.0	54.13	8.6	0.3	47.0	3.795
550.0	53.01	7.0	0.3	63.1	1.797
775.0	50.30	4.1	0.3	79.0	1.341
1000.0	47.08	3.5	0.3	80.4	1.116



Mini-Circuits®
ISO 9001 ISO 14001 CERTIFIED

ALL NEW
minicircuits.com

P.O. Box 350166, Brooklyn, New York 11235-0003 (718) 934-4500 Fax (718) 332-4661 For detailed performance specs & shopping online see Mini-Circuits web site



The Design Engineers Search Engine Provides ACTUAL Data Instantly From MINI-CIRCUITS At: www.minicircuits.com

RF/IF MICROWAVE COMPONENTS

REV. A
M98898
NBP-21.4
070509