

Coaxial Bandpass Filter

NBP-70+ NBP-70

50Ω Elliptic Response 63 to 77 MHz

Maximum Ratings

Operating Temperature	-55°C to 100°C
Storage Temperature	-55°C to 100°C
RF Power Input	0.5W max.

Permanent damage may occur if any of these limits are exceeded.

Features

- low insertion loss, 1.5 dB max.
- good selectivity, 1.76 typ. 20 dB/3dB ratio
- rugged shielded case

Applications

- high rejection applications
- image rejection
- IF signal processing



CASE STYLE: FF57
Connectors Model
N-Type NBP-70(+)

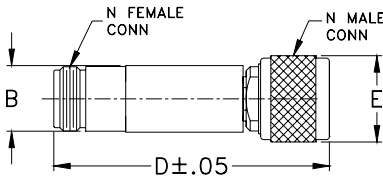
+RoHS Compliant

The +Suffix identifies RoHS Compliance. See our web site for RoHS Compliance methodologies and qualifications

Bandpass Filter Electrical Specifications

MODEL NO.	CENTER FREQ. (MHz)	PASSBAND (MHz) <i>I.L. 1.5 dB Max.</i>	3dB BANDWIDTH (MHz) <i>Typ.</i>	STOPBANDS		VSWR (:1)	
				<i>(l. loss > 20 dB) at MHz</i>	<i>(l. loss > 35 dB) at MHz</i>	<i>Passband Max.</i>	<i>Stopband Typ.</i>
NBP-70(+)	70	63-77	58-82	51 & 94	6.0 & 193-1000	1.7	16

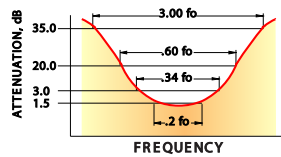
Outline Drawing



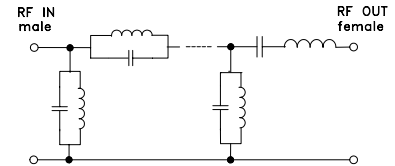
Outline Dimensions (inch/mm)

B	D	E	wt
.67	2.90	.82	grams
17.02	73.66	20.83	90.0

typical frequency response

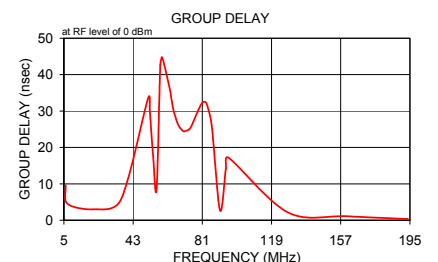
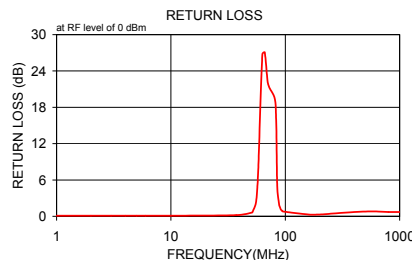
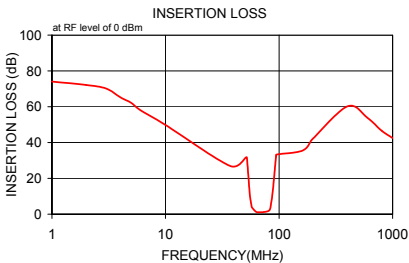


electrical schematic



Typical Performance Data

Frequency (MHz)	Insertion Loss (dB)		Return Loss (dB)	Frequency (MHz)	Group Delay (nsec)
	\bar{x}	σ			
1.0	74.05	9.9	0.1	6.0	9.637
2.0	72.12	9.9	0.1	7.0	4.541
3.0	70.17	9.9	0.1	21.6	3.025
4.0	65.27	9.9	0.1	36.3	5.629
5.0	62.16	9.9	0.1	51.3	33.642
6.0	58.09	9.9	0.1	52.2	29.619
10.0	49.84	8.7	0.1	54.0	17.384
37.3	26.90	2.5	0.2	55.9	8.664
51.0	31.67	1.6	0.6	57.9	42.682
52.0	31.71	6.1	0.8	58.9	44.815
55.3	10.89	2.4	2.2	63.1	36.286
57.0	5.56	1.5	4.8	64.2	32.857
58.0	3.59	1.0	7.7	65.3	30.036
63.0	1.24	0.1	26.8	67.6	26.418
66.2	1.10	0.1	27.1	70.0	24.706
70.0	1.11	0.1	22.3	71.2	24.425
72.7	1.18	0.1	21.2	73.7	24.966
82.0	2.13	0.6	18.8	75.0	25.878
85.0	6.18	2.4	5.1	77.6	28.843
88.0	12.70	3.1	2.1	80.4	31.882
91.0	22.06	4.0	1.2	81.8	32.569
94.0	32.17	1.3	0.9	83.2	32.242
95.0	33.31	2.7	0.8	86.1	26.228
160.3	35.43	0.7	0.3	90.7	2.764
193.0	41.33	1.0	0.3	93.9	14.126
200.0	42.38	1.0	0.3	95.5	17.176
400.0	60.24	9.9	0.7	128.1	2.113
600.0	53.81	8.2	0.8	160.3	1.095
800.0	46.59	4.3	0.7	190.5	0.413
1000.0	42.50	2.9	0.7	193.9	0.375



Notes

- Performance and quality attributes and conditions not expressly stated in this specification document are intended to be excluded and do not form a part of this specification document.
- Electrical specifications and performance data contained in this specification document are based on Mini-Circuit's applicable established test performance criteria and measurement instructions.
- The parts covered by this specification document are subject to Mini-Circuit's standard limited warranty and terms and conditions (collectively, "Standard Terms"); Purchasers of this part are entitled to the rights and benefits contained therein. For a full statement of the Standard Terms and the exclusive rights and remedies thereunder, please visit Mini-Circuit's website at www.minicircuits.com/MCLStore/terms.jsp

