

Non-Catalog Model

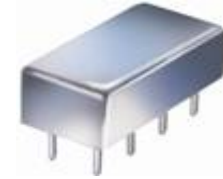
Power Splitter/Combiner

PSC-2-1W-75

2 Way-0°

Important Note

This is a non-catalog model and can be manufactured on specific request. Pricing and delivery information can be supplied upon request.



Please click "Back", and then click "Contact Us" for Applications support.

CASE STYLE : A06

ELECTRICAL SPECIFICATIONS 75Ω @ +25°C					
Parameter		Min.	Typ.	Max.	Units
Frequency		30		600	MHz
Isolation	30 - 300 MHz	22	30		dB
	300 - 600 MHz	20	30		dB
Insertion Loss Above 3.0 dB	30 - 300 MHz		0.40	0.80	dB
	300 - 600 MHz		0.60	1.20	dB
Phase Unbalance	30 - 300 MHz			2.000	deg.
	300 - 600 MHz			4.000	deg.
Amplitude Unbalance	30 - 300 MHz			0.200	dB
	300 - 600 MHz			0.300	dB
VSWR SUM Port	30 - 300 MHz		1.10	1.30	(:1)
	300 - 600 MHz		1.15	1.25	(:1)
VSWR OUTPUTS Port	30 - 300 MHz		1.10	1.30	(:1)
	300 - 600 MHz		1.15	1.25	(:1)

Notes: Matched power rating: 1 Watt.

Internal load dissipation: 0.125 Watt.

Denotes 75 Ohm model, for coax connector models 75 Ohm BNC connectors are standard.

MAXIMUM RATINGS	
Operating Temperature	-55°C to 85°C
Storage Temperature	-55°C to 100°C

PIN CONNECTIONS	
SUM PORT	1
PORT 1	5
PORT 2	6
GND EXT	2, 3, 4, 7, 8
CASE GND	2, 3, 4, 7, 8

Functional Diagram

