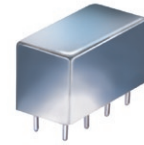


Plug-In

# Power Splitter/Combiner

PSC-2375

2 Way-0° 75Ω 55 to 85 MHz



CASE STYLE: A01  
PRICE: \$28.20 ea. QTY. (1-9)

## Maximum Ratings

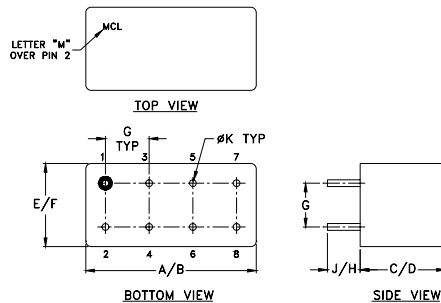
Operating Temperature	-55°C to 100°C
Storage Temperature	-55°C to 100°C
Power Input (as a splitter)	1W max.
Internal Dissipation	0.125W max.

Permanent damage may occur if any of these limits are exceeded.

## Pin Connections

SUM PORT	1
PORT 1	5
PORT 2	6
GROUND	2,3,4,7,8
CASE GROUND	2,3,4,7,8

## Outline Drawing



## Outline Dimensions (inch/mm)

A	B	C	D	E	F	
.770	.800	.385	.400	.370	.400	
19.56	20.32	9.78	10.16	9.40	10.16	
G	H	J	K			wt
.200	.20	.14	.031			grams
5.08	5.08	3.56	0.79			5.2

## Features

- low insertion loss, 0.3 dB typ.
- excellent isolation, 35 dB typ.
- rugged welded construction

## Applications

- amateur radio
- defense & federal communication
- VHF

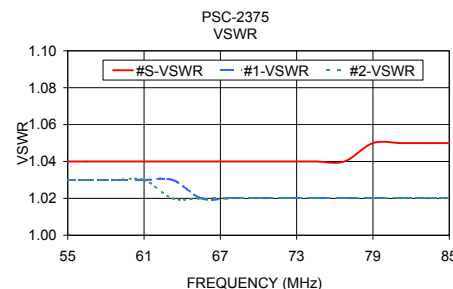
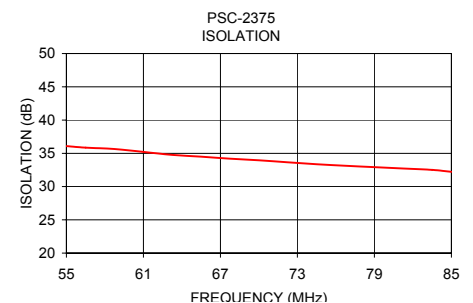
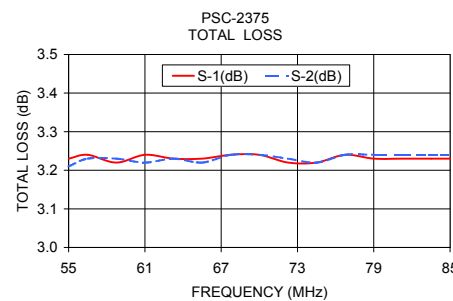
## Electrical Specifications

FREQ. RANGE (MHz)	ISOLATION (dB)		INSERTION LOSS (dB) ABOVE 3.0 dB		PHASE UNBALANCE (Degrees)	AMPLITUDE UNBALANCE (dB)
	Typ.	Min	Typ.	Max.	Max.	Max.
$f_c - f_u$						
55-85	35	25	0.3	0.5	1.0	0.1

## Typical Performance Data

Frequency (MHz)	Total Loss <sup>1</sup> (dB)		Amplitude Unbalance (dB)	Isolation (dB)	Phase Unbalance (deg.)	VSWR S	VSWR 1	VSWR 2
	S-1	S-2						
55.00	3.23	3.21	0.02	36.08	0.15	1.04	1.03	1.03
56.50	3.24	3.23	0.01	35.85	0.04	1.04	1.03	1.03
58.75	3.22	3.23	0.01	35.65	0.17	1.04	1.03	1.03
61.00	3.24	3.22	0.01	35.21	0.02	1.04	1.03	1.03
63.25	3.23	3.23	0.00	34.76	0.07	1.04	1.03	1.02
65.50	3.23	3.22	0.01	34.50	0.01	1.04	1.02	1.02
67.75	3.24	3.24	0.00	34.19	0.07	1.04	1.02	1.02
70.00	3.24	3.24	0.00	33.95	0.02	1.04	1.02	1.02
72.25	3.22	3.23	0.01	33.65	0.05	1.04	1.02	1.02
74.50	3.22	3.22	0.00	33.36	0.02	1.04	1.02	1.02
76.75	3.24	3.24	0.00	33.13	0.07	1.04	1.02	1.02
79.00	3.23	3.24	0.00	32.92	0.11	1.05	1.02	1.02
81.25	3.23	3.24	0.01	32.72	0.05	1.05	1.02	1.02
83.50	3.23	3.24	0.02	32.51	0.10	1.05	1.02	1.02
85.00	3.23	3.24	0.01	32.22	0.03	1.05	1.02	1.02

1. Total Loss = Insertion Loss + 3dB splitter loss.



## electrical schematic



**Mini-Circuits®**  
ISO 9001 ISO 14001 AS 9100 CERTIFIED  
The Design Engineers Search Engine Provides ACTUAL Data Instantly at [minicircuits.com](http://minicircuits.com)  
IFIRF MICROWAVE COMPONENTS

For detailed performance specs & shopping online see web site

P.O. Box 350166, Brooklyn, New York 11235-0003 (718) 934-4500 Fax (718) 332-4661

Notes: 1. Performance and quality attributes and conditions not expressly stated in this specification sheet are intended to be excluded and do not form a part of this specification sheet. 2. Electrical specifications and performance data contained herein are based on Mini-Circuit's applicable established test performance criteria and measurement instructions. 3. The parts covered by this specification sheet are subject to Mini-Circuits standard limited warranty and terms and conditions (collectively, "Standard Terms"); Purchasers of this part are entitled to the rights and benefits contained therein. For a full statement of the Standard Terms and the exclusive rights and remedies thereunder, please visit Mini-Circuits' website at [www.minicircuits.com/MCLStore/terms.jsp](http://www.minicircuits.com/MCLStore/terms.jsp).

REV. A  
M127604  
PSC-2375  
HY/TD/CP/AM  
100602