

Non-Catalog Model

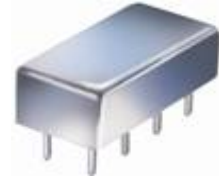
Power Splitter/Combiner

PSC-4-1W-75

4 Way-0°

Important Note

This is a non-catalog model and can be manufactured on specific request. Pricing and delivery information can be supplied upon request.



Please click "Back", and then click "Contact Us" for Applications support.

CASE STYLE : A05

ELECTRICAL SPECIFICATIONS 75Ω @ +25°C					
Parameter		Min.	Typ.	Max.	Units
Frequency		5		650	MHz
Isolation	5 - 50 MHz	22	38		dB
	50 - 325 MHz	22	40		dB
	325 - 650 MHz	18	25		dB
Insertion Loss Above 6.0 dB	5 - 50 MHz		0.60	0.90	dB
	50 - 325 MHz		0.65	1.20	dB
	325 - 650 MHz		0.90	1.50	dB
Phase Unbalance	5 - 50 MHz			1.000	deg.
	50 - 325 MHz			3.000	deg.
	325 - 650 MHz			5.000	deg.
Amplitude Unbalance	5 - 50 MHz			0.200	dB
	50 - 325 MHz			0.300	dB
	325 - 650 MHz			0.600	dB
VSWR	SUM Port		1.11		(:1)
	OUT Ports		1.17		(:1)

Notes: Matched power rating: 1 Watt.

Internal load dissipation: 0.25 Watt.

Denotes 75 Ohm model, for coax connector models 75 Ohm BNC connectors are standard.

MAXIMUM RATINGS	
Operating Temperature	-55°C to 85°C
Storage Temperature	-55°C to 100°C

PIN CONNECTIONS	
SUM PORT	4
PORT 1	7
PORT 2	8
PORT 3	1
PORT 4	2
GND EXT	3, 5, 6

Functional Diagram

