

## Non-Catalog Model

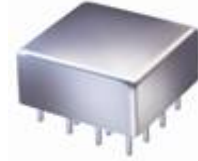
# Power Splitter/Combiner

# PSC-4A-475

## 4 Way-0°

### Important Note

This is a non-catalog model and can be manufactured on specific request.  
Pricing and delivery information can be supplied upon request.



Please click "Back", and then click "Contact Us" for Applications support.

**CASE STYLE : C07**

ELECTRICAL SPECIFICATIONS 75Ω @ +25°C					
Parameter		Min.	Typ.	Max.	Units
<b>Frequency</b>		10		800	MHz
<b>Isolation</b>	10 - 100 MHz	20	30		dB
	100 - 400 MHz	20	33		dB
	400 - 800 MHz	18	25		dB
<b>Insertion Loss Above 6.0 dB</b>	10 - 100 MHz		0.40	0.70	dB
	100 - 400 MHz		0.60	0.90	dB
	400 - 800 MHz		1.20	1.60	dB
<b>Phase Unbalance</b>	10 - 100 MHz		0.204		deg.
	100 - 400 MHz		0.855		deg.
	400 - 800 MHz		2.709		deg.
<b>Amplitude Unbalance</b>	10 - 100 MHz		0.016	0.200	dB
	100 - 400 MHz		0.084	0.400	dB
	400 - 800 MHz		0.298	0.800	dB
<b>VSWR</b>	SUM Port		1.27		(:1)
	OUT Ports		1.16		(:1)

**Notes:** Matched power rating: 1 Watt.

Internal load dissipation: 0.25 Watt.

Denotes 75 Ohm model, for coax connector models 75 Ohm BNC connectors are standard.

MAXIMUM RATINGS	
<b>Operating Temperature</b>	-55°C to 85°C
<b>Storage Temperature</b>	-55°C to 100°C

PIN CONNECTIONS	
<b>SUM PORT</b>	2
<b>PORT 1</b>	8
<b>PORT 2</b>	12
<b>PORT 3</b>	5
<b>PORT 4</b>	9
<b>GND EXT</b>	all other pins

### Functional Diagram

