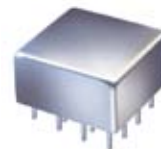


# Non-Catalog Model

## Modulator

Plug-In

### QMC-100



CASE STYLE: C07

#### Important Note

This is a non-catalog model and can be manufactured on specific request. Pricing and delivery information can be supplied upon request.

Please click "Back", and then click "Contact Us" for Applications support.

#### ELECTRICAL SPECIFICATIONS 50Ω @ +25°C

Parameter	Min.	Typ.	Max.	Units
Frequency	50		100	MHz
Insertion Loss		5.6	7.5	dB
Amplitude Unbalance		0.2	0.8	dB
Phase Unbalance		±3	±6	Degrees
1dB Compression		4		dBm
VSWR (IN)		1.5:1		(:1)
VSWR (OUT)		1.9:1		(:1)

#### MAXIMUM RATINGS

Operating Temperature	-55°C to 100°C
Storage Temperature	-55°C to 100°C
Input power	100mW
Control current	40mA

#### PIN CONNECTIONS

RF IN	13
RF OUT	1
Control-1	5
Control-2	8
Isolate (do not use)	2
GND EXT	3,4,6,7,9,10,11,12,14,15,16
Case GND	3,4,6,7,10,11,14,15

 **Mini-Circuits**<sup>®</sup>  
ISO 9001 ISO 14001 CERTIFIED

ALL NEW  
 minicircuits.com

P.O. Box 350166, Brooklyn, New York 11235-0003 (718) 934-4500 Fax (718) 332-4661 For detailed performance specs & shopping online see Mini-Circuits web site



The Design Engineers Search Engine Provides ACTUAL Data Instantly From MINI-CIRCUITS At: [www.minicircuits.com](http://www.minicircuits.com)

RF/IF MICROWAVE COMPONENTS

REV. OR  
M119294  
QMC-100  
080829