

# Engineering Development Model

## High Pass Filter

## RHP-EDU2190

### Surface Mount

#### Important Note

This model has been designed, built and tested in our engineering department. Performance data represents model capability. At present it is a non-catalog model. On request, we can supply a final specification sheet, part number and price/delivery information.



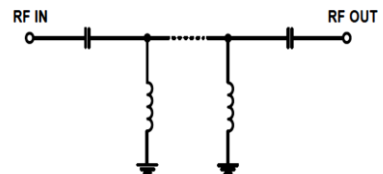
Please click "Back", and then click "Contact Us" for Applications support.

**CASE STYLE : GP1212**

ELECTRICAL SPECIFICATIONS 50Ω @ +25°C				
Parameter	Min.	Typ.	Max.	Units
Passband (Loss < 1.5 dB)	1000		1800	MHz
Insertion loss 3 dB		850		MHz
Stopband (Loss > 40 dB)	DC	380		MHz
	380	710		MHz
Passband VSWR		1.45		(:1)
Stopband VSWR		20		(:1)

#### Functional Schematic

MAXIMUM RATINGS	
Operating Temperature	-40°C to 85°C
Storage Temperature	-55°C to 100°C
RF Power Input	1.9 W



PIN CONNECTIONS	
Input	2
Output	6
Ground	1,3,4,5,7,8



P.O. Box 350166, Brooklyn, New York 11235-0003 (718) 934-4500 • Fax (718) 332-4661 For detailed performance specs & shopping online see Mini-Circuits web site  
 The Design Engineers Search Engine Provides ACTUAL Data Instantly From MINI-CIRCUITS At: [www.minicircuits.com](http://www.minicircuits.com)

IF/RF MICROWAVE COMPONENTS

REV. X1  
 RHP-EDU2190  
 URJ  
 151217  
 Page 1 of 1