

Engineering Development Model

Low Pass Filter

RLPF-EDU0903

Surface Mount

Important Note

This model has been designed, built and tested in our engineering department. Performance data represents model capability. At present it is a non-catalog model. On request, we can supply a final specification sheet, part number and price/delivery information.



Please click "Back", and then click "Contact Us" for Applications support.

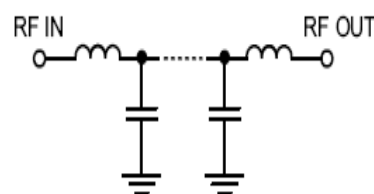
CASE STYLE : CK605

ELECTRICAL SPECIFICATIONS 50Ω @ +25°C

Parameter	Min.	Typ.	Max.	Units
Passband (Loss < 2 dB)	DC		1500	MHz
Insertion loss 3dB		1620		MHz
Stopband (Loss > 20 dB)	@1850			MHz
(Loss > 25 dB)	1900		3200	MHz
Passband VSWR		1.2	1.5	(:1)
Stopband VSWR		20		(:1)

Functional Schematic

MAXIMUM RATINGS	
Operating Temperature	-40°C to 85°C
Storage Temperature	-55°C to 100°C
RF Power Input	0.5 W



PIN CONNECTIONS

Input	2
Output	10
Not Connected	14
Case Ground	1,3,4,5,6,7,8,9,11,12,13,15,16