

Engineering Development Model

Low Pass Filter

RLPF-EDU0983

Surface Mount

Important Note

This model has been designed, built and tested in our engineering department. Performance data represents model capability. At present it is a non-catalog model. On request, we can supply a final specification sheet, part number and price/delivery information.



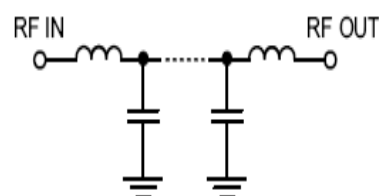
Please click "Back", and then click "Contact Us" for Applications support.

CASE STYLE : CK605

ELECTRICAL SPECIFICATIONS 50Ω @ +25°C

Parameter	Min.	Typ.	Max.	Units
Passband (Loss < 2 dB)	DC		2500	MHz
Insertion loss 3dB		3060		MHz
Stopband (Loss > 20 dB) (Loss > 30 dB)	3330		3800	MHz
	3800		6000	MHz
Passband VSWR		1.5	1.9	(:1)
Stopband VSWR		20		(:1)

Functional Schematic



MAXIMUM RATINGS

Operating Temperature	-40°C to 85°C
Storage Temperature	-55°C to 100°C
RF Power Input	0.5 W

PIN CONNECTIONS

Input	2
Output	10
Not Connected	14
Case Ground	1,3,4,5,6,7,8,9,11,12,13,15,16