

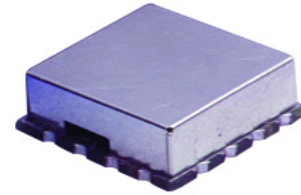
Engineering Development Model

Voltage Controlled Oscillator

ROS-EDR-9668/3RE+

Important Note

This model has been designed, built and tested in our engineering department. Performance data represents model capability. At present it is a non-catalog model. On request, we can supply a final specification sheet, part number and price/delivery information.



Please click "Back", and then click "Contact Us" for Applications support.

CASE STYLE : CK605

ELECTRICAL SPECIFICATIONS 50Ω				
Parameter	Min.	Typ.	Max.	Units
Frequency	1800		1803	MHz
Tuning Voltage		0.5-5		V
Power Output		+3		dBm
Phase Noise				
at 1 kHz offset		-92		dBc/Hz
at 10 KHz offset		-119		dBc/Hz
at 100 KHz offset		-141		dBc/Hz
at 1000 kHz offset		-160		dBc/Hz
Pulling at 12 dB _r PK-PK all phases		0.2		MHz
Pushing at V _{cc} ± 5%		0.1		MHz/V
Tuning Sensitivity		7 - 7		MHz/V
Harmonic Suppression		-18		dBc
3 dB Modulation Bandwidth				kHz
Supply Voltage		5		V
Supply Current			32	mA

MAXIMUM RATINGS	
Operating Temperature	-45°C to 85°C
Storage Temperature	-55°C to 105°C
Absolute Supply Voltage (V _{cc})	+6V
Absolute Tuning Voltage (V _{tune})	+6V

PIN CONNECTIONS	
RF OUT	10
VCC	14
V-TUNE	2
GROUND	1,3,4,5,6,7,8,9,11,12,13,15,16