

# Engineering Development Model

## High Pass Filter

## SHP-EDU1578

### Coaxial

#### Important Note

This model has been designed, built and tested in our engineering department. Performance data represents model capability. At present it is a non-catalog model. On request, we can supply a final specification sheet, part number and price/delivery information.



Please click "Back", and then click "Contact Us" for Applications support.

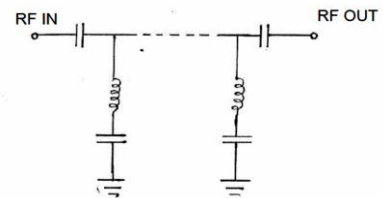
CASE STYLE : FF99

#### ELECTRICAL SPECIFICATIONS 50Ω @ +25°C

Parameter	Min.	Typ.	Max.	Units
Passband (Loss < 1 dB)	110		3000	MHz
Insertion loss 3 dB		100		MHz
Stopband (Loss > 40 dB)	DC	77		MHz
	(Loss > 20 dB)	77	84	MHz
Passband VSWR		1.8		(:1)
Stopband VSWR		20		(:1)

#### Functional Schematic

MAXIMUM RATINGS	
Operating Temperature	-40°C to 85°C
Storage Temperature	-55°C to 100°C
RF Power Input	1 W



#### PIN CONNECTIONS

Input	SMA Male
Output	SMA Female



P.O. Box 350166, Brooklyn, New York 11235-0003 (718) 934-4500 • Fax (718) 332-4661 For detailed performance specs & shopping online see Mini-Circuits web site  
The Design Engineers Search Engine Provides ACTUAL Data Instantly From MINI-CIRCUITS At: [www.minicircuits.com](http://www.minicircuits.com)



IF/RF MICROWAVE COMPONENTS

REV. X1  
SHP-EDU1578  
URJ  
151212  
Page 1 of 1