

## Non-Catalog Model

# Frequency Mixer

# SRA-173SH

Level 17 (LO Power +17 dBm)

### Important Note

This is a non-catalog model and can be manufactured on specific request. Pricing and delivery information can be supplied upon request.

Please click "Back", and then click "Contact Us" for Applications support.



**CASE STYLE : A06**

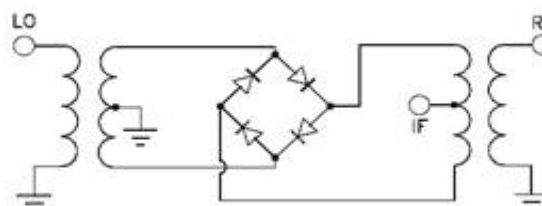
| ELECTRICAL SPECIFICATIONS 50Ω @ +25°C |               |       |      |      |       |
|---------------------------------------|---------------|-------|------|------|-------|
| Parameter                             |               | Min.  | Typ. | Max. | Units |
| Frequency                             | LO (fL to fU) | 5     |      | 1200 | MHz   |
|                                       | RF (fL to fU) | 5     |      | 1200 | MHz   |
|                                       | IF            | 1     |      | 1200 | MHz   |
| Conversion Loss                       | mid band      |       | 5.7  | 7.0  | dB    |
|                                       | Total Range   |       |      | 8.5  | dB    |
| LO-RF Isolation                       | Low Range     | 35    | 40   |      | dB    |
|                                       | Mid Range     | 25    | 35   |      | dB    |
|                                       | Upper Range   | 20    | 35   |      | dB    |
| LO-IF Isolation                       | Low Range     | 35    | 40   |      | dB    |
|                                       | Mid Range     | 20    | 35   |      | dB    |
|                                       | Upper Range   | 20    | 30   |      | dB    |
| IP3 Input                             |               | +27.5 | +30  |      | dBm   |
| 1 dB Comp. Input Power                |               |       | +14  |      | dBm   |

Notes: Low Range = [fL to 10fL]      Mid Range = [10fL to fU/2]      Upper Range = [fU/2 to fU]  
 mid band = [2fL to fU/2]

IP3 : RF Power = 0 dBm @ 200 MHz & 202 MHz , LO Power = +17 dBm @ 180 MHz  
 Hermetically sealed

| MAXIMUM RATINGS       |                |
|-----------------------|----------------|
| Operating Temperature | -55°C to 100°C |
| Storage Temperature   | -55°C to 100°C |
| RF Power              | 200mW          |
| IF Current            | 40mA           |

### Electrical Schematics



| PIN CONNECTIONS |            |
|-----------------|------------|
| LO              | 8          |
| RF              | 1          |
| IF              | 3, 4 ^     |
| GROUND          | 2, 5, 6, 7 |

^ - pins must be connected together externally