

Low Pass Filter

SXLP-EDU1701

Surface Mount

Important Note

This model has been designed, built and tested in our engineering department. Performance data represents model capability. At present it is a non-catalog model. On request, we can supply a final specification sheet, part number and price/delivery information.



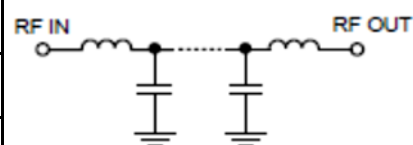
Please click "Back", and then click "Contact Us" for Applications support.

CASE STYLE : HF1139

| ELECTRICAL SPECIFICATIONS 50Ω @ +25°C | | | | |
|---------------------------------------|----------------|------|------|-------|
| Parameter | Min. | Typ. | Max. | Units |
| Passband (Loss < 2 dB) | DC | | 2.5 | MHz |
| Insertion loss 3 dB | | 2.9 | | MHz |
| Stopband (Loss > 20 dB) | | 4.2 | 200 | MHz |
| | (Loss > 40 dB) | | 200 | MHz |
| Passband VSWR | | 1.5 | | (:1) |
| Stopband VSWR | | 20 | | (:1) |

Functional Schematic

| MAXIMUM RATINGS | |
|-----------------------|----------------|
| Operating Temperature | -40°C to 85°C |
| Storage Temperature | -55°C to 100°C |
| RF Power Input | 200mW |



| PIN CONNECTIONS | |
|-----------------|-------------|
| Input | 1 |
| Output | 8 |
| Ground | 2,3,4,5,6,7 |