

Non-Catalog Model

Frequency Mixer

SYM-10HJ

Level 17 (LO Power +17 dBm)

Important Note

This is a non-catalog model and can be manufactured on specific request. Pricing and delivery information can be supplied upon request.



Please click "Back", and then click "Contact Us" for Applications support.

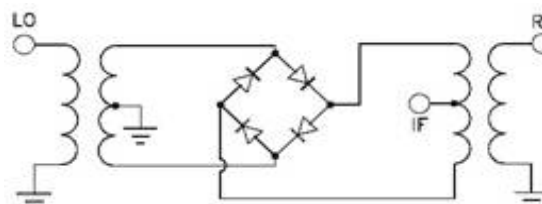
CASE STYLE : CG581

ELECTRICAL SPECIFICATIONS 50Ω @ +25°C					
Parameter		Min.	Typ.	Max.	Units
Frequency	LO (fL to fU)	400		1000	MHz
	RF (fL to fU)	400		1000	MHz
	IF	0		400	MHz
Conversion Loss			6.6	8.0	dB
LO-RF Isolation		33	46		dB
LO-IF Isolation		18	32		dB
IP3 Input			+25		dBm
1 dB Comp. Input Power			+10		dBm

Note : units are non-hermetic and aqueous washable

MAXIMUM RATINGS	
Operating Temperature	-40°C to 85°C
Storage Temperature	-55°C to 100°C
RF Power	200mW
IF Current	40mA

Electrical Schematics



PIN CONNECTIONS	
LO	11
RF	5
IF	2
GROUND	1, 3, 4, 6, 7, 8, 9, 10, 12