

High IP3

# Frequency Mixer

NON-CATALOG

SYM-30DHW

Level 17 (LO Power +17 dBm) 5 to 3000 MHz



CASE STYLE: TTT167

**+RoHS Compliant**  
The +Suffix identifies RoHS Compliance. See our web site for RoHS Compliance methodologies and qualifications

Available Tape and Reel at no extra cost

Reel Size	Devices/Reel
7"	10, 20, 50, 100, 200
13"	500

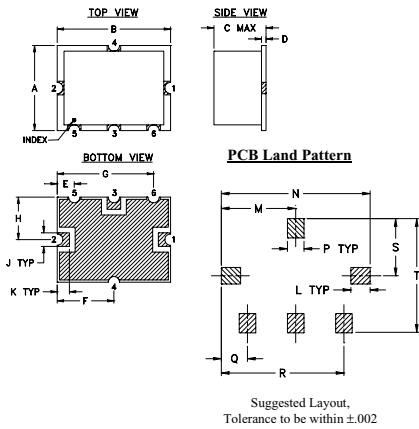
## Maximum Ratings

Operating Temperature	-40°C to 85°C
Storage Temperature	-55°C to 100°C
RF Power	200mW
IF Current	40mA
Permanent damage may occur if any of these limits are exceeded.	

## Pin Connections

LO	2
RF	1
IF	3
GROUND	4,5,6

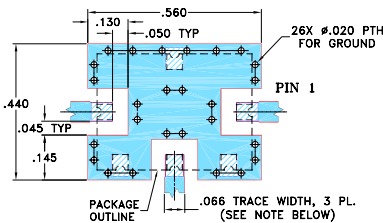
## Outline Drawing



## Outline Dimensions (inch/mm)

A	B	C	D	E	F	G	H	J	K
.38	.50	.23	.020	.075	.250	.425	.187	.050	.050
9.65	12.70	5.84	0.51	1.91	6.35	10.80	4.75	1.27	1.27
L	M	N	P	Q	R	S	T	wt.	
.070	.270	.540	.060	.095	.445	.208	.415		
1.78	6.86	13.72	1.52	2.41	11.30	5.28	10.54		0.8

## Demo Board MCL P/N: TB-12 Suggested PCB Layout (PL-079)



### NOTE:

- TRACE WIDTH IS SHOWN FOR ROGERS RO4350B WITH DIELECTRIC THICKNESS .030" ± .002". COPPER: 1/2 OZ EACH SIDE. FOR OTHER MATERIALS TRACE WIDTH MAY NEED TO BE MODIFIED.
  - THE USE OF SOLDER MASK OVER THE GROUND AREA UNDER THE UNIT AS SHOWN IS RECOMMENDED TO PREVENT POTENTIAL SHORTING. IF USER CHOOSES TO EXPOSE METAL UNDER THE ENTIRE UNIT GROUND PAD FOR IMPROVED GROUNDING, IT IS RECOMMENDED A SOLDER MASK DAM BE APPLIED AROUND EACH GROUND PAD TO ENSURE FILLET AND CONNECTION AT GROUND PADS.
  - BOTTOM SIDE OF THE PCB IS CONTINUOUS GROUND PLANE.
- 

### Notes

- Performance and quality attributes and conditions not expressly stated in this specification document are intended to be excluded and do not form a part of this specification document.
- Electrical specifications and performance data contained in this specification document are based on Mini-Circuit's applicable established test performance criteria and measurement instructions.
- The parts covered by this specification document are subject to Mini-Circuits standard limited warranty and terms and conditions (collectively, "Standard Terms"); Purchasers of this part are entitled to the rights and benefits contained therein. For a full statement of the Standard Terms and the exclusive rights and remedies thereunder, please visit Mini-Circuits' website at [www.minicircuits.com/MCLStore/terms.jsp](http://www.minicircuits.com/MCLStore/terms.jsp)

## Features

- wideband, 5 to 3000 MHz
- good L-R isolation, 40 dB typ.
- excellent L-I isolation, 44 dB typ.
- wide IF bandwidth, useable to 3 GHz
- high IP3, 26 dBm typ.

## Applications

- CDMA
- GSM
- DCS
- PCN

## Electrical Specifications

FREQUENCY (MHz)	CONVERSION LOSS* (dB)		LO-RF ISOLATION (dB)			LO-IF ISOLATION (dB)			IP3* at center band (dBm)									
	LO/RF	IF	L	M	U	L	M	U										
5-3000	5-1500	6.5	.10	8.3	9.1	36	24	40	30	40	25	42	28	44	36	48	33	29

1 dB COMP: +14 dBm typ.

\*IP3 at 800-900 MHz, and 1800-1900 MHz

L = low range [ $f_1$  to  $10 f_1$ ]

m = mid band [ $2 f_1$  to  $f_1/2$ ]

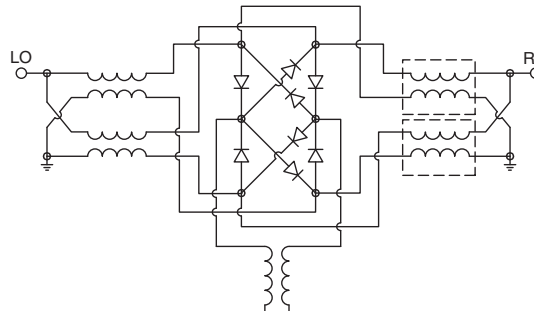
M = mid range [ $10 f_1$  to  $f_1/2$ ]

U = upper range [ $f_1/2$  to  $f_1$ ]

## Typical Performance Data

Frequency (MHz)		Conversion Loss (dB)	Isolation L-R (dB)	Isolation L-I (dB)	VSWR RF Port (:1)	VSWR LO Port (:1)
RF	LO	LO +17dBm	LO +17dBm	LO +17dBm	LO +17dBm	LO +17dBm
5.10	35.11	6.52	35.53	39.27	1.16	1.65
10.10	40.11	6.37	36.08	42.21	1.09	1.64
50.10	80.11	6.32	35.81	44.46	1.04	1.65
150.10	180.11	6.35	36.19	44.52	1.07	1.65
292.21	322.22	6.54	36.11	44.86	1.14	1.59
434.31	464.32	6.48	36.06	44.17	1.21	1.60
576.42	606.43	6.51	36.15	43.45	1.31	1.61
718.52	748.53	6.35	36.82	43.17	1.40	1.56
860.63	890.64	6.48	37.89	43.23	1.51	1.56
1002.73	1032.74	6.61	38.92	43.28	1.58	1.57
1144.84	1174.85	6.51	40.92	43.96	1.67	1.51
1286.94	1316.95	6.34	42.38	45.03	1.62	1.52
1429.05	1459.06	6.15	42.75	45.18	1.56	1.45
1600.10	1630.11	6.10	42.06	45.85	1.37	1.42
1815.49	1845.50	6.32	40.35	45.85	1.20	1.36
2030.87	2060.88	6.91	37.09	44.23	1.34	1.31
2246.25	2276.26	7.53	34.69	43.76	1.52	1.22
2461.64	2491.65	7.53	34.48	46.04	1.44	1.12
2677.02	2707.03	7.31	36.24	45.72	1.29	1.09
3000.10	3030.11	7.24	39.16	41.54	1.37	1.27

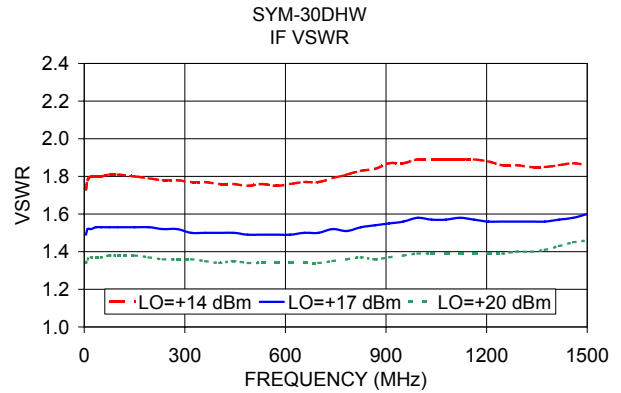
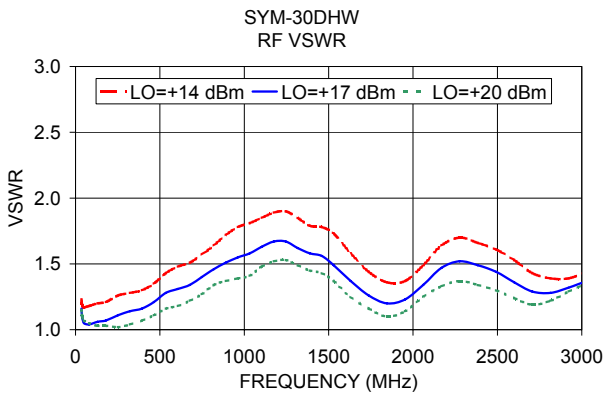
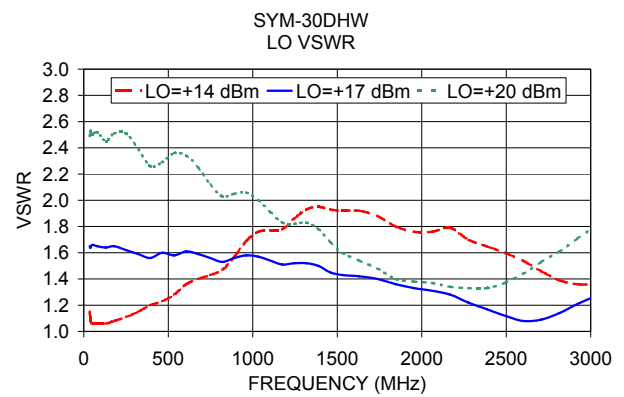
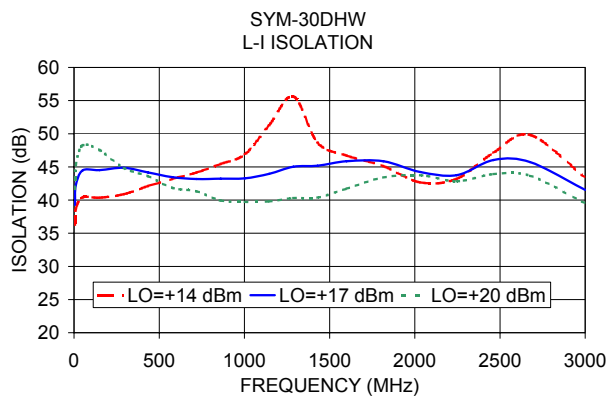
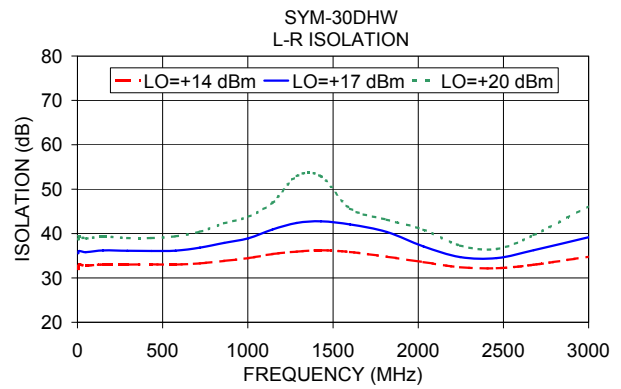
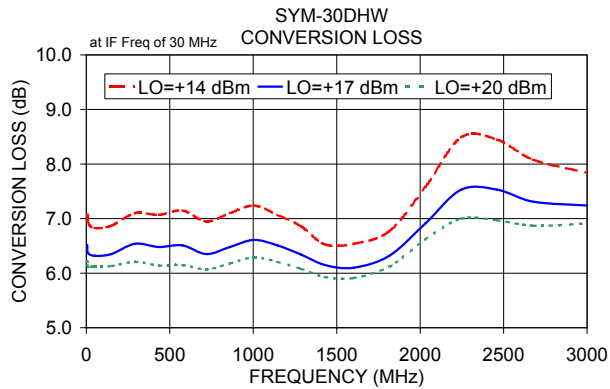
## Electrical Schematic



Mini-Circuits®

www.minicircuits.com P.O. Box 350166, Brooklyn, NY 11235-0003 (718) 934-4500 sales@minicircuits.com

REV. E  
M151777  
SYM-30DHW  
DJ/TD/CP/AM  
160720  
Page 1 of 2



### Notes

- A. Performance and quality attributes and conditions not expressly stated in this specification document are intended to be excluded and do not form a part of this specification document.
- B. Electrical specifications and performance data contained in this specification document are based on Mini-Circuit's applicable established test performance criteria and measurement instructions.
- C. The parts covered by this specification document are subject to Mini-Circuits standard limited warranty and terms and conditions (collectively, "Standard Terms"); Purchasers of this part are entitled to the rights and benefits contained therein. For a full statement of the Standard Terms and the exclusive rights and remedies thereunder, please visit Mini-Circuits' website at [www.minicircuits.com/MCLStore/terms.jsp](http://www.minicircuits.com/MCLStore/terms.jsp)