

# Coaxial Power Splitter/Combiner

## ZB4PD1-2000+ ZB4PD1-2000

4 Way-0° 50Ω 800 to 2000 MHz



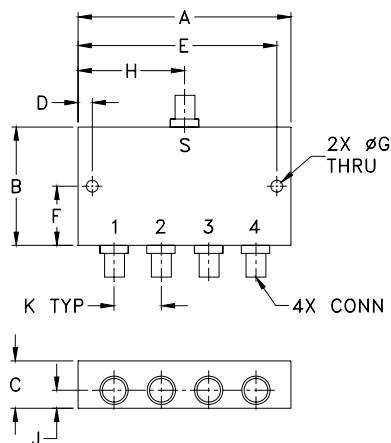
### Maximum Ratings

|                             |                |
|-----------------------------|----------------|
| Operating Temperature       | -55°C to 100°C |
| Storage Temperature         | -55°C to 100°C |
| Power Input (as a splitter) | 10W max.       |
| Internal Dissipation        | 0.375W max.    |

### Coaxial Connections

|          |   |
|----------|---|
| SUM PORT | S |
| PORT 1   | 1 |
| PORT 2   | 2 |
| PORT 3   | 3 |
| PORT 4   | 4 |

### Outline Drawing



### Outline Dimensions (inch/mm)

|       |       |       |       |       |       |
|-------|-------|-------|-------|-------|-------|
| A     | B     | C     | D     | E     | F     |
| 3.50  | 2.13  | .88   | .150  | 3.350 | 1.06  |
| 88.90 | 54.10 | 22.35 | 3.81  | 85.09 | 26.92 |
| G     | H     | J     | K     | wt    |       |
| .125  | 1.75  | .44   | .89   | grams |       |
| 3.18  | 44.45 | 11.18 | 22.61 | 260   |       |

### Features

- wideband, 800 to 2000 MHz
- good isolation, 25 dB typ.
- excellent output VSWR, 1.1:1 typ.
- up to 10W power input as splitters

### Applications

- cellular
- satellite distribution
- GPS

SMA version shown  
CASE STYLE: UU188

| Connectors | Model            | Price   | Qty.  |
|------------|------------------|---------|-------|
| BNC        | ZB4PD1-2000(+)   | \$94.95 | (1-9) |
| SMA        | ZB4PD1-2000-S(+) | \$94.95 | (1-9) |
| N-TYPE     | ZB4PD1-2000-N+   | \$94.95 | (1-9) |

+ RoHS compliant in accordance with EU Directive (2002/95/EC)

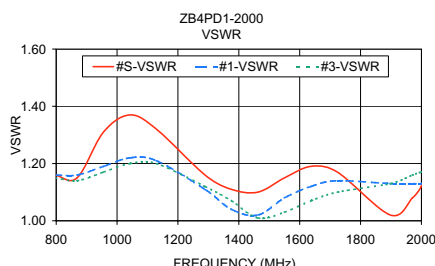
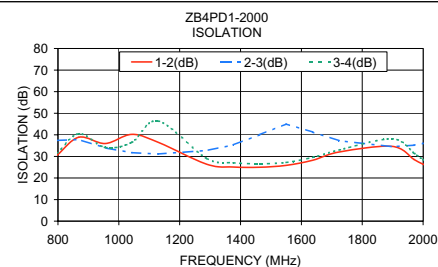
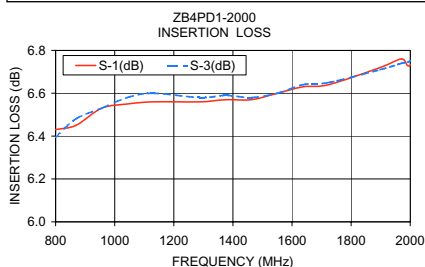
The +Suffix identifies RoHS Compliance. See our web site for RoHS Compliance methodologies and qualifications.

### Electrical Specifications

| FREQ. RANGE (MHz) | ISOLATION (dB) |      | INSERTION LOSS (dB) ABOVE 6.0 dB |      | AMPLITUDE UNBALANCE (dB) | VSWR (:1) |      |      |      |
|-------------------|----------------|------|----------------------------------|------|--------------------------|-----------|------|------|------|
|                   | Typ.           | Min. | Typ.                             | Max. |                          | S         |      | OUT  |      |
| $f_L$ - $f_U$     |                |      |                                  |      | Max.                     | Typ.      | Max. | Typ. | Max. |
| 800-2000          | 25             | 18   | 0.6                              | 1.2  | 0.3                      | 1.20      | 1.60 | 1.15 | 1.55 |

### Typical Performance Data

| Freq. (MHz) | Insertion Loss (dB) |      |      |      | Amp. Unbal. (dB) | Isolation (dB) |       |       | VSWR S | VSWR 1 | VSWR 2 | VSWR 3 | VSWR 4 |
|-------------|---------------------|------|------|------|------------------|----------------|-------|-------|--------|--------|--------|--------|--------|
|             | S-1                 | S-2  | S-3  | S-4  |                  | 1-2            | 2-3   | 3-4   |        |        |        |        |        |
| 796.00      | 6.43                | 6.36 | 6.39 | 6.49 | 0.13             | 30.41          | 37.43 | 31.33 | 1.16   | 1.16   | 1.15   | 1.15   | 1.13   |
| 868.50      | 6.45                | 6.46 | 6.48 | 6.47 | 0.02             | 38.89          | 37.81 | 40.48 | 1.15   | 1.16   | 1.15   | 1.14   | 1.13   |
| 955.50      | 6.53                | 6.52 | 6.53 | 6.52 | 0.01             | 35.98          | 33.94 | 34.14 | 1.31   | 1.19   | 1.18   | 1.17   | 1.16   |
| 1042.50     | 6.55                | 6.56 | 6.58 | 6.59 | 0.04             | 40.22          | 31.76 | 36.51 | 1.37   | 1.22   | 1.21   | 1.20   | 1.18   |
| 1129.50     | 6.56                | 6.57 | 6.60 | 6.57 | 0.03             | 36.52          | 31.12 | 46.39 | 1.32   | 1.21   | 1.21   | 1.20   | 1.18   |
| 1289.00     | 6.56                | 6.57 | 6.58 | 6.57 | 0.02             | 26.36          | 32.78 | 29.03 | 1.16   | 1.11   | 1.13   | 1.12   | 1.11   |
| 1376.00     | 6.57                | 6.58 | 6.59 | 6.60 | 0.03             | 25.09          | 35.33 | 27.07 | 1.11   | 1.04   | 1.07   | 1.07   | 1.07   |
| 1463.00     | 6.57                | 6.58 | 6.58 | 6.60 | 0.03             | 24.97          | 40.07 | 26.60 | 1.10   | 1.02   | 1.01   | 1.01   | 1.03   |
| 1550.00     | 6.60                | 6.59 | 6.60 | 6.61 | 0.01             | 25.83          | 45.06 | 27.21 | 1.15   | 1.08   | 1.05   | 1.03   | 1.04   |
| 1637.00     | 6.63                | 6.64 | 6.64 | 6.65 | 0.02             | 28.22          | 41.29 | 29.53 | 1.19   | 1.12   | 1.09   | 1.07   | 1.05   |
| 1724.00     | 6.64                | 6.66 | 6.65 | 6.68 | 0.03             | 32.04          | 37.29 | 32.99 | 1.17   | 1.14   | 1.13   | 1.10   | 1.05   |
| 1898.00     | 6.72                | 6.74 | 6.71 | 6.75 | 0.04             | 34.64          | 34.51 | 38.14 | 1.02   | 1.13   | 1.15   | 1.13   | 1.05   |
| 1970.50     | 6.76                | 6.77 | 6.74 | 6.76 | 0.03             | 28.56          | 35.21 | 31.50 | 1.08   | 1.13   | 1.17   | 1.16   | 1.06   |
| 1999.50     | 6.73                | 6.78 | 6.75 | 6.77 | 0.05             | 26.39          | 36.03 | 28.54 | 1.12   | 1.13   | 1.18   | 1.17   | 1.07   |
| 2057.50     | 6.85                | 6.85 | 6.80 | 6.84 | 0.05             | 22.86          | 37.33 | 24.27 | 1.25   | 1.15   | 1.19   | 1.18   | 1.10   |



### electrical schematic



**Mini-Circuits**  
ISO 9001 ISO 14001 CERTIFIED

ALL NEW  
minicircuits.com

P.O. Box 350166, Brooklyn, New York 11235-0003 (718) 934-4500 Fax (718) 332-4661 For detailed performance specs & shopping online see Mini-Circuits web site



The Design Engineers Search Engine Provides ACTUAL Data Instantly From MINI-CIRCUITS At: [www.minicircuits.com](http://www.minicircuits.com)

RF/IF MICROWAVE COMPONENTS

REV. C  
M112977  
ZB4PD1-2000  
HY/TD/CP/AM  
070810