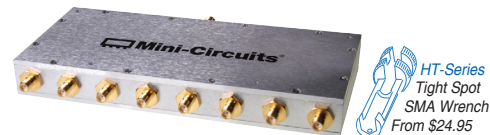


DC Pass

# Power Splitter/Combiner

8 Way-0° 50Ω 800 to 960 MHz

ZB8PD-1+  
ZB8PD-1



## Maximum Ratings

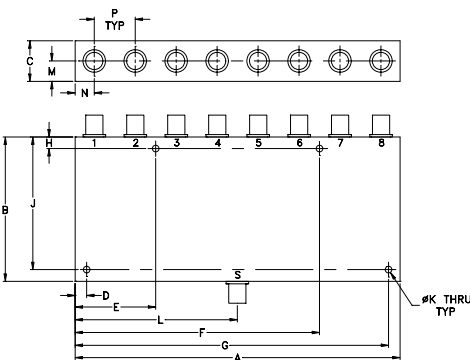
Operating Temperature	-55°C to 100°C
Storage Temperature	-55°C to 100°C
Power Input (as a splitter)	10W max.
Internal Dissipation	0.875W max.
DC Current	1.2A(150mA for each port)

Permanent damage may occur if any of these limits are exceeded.

## Coaxial Connections

SUM PORT	S
PORT 1,2,3,4,5,6,7,8	1,2,3,4,5,6,7,8

## Outline Drawing



## Outline Dimensions (inch/mm)

A	B	C	D	E	F	G	H
7.06	3.13	.88	.250	1.750	5.310	6.810	.250
179.32	79.50	22.35	6.35	44.45	134.87	172.97	6.35

J	K	L	M	N	P	wt
2.875	.144	3.53	.44	.415	.89	grams
73.03	3.66	89.66	11.18	10.54	22.61	800

## Features

- low insertion loss, 0.4 dB typ.
- high isolation, 30 dB typ.
- up to 10W power input as splitter
- rugged shielded case

## Applications

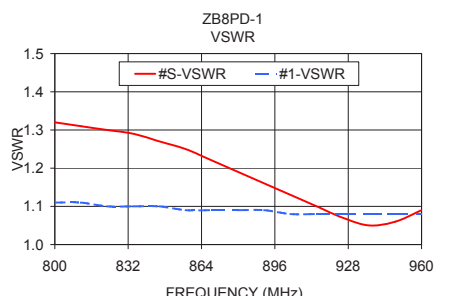
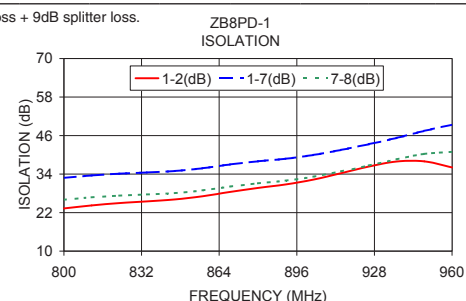
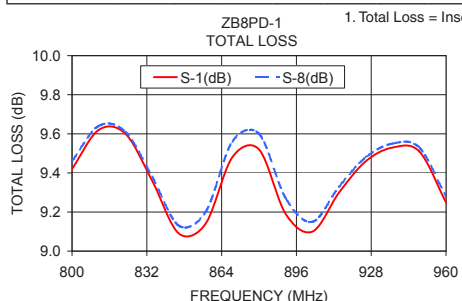
- cellular
- UHF
- instrumentation
- signal processing

## Electrical Specifications

FREQ. RANGE (MHz)	ISOLATION (dB)		INSERTION LOSS (dB) ABOVE 9.0 dB		PHASE UNBALANCE (Degrees)	AMPLITUDE UNBALANCE (dB)	VSWR (:1)			
	Typ.	Min.	Typ.	Max.			S		OUT	
f <sub>L</sub> -f <sub>U</sub>					Max.	Max.	Typ.	Max.	Typ.	Max.
800-960	30	20	0.4	0.9	8.0	0.4	1.22	1.5	1.11	1.30

## Typical Performance Data

Frequency (MHz)	Total Loss <sup>1</sup> (dB)						Amplitude Unbalance (dB)	Isolation (dB)				VSWR S	VSWR 1	VSWR 8
	S-1	S-2	S-3	S-4	S-6	S-8		1-2	1-7	3-4	7-8			
800.00	9.42	9.45	9.42	9.45	9.49	9.46	0.07	23.29	32.82	23.68	26.01	1.32	1.11	1.08
811.42	9.62	9.65	9.65	9.65	9.67	9.64	0.06	24.24	33.57	24.69	26.75	1.31	1.11	1.08
822.85	9.60	9.63	9.64	9.63	9.64	9.61	0.05	24.97	34.12	25.50	27.29	1.30	1.10	1.08
834.28	9.36	9.38	9.41	9.39	9.40	9.38	0.06	25.51	34.52	26.14	27.66	1.29	1.10	1.07
845.71	9.09	9.09	9.13	9.11	9.13	9.13	0.07	26.10	34.96	26.84	28.08	1.27	1.10	1.07
857.14	9.14	9.12	9.15	9.16	9.19	9.20	0.09	27.10	35.81	27.99	28.92	1.25	1.09	1.07
868.57	9.48	9.45	9.47	9.49	9.54	9.56	0.11	28.46	37.01	29.51	30.12	1.22	1.09	1.07
880.00	9.52	9.50	9.49	9.53	9.59	9.60	0.11	29.68	37.99	30.92	31.13	1.19	1.09	1.06
891.42	9.19	9.20	9.17	9.21	9.27	9.27	0.10	30.77	38.78	32.25	31.96	1.16	1.09	1.06
902.85	9.10	9.12	9.08	9.12	9.17	9.15	0.09	32.29	39.95	34.11	33.19	1.13	1.08	1.06
914.28	9.30	9.34	9.32	9.33	9.37	9.33	0.06	34.28	41.53	36.49	34.86	1.10	1.08	1.06
925.71	9.46	9.50	9.49	9.50	9.52	9.48	0.06	36.35	43.31	38.76	36.69	1.07	1.08	1.06
937.14	9.53	9.57	9.58	9.57	9.58	9.55	0.05	37.93	45.26	39.51	38.59	1.05	1.08	1.06
948.57	9.51	9.52	9.55	9.54	9.55	9.53	0.05	37.96	47.45	37.83	40.29	1.06	1.08	1.05
960.00	9.25	9.24	9.27	9.27	9.29	9.28	0.07	36.08	49.39	35.03	40.93	1.09	1.08	1.06



## electrical schematic



### Notes

- Performance and quality attributes and conditions not expressly stated in this specification document are intended to be excluded and do not form a part of this specification document.
- Electrical specifications and performance data contained in this specification document are based on Mini-Circuit's applicable established test performance criteria and measurement instructions.
- The parts covered by this specification document are subject to Mini-Circuit's standard limited warranty and terms and conditions (collectively, "Standard Terms"); Purchasers of this part are entitled to the rights and benefits contained therein. For a full statement of the Standard Terms and the exclusive rights and remedies thereunder, please visit Mini-Circuit's website at [www.minicircuits.com/WCLStore/terms.jsp](http://www.minicircuits.com/WCLStore/terms.jsp)



[www.minicircuits.com](http://www.minicircuits.com) P.O. Box 350166, Brooklyn, NY 11235-0003 (718) 934-4500 sales@minicircuits.com

REV. C  
M149580  
ZB8PD-1  
HY/TD/CP/AM  
150107