

Power Splitter/Combiner

ZC2PD-900

2 Way-0° 50Ω 800 to 900 MHz



CASE STYLE: F183

Maximum Ratings

Operating Temperature	-55°C to 100°C
Storage Temperature	-55°C to 100°C
Power Input (as a splitter)	10W max.
Internal Dissipation	0.125W max.
DC Current	400 mA (200mA for each port)

Permanent damage may occur if any of these limits are exceeded.

Coaxial Connections

SUM PORT	S
PORT 1	1
PORT 2	2

Features

- low insertion loss, 0.1 dB typ.
- high isolation, 30 dB typ.
- up to 10W power input as splitter
- excellent amplitude unbalance, 0.1 dB typ.
- excellent phase unbalance, 0.2 deg. typ.
- rugged shielded case

Applications

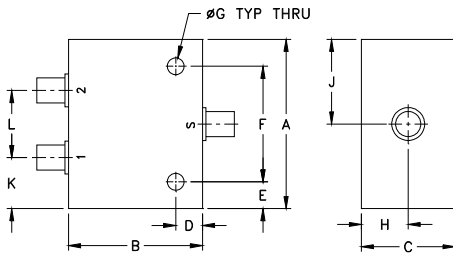
- UHF
- cellular
- communication systems
- instrumentation

Connectors	Model
SMA	ZC2PD-900-S

Electrical Specifications

FREQ. RANGE (MHz)	ISOLATION (dB)		INSERTION LOSS (dB) ABOVE 3.0 dB		PHASE UNBALANCE (Degrees)	AMPLITUDE UNBALANCE (dB)	VSWR (:1)			
	Typ.	Min.	Typ.	Max.			S		OUT	
f_L - f_U					Max.	Max.	Typ.	Max.	Typ.	Max.
800-900	30	20	0.1	0.4	2	0.2	1.10	1.30	1.10	1.30

Outline Drawing



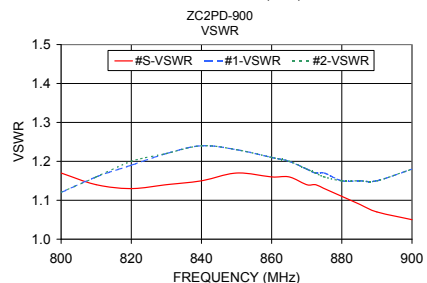
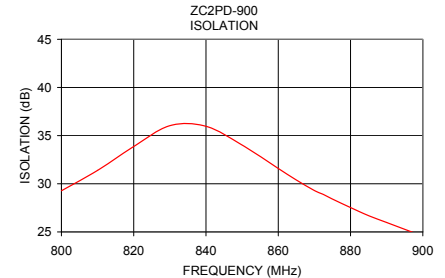
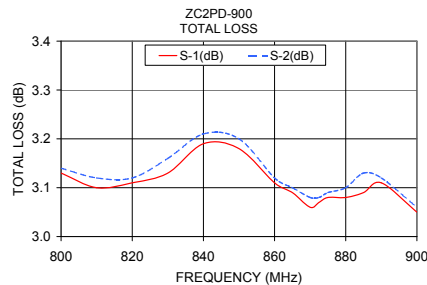
Outline Dimensions (inch/mm)

A	B	C	D	E	F	G		
1.26	1.00	.70	.200	.200	.860	.125		
32.00	25.40	17.78	5.08	5.08	21.84	3.18		
H	J	K	L				wt	
.35	.63	.38	.50				grams	
8.89	16.00	9.65	12.70				24.0	

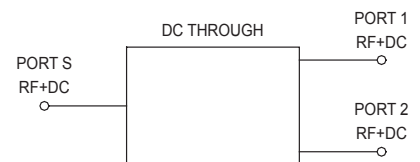
Typical Performance Data

Frequency (MHz)	Total Loss ¹ (dB)		Amplitude Unbalance (dB)	Isolation (dB)	Phase Unbalance (deg.)	VSWR S	VSWR 1	VSWR 2
	S-1	S-2						
800.00	3.13	3.14	0.02	29.27	0.17	1.17	1.12	1.12
810.00	3.10	3.12	0.02	31.39	0.24	1.14	1.16	1.16
820.00	3.11	3.12	0.01	33.87	0.15	1.13	1.19	1.20
830.00	3.13	3.16	0.02	36.03	0.20	1.14	1.22	1.22
840.00	3.19	3.21	0.02	35.97	0.11	1.15	1.24	1.24
850.00	3.18	3.20	0.02	34.02	0.18	1.17	1.23	1.23
860.00	3.11	3.12	0.02	31.59	0.20	1.16	1.21	1.21
865.00	3.09	3.10	0.01	30.39	0.14	1.16	1.20	1.20
870.00	3.06	3.08	0.02	29.30	0.05	1.14	1.18	1.18
872.50	3.07	3.08	0.01	28.89	0.05	1.14	1.17	1.17
875.00	3.08	3.09	0.02	28.41	0.04	1.13	1.17	1.16
880.00	3.08	3.10	0.02	27.53	0.17	1.11	1.15	1.15
885.00	3.09	3.13	0.04	26.69	0.18	1.09	1.15	1.15
890.00	3.11	3.12	0.01	25.98	0.16	1.07	1.15	1.15
900.00	3.05	3.06	0.02	24.56	0.21	1.05	1.18	1.18

1. Total Loss = Insertion Loss + 3dB splitter loss.



electrical schematic



Notes

- A. Performance and quality attributes and conditions not expressly stated in this specification document are intended to be excluded and do not form a part of this specification document.
 B. Electrical specifications and performance data contained in this specification document are based on Mini-Circuit's applicable established test performance criteria and measurement instructions.
 C. The parts covered by this specification document are subject to Mini-Circuit's standard limited warranty and terms and conditions (collectively, "Standard Terms"). Purchasers of this part are entitled to the rights and benefits contained therein. For a full statement of the Standard Terms and the exclusive rights and remedies thereunder, please visit Mini-Circuit's website at www.minicircuits.com/MCLStore/terms.jsp

