

Coaxial Frequency Mixer

ZP-1H+

Level 17 (LO Power +17 dBm) 2 to 600 MHz



BNC version shown
CASE STYLE: GG60

Maximum Ratings

Operating Temperature	-55°C to 100°C
Storage Temperature	-55°C to 100°C
RF Power	200mW
IF Current	40mA

Coaxial Connections

LO	L
RF	R
IF	X

Features

- low conversion loss, 5.9 dB typ.
- high L-R isolation, 50 dB typ., L-I, 48 dB typ.
- rugged shielded case

Applications

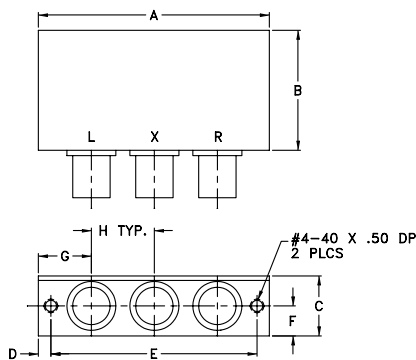
- VHF/UHF
- instrumentation

Connectors	Model	Price	Qty.
BNC	ZP-1H+	\$45.95 ea.	(1-9)
SMA	ZP-1H-S+	\$50.95 ea.	(1-9)

+ RoHS compliant in accordance with EU Directive (2002/95/EC)

The +Suffix has been added in order to identify RoHS Compliance. See our web site for RoHS Compliance methodologies and qualifications.

Outline Drawing



Outline Dimensions (inch/mm)

A	B	C	D	E	F	G	H	wt
2.31	1.20	.60	.125	2.062	.30	.53	.63	grams
58.7	30.5	15.2	3.2	52.4	7.6	13.5	16.0	75.0

Electrical Specifications

FREQUENCY (MHz)	CONVERSION LOSS (dB)	LO-RF ISOLATION (dB)						LO-IF ISOLATION (dB)									
		L		M		U		L		M		U					
LO/RF f_L - f_U	IF \bar{X} σ Max.	Typ.	Min.	Typ.	Min.	Typ.	Min.	Typ.	Min.	Typ.	Min.	Typ.	Min.	Typ.	Min.		
2-600	DC-600	5.90	0.18	7.0	8.0	68	50	50	30	43	25	62	45	48	30	33	22

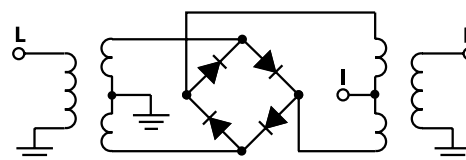
1 dB COMP.: +14 dBm typ.

L = low range [f_L to $10 f_L$] M = mid range [$10 f_L$ to $f_U/2$] U = upper range [$f_U/2$ to f_U]
m = mid band [$2 f_L$ to $f_U/2$]

Typical Performance Data

Frequency (MHz)	Conversion Loss (dB)	Isolation L-R (dB)	Isolation L-I (dB)	VSWR RF Port (:1)	VSWR LO Port (:1)	
						LO +17dBm
2.00	32.00	6.30	62.98	52.28	1.22	1.67
5.00	35.00	5.95	62.06	52.79	1.10	1.60
10.00	40.00	5.92	60.47	52.35	1.03	1.63
20.00	50.00	5.91	57.14	51.13	1.02	1.61
34.13	64.13	5.81	53.27	49.30	1.04	1.58
50.00	80.00	5.72	50.24	47.27	1.06	1.57
66.26	96.26	5.66	48.03	45.61	1.07	1.55
82.33	52.33	5.71	46.33	44.27	1.08	1.54
100.00	70.00	5.63	44.99	43.26	1.09	1.57
130.52	100.52	5.61	43.18	41.91	1.10	1.55
162.65	132.65	5.61	41.46	40.45	1.10	1.55
200.00	170.00	5.60	40.12	39.22	1.08	1.60
259.04	229.04	5.42	38.10	37.51	1.07	1.67
307.24	277.24	5.62	37.54	36.13	1.06	1.70
355.43	325.43	5.86	37.41	36.94	1.05	1.76
387.56	357.56	5.92	36.35	35.99	1.04	1.82
435.76	405.76	5.81	35.35	33.91	1.05	1.84
467.89	437.89	5.90	36.34	33.81	1.06	1.85
483.95	453.95	6.08	36.44	33.54	1.08	1.87
500.00	470.00	6.27	36.27	33.21	1.09	1.90
600.00	570.00	6.18	36.36	33.38	1.09	1.89

Electrical Schematic



Mini-Circuits®
ISO 9001 ISO 14001 CERTIFIED

ALL NEW
minicircuits.com

P.O. Box 350166, Brooklyn, New York 11235-0003 (718) 934-4500 Fax (718) 332-4661 For detailed performance specs & shopping online see Mini-Circuits web site



The Design Engineers Search Engine Provides ACTUAL Data Instantly From MINI-CIRCUITS At: www.minicircuits.com

RF/IF MICROWAVE COMPONENTS

REV. B
M108294
ZP-1H+
DJ/TD/CP
070220
Page 1 of 2

