

Coaxial Amplifier

ZVE-8G+ ZVE-8G

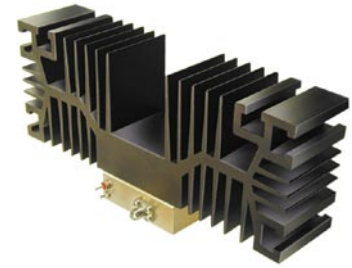
50Ω Medium High Power 2000 to 8000 MHz

Features

- wideband, 2 to 8 GHz
- low noise, 4 dB typ.
- high IP3, +40 dBm typ.
- high dynamic range
- high gain, 30 dB min
- hermetic package, field replaceable connectors

Applications

- satellite communications
- line-of-sight transmitters
- signal generators
- spread-spectrum communication



CASE STYLE: BN333

Connectors	Model	Price	Qty.
SMA	ZVE-8G(+)	\$1095.00 ea.	(1-9)

+ RoHS compliant in accordance with EU Directive (2002/95/EC)

The +Suffix identifies RoHS Compliance. See our web site for RoHS Compliance methodologies and qualifications.

Electrical Specifications

MODEL NO.	FREQUENCY (MHz)		GAIN (dB)		MAXIMUM POWER (dBm)		DYNAMIC RANGE		VSWR (:1) Max.		DC POWER	
	f_L	f_U	Min.	Flatness Max.	Output (1 dB Compr. Min.)	Input (no damage)	NF (dB) Typ.	IP3 (dBm) Typ.	In	Out	Volt (V) Nom.	Current (A) Max.
ZVE-8G(+)	2000	8000	30	±2.0	+30*	+20	4	+40	2.0	2.0	12	1.2

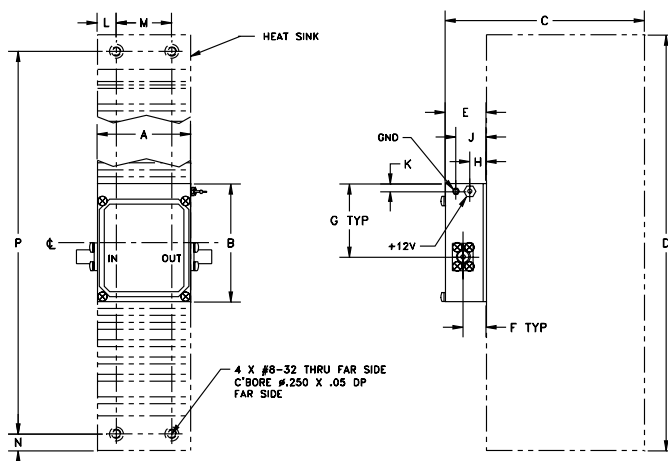
*At 25°C; +30 dBm typ. at 54°C ambient.

Open load is not recommended, potentially can cause damage.
With no load derate max input power by 20 dB

Maximum Ratings

Operating Temperature	-55°C to 54°C
Storage Temperature	-65°C to 150°C
DC Voltage	+18V Max.

Outline Drawing



Outline Dimensions (inch/mm)

A	B	C	D	E	F	G	H	J	K	L	M	N	P	wt
1.680	2.130	3.6	7.5	.75	.42	1.32	.30	.55	.33	.34	1.000	.30	6.900	grams
42.67	54.10	91.44	190.50	19.05	10.67	33.53	7.62	13.97	8.38	8.64	25.40	7.62	175.26	755

Mini-Circuits®
ISO 9001 ISO 14001 CERTIFIED

ALL NEW
minicircuits.com

P.O. Box 350166, Brooklyn, New York 11235-0003 (718) 934-4500 Fax (718) 332-4661 For detailed performance specs & shopping online see Mini-Circuits web site



The Design Engineers Search Engine Provides ACTUAL Data Instantly From MINI-CIRCUITS At: www.minicircuits.com

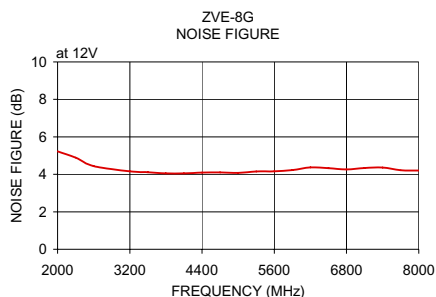
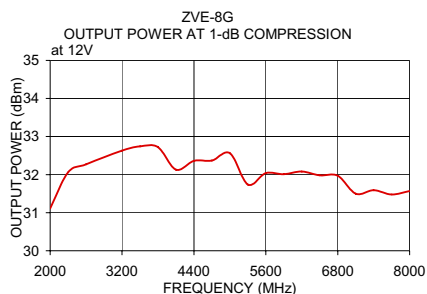
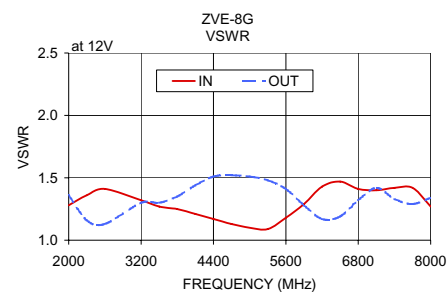
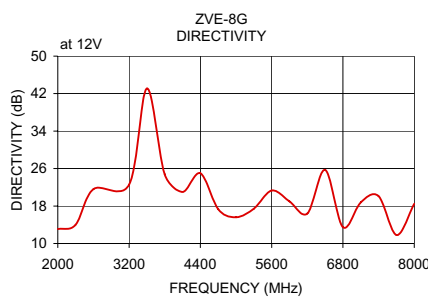
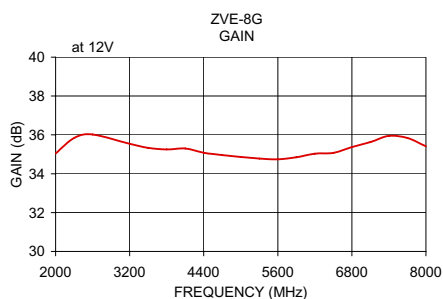
RF/IF MICROWAVE COMPONENTS

REV. A
M113418
ZVE-8G
070911
Page 1 of 2

Typical Performance Data/Curves

ZVE-8G+ ZVE-8G

FREQUENCY (MHz)	GAIN (dB)	DIRECTIVITY (dB)	VSWR (:1)		NOISE FIGURE (dB)	POUT at 1 dB COMPR. (dBm)
	12V	12V	IN	OUT	12V	12V
2000.00	35.04	13.10	1.28	1.36	5.23	31.11
2300.00	35.84	14.00	1.36	1.16	4.89	32.06
2600.00	36.02	21.60	1.41	1.13	4.44	32.27
3200.00	35.54	22.60	1.32	1.30	4.16	32.63
3500.00	35.33	43.10	1.27	1.30	4.11	32.74
3800.00	35.25	24.80	1.25	1.35	4.05	32.72
4100.00	35.30	21.00	1.21	1.44	4.05	32.13
4400.00	35.08	25.00	1.17	1.51	4.09	32.36
4700.00	34.96	17.30	1.13	1.52	4.10	32.37
5000.00	34.86	15.60	1.10	1.51	4.08	32.56
5300.00	34.78	17.40	1.09	1.48	4.15	31.74
5600.00	34.74	21.30	1.18	1.41	4.16	32.04
5900.00	34.85	19.00	1.29	1.28	4.23	32.01
6200.00	35.03	16.40	1.43	1.17	4.37	32.08
6500.00	35.07	25.70	1.47	1.19	4.33	31.98
6800.00	35.37	13.50	1.41	1.32	4.26	31.97
7100.00	35.63	18.80	1.40	1.42	4.34	31.50
7400.00	35.95	20.10	1.42	1.33	4.36	31.59
7700.00	35.84	11.80	1.42	1.29	4.22	31.48
8000.00	35.41	18.50	1.27	1.34	4.20	31.57



Mini-Circuits®
ISO 9001 ISO 14001 CERTIFIED

ALL NEW
minicircuits.com

P.O. Box 350166, Brooklyn, New York 11235-0003 (718) 934-4500 Fax (718) 332-4661 For detailed performance specs & shopping online see Mini-Circuits web site



The Design Engineers Search Engine Provides ACTUAL Data Instantly From MINI-CIRCUITS At: www.minicircuits.com

RF/IF MICROWAVE COMPONENTS