

Directional Coupler

ADC-12-7550+

50/75Ω

5 to 1000 MHz



Maximum Ratings

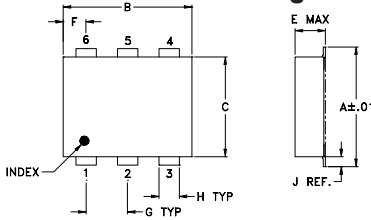
Operating Temperature	-40°C to 85°C
Storage Temperature	-55°C to 100°C

Permanent damage may occur if any of these limits are exceeded.

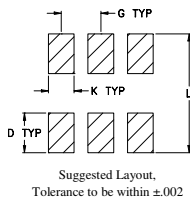
Pin Connections

INPUT 75Ω	1
OUTPUT 75Ω	6
COUPLED 50Ω	3
GROUND	2
50Ω TERM EXTERNAL	4
ISOLATE (DO NOT USE)	5

Outline Drawing



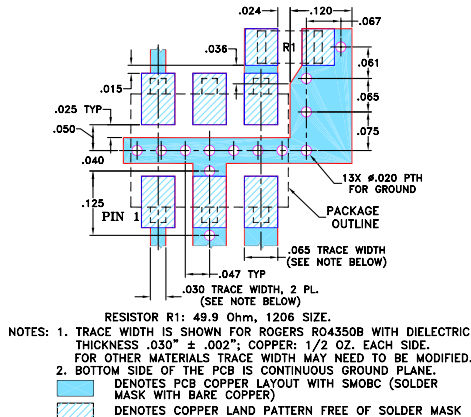
PCB Land Pattern



Outline Dimensions (inch/mm)

A	B	C	D	E	F	G
.272	.310	.220	.100	.112	.055	.100
6.91	7.87	5.59	2.54	2.84	1.40	2.54
H	J	K	L			wt
.030	.026	.065	.300			grams
0.76	0.66	1.65	7.62			0.20

Demo Board MCL P/N: TB-358 Suggested PCB Layout (PL-215)



Notes

- Performance and quality attributes and conditions not expressly stated in this specification document are intended to be excluded and do not form a part of this specification document.
- Electrical specifications and performance data contained in this specification document are based on Mini-Circuits' applicable established test performance criteria and measurement instructions.
- The parts covered by this specification document are subject to Mini-Circuits standard limited warranty and terms and conditions (collectively, "Standard Terms"); Purchasers of this part are entitled to the rights and benefits contained therein. For a full statement of the Standard Terms and the exclusive rights and remedies thereunder, please visit Mini-Circuits' website at www.minicircuits.com/MCLStore/terms.jsp

Features

- wideband, 5-1000 MHz
- low mainline loss, 0.7 dB typ.
- excellent IN/OUT VSWR, 1.2:1 typ.
- unique circuit, 75Ω at IN/OUT and 50Ω at CPL
- aqueous washable
- protected by US Patents 6,133,525 & 6,140,887

Applications

- CATV

CASE STYLE: CD542

+RoHS Compliant

The +Suffix Identifies RoHS Compliance. See our web site for RoHS Compliance methodologies and qualifications

Available Tape and Reel at no extra cost	
Reel Size	Devices/Reel
7"	10, 20, 50, 100, 200, 500
13"	500, 1000

Directional Coupler Electrical Specifications

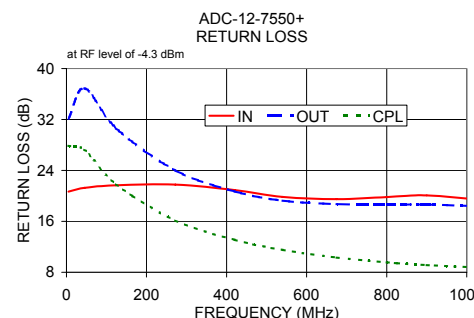
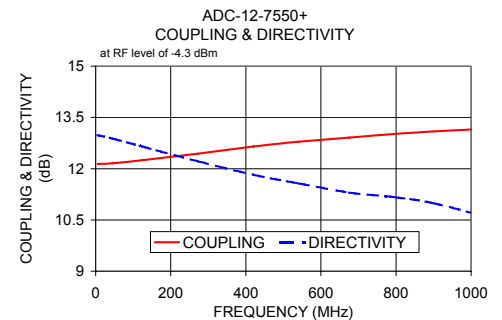
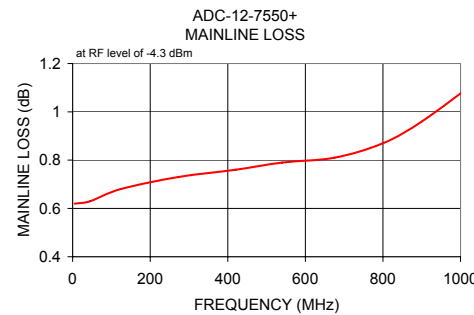
FREQ. (MHz)	COUPLING at 50Ω (dB)		MAINLINE LOSS at 75Ω (dB)			DIRECTIVITY (dB)			VSWR (:1)	POWER INPUT (W)						
	Nom.	Flatness	L		M	U										
			Typ.	Max.	Typ.	Max.	Typ.	Min.								
5-1000	12.5±1.0	±1.0	0.6	1.0	0.7	1.2	0.85	1.8	13	10	12	9	11	7	1.5	1.0

L= 5-50 MHz M= 50-500 MHz U= 500-1000 MHz

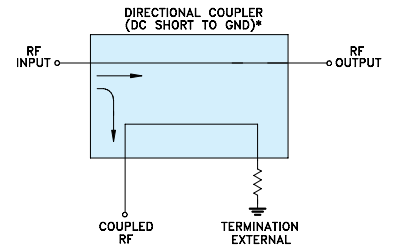
1. Mainline loss includes theoretical power loss at coupled port.

Typical Performance Data

Frequency (MHz)	Mainline Loss (dB) In-Out	Coupling (dB) In-Cpl	Directivity (dB)	Return Loss (dB)		
				In	Out	Cpl
5.00	0.62	12.14	12.98	20.67	32.11	27.86
45.00	0.63	12.16	12.88	21.27	36.89	27.24
124.00	0.68	12.25	12.65	21.67	30.63	21.83
272.00	0.73	12.44	12.22	21.77	24.00	16.13
420.00	0.76	12.65	11.82	20.91	20.71	13.09
540.00	0.79	12.79	11.57	19.83	19.25	11.53
675.00	0.81	12.91	11.30	19.50	18.71	10.32
800.00	0.87	13.02	11.16	19.81	18.63	9.57
900.00	0.96	13.09	10.99	20.08	18.64	9.14
1045.00	1.13	13.17	10.58	19.34	18.34	8.69



Electrical Schematic



* ELECTRICAL SCHEMATIC IS FOR DIRECTIONAL COUPLER WITH INTERNAL TRANSFORMER(S) AND EXTERNAL TERMINATION.

Directional Coupler

ADC-12-7550+

Typical Performance Data

FREQUENCY (MHz)	INSERTION LOSS (dB)	COUPLING (dB)	DIRECTIVITY (dB)	RETURN LOSS		
				IN	(dB) OUT	CPL
0.3	1.00	12.38	13.18	14.05	15.55	18.07
0.4	0.94	12.34	13.10	15.39	17.60	19.72
0.5	0.91	12.32	13.05	16.22	19.07	20.83
0.6	0.88	12.30	13.02	16.78	20.18	21.63
0.7	0.87	12.29	13.00	17.18	21.05	22.24
0.8	0.85	12.28	12.99	17.49	21.76	22.73
0.9	0.84	12.28	12.99	17.73	22.35	23.13
1.0	0.82	12.27	12.98	17.94	22.86	23.47
2.0	0.72	12.21	12.99	19.26	26.34	25.55
3.0	0.66	12.17	12.99	19.99	28.71	26.69
4.0	0.63	12.15	12.98	20.42	30.59	27.40
5.0	0.62	12.14	12.98	20.67	32.11	27.86
30.0	0.61	12.14	12.91	21.27	38.96	28.26
45.0	0.63	12.16	12.88	21.27	36.89	27.24
50.0	0.63	12.17	12.85	21.26	36.28	26.86
124.0	0.68	12.25	12.65	21.67	30.63	21.83
198.0	0.71	12.34	12.45	21.87	26.75	18.45
272.0	0.73	12.44	12.22	21.77	24.00	16.13
346.0	0.74	12.55	12.00	21.52	22.05	14.42
420.0	0.76	12.65	11.82	20.91	20.71	13.09
480.0	0.77	12.73	11.68	20.15	19.77	12.23
540.0	0.79	12.79	11.57	19.83	19.25	11.53
600.0	0.80	12.84	11.41	19.58	18.91	10.92
675.0	0.81	12.91	11.30	19.50	18.71	10.32
750.0	0.85	12.98	11.25	19.56	18.64	9.82
800.0	0.87	13.02	11.16	19.81	18.63	9.57
850.0	0.92	13.06	11.11	19.94	18.63	9.32
900.0	0.96	13.09	10.99	20.08	18.64	9.14
950.0	1.02	13.13	10.89	20.00	18.61	8.95
1045.0	1.13	13.17	10.58	19.34	18.34	8.69
1140.0	1.28	13.21	10.19	17.97	17.68	8.51
1226.0	1.45	13.24	9.76	16.64	16.97	8.37
1312.0	1.67	13.30	9.33	15.27	16.19	8.26
1398.0	1.95	13.40	8.94	13.93	15.57	8.15
1484.0	2.27	13.53	8.63	12.75	15.09	8.05
1570.0	2.59	13.64	8.50	11.67	14.86	7.94
1656.0	2.96	13.79	8.55	10.58	14.79	7.78
1742.0	3.39	14.02	8.79	9.49	14.90	7.61
1828.0	3.93	14.39	9.26	8.56	15.30	7.44
1914.0	4.66	15.09	9.83	7.68	16.21	7.32
2000.0	5.62	16.42	9.72	6.85	18.02	7.30

REV. X1
 ADC-12-7550+
 061030
 Page 1 of 1



IF/RF MICROWAVE COMPONENTS • ISO 9001 ISO 14001 AS 9100 CERTIFIED • RoHS compliant
 P.O. Box 350166, Brooklyn, New York 11235-0003 (718) 934-4500 Fax (718) 332-4661



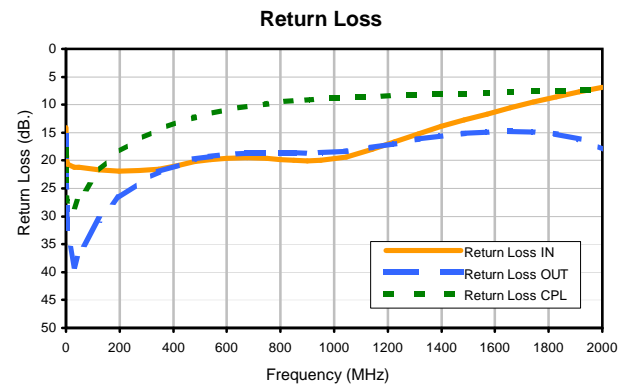
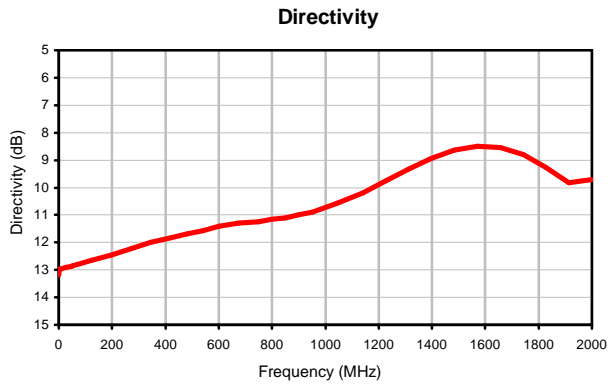
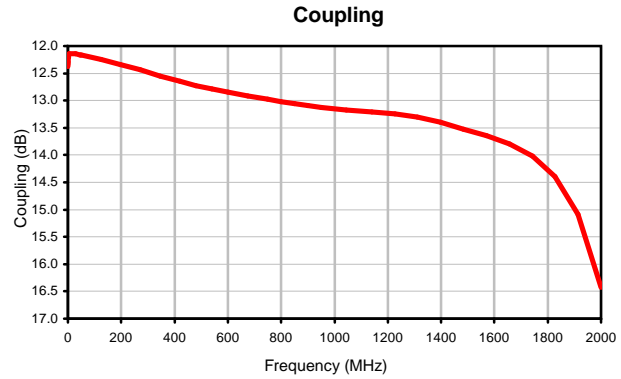
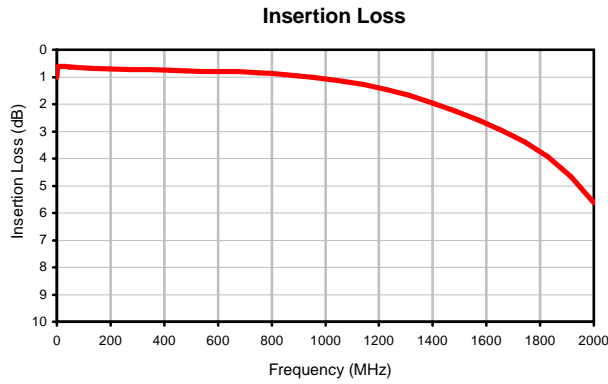
The Design Engineers Search Engine finds the model you need, Instantly • For detailed performance specs & shopping online see



Directional Coupler

ADC-12-7550+

Typical Performance Curves



REV. X1
ADC-12-7550+
061030
Page 1 of 1



IF/RF MICROWAVE COMPONENTS • ISO 9001 ISO 14001 AS 9100 CERTIFIED RoHS compliant
P.O. Box 350166, Brooklyn, New York 11235-0003 (718) 934-4500 Fax (718) 332-4661



The Design Engineers Search Engine finds the model you need, Instantly • For detailed performance specs & shopping online see



Case Style

CD

CD541
CD542
CD636
CD637

Outline Dimensions



PCB Land Pattern



Suggested Layout,
Tolerance to be within $\pm .002$

CASE#	A	B	C	D	E	F	G	H	J	K	L	WT, GRAM
CD541					.082 (2.08)							.15
CD542	.272 (6.91)	.310 (7.87)	.220 (5.58)	.100 (2.54)	.112 (2.84)	.055 (1.40)	.100 (2.54)	.030 (0.76)	.026 (0.66)	.065 (1.65)	.300 (7.62)	.20
CD636					.162 (4.11)							.25
CD637					.206 (5.23)							.40

Dimensions are in inches (mm). Tolerances: 2 Pl. $\pm .01$; 3 Pl. $\pm .005$

Notes:

- Case material: Plastic.
- Termination finish:
For RoHS Case Styles: Tin plate over Nickel plate. All models, (+) suffix.
For RoHS-5 Case Styles: Tin-Lead plate. All models, no (+) suffix.

Mini-Circuits[®]

INTERNET <http://www.minicircuits.com>

P.O. Box 350166, Brooklyn, New York 11235-0003 (718) 934-4500 Fax (718) 332-4661

Distribution Centers NORTH AMERICA 800-654-7949 • 417-335-5935 • Fax 417-335-5945 • EUROPE 44-1252-832600 • Fax 44-1252-837010

Mini-Circuits ISO 9001 & ISO 14001 Certified

Tape & Reel Packaging TR-F34



Tape Width, mm	Device Cavity Pitch, mm	Reel Size, inches	Devices per Reel see note	
16	12	7	Small quantity standard (see note)	20
				50
			Standard	100
				200
		13	Standard	500
				1000

Note: Availability of small reel quantity varies by model.
Refer to pricing and availability on individual model dashboard.

Mini-Circuits carrier tape materials provide protection from ESD (Electro-Static Discharge) during handling and transportation. Tapes are static dissipative and comply with industry standards EIA-481/EIA-541.

Go to: www.minicircuits.com/pages/pdfs/tape.pdf



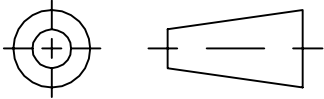
INTERNET <http://www.minicircuits.com>

P.O. Box 350166, Brooklyn, New York 11235-0003 (718) 934-4500 Fax (718) 332-4661

Distribution Centers NORTH AMERICA 800-654-7949 • 417-335-5935 • Fax 417-335-5945 • EUROPE 44-1252-832600 • Fax 44-1252-837010

Mini-Circuits ISO 9001 & ISO 14001 Certified

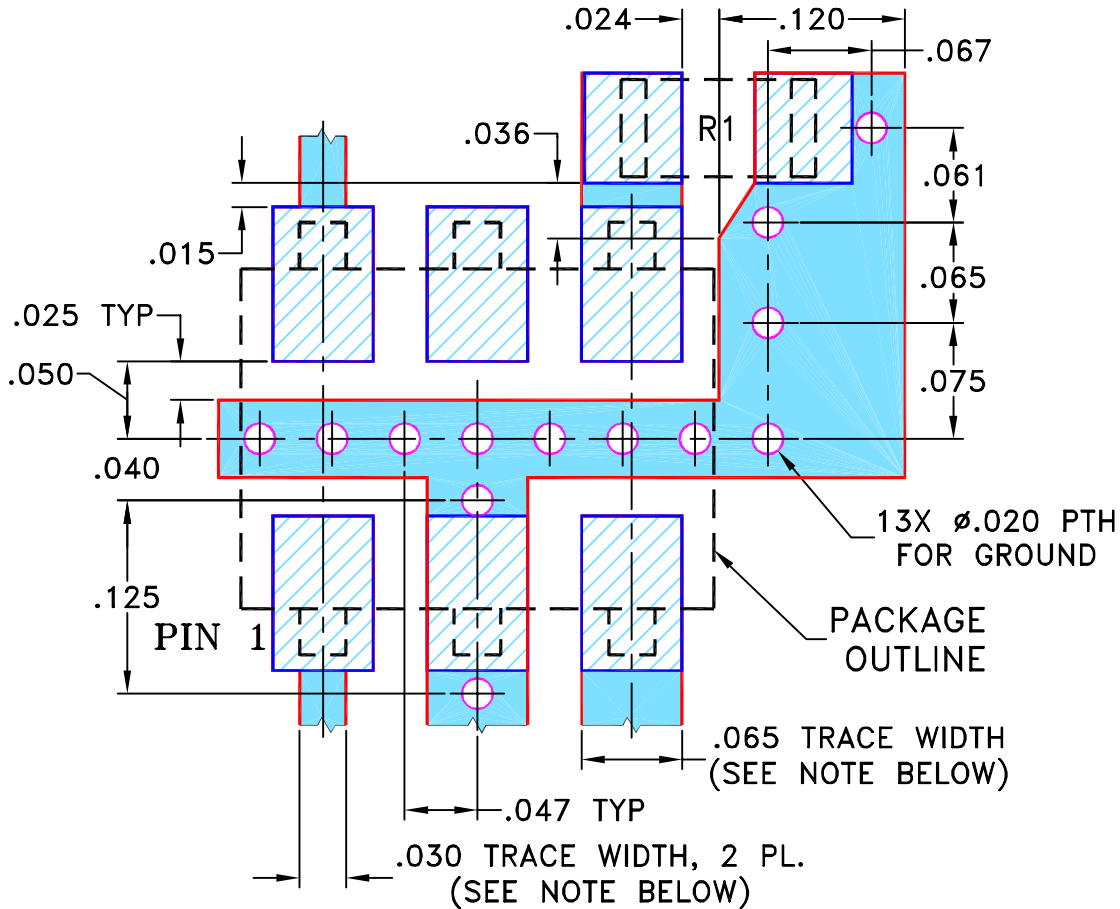
THIRD ANGLE PROJECTION



REVISIONS

REV OR	ECN No.	DESCRIPTION	DATE	DR	AUTH
	M100810	NEW RELEASE	02/13/06	MMG	DY

SUGGESTED MOUNTING CONFIGURATION FOR CD542 CASE STYLE, "kd" PIN CONNECTION



RESISTOR R1: 49.9 Ohm, 1206 SIZE.

- NOTES: 1. TRACE WIDTH IS SHOWN FOR ROGERS R04350B WITH DIELECTRIC THICKNESS .030" ± .002"; COPPER: 1/2 OZ. EACH SIDE. FOR OTHER MATERIALS TRACE WIDTH MAY NEED TO BE MODIFIED.
 2. BOTTOM SIDE OF THE PCB IS CONTINUOUS GROUND PLANE.

- DENOTES PCB COPPER LAYOUT WITH SMOBC (SOLDER MASK WITH BARE COPPER)
- DENOTES COPPER LAND PATTERN FREE OF SOLDER MASK

UNLESS OTHERWISE SPECIFIED	INITIALS	DATE
DIMENSIONS ARE IN INCHES	DRAWN MMG	12/29/05
TOLERANCES ON:	CHECKED AV	02/13/06
2 PL DECIMALS ±	APPROVED DY	02/13/06
3 PL DECIMALS ± .005		
ANGLES ±		
FRACTIONS ±		

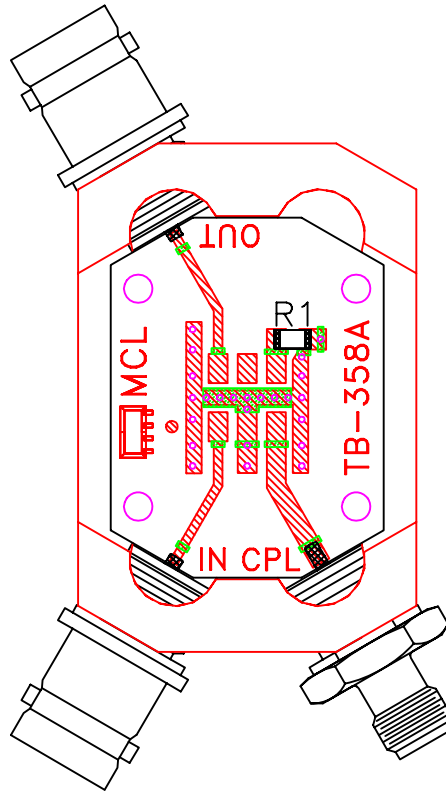
Mini-Circuits® 13 Neptune Avenue
Brooklyn NY 11235

PL, kd, 50/75, CD542, ADC, TB-358

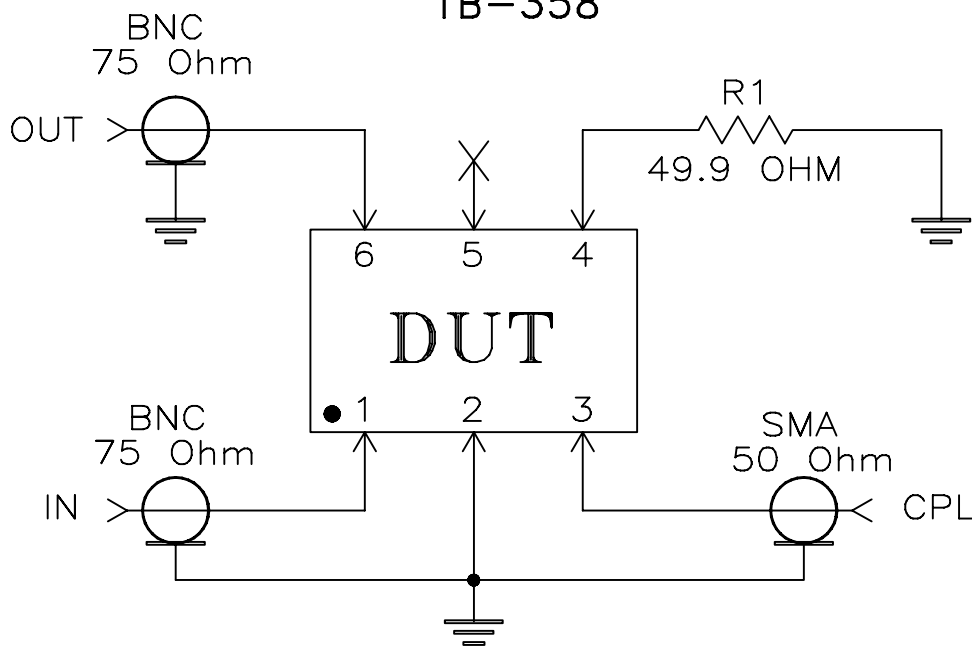
Mini-Circuits®
 THIS DOCUMENT AND ITS CONTENTS ARE THE PROPERTY OF MINI-CIRCUITS. EXCEPT FOR USE EXPRESSLY GRANTED, IN WRITING, TO ITS VENDORS, VENDEE AND THE UNITED STATES GOVERNMENT, MINI-CIRCUITS RESERVES ALL PROPRIETARY DESIGN, USE, MANUFACTURING AND REPRODUCTION RIGHTS THERETO. THESE CONTENTS SHALL NOT BE USED, DUPLICATED OR DISCLOSED TO ANY OUTSIDE PARTY, IN WHOLE OR IN PART, WITHOUT WRITTEN PERMISSION OF MINI-CIRCUITS.
 ASHEETA1.DWG REV:A DATE:01/12/95

SIZE	CODE IDENT	DRAWING NO:	REV:
A	15542	98-PL-215	OR
FILE:	98PL215	SCALE: 8:1	SHEET: 1 OF 1

Evaluation Board and Circuit




TB-358



Schematic Diagram

Notes:

1. BNC and SMA Female connectors
2. PCB Material: Rogers RO4350 or equivalent,
Dielectric Constant=3.5, Thickness=.030 inch.

 Mini-Circuits®



All Mini-Circuits products are manufactured under exacting quality assurance and control standards, and are capable of meeting published specifications after being subjected to any or all of the following physical and environmental test.

Specification	Test/Inspection Condition	Reference/Spec
Operating Temperature	-40° to 85°C Ambient Environment	Individual Model Data Sheet
Storage Temperature	-55° to 100° C Ambient Environment	Individual Model Data Sheet
Humidity	90 to 95% RH, 240 hours, 50°C	MIL-STD-202, Method 103, Condition A, Except 50°C and end-point electrical test done within 12 hours
Thermal Shock	-55° to 100°C, 100 cycles	MIL-STD-202, Method 107, Condition A-3, except +100°C
Solder Reflow Heat	Sn-Pb Eutetic Process: 225°C peak Pb-Free Process 245° - 250°C peak	J-STD-020, Table 4-1, 4-2 and 5-2, Figure 5-1
Solderability	10X Magnification	J-STD-002, 95% Coverage
Vibration (High Frequency)	20g peak, 10-2000 Hz, 12 times in each of three perpendicular directions (total 36)	MIL-STD-202, Method 204, Condition D
Mechanical Shock	50g, 11 ms, 1/2-sine, 18 shocks: 3 each direction, each of 3 axes	MIL-STD-202, Method 213, Condition A
Marking Resistance to Solvents	Isopropyl alcohol + mineral spirits at 25°C; terpene defluxer at 25°C; distilled water + proylene glycol monomethyl ether + monoethanolamine at 63°C to 70°C	MIL-STD-202, Method 215