

Non-Catalog Model

Frequency Mixer

Level 7 (LO Power +7 dBm)

ADE-32

Important Note

This is a non-catalog model and can be manufactured on specific request. Pricing and delivery information can be supplied upon request.



Please click "Back", and then click "Contact Us" for Applications support.

CASE STYLE : CD542

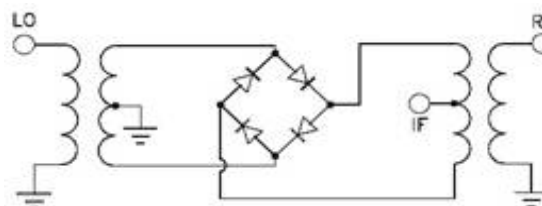
ELECTRICAL SPECIFICATIONS 50Ω @ +25°C					
Parameter		Min.	Typ.	Max.	Units
Frequency	LO (fL to fU)	2500		3200	MHz
	RF (fL to fU)	2500		3200	MHz
	IF	0		1200	MHz
Conversion Loss			5.4	9.4	dB
LO-RF Isolation		20	29		dB
LO-IF Isolation		20	30		dB
IP3 Input			+15		dBm
1 dB Comp. Input Power			+1		dBm

Note: Aqueous washable.

MAXIMUM RATINGS	
Operating Temperature	-40°C to 85°C
Storage Temperature	-55°C to 100°C
RF Power	50mW
IF Current	40mA

PIN CONNECTIONS	
LO	6
RF	4
IF	3
GROUND	1, 2, 5

Electrical Schematics



Typical Performance Data

RF (IN) (MHz)	LO (MHz)	CONVERSION LOSS IF FIXED @IF(OUT)=30MHz (dB)		
		@LO (dBm)		
		+4	+7	+10
1200.0	1230.0	13.23	11.10	10.33
1260.0	1290.0	11.68	10.01	9.48
1320.0	1350.0	10.69	9.16	8.78
1380.0	1410.0	9.43	8.41	8.09
1440.0	1470.0	8.69	7.85	7.55
1500.0	1530.0	8.06	7.21	6.94
1560.0	1590.0	7.41	6.69	6.48
1620.0	1650.0	6.99	6.23	5.99
1680.0	1710.0	6.77	5.88	5.57
1740.0	1770.0	7.02	5.94	5.44
1800.0	1830.0	7.16	6.25	5.61
1860.0	1890.0	6.60	5.86	5.47
1920.0	1950.0	6.14	5.53	5.21
1980.0	2010.0	5.87	5.40	5.17
2060.0	2090.0	5.77	5.40	5.24
2120.0	2150.0	5.79	5.47	5.30
2200.0	2230.0	5.94	5.63	5.45
2260.0	2290.0	5.98	5.70	5.54
2340.0	2370.0	6.10	5.82	5.64
2400.0	2430.0	6.21	5.95	5.75
2480.0	2510.0	6.39	6.12	5.92
2540.0	2570.0	6.59	6.30	6.13
2620.0	2650.0	6.94	6.62	6.44
2680.0	2710.0	7.21	6.86	6.65
2760.0	2790.0	7.64	7.29	7.09
2820.0	2850.0	8.02	7.59	7.34
2900.0	2930.0	8.33	7.94	7.65
2960.0	2990.0	8.55	8.17	7.90
3040.0	3070.0	8.77	8.43	8.18
3100.0	3130.0	8.89	8.53	8.29
3180.0	3210.0	9.22	8.73	8.52
3240.0	3270.0	9.51	8.95	8.72
3320.0	3350.0	10.09	9.31	8.92
3380.0	3410.0	10.63	9.76	9.22
3460.0	3490.0	10.71	10.20	9.91
3520.0	3550.0	10.77	10.20	9.94
3600.0	3630.0	11.07	10.47	10.23
3660.0	3690.0	11.47	10.60	10.41
3740.0	3770.0	11.85	10.45	10.35
3800.0	3830.0	12.69	11.00	10.54

RF (IN) (MHz)	LO (MHz)	IP3 INPUT (dBm)		
		@LO (dBm)		
		+4	+7	+10
1200.0	1230.0	9.69	15.21	17.38
1260.0	1290.0	10.22	14.46	14.46
1320.0	1350.0	9.35	11.89	9.41
1380.0	1410.0	10.21	12.22	11.68
1440.0	1470.0	10.96	11.59	12.71
1500.0	1530.0	10.95	11.64	12.30
1560.0	1590.0	9.62	10.34	10.92
1620.0	1650.0	6.55	9.19	10.29
1680.0	1710.0	2.93	6.93	8.94
1740.0	1770.0	3.88	2.80	4.88
1800.0	1830.0	6.03	7.31	2.95
1860.0	1890.0	5.08	7.18	5.45
1920.0	1950.0	6.86	8.95	9.52
1980.0	2010.0	8.59	11.02	11.12
2060.0	2090.0	10.60	11.87	11.79
2120.0	2150.0	10.21	10.54	10.71
2200.0	2230.0	7.54	7.92	8.54
2260.0	2290.0	7.87	8.12	8.63
2340.0	2370.0	7.80	8.23	8.71
2400.0	2430.0	7.88	10.95	12.96
2480.0	2510.0	10.63	13.29	15.63
2540.0	2570.0	11.21	14.71	17.58
2620.0	2650.0	10.77	15.07	17.49
2680.0	2710.0	9.93	13.82	16.31
2760.0	2790.0	10.04	12.79	16.41
2820.0	2850.0	12.14	12.66	15.21
2900.0	2930.0	13.84	15.10	15.37
2960.0	2990.0	15.34	15.05	15.62
3040.0	3070.0	14.68	14.76	16.25
3100.0	3130.0	10.62	11.70	12.93
3180.0	3210.0	9.89	13.58	15.55
3240.0	3270.0	10.72	14.37	16.22
3320.0	3350.0	13.34	16.23	17.06
3380.0	3410.0	17.92	15.46	17.09
3460.0	3490.0	15.98	14.86	16.56
3520.0	3550.0	12.21	17.90	18.42
3600.0	3630.0	11.35	16.75	18.89
3660.0	3690.0	12.67	15.35	18.80
3740.0	3770.0	12.10	13.66	18.82
3800.0	3830.0	17.51	16.45	18.73

RF (IN) (MHz)	LO (MHz)	COMPRESSION @RF IN=+1dBm (dB)		
		@LO (dBm)		
		+4	+7	+10
1200.0	1230.0	-0.16	0.11	0.20
1260.0	1290.0	0.15	0.36	0.40
1320.0	1350.0	0.45	0.54	0.51
1380.0	1410.0	0.84	0.62	0.48
1440.0	1470.0	1.04	0.69	0.49
1500.0	1530.0	1.24	0.92	0.61
1560.0	1590.0	1.50	1.19	0.84
1620.0	1650.0	1.76	1.62	1.27
1680.0	1710.0	1.74	1.92	1.78
1740.0	1770.0	1.18	1.69	1.87
1800.0	1830.0	0.81	1.15	1.52
1860.0	1890.0	1.10	1.18	1.30
1920.0	1950.0	1.21	1.15	1.13
1980.0	2010.0	1.29	1.02	0.96
2060.0	2090.0	1.10	0.79	0.68
2120.0	2150.0	0.97	0.65	0.53
2200.0	2230.0	0.91	0.56	0.38
2260.0	2290.0	0.89	0.57	0.35
2340.0	2370.0	0.85	0.49	0.32
2400.0	2430.0	0.85	0.42	0.27
2480.0	2510.0	0.75	0.41	0.21
2540.0	2570.0	0.65	0.33	0.17
2620.0	2650.0	0.59	0.21	0.10
2680.0	2710.0	0.54	0.23	0.10
2760.0	2790.0	0.41	0.20	0.08
2820.0	2850.0	0.32	0.17	0.08
2900.0	2930.0	0.33	0.16	0.07
2960.0	2990.0	0.28	0.13	0.06
3040.0	3070.0	0.22	0.09	0.06
3100.0	3130.0	0.24	0.10	0.04
3180.0	3210.0	0.23	0.11	0.04
3240.0	3270.0	0.22	0.10	0.05
3320.0	3350.0	0.17	0.12	0.06
3380.0	3410.0	0.07	0.04	0.05
3460.0	3490.0	0.17	0.01	0.02
3520.0	3550.0	0.13	0.04	0.04
3600.0	3630.0	0.12	0.04	0.03
3660.0	3690.0	0.10	0.04	0.03
3740.0	3770.0	0.05	0.13	0.02
3800.0	3830.0	-0.12	0.06	0.06

Typical Performance Data

IF (OUT) (MHz)	LO (MHz)	CONVERSION LOSS VS. IF FREQUENCY @RF(IN)=2850MHz (dB)	IF (OUT) (MHz)	LO (MHz)	CONVERSION LOSS VS. IF FREQUENCY @RF(IN)=2489.89MHz (dB)	IF (OUT) (MHz)	LO (MHz)	CONVERSION LOSS VS. IF FREQUENCY @RF(IN)=3210.10MHz (dB)
		@LO (dBm)			@LO (dBm)			@LO (dBm)
		+7			+7			+7
1830.00	1020.00	10.66	10.10	2500.00	6.41	1650.10	1560.00	10.50
1743.33	1106.67	9.18	50.10	2540.00	6.11	1610.10	1600.00	10.12
1656.67	1193.33	8.20	90.10	2580.00	6.06	1570.10	1640.00	9.81
1570.00	1280.00	7.35	130.10	2620.00	6.11	1530.10	1680.00	9.59
1483.33	1366.67	7.23	170.10	2660.00	6.07	1490.10	1720.00	9.80
1396.67	1453.33	7.18	210.10	2700.00	6.13	1450.10	1760.00	9.85
1310.00	1540.00	7.10	250.10	2740.00	6.21	1410.10	1800.00	9.75
1223.33	1626.67	7.49	290.10	2780.00	6.24	1370.10	1840.00	9.65
1136.67	1713.33	7.50	330.10	2820.00	6.37	1330.10	1880.00	9.47
1050.00	1800.00	7.52	370.10	2860.00	6.39	1290.10	1920.00	9.37
963.33	1886.67	7.70	410.10	2900.00	6.49	1250.10	1960.00	9.04
876.67	1973.33	7.35	470.10	2960.00	6.64	1210.10	2000.00	8.85
790.00	2060.00	7.33	510.10	3000.00	6.67	1170.10	2040.00	8.83
703.33	2146.67	7.48	570.10	3060.00	6.32	1130.10	2080.00	8.78
616.67	2233.33	7.63	610.10	3100.00	6.34	1090.10	2120.00	8.93
508.33	2341.67	7.15	670.10	3160.00	6.50	1050.10	2160.00	8.87
421.67	2428.33	7.31	710.10	3200.00	6.52	1010.10	2200.00	8.63
313.33	2536.67	7.63	770.10	3260.00	6.39	970.10	2240.00	8.73
226.67	2623.33	7.73	810.10	3300.00	6.52	930.10	2280.00	8.64
118.33	2731.67	7.73	870.10	3360.00	6.69	890.10	2320.00	8.64
31.67	2818.33	7.74	910.10	3400.00	6.83	850.10	2360.00	8.53
65.00	2915.00	7.83	970.10	3460.00	6.65	810.10	2400.00	8.59
138.33	2988.33	7.66	1010.10	3500.00	6.79	770.10	2440.00	8.72
230.00	3080.00	7.54	1070.10	3560.00	6.95	730.10	2480.00	8.82
303.33	3153.33	7.34	1110.10	3600.00	7.05	690.10	2520.00	8.95
395.00	3245.00	7.22	1170.10	3660.00	7.00	650.10	2560.00	8.92
468.33	3318.33	7.34	1210.10	3700.00	7.10	610.10	2600.00	8.95
560.00	3410.00	7.19	1270.10	3760.00	7.15	570.10	2640.00	8.99
633.33	3483.33	7.06	1310.10	3800.00	7.39	530.10	2680.00	9.01
725.00	3575.00	6.59	1370.10	3860.00	7.69	490.10	2720.00	8.98
798.33	3648.33	6.44	1410.10	3900.00	7.87	450.10	2760.00	8.97
890.00	3740.00	6.34	1470.10	3960.00	7.72	410.10	2800.00	9.02
963.33	3813.33	6.18	1510.10	4000.00	7.60	370.10	2840.00	9.07
1055.00	3905.00	6.39	1570.10	4060.00	7.73	310.10	2900.00	9.22
1128.33	3978.33	6.73	1610.10	4100.00	7.67	270.10	2940.00	9.28
1220.00	4070.00	7.14	1670.10	4160.00	7.83	210.10	3000.00	9.37
1293.33	4143.33	6.99	1710.10	4200.00	8.08	170.10	3040.00	9.40
1385.00	4235.00	6.78	1770.10	4260.00	9.22	110.10	3100.00	9.44
1458.33	4308.33	7.03	1810.10	4300.00	9.92	70.10	3140.00	9.29
1550.00	4400.00	7.28	1870.10	4360.00	11.56	10.10	3200.00	9.36

Typical Performance Data

LO (MHz)	LO-RF ISOLATION (dB)			LO-IF ISOLATION (dB)		
	@LO (dBm)			@LO (dBm)		
	+4	+7	+10	+4	+7	+10
1230.0	26.05	26.67	27.07	10.23	11.10	11.37
1290.0	26.14	26.81	27.13	10.88	11.67	11.81
1350.0	26.04	26.84	27.28	11.34	12.01	12.27
1410.0	25.81	26.60	27.28	11.51	12.08	12.29
1470.0	25.15	26.02	26.72	10.74	11.41	11.57
1530.0	24.61	25.46	26.07	9.81	10.55	10.66
1590.0	24.46	25.28	25.78	9.23	9.90	10.08
1650.0	24.48	25.30	25.75	8.47	9.19	9.42
1710.0	24.57	25.28	25.73	7.97	8.73	9.11
1770.0	24.77	25.44	25.79	8.08	8.73	9.21
1830.0	25.16	25.86	26.02	9.24	9.49	9.60
1890.0	25.71	26.55	26.72	11.04	11.01	11.01
1950.0	26.35	27.39	27.69	13.07	13.05	12.85
2010.0	27.22	28.82	29.22	15.61	15.41	14.93
2090.0	28.57	30.65	31.48	18.59	17.96	17.45
2150.0	28.50	30.61	32.03	20.51	19.84	19.22
2230.0	28.77	30.93	32.60	22.98	22.01	21.28
2290.0	29.18	31.44	33.15	24.77	23.72	22.91
2370.0	28.10	30.23	31.91	27.41	26.19	25.19
2430.0	28.73	31.34	33.59	29.51	28.19	27.02
2510.0	30.11	34.44	38.18	31.63	30.10	28.86
2570.0	29.97	35.36	40.19	33.03	31.55	30.26
2650.0	28.32	32.67	37.05	34.23	33.46	32.43
2710.0	28.55	31.43	34.27	34.93	35.28	34.60
2790.0	28.96	33.03	35.19	34.68	36.52	36.93
2850.0	27.86	32.18	35.13	33.88	36.38	37.90
2930.0	26.36	30.00	32.45	32.50	34.85	36.75
2990.0	25.78	28.94	30.98	31.90	33.68	35.25
3070.0	25.57	28.58	30.62	31.47	32.54	33.54
3130.0	25.08	28.15	30.10	31.20	31.92	32.55
3210.0	25.02	27.94	29.42	31.26	31.54	31.75
3270.0	25.94	28.32	29.38	31.64	31.52	31.23
3350.0	26.89	28.70	29.22	31.94	31.48	30.81
3410.0	27.44	29.46	29.69	31.57	31.91	30.90
3490.0	28.33	30.58	30.85	30.96	31.57	30.92
3550.0	28.23	29.43	29.72	30.91	31.29	30.50
3630.0	28.63	28.41	28.56	30.55	31.20	30.31
3690.0	30.50	30.03	29.59	30.15	30.95	30.19
3770.0	32.68	32.04	31.45	30.02	30.47	29.61
3830.0	33.97	32.20	31.07	30.00	30.25	29.12

RF (IN) (MHz)	LO (MHz)	RF-IF ISOLATION (dB)		
		@LO (dBm)		
		+4	+7	+10
1200.0	1230.0	18.51	20.29	20.64
1260.0	1290.0	18.38	19.60	19.70
1320.0	1350.0	17.54	18.79	19.07
1380.0	1410.0	18.07	19.25	19.72
1440.0	1470.0	18.74	20.29	21.37
1500.0	1530.0	20.04	21.50	22.66
1560.0	1590.0	21.48	22.88	23.43
1620.0	1650.0	24.18	26.06	26.00
1680.0	1710.0	27.12	29.01	29.08
1740.0	1770.0	37.49	43.95	37.11
1800.0	1830.0	37.36	35.88	33.82
1860.0	1890.0	30.06	30.46	29.85
1920.0	1950.0	27.15	27.45	27.68
1980.0	2010.0	25.26	25.72	26.05
2060.0	2090.0	23.98	24.10	24.38
2120.0	2150.0	23.42	23.37	23.40
2200.0	2230.0	23.10	22.81	22.51
2260.0	2290.0	22.37	22.01	21.78
2340.0	2370.0	21.16	20.53	20.19
2400.0	2430.0	20.38	19.79	19.31
2480.0	2510.0	19.33	18.73	18.33
2540.0	2570.0	18.69	18.20	17.83
2620.0	2650.0	17.97	17.69	17.57
2680.0	2710.0	17.41	17.22	17.17
2760.0	2790.0	16.75	16.76	16.72
2820.0	2850.0	16.22	16.26	16.37
2900.0	2930.0	15.52	15.70	15.78
2960.0	2990.0	14.91	15.23	15.39
3040.0	3070.0	14.20	14.71	15.00
3100.0	3130.0	13.68	14.34	14.68
3180.0	3210.0	13.12	14.02	14.42
3240.0	3270.0	13.12	13.90	14.33
3320.0	3350.0	12.97	13.63	13.96
3380.0	3410.0	12.94	13.60	13.90
3460.0	3490.0	13.15	13.92	14.19
3520.0	3550.0	13.37	13.98	14.30
3600.0	3630.0	13.88	14.50	14.81
3660.0	3690.0	14.21	15.01	15.41
3740.0	3770.0	14.53	15.35	15.84
3800.0	3830.0	14.88	15.55	15.90

Typical Performance Data

RF (IN) (MHz)	LO (MHz)	RF VSWR (:1)			LO (MHz)	LO VSWR (:1)			IF (OUT) (MHz)	IF VSWR @LO=3200MHz (:1)		
		@LO (dBm)				@LO (dBm)				@LO (dBm)		
		+4	+7	+10		+4	+7	+10		+4	+7	+10
1200.0	1230.0	12.52	11.24	10.62	1230.0	4.67	2.71	2.17	10.0	3.69	3.02	2.53
1260.0	1290.0	10.89	9.48	8.99	1290.0	4.25	2.49	2.12	50.0	3.69	3.00	2.50
1320.0	1350.0	8.01	7.11	6.61	1350.0	4.09	2.38	2.08	90.0	3.79	3.08	2.57
1380.0	1410.0	7.20	6.53	5.85	1410.0	3.54	2.17	2.03	130.0	3.73	3.02	2.54
1440.0	1470.0	5.77	5.34	4.75	1470.0	3.02	1.99	1.94	170.0	3.76	3.03	2.55
1500.0	1530.0	4.61	4.26	3.91	1530.0	2.71	1.85	1.91	210.0	3.72	3.00	2.54
1560.0	1590.0	3.83	3.56	3.35	1590.0	2.29	1.74	1.91	250.0	3.63	2.93	2.48
1620.0	1650.0	3.04	2.77	2.68	1650.0	2.05	1.64	1.89	290.0	3.58	2.90	2.46
1680.0	1710.0	2.51	2.22	2.07	1710.0	1.85	1.61	1.94	330.0	3.45	2.80	2.37
1740.0	1770.0	2.25	2.05	1.88	1770.0	1.71	1.65	2.04	370.0	3.37	2.74	2.33
1800.0	1830.0	2.05	1.84	1.70	1830.0	1.64	1.72	2.17	410.0	3.19	2.62	2.24
1860.0	1890.0	1.93	1.73	1.59	1890.0	1.58	1.79	2.32	450.0	3.06	2.53	2.17
1920.0	1950.0	2.05	1.83	1.72	1950.0	1.56	1.81	2.37	490.0	2.88	2.40	2.07
1980.0	2010.0	2.12	1.90	1.80	2010.0	1.47	1.81	2.46	530.0	2.72	2.30	2.00
2060.0	2090.0	2.22	1.96	1.83	2090.0	1.28	1.82	2.57	570.0	2.52	2.15	1.89
2120.0	2150.0	2.35	2.08	1.92	2150.0	1.21	1.81	2.57	610.0	2.36	2.03	1.80
2200.0	2230.0	2.59	2.35	2.17	2230.0	1.22	1.82	2.57	650.0	2.18	1.88	1.70
2260.0	2290.0	2.39	2.22	2.12	2290.0	1.30	1.90	2.68	690.0	2.02	1.74	1.59
2340.0	2370.0	2.29	2.12	2.02	2370.0	1.40	1.94	2.72	730.0	1.89	1.64	1.52
2400.0	2430.0	2.45	2.33	2.29	2430.0	1.47	1.87	2.57	770.0	1.72	1.51	1.43
2480.0	2510.0	2.54	2.53	2.58	2510.0	1.67	1.92	2.55	810.0	1.62	1.43	1.39
2540.0	2570.0	2.43	2.54	2.67	2570.0	1.90	2.06	2.68	850.0	1.48	1.34	1.36
2620.0	2650.0	2.55	2.80	3.03	2650.0	2.22	2.21	2.71	890.0	1.38	1.28	1.35
2680.0	2710.0	2.71	2.98	3.20	2710.0	2.45	2.35	2.74	930.0	1.29	1.26	1.39
2760.0	2790.0	2.81	3.20	3.42	2790.0	2.71	2.52	2.84	970.0	1.20	1.23	1.42
2820.0	2850.0	2.75	3.24	3.60	2850.0	2.89	2.62	2.89	1010.0	1.16	1.26	1.46
2900.0	2930.0	2.77	3.31	3.78	2930.0	3.15	2.72	2.95	1050.0	1.09	1.30	1.53
2960.0	2990.0	2.75	3.28	3.72	2990.0	3.25	2.76	2.94	1110.0	1.14	1.36	1.57
3040.0	3070.0	2.78	3.29	3.73	3070.0	3.34	2.75	2.92	1150.0	1.14	1.40	1.63
3100.0	3130.0	2.86	3.49	3.97	3130.0	3.62	2.77	2.86	1210.0	1.14	1.44	1.66
3180.0	3210.0	3.16	3.82	4.33	3210.0	3.96	2.85	2.82	1250.0	1.18	1.48	1.71
3240.0	3270.0	3.36	3.81	4.18	3270.0	4.02	2.97	2.94	1310.0	1.23	1.52	1.72
3320.0	3350.0	3.79	3.95	4.15	3350.0	4.39	3.19	3.08	1350.0	1.26	1.57	1.77
3380.0	3410.0	4.73	4.88	4.98	3410.0	5.03	3.40	3.12	1410.0	1.26	1.59	1.79
3460.0	3490.0	5.30	5.74	6.03	3490.0	5.41	3.59	3.21	1450.0	1.29	1.63	1.84
3520.0	3550.0	5.00	5.20	5.41	3550.0	5.36	3.68	3.34	1510.0	1.40	1.75	1.96
3600.0	3630.0	5.65	5.74	5.95	3630.0	6.15	3.95	3.44	1550.0	1.52	1.89	2.11
3660.0	3690.0	7.28	7.22	7.50	3690.0	7.31	4.31	3.54	1610.0	1.74	2.14	2.36
3740.0	3770.0	7.56	7.17	7.41	3770.0	8.20	4.69	3.74	1650.0	2.02	2.46	2.71
3800.0	3830.0	7.17	6.91	6.91	3830.0	8.35	4.75	3.76	1710.0	2.72	3.27	3.58

Harmonics Tables

RF HARMONICS ORDER

	(-dBm)	(dBc)										
0	-	-	8	3	9	13	17	25	29	41	---	---
1	-	8	+0	30	16	37	29	36	34	44	47	---
2	>90	50	64	49	66	54	58	51	60	56	66	66
3	>90	>68	>68	>68	67	>68	>68	>68	68	>68	>68	>68
4	>90	>68	>68	>68	>68	>68	>68	>68	>68	>68	>68	>68
5	>90	>68	>68	>68	>68	>68	>68	>68	>68	>68	>68	>68
6	>90	>68	>68	>68	>68	>68	>68	>68	>68	>68	>68	>68
7	>90	>68	>68	>68	>68	>68	>68	>68	>68	>68	>68	>68
8	>90	>68	>68	>68	>68	>68	>68	>68	>68	>68	>68	>68
9	---	---	>68	>68	>68	>68	>68	>68	>68	>68	>68	>68
10	---	---	---	>68	>68	>68	>68	>68	>68	>68	>68	>68
	RF CAL	0	1	2	3	4	5	6	7	8	9	10

LO HARMONICS ORDER

Test conditions: RF IN: 2850 MHz; -14.00 dBm.
 LO IN: 2880 MHz; +7.00 dBm
 IF OUT: 30 MHz; -21.83 dBm

RF HARMONICS ORDER

	(-dBm)	(dBc)										
0	-	-	18	13	20	26	29	35	41	59	---	---
1	-	8	+0	31	16	39	30	37	36	48	52	---
2	72	39	53	40	59	44	48	43	51	50	67	63
3	>90	65	53	60	46	59	50	63	50	62	56	63
4	>90	66	>78	76	>78	64	71	71	>78	63	70	63
5	>90	>78	77	>78	>78	>78	>78	>78	>78	>78	70	>78
6	>90	>78	>78	>78	>78	>78	>78	>78	>78	>78	>78	>78
7	>90	>78	>78	>78	>78	>78	>78	>78	>78	>78	>78	>78
8	>90	>78	>78	>78	>78	>78	>78	>78	>78	>78	>78	>78
9	---	---	>78	>78	>78	>78	>78	>78	>78	>78	>78	>78
10	---	---	---	>78	>78	>78	>78	>78	>78	>78	>78	>78
	RF CAL	0	1	2	3	4	5	6	7	8	9	10

LO HARMONICS ORDER

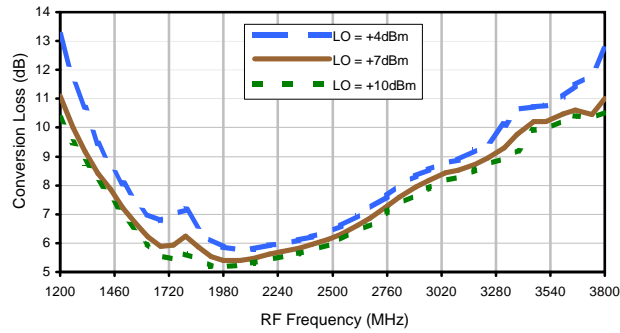
Test conditions: RF IN: 2850 MHz; -4.00 dBm.
 LO IN: 2880 MHz; +7.00 dBm
 IF OUT: 30 MHz; -11.84 dBm

- Notes: 1. All Harmonics are in (dBc) relative to IF OUTPUT.
 2. + entry denotes harmonics are in (dBc) above IF OUTPUT.
 3. RF Cal represent the Harmonics level of the RF input signal to the mixer.

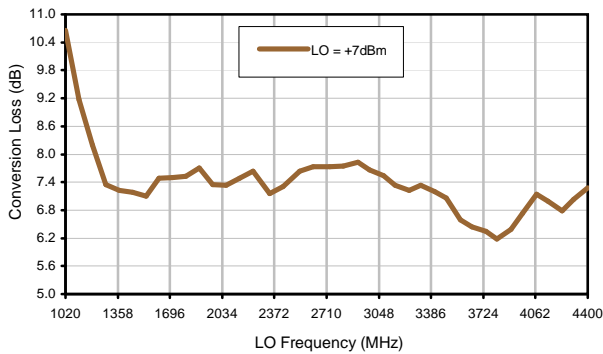


Typical Performance Curves

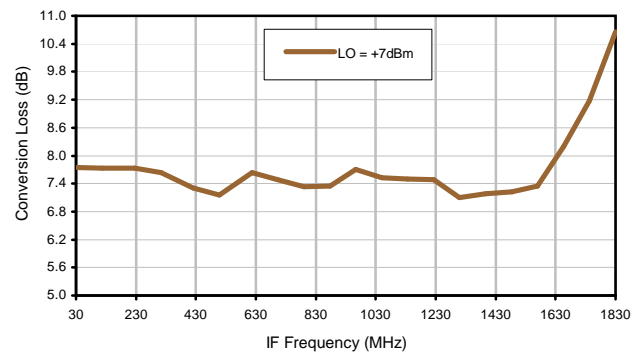
Conversion Loss @ IF=30 MHz



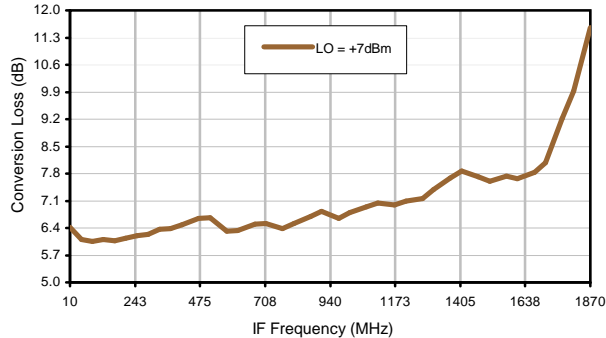
Conversion Loss vs. LO @ RF=2850MHz



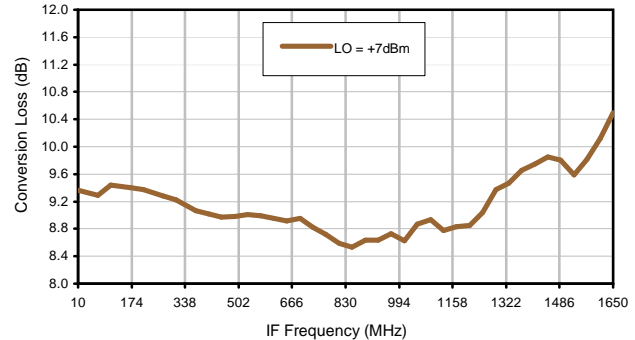
Conversion Loss vs. IF @ RF=2850MHz



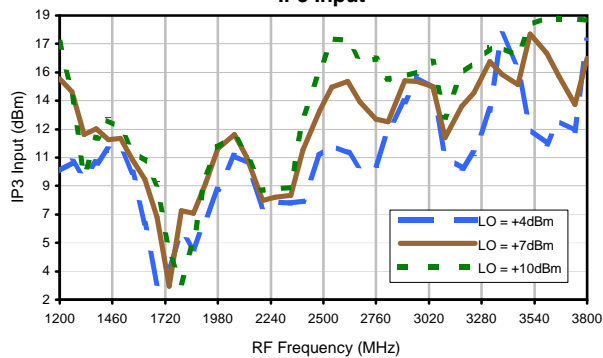
Conversion Loss vs. IF @ RF=2489.89MHz



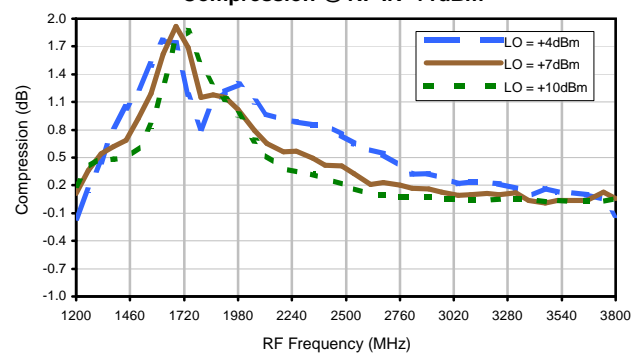
Conversion Loss vs. IF @ RF=3210.10MHz



IP3 Input

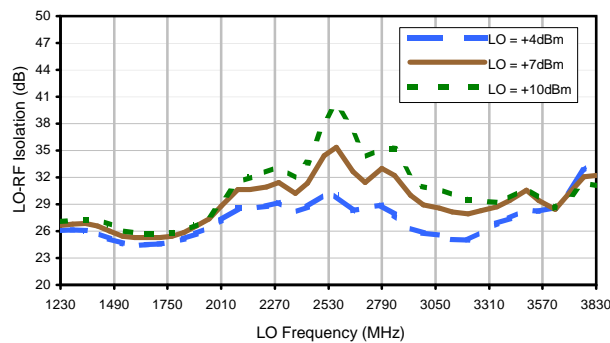


Compression @ RF IN=+1dBm

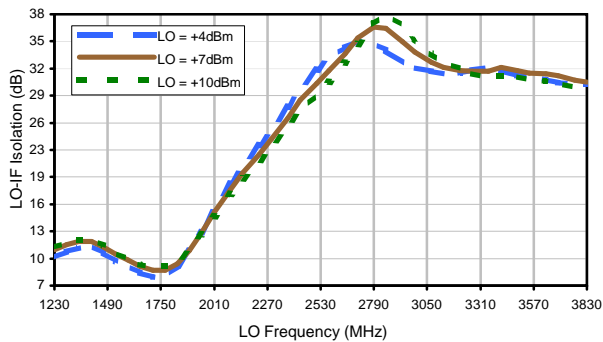


Typical Performance Curves

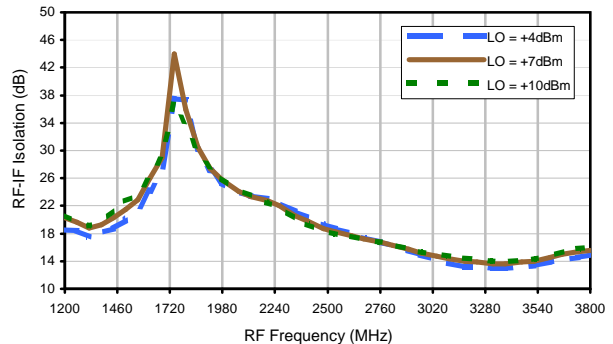
LO-RF Isolation



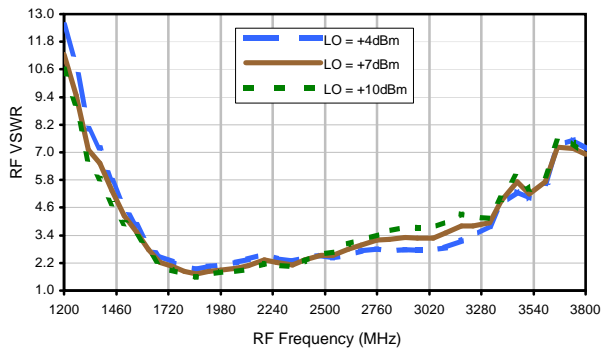
LO-IF Isolation



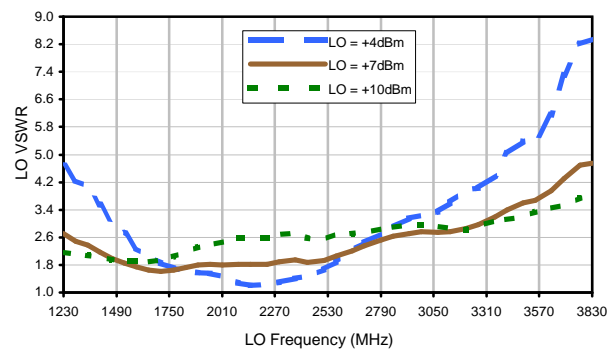
RF-IF Isolation



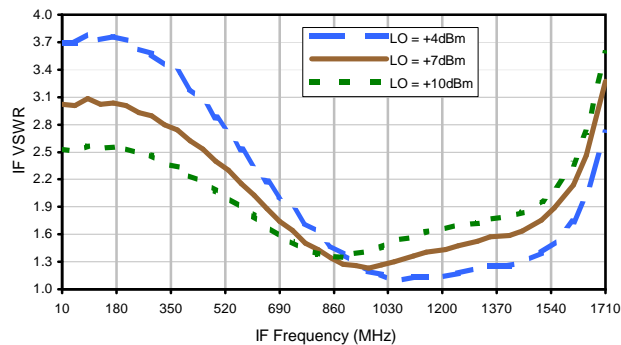
RF VSWR



LO VSWR



IF VSWR



Harmonics Tables

RF HARMONICS ORDER

	(-dBm)	(-dBc)										
0	-	-	8	3	9	13	17	25	29	41	---	---
1	-	8	+0	30	16	37	29	36	34	44	47	---
2	>90	50	64	49	66	54	58	51	60	56	66	66
3	>90	>68	>68	>68	67	>68	>68	>68	68	>68	>68	>68
4	>90	>68	>68	>68	>68	>68	>68	>68	>68	>68	>68	>68
5	>90	>68	>68	>68	>68	>68	>68	>68	>68	>68	>68	>68
6	>90	>68	>68	>68	>68	>68	>68	>68	>68	>68	>68	>68
7	>90	>68	>68	>68	>68	>68	>68	>68	>68	>68	>68	>68
8	>90	>68	>68	>68	>68	>68	>68	>68	>68	>68	>68	>68
9	---	---	>68	>68	>68	>68	>68	>68	>68	>68	>68	>68
10	---	---	---	>68	>68	>68	>68	>68	>68	>68	>68	>68
	RF CAL	0	1	2	3	4	5	6	7	8	9	10

LO HARMONICS ORDER

Test conditions: RF IN: 2850 MHz; -14.00 dBm.
 LO IN: 2880 MHz; +7.00 dBm
 IF OUT: 30 MHz; -21.83 dBm

RF HARMONICS ORDER

	(-dBm)	(-dBc)										
0	-	-	18	13	20	26	29	35	41	59	---	---
1	-	8	+0	31	16	39	30	37	36	48	52	---
2	72	39	53	40	59	44	48	43	51	50	67	63
3	>90	65	53	60	46	59	50	63	50	62	56	63
4	>90	66	>78	76	>78	64	71	71	>78	63	70	63
5	>90	>78	77	>78	>78	>78	>78	>78	>78	>78	70	>78
6	>90	>78	>78	>78	>78	>78	>78	>78	>78	>78	>78	>78
7	>90	>78	>78	>78	>78	>78	>78	>78	>78	>78	>78	>78
8	>90	>78	>78	>78	>78	>78	>78	>78	>78	>78	>78	>78
9	---	---	>78	>78	>78	>78	>78	>78	>78	>78	>78	>78
10	---	---	---	>78	>78	>78	>78	>78	>78	>78	>78	>78
	RF CAL	0	1	2	3	4	5	6	7	8	9	10

LO HARMONICS ORDER

Test conditions: RF IN: 2850 MHz; -4.00 dBm.
 LO IN: 2880 MHz; +7.00 dBm
 IF OUT: 30 MHz; -11.84 dBm

- Notes: 1. All Harmonics are in (dBc) relative to IF OUTPUT.
 2. + entry denotes harmonics are in (dBc) above IF OUTPUT.
 3. RF Cal represent the Harmonics level of the RF input signal to the mixer.

REV. X3
 ADE-32
 101013
 Page 3 of 3



IF/RF MICROWAVE COMPONENTS • ISO 9001 ISO 14001 AS 9100 CERTIFIED RoHS compliant
 P.O. Box 350166, Brooklyn, New York 11235-0003 (718) 934-4500 Fax (718) 332-4661



The Design Engineers Search Engine finds the model you need, Instantly • For detailed performance specs & shopping online see



Case Style

CD

CD541
CD542
CD636
CD637

Outline Dimensions



PCB Land Pattern



Suggested Layout,
Tolerance to be within $\pm .002$

CASE#	A	B	C	D	E	F	G	H	J	K	L	WT, GRAM
CD541					.082 (2.08)							.15
CD542	.272 (6.91)	.310 (7.87)	.220 (5.58)	.100 (2.54)	.112 (2.84)	.055 (1.40)	.100 (2.54)	.030 (0.76)	.026 (0.66)	.065 (1.65)	.300 (7.62)	.20
CD636					.162 (4.11)							.25
CD637					.206 (5.23)							.40

Dimensions are in inches (mm). Tolerances: 2 Pl. $\pm .01$; 3 Pl. $\pm .005$

Notes:

- Case material: Plastic.
- Termination finish:
 - For RoHS Case Styles: Tin plate over Nickel plate. All models, (+) suffix.
 - For RoHS-5 Case Styles: Tin-Lead plate. All models, no (+) suffix.

Mini-Circuits®

INTERNET <http://www.minicircuits.com>

P.O. Box 350166, Brooklyn, New York 11235-0003 (718) 934-4500 Fax (718) 332-4661

Distribution Centers NORTH AMERICA 800-654-7949 • 417-335-5935 • Fax 417-335-5945 • EUROPE 44-1252-832600 • Fax 44-1252-837010

Mini-Circuits ISO 9001 & ISO 14001 Certified

Tape & Reel Packaging TR-F34



Tape Width, mm	Device Cavity Pitch, mm	Reel Size, inches	Devices per Reel see note	
16	12	7	Small quantity standard (see note)	20
				50
				100
				200
		13	Standard	500
				1000

Note: Availability of small reel quantity varies by model.
Refer to pricing and availability on individual model dashboard.

Mini-Circuits carrier tape materials provide protection from ESD (Electro-Static Discharge) during handling and transportation. Tapes are static dissipative and comply with industry standards EIA-481/EIA-541.

Go to: www.minicircuits.com/pages/pdfs/tape.pdf



INTERNET <http://www.minicircuits.com>

P.O. Box 350166, Brooklyn, New York 11235-0003 (718) 934-4500 Fax (718) 332-4661

Distribution Centers NORTH AMERICA 800-654-7949 • 417-335-5935 • Fax 417-335-5945 • EUROPE 44-1252-832600 • Fax 44-1252-837010

Mini-Circuits ISO 9001 & ISO 14001 Certified

THIRD ANGLE PROJECTION



REVISIONS

REV	ECN No.	DESCRIPTION	DATE	DR	AUTH
A	M101143	ADDED "gk" PIN CONNECTION, TT100 CASE STYLE & NOTE 2	10/10/05	MMG	DJ
B	M102713	ADDED "...WITH SMOBC"	01/17/06	MMG	IL
C	M108637	REMOVED "PIN 1", ADDED INDEX ON UNIT	12/01/06	MYG	FL

**SUGGESTED MOUNTING CONFIGURATION
FOR BH292, CD541/542/636/637, TT100/240 CASE
STYLES, "gk", "ht", "hu", "nd", "w" PIN CONNECTIONS**



- NOTES:** 1. TRACE WIDTH IS SHOWN FOR ROGERS R04350B WITH DIELECTRIC THICKNESS .030" ± .002"; COPPER: 1/2 OZ. EACH SIDE. FOR OTHER MATERIALS TRACE WIDTH MAY NEED TO BE MODIFIED.
2. BOTTOM SIDE OF THE PCB IS CONTINUOUS GROUND PLANE.

- DENOTES PCB COPPER LAYOUT WITH SMOBC (SOLDER MASK OVER BARE COPPER)
- DENOTES COPPER LAND PATTERN FREE OF SOLDER MASK

UNLESS OTHERWISE SPECIFIED	INITIALS		DATE
	DRAWN	MMG	07/17/02
	CHECKED	WL	08/02/02
	APPROVED	DJ	08/05/02

DIMENSIONS ARE IN INCHES
TOLERANCES ON:
2 PL DECIMALS ±
3 PL DECIMALS ± .005
ANGLES ±
FRACTIONS ±

Mini-Circuits®

THIS DOCUMENT AND ITS CONTENTS ARE THE PROPERTY OF MINI-CIRCUITS. EXCEPT FOR USE EXPRESSLY GRANTED, IN WRITING, TO ITS VENDORS, VENDEE AND THE UNITED STATES GOVERNMENT, MINI-CIRCUITS RESERVES ALL PROPRIETARY DESIGN, USE, MANUFACTURING AND REPRODUCTION RIGHTS THERETO. THESE CONTENTS SHALL NOT BE USED, DUPLICATED OR DISCLOSED TO ANY OUTSIDE PARTY, IN WHOLE OR IN PART, WITHOUT WRITTEN PERMISSION OF MINI-CIRCUITS.

ASHEETA1.DWG REV:A DATE:01/12/95

Mini-Circuits® 13 Neptune Avenue
Brooklyn NY 11235

PL, gk/ht/hu/nd/w, BH292,
CD541/542/636/637, TT100/240, TB-03

SIZE A	CODE IDENT 15542	DRAWING NO: 98-PL-052	REV: C
FILE: 98PL052	SCALE: 8:1	SHEET: 1 OF 1	

THIRD ANGLE PROJECTION



REVISIONS

REV	ECN No.	DESCRIPTION	DATE	DR	AUTH
E	M119737	UPDATED PCB	10.08	MF	AD
F	M127659	UPDATED CARR	06.10	SW	SG
G	M127846	UPDATED SCHEMATIC DIAGRAM	06.10	SW	SG
H	M131840	UPDATED DWG	05.11	MF	AD



NOTES:

1. REFER TO -09 PAGE FOR ITEM DESCRIPTIONS.
DESIGNATION NUMBERS ON -20 PAGE CORRESPOND TO THE NUMBERS ON -09 PAGE.
2. FOR TEXT HEIGHT & STYLE ON THE LABEL REFER TO: D3-G209.

UNLESS OTHERWISE SPECIFIED	INITIALS	DATE
DIMENSIONS ARE IN INCHES TOLERANCES ON: 2 PL DECIMALS ± 3 PL DECIMALS ± ANGLES ± FRACTIONS ±	DRAWN	S.WOLYNSKI 06.29.99
	CHECKED	SG 07.06.99
	APPROVED	MG 07.10.99

 **Mini-Circuits®** 13 Neptune Avenue
Brooklyn NY 11235

TB,ADE,CD542/636,06MX01,50

 Mini-Circuits®
THIS DOCUMENT AND ITS CONTENTS ARE THE PROPERTY OF MINI-CIRCUITS. EXCEPT FOR USE EXPRESSLY GRANTED, IN WRITING, TO ITS VENDORS, VENDEE AND THE UNITED STATES GOVERNMENT, MINI-CIRCUITS RESERVES ALL PROPRIETARY DESIGN, USE, MANUFACTURING AND REPRODUCTION RIGHTS THERETO. THESE CONTENTS SHALL NOT BE USED, DUPLICATED OR DISCLOSED TO ANY OUTSIDE PARTY, IN WHOLE OR IN PART, WITHOUT WRITTEN PERMISSION OF MINI-CIRCUITS.

SIZE A	CODE IDENT 15542	DRAWING NO: TB-03-20	REV: H
FILE: WTB-03	SCALE: 1.5:1	SHEET: 1 OF 2	

Evaluation Board and Circuit

For Pin Connections and DUT Orientation Refer to
Data Sheet of the DUT



TB-03



Schematic Diagram

Notes:

1. 50 Ohm SMA Female connectors.
2. PCB Material: Rogers R04350 or equivalent,
Dielectric Constant=3.5, Thickness=.030 inch.

 **Mini-Circuits®**