

Surface Mount High Reliability Mixer

ADE-R20+

Level 7 (LO Power +7 dBm) 1500 to 2800 MHz



CASE STYLE: CD542

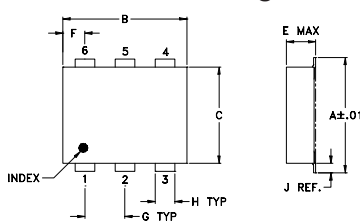
Maximum Ratings

Operating Temperature	-40°C to 85°C
Storage Temperature	-55°C to 100°C
RF Power	50mW
IF Current	40mA
Permanent damage may occur if any of these limits are exceeded.	

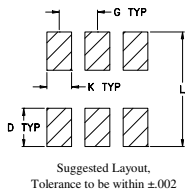
Pin Connections

LO	6
RF	4
IF	3
GROUND	1,2,5

Outline Drawing



PCB Land Pattern

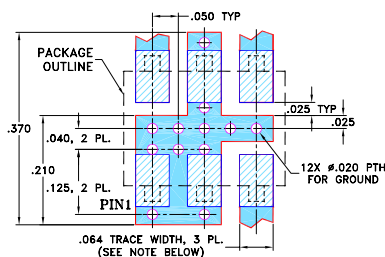


Suggested Layout,
Tolerance to be within ±.002

Outline Dimensions (inch)

A	B	C	D	E	F	G
.272	.310	.220	.100	.112	.055	.100
6.91	7.87	5.59	2.54	2.84	1.40	2.54
H	J	K	L	wt		
.030	.026	.065	.300	grams		
0.76	0.66	1.65	7.62	0.20		

Demo Board MCL P/N: TB-02 Suggested PCB Layout (PL-051)



- NOTES: 1. TRACE WIDTH IS SHOWN FOR ROGERS RO4350B WITH DIELECTRIC THICKNESS .030" ± .002"; COPPER: 1/2 OZ. EACH SIDE. FOR OTHER MATERIALS TRACE WIDTH MAY NEED TO BE MODIFIED.
2. BOTTOM SIDE OF THE PCB IS CONTINUOUS GROUND PLANE.
- DENOTES PCB COPPER LAYOUT WITH SMOBC (SOLDER MASK OVER BARE COPPER)
 - DENOTES COPPER LAND PATTERN FREE OF SOLDER MASK

Features

- hermetically sealed ceramic quad
- low conversion loss, 5.8 dB typ.
- excellent L-R isolation, 30 dB typ.
- low profile package
- aqueous washable
- protected by US Patent 6,133,525

Applications

- digital cellular
- digital cordless phone
- PCN

Electrical Specifications

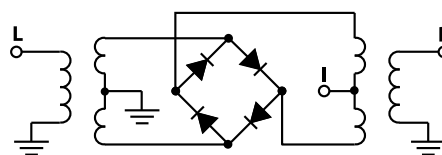
FREQUENCY (MHz)	CONVERSION LOSS (dB)	LO-RF ISOLATION (dB)		LO-IF ISOLATION (dB)		IP3 at center band (dBm)			
		Typ.	Min.	Typ.	Min.				
1500-2800	DC-500	5.8	0.10	8.0	30	22	28	15	12

1 dB COMP.: +1 dBm typ.

Typical Performance Data

Frequency (MHz)	Conversion Loss (dB)	Isolation L-R (dB)	Isolation L-I (dB)	VSWR RF Port (:1)	VSWR LO Port (:1)
1460.00	1490.00	6.21	37.65	1.34	1.81
1560.00	1590.00	5.95	37.70	1.28	1.80
1660.00	1690.00	5.94	36.06	1.50	1.79
1740.00	1770.00	5.91	35.29	1.66	1.79
1840.00	1870.00	5.80	33.78	1.75	1.83
1920.00	1950.00	5.79	32.65	1.83	1.86
2020.00	2050.00	5.79	31.63	1.90	1.92
2100.00	2130.00	5.81	30.85	1.92	1.95
2200.00	2230.00	5.78	30.15	1.90	2.00
2280.00	2310.00	5.80	29.99	1.84	2.08
2380.00	2410.00	5.74	30.06	1.74	2.17
2460.00	2490.00	5.72	30.05	1.70	2.16
2560.00	2590.00	5.75	29.85	1.70	2.28
2640.00	2670.00	5.90	30.06	1.73	2.36
2740.00	2770.00	6.08	30.64	1.77	2.41
2820.00	2850.00	6.35	31.39	1.91	2.42

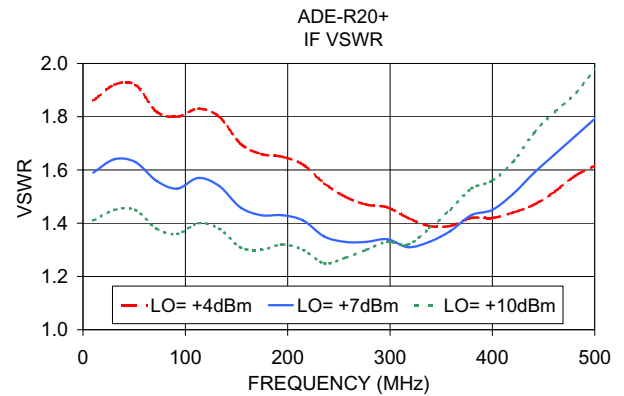
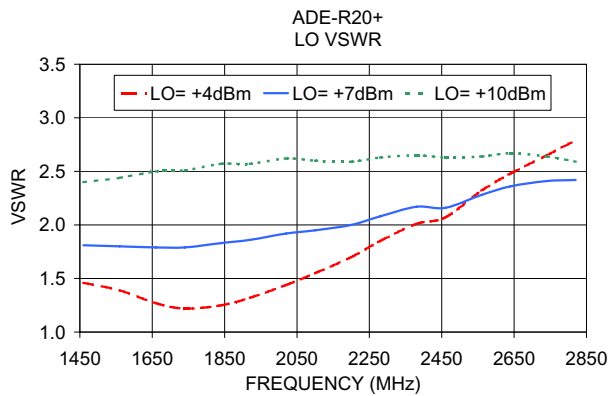
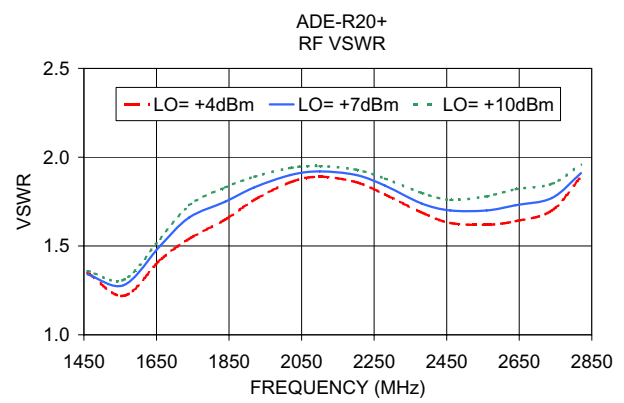
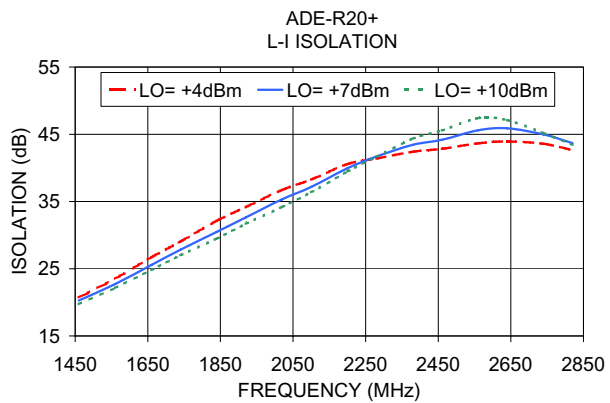
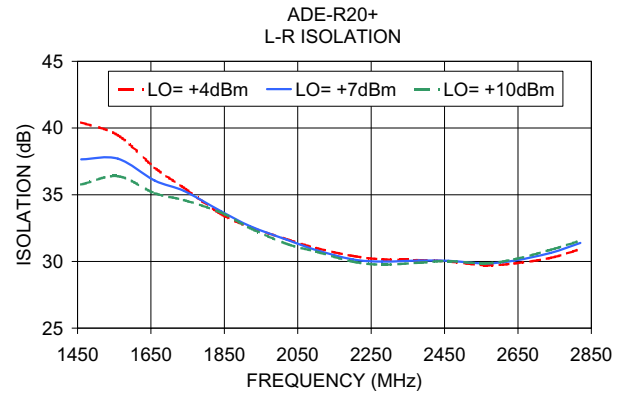
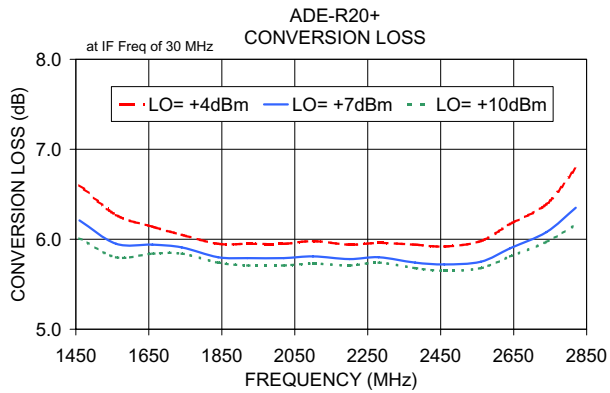
Electrical Schematic



Notes

- A. Performance and quality attributes and conditions not expressly stated in this specification document are intended to be excluded and do not form a part of this specification document.
B. Electrical specifications and performance data contained in this specification document are based on Mini-Circuit's applicable established test performance criteria and measurement instructions.
C. The parts covered by this specification document are subject to Mini-Circuits standard limited warranty and terms and conditions (collectively, "Standard Terms"); Purchasers of this part are entitled to the rights and benefits contained therein. For a full statement of the Standard Terms and the exclusive rights and remedies thereunder, please visit Mini-Circuits' website at www.minicircuits.com/MCLStore/terms.jsp





Notes

- A. Performance and quality attributes and conditions not expressly stated in this specification document are intended to be excluded and do not form a part of this specification document.
- B. Electrical specifications and performance data contained in this specification document are based on Mini-Circuit's applicable established test performance criteria and measurement instructions.
- C. The parts covered by this specification document are subject to Mini-Circuits standard limited warranty and terms and conditions (collectively, "Standard Terms"); Purchasers of this part are entitled to the rights and benefits contained therein. For a full statement of the Standard Terms and the exclusive rights and remedies thereunder, please visit Mini-Circuits' website at www.minicircuits.com/MCLStore/terms.jsp

Frequency Mixer

ADE-R20+

Typical Performance Data

RF (IN) (MHz)	LO (MHz)	CONVERSION LOSS IF FIXED @IF(OUT)=30MHz (dB)			RF (IN) (MHz)	LO (MHz)	IP3 INPUT (dBm)			RF (IN) (MHz)	LO (MHz)	COMPRESSION @RF IN=+1dBm (dB)		
		@LO (dBm)					@LO (dBm)					@LO (dBm)		
		+4	+7	+10			+4	+7	+10			+4	+7	+10
760.0	790.0	11.44	10.70	10.30	760.0	790.0	8.63	11.87	12.93	760.0	790.0	0.16	0.17	0.19
860.0	890.0	10.34	9.71	9.37	860.0	890.0	7.63	11.15	13.35	860.0	890.0	0.57	0.48	0.40
960.0	990.0	9.17	8.67	8.49	960.0	990.0	7.39	9.59	10.70	960.0	990.0	1.14	0.95	0.78
1060.0	1090.0	8.27	7.81	7.65	1060.0	1090.0	6.33	7.96	8.77	1060.0	1090.0	1.46	1.25	1.03
1160.0	1190.0	7.76	7.35	7.17	1160.0	1190.0	4.50	5.97	7.18	1160.0	1190.0	1.72	1.48	1.23
1260.0	1290.0	7.24	6.91	6.74	1260.0	1290.0	2.99	4.70	6.74	1260.0	1290.0	1.98	1.67	1.39
1360.0	1390.0	6.97	6.62	6.43	1360.0	1390.0	1.92	4.17	6.72	1360.0	1390.0	1.99	1.65	1.37
1460.0	1490.0	6.60	6.21	6.01	1460.0	1490.0	2.86	5.32	7.42	1460.0	1490.0	2.00	1.66	1.38
1560.0	1590.0	6.27	5.95	5.80	1560.0	1590.0	6.38	8.40	9.72	1560.0	1590.0	1.99	1.61	1.33
1660.0	1690.0	6.14	5.94	5.84	1660.0	1690.0	8.35	9.84	10.89	1660.0	1690.0	1.90	1.52	1.27
1740.0	1770.0	6.05	5.91	5.84	1740.0	1770.0	8.66	9.64	10.62	1740.0	1770.0	1.63	1.32	1.11
1840.0	1870.0	5.95	5.80	5.74	1840.0	1870.0	9.51	10.23	11.03	1840.0	1870.0	1.37	1.09	0.89
1920.0	1950.0	5.95	5.79	5.71	1920.0	1950.0	9.75	10.72	11.52	1920.0	1950.0	1.32	1.04	0.86
2020.0	2050.0	5.95	5.79	5.71	2020.0	2050.0	9.80	10.88	11.89	2020.0	2050.0	1.27	0.99	0.79
2100.0	2130.0	5.98	5.81	5.73	2100.0	2130.0	10.06	11.50	12.38	2100.0	2130.0	1.15	0.88	0.71
2200.0	2230.0	5.94	5.78	5.71	2200.0	2230.0	9.43	11.61	12.81	2200.0	2230.0	1.18	0.89	0.69
2280.0	2310.0	5.96	5.80	5.74	2280.0	2310.0	9.34	11.71	13.31	2280.0	2310.0	1.06	0.78	0.61
2380.0	2410.0	5.94	5.74	5.68	2380.0	2410.0	9.54	10.82	12.52	2380.0	2410.0	1.11	0.77	0.60
2460.0	2490.0	5.92	5.72	5.65	2460.0	2490.0	10.15	11.83	13.32	2460.0	2490.0	1.01	0.70	0.53
2560.0	2590.0	5.98	5.75	5.68	2560.0	2590.0	9.68	11.49	13.26	2560.0	2590.0	1.00	0.67	0.50
2640.0	2670.0	6.17	5.90	5.81	2640.0	2670.0	11.01	11.68	13.48	2640.0	2670.0	1.06	0.68	0.48
2740.0	2770.0	6.39	6.08	5.97	2740.0	2770.0	14.70	12.68	13.00	2740.0	2770.0	1.17	0.77	0.53
2820.0	2850.0	6.79	6.35	6.16	2820.0	2850.0	15.50	12.90	12.99	2820.0	2850.0	1.25	0.87	0.61
2920.0	2950.0	7.15	6.71	6.48	2920.0	2950.0	12.37	11.81	12.87	2920.0	2950.0	1.22	0.90	0.68
3000.0	3030.0	7.66	7.23	7.01	3000.0	3030.0	12.39	11.70	13.01	3000.0	3030.0	0.92	0.67	0.52
3100.0	3130.0	8.01	7.60	7.44	3100.0	3130.0	13.86	18.58	11.49	3100.0	3130.0	0.65	0.44	0.37
3180.0	3210.0	8.51	8.02	7.85	3180.0	3210.0	16.05	13.90	14.34	3180.0	3210.0	0.46	0.32	0.27
3280.0	3310.0	8.98	8.41	8.18	3280.0	3310.0	15.03	15.16	14.96	3280.0	3310.0	0.34	0.25	0.22
3360.0	3390.0	9.40	8.83	8.61	3360.0	3390.0	14.20	15.27	14.95	3360.0	3390.0	0.24	0.20	0.18
3460.0	3490.0	9.69	9.11	8.88	3460.0	3490.0	14.15	15.24	15.61	3460.0	3490.0	0.20	0.18	0.16
3540.0	3570.0	9.83	9.33	9.13	3540.0	3570.0	14.18	15.34	15.50	3540.0	3570.0	0.16	0.16	0.15
3640.0	3670.0	10.04	9.55	9.37	3640.0	3670.0	14.32	15.66	15.86	3640.0	3670.0	0.16	0.16	0.14
3720.0	3750.0	10.14	9.70	9.56	3720.0	3750.0	14.29	15.44	16.02	3720.0	3750.0	0.15	0.15	0.14
3820.0	3850.0	10.47	9.99	9.90	3820.0	3850.0	16.45	15.51	15.89	3820.0	3850.0	0.14	0.14	0.14
3900.0	3930.0	10.60	10.12	10.07	3900.0	3930.0	18.70	16.42	15.85	3900.0	3930.0	0.17	0.14	0.14
4000.0	4030.0	10.89	10.32	10.31	4000.0	4030.0	15.73	18.00	15.74	4000.0	4030.0	0.20	0.14	0.14
4080.0	4110.0	11.05	10.24	10.22	4080.0	4110.0	14.57	18.81	16.33	4080.0	4110.0	0.19	0.15	0.15
4180.0	4210.0	11.40	10.40	10.33	4180.0	4210.0	15.24	17.04	18.12	4180.0	4210.0	0.14	0.16	0.15
4260.0	4290.0	11.72	10.44	10.33	4260.0	4290.0	15.88	16.24	18.83	4260.0	4290.0	0.09	0.19	0.17
4360.0	4390.0	11.82	10.57	10.43	4360.0	4390.0	16.48	16.51	17.85	4360.0	4390.0	0.08	0.18	0.18



Typical Performance Data

IF (OUT) (MHz)	LO (MHz)	CONVERSION LOSS VS. IF FREQUENCY @RF(IN)=2250MHz (dB)	IF (OUT) (MHz)	LO (MHz)	CONVERSION LOSS VS. IF FREQUENCY @RF(IN)=1489.9MHz (dB)	IF (OUT) (MHz)	LO (MHz)	CONVERSION LOSS VS. IF FREQUENCY @RF(IN)=3010.1001MHz (dB)
		@LO (dBm)			@LO (dBm)			@LO (dBm)
		+7			+7			+7
1090.0	1160.0	10.61	10.1	1500.0	6.55	850.1	2160.0	10.40
1028.9	1221.1	10.00	30.5	1520.4	6.16	829.6	2180.5	10.07
967.7	1282.3	9.75	50.9	1540.8	6.15	809.1	2201.0	9.69
906.6	1343.4	9.50	71.3	1561.2	6.13	788.6	2221.5	9.42
845.5	1404.5	9.37	91.7	1581.6	6.08	768.1	2242.0	9.06
784.3	1465.7	9.05	112.1	1602.0	6.03	747.7	2262.4	8.82
723.2	1526.8	8.81	132.5	1622.4	6.01	727.2	2282.9	8.60
662.1	1587.9	8.35	153.0	1642.9	6.01	706.7	2303.4	8.44
600.9	1649.1	7.82	173.4	1663.3	6.00	686.2	2323.9	8.27
539.8	1710.2	7.33	193.8	1683.7	6.03	665.7	2344.4	8.10
478.7	1771.3	6.71	214.2	1704.1	6.08	645.2	2364.9	8.04
417.5	1832.5	6.24	234.6	1724.5	6.11	624.7	2385.4	7.97
356.4	1893.6	6.06	255.0	1744.9	6.19	604.2	2405.9	7.91
295.3	1954.7	6.12	275.4	1765.3	6.23	583.8	2426.3	7.85
234.2	2015.8	6.13	295.8	1785.7	6.26	563.3	2446.8	7.81
173.0	2077.0	6.12	316.2	1806.1	6.32	542.8	2467.3	7.77
111.9	2138.1	6.09	336.6	1826.5	6.37	522.3	2487.8	7.71
50.8	2199.2	5.97	357.0	1846.9	6.40	501.8	2508.3	7.75
10.0	2260.0	6.32	377.4	1867.3	6.38	481.3	2528.8	7.65
68.9	2318.9	5.99	397.9	1887.8	6.49	460.8	2549.3	7.64
108.1	2358.1	6.06	438.7	1928.6	6.48	440.3	2569.8	7.50
167.0	2417.0	6.20	459.1	1949.0	6.60	419.9	2590.2	7.57
206.2	2456.2	6.24	499.9	1989.8	6.71	399.4	2610.7	7.53
265.1	2515.1	6.31	520.3	2010.2	6.71	378.9	2631.2	7.50
304.3	2554.3	6.39	561.1	2051.0	6.76	358.4	2651.7	7.44
363.2	2613.2	6.42	581.5	2071.4	6.95	337.9	2672.2	7.45
402.5	2652.5	6.50	622.3	2112.2	7.07	317.4	2692.7	7.40
461.3	2711.3	6.58	642.8	2132.7	7.01	296.9	2713.2	7.38
500.6	2750.6	6.72	683.6	2173.5	7.22	276.4	2733.7	7.35
559.4	2809.4	6.87	704.0	2193.9	7.43	256.0	2754.1	7.31
598.7	2848.7	7.09	744.8	2234.7	7.69	235.5	2774.6	7.29
657.5	2907.5	7.49	765.2	2255.1	7.86	215.0	2795.1	7.28
696.8	2946.8	7.78	806.0	2295.9	8.28	194.5	2815.6	7.31
755.7	3005.7	8.14	826.4	2316.3	8.46	174.0	2836.1	7.26
794.9	3044.9	8.53	867.2	2357.1	8.84	153.5	2856.6	7.30
853.8	3103.8	8.94	887.7	2377.6	9.19	133.0	2877.1	7.26
893.0	3143.0	9.33	928.5	2418.4	9.47	92.1	2918.0	7.29
951.9	3201.9	9.63	948.9	2438.8	9.67	71.6	2938.5	7.30
991.1	3241.1	10.09	989.7	2479.6	10.26	30.6	2979.5	7.26
1050.0	3300.0	10.55	1010.1	2500.0	10.42	10.1	3000.0	7.59

Frequency Mixer

ADE-R20+

Typical Performance Data

LO (MHz)	LO-RF ISOLATION (dB)			LO-IF ISOLATION (dB)		
	@LO (dBm)			@LO (dBm)		
	+4	+7	+10	+4	+7	+10
790.0	24.35	24.86	24.91	14.46	15.26	15.70
890.0	24.64	24.98	24.89	14.54	15.21	15.53
990.0	25.46	25.75	25.54	14.91	15.41	15.57
1090.0	26.59	26.72	26.37	15.50	15.82	15.73
1190.0	28.52	28.26	27.84	16.38	16.49	16.28
1290.0	31.72	30.85	29.86	17.42	17.42	17.02
1390.0	36.63	34.49	33.08	18.80	18.48	18.12
1490.0	40.42	37.65	35.77	20.73	20.28	19.74
1590.0	39.46	37.70	36.39	23.53	22.72	22.14
1690.0	37.03	36.06	35.12	26.71	25.56	24.81
1770.0	35.52	35.29	34.60	29.05	27.83	27.01
1870.0	33.57	33.78	33.68	32.13	30.47	29.49
1950.0	32.58	32.65	32.50	34.19	32.64	31.70
2050.0	31.67	31.63	31.32	36.73	35.32	34.20
2130.0	31.01	30.85	30.73	38.27	37.17	36.40
2230.0	30.42	30.15	29.99	40.56	39.95	39.46
2310.0	30.16	29.99	29.76	41.40	41.69	41.68
2410.0	30.10	30.06	29.90	42.41	43.43	44.36
2490.0	30.00	30.05	30.03	42.85	44.18	45.57
2590.0	29.72	29.85	29.86	43.65	45.60	47.40
2670.0	29.85	30.06	30.17	43.94	45.88	47.11
2770.0	30.27	30.64	30.88	43.60	44.97	45.19
2850.0	30.93	31.39	31.56	42.66	43.67	43.43
2950.0	31.48	32.37	32.74	42.11	42.71	41.91
3030.0	31.85	32.95	33.76	41.34	42.08	41.31
3130.0	33.22	33.98	34.80	40.38	41.05	40.35
3210.0	34.66	35.34	35.98	39.45	40.12	39.24
3310.0	36.41	37.22	38.06	38.59	39.12	38.23
3390.0	38.12	38.92	39.73	38.00	38.42	37.30
3490.0	40.48	41.31	42.31	37.27	37.54	36.37
3570.0	42.49	43.45	44.58	36.67	36.68	35.36
3670.0	45.22	46.21	47.56	36.03	35.91	34.46
3750.0	46.58	47.27	48.67	35.64	35.01	33.72
3850.0	47.19	47.23	48.12	35.19	34.53	32.94
3930.0	46.65	46.20	46.78	34.94	34.07	32.30
4030.0	43.90	43.73	44.63	34.44	33.30	31.40
4110.0	41.69	41.32	42.51	34.04	32.77	30.76
4210.0	38.78	37.98	38.70	33.57	32.06	29.95
4290.0	37.46	36.21	36.62	33.25	31.59	29.45
4390.0	35.61	34.81	34.91	32.72	31.05	28.57

RF (IN) (MHz)	LO (MHz)	RF-IF ISOLATION (dB)		
		@LO (dBm)		
		+4	+7	+10
760.0	790.0	16.27	17.08	17.60
860.0	890.0	14.24	14.60	15.00
960.0	990.0	12.66	12.98	13.15
1060.0	1090.0	11.11	11.21	11.38
1160.0	1190.0	10.04	10.04	10.14
1260.0	1290.0	9.49	9.42	9.33
1360.0	1390.0	9.75	9.61	9.41
1460.0	1490.0	10.23	9.95	9.79
1560.0	1590.0	10.28	9.98	9.94
1660.0	1690.0	10.37	10.16	10.05
1740.0	1770.0	10.75	10.43	10.36
1840.0	1870.0	11.26	11.05	10.87
1920.0	1950.0	11.63	11.53	11.40
2020.0	2050.0	12.06	11.99	11.93
2100.0	2130.0	12.54	12.49	12.47
2200.0	2230.0	13.08	13.12	13.07
2280.0	2310.0	13.74	13.82	13.77
2380.0	2410.0	14.63	14.80	14.92
2460.0	2490.0	15.33	15.58	15.77
2560.0	2590.0	16.27	16.68	16.96
2640.0	2670.0	17.20	17.77	18.16
2740.0	2770.0	18.22	18.86	19.28
2820.0	2850.0	18.87	19.57	19.97
2920.0	2950.0	20.32	20.94	21.42
3000.0	3030.0	22.05	22.72	23.08
3100.0	3130.0	24.05	24.65	24.99
3180.0	3210.0	25.55	25.79	25.97
3280.0	3310.0	26.56	26.42	26.27
3360.0	3390.0	26.54	26.24	25.96
3460.0	3490.0	25.84	25.51	25.27
3540.0	3570.0	25.13	24.79	24.60
3640.0	3670.0	24.34	24.07	23.89
3720.0	3750.0	23.71	23.51	23.36
3820.0	3850.0	23.21	23.01	22.90
3900.0	3930.0	22.90	22.74	22.65
4000.0	4030.0	22.57	22.47	22.38
4080.0	4110.0	22.48	22.46	22.41
4180.0	4210.0	22.30	22.33	22.29
4260.0	4290.0	22.24	22.30	22.29
4360.0	4390.0	22.07	22.21	22.23



Frequency Mixer

ADE-R20+

Typical Performance Data

RF (IN) (MHz)	LO (MHz)	RF VSWR (:1)		
		@LO (dBm)		
		+4	+7	+10
760.0	790.0	9.08	8.77	8.51
860.0	890.0	6.89	6.63	6.49
960.0	990.0	5.17	4.89	4.79
1060.0	1090.0	3.98	3.70	3.53
1160.0	1190.0	3.09	2.88	2.71
1260.0	1290.0	2.35	2.24	2.12
1360.0	1390.0	1.80	1.73	1.71
1460.0	1490.0	1.35	1.34	1.36
1560.0	1590.0	1.22	1.28	1.31
1660.0	1690.0	1.42	1.50	1.54
1740.0	1770.0	1.54	1.66	1.73
1840.0	1870.0	1.65	1.75	1.83
1920.0	1950.0	1.76	1.83	1.89
2020.0	2050.0	1.86	1.90	1.94
2100.0	2130.0	1.89	1.92	1.95
2200.0	2230.0	1.86	1.90	1.93
2280.0	2310.0	1.79	1.84	1.88
2380.0	2410.0	1.69	1.74	1.80
2460.0	2490.0	1.63	1.70	1.76
2560.0	2590.0	1.62	1.70	1.78
2640.0	2670.0	1.64	1.73	1.82
2740.0	2770.0	1.70	1.77	1.85
2820.0	2850.0	1.89	1.91	1.96
2920.0	2950.0	2.41	2.41	2.42
3000.0	3030.0	2.92	2.94	2.95
3100.0	3130.0	3.54	3.58	3.62
3180.0	3210.0	4.00	3.99	4.02
3280.0	3310.0	4.62	4.54	4.51
3360.0	3390.0	4.98	4.88	4.83
3460.0	3490.0	5.47	5.36	5.30
3540.0	3570.0	5.81	5.70	5.61
3640.0	3670.0	6.32	6.19	6.11
3720.0	3750.0	6.56	6.42	6.32
3820.0	3850.0	6.86	6.68	6.61
3900.0	3930.0	7.02	6.78	6.68
4000.0	4030.0	7.14	6.68	6.56
4080.0	4110.0	7.38	6.68	6.49
4180.0	4210.0	7.56	6.71	6.37
4260.0	4290.0	7.90	6.81	6.37
4360.0	4390.0	7.87	6.78	6.21

LO (MHz)	LO VSWR (:1)		
	@LO (dBm)		
	+4	+7	+10
790.0	2.00	1.72	2.07
890.0	1.83	1.67	2.07
990.0	1.67	1.60	2.06
1090.0	1.57	1.60	2.08
1190.0	1.48	1.62	2.14
1290.0	1.44	1.68	2.22
1390.0	1.45	1.76	2.32
1490.0	1.46	1.81	2.40
1590.0	1.39	1.80	2.44
1690.0	1.27	1.79	2.50
1770.0	1.22	1.79	2.51
1870.0	1.25	1.83	2.57
1950.0	1.32	1.86	2.57
2050.0	1.44	1.92	2.62
2130.0	1.55	1.95	2.60
2230.0	1.70	2.00	2.59
2310.0	1.85	2.08	2.63
2410.0	2.01	2.17	2.65
2490.0	2.07	2.16	2.63
2590.0	2.32	2.28	2.64
2670.0	2.48	2.36	2.67
2770.0	2.65	2.41	2.64
2850.0	2.79	2.42	2.59
2950.0	2.95	2.44	2.52
3030.0	3.16	2.48	2.46
3130.0	3.34	2.52	2.40
3210.0	3.52	2.55	2.34
3310.0	3.71	2.59	2.28
3390.0	3.82	2.62	2.23
3490.0	4.07	2.65	2.15
3570.0	4.09	2.64	2.07
3670.0	4.40	2.71	1.99
3750.0	4.60	2.77	1.95
3850.0	5.09	2.97	1.97
3930.0	5.41	3.10	2.00
4030.0	5.77	3.26	2.06
4110.0	6.09	3.42	2.13
4210.0	6.24	3.52	2.24
4290.0	6.53	3.67	2.37
4390.0	6.51	3.71	2.53

IF (OUT) (MHz)	IF VSWR @LO=3000MHz (:1)		
	@LO (dBm)		
	+4	+7	+10
10.0	1.86	1.59	1.41
30.5	1.92	1.64	1.45
51.0	1.92	1.63	1.45
71.5	1.82	1.56	1.38
92.1	1.80	1.53	1.36
112.6	1.83	1.57	1.40
133.1	1.80	1.54	1.38
153.6	1.70	1.46	1.31
174.1	1.66	1.43	1.30
194.6	1.65	1.43	1.32
215.1	1.62	1.41	1.30
235.6	1.55	1.35	1.25
256.2	1.50	1.33	1.27
276.7	1.47	1.33	1.30
297.2	1.46	1.34	1.33
317.7	1.42	1.31	1.32
338.2	1.39	1.33	1.38
358.7	1.39	1.37	1.45
379.2	1.42	1.43	1.53
399.7	1.42	1.45	1.56
420.3	1.44	1.51	1.63
440.8	1.47	1.59	1.74
461.3	1.52	1.66	1.82
481.8	1.58	1.73	1.89
502.3	1.62	1.80	1.99
522.8	1.68	1.89	2.09
543.3	1.73	1.96	2.16
563.8	1.84	2.08	2.29
584.4	1.85	2.12	2.36
604.9	1.95	2.24	2.48
625.4	2.01	2.31	2.57
645.9	2.11	2.43	2.70
666.4	2.14	2.47	2.73
686.9	2.25	2.60	2.89
707.4	2.28	2.64	2.92
727.9	2.37	2.75	3.04
748.5	2.43	2.81	3.09
769.0	2.48	2.88	3.18
789.5	2.51	2.89	3.17
810.0	2.61	3.01	3.31

Harmonics Tables

RF HARMONICS ORDER

	(-dBm)	(-dBc)										
0	-	-	12	53	24	31	13	45	34	50	40	> 70
1	-	7	+0	41	39	34	33	41	43	46	51	54
2	86	> 70	> 70	66	> 70	> 70	69	61	50	> 70	65	> 70
3	> 90	70	> 70	> 70	61	> 70	> 70	> 70	> 70	> 70	> 70	> 70
4	> 90	> 70	> 70	> 70	> 70	> 70	> 70	> 70	> 70	> 70	> 70	> 70
5	> 90	> 70	> 70	> 70	> 70	> 70	> 70	> 70	> 70	> 70	> 70	> 70
6	> 90	> 70	> 70	> 70	> 70	> 70	> 70	> 70	> 70	> 70	> 70	> 70
7	> 90	> 70	> 70	> 70	> 70	> 70	> 70	> 70	> 70	> 70	> 70	> 70
8	> 90	> 70	> 70	> 70	> 70	> 70	> 70	> 70	> 70	> 70	> 70	> 70
9	> 90	> 70	> 70	> 70	> 70	> 70	> 70	> 70	> 70	> 70	> 70	> 70
10	> 90	> 70	> 70	> 70	> 70	> 70	> 70	> 70	> 70	> 70	> 70	> 70
	RF CAL	0	1	2	3	4	5	6	7	8	9	10

LO HARMONICS ORDER

Test conditions: RF IN: 2150.00 MHz; -14.00 dBm.
 LO IN: 2180.00 MHz; +7.00 dBm
 IF OUT: 30.00 MHz; -19.99 dBm

RF HARMONICS ORDER

	(-dBm)	(-dBc)										
0	-	-	22	64	34	42	25	57	48	63	73	75
1	-	7	+0	38	39	36	34	44	46	51	56	61
2	66	77	65	56	79	> 80	61	55	44	77	61	73
3	> 90	50	65	57	42	59	73	54	59	63	60	65
4	> 90	74	> 80	> 80	> 80	77	> 80	> 80	77	69	61	> 80
5	> 90	> 80	> 80	> 80	> 80	> 80	62	> 80	> 80	72	79	> 80
6	> 90	> 80	> 80	> 80	> 80	> 80	> 80	> 80	> 80	> 80	> 80	> 80
7	> 90	> 80	> 80	> 80	> 80	> 80	> 80	> 80	> 80	> 80	> 80	> 80
8	> 90	> 80	> 80	> 80	> 80	> 80	> 80	> 80	> 80	> 80	> 80	> 80
9	> 90	> 80	> 80	> 80	> 80	> 80	> 80	> 80	> 80	> 80	> 80	> 80
10	> 90	> 80	> 80	> 80	> 80	> 80	> 80	> 80	> 80	> 80	> 80	> 80
	RF CAL	0	1	2	3	4	5	6	7	8	9	10

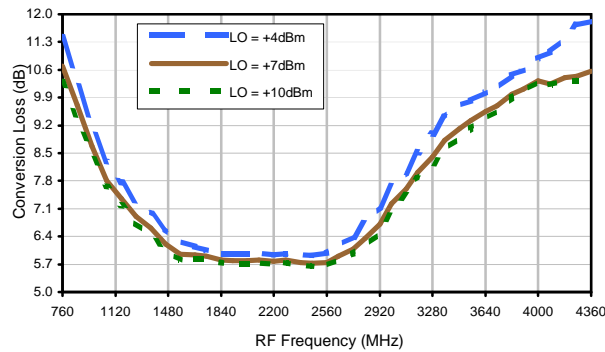
LO HARMONICS ORDER

Test conditions: RF IN: 2150 MHz; -4.00 dBm.
 LO IN: 2180.00 MHz; +7.00 dBm
 IF OUT: 30.00 MHz; -10.06 dBm

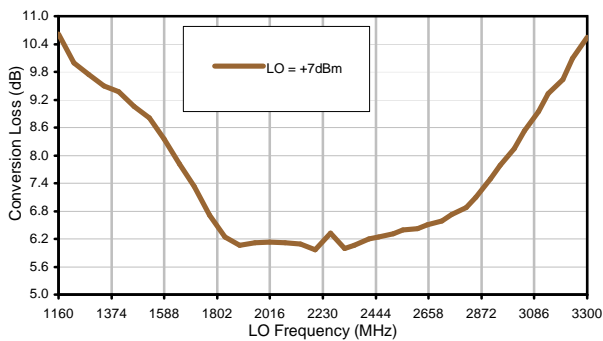
- Notes: 1. All Harmonics are in (dBc) relative to IF OUTPUT.
 2. + entry denotes harmonics are in (dBc) above IF OUTPUT.
 3. RF Cal represent the Harmonics level of the RF input signal to the mixer.

Typical Performance Curves

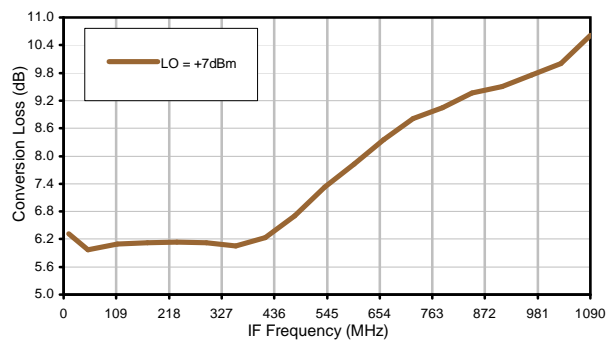
Conversion Loss @ IF=30MHz



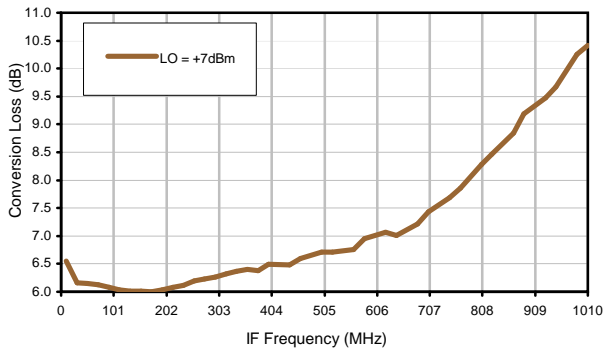
Conversion Loss vs. LO @ RF=2250MHz



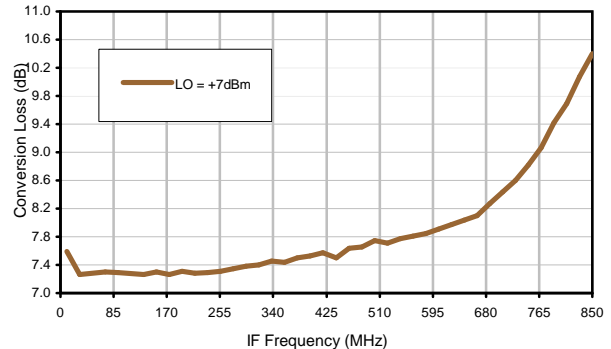
Conversion Loss vs. IF @ RF=2250MHz



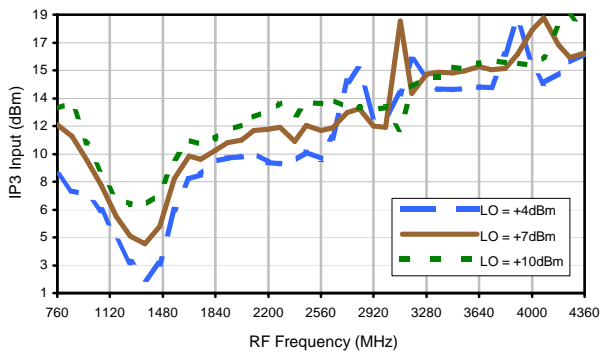
Conversion Loss vs. IF @ RF=1489.9MHz



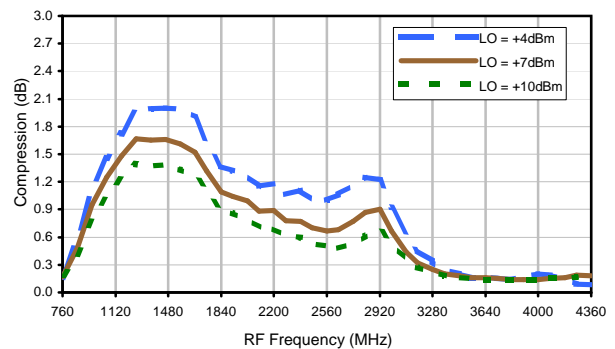
Conversion Loss vs. IF @ RF=3010.1001MHz



IP3 Input

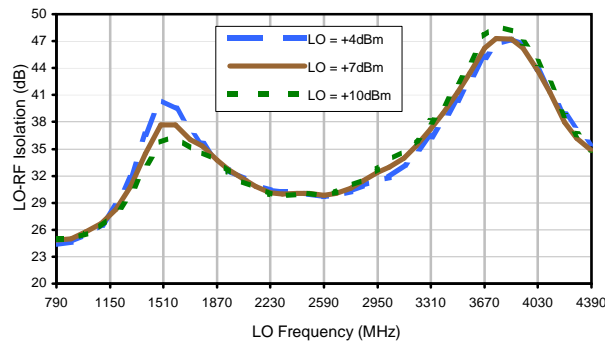


Compression @ RF IN=+1dBm

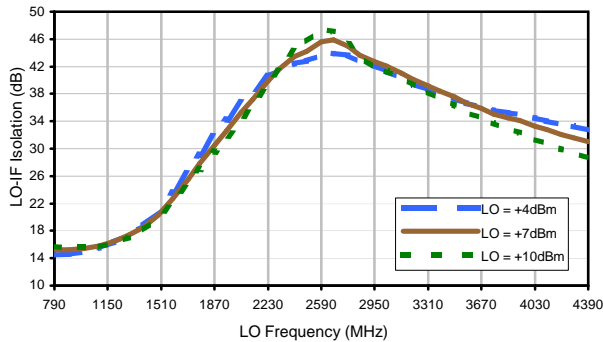


Typical Performance Curves

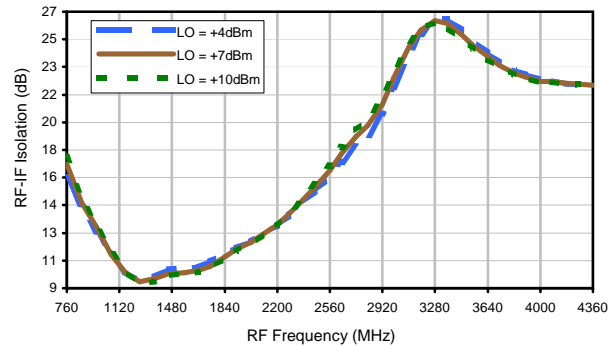
LO-RF Isolation



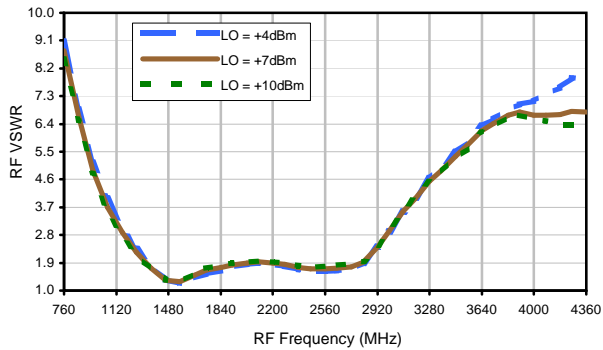
LO-IF Isolation



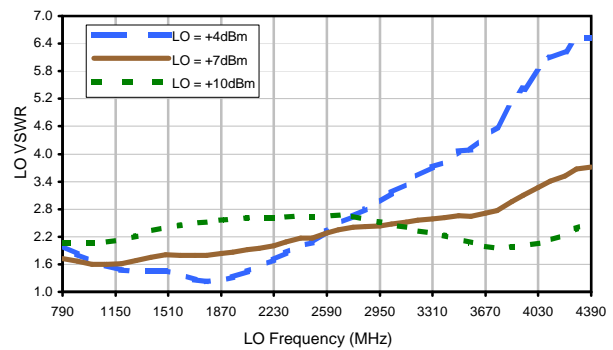
RF-IF Isolation



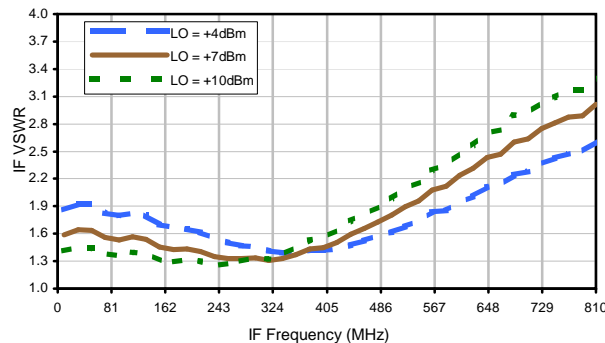
RF VSWR



LO VSWR



IF VSWR



Harmonics Tables

RF HARMONICS ORDER

	(-dBm)	(-dBc)										
0	-	-	12	53	24	31	13	45	34	50	40	> 70
1	-	7	+0	41	39	34	33	41	43	46	51	54
2	86	> 70	> 70	66	> 70	> 70	69	61	50	> 70	65	> 70
3	> 90	70	> 70	> 70	61	> 70	> 70	> 70	> 70	> 70	> 70	> 70
4	> 90	> 70	> 70	> 70	> 70	> 70	> 70	> 70	> 70	> 70	> 70	> 70
5	> 90	> 70	> 70	> 70	> 70	> 70	> 70	> 70	> 70	> 70	> 70	> 70
6	> 90	> 70	> 70	> 70	> 70	> 70	> 70	> 70	> 70	> 70	> 70	> 70
7	> 90	> 70	> 70	> 70	> 70	> 70	> 70	> 70	> 70	> 70	> 70	> 70
8	> 90	> 70	> 70	> 70	> 70	> 70	> 70	> 70	> 70	> 70	> 70	> 70
9	> 90	> 70	> 70	> 70	> 70	> 70	> 70	> 70	> 70	> 70	> 70	> 70
10	> 90	> 70	> 70	> 70	> 70	> 70	> 70	> 70	> 70	> 70	> 70	> 70
	RF CAL	0	1	2	3	4	5	6	7	8	9	10

LO HARMONICS ORDER

Test conditions: RF IN: 2150.00 MHz; -14.00 dBm.
 LO IN: 2180.00 MHz; +7.00 dBm
 IF OUT: 30.00 MHz; -19.99 dBm

RF HARMONICS ORDER

	(-dBm)	(-dBc)										
0	-	-	22	64	34	42	25	57	48	63	73	75
1	-	7	+0	38	39	36	34	44	46	51	56	61
2	66	77	65	56	79	> 80	61	55	44	77	61	73
3	> 90	50	65	57	42	59	73	54	59	63	60	65
4	> 90	74	> 80	> 80	> 80	77	> 80	> 80	77	69	61	> 80
5	> 90	> 80	> 80	> 80	> 80	> 80	62	> 80	> 80	72	79	> 80
6	> 90	> 80	> 80	> 80	> 80	> 80	> 80	> 80	> 80	> 80	> 80	> 80
7	> 90	> 80	> 80	> 80	> 80	> 80	> 80	> 80	> 80	> 80	> 80	> 80
8	> 90	> 80	> 80	> 80	> 80	> 80	> 80	> 80	> 80	> 80	> 80	> 80
9	> 90	> 80	> 80	> 80	> 80	> 80	> 80	> 80	> 80	> 80	> 80	> 80
10	> 90	> 80	> 80	> 80	> 80	> 80	> 80	> 80	> 80	> 80	> 80	> 80
	RF CAL	0	1	2	3	4	5	6	7	8	9	10

LO HARMONICS ORDER

Test conditions: RF IN: 2150 MHz; -4.00 dBm.
 LO IN: 2180.00 MHz; +7.00 dBm
 IF OUT: 30.00 MHz; -10.06 dBm

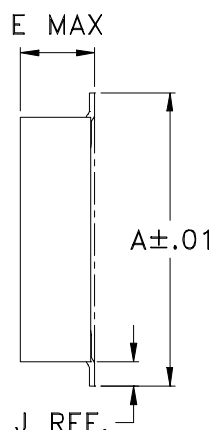
- Notes: 1. All Harmonics are in (dBc) relative to IF OUTPUT.
 2. + entry denotes harmonics are in (dBc) above IF OUTPUT.
 3. RF Cal represent the Harmonics level of the RF input signal to the mixer.

Case Style

CD

CD541
CD542
CD636
CD637

Outline Dimensions



PCB Land Pattern



Suggested Layout,
Tolerance to be within $\pm .002$

CASE#	A	B	C	D	E	F	G	H	J	K	L	WT, GRAM
CD541					.082 (2.08)							.15
CD542	.272 (6.91)	.310 (7.87)	.220 (5.58)	.100 (2.54)	.112 (2.84)	.055 (1.40)	.100 (2.54)	.030 (0.76)	.026 (0.66)	.065 (1.65)	.300 (7.62)	.20
CD636					.162 (4.11)							.25
CD637					.206 (5.23)							.40

Dimensions are in inches (mm). Tolerances: 2 Pl. $\pm .01$; 3 Pl. $\pm .005$

Notes:

- Case material: Plastic.
- Termination finish:
 - For RoHS Case Styles: Tin plate over Nickel plate. All models, (+) suffix.
 - For RoHS-5 Case Styles: Tin-Lead plate. All models, no (+) suffix.

Mini-Circuits[®]

INTERNET <http://www.minicircuits.com>

P.O. Box 350166, Brooklyn, New York 11235-0003 (718) 934-4500 Fax (718) 332-4661

Distribution Centers NORTH AMERICA 800-654-7949 • 417-335-5935 • Fax 417-335-5945 • EUROPE 44-1252-832600 • Fax 44-1252-837010

Mini-Circuits ISO 9001 & ISO 14001 Certified

Tape & Reel Packaging TR-F34



Tape Width, mm	Device Cavity Pitch, mm	Reel Size, inches	Devices per Reel see note	
16	12	7	Small quantity standard (see note)	20
				50
				100
				200
		13	Standard	500
				1000

Note: Availability of small reel quantity varies by model.
Refer to pricing and availability on individual model dashboard.

Mini-Circuits carrier tape materials provide protection from ESD (Electro-Static Discharge) during handling and transportation. Tapes are static dissipative and comply with industry standards EIA-481/EIA-541.

Go to: www.minicircuits.com/pages/pdfs/tape.pdf



INTERNET <http://www.minicircuits.com>

P.O. Box 350166, Brooklyn, New York 11235-0003 (718) 934-4500 Fax (718) 332-4661

Distribution Centers NORTH AMERICA 800-654-7949 • 417-335-5935 • Fax 417-335-5945 • EUROPE 44-1252-832600 • Fax 44-1252-837010

Mini-Circuits ISO 9001 & ISO 14001 Certified

THIRD ANGLE PROJECTION



REVISIONS

REV	ECN No.	DESCRIPTION	DATE	DR	AUTH
OR	M82272	NEW RELEASE	08/05/02	MMG	DJ
A	M102713	ADDED NOTE 2 & "...WITH SMOBC"	01/17/06	MMG	IL

**SUGGESTED MOUNTING CONFIGURATION
FOR CD541/542/636/637 CASE STYLES,
"jv", "ju", "jw" PIN CONNECTIONS**



- NOTES:** 1. TRACE WIDTH IS SHOWN FOR ROGERS R04350B WITH DIELECTRIC THICKNESS .030" ± .002"; COPPER: 1/2 OZ. EACH SIDE. FOR OTHER MATERIALS TRACE WIDTH MAY NEED TO BE MODIFIED.
2. BOTTOM SIDE OF THE PCB IS CONTINUOUS GROUND PLANE.

- DENOTES PCB COPPER LAYOUT WITH SMOBC (SOLDER MASK OVER BARE COPPER)
- DENOTES COPPER LAND PATTERN FREE OF SOLDER MASK

UNLESS OTHERWISE SPECIFIED

DIMENSIONS ARE IN INCHES
TOLERANCES ON:
2 PL DECIMALS ±
3 PL DECIMALS ± .005
ANGLES ±
FRACTIONS ±

	INITIALS	DATE
DRAWN	MMG	07/17/02
CHECKED	WL	08/02/02
APPROVED	DJ	08/05/02



Mini-Circuits®

13 Neptune Avenue
Brooklyn NY 11235

PL, jv/ju/jw, CD541/542/636/637, ADE, TB-02

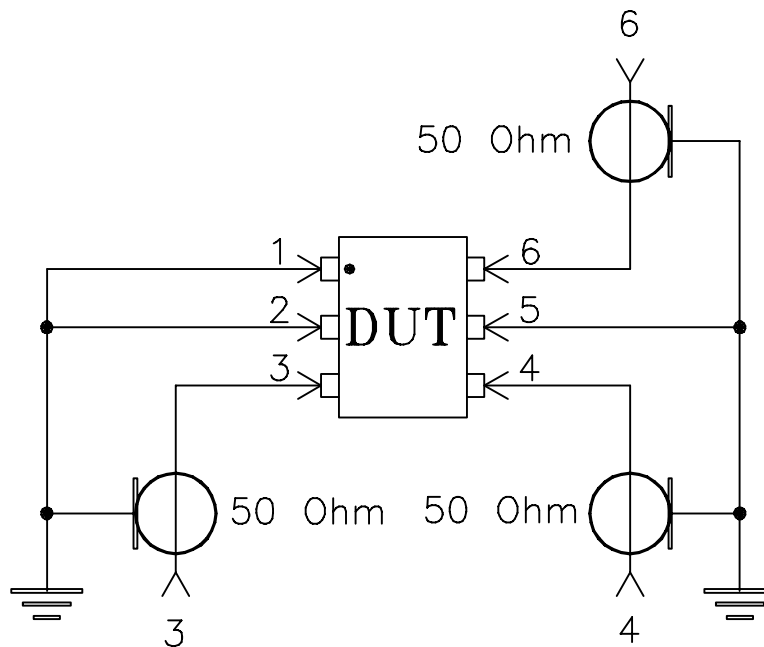
Mini-Circuits®
THIS DOCUMENT AND ITS CONTENTS ARE THE PROPERTY OF MINI-CIRCUITS. EXCEPT FOR USE EXPRESSLY GRANTED, IN WRITING, TO ITS VENDORS, VENDEE AND THE UNITED STATES GOVERNMENT, MINI-CIRCUITS RESERVES ALL PROPRIETARY DESIGN, USE, MANUFACTURING AND REPRODUCTION RIGHTS THERETO. THESE CONTENTS SHALL NOT BE USED, DUPLICATED OR DISCLOSED TO ANY OUTSIDE PARTY, IN WHOLE OR IN PART, WITHOUT WRITTEN PERMISSION OF MINI-CIRCUITS.

ASHEETA1.DWG REV:A DATE:01/12/95

SIZE	CODE IDENT	DRAWING NO:	REV:
A	15542	98-PL-051	A
FILE:	98PL051	SCALE: 8:1	SHEET: 1 OF 1

Evaluation Board and Circuit

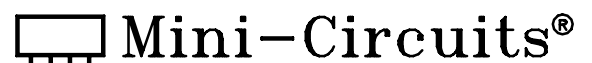
For Pin Connections refer to Data Sheet of the DUT



Schematic Diagram

Notes:

1. SMA Female connectors.
2. PCB Material: Rogers R04350 or equivalent,
Dielectric Constant=3.5, Thickness=.030 inch.



All Mini-Circuits products are manufactured under exacting quality assurance and control standards, and are capable of meeting published specifications after being subjected to any or all of the following physical and environmental test.

Specification	Test/Inspection Condition	Reference/Spec
Operating Temperature	-40° to 85°C Ambient Environment	Individual Model Data Sheet
Storage Temperature	-55° to 100° C Ambient Environment	Individual Model Data Sheet
Humidity	90 to 95% RH, 240 hours, 50°C	MIL-STD-202, Method 103, Condition A, Except 50°C and end-point electrical test done within 12 hours
Thermal Shock	-55° to 100°C, 100 cycles	MIL-STD-202, Method 107, Condition A-3, except +100°C
Solder Reflow Heat	Sn-Pb Eutetic Process: 225°C peak Pb-Free Process 245° - 250°C peak	J-STD-020, Table 4-1, 4-2 and 5-2, Figure 5-1
Solderability	10X Magnification	J-STD-002, 95% Coverage
Vibration (High Frequency)	20g peak, 10-2000 Hz, 12 times in each of three perpendicular directions (total 36)	MIL-STD-202, Method 204, Condition D
Mechanical Shock	50g, 11 ms, 1/2-sine, 18 shocks: 3 each direction, each of 3 axes	MIL-STD-202, Method 213, Condition A
Marking Resistance to Solvents	Isopropyl alcohol + mineral spirits at 25°C; terpene defluxer at 25°C; distilled water + proylene glycol monomethyl ether + monoethanolamine at 63°C to 70°C	MIL-STD-202, Method 215