



SURFACE MOUNT

RF Transformer

ADT16-1T+

Mini-Circuits

50Ω

1.5 to 160 MHz

FEATURES

- Excellent Return Loss, 16 dB Typ.
- Excellent Amplitude Unbalance, 0.1 dB Typ.
- Excellent Phase Unbalance, 1 Deg. Typ.
- Aqueous Washable
- Protected Under US Patent 6,133,525



Generic photo used for illustration purposes only

CASE STYLE: CD542

+RoHS Compliant

The +Suffix identifies RoHS Compliance. See our website for methodologies and qualifications

APPLICATIONS

- Impedance Matching
- Baluns

ELECTRICAL SPECIFICATIONS AT +25°C

Parameter	Frequency (MHz)	Min.	Typ.	Max.	Units
Impedance Ratio (Secondary/Primary)			16		
Frequency Range		1.5		160	MHz
Insertion Loss ¹	1.5-160		3		dB
	3-105		2		
	5-65		1		
Amplitude Unbalance	5-65		0.1		dB
	3-105		0.1		
Phase Unbalance	5-65		1		Degree
	3-105		1		

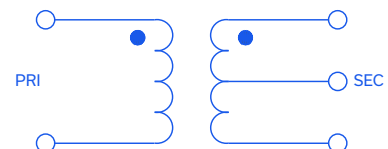
1. Insertion Loss is referenced to mid-band loss, 0.9 dB typ.

ABSOLUTE MAXIMUM RATINGS

Parameter	Ratings
Operating Temperature	-20°C to +85°C
Storage Temperature	-55°C to +100°C
RF Power	0.25 W
DC Current	30 mA

Permanent damage may occur if any of these limits are exceeded.

CONFIGURATION A



REV. F
ECO-014934
ADT16-1T+
MCL NY
251104





SURFACE MOUNT

RF Transformer

ADT16-1T+

Mini-Circuits

50Ω

1.5 to 160 MHz

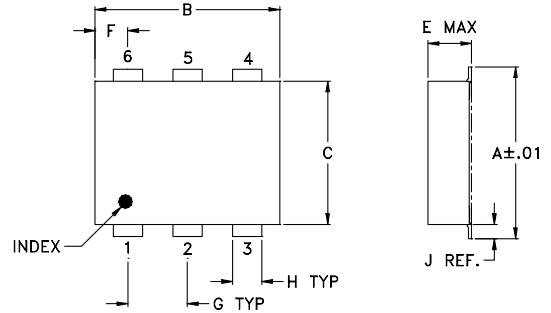
PIN CONNECTIONS

PRIMARY DOT	3
PRIMARY	1
SECONDARY DOT	4
SECONDARY	6
SECONDARY CT	5
NOT USED	2

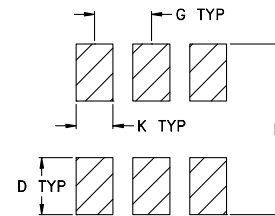
PRODUCT MARKING: ADT16-1T+

DEMO BOARD MCL P/N: TB-ADT16-1T+

OUTLINE DRAWING



PBC Land Pattern



Suggested Layout,
Tolerance to be within ± 0.002 in

OUTLINE DIMENSIONS (Inches/mm)

A	B	C	D	E	F	G		
.272	.310	.220	.100	.112	.055	.100		
6.91	7.87	5.59	2.54	2.84	1.40	2.54		
H	J	K	L					wt
.030	.026	.065	.300					grams
0.76	0.66	1.65	7.62					0.20

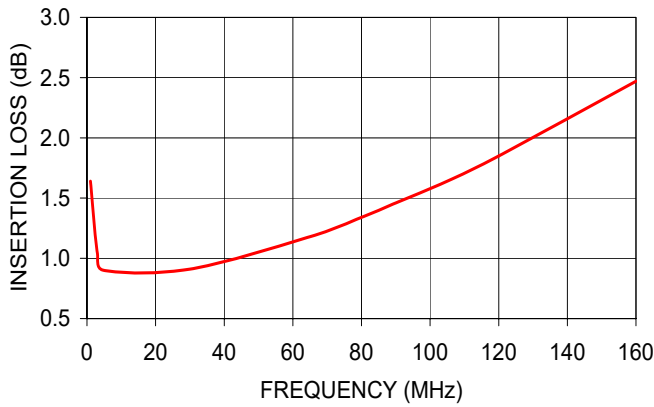
TAPE & REEL INFORMATION: F34



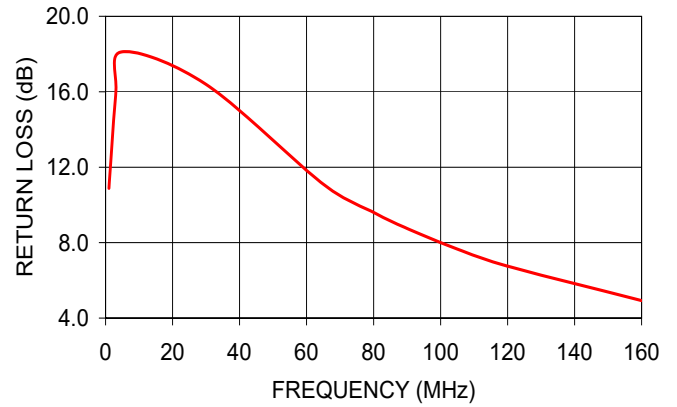
TYPICAL PERFORMANCE DATA

Frequency (MHz)	Insertion Loss (dB)	Return Loss (dB)	Amplitude Unbalance (dB)	Phase Unbalance (deg)
1	1.64	10.88	0.01	0.06
3	1.05	15.81	0.01	0.03
5	0.90	18.12	0.01	0.02
30	0.91	16.39	0.01	0.03
65	1.18	11.10	0.00	0.04
80	1.34	9.60	0.00	0.04
90	1.46	8.75	0.00	0.11
105	1.64	7.66	0.01	0.03
120	1.85	6.75	0.01	0.02
160	2.47	4.93	0.04	0.07

INSERTION LOSS



INPUT RETURN LOSS



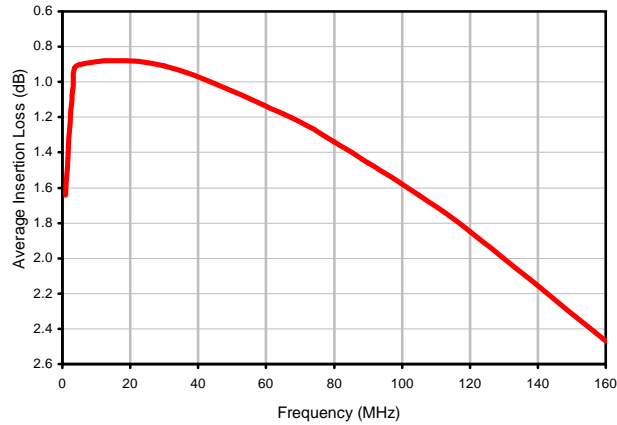
- NOTES**
- A. Performance and quality attributes and conditions not expressly stated in this specification document are intended to be excluded and do not form a part of this specification document.
 - B. Electrical specifications and performance data contained in this specification document are based on Mini-Circuit's applicable established test performance criteria and measurement instructions.
 - C. The parts covered by this specification document are subject to Mini-Circuits standard limited warranty and terms and conditions (collectively, "Standard Terms"); Purchasers of this part are entitled to the rights and benefits contained therein. For a full statement of the standard. Terms and the exclusive rights and remedies thereunder, please visit Mini-Circuits' website at www.minicircuits.com/terms/viewterm.html

Typical Performance Data

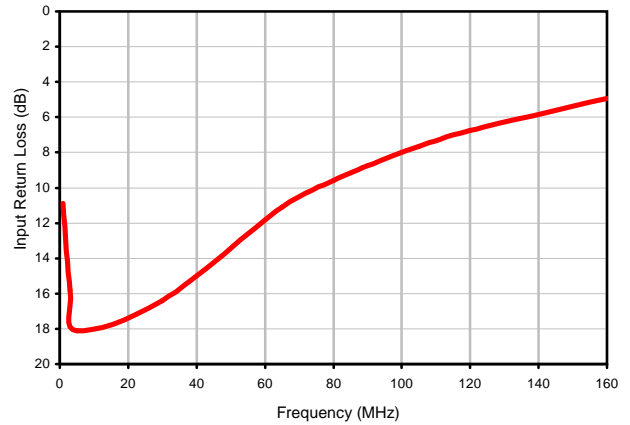
FREQUENCY (MHz)	AVERAGE INSERTION LOSS (dB)	INPUT RETURN LOSS (dB)	AMPLITUDE UNBALANCE (dB)	PHASE UNBALANCE (deg)
1	1.64	10.88	0.01	0.06
3	1.05	15.81	0.01	0.03
5	0.90	18.12	0.01	0.02
30	0.91	16.39	0.01	0.03
65	1.18	11.10	0.00	0.04
80	1.34	9.60	0.00	0.04
90	1.46	8.75	0.00	0.11
105	1.64	7.66	0.01	0.03
120	1.85	6.75	0.01	0.02
160	2.47	4.93	0.04	0.07

Typical Performance Curves

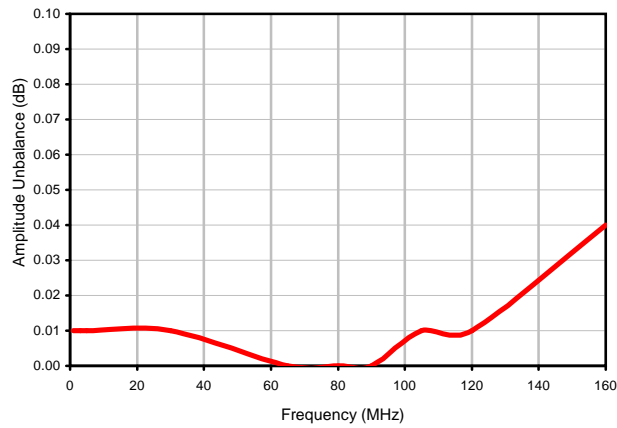
Average Insertion Loss



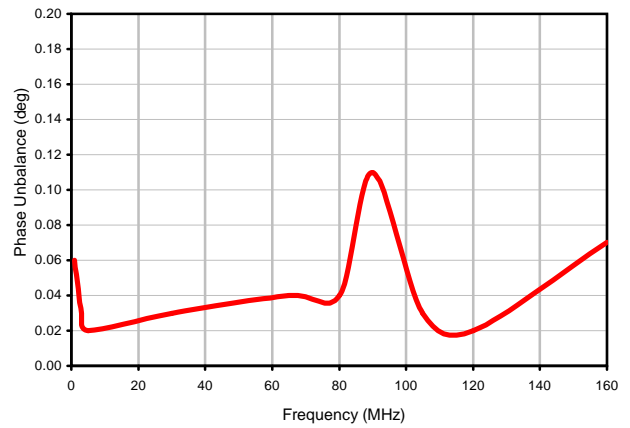
Input Return Loss



Amplitude Unbalance



Phase Unbalance

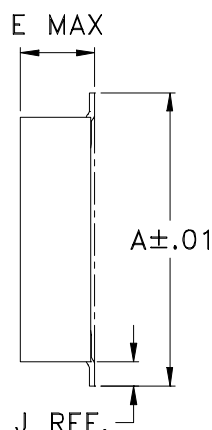
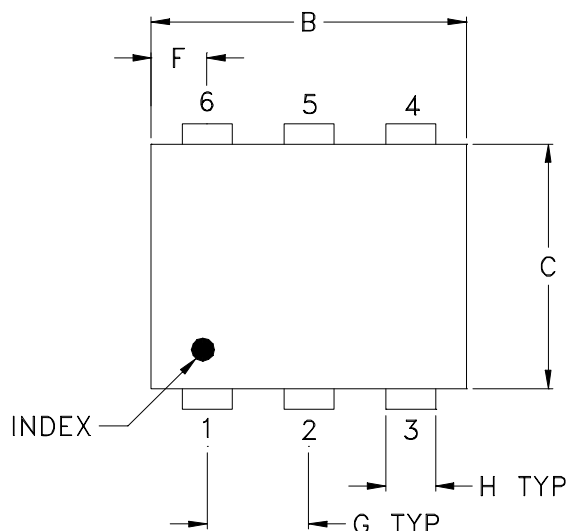


Case Style

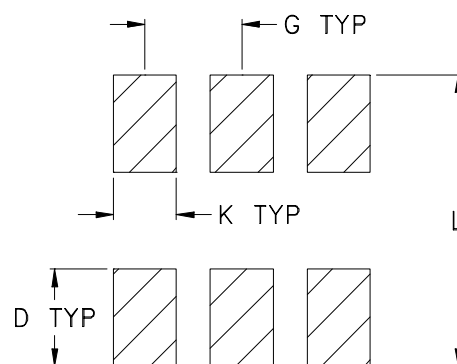
CD

CD541
CD542
CD636
CD637

Outline Dimensions



PCB Land Pattern



Suggested Layout,
Tolerance to be within $\pm .002$

CASE#	A	B	C	D	E	F	G	H	J	K	L	WT, GRAM
CD541					.082 (2.08)							.15
CD542	.272 (6.91)	.310 (7.87)	.220 (5.58)	.100 (2.54)	.112 (2.84)	.055 (1.40)	.100 (2.54)	.030 (0.76)	.026 (0.66)	.065 (1.65)	.300 (7.62)	.20
CD636					.162 (4.11)							.25
CD637					.206 (5.23)							.40

Dimensions are in inches (mm). Tolerances: 2 Pl. $\pm .01$; 3 Pl. $\pm .005$

Notes:

- Case material: Plastic.
- Termination finish:
 - For RoHS Case Styles: Tin plate over Nickel plate. All models, (+) suffix.
 - For RoHS-5 Case Styles: Tin-Lead plate. All models, no (+) suffix.

Mini-Circuits®

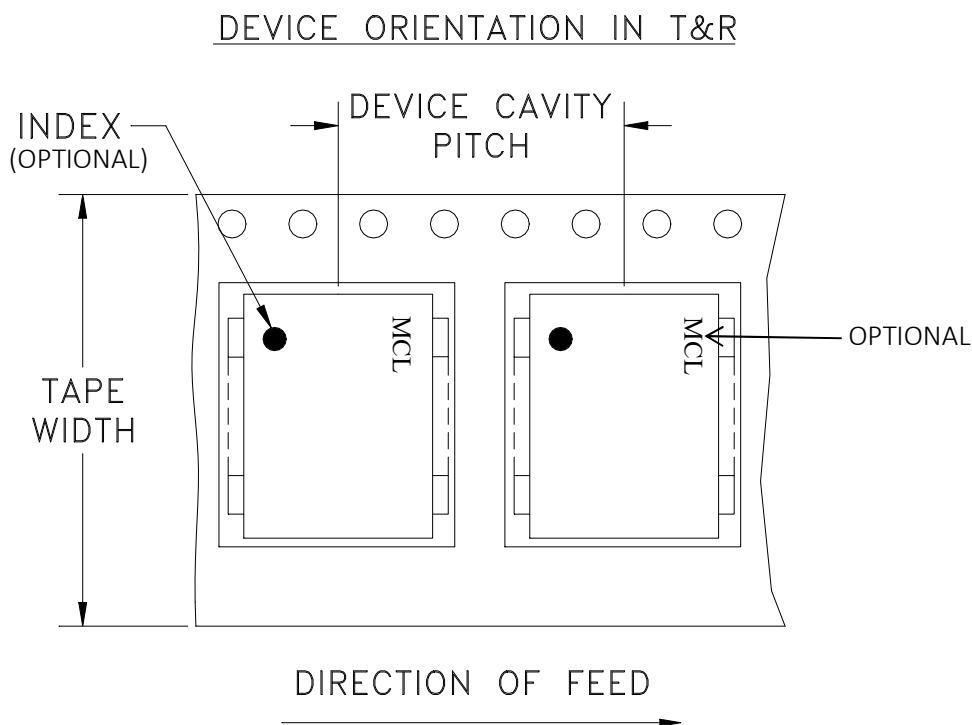
INTERNET <http://www.minicircuits.com>

P.O. Box 350166, Brooklyn, New York 11235-0003 (718) 934-4500 Fax (718) 332-4661

Distribution Centers NORTH AMERICA 800-654-7949 • 417-335-5935 • Fax 417-335-5945 • EUROPE 44-1252-832600 • Fax 44-1252-837010

Mini-Circuits ISO 9001 & ISO 14001 Certified

Tape & Reel Packaging TR-F34



Tape Width, mm	Device Cavity Pitch, mm	Reel Size, inches	Devices per Reel see note	
16	12	7	Small quantity standard (see note)	20
				50
				100
				200
		13	Standard	500
				1000

Note: Availability of small reel quantity varies by model.
Refer to pricing and availability on individual model dashboard.

Mini-Circuits carrier tape materials provide protection from ESD (Electro-Static Discharge) during handling and transportation. Tapes are static dissipative and comply with industry standards EIA-481/EIA-541.

Go to: www.minicircuits.com/pages/pdfs/tape.pdf



INTERNET <http://www.minicircuits.com>

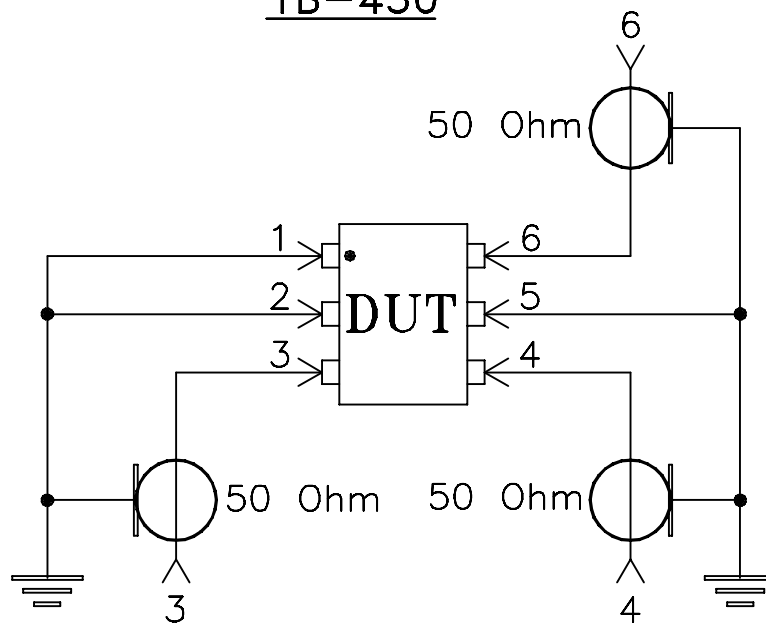
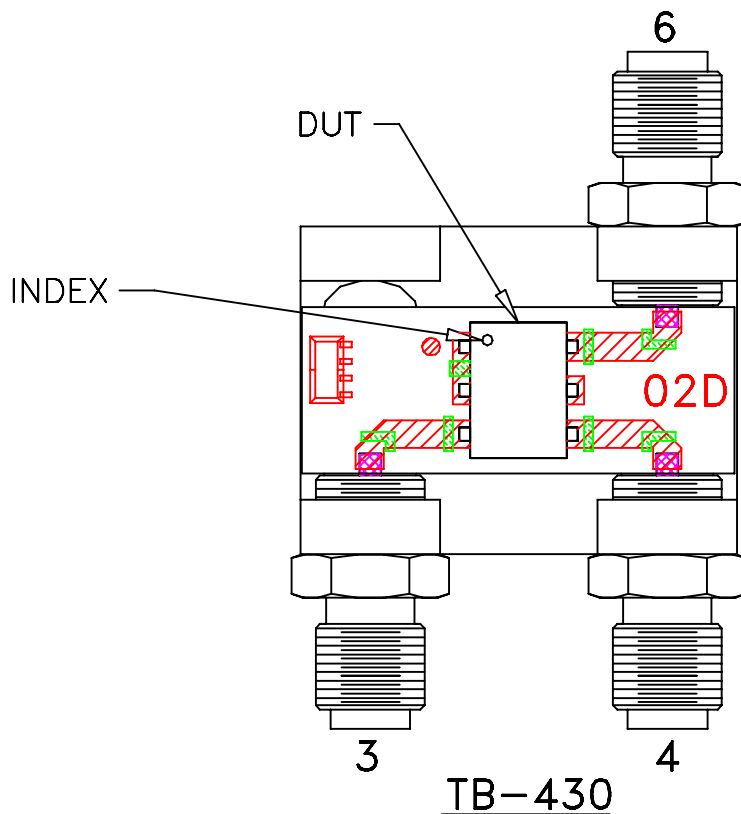
P.O. Box 350166, Brooklyn, New York 11235-0003 (718) 934-4500 Fax (718) 332-4661

Distribution Centers NORTH AMERICA 800-654-7949 • 417-335-5935 • Fax 417-335-5945 • EUROPE 44-1252-832600 • Fax 44-1252-837010

Mini-Circuits ISO 9001 & ISO 14001 Certified

Evaluation Board and Circuit


For Pin Connections refer to Data Sheet of the DUT



Schematic Diagram

Notes:

1. SMA Female connectors.
2. PCB Material: Rogers R04350 or equivalent, Dielectric Constant=3.5, Thickness=.030 inch.
3. Must use ENA/PNA type agilent's network analyzers with impedance conversion option to convert ports to appropriate impedances.

 Mini-Circuits®

All Mini-Circuits products are manufactured under exacting quality assurance and control standards, and are capable of meeting published specifications after being subjected to any or all of the following physical and environmental test.

Specification	Test/Inspection Condition	Reference/Spec
Operating Temperature	-20° to 85°C Ambient Environment	Individual Model Data Sheet
Storage Temperature	-55° to 100° C Ambient Environment	Individual Model Data Sheet
Humidity	90 to 95% RH, 240 hours, 50°C	MIL-STD-202, Method 103, Condition A, Except 50°C and end-point electrical test done within 12 hours
Thermal Shock	-55° to 100°C, 100 cycles	MIL-STD-202, Method 107, Condition A-3, except +100°C
Solder Reflow Heat	Sn-Pb Eutetic Process: 225°C peak Pb-Free Process 245° - 250°C peak	J-STD-020, Table 4-1, 4-2 and 5-2, Figure 5-1
Solderability	10X Magnification	J-STD-002, 95% Coverage
Vibration (High Frequency)	20g peak, 10-2000 Hz, 12 times in each of three perpendicular directions (total 36)	MIL-STD-202, Method 204, Condition D
Mechanical Shock	50g, 11 ms, 1/2-sine, 18 shocks: 3 each direction, each of 3 axes	MIL-STD-202, Method 213, Condition A
Marking Resistance to Solvents	Isopropyl alcohol + mineral spirits at 25°C; terpene defluxer at 25°C; distilled water + proylene glycol monomethyl ether + monoethanolamine at 63°C to 70°C	MIL-STD-202, Method 215