

# Coaxial Bandpass Filter

## BBP-10.7+

50Ω Elliptic Response 9.5 to 11.5 MHz

### Maximum Ratings

Operating Temperature	-55°C to 100°C
Storage Temperature	-55°C to 100°C
RF Power Input	0.5W max.

Permanent damage may occur if any of these limits are exceeded.

### Features

- low insertion loss, 1.5 dB max.
- good selectivity, 1.76 typ. 20 dB/3dB BW ratio
- rugged shielded case

### Applications

- high rejection applications
- image rejection
- IF signal processing



Generic photo used for illustration purposes only

CASE STYLE: FF55

Connectors	Model
BNC	BBP-10.7+

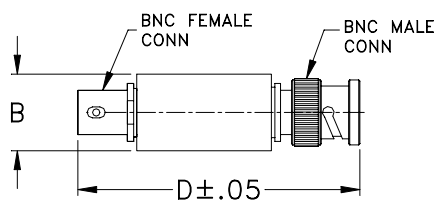
**+RoHS Compliant**

The +Suffix identifies RoHS Compliance. See our web site for RoHS Compliance methodologies and qualifications

### Bandpass Filter Electrical Specifications

CENTER FREQ. (MHz)	PASSBAND (MHz)	3dB BANDWIDTH (MHz)	STOPBANDS		VSWR (:1)	
			(I. loss > 20 dB) at MHz	(I. loss > 35 dB) at MHz	Passband Max.	Stopband Typ.
10.7	9.5-11.5	8.9-12.7	7.5 & 15	0.6 & 50-1000	1.7	16

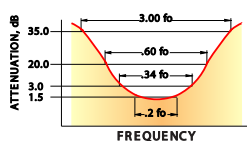
### Outline Drawing



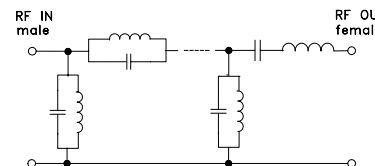
### Outline Dimensions (inch/mm)

B	D	wt
.54	2.59	grams
13.72	65.79	40.0

### typical frequency response

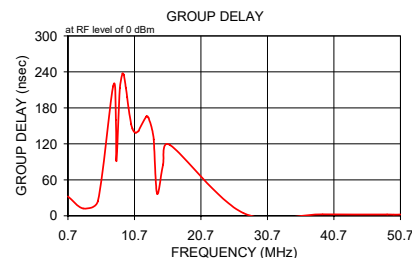
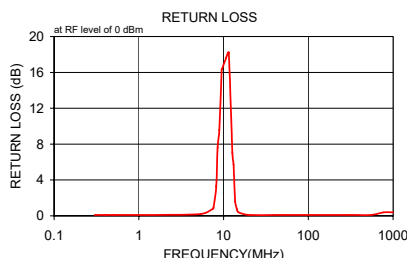
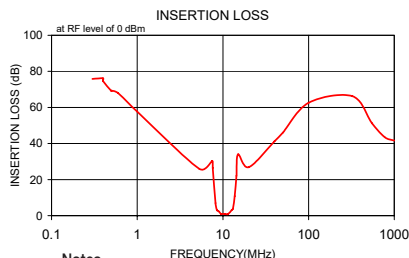


### electrical schematic



### Typical Performance Data

Frequency (MHz)	Insertion Loss (dB)		Return Loss (dB)	Frequency (MHz)	Group Delay (nsec)
	$\bar{x}$	$\sigma$			
0.3	75.80	2.6	0.1	0.7	32.371
0.4	76.10	4.5	0.1	3.0	12.114
0.4	74.62	4.4	0.1	5.2	24.403
0.5	69.06	2.7	0.1	7.5	215.923
0.5	69.33	1.0	0.1	7.9	159.468
0.6	67.91	1.5	0.1	8.0	91.912
1.0	57.74	0.3	0.1	8.5	212.732
5.3	25.94	0.6	0.2	8.9	237.192
7.5	30.37	2.8	0.8	9.1	235.123
7.6	26.43	4.9	0.9	9.4	213.803
8.2	7.00	1.5	3.3	9.6	197.449
8.5	3.15	0.8	7.6	9.8	180.177
8.9	2.45	0.7	9.6	10.2	153.153
9.5	0.99	0.1	16.3	10.4	145.221
9.6	0.97	0.1	16.4	10.6	140.803
10.7	0.86	0.1	17.6	10.9	138.559
11.5	0.92	0.1	18.2	11.3	141.337
12.7	3.16	0.8	7.0	11.5	145.896
13.1	3.82	1.0	5.7	12.5	165.780
13.7	10.81	2.5	1.6	12.8	163.590
14.4	22.10	4.6	0.7	13.3	145.784
15.0	33.97	4.4	0.4	13.6	127.403
20.0	26.84	0.5	0.1	14.1	36.953
40.0	41.22	0.5	0.1	15.0	85.658
50.0	46.00	0.7	0.1	16.0	118.360
100.0	62.57	1.7	0.1	27.1	4.513
325.0	66.25	3.8	0.1	39.0	2.558
550.0	51.22	1.1	0.1	48.7	2.259
775.0	43.48	1.5	0.4	49.7	2.045
1000.0	41.66	1.9	0.4	50.7	2.283



### Notes

- Performance and quality attributes and conditions not expressly stated in this specification document are intended to be excluded and do not form a part of this specification document.
- Electrical specifications and performance data contained in this specification document are based on Mini-Circuit's applicable established test performance criteria and measurement instructions.
- The parts covered by this specification document are subject to Mini-Circuits standard limited warranty and terms and conditions (collectively, "Standard Terms"); Purchasers of this part are entitled to the rights and benefits contained therein. For a full statement of the Standard Terms and the exclusive rights and remedies thereunder, please visit Mini-Circuits' website at [www.minicircuits.com/WCLStore/terms.jsp](http://www.minicircuits.com/WCLStore/terms.jsp)



# Coaxial Band Pass Filter (Elliptic Response) BBP-10.7+

## Typical Performance Data

FREQUENCY (MHz)	INSERTION LOSS (dB)	RETURN LOSS (dB)	FREQUENCY (MHz)	GROUP DELAY (nsec)
0.30	78.60	0.00	9.00	237.19
0.35	76.81	0.00	9.10	218.76
0.40	74.11	0.00	9.20	203.61
0.45	72.16	0.00	9.30	191.17
0.50	70.66	0.00	9.40	180.95
0.55	70.07	0.00	9.45	176.50
0.60	68.32	0.00	9.50	172.47
0.65	66.79	0.00	9.55	168.80
0.70	65.39	0.00	9.60	165.46
0.75	63.82	0.00	9.65	162.33
0.80	62.84	0.00	9.70	159.51
0.90	60.96	0.00	9.75	156.91
1.00	59.20	0.00	9.80	154.52
1.10	57.32	0.00	9.85	152.31
1.20	55.54	0.00	9.90	150.29
1.30	55.01	0.00	9.95	148.39
1.40	53.21	0.00	10.00	146.68
1.50	51.91	0.00	10.05	145.05
1.60	50.68	0.00	10.10	143.61
1.70	49.60	0.00	10.15	142.24
1.80	48.55	0.01	10.20	141.00
1.90	47.61	0.01	10.25	139.86
2.00	46.62	0.00	10.30	138.80
5.30	27.28	0.06	10.35	137.88
7.50	31.35	0.45	10.40	137.05
7.60	24.93	0.53	10.45	136.30
8.20	6.26	2.87	10.50	135.64
8.50	2.40	7.72	10.55	135.05
8.90	0.98	18.45	10.60	134.54
9.50	0.68	21.46	10.65	134.12
9.60	0.66	21.40	10.70	133.78
10.70	0.58	23.38	10.75	133.53
11.50	0.62	26.68	10.80	133.32
12.70	1.43	11.75	10.85	133.20
13.10	3.33	5.29	10.90	133.15
13.70	10.20	1.39	10.95	133.14
14.40	23.48	0.51	11.00	133.25
15.00	36.66	0.35	11.05	133.44
20.00	26.98	0.11	11.10	133.68
30.00	35.78	0.05	11.15	133.98
40.00	41.83	0.04	11.20	134.40
50.00	46.53	0.03	11.25	134.87
100.00	64.50	0.04	11.30	135.44
200.00	59.74	0.05	11.35	136.11
300.00	82.39	0.06	11.40	136.89
400.00	87.91	0.08	11.45	137.73
500.00	85.55	0.15	11.50	138.69
550.00	77.19	0.29	11.55	139.79
600.00	58.12	1.06	11.60	141.01
700.00	48.60	0.65	11.65	142.33
775.00	46.64	0.53	11.70	143.84
800.00	45.47	0.62	11.80	147.24
900.00	39.15	3.07	11.90	151.41
1000.00	44.34	1.53	12.00	156.37

REV. X1  
BBP-10.7+  
100503  
Page 1 of 1



IF/RF MICROWAVE COMPONENTS • ISO 9001 ISO 14001 AS 9100 CERTIFIED • RoHS compliant  
P.O. Box 350166, Brooklyn, New York 11235-0003 (718) 934-4500 Fax (718) 332-4661

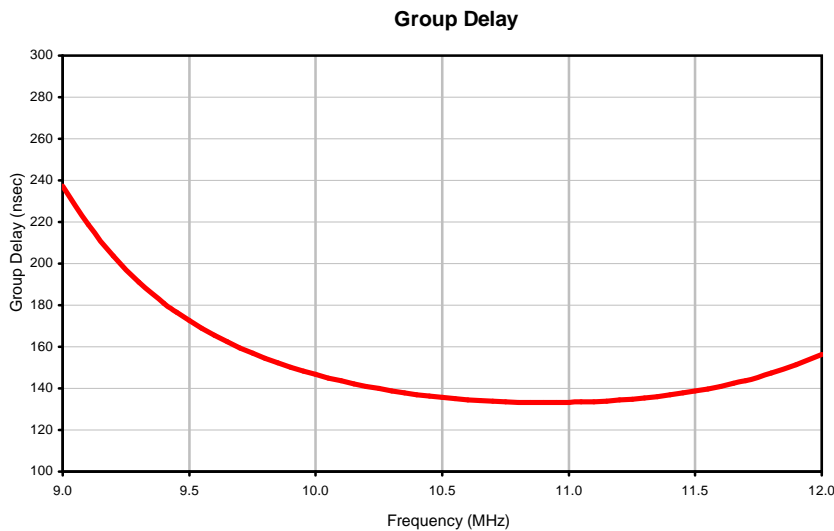
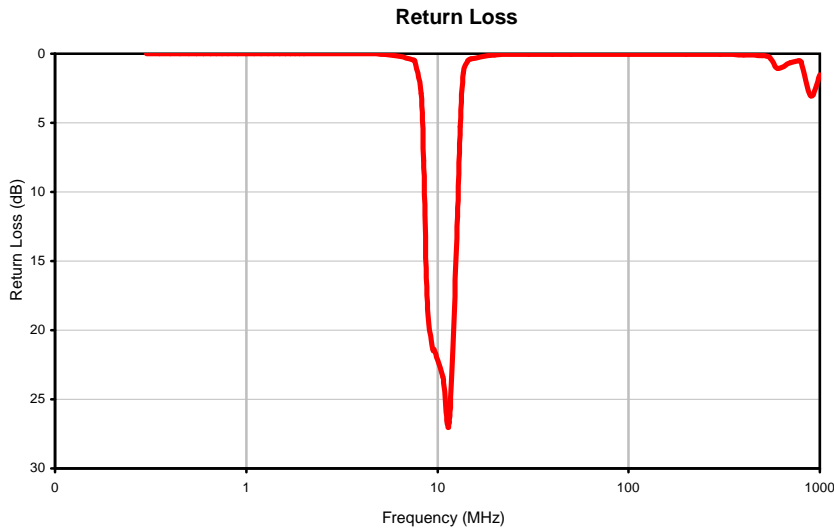


The Design Engineers Search Engine finds the model you need, Instantly • For detailed performance specs & shopping online see



# Coaxial Band Pass Filter (Elliptic Response) BBP-10.7+

## Typical Performance Curves



REV. X1  
 BBP-10.7+  
 100503  
 Page 1 of 1



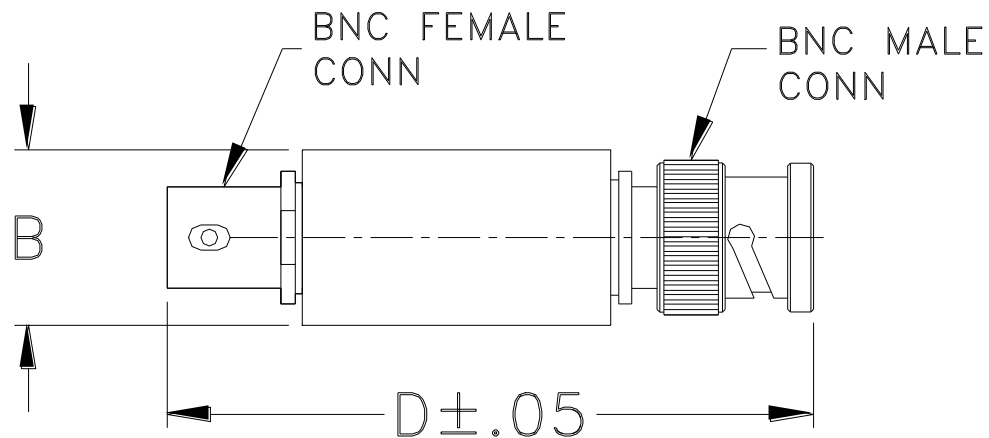
IF/RF MICROWAVE COMPONENTS • ISO 9001 ISO 14001 AS 9100 CERTIFIED RoHS compliant  
 P.O. Box 350166, Brooklyn, New York 11235-0003 (718) 934-4500 Fax (718) 332-4661



The Design Engineers Search Engine finds the model you need, Instantly • For detailed performance specs & shopping online see



### Outline Dimensions



CASE #.	A	B	C	D	E	WT GRAMS
FF55	--	.57 (14.47)	--	2.59 (65.79)	--	40.0

Dimensions are in inches (mm). Tolerances: 2Pl. +.03/-.04; 3Pl. ± .015

#### Note:

1. Case material: Stainless steel.



All Mini-Circuits products are manufactured under exacting quality assurance and control standards, and are capable of meeting published specifications after being subjected to any or all of the following physical and environmental test.

<b>Specification</b>	<b>Test/Inspection Condition</b>	<b>Reference/Spec</b>
Operating Temperature	-55° to 100°C Ambient Environment	Individual Model Data Sheet
Storage Temperature	-55° to 100° C Ambient Environment	Individual Model Data Sheet
Barometric Pressure	100,000 Feet	MIL-STD-202, Method 105, Condition D
Humidity	90% RH, 65°C Units may require bake-out after humidity to restore full performance.	MIL-STD-202, Method 103
Thermal Shock	-65° to 125°C, 5 cycles	MIL-STD-202, Method 107, Condition B
Vibration (High Frequency)	20g peak, 10-2000 Hz, 12 times in each of three perpendicular directions (total 36)	MIL-STD-202, Method 204, Condition D
Mechanical Shock	100g, 6ms sawtooth, 3 shocks each direction 3 axes (total 18)	MIL-STD-202, Method 213, Condition I