

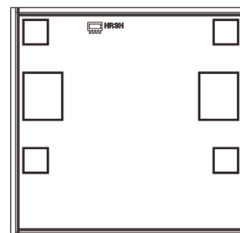
Microwave

Gain Equalizer Die EQY-XX-453-D+ Series

50Ω DC to 45 GHz

The Big Deal

- Excellent Return Loss, 20dB typ.
- Wide bandwidth, DC - 45 GHz



Product Overview

EQY-XX-453-D+ series of absorptive Gain Equalizer dice are fabricated using highly repetitive GaAs IPD* MMIC process incorporating resistors, capacitors and inductors having negative insertion loss slope. EQY-XX-453-D+ are available with nominal attenuation slope of 3, 4, 5, 6, 7, 8, 9 & 10dB.

Key Features

Feature	Advantages
Negative Insertion Loss Slope vs. Frequency	Useful for compensating negative gain slope of amplifiers, receivers, transmitters to achieve flat gain versus frequency.
Wide range of values 3,4,5,6,7, 8, 9 & 10dB	Enables circuit designer to change nominal insertion loss values without motherboard redesign making the EQY-XX-453-D+ Series ideal for select at test application.
Wideband operation, DC to 45 GHz	Supports a wide array of applications including wireless cellular, microwave communications, satellite, defense and aerospace, medical broadband and optic applications.
Excellent Power Handling Capability	Enables its use at the output of a variety of amplifiers
Unpackaged Die	Enables the user to intergrate the gain equalizer directly into hybrids.

*GaAs IPD (Gallium Arsenide Integrated Passive Device)



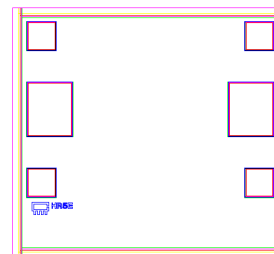
50Ω 5.5dB DC to 45 GHz

Product Features

- 5.5 dB Slope
- Wide Bandwidth, DC-45 GHz
- Excellent Return Loss, 20 dB typ.

Typical Applications

- Cellular Infrastructure
- 5G
- Wideband Communications
- Test Instrumentation
- Defense



+RoHS Compliant

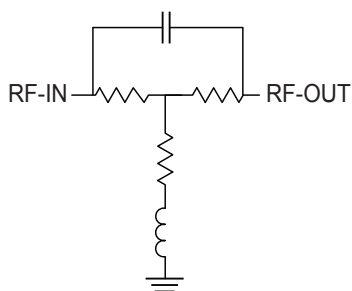
The +Suffix identifies RoHS Compliance. See our web site for RoHS Compliance methodologies and qualifications

Ordering Information: Refer to Last Page

General Description

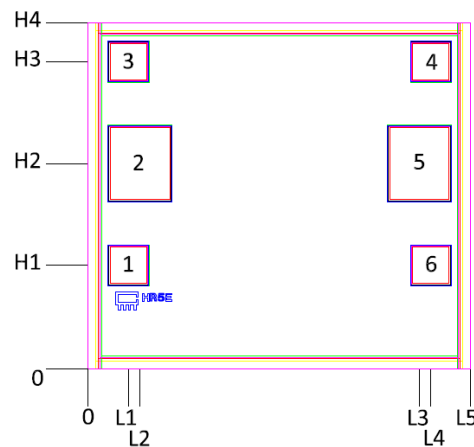
EQY-5-453-D+ is an absorptive Gain Equalizer Die fabricated using highly repetitive GaAs IPD MMIC process incorporating resistors, capacitors and inductors having negative insertion loss slope. EQY-5-453-D+ has a nominal attenuation slope of 5.5 dB.

Simplified Schematic and Pad description



Pad Number	Function	Description
2	RF-IN	RF-Input pad
5	RF-OUT	RF-Output pad
1,3,4,6	GND	Ground

Bonding Pad Position



Dimensions in μm , Typical

L1	L2	L3	L4	L5	H1	H2	H3	H4	Thickness	Die Size	Pad Size 2 & 5	Pad Size 1,3,4,6
79	101	650	673	750	204	404	604	680	100	750x680	117x142	72 X 72

Electrical Specifications¹ at 25°C, 50Ω, unless otherwise noted.

Parameter	Condition (GHz)	Min.	Typ.	Max.	Units
Frequency Range		DC		45	GHz
Insertion Loss	0.01	—	6.6	—	dB
	10	—	5.8	—	
	20	—	4.3	—	
	30	—	2.6	—	
	40	—	1.2	—	
	45	—	1.1	—	
VSWR	0.01 - 10	—	1.05	—	:1
	10 - 20	—	1.16	—	
	20 - 30	—	1.26	—	
	30 - 40	—	1.28	—	
	40 - 45	—	1.30	—	

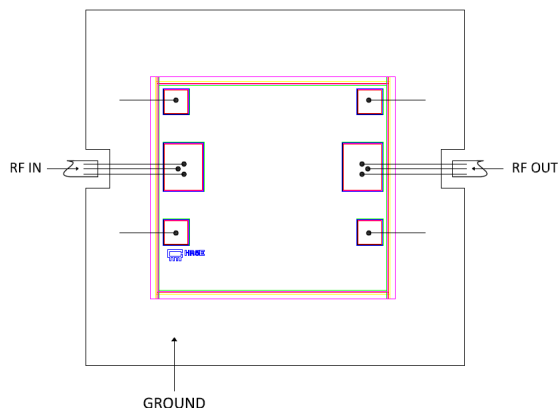
1. Electrical specifications are typical measured using MPI Titan Series 200um pitch GSG probe.

Absolute Maximum Ratings²

Operating Case Temperature	-55°C to 105°C
RF Input Power ³	28 dBm

2. Permanent damage may occur if any of these limits are exceeded.

3. Derates linearly to 24 dBm at 105°C

Assembly Diagram**Assembly and Handling Procedure**

- Storage**
Dice should be stored in a dry nitrogen purged desiccators or equivalent.
- ESD**
MMIC GaAs Gain equalizer dice are susceptible to electrostatic and mechanical damage. Die are supplied in antistatic protected material, which should be opened in clean room conditions at an appropriately grounded anti-static workstation. Devices need careful handling using correctly designed collets, vacuum pickup tips or sharp antistatic tweezers to deter ESD damage to dice.
- Die Attach**
The die mounting surface must be clean and flat. Using conductive silver filled epoxy, recommended epoxies are DieMat DM6030HK-PT/H579 or Ablestik 84-1LMISR4. Apply sufficient epoxy to meet required epoxy bond line thickness, epoxy fillet height and epoxy coverage around total die periphery. Parts shall be cured in a nitrogen filled atmosphere per manufacturer's cure condition. It is recommended to use antistatic die pick up tools only.
- Wire Bonding**
Bond pad openings in the surface passivation above the bond pads are provided to allow wire bonding to the dice gold bond pads. Thermosonic bonding is used with minimized ultrasonic content. Bond force, time, ultrasonic power and temperature are all critical parameters. Suggested wire is pure gold, 1 mil diameter. Bonds must be made from the bond pads on the die to the package or substrate. All bond wires should be kept as short as low as reasonable to minimize performance degradation due to undesirable series inductance.

additional information is available on our dash board.

*Known Good Die (KGD) means that the die are taken from PCM good wafer and then visually inspected per Mini-Circuits' criteria. Though this is not definitive, it does provide a higher degree of confidence that die are capable of meeting typical RF electrical parameters specified by Mini-Circuits.

Human Body Model (HBM): Class 2 (Pass 2000V) in accordance with ANSI/ESD STM 5.1 - 2001

** Tested in industry standard 2 x 2mm, 6-lead MCLP package

- A. Performance and quality attributes and conditions not expressly stated in this specification document are intended to be excluded and do not form a part of this specification document.
- B. Electrical specifications and performance data contained in this specification document are based on Mini-Circuit's applicable established test performance criteria and measurement instructions.
- C. The parts covered by this specification document are subject to Mini-Circuits standard limited warranty and terms and conditions (collectively, "Standard Terms"); Purchasers of this part are entitled to the rights and benefits contained therein. For a full statement of the Standard Terms and the exclusive rights and remedies thereunder, please visit Mini-Circuits' website at www.minicircuits.com/MCLStore/terms.jsp
- D. Mini-Circuits does not warrant the accuracy or completeness of the information, text, graphics and other items contained within this document and same are provided as an accommodation and on an "As is" basis, with all faults.
- E. Purchasers of this part are solely responsible for proper storing, handling, assembly and processing of Known Good Dice (including, without limitation, proper ESD preventative measures, die preparation, die attach, wire bonding and related assembly and test activities), and Mini-Circuits assumes no responsibility therefor or for environmental effects on Known Good Dice.
- F. Mini-Circuits and the Mini-Circuits logo are registered trademarks of Scientific Components Corporation d/b/a Mini-Circuits. All other third-party trademarks are the property of their respective owners. A reference to any third-party trademark does not constitute or imply any endorsement, affiliation, sponsorship, or recommendation by any such third-party of Mini-Circuits or its products.

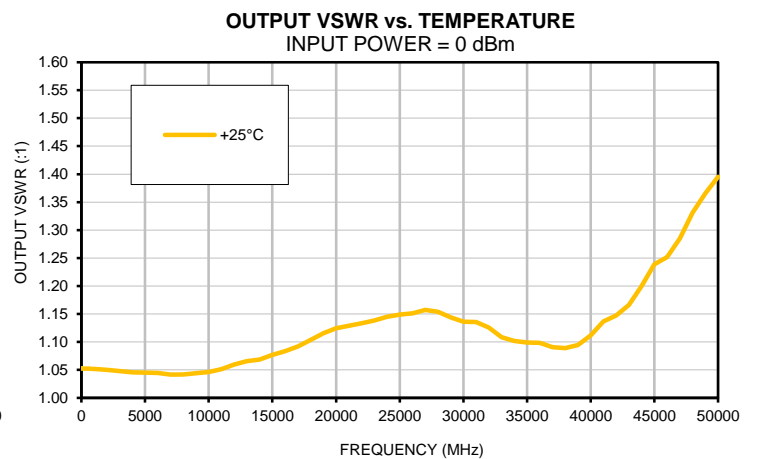
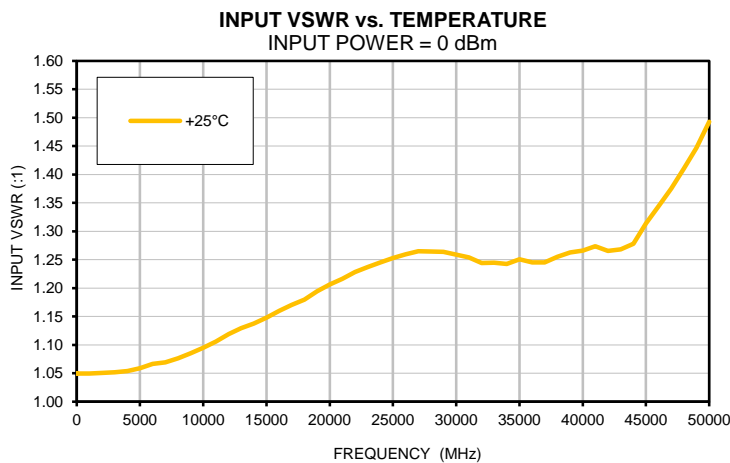
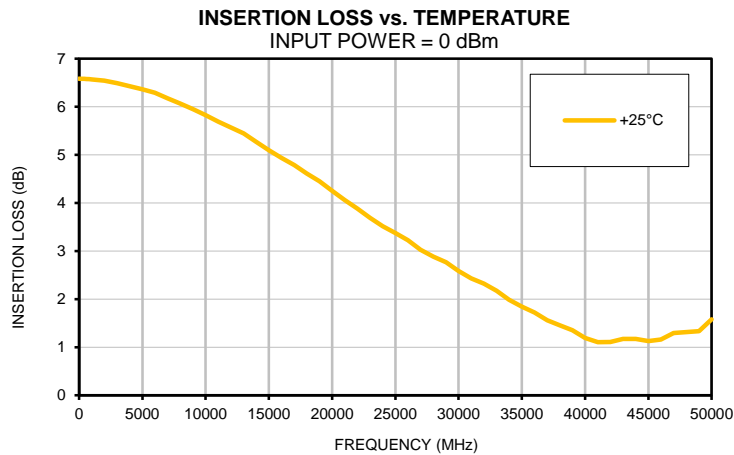
Typical Performance Data

FREQ.	INSERTION LOSS	INPUT VSWR	OUTPUT VSWR
(MHz)	(dB)	(:1)	(:1)
	@25°C	@25°C	@25°C
10	6.58	1.05	1.05
20	6.58	1.05	1.05
30	6.58	1.05	1.05
40	6.58	1.05	1.05
50	6.58	1.05	1.05
60	6.58	1.05	1.05
70	6.58	1.05	1.05
80	6.58	1.05	1.05
90	6.58	1.05	1.05
100	6.58	1.05	1.05
200	6.58	1.05	1.05
400	6.58	1.05	1.05
600	6.58	1.05	1.05
800	6.57	1.05	1.05
1000	6.57	1.05	1.05
2000	6.54	1.05	1.05
3000	6.49	1.05	1.05
4000	6.43	1.05	1.05
5000	6.36	1.06	1.05
6000	6.29	1.07	1.04
7000	6.17	1.07	1.04
8000	6.07	1.08	1.04
9000	5.95	1.09	1.04
10000	5.83	1.09	1.05
11000	5.69	1.11	1.05
12000	5.57	1.12	1.06
13000	5.45	1.13	1.07
14000	5.27	1.14	1.07
15000	5.09	1.15	1.08
16000	4.93	1.16	1.08
17000	4.78	1.17	1.09
18000	4.61	1.18	1.10
19000	4.45	1.19	1.12
20000	4.25	1.21	1.12
21000	4.06	1.22	1.13
22000	3.88	1.23	1.13
23000	3.69	1.24	1.14
24000	3.52	1.25	1.15
25000	3.37	1.25	1.15
26000	3.22	1.26	1.15
27000	3.02	1.26	1.16
28000	2.88	1.26	1.15
29000	2.77	1.26	1.14
30000	2.59	1.26	1.14
31000	2.43	1.25	1.14
32000	2.32	1.24	1.13
33000	2.17	1.24	1.11
34000	1.99	1.24	1.10
35000	1.85	1.25	1.10
36000	1.72	1.25	1.10
37000	1.56	1.25	1.09
38000	1.45	1.26	1.09
39000	1.36	1.26	1.09
40000	1.19	1.27	1.11
41000	1.10	1.27	1.14
42000	1.11	1.27	1.15
43000	1.17	1.27	1.17
44000	1.17	1.28	1.20
45000	1.12	1.31	1.24
46000	1.16	1.34	1.25
47000	1.29	1.38	1.29
48000	1.31	1.41	1.33
49000	1.33	1.45	1.37
50000	1.58	1.49	1.40

MMIC Gain Equalizer Die

EQY-5-453-D+

Typical Performance Curves





All Mini-Circuits products are manufactured under exacting quality assurance and control standards, and are capable of meeting published specifications after being subjected to any or all of the following physical and environmental test.

Specification	Test/Inspection Condition	Reference/Spec
Operating Temperature	-40° to 85° C or -40° to 105° C or -55° to 105° C or -45° to 105° C Ambient Environment	Refer to Individual Model Data Sheet
Storage Environment (Die)	-65° to 150°C	Individual Model Data Sheet
Storage Environment(Packaging)	-40° to 70°C and 40 to 60% humidity (In Factory Shipped Package)	