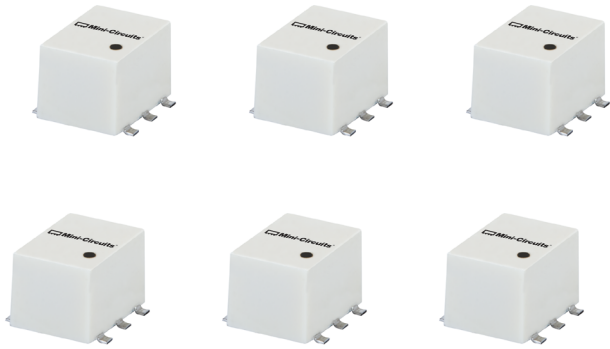




DESIGNER'S KIT K1-ADP+

2WAY-0° Power Splitter/Combiners

50Ω 0.5 to 2000 MHz



FEATURES

- Wideband, 50 Ω
- Low insertion loss
- Excellent amplitude unbalance
- Good phase unbalance
- Aqueous washable
- Small plastic case

(L) 0.310" x (W) 0.272" includes leads

MINI-CIRCUITS DESIGNER'S KITS
SPEED UP
THE SOLUTION



K1-ADP+ ELECTRICAL SPECIFICATIONS

(6 models, 2 of each, 12 total)

Model	Frequency (MHz) f_L - f_U	Isolation (dB)						Insertion Loss (dB) Above 3.0dB						Phase Unbalance (Degrees)			Amplitude Unbalance (dB)			Input Power (W) (as a splitter) Max.
		L*		M		U*		L*		M		U*		L*	M	U*	L*	M	U*	
		Typ.	Min.	Typ.	Min.	Typ.	Min.	Typ.	Max.	Typ.	Max.	Typ.	Max.	Max.	Max.	Max.	Max.	Max.	Max.	
ADP-2-1+	0.5-400	25	20	25	20	25	20	0.2	0.4	0.3	0.6	0.5	1.0	1.0	2.0	3.0	0.10	0.2	0.3	0.5
ADP-2-1W+	1-650	30	20	30	20	24	20	0.2	0.8	0.25	0.8	0.5	1.0	2.0	2.0	3.0	0.15	0.2	0.3	2.0
ADP-2-9+	200-900	—	—	27	20	—	—	—	—	0.4	0.8	—	—	—	2.0	—	—	0.3	—	0.5
ADP-2-10+	5-1000	25	15	23	15	20	15	0.3	0.9	0.4	0.9	0.6	1.2	2.0	2.0	3.0	0.20	0.2	0.3	0.5
ADP-2-4+	10-1000	25	20	23	16	19	14	0.3	0.5	0.4	0.9	0.8	1.5	1.0	3.0	5.0	0.15	0.2	0.4	1.0
ADP-2-20+	20-2000	18	15	18	15	18	15	0.5	0.8	0.7	1.0	0.8	1.5	2.0	3.0	5.0	0.20	0.3	0.7	1.0

L=low range [f_L to $10f_L$] M=mid range [$10f_L$ to $f_U/2$] U=upper range [$f_U/2$ to f_U]

*When only specification for M range given, specification applies to entire frequency range.

Protected under U.S. Patent 6,133,525

REV.A
ECO-009382
M104904
K1-ADP+
210823

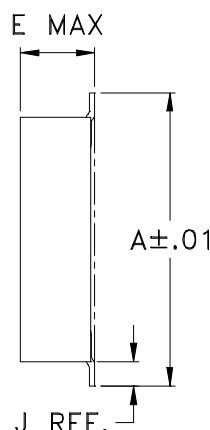
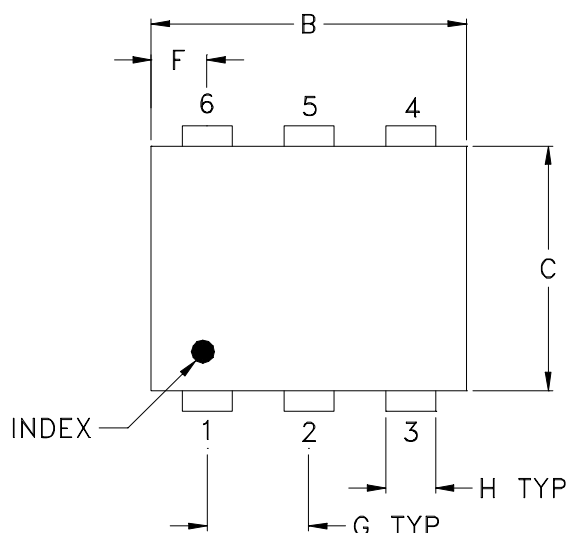


Case Style

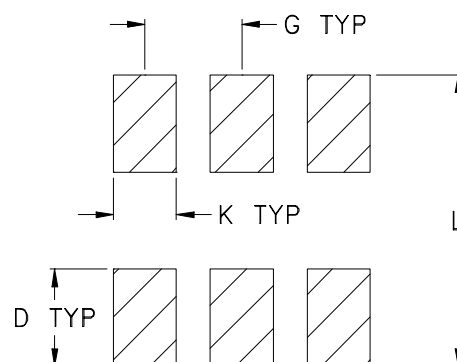
CD

CD541
CD542
CD636
CD637

Outline Dimensions



PCB Land Pattern



Suggested Layout,
Tolerance to be within $\pm .002$

CASE#	A	B	C	D	E	F	G	H	J	K	L	WT, GRAM
CD541					.082 (2.08)							.15
CD542	.272 (6.91)	.310 (7.87)	.220 (5.58)	.100 (2.54)	.112 (2.84)	.055 (1.40)	.100 (2.54)	.030 (0.76)	.026 (0.66)	.065 (1.65)	.300 (7.62)	.20
CD636					.162 (4.11)							.25
CD637					.206 (5.23)							.40

Dimensions are in inches (mm). Tolerances: 2 Pl. $\pm .01$; 3 Pl. $\pm .005$

Notes:

- Case material: Plastic.
- Termination finish:
 - For RoHS Case Styles: Tin plate over Nickel plate. All models, (+) suffix.
 - For RoHS-5 Case Styles: Tin-Lead plate. All models, no (+) suffix.

Mini-Circuits®

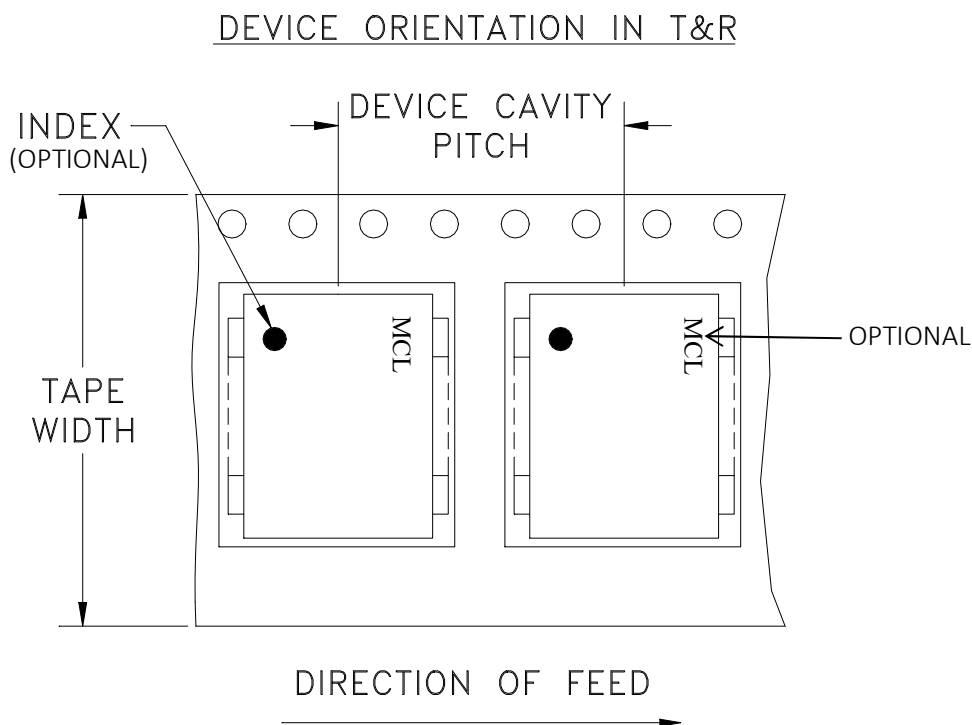
INTERNET <http://www.minicircuits.com>

P.O. Box 350166, Brooklyn, New York 11235-0003 (718) 934-4500 Fax (718) 332-4661

Distribution Centers NORTH AMERICA 800-654-7949 • 417-335-5935 • Fax 417-335-5945 • EUROPE 44-1252-832600 • Fax 44-1252-837010

Mini-Circuits ISO 9001 & ISO 14001 Certified

Tape & Reel Packaging TR-F34



Tape Width, mm	Device Cavity Pitch, mm	Reel Size, inches	Devices per Reel see note	
16	12	7	Small quantity standard (see note)	20
				50
				100
				200
		13	Standard	500
				1000

Note: Availability of small reel quantity varies by model.
Refer to pricing and availability on individual model dashboard.

Mini-Circuits carrier tape materials provide protection from ESD (Electro-Static Discharge) during handling and transportation. Tapes are static dissipative and comply with industry standards EIA-481/EIA-541.

Go to: www.minicircuits.com/pages/pdfs/tape.pdf



INTERNET <http://www.minicircuits.com>

P.O. Box 350166, Brooklyn, New York 11235-0003 (718) 934-4500 Fax (718) 332-4661

Distribution Centers NORTH AMERICA 800-654-7949 • 417-335-5935 • Fax 417-335-5945 • EUROPE 44-1252-832600 • Fax 44-1252-837010

Mini-Circuits ISO 9001 & ISO 14001 Certified