

Engineering Development Model

Frequency Mixer

MBA-EE7756/6

Level 7 (LO Power +7 dBm)

Important Note

This model has been designed, built and tested in our engineering department. Performance data represents model capability. At present it is a non-catalog model. On request, we can supply a final specification sheet, part number and price/delivery information.



Please click "Back", and then click "Contact Us" for Applications support.

CASE STYLE : SM2

| ELECTRICAL SPECIFICATIONS 50Ω @ +25°C | | | | | |
|---------------------------------------|---------------|------|------|------|-------|
| Parameter | | Min. | Typ. | Max. | Units |
| Frequency | LO (fL to fU) | 800 | | 2000 | MHz |
| | RF (fL to fU) | 800 | | 2000 | MHz |
| | IF | 0.1 | | 300 | MHz |
| Conversion Loss | | | 7.6 | | dB |
| LO-RF Isolation | | | 25 | | dB |
| LO-IF Isolation | | | 15 | | dB |

| MAXIMUM RATINGS | |
|-----------------------|----------------|
| Operating Temperature | -40°C to 85°C |
| Storage Temperature | -55°C to 100°C |

| PIN CONNECTIONS | |
|-----------------|---------------|
| LO | 10 |
| RF | 5 |
| IF | 3 |
| GROUND | 1, 4, 7, 8, 9 |
| ISOLATE | 2, 6 |

Frequency Mixer

MBA-EE7756/6

Typical Performance Data

| RF (IN) (MHz) | LO (MHz) | CONVERSION LOSS IF FIXED @IF(OUT)=30MHz (dB) | | | RF (IN) (MHz) | LO (MHz) | IP3 INPUT (dBm) | | | RF (IN) (MHz) | LO (MHz) | COMPRESSION @RF IN=+1dBm (dB) | | |
|---------------|----------|--|-------|-------|---------------|----------|-----------------|-------|-------|---------------|----------|-------------------------------|-------|-------|
| | | @LO (dBm) | | | | | @LO (dBm) | | | | | @LO (dBm) | | |
| | | +4 | +7 | +10 | | | +4 | +7 | +10 | | | +4 | +7 | +10 |
| 550.0 | 580.0 | 13.27 | 10.53 | 10.07 | 550.0 | 580.0 | 5.86 | 4.99 | 9.44 | 550.0 | 580.0 | -0.49 | 0.44 | 0.25 |
| 650.0 | 680.0 | 10.70 | 9.60 | 9.04 | 650.0 | 680.0 | 3.43 | 8.43 | 14.83 | 650.0 | 680.0 | 0.39 | 0.19 | 0.15 |
| 750.0 | 780.0 | 9.36 | 8.16 | 7.64 | 750.0 | 780.0 | 7.61 | 13.20 | 13.17 | 750.0 | 780.0 | 0.59 | 0.65 | 0.62 |
| 850.0 | 880.0 | 8.04 | 7.05 | 6.56 | 850.0 | 880.0 | 8.22 | 10.20 | 11.35 | 850.0 | 880.0 | 1.18 | 1.19 | 1.11 |
| 950.0 | 980.0 | 7.74 | 6.74 | 6.21 | 950.0 | 980.0 | 5.92 | 8.71 | 10.67 | 950.0 | 980.0 | 1.25 | 1.37 | 1.33 |
| 1050.0 | 1080.0 | 7.40 | 6.63 | 6.28 | 1050.0 | 1080.0 | 6.07 | 9.72 | 11.73 | 1050.0 | 1080.0 | 1.41 | 1.32 | 1.18 |
| 1150.0 | 1180.0 | 7.17 | 6.69 | 6.48 | 1150.0 | 1180.0 | 8.14 | 10.14 | 11.49 | 1150.0 | 1180.0 | 1.63 | 1.27 | 1.07 |
| 1250.0 | 1280.0 | 7.26 | 6.90 | 6.75 | 1250.0 | 1280.0 | 9.38 | 11.09 | 12.24 | 1250.0 | 1280.0 | 1.59 | 1.19 | 0.98 |
| 1350.0 | 1380.0 | 7.55 | 7.17 | 7.00 | 1350.0 | 1380.0 | 9.93 | 10.98 | 12.30 | 1350.0 | 1380.0 | 1.40 | 1.02 | 0.79 |
| 1450.0 | 1480.0 | 7.76 | 7.49 | 7.35 | 1450.0 | 1480.0 | 9.56 | 9.97 | 11.30 | 1450.0 | 1480.0 | 1.44 | 1.02 | 0.74 |
| 1550.0 | 1580.0 | 7.81 | 7.61 | 7.54 | 1550.0 | 1580.0 | 10.72 | 11.36 | 12.04 | 1550.0 | 1580.0 | 1.28 | 0.86 | 0.61 |
| 1650.0 | 1680.0 | 7.50 | 7.25 | 7.19 | 1650.0 | 1680.0 | 11.12 | 11.16 | 11.23 | 1650.0 | 1680.0 | 1.16 | 0.91 | 0.76 |
| 1750.0 | 1780.0 | 7.62 | 7.33 | 7.22 | 1750.0 | 1780.0 | 12.55 | 12.65 | 12.40 | 1750.0 | 1780.0 | 0.72 | 0.57 | 0.49 |
| 1850.0 | 1880.0 | 7.49 | 7.19 | 7.07 | 1850.0 | 1880.0 | 11.71 | 12.85 | 13.53 | 1850.0 | 1880.0 | 0.67 | 0.44 | 0.35 |
| 1950.0 | 1980.0 | 7.78 | 7.46 | 7.34 | 1950.0 | 1980.0 | 12.18 | 13.24 | 14.10 | 1950.0 | 1980.0 | 0.83 | 0.62 | 0.51 |
| 2050.0 | 2080.0 | 7.65 | 7.28 | 7.14 | 2050.0 | 2080.0 | 11.62 | 12.28 | 12.94 | 2050.0 | 2080.0 | 0.68 | 0.54 | 0.45 |
| 2150.0 | 2180.0 | 7.68 | 7.35 | 7.22 | 2150.0 | 2180.0 | 12.38 | 13.74 | 14.81 | 2150.0 | 2180.0 | 0.75 | 0.57 | 0.47 |
| 2250.0 | 2280.0 | 7.90 | 7.53 | 7.38 | 2250.0 | 2280.0 | 12.91 | 13.55 | 14.54 | 2250.0 | 2280.0 | 0.57 | 0.43 | 0.35 |
| 2350.0 | 2380.0 | 7.71 | 7.27 | 7.14 | 2350.0 | 2380.0 | 11.56 | 13.00 | 13.84 | 2350.0 | 2380.0 | 0.80 | 0.64 | 0.54 |
| 2450.0 | 2480.0 | 8.34 | 7.93 | 7.82 | 2450.0 | 2480.0 | 10.38 | 12.66 | 14.36 | 2450.0 | 2480.0 | 0.38 | 0.22 | 0.15 |
| 2550.0 | 2580.0 | 8.67 | 8.12 | 7.89 | 2550.0 | 2580.0 | 7.73 | 7.90 | 7.79 | 2550.0 | 2580.0 | 0.07 | -0.08 | -0.11 |
| 2650.0 | 2680.0 | 8.00 | 7.48 | 7.28 | 2650.0 | 2680.0 | 6.67 | 7.15 | 7.60 | 2650.0 | 2680.0 | 0.55 | 0.31 | 0.22 |
| 2750.0 | 2780.0 | 7.42 | 6.87 | 6.68 | 2750.0 | 2780.0 | 7.51 | 8.30 | 9.09 | 2750.0 | 2780.0 | 0.74 | 0.43 | 0.33 |
| 2850.0 | 2880.0 | 7.74 | 7.16 | 6.97 | 2850.0 | 2880.0 | 8.53 | 8.84 | 9.60 | 2850.0 | 2880.0 | 0.73 | 0.44 | 0.30 |
| 2950.0 | 2980.0 | 7.26 | 6.64 | 6.40 | 2950.0 | 2980.0 | 6.90 | 7.67 | 8.73 | 2950.0 | 2980.0 | 1.07 | 0.78 | 0.61 |
| 3050.0 | 3080.0 | 6.72 | 6.18 | 5.99 | 3050.0 | 3080.0 | 6.79 | 8.06 | 9.29 | 3050.0 | 3080.0 | 1.19 | 0.95 | 0.75 |
| 3150.0 | 3180.0 | 6.33 | 5.86 | 5.69 | 3150.0 | 3180.0 | 7.12 | 8.56 | 9.80 | 3150.0 | 3180.0 | 1.30 | 0.97 | 0.81 |
| 3250.0 | 3280.0 | 6.04 | 5.63 | 5.49 | 3250.0 | 3280.0 | 8.21 | 9.35 | 10.46 | 3250.0 | 3280.0 | 1.28 | 0.99 | 0.83 |
| 3350.0 | 3380.0 | 5.94 | 5.60 | 5.48 | 3350.0 | 3380.0 | 8.89 | 9.80 | 10.71 | 3350.0 | 3380.0 | 1.27 | 0.97 | 0.86 |
| 3450.0 | 3480.0 | 5.98 | 5.70 | 5.59 | 3450.0 | 3480.0 | 9.53 | 10.12 | 11.01 | 3450.0 | 3480.0 | 1.24 | 0.99 | 0.92 |
| 3550.0 | 3580.0 | 6.17 | 5.94 | 5.88 | 3550.0 | 3580.0 | 10.91 | 11.59 | 11.67 | 3550.0 | 3580.0 | 1.09 | 0.91 | 0.94 |
| 3650.0 | 3680.0 | 6.62 | 6.47 | 6.56 | 3650.0 | 3680.0 | 11.84 | 12.02 | 9.79 | 3650.0 | 3680.0 | 1.12 | 0.96 | 1.09 |
| 3730.0 | 3760.0 | 7.48 | 7.36 | 7.80 | 3730.0 | 3760.0 | 11.45 | 10.84 | 10.27 | 3730.0 | 3760.0 | 1.09 | 0.97 | 0.99 |
| 3830.0 | 3860.0 | 8.25 | 7.77 | 7.59 | 3830.0 | 3860.0 | 11.35 | 12.98 | 10.95 | 3830.0 | 3860.0 | 0.72 | 0.81 | 1.28 |
| 3910.0 | 3940.0 | 7.84 | 7.37 | 7.17 | 3910.0 | 3940.0 | 10.97 | 12.44 | 12.43 | 3910.0 | 3940.0 | 0.69 | 0.70 | 0.99 |
| 4010.0 | 4040.0 | 7.76 | 7.35 | 7.19 | 4010.0 | 4040.0 | 10.17 | 11.58 | 12.08 | 4010.0 | 4040.0 | 0.64 | 0.61 | 0.78 |
| 4090.0 | 4120.0 | 7.76 | 7.39 | 7.29 | 4090.0 | 4120.0 | 10.08 | 11.70 | 12.63 | 4090.0 | 4120.0 | 0.50 | 0.45 | 0.54 |
| 4190.0 | 4220.0 | 8.07 | 7.69 | 7.61 | 4190.0 | 4220.0 | 10.62 | 11.61 | 13.03 | 4190.0 | 4220.0 | 0.40 | 0.32 | 0.35 |
| 4270.0 | 4300.0 | 8.38 | 8.04 | 7.99 | 4270.0 | 4300.0 | 11.52 | 11.94 | 13.58 | 4270.0 | 4300.0 | 0.42 | 0.33 | 0.34 |
| 4370.0 | 4400.0 | 8.55 | 8.19 | 8.20 | 4370.0 | 4400.0 | 12.75 | 12.81 | 13.92 | 4370.0 | 4400.0 | 0.51 | 0.39 | 0.35 |



Frequency Mixer

MBA-EE7756/6

Typical Performance Data

| IF (OUT) (MHz) | LO (MHz) | CONVERSION LOSS VS. IF FREQUENCY @RF(IN)=900MHz (dB) | IF (OUT) (MHz) | LO (MHz) | CONVERSION LOSS VS. IF FREQUENCY @RF(IN)=789.9MHz (dB) | IF (OUT) (MHz) | LO (MHz) | CONVERSION LOSS VS. IF FREQUENCY @RF(IN)=1010.1MHz (dB) |
|----------------|----------|--|----------------|----------|--|----------------|----------|---|
| | | @LO (dBm) | | | @LO (dBm) | | | @LO (dBm) |
| | | +7 | | | +7 | | | +7 |
| 370.0 | 530.0 | 10.62 | 10.1 | 800.0 | 7.75 | 450.1 | 560.0 | 10.46 |
| 348.8 | 551.2 | 10.28 | 30.1 | 820.0 | 7.66 | 440.1 | 570.0 | 9.96 |
| 327.6 | 572.4 | 9.78 | 50.1 | 840.0 | 7.73 | 430.1 | 580.0 | 9.32 |
| 306.5 | 593.5 | 9.40 | 70.1 | 860.0 | 7.66 | 420.1 | 590.0 | 9.03 |
| 285.3 | 614.7 | 9.25 | 90.1 | 880.0 | 7.66 | 410.1 | 600.0 | 8.81 |
| 264.1 | 635.9 | 8.98 | 110.1 | 900.0 | 7.68 | 400.1 | 610.0 | 8.67 |
| 242.9 | 657.1 | 8.63 | 130.1 | 920.0 | 7.67 | 390.1 | 620.0 | 8.67 |
| 221.8 | 678.2 | 7.98 | 150.1 | 940.0 | 7.61 | 380.1 | 630.0 | 8.71 |
| 200.6 | 699.4 | 7.43 | 170.1 | 960.0 | 7.72 | 370.1 | 640.0 | 8.53 |
| 179.4 | 720.6 | 7.10 | 190.1 | 980.0 | 7.70 | 360.1 | 650.0 | 8.48 |
| 158.2 | 741.8 | 6.85 | 210.1 | 1000.0 | 7.86 | 350.1 | 660.0 | 8.36 |
| 137.1 | 762.9 | 6.64 | 230.1 | 1020.0 | 8.00 | 340.1 | 670.0 | 8.13 |
| 115.9 | 784.1 | 6.59 | 250.1 | 1040.0 | 7.82 | 330.1 | 680.0 | 7.94 |
| 94.7 | 805.3 | 6.64 | 270.1 | 1060.0 | 7.85 | 320.1 | 690.0 | 7.87 |
| 73.5 | 826.5 | 6.59 | 290.1 | 1080.0 | 7.79 | 310.1 | 700.0 | 7.53 |
| 52.4 | 847.6 | 6.73 | 310.1 | 1100.0 | 7.75 | 300.1 | 710.0 | 7.40 |
| 31.2 | 868.8 | 6.75 | 330.1 | 1120.0 | 7.83 | 290.1 | 720.0 | 7.26 |
| 10.0 | 890.0 | 6.99 | 350.1 | 1140.0 | 7.85 | 280.1 | 730.0 | 7.08 |
| 39.4 | 939.4 | 6.82 | 390.1 | 1180.0 | 7.90 | 270.1 | 740.0 | 6.90 |
| 98.2 | 998.2 | 6.95 | 410.1 | 1200.0 | 7.86 | 260.1 | 750.0 | 6.79 |
| 157.1 | 1057.1 | 6.84 | 450.1 | 1240.0 | 7.93 | 250.1 | 760.0 | 6.71 |
| 215.9 | 1115.9 | 6.94 | 470.1 | 1260.0 | 7.92 | 240.1 | 770.0 | 6.59 |
| 274.7 | 1174.7 | 7.05 | 510.1 | 1300.0 | 7.88 | 230.1 | 780.0 | 6.54 |
| 304.1 | 1204.1 | 7.02 | 530.1 | 1320.0 | 7.89 | 220.1 | 790.0 | 6.50 |
| 362.9 | 1262.9 | 7.07 | 570.1 | 1360.0 | 7.92 | 210.1 | 800.0 | 6.50 |
| 392.4 | 1292.4 | 7.04 | 590.1 | 1380.0 | 8.03 | 200.1 | 810.0 | 6.50 |
| 451.2 | 1351.2 | 7.07 | 630.1 | 1420.0 | 8.15 | 190.1 | 820.0 | 6.52 |
| 480.6 | 1380.6 | 7.20 | 650.1 | 1440.0 | 8.08 | 180.1 | 830.0 | 6.50 |
| 539.4 | 1439.4 | 7.39 | 690.1 | 1480.0 | 8.11 | 170.1 | 840.0 | 6.51 |
| 568.8 | 1468.8 | 7.42 | 710.1 | 1500.0 | 8.14 | 160.1 | 850.0 | 6.51 |
| 627.6 | 1527.6 | 7.40 | 750.1 | 1540.0 | 8.23 | 140.1 | 870.0 | 6.59 |
| 657.1 | 1557.1 | 7.36 | 770.1 | 1560.0 | 8.24 | 130.1 | 880.0 | 6.58 |
| 715.9 | 1615.9 | 7.64 | 810.1 | 1600.0 | 8.38 | 110.1 | 900.0 | 6.70 |
| 745.3 | 1645.3 | 7.56 | 830.1 | 1620.0 | 8.60 | 100.1 | 910.0 | 6.72 |
| 804.1 | 1704.1 | 8.08 | 870.1 | 1660.0 | 8.94 | 80.1 | 930.0 | 6.86 |
| 833.5 | 1733.5 | 8.27 | 890.1 | 1680.0 | 9.15 | 70.1 | 940.0 | 6.81 |
| 892.4 | 1792.4 | 8.71 | 930.1 | 1720.0 | 9.56 | 50.1 | 960.0 | 6.93 |
| 921.8 | 1821.8 | 9.13 | 950.1 | 1740.0 | 9.66 | 40.1 | 970.0 | 6.83 |
| 980.6 | 1880.6 | 9.95 | 990.1 | 1780.0 | 10.23 | 20.1 | 990.0 | 6.92 |
| 1010.0 | 1910.0 | 10.44 | 1010.1 | 1800.0 | 10.60 | 10.1 | 1000.0 | 6.83 |

REV. X3
MBA-EE7756/6
101012
Page 2 of 5



IF/RF MICROWAVE COMPONENTS • ISO 9001 ISO 14001 AS 9100 CERTIFIED • RoHS compliant
P.O. Box 350166, Brooklyn, New York 11235-0006 (718) 934-4500 Fax (718) 332-4661



The Design Engineers Search Engine finds the model you need, instantly • For detailed performance specs & shopping online see



Frequency Mixer

MBA-EE7756/6

Typical Performance Data

| LO (MHz) | LO-RF ISOLATION (dB) | | | LO-IF ISOLATION (dB) | | |
|-------------|-------------------------|-------|-------|-------------------------|-------|-------|
| | @LO (dBm) | | | @LO (dBm) | | |
| | +4 | +7 | +10 | +4 | +7 | +10 |
| 580.0 | 31.74 | 33.02 | 33.39 | 20.15 | 19.87 | 19.98 |
| 680.0 | 28.57 | 29.37 | 28.88 | 19.78 | 18.86 | 18.89 |
| 780.0 | 26.90 | 27.38 | 26.35 | 19.05 | 18.08 | 17.90 |
| 880.0 | 26.54 | 25.76 | 24.62 | 18.71 | 17.97 | 17.57 |
| 980.0 | 26.61 | 25.30 | 23.90 | 18.20 | 18.14 | 17.53 |
| 1080.0 | 27.50 | 25.81 | 24.37 | 16.66 | 17.51 | 17.82 |
| 1180.0 | 28.70 | 26.66 | 25.15 | 14.59 | 16.06 | 17.48 |
| 1280.0 | 29.38 | 27.45 | 26.02 | 13.06 | 14.86 | 16.78 |
| 1380.0 | 29.49 | 28.06 | 27.19 | 12.04 | 13.86 | 15.83 |
| 1480.0 | 29.03 | 28.46 | 28.03 | 11.40 | 13.15 | 14.81 |
| 1580.0 | 28.87 | 28.84 | 28.93 | 10.88 | 12.48 | 13.83 |
| 1680.0 | 27.99 | 28.15 | 28.65 | 10.87 | 12.25 | 13.25 |
| 1780.0 | 28.85 | 29.61 | 30.01 | 11.16 | 12.27 | 12.80 |
| 1880.0 | 29.21 | 29.60 | 30.10 | 11.76 | 12.24 | 12.36 |
| 1980.0 | 31.94 | 32.29 | 32.53 | 12.48 | 12.49 | 12.17 |
| 2080.0 | 34.03 | 34.16 | 33.88 | 13.26 | 12.71 | 12.04 |
| 2180.0 | 39.62 | 38.07 | 36.48 | 13.94 | 12.71 | 11.73 |
| 2280.0 | 46.41 | 43.14 | 39.30 | 14.96 | 13.17 | 11.83 |
| 2380.0 | 40.72 | 46.58 | 42.43 | 15.62 | 13.23 | 11.86 |
| 2480.0 | 32.33 | 36.86 | 44.63 | 15.83 | 13.51 | 11.90 |
| 2580.0 | 31.08 | 35.22 | 44.21 | 15.75 | 13.76 | 12.23 |
| 2680.0 | 33.22 | 40.19 | 51.06 | 15.35 | 13.77 | 12.61 |
| 2780.0 | 35.12 | 52.61 | 38.94 | 14.98 | 14.04 | 13.25 |
| 2880.0 | 32.15 | 40.45 | 43.11 | 14.61 | 14.30 | 13.66 |
| 2980.0 | 32.58 | 41.84 | 38.09 | 14.25 | 14.72 | 14.66 |
| 3080.0 | 36.46 | 45.73 | 35.39 | 13.99 | 14.86 | 15.73 |
| 3180.0 | 42.95 | 36.80 | 30.60 | 13.86 | 15.22 | 16.65 |
| 3280.0 | 37.50 | 31.29 | 27.69 | 13.85 | 15.39 | 17.12 |
| 3380.0 | 31.78 | 27.70 | 25.41 | 14.03 | 15.60 | 17.20 |
| 3480.0 | 27.53 | 25.31 | 23.39 | 14.21 | 15.51 | 16.47 |
| 3580.0 | 23.99 | 22.54 | 21.28 | 14.04 | 14.75 | 15.06 |
| 3680.0 | 20.93 | 20.00 | 19.26 | 13.11 | 13.15 | 12.97 |
| 3760.0 | 19.49 | 19.10 | 19.15 | 11.49 | 11.28 | 11.05 |
| 3860.0 | 19.23 | 19.76 | 20.03 | 9.90 | 10.30 | 10.62 |
| 3940.0 | 21.07 | 21.00 | 20.13 | 10.93 | 11.84 | 12.47 |
| 4040.0 | 25.05 | 24.20 | 22.96 | 13.19 | 14.28 | 15.27 |
| 4120.0 | 27.52 | 26.06 | 24.65 | 14.90 | 16.02 | 17.17 |
| 4220.0 | 29.08 | 27.73 | 26.34 | 17.22 | 18.36 | 19.50 |
| 4300.0 | 28.65 | 27.72 | 26.31 | 19.22 | 20.70 | 22.12 |
| 4400.0 | 27.37 | 26.43 | 25.35 | 23.20 | 25.64 | 28.91 |

| RF (IN) (MHz) | LO (MHz) | RF-IF ISOLATION (dB) | | |
|---------------------|-------------|-------------------------|-------|-------|
| | | @LO (dBm) | | |
| | | +4 | +7 | +10 |
| 550.0 | 580.0 | 26.09 | 19.10 | 15.94 |
| 650.0 | 680.0 | 19.47 | 15.96 | 14.25 |
| 750.0 | 780.0 | 18.61 | 16.39 | 15.10 |
| 850.0 | 880.0 | 19.46 | 17.93 | 17.07 |
| 950.0 | 980.0 | 20.92 | 19.92 | 19.22 |
| 1050.0 | 1080.0 | 22.25 | 22.39 | 22.47 |
| 1150.0 | 1180.0 | 23.51 | 24.94 | 25.78 |
| 1250.0 | 1280.0 | 24.37 | 26.21 | 27.65 |
| 1350.0 | 1380.0 | 24.61 | 26.87 | 28.44 |
| 1450.0 | 1480.0 | 24.82 | 26.82 | 28.33 |
| 1550.0 | 1580.0 | 26.61 | 28.34 | 29.32 |
| 1650.0 | 1680.0 | 27.98 | 29.52 | 30.30 |
| 1750.0 | 1780.0 | 28.52 | 29.34 | 29.94 |
| 1850.0 | 1880.0 | 27.83 | 27.83 | 27.83 |
| 1950.0 | 1980.0 | 27.14 | 27.06 | 26.99 |
| 2050.0 | 2080.0 | 27.06 | 26.98 | 27.04 |
| 2150.0 | 2180.0 | 26.48 | 26.40 | 26.31 |
| 2250.0 | 2280.0 | 26.43 | 26.43 | 26.41 |
| 2350.0 | 2380.0 | 26.58 | 26.58 | 26.66 |
| 2450.0 | 2480.0 | 25.76 | 25.94 | 25.99 |
| 2550.0 | 2580.0 | 25.95 | 26.15 | 26.13 |
| 2650.0 | 2680.0 | 27.29 | 27.32 | 27.26 |
| 2750.0 | 2780.0 | 27.84 | 27.61 | 27.30 |
| 2850.0 | 2880.0 | 27.87 | 27.39 | 26.82 |
| 2950.0 | 2980.0 | 28.92 | 27.97 | 27.05 |
| 3050.0 | 3080.0 | 29.03 | 27.81 | 26.77 |
| 3150.0 | 3180.0 | 27.99 | 26.81 | 25.93 |
| 3250.0 | 3280.0 | 27.39 | 26.23 | 25.38 |
| 3350.0 | 3380.0 | 25.77 | 24.98 | 24.37 |
| 3450.0 | 3480.0 | 24.02 | 23.45 | 23.05 |
| 3550.0 | 3580.0 | 21.65 | 21.42 | 21.15 |
| 3650.0 | 3680.0 | 18.80 | 18.72 | 18.53 |
| 3730.0 | 3760.0 | 16.64 | 16.68 | 16.65 |
| 3830.0 | 3860.0 | 14.14 | 14.58 | 15.07 |
| 3910.0 | 3940.0 | 14.08 | 14.35 | 14.65 |
| 4010.0 | 4040.0 | 15.39 | 15.13 | 15.00 |
| 4090.0 | 4120.0 | 15.92 | 15.17 | 14.66 |
| 4190.0 | 4220.0 | 15.80 | 14.41 | 13.58 |
| 4270.0 | 4300.0 | 16.17 | 14.69 | 13.66 |
| 4370.0 | 4400.0 | 16.78 | 15.51 | 14.52 |



Frequency Mixer

MBA-EE7756/6

Typical Performance Data

| RF (IN) (MHz) | LO (MHz) | RF VSWR (:1) | | |
|---------------|----------|--------------|------|------|
| | | @LO (dBm) | | |
| | | +4 | +7 | +10 |
| 550.0 | 580.0 | 6.66 | 5.68 | 5.47 |
| 650.0 | 680.0 | 5.20 | 4.75 | 4.42 |
| 750.0 | 780.0 | 4.17 | 3.70 | 3.42 |
| 850.0 | 880.0 | 3.41 | 3.05 | 2.79 |
| 950.0 | 980.0 | 3.27 | 2.95 | 2.73 |
| 1050.0 | 1080.0 | 3.17 | 2.90 | 2.75 |
| 1150.0 | 1180.0 | 3.18 | 2.99 | 2.88 |
| 1250.0 | 1280.0 | 3.35 | 3.18 | 3.07 |
| 1350.0 | 1380.0 | 3.53 | 3.38 | 3.26 |
| 1450.0 | 1480.0 | 3.47 | 3.39 | 3.37 |
| 1550.0 | 1580.0 | 3.23 | 3.14 | 3.13 |
| 1650.0 | 1680.0 | 3.21 | 2.98 | 2.88 |
| 1750.0 | 1780.0 | 3.29 | 3.00 | 2.80 |
| 1850.0 | 1880.0 | 3.06 | 2.78 | 2.58 |
| 1950.0 | 1980.0 | 3.17 | 2.92 | 2.73 |
| 2050.0 | 2080.0 | 3.09 | 2.80 | 2.57 |
| 2150.0 | 2180.0 | 3.00 | 2.77 | 2.59 |
| 2250.0 | 2280.0 | 3.08 | 2.85 | 2.69 |
| 2350.0 | 2380.0 | 2.74 | 2.51 | 2.37 |
| 2450.0 | 2480.0 | 2.69 | 2.47 | 2.34 |
| 2550.0 | 2580.0 | 3.47 | 3.08 | 2.82 |
| 2650.0 | 2680.0 | 3.30 | 2.88 | 2.65 |
| 2750.0 | 2780.0 | 2.75 | 2.34 | 2.13 |
| 2850.0 | 2880.0 | 2.84 | 2.49 | 2.30 |
| 2950.0 | 2980.0 | 2.50 | 2.18 | 1.98 |
| 3050.0 | 3080.0 | 2.07 | 1.80 | 1.64 |
| 3150.0 | 3180.0 | 1.68 | 1.46 | 1.34 |
| 3250.0 | 3280.0 | 1.45 | 1.26 | 1.15 |
| 3350.0 | 3380.0 | 1.36 | 1.23 | 1.17 |
| 3450.0 | 3480.0 | 1.42 | 1.34 | 1.33 |
| 3550.0 | 3580.0 | 1.58 | 1.54 | 1.54 |
| 3650.0 | 3680.0 | 1.73 | 1.67 | 1.68 |
| 3730.0 | 3760.0 | 1.91 | 1.81 | 1.83 |
| 3830.0 | 3860.0 | 2.18 | 2.13 | 2.14 |
| 3910.0 | 3940.0 | 2.30 | 2.21 | 2.14 |
| 4010.0 | 4040.0 | 2.82 | 2.63 | 2.50 |
| 4090.0 | 4120.0 | 3.14 | 2.88 | 2.73 |
| 4190.0 | 4220.0 | 3.52 | 3.14 | 2.95 |
| 4270.0 | 4300.0 | 3.94 | 3.52 | 3.27 |
| 4370.0 | 4400.0 | 4.07 | 3.60 | 3.34 |

| LO (MHz) | LO VSWR (:1) | | |
|----------|--------------|------|------|
| | @LO (dBm) | | |
| | +4 | +7 | +10 |
| 580.0 | 13.49 | 9.38 | 6.66 |
| 680.0 | 6.66 | 4.59 | 4.14 |
| 780.0 | 3.32 | 2.71 | 2.88 |
| 880.0 | 2.27 | 2.00 | 2.28 |
| 980.0 | 2.06 | 1.75 | 1.97 |
| 1080.0 | 2.21 | 1.75 | 1.86 |
| 1180.0 | 2.35 | 1.80 | 1.89 |
| 1280.0 | 2.29 | 1.83 | 2.01 |
| 1380.0 | 2.11 | 1.82 | 2.12 |
| 1480.0 | 2.00 | 1.91 | 2.29 |
| 1580.0 | 1.87 | 1.90 | 2.36 |
| 1680.0 | 1.56 | 1.77 | 2.33 |
| 1780.0 | 1.30 | 1.70 | 2.30 |
| 1880.0 | 1.17 | 1.67 | 2.27 |
| 1980.0 | 1.26 | 1.67 | 2.21 |
| 2080.0 | 1.44 | 1.70 | 2.17 |
| 2180.0 | 1.56 | 1.64 | 2.01 |
| 2280.0 | 1.89 | 1.74 | 1.95 |
| 2380.0 | 2.07 | 1.71 | 1.79 |
| 2480.0 | 2.31 | 1.73 | 1.65 |
| 2580.0 | 2.52 | 1.76 | 1.52 |
| 2680.0 | 2.63 | 1.75 | 1.39 |
| 2780.0 | 2.75 | 1.73 | 1.24 |
| 2880.0 | 2.78 | 1.71 | 1.15 |
| 2980.0 | 2.75 | 1.69 | 1.22 |
| 3080.0 | 2.64 | 1.69 | 1.40 |
| 3180.0 | 2.54 | 1.78 | 1.69 |
| 3280.0 | 2.14 | 1.72 | 1.87 |
| 3380.0 | 1.84 | 1.76 | 2.09 |
| 3480.0 | 1.64 | 1.83 | 2.28 |
| 3580.0 | 1.50 | 1.85 | 2.34 |
| 3680.0 | 1.38 | 1.77 | 2.20 |
| 3760.0 | 1.25 | 1.57 | 1.89 |
| 3860.0 | 1.20 | 1.38 | 1.66 |
| 3940.0 | 1.55 | 1.66 | 1.94 |
| 4040.0 | 1.90 | 1.89 | 2.13 |
| 4120.0 | 2.18 | 2.01 | 2.16 |
| 4220.0 | 2.44 | 2.06 | 2.04 |
| 4300.0 | 2.60 | 2.01 | 1.83 |
| 4400.0 | 2.69 | 1.88 | 1.52 |

| IF (OUT) (MHz) | IF VSWR @LO=1000MHz (:1) | | |
|----------------|--------------------------|------|------|
| | @LO (dBm) | | |
| | +4 | +7 | +10 |
| 10.0 | 1.09 | 1.40 | 1.66 |
| 30.0 | 1.12 | 1.40 | 1.65 |
| 50.0 | 1.22 | 1.45 | 1.71 |
| 70.0 | 1.29 | 1.47 | 1.71 |
| 90.0 | 1.40 | 1.56 | 1.79 |
| 110.0 | 1.50 | 1.62 | 1.82 |
| 130.0 | 1.61 | 1.73 | 1.93 |
| 150.0 | 1.73 | 1.80 | 1.98 |
| 170.0 | 1.83 | 1.89 | 2.07 |
| 190.0 | 1.97 | 1.99 | 2.15 |
| 210.0 | 2.08 | 2.08 | 2.23 |
| 230.0 | 2.22 | 2.21 | 2.35 |
| 250.0 | 2.29 | 2.25 | 2.37 |
| 270.0 | 2.46 | 2.39 | 2.50 |
| 290.0 | 2.54 | 2.44 | 2.54 |
| 310.0 | 2.68 | 2.57 | 2.67 |
| 330.0 | 2.76 | 2.61 | 2.68 |
| 350.0 | 2.86 | 2.69 | 2.75 |
| 370.0 | 2.98 | 2.74 | 2.77 |
| 390.0 | 3.06 | 2.79 | 2.82 |
| 410.0 | 3.15 | 2.83 | 2.83 |
| 430.0 | 3.20 | 2.84 | 2.82 |
| 450.0 | 3.29 | 2.88 | 2.82 |
| 470.0 | 3.35 | 2.89 | 2.80 |
| 490.0 | 3.43 | 2.93 | 2.81 |
| 510.0 | 3.47 | 2.90 | 2.73 |
| 530.0 | 3.56 | 2.93 | 2.73 |
| 550.0 | 3.59 | 2.90 | 2.65 |
| 590.0 | 3.69 | 2.90 | 2.56 |
| 610.0 | 3.72 | 2.89 | 2.51 |
| 650.0 | 3.79 | 2.86 | 2.40 |
| 670.0 | 3.81 | 2.86 | 2.36 |
| 710.0 | 3.81 | 2.82 | 2.27 |
| 730.0 | 3.79 | 2.79 | 2.23 |
| 770.0 | 3.76 | 2.77 | 2.22 |
| 790.0 | 3.73 | 2.77 | 2.24 |
| 830.0 | 3.60 | 2.76 | 2.33 |
| 850.0 | 3.52 | 2.78 | 2.43 |
| 890.0 | 3.43 | 2.89 | 2.71 |
| 910.0 | 3.42 | 3.02 | 2.95 |



Harmonics Tables

RF HARMONICS ORDER

| | (-dBm) | (-dBc) | | | | | | | | | | |
|----|--------|--------|-----|-----|-----|-----|-----|-----|-----|-----|-----|-----|
| 0 | - | - | +10 | 40 | +1 | 36 | 27 | 40 | 17 | 42 | 37 | 48 |
| 1 | - | 12 | +0 | 21 | 38 | 41 | 51 | 28 | 37 | 41 | 40 | 55 |
| 2 | 90 | 49 | 55 | 55 | 51 | 57 | 48 | >69 | 58 | 54 | 68 | 62 |
| 3 | >90 | >69 | >69 | 58 | 52 | 60 | >69 | >69 | 62 | 64 | 66 | >69 |
| 4 | >90 | >69 | >69 | >69 | >69 | >69 | >69 | >69 | >69 | >69 | >69 | >69 |
| 5 | >90 | >69 | >69 | >69 | >69 | >69 | >69 | >69 | >69 | >69 | >69 | >69 |
| 6 | >90 | >69 | >69 | >69 | >69 | >69 | >69 | >69 | >69 | >69 | >69 | >69 |
| 7 | >90 | >69 | >69 | >69 | >69 | >69 | >69 | >69 | >69 | >69 | >69 | >69 |
| 8 | >90 | >69 | >69 | >69 | >69 | >69 | >69 | >69 | >69 | >69 | >69 | >69 |
| 9 | >90 | >69 | >69 | >69 | >69 | >69 | >69 | >69 | >69 | >69 | >69 | >69 |
| 10 | >90 | >69 | >69 | >69 | >69 | >69 | >69 | >69 | >69 | >69 | >69 | >69 |
| | RF CAL | 0 | 1 | 2 | 3 | 4 | 5 | 6 | 7 | 8 | 9 | 10 |

LO HARMONICS ORDER

Test conditions: RF IN: 900 MHz; -14.00 dBm.
 LO IN: 930 MHz; +7.00 dBm
 IF OUT: 30 MHz; -21.1 dBm

RF HARMONICS ORDER

| | (-dBm) | (-dBc) | | | | | | | | | | |
|----|--------|--------|-----|-----|-----|-----|-----|-----|-----|-----|-----|-----|
| 0 | - | - | +0 | 49 | 10 | 45 | 39 | 48 | 28 | 55 | 44 | 51 |
| 1 | - | 11 | +0 | 24 | 39 | 46 | 41 | 33 | 46 | 44 | 45 | 51 |
| 2 | 70 | 39 | 45 | 42 | 41 | 53 | 41 | 67 | 59 | 54 | 48 | 59 |
| 3 | >90 | 52 | 53 | 43 | 37 | 42 | 58 | 58 | 50 | 50 | 52 | 60 |
| 4 | >90 | 71 | 60 | 69 | 55 | 62 | 59 | 62 | 65 | 73 | 64 | 61 |
| 5 | >90 | 51 | 70 | 73 | 68 | 55 | 48 | 61 | >79 | 79 | 58 | 60 |
| 6 | >90 | >79 | 64 | >79 | 75 | 72 | 64 | 66 | 74 | >79 | 71 | 79 |
| 7 | >90 | >79 | >79 | 76 | >79 | >79 | >79 | 68 | 64 | 70 | >79 | >79 |
| 8 | >90 | >79 | >79 | >79 | >79 | >79 | >79 | >79 | >79 | 74 | >79 | >79 |
| 9 | >90 | >79 | >79 | >79 | >79 | 77 | >79 | >79 | >79 | 74 | 74 | >79 |
| 10 | >90 | >79 | >79 | >79 | >79 | >79 | >79 | >79 | >79 | >79 | >79 | >79 |
| | RF CAL | 0 | 1 | 2 | 3 | 4 | 5 | 6 | 7 | 8 | 9 | 10 |

LO HARMONICS ORDER

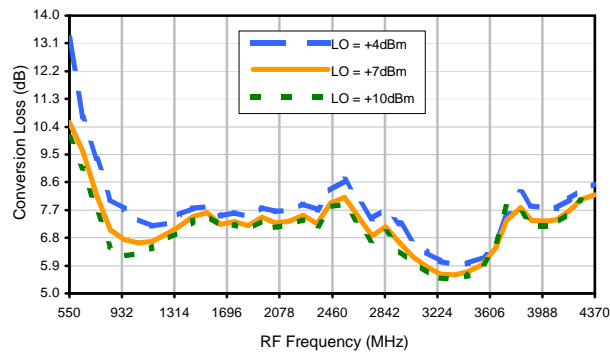
Test conditions: RF IN: 900 MHz; -4.00 dBm.
 LO IN: 930 MHz; +7.00 dBm
 IF OUT: 30 MHz; -11.08 dBm

- Notes: 1. All Harmonics are in (dBc) relative to IF OUTPUT.
 2. + entry denotes harmonics are in (dBc) above IF OUTPUT.
 3. RF Cal represent the Harmonics level of the RF input signal to the mixer.

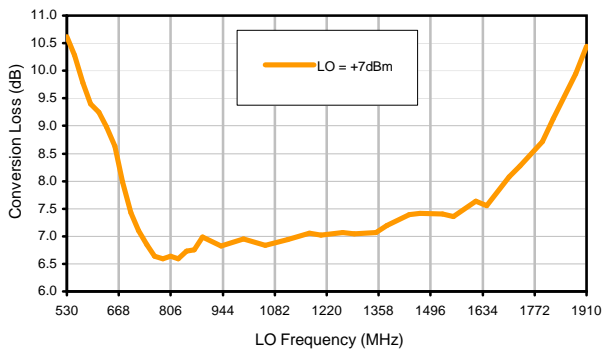


Typical Performance Curves

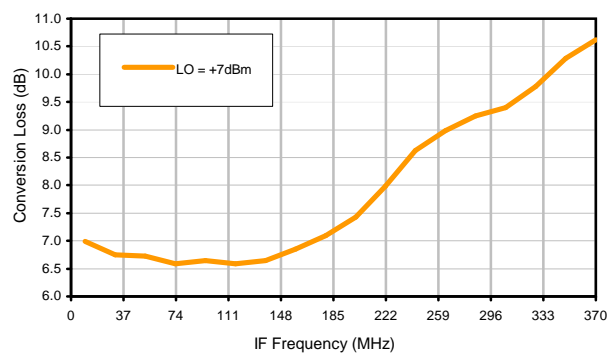
Conversion Loss @ IF=30MHz



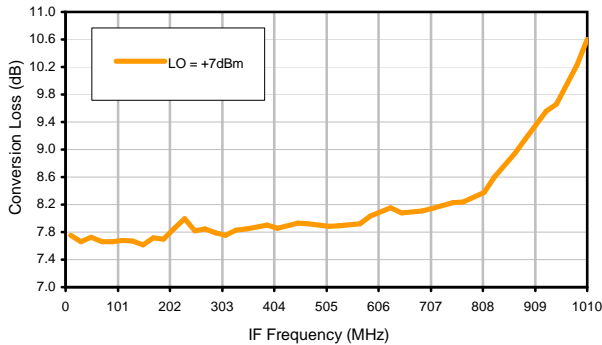
Conversion Loss vs. LO @ RF=900MHz



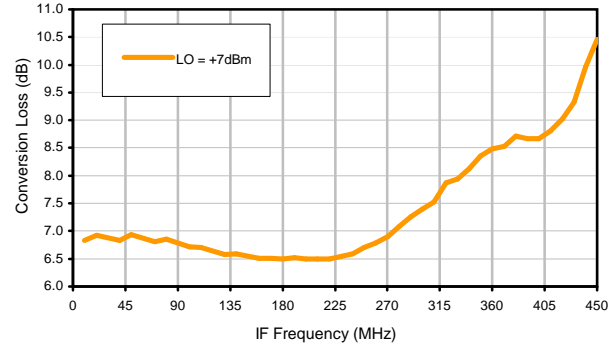
Conversion Loss vs. IF @ RF=900MHz



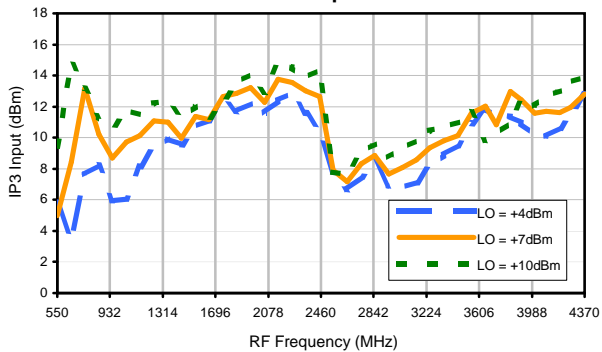
Conversion Loss vs. IF @ RF=789.9MHz



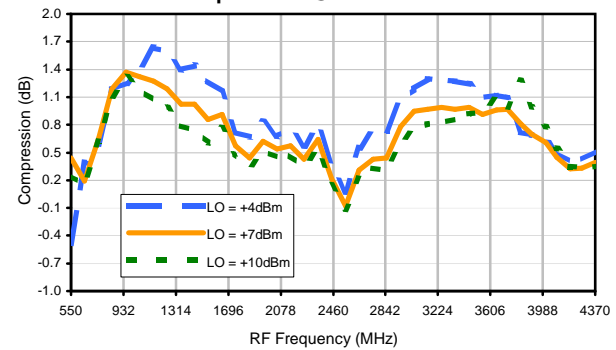
Conversion Loss vs. IF @ RF=1010.1MHz



IP3 Input

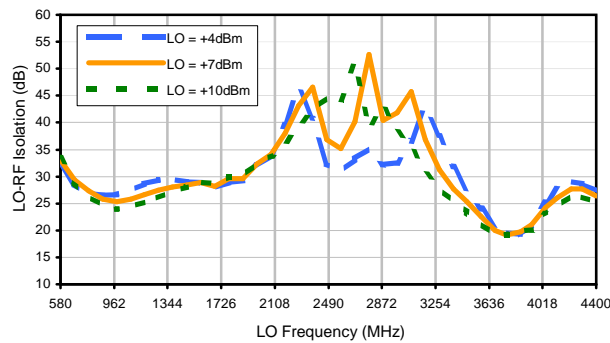


Compression @ RF IN=+1dBm

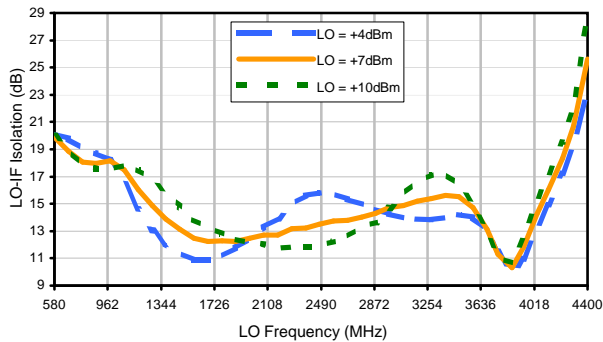


Typical Performance Curves

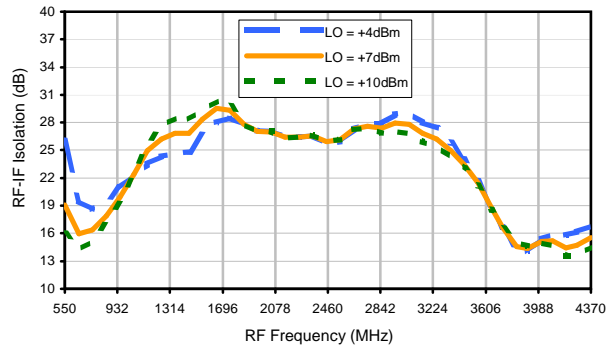
LO-RF Isolation



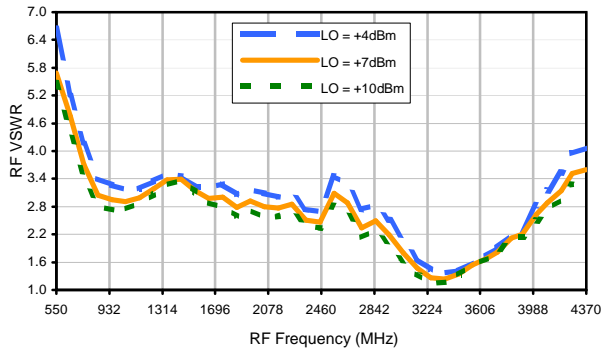
LO-IF Isolation



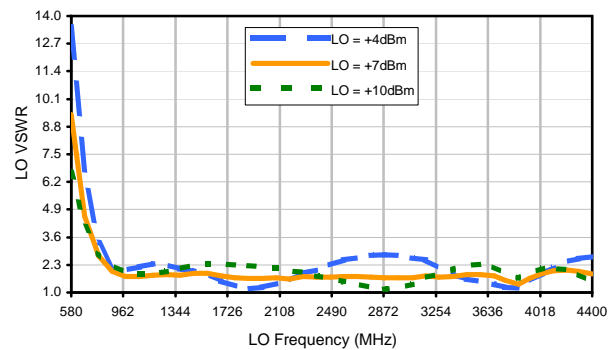
RF-IF Isolation



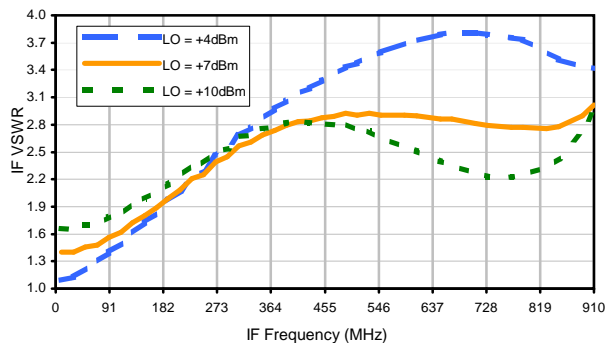
RF VSWR



LO VSWR



IF VSWR



Harmonics Tables

RF HARMONICS ORDER

| | (-dBm) | (-dBc) | | | | | | | | | | |
|----|--------|--------|-----|-----|-----|-----|-----|-----|-----|-----|-----|-----|
| 0 | - | - | +10 | 40 | +1 | 36 | 27 | 40 | 17 | 42 | 37 | 48 |
| 1 | - | 12 | +0 | 21 | 38 | 41 | 51 | 28 | 37 | 41 | 40 | 55 |
| 2 | 90 | 49 | 55 | 55 | 51 | 57 | 48 | >69 | 58 | 54 | 68 | 62 |
| 3 | >90 | >69 | >69 | 58 | 52 | 60 | >69 | >69 | 62 | 64 | 66 | >69 |
| 4 | >90 | >69 | >69 | >69 | >69 | >69 | >69 | >69 | >69 | >69 | >69 | >69 |
| 5 | >90 | >69 | >69 | >69 | >69 | >69 | >69 | >69 | >69 | >69 | >69 | >69 |
| 6 | >90 | >69 | >69 | >69 | >69 | >69 | >69 | >69 | >69 | >69 | >69 | >69 |
| 7 | >90 | >69 | >69 | >69 | >69 | >69 | >69 | >69 | >69 | >69 | >69 | >69 |
| 8 | >90 | >69 | >69 | >69 | >69 | >69 | >69 | >69 | >69 | >69 | >69 | >69 |
| 9 | >90 | >69 | >69 | >69 | >69 | >69 | >69 | >69 | >69 | >69 | >69 | >69 |
| 10 | >90 | >69 | >69 | >69 | >69 | >69 | >69 | >69 | >69 | >69 | >69 | >69 |
| | RF CAL | 0 | 1 | 2 | 3 | 4 | 5 | 6 | 7 | 8 | 9 | 10 |

LO HARMONICS ORDER

Test conditions: RF IN: 900 MHz; -14.00 dBm.
 LO IN: 930 MHz; +7.00 dBm
 IF OUT: 30 MHz; -21.1 dBm

RF HARMONICS ORDER

| | (-dBm) | (-dBc) | | | | | | | | | | |
|----|--------|--------|-----|-----|-----|-----|-----|-----|-----|-----|-----|-----|
| 0 | - | - | +0 | 49 | 10 | 45 | 39 | 48 | 28 | 55 | 44 | 51 |
| 1 | - | 11 | +0 | 24 | 39 | 46 | 41 | 33 | 46 | 44 | 45 | 51 |
| 2 | 70 | 39 | 45 | 42 | 41 | 53 | 41 | 67 | 59 | 54 | 48 | 59 |
| 3 | >90 | 52 | 53 | 43 | 37 | 42 | 58 | 58 | 50 | 50 | 52 | 60 |
| 4 | >90 | 71 | 60 | 69 | 55 | 62 | 59 | 62 | 65 | 73 | 64 | 61 |
| 5 | >90 | 51 | 70 | 73 | 68 | 55 | 48 | 61 | >79 | 79 | 58 | 60 |
| 6 | >90 | >79 | 64 | >79 | 75 | 72 | 64 | 66 | 74 | >79 | 71 | 79 |
| 7 | >90 | >79 | >79 | 76 | >79 | >79 | >79 | 68 | 64 | 70 | >79 | >79 |
| 8 | >90 | >79 | >79 | >79 | >79 | >79 | >79 | >79 | >79 | 74 | >79 | >79 |
| 9 | >90 | >79 | >79 | >79 | >79 | 77 | >79 | >79 | >79 | 74 | 74 | >79 |
| 10 | >90 | >79 | >79 | >79 | >79 | >79 | >79 | >79 | >79 | >79 | >79 | >79 |
| | RF CAL | 0 | 1 | 2 | 3 | 4 | 5 | 6 | 7 | 8 | 9 | 10 |

LO HARMONICS ORDER

Test conditions: RF IN: 900 MHz; -4.00 dBm.
 LO IN: 930 MHz; +7.00 dBm
 IF OUT: 30 MHz; -11.08 dBm

- Notes: 1. All Harmonics are in (dBc) relative to IF OUTPUT.
 2. + entry denotes harmonics are in (dBc) above IF OUTPUT.
 3. RF Cal represent the Harmonics level of the RF input signal to the mixer.

Case Style

SM2

SM2

Outline Dimensions



PCB Land Pattern



Suggested Layout,
Tolerance to be within ± 0.002

ADJACENT GROUND PINS SHALL BE CONNECTED
TO EACH OTHER AND TO GROUND PAD

| CASE # | A | B | C | D | E | F | G | H | J | K | L | M | N | P |
|--------|----------------|----------------|----------------|----------------|----------------|----------------|----------------|----------------|----------------|----------------|----------------|----------------|----------------|----------------|
| SM2 | .250 (6.35) | .300 (7.62) | .095 (2.41) | .290 (7.37) | .050 (1.27) | .015 (0.38) | .050 (1.27) | .060 (1.52) | .030 (0.76) | .080 (2.03) | .300 (7.62) | .100 (2.54) | .020 (0.51) | .015 (0.38) |

| CASE # | Q | R | WT. GRAM |
|--------|----------------|----------------|----------|
| SM2 | .070 (1.78) | .014 (0.36) | .3 |

Dimensions are in inches (mm). Tolerances: $\pm .005$

Notes:

1. Case material: Plastic encapsulation on Ceramic base.
2. Termination finish:
For RoHS Case Styles: Tin plate over Nickel plate.
For RoHS-5 Case Styles: Tin-Lead plate.



INTERNET <http://www.minicircuits.com>

P.O. Box 350166, Brooklyn, New York 11235-0003 (718) 934-4500 Fax (718) 332-4661

Distribution Centers NORTH AMERICA 800-654-7949 • 417-335-5935 • Fax 417-335-5945 • EUROPE 44-1252-832600 • Fax 44-1252-837010

Mini-Circuits ISO 9001 & ISO 14001 Certified

Tape & Reel Packaging TR-F34



| Tape Width, mm | Device Cavity Pitch, mm | Reel Size, inches | Devices per Reel see note | |
|----------------|-------------------------|-------------------|------------------------------------|------|
| 16 | 12 | 7 | Small quantity standard (see note) | 20 |
| | | | | 50 |
| | | | | 100 |
| | | | | 200 |
| | | 13 | Standard | 500 |
| | | | | 1000 |

Note: Availability of small reel quantity varies by model.
Refer to pricing and availability on individual model dashboard.

Mini-Circuits carrier tape materials provide protection from ESD (Electro-Static Discharge) during handling and transportation. Tapes are static dissipative and comply with industry standards EIA-481/EIA-541.

Go to: www.minicircuits.com/pages/pdfs/tape.pdf



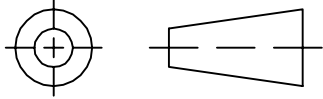
INTERNET <http://www.minicircuits.com>

P.O. Box 350166, Brooklyn, New York 11235-0003 (718) 934-4500 Fax (718) 332-4661

Distribution Centers NORTH AMERICA 800-654-7949 • 417-335-5935 • Fax 417-335-5945 • EUROPE 44-1252-832600 • Fax 44-1252-837010

Mini-Circuits ISO 9001 & ISO 14001 Certified

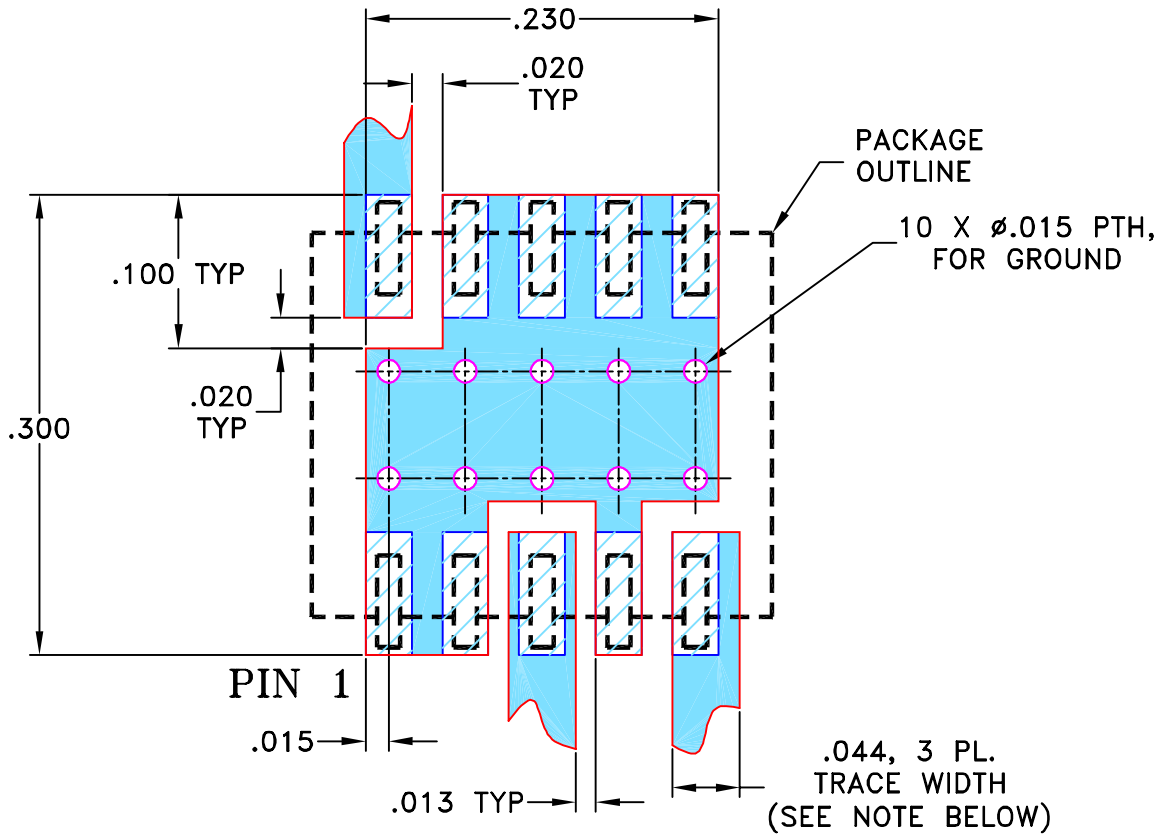
THIRD ANGLE PROJECTION



REVISIONS

| REV | ECN No. | DESCRIPTION | DATE | DR | AUTH |
|-----|---------|--------------------------------------|----------|----|------|
| OR | M82272 | NEW RELEASE | 08/02/02 | GF | DJ |
| A | M102713 | UPDATED NOTES, ADDED "...WITH SMOBC" | 01/16/06 | GT | IL |
| | | | | | |

SUGGESTED MOUNTING CONFIGURATION FOR SM2 CASE STYLE, "Id" PIN CONNECTION



- NOTES: 1. TRACE WIDTH IS SHOWN FOR ROGERS RO4350B WITH DIELECTRIC THICKNESS 0.020" ± 0.0015". COPPER: 1/2 OZ. EACH SIDE. FOR OTHER MATERIALS TRACE WIDTH MAY NEED TO BE MODIFIED.

2. BOTTOM SIDE OF THE PCB IS CONTINUOUS GROUND PLANE.

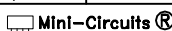
 DENOTES PCB COPPER LAYOUT WITH SMOBC (SOLDER MASK OVER BARE COPPER)

 DENOTES COPPER LAND PATTERN FREE OF SOLDER MASK

| UNLESS OTHERWISE SPECIFIED | INITIALS | DATE |
|----------------------------|-------------|----------|
| DIMENSIONS ARE IN INCHES | DRAWN GF | 07/18/02 |
| TOLERANCES ON: | CHECKED WL | 08/02/02 |
| 2 PL DECIMALS ± | APPROVED DJ | 08/02/02 |
| 3 PL DECIMALS ± .005 | | |
| ANGLES ± | | |
| FRACTIONS ± | | |

 **Mini-Circuits**[®] 13 Neptune Avenue
Brooklyn NY 11235

PL, Id, SM2, MBA, TB-99

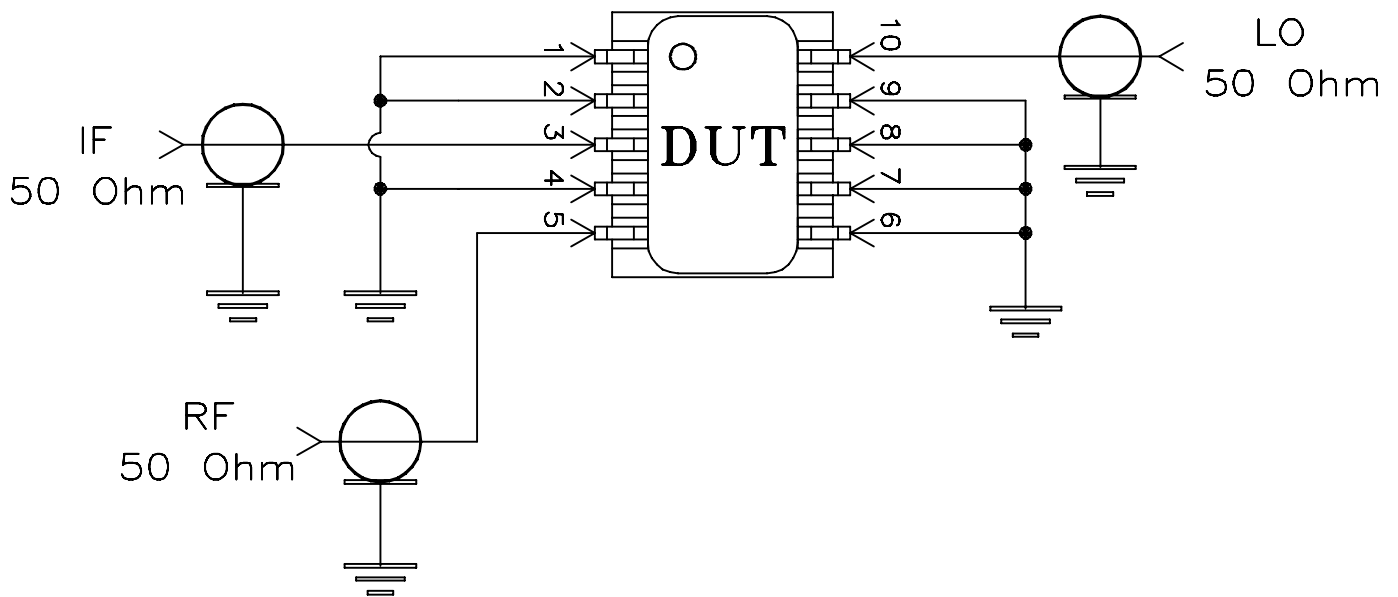
 Mini-Circuits[®]
THIS DOCUMENT AND ITS CONTENTS ARE THE PROPERTY OF MINI-CIRCUITS. EXCEPT FOR USE EXPRESSLY GRANTED, IN WRITING, TO ITS VENDORS, VENDEE AND THE UNITED STATES GOVERNMENT, MINI-CIRCUITS RESERVES ALL PROPRIETARY DESIGN, USE, MANUFACTURING AND REPRODUCTION RIGHTS THERETO. THESE CONTENTS SHALL NOT BE USED, DUPLICATED OR DISCLOSED TO ANY OUTSIDE PARTY, IN WHOLE OR IN PART, WITHOUT WRITTEN PERMISSION OF MINI-CIRCUITS.

| | | | |
|------------------|---------------------|--------------------------|-----------|
| SIZE A | CODE IDENT 15542 | DRAWING NO: 98-PL-066 | REV: A |
| FILE: 98PL066 | SCALE: 8:1 | SHEET: 1 OF 1 | |

Evaluation Board and Circuit



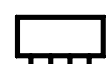
TB-99



Schematic Diagram

Notes:

1. SMA Female connectors.
2. PCB Material: Rogers R04350 or equivalent, Dielectric Constant=3.5, Thickness=.020 inch.

 Mini-Circuits®

All Mini-Circuits products are manufactured under exacting quality assurance and control standards, and are capable of meeting published specifications after being subjected to any or all of the following physical and environmental test.

| Specification | Test/Inspection Condition | Reference/Spec |
|--------------------------------|---|--|
| Operating Temperature | -40° to 85°C Ambient Environment | Individual Model Data Sheet |
| Storage Temperature | -55° to 100° C Ambient Environment | Individual Model Data Sheet |
| Humidity | 90 to 95% RH, 240 hours, 50°C | MIL-STD-202, Method 103, Condition A, Except 50°C and end-point electrical test done within 12 hours |
| Thermal Shock | -55° to 100°C, 100 cycles | MIL-STD-202, Method 107, Condition A-3, except +100°C |
| Solder Reflow Heat | Sn-Pb Eutetic Process: 225°C peak Pb-Free Process 245° - 250°C peak | J-STD-020, Table 4-1, 4-2 and 5-2, Figure 5-1 |
| Solderability | 10X Magnification | J-STD-002, 95% Coverage |
| Vibration (High Frequency) | 20g peak, 10-2000 Hz, 12 times in each of three perpendicular directions (total 36) | MIL-STD-202, Method 204, Condition D |
| Mechanical Shock | 50g, 11 ms, 1/2-sine, 18 shocks: 3 each direction, each of 3 axes | MIL-STD-202, Method 213, Condition A |
| Marking Resistance to Solvents | Isopropyl alcohol + mineral spirits at 25°C; terpene defluxer at 25°C; distilled water + proylene glycol monomethyl ether + monoethanolamine at 63°C to 70°C | MIL-STD-202, Method 215 |