

Engineering Development Model

Frequency Mixer

MBR-EE7756/20

Level 17 (LO Power + 17 dBm)

Important Note

This model has been designed, built and tested in our engineering department. Performance data represents model capability. At present it is a non-catalog model. On request, we can supply a final specification sheet, part number and price/delivery information.



Please click "Back", and then click "Contact Us" for Applications support.

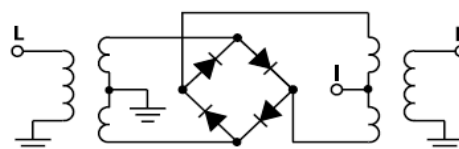
CASE STYLE : SM26

ELECTRICAL SPECIFICATIONS 50Ω @ +25°C					
Parameter		Min.	Typ.	Max.	Units
Frequency	LO (f _L to f _U)	1200		4130	MHz
	RF (f _L to f _U)	1200		4130	MHz
	IF	10		990	MHz
Conversion Loss	Total Range		6		dB
LO-RF Isolation			24		dB
LO-IF Isolation			11		dB
Input IP3			+18		dBm
1 dB Compression			+10		dBm

MAXIMUM RATINGS	
Operating Temperature	-40°C to +85°C
Storage Temperature	-55°C to +100°C

PIN CONNECTIONS	
LO	6
RF	3
IF	2
GROUND	1,4,5

Electrical Schematic



Frequency Mixer

MBR-EE7756/20

Typical Performance Data

RF (IN) (MHz)	LO (MHz)	CONVERSION LOSS IF FIXED @IF(OUT)=30MHz (dB)			RF (IN) (MHz)	LO (MHz)	IP3 INPUT (dBm)			RF (IN) (MHz)	LO (MHz)	COMPRESSION @RF IN=+10dBm (dB)		
		@LO (dBm)					@LO (dBm)					@LO (dBm)		
		+14	+17	+20			+14	+17	+20			+14	+17	+20
920.0	950.0	13.74	10.26	9.69	920.0	950.0	13.23	18.79	22.37	920.0	950.0	-1.11	0.86	1.11
1000.0	1030.0	9.84	8.61	8.33	1000.0	1030.0	17.83	17.43	14.65	1000.0	1030.0	0.96	1.33	1.52
1080.0	1110.0	7.94	7.51	7.49	1080.0	1110.0	15.56	16.31	13.59	1080.0	1110.0	1.84	1.83	1.84
1160.0	1190.0	7.22	7.00	6.86	1160.0	1190.0	15.12	15.77	12.63	1160.0	1190.0	2.01	1.84	1.77
1240.0	1270.0	6.69	6.30	6.08	1240.0	1270.0	17.45	15.65	14.88	1240.0	1270.0	1.86	1.70	1.68
1320.0	1350.0	5.98	5.78	5.70	1320.0	1350.0	17.13	16.13	15.21	1320.0	1350.0	1.75	1.57	1.57
1400.0	1430.0	5.66	5.56	5.51	1400.0	1430.0	14.13	13.62	13.20	1400.0	1430.0	1.78	1.64	1.62
1480.0	1510.0	5.73	5.57	5.49	1480.0	1510.0	18.34	18.10	16.56	1480.0	1510.0	1.73	1.61	1.53
1560.0	1590.0	5.57	5.42	5.36	1560.0	1590.0	13.46	15.90	18.10	1560.0	1590.0	1.60	1.41	1.28
1660.0	1690.0	5.56	5.48	5.46	1660.0	1690.0	17.50	20.74	23.29	1660.0	1690.0	1.36	1.18	1.07
1740.0	1770.0	5.66	5.57	5.56	1740.0	1770.0	20.93	22.42	22.25	1740.0	1770.0	1.21	1.05	0.98
1840.0	1870.0	5.84	5.74	5.73	1840.0	1870.0	23.09	21.39	20.61	1840.0	1870.0	1.12	1.03	1.03
1920.0	1950.0	5.91	5.83	5.84	1920.0	1950.0	23.69	20.46	19.24	1920.0	1950.0	0.94	0.85	0.92
2020.0	2050.0	5.82	5.81	5.88	2020.0	2050.0	24.66	22.94	20.86	2020.0	2050.0	0.67	0.63	0.76
2100.0	2130.0	5.86	5.84	5.88	2100.0	2130.0	23.45	26.16	25.66	2100.0	2130.0	0.55	0.45	0.59
2200.0	2230.0	5.63	5.65	5.71	2200.0	2230.0	25.86	24.87	26.74	2200.0	2230.0	1.17	0.90	0.89
2280.0	2310.0	5.88	5.99	6.17	2280.0	2310.0	17.43	19.29	16.74	2280.0	2310.0	2.31	2.00	1.87
2460.0	2490.0	7.09	6.86	6.78	2460.0	2490.0	17.50	15.21	12.17	2460.0	2490.0	1.70	1.60	1.66
2560.0	2590.0	6.93	6.73	6.64	2560.0	2590.0	16.20	15.31	12.52	2560.0	2590.0	1.68	1.55	1.68
2640.0	2670.0	6.65	6.52	6.46	2640.0	2670.0	16.80	15.37	12.92	2640.0	2670.0	1.69	1.56	1.64
2740.0	2770.0	6.57	6.45	6.44	2740.0	2770.0	16.56	15.47	13.16	2740.0	2770.0	1.53	1.39	1.49
2820.0	2850.0	6.37	6.31	6.30	2820.0	2850.0	17.84	16.08	13.69	2820.0	2850.0	1.47	1.27	1.33
2920.0	2950.0	6.20	6.15	6.18	2920.0	2950.0	17.40	16.86	15.24	2920.0	2950.0	1.41	1.12	1.11
3000.0	3030.0	6.12	6.04	6.07	3000.0	3030.0	17.56	17.79	16.94	3000.0	3030.0	1.52	1.17	1.08
3100.0	3130.0	5.97	5.82	5.84	3100.0	3130.0	17.78	17.15	17.72	3100.0	3130.0	1.52	1.06	0.95
3180.0	3210.0	6.05	5.76	5.71	3180.0	3210.0	19.51	20.50	20.90	3180.0	3210.0	1.59	1.18	1.04
3280.0	3310.0	6.21	5.86	5.76	3280.0	3310.0	19.10	21.56	22.45	3280.0	3310.0	1.67	1.28	1.24
3360.0	3390.0	6.41	6.00	5.82	3360.0	3390.0	18.74	20.33	21.13	3360.0	3390.0	1.79	1.43	1.37
3460.0	3490.0	6.37	5.90	5.78	3460.0	3490.0	18.73	18.58	19.52	3460.0	3490.0	1.92	1.59	1.51
3540.0	3570.0	6.28	5.83	5.78	3540.0	3570.0	18.32	18.54	20.01	3540.0	3570.0	2.10	1.77	1.68
3640.0	3670.0	6.27	5.81	5.69	3640.0	3670.0	18.04	18.58	20.38	3640.0	3670.0	2.26	1.94	1.98
3720.0	3750.0	6.11	5.73	5.64	3720.0	3750.0	17.51	18.36	19.59	3720.0	3750.0	2.41	2.13	2.23
3820.0	3850.0	6.06	5.76	5.69	3820.0	3850.0	17.20	18.20	17.52	3820.0	3850.0	2.55	2.34	2.55
3900.0	3930.0	6.13	5.88	5.81	3900.0	3930.0	17.47	18.14	16.67	3900.0	3930.0	2.56	2.48	2.67
4000.0	4030.0	6.25	6.11	6.13	4000.0	4030.0	17.71	17.93	15.74	4000.0	4030.0	2.48	2.51	2.71
4080.0	4110.0	6.56	6.49	6.60	4080.0	4110.0	18.35	17.69	14.88	4080.0	4110.0	2.57	2.65	2.97
4180.0	4210.0	7.24	7.27	7.78	4180.0	4210.0	16.99	15.31	11.28	4180.0	4210.0	2.67	2.94	3.26
4260.0	4290.0	7.86	8.35	10.36	4260.0	4290.0	14.82	11.77	14.01	4260.0	4290.0	3.15	3.12	1.87
4360.0	4390.0	9.34	10.70	13.11	4360.0	4390.0	12.67	13.36	28.48	4360.0	4390.0	2.83	1.80	0.16



Frequency Mixer

MBR-EE7756/20

Typical Performance Data

IF (OUT) (MHz)	LO (MHz)	CONVERSION LOSS VS. IF FREQUENCY @RF(IN)=1600MHz (dB)	IF (OUT) (MHz)	LO (MHz)	CONVERSION LOSS VS. IF FREQUENCY @RF(IN)=1189.9MHz (dB)	IF (OUT) (MHz)	LO (MHz)	CONVERSION LOSS VS. IF FREQUENCY @RF(IN)=2010.1MHz (dB)
		@LO (dBm)			@LO (dBm)			@LO (dBm)
		+17			+17			+17
830.0	770.0	10.74	10.1	1200.0	7.10	1150.1	860.0	10.41
782.7	817.3	8.85	30.1	1220.0	6.85	1130.1	880.0	9.85
735.4	864.6	7.34	70.1	1260.0	6.84	1110.1	900.0	9.26
688.1	911.9	7.01	90.1	1280.0	6.78	1090.1	920.0	8.86
640.8	959.2	6.70	130.1	1320.0	6.69	1050.1	960.0	7.83
593.5	1006.5	6.27	150.1	1340.0	6.75	1030.1	980.0	7.37
546.2	1053.8	6.01	190.1	1380.0	6.90	990.1	1020.0	6.63
498.8	1101.2	5.83	210.1	1400.0	6.93	970.1	1040.0	6.46
451.5	1148.5	5.95	250.1	1440.0	7.05	930.1	1080.0	6.27
404.2	1195.8	6.01	270.1	1460.0	7.11	910.1	1100.0	6.23
356.9	1243.1	5.94	310.1	1500.0	7.01	870.1	1140.0	6.10
309.6	1290.4	5.70	330.1	1520.0	6.98	850.1	1160.0	6.10
262.3	1337.7	5.46	370.1	1560.0	7.04	810.1	1200.0	6.06
215.0	1385.0	5.20	390.1	1580.0	7.13	790.1	1220.0	6.05
167.7	1432.3	5.12	430.1	1620.0	7.23	750.1	1260.0	5.94
120.4	1479.6	5.27	450.1	1640.0	7.32	730.1	1280.0	5.86
88.8	1511.2	5.48	490.1	1680.0	7.47	690.1	1320.0	5.57
41.5	1558.5	5.49	510.1	1700.0	7.48	670.1	1340.0	5.50
10.0	1590.0	5.69	550.1	1740.0	7.66	630.1	1380.0	5.72
58.5	1658.5	5.49	570.1	1760.0	7.67	610.1	1400.0	5.94
106.9	1706.9	5.65	610.1	1800.0	7.75	570.1	1440.0	6.36
179.6	1779.6	5.78	630.1	1820.0	7.84	550.1	1460.0	6.55
228.1	1828.1	6.07	670.1	1860.0	7.85	510.1	1500.0	6.78
300.8	1900.8	6.36	690.1	1880.0	7.83	490.1	1520.0	6.91
349.2	1949.2	6.45	730.1	1920.0	7.69	450.1	1560.0	6.78
421.9	2021.9	6.40	750.1	1940.0	7.57	430.1	1580.0	6.69
470.4	2070.4	6.21	790.1	1980.0	7.52	390.1	1620.0	6.39
543.1	2143.1	6.31	810.1	2000.0	7.48	370.1	1640.0	6.30
591.5	2191.5	6.56	850.1	2040.0	7.62	330.1	1680.0	6.14
664.2	2264.2	6.90	870.1	2060.0	7.87	310.1	1700.0	6.01
712.7	2312.7	7.01	910.1	2100.0	7.91	270.1	1740.0	5.88
785.4	2385.4	7.33	930.1	2120.0	8.01	250.1	1760.0	5.83
833.8	2433.8	7.45	970.1	2160.0	8.34	210.1	1800.0	5.67
906.5	2506.5	7.96	990.1	2180.0	8.30	190.1	1820.0	5.65
955.0	2555.0	8.20	1030.1	2220.0	8.51	150.1	1860.0	5.60
1027.7	2627.7	8.56	1050.1	2240.0	8.89	130.1	1880.0	5.63
1076.2	2676.2	8.94	1090.1	2280.0	9.15	90.1	1920.0	5.64
1148.8	2748.8	9.26	1110.1	2300.0	9.34	70.1	1940.0	5.68
1197.3	2797.3	9.62	1150.1	2340.0	9.94	30.1	1980.0	5.74
1270.0	2870.0	10.36	1170.1	2360.0	10.28	10.1	2000.0	5.98

REV. X2

MBR-EE7756/20

101012

Page 2 of 5



IF/RF MICROWAVE COMPONENTS • ISO 9001 ISO 14001 AS9100 CERTIFIED RoHS compliant
P.O. Box 350166, Brooklyn, New York 11235-0006 (718) 934-4500 Fax (718) 332-4661



The Design Engineers Search Engine finds the model you need, instantly • For detailed performance specs & shopping online see



Frequency Mixer

MBR-EE7756/20

Typical Performance Data

LO (MHz)	LO-RF ISOLATION (dB)			LO-IF ISOLATION (dB)		
	@LO (dBm)			@LO (dBm)		
	+14	+17	+20	+14	+17	+20
950.0	34.76	34.46	41.58	13.68	14.58	15.99
1030.0	32.39	34.84	41.62	13.76	14.95	15.50
1110.0	31.58	34.97	42.25	14.56	14.99	14.71
1190.0	30.61	34.73	42.71	15.31	14.74	13.89
1270.0	29.79	35.59	48.69	15.75	14.52	13.78
1350.0	30.51	38.00	53.62	15.89	14.68	14.12
1430.0	29.55	36.41	46.31	16.60	15.54	14.80
1510.0	26.50	34.48	54.27	17.29	16.48	16.01
1590.0	27.61	35.87	39.22	17.71	17.74	17.70
1690.0	28.07	33.27	33.84	18.23	19.36	20.25
1770.0	26.74	30.31	31.07	18.26	19.93	21.29
1870.0	25.65	27.27	28.01	17.77	18.80	19.59
1950.0	24.53	24.97	25.21	16.63	17.01	17.20
2050.0	24.22	23.54	22.84	15.56	15.14	14.64
2130.0	23.33	22.22	21.22	14.37	13.76	13.04
2230.0	22.08	20.32	19.45	13.19	12.11	11.66
2310.0	21.22	19.83	19.17	12.46	11.49	10.93
2490.0	22.70	22.01	21.37	10.47	10.10	9.68
2590.0	22.97	22.90	22.32	9.34	9.27	9.04
2670.0	22.85	23.10	22.62	8.61	8.71	8.60
2770.0	22.12	22.60	22.61	7.94	8.12	8.35
2850.0	21.21	21.45	21.57	7.43	7.79	8.18
2950.0	21.16	20.63	20.30	6.79	7.29	7.85
3030.0	21.89	20.81	20.08	6.33	6.97	7.70
3130.0	22.43	20.92	19.59	5.89	6.61	7.54
3210.0	22.49	20.92	19.59	5.66	6.47	7.51
3310.0	21.69	20.42	19.21	5.42	6.34	7.47
3390.0	20.83	19.29	18.21	5.29	6.29	7.58
3490.0	20.27	18.63	17.62	5.05	6.21	7.61
3570.0	20.37	18.57	17.25	4.75	6.12	7.61
3670.0	20.59	18.18	16.65	4.92	6.32	7.69
3750.0	20.55	18.23	16.30	5.24	6.73	7.71
3850.0	20.94	18.95	17.42	6.03	7.37	8.02
3930.0	21.14	19.81	18.78	6.92	7.93	8.32
4030.0	21.83	21.80	21.57	8.36	8.97	8.99
4110.0	22.50	22.88	22.86	9.86	9.98	9.73
4210.0	22.90	23.05	22.25	11.10	10.92	10.30
4290.0	20.88	20.86	20.40	10.95	10.64	10.32
4390.0	18.43	18.92	17.94	10.92	10.96	10.92

RF (IN) (MHz)	LO (MHz)	RF-IF ISOLATION (dB)		
		@LO (dBm)		
		+14	+17	+20
920.0	950.0	26.88	23.47	21.38
1000.0	1030.0	34.46	29.11	25.24
1080.0	1110.0	30.11	28.92	26.23
1160.0	1190.0	25.59	24.40	24.66
1240.0	1270.0	25.82	25.86	26.44
1320.0	1350.0	32.49	30.32	29.26
1400.0	1430.0	33.99	32.10	30.62
1480.0	1510.0	26.40	25.69	25.30
1560.0	1590.0	21.88	21.96	22.04
1660.0	1690.0	18.38	18.64	18.84
1740.0	1770.0	16.40	16.76	17.03
1840.0	1870.0	14.45	14.95	15.31
1920.0	1950.0	13.86	14.30	14.72
2020.0	2050.0	13.70	14.07	14.41
2100.0	2130.0	13.39	13.65	13.95
2200.0	2230.0	12.96	13.04	13.16
2280.0	2310.0	11.80	11.90	12.08
2460.0	2490.0	12.42	12.81	13.65
2560.0	2590.0	14.07	14.50	15.28
2640.0	2670.0	15.00	15.54	16.22
2740.0	2770.0	16.04	16.52	17.10
2820.0	2850.0	16.60	16.91	17.16
2920.0	2950.0	17.43	17.66	17.48
3000.0	3030.0	17.78	18.02	17.95
3100.0	3130.0	18.94	18.76	18.59
3180.0	3210.0	19.62	19.58	19.09
3280.0	3310.0	18.82	19.20	18.76
3360.0	3390.0	18.64	18.93	18.82
3460.0	3490.0	18.92	19.22	19.49
3540.0	3570.0	18.55	19.69	20.54
3640.0	3670.0	18.45	21.23	23.06
3720.0	3750.0	19.81	23.91	27.27
3820.0	3850.0	22.71	28.11	34.64
3900.0	3930.0	23.95	30.30	38.79
4000.0	4030.0	24.36	28.89	31.75
4080.0	4110.0	22.08	26.84	31.20
4180.0	4210.0	19.47	23.44	33.56
4260.0	4290.0	19.83	23.69	24.22
4360.0	4390.0	19.23	22.07	21.12

Frequency Mixer

MBR-EE7756/20

Typical Performance Data

RF (IN) (MHz)	LO (MHz)	RF VSWR (:1)			LO (MHz)	LO VSWR (:1)			IF (OUT) (MHz)	IF VSWR @LO=2000MHz (:1)		
		@LO (dBm)				@LO (dBm)				@LO (dBm)		
		+14	+17	+20		+14	+17	+20		+14	+17	+20
920.0	950.0	10.56	7.60	6.37	950.0	15.00	8.90	7.83	10.0	1.34	1.44	1.52
1000.0	1030.0	6.94	5.44	4.75	1030.0	9.33	6.53	6.51	30.0	1.35	1.45	1.54
1080.0	1110.0	4.80	4.08	3.60	1110.0	6.03	5.33	5.74	50.0	1.35	1.44	1.53
1160.0	1190.0	3.70	3.24	2.86	1190.0	4.66	4.68	5.20	70.0	1.31	1.40	1.48
1240.0	1270.0	2.91	2.59	2.35	1270.0	3.82	4.06	4.66	90.0	1.34	1.43	1.51
1320.0	1350.0	2.30	2.13	2.00	1350.0	3.09	3.49	4.16	110.0	1.35	1.44	1.52
1400.0	1430.0	1.87	1.76	1.67	1430.0	2.52	3.14	3.90	130.0	1.32	1.40	1.48
1480.0	1510.0	1.51	1.44	1.43	1510.0	2.26	2.92	3.73	150.0	1.30	1.38	1.45
1560.0	1590.0	1.26	1.28	1.30	1590.0	2.03	2.71	3.50	190.0	1.37	1.44	1.50
1660.0	1690.0	1.12	1.13	1.17	1690.0	1.80	2.48	3.25	210.0	1.35	1.41	1.47
1740.0	1770.0	1.06	1.07	1.14	1770.0	1.67	2.33	3.05	250.0	1.43	1.48	1.52
1840.0	1870.0	1.13	1.08	1.13	1870.0	1.57	2.18	2.86	270.0	1.45	1.49	1.53
1920.0	1950.0	1.17	1.17	1.23	1950.0	1.49	2.06	2.69	310.0	1.55	1.58	1.61
2020.0	2050.0	1.23	1.27	1.35	2050.0	1.41	1.96	2.56	330.0	1.57	1.58	1.60
2100.0	2130.0	1.22	1.27	1.36	2130.0	1.38	1.89	2.45	370.0	1.67	1.67	1.68
2200.0	2230.0	1.14	1.16	1.22	2230.0	1.40	1.88	2.40	390.0	1.78	1.76	1.75
2280.0	2310.0	1.30	1.23	1.21	2310.0	1.42	1.86	2.34	430.0	1.81	1.77	1.75
2460.0	2490.0	2.33	2.20	2.00	2490.0	1.50	1.89	2.33	490.0	2.06	1.99	1.93
2560.0	2590.0	2.44	2.27	2.07	2590.0	1.56	1.90	2.33	510.0	2.16	2.07	2.01
2640.0	2670.0	2.50	2.31	2.13	2670.0	1.61	1.91	2.29	550.0	2.30	2.18	2.09
2740.0	2770.0	2.51	2.32	2.16	2770.0	1.65	1.95	2.33	570.0	2.46	2.33	2.23
2820.0	2850.0	2.38	2.21	2.08	2850.0	1.71	1.97	2.36	610.0	2.57	2.41	2.29
2920.0	2950.0	2.30	2.10	1.96	2950.0	1.82	2.01	2.37	630.0	2.64	2.49	2.37
3000.0	3030.0	2.22	2.00	1.87	3030.0	1.96	2.12	2.44	670.0	2.85	2.68	2.53
3100.0	3130.0	2.19	1.86	1.69	3130.0	2.03	2.15	2.42	690.0	2.82	2.64	2.49
3180.0	3210.0	2.16	1.79	1.60	3210.0	2.11	2.09	2.36	730.0	3.02	2.82	2.66
3280.0	3310.0	2.10	1.77	1.57	3310.0	2.14	2.07	2.21	750.0	2.95	2.76	2.60
3360.0	3390.0	2.01	1.72	1.54	3390.0	2.11	1.95	2.11	790.0	3.00	2.81	2.65
3460.0	3490.0	1.84	1.56	1.41	3490.0	1.98	1.77	1.85	810.0	2.91	2.71	2.56
3540.0	3570.0	1.72	1.43	1.27	3570.0	1.91	1.66	1.70	850.0	2.91	2.72	2.58
3640.0	3670.0	1.62	1.38	1.24	3670.0	1.83	1.56	1.56	870.0	2.70	2.53	2.39
3720.0	3750.0	1.55	1.37	1.28	3750.0	1.67	1.34	1.40	910.0	2.44	2.31	2.20
3820.0	3850.0	1.52	1.42	1.42	3850.0	1.35	1.19	1.32	930.0	2.35	2.22	2.13
3900.0	3930.0	1.63	1.58	1.59	3930.0	1.17	1.18	1.44	970.0	2.02	1.92	1.86
4000.0	4030.0	1.80	1.80	1.84	4030.0	1.10	1.39	1.74	990.0	2.00	1.92	1.87
4080.0	4110.0	2.07	2.03	2.07	4110.0	1.31	1.67	2.05	1030.0	2.09	2.02	1.99
4180.0	4210.0	2.50	2.42	2.49	4210.0	1.69	2.11	2.48	1050.0	2.27	2.21	2.18
4260.0	4290.0	2.93	2.85	3.25	4290.0	1.99	2.41	2.77	1090.0	2.90	2.86	2.84
4360.0	4390.0	3.86	3.71	3.08	4390.0	2.37	2.70	2.85	1110.0	3.23	3.19	3.15

Harmonics Tables

RF HARMONICS ORDER

	(-dBm)	(dBc)										
0	-	-	+9	9	5	9	17	29	25	32	33	33
1	-	15	+0	44	15	36	29	54	29	38	42	52
2	67	57	67	36	47	47	41	47	73	52	53	58
3	>90	68	57	75	51	68	54	64	68	67	58	64
4	>90	>80	>80	>80	>80	>80	79	74	79	>80	>80	79
5	>90	>80	>80	>80	>80	>80	>80	>80	>80	>80	>80	>80
6	>90	>80	>80	>80	>80	>80	>80	>80	>80	>80	>80	>80
7	>90	>80	>80	>80	>80	>80	>80	>80	>80	>80	>80	>80
8	>90	>80	>80	>80	>80	>80	>80	>80	>80	>80	>80	>80
9	>90	>80	>80	>80	>80	>80	>80	>80	>80	>80	>80	>80
10	>90	>80	>80	>80	>80	>80	>80	>80	>80	>80	>80	>80
	RF CAL	0	1	2	3	4	5	6	7	8	9	10

LO HARMONICS ORDER

Test conditions: RF IN: 1600 MHz; -5.00 dBm.
 LO IN: 1630 MHz; +17.00 dBm
 IF OUT: 30 MHz; -10.48 dBm

RF HARMONICS ORDER

	(-dBm)	(dBc)										
0	-	-	1	20	16	21	27	42	35	50	51	50
1	-	15	+0	48	16	43	30	53	34	42	49	64
2	47	38	62	29	41	34	37	38	57	56	47	63
3	87	45	37	63	37	50	41	50	56	58	48	52
4	>90	53	53	50	69	44	52	50	53	52	64	60
5	>90	73	66	64	63	72	52	64	54	55	68	65
6	>90	74	81	79	72	67	83	67	67	55	66	64
7	>90	81	>89	83	76	75	73	>89	67	83	61	64
8	>90	87	81	86	>89	78	88	80	>89	77	75	64
9	>90	>89	>89	88	>89	>89	>89	>89	>89	86	79	84
10	>90	>89	>89	>89	>89	>89	>89	86	>89	>89	>89	85
	RF CAL	0	1	2	3	4	5	6	7	8	9	10

LO HARMONICS ORDER

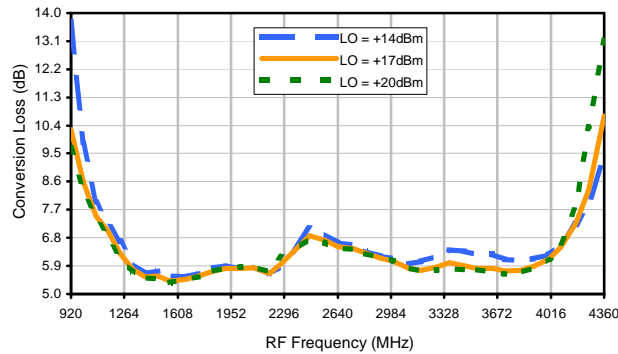
Test conditions: RF IN: 1600 MHz; 5.00 dBm.
 LO IN: 1630 MHz; +17.00 dBm
 IF OUT: 30 MHz; -0.75 dBm

- Notes: 1. All Harmonics are in (dBc) relative to IF OUTPUT.
 2. + entry denotes harmonics are in (dBc) above IF OUTPUT.
 3. RF Cal represent the Harmonics level of the RF input signal to the mixer.

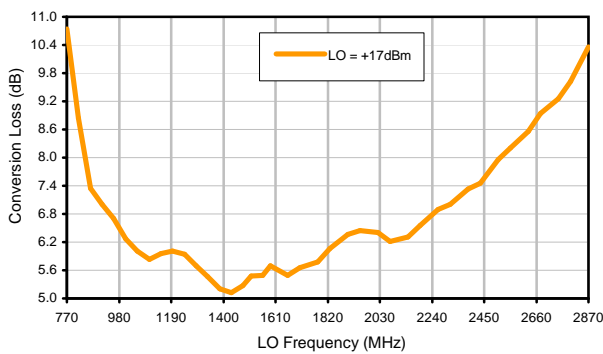


Typical Performance Curves

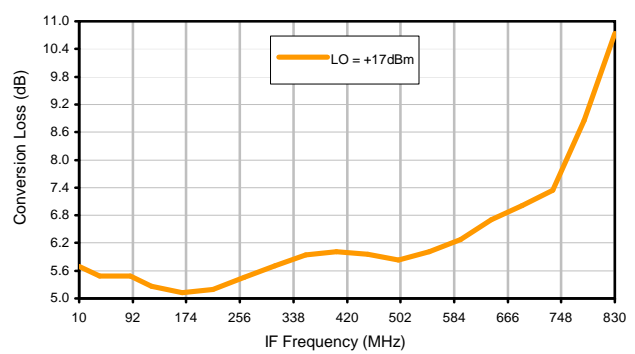
Conversion Loss @ IF=30MHz



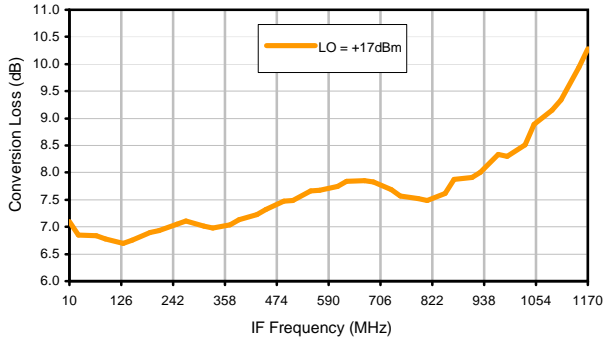
Conversion Loss vs. LO @ RF=1600MHz



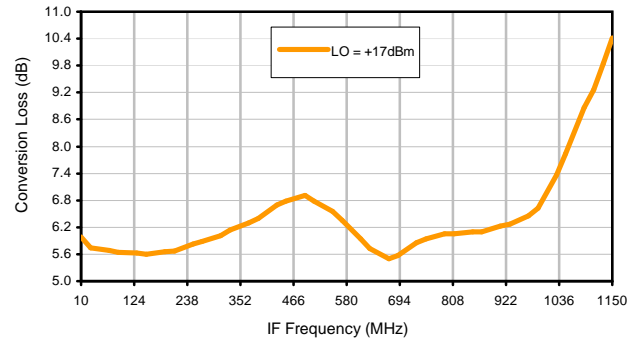
Conversion Loss vs. IF @ RF=1600MHz



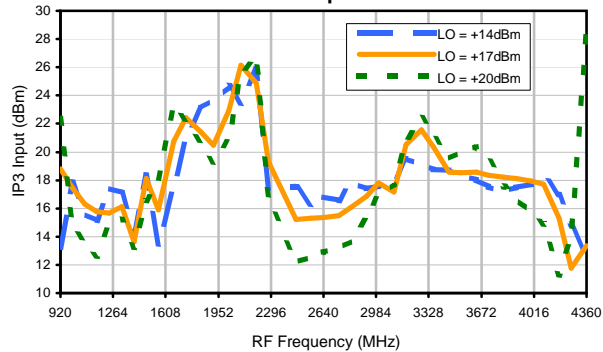
Conversion Loss vs. IF @ RF=1189.9MHz



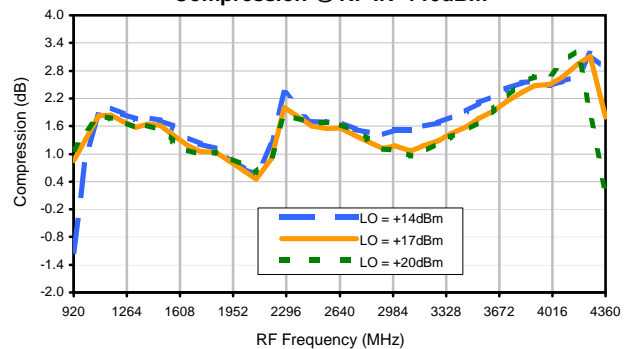
Conversion Loss vs. IF @ RF=2010.1MHz



IP3 Input

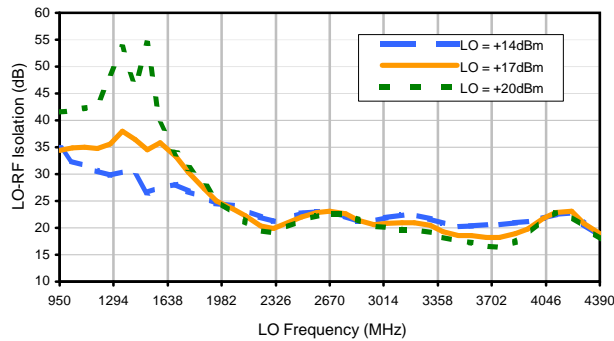


Compression @ RF IN=+10dBm

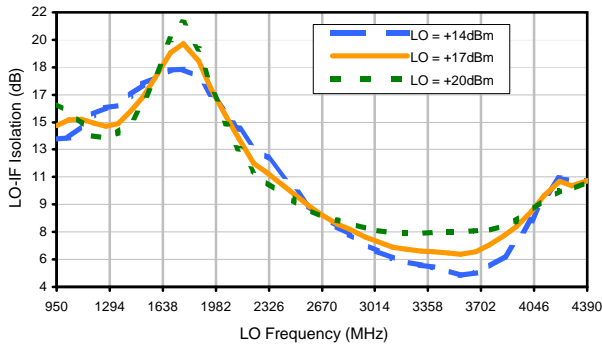


Typical Performance Curves

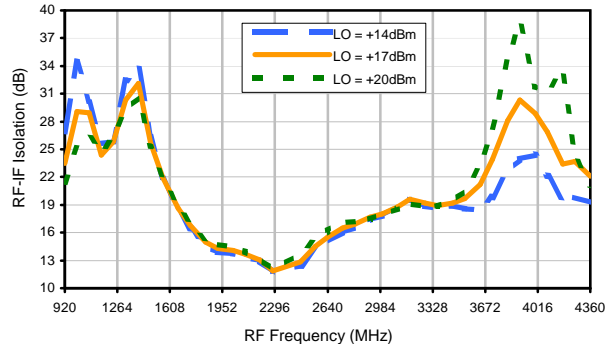
LO-RF Isolation



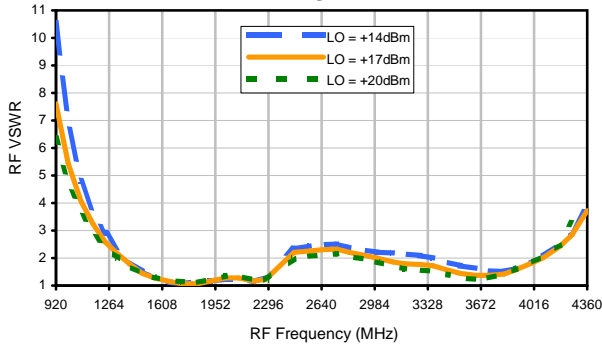
LO-IF Isolation



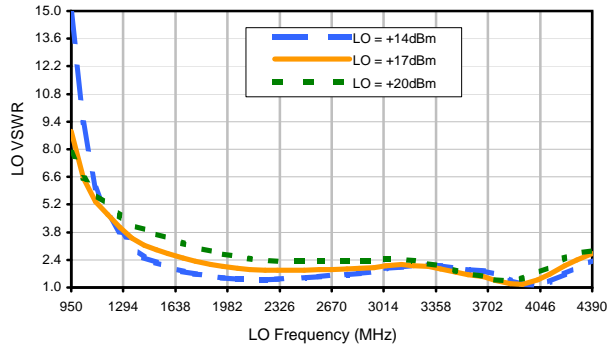
RF-IF Isolation



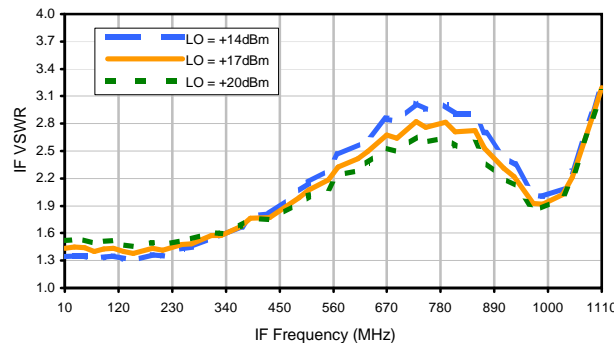
RF VSWR



LO VSWR



IF VSWR



Harmonics Tables

RF HARMONICS ORDER

	(-dBm)	(-dBc)										
0	-	-	+9	9	5	9	17	29	25	32	33	33
1	-	15	+0	44	15	36	29	54	29	38	42	52
2	67	57	67	36	47	47	41	47	73	52	53	58
3	>90	68	57	75	51	68	54	64	68	67	58	64
4	>90	>80	>80	>80	>80	>80	79	74	79	>80	>80	79
5	>90	>80	>80	>80	>80	>80	>80	>80	>80	>80	>80	>80
6	>90	>80	>80	>80	>80	>80	>80	>80	>80	>80	>80	>80
7	>90	>80	>80	>80	>80	>80	>80	>80	>80	>80	>80	>80
8	>90	>80	>80	>80	>80	>80	>80	>80	>80	>80	>80	>80
9	>90	>80	>80	>80	>80	>80	>80	>80	>80	>80	>80	>80
10	>90	>80	>80	>80	>80	>80	>80	>80	>80	>80	>80	>80
	RF CAL	0	1	2	3	4	5	6	7	8	9	10

LO HARMONICS ORDER

Test conditions: RF IN: 1600 MHz; -5.00 dBm.
 LO IN: 1630 MHz; +17.00 dBm
 IF OUT: 30 MHz; -10.48 dBm

RF HARMONICS ORDER

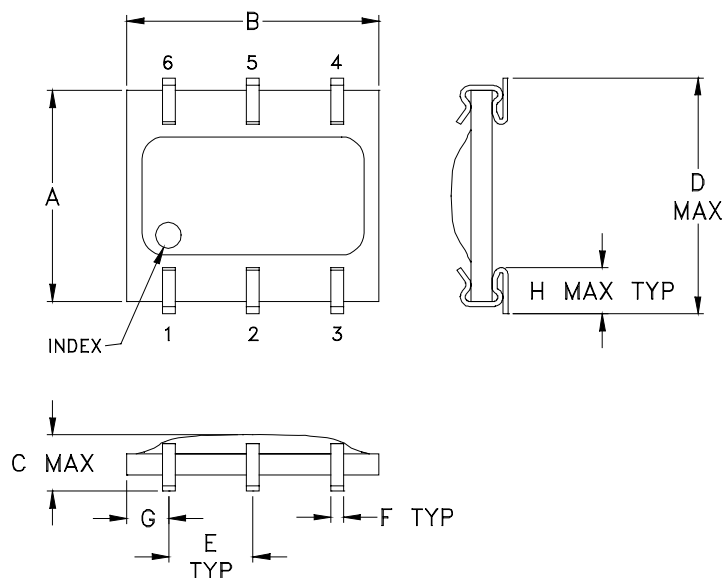
	(-dBm)	(-dBc)										
0	-	-	1	20	16	21	27	42	35	50	51	50
1	-	15	+0	48	16	43	30	53	34	42	49	64
2	47	38	62	29	41	34	37	38	57	56	47	63
3	87	45	37	63	37	50	41	50	56	58	48	52
4	>90	53	53	50	69	44	52	50	53	52	64	60
5	>90	73	66	64	63	72	52	64	54	55	68	65
6	>90	74	81	79	72	67	83	67	67	55	66	64
7	>90	81	>89	83	76	75	73	>89	67	83	61	64
8	>90	87	81	86	>89	78	88	80	>89	77	75	64
9	>90	>89	>89	88	>89	>89	>89	>89	>89	86	79	84
10	>90	>89	>89	>89	>89	>89	>89	86	>89	>89	>89	85
	RF CAL	0	1	2	3	4	5	6	7	8	9	10

LO HARMONICS ORDER

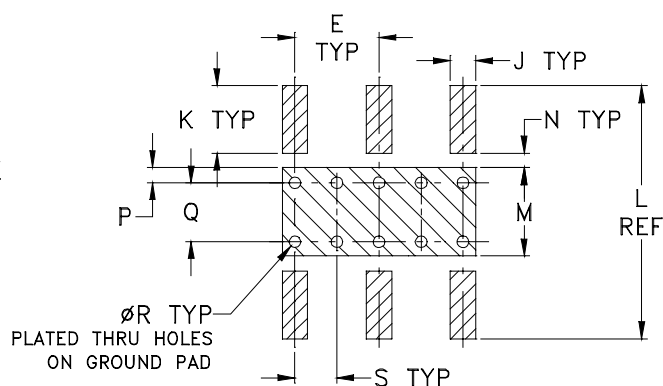
Test conditions: RF IN: 1600 MHz; 5.00 dBm.
 LO IN: 1630 MHz; +17.00 dBm
 IF OUT: 30 MHz; -0.75 dBm

- Notes: 1. All Harmonics are in (dBc) relative to IF OUTPUT.
 2. + entry denotes harmonics are in (dBc) above IF OUTPUT.
 3. RF Cal represent the Harmonics level of the RF input signal to the mixer.

Outline Dimensions



PCB Land Pattern



Suggested Layout,

Tolerance to be within $\pm .002$
 ADJACENT GROUND PINS SHALL BE CONNECTED
 TO EACH OTHER AND TO GROUND PAD

CASE#	A	B	C	D	E	F	G	H	J	K	L	M	N
SM26	.250 (6.35)	.300 (7.62)	.095 (2.41)	.290 (7.37)	.100 (2.54)	.015 (.38)	.050 (1.27)	.060 (1.52)	.030 (.76)	.080 (2.03)	.300 (7.62)	.100 (2.54)	.020 (.51)

CASE#	P	Q	R	S	WT, GRAM
SM26	.015 (.38)	.070 (1.78)	.014 (.36)	.050 (1.27)	.3

Dimensions are in inches (mm). Tolerances: 2 Pl. $\pm .005$; 3 Pl. $\pm .005$

Notes:

- Case material: Plastic encapsulation on Ceramic base.
- Termination finish:
 For RoHS Case Styles: Tin plate over Nickel plate.
 For RoHS-5 Case Styles: Tin-Lead plate.

Tape & Reel Packaging TR-F34



Tape Width, mm	Device Cavity Pitch, mm	Reel Size, inches	Devices per Reel see note	
16	12	7	Small quantity standard (see note)	20
				50
				100
				200
		13	Standard	500
				1000

Note: Availability of small reel quantity varies by model.
Refer to pricing and availability on individual model dashboard.

Mini-Circuits carrier tape materials provide protection from ESD (Electro-Static Discharge) during handling and transportation. Tapes are static dissipative and comply with industry standards EIA-481/EIA-541.

Go to: www.minicircuits.com/pages/pdfs/tape.pdf



INTERNET <http://www.minicircuits.com>

P.O. Box 350166, Brooklyn, New York 11235-0003 (718) 934-4500 Fax (718) 332-4661

Distribution Centers NORTH AMERICA 800-654-7949 • 417-335-5935 • Fax 417-335-5945 • EUROPE 44-1252-832600 • Fax 44-1252-837010

Mini-Circuits ISO 9001 & ISO 14001 Certified



All Mini-Circuits products are manufactured under exacting quality assurance and control standards, and are capable of meeting published specifications after being subjected to any or all of the following physical and environmental test.

Specification	Test/Inspection Condition	Reference/Spec
Operating Temperature	-40° to 85°C Ambient Environment	Individual Model Data Sheet
Storage Temperature	-55° to 100° C Ambient Environment	Individual Model Data Sheet
Humidity	90 to 95% RH, 240 hours, 50°C	MIL-STD-202, Method 103, Condition A, Except 50°C and end-point electrical test done within 12 hours
Thermal Shock	-55° to 100°C, 100 cycles	MIL-STD-202, Method 107, Condition A-3, except +100°C
Solder Reflow Heat	Sn-Pb Eutetic Process: 225°C peak Pb-Free Process 245° - 250°C peak	J-STD-020, Table 4-1, 4-2 and 5-2, Figure 5-1
Solderability	10X Magnification	J-STD-002, 95% Coverage
Vibration (High Frequency)	20g peak, 10-2000 Hz, 12 times in each of three perpendicular directions (total 36)	MIL-STD-202, Method 204, Condition D
Mechanical Shock	50g, 11 ms, 1/2-sine, 18 shocks: 3 each direction, each of 3 axes	MIL-STD-202, Method 213, Condition A
Marking Resistance to Solvents	Isopropyl alcohol + mineral spirits at 25°C; terpene defluxer at 25°C; distilled water + proylene glycol monomethyl ether + monoethanolamine at 63°C to 70°C	MIL-STD-202, Method 215