

High IP3

Frequency Mixer WIDE BAND

MCA-35LH+

Level 10 (LO Power+10 dBm) 500 to 3500 MHz



Generic photo used for illustration purposes only

CASE STYLE: DZ883

+RoHS Compliant

The +Suffix identifies RoHS Compliance. See our web site for RoHS Compliance methodologies and qualifications



Available Tape and Reel at no extra cost

| Reel Size | Devices/Reel |
|-----------|----------------------|
| 7" | 10, 20, 50, 100, 200 |
| 13" | 500, 1000 |

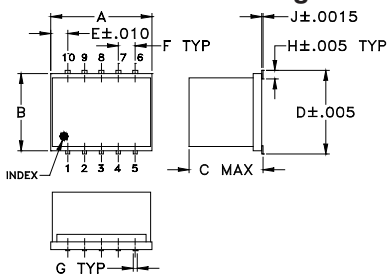
Maximum Ratings

| | |
|---|----------------|
| Operating Temperature | -55°C to 100°C |
| Storage Temperature | -55°C to 100°C |
| RF Power | 50 mW |
| IF Current | 40 mA |
| Permanent damage may occur if any of these limits are exceeded. | |

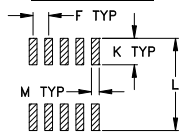
Pin Connections

| | |
|--------|---------------|
| LO | 10 |
| RF | 5 |
| IF | 3 |
| GROUND | 1,2,4,6,7,8,9 |

Outline Drawing



PCB Land Pattern



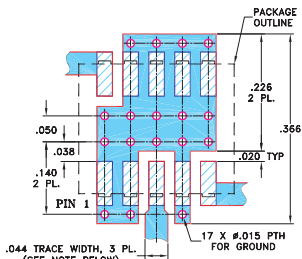
Suggested Layout, Tolerance to be within ±.002

Outline Dimensions (inch/mm)

| | | | | | | | |
|------|------|------|------|------|------|-------|--|
| A | B | C | D | E | F | G | |
| .30 | .250 | .190 | .266 | .050 | .050 | .012 | |
| 7.62 | 6.35 | 4.83 | 6.76 | 1.27 | 1.27 | 0.30 | |
| H | J | K | L | M | | wt | |
| .029 | .004 | .085 | .296 | .030 | | grams | |
| 0.74 | 0.10 | 2.16 | 7.52 | 0.76 | | 0.5 | |

Demo Board MCL P/N: TB-144

Suggested PCB Layout (PL-045)



NOTES: 1. TRACE WIDTH IS SHOWN FOR ROGERS RO4350B WITH DIELECTRIC THICKNESS .020" ± .0015"; COPPER: 1/2 OZ. EACH SIDE. FOR OTHER MATERIALS TRACE WIDTH MAY NEED TO BE MODIFIED.
2. BOTTOM SIDE OF THE PCB IS CONTINUOUS GROUND PLANE.

- DENOTES PCB COPPER LAYOUT WITH SMOBC (SOLDER MASK OVER BARE COPPER)
- DENOTES COPPER LAND PATTERN FREE OF SOLDER MASK

Notes

A. Performance and quality attributes and conditions not expressly stated in this specification document are intended to be excluded and do not form a part of this specification document.
B. Electrical specifications and performance data contained in this specification document are based on Mini-Circuit's applicable established test performance criteria and measurement instructions.
C. The parts covered by this specification document are subject to Mini-Circuits standard limited warranty and terms and conditions (collectively, "Standard Terms"). Purchasers of this part are entitled to the rights and benefits contained therein. For a full statement of the Standard Terms and the exclusive rights and remedies thereunder, please visit Mini-Circuits' website at www.minicircuits.com/MCLStore/terms.jsp

Features

- wide bandwidth, 500 to 3500 MHz
- excellent isolation, 30 dB typ. (1800-2500 MHz)
- good matching 2:1 VSWR typ. (over 1800-2800 MHz)
- small size 0.25"x0.3"x0.2"
- aqueous washable
- triple balanced mixer
- protected by US Patent 6,917,796

Applications

- cellular
- PCN
- PDC
- DECT
- PHS
- WiMAX

Electrical Specifications (T_{AMB}=-55°C to 100°C)

| FREQUENCY (MHz) | | CONVERSION LOSS (dB) | | | LO-RF ISOLATION (dB) | | LO-IF ISOLATION (dB) | | IP3 at center band (dBm) |
|--------------------------------------|---------|----------------------|----------|------|----------------------|------|----------------------|------|--------------------------|
| LO/RF f _i -f _o | IF | \bar{X} | σ | Max. | Typ. | Min. | Typ. | Min. | Typ. |
| 500-3500 | 10-1500 | 6.9 | 0.1 | 8.9 | | | | | |
| 500-800 | 10-300 | 6.3 | 0.1 | 7.7 | 18 | 11 | 32 | 25 | 16 |
| 800-1000 | 10-200 | 7.1 | 0.1 | 8.6 | 24 | 17 | 30 | 23 | 16 |
| 1000-1800 | 10-800 | 7.3 | 0.1 | 8.9 | 29 | 20 | 28 | 20 | 16 |
| 1800-2000 | 10-200 | 6.3 | 0.1 | 8.2 | 32 | 25 | 30 | 23 | 16 |
| 1800-2500 | 10-700 | 5.8 | 0.1 | 8.2 | 32 | 22 | 30 | 21 | 16 |
| 2000-3500 | 10-1500 | 6.5 | 0.1 | 8.7 | 29 | 17 | 26 | 15 | 16 |

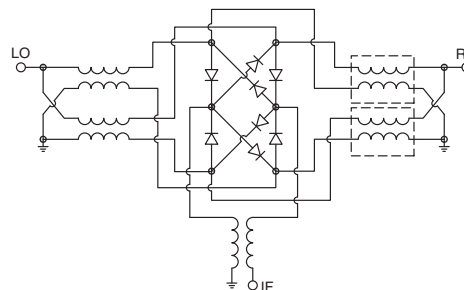
1 dB COMPR. +6 dBm typ.

see individual band specs

Typical Performance Data

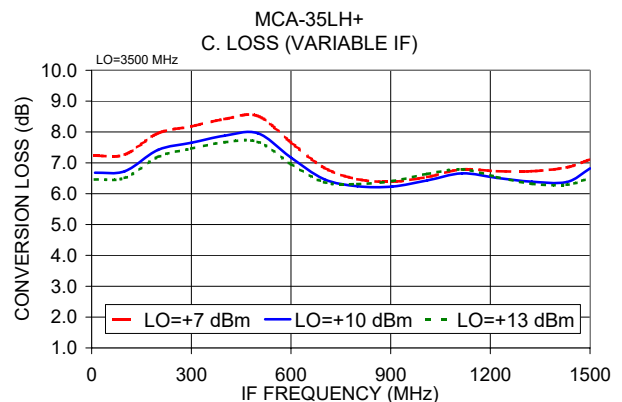
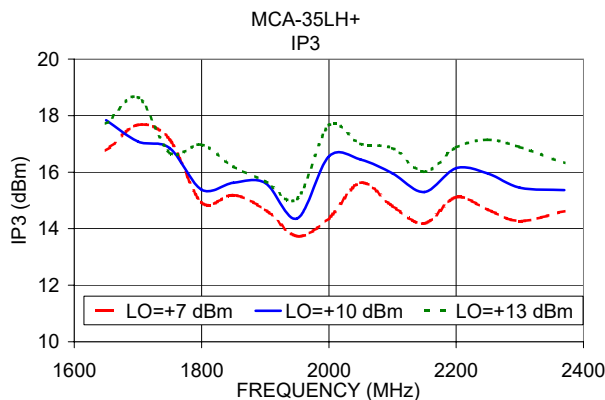
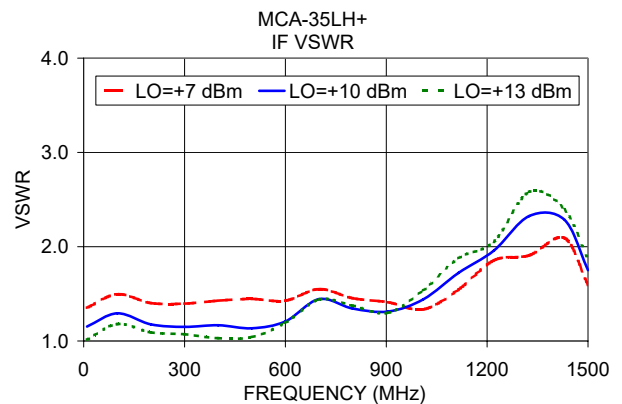
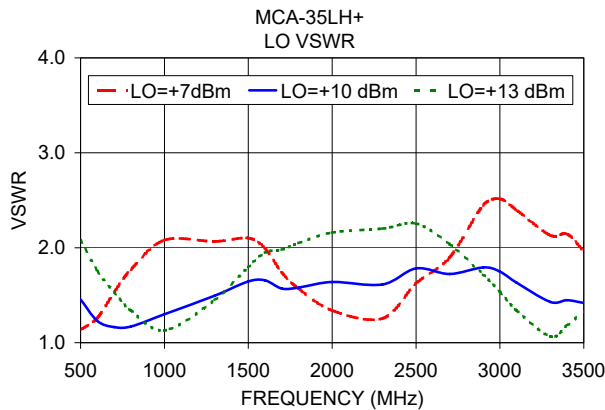
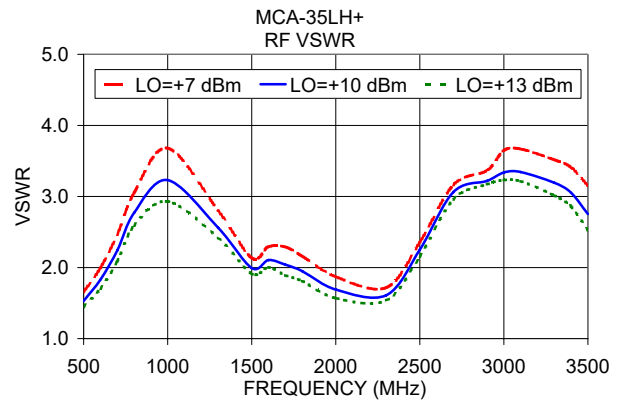
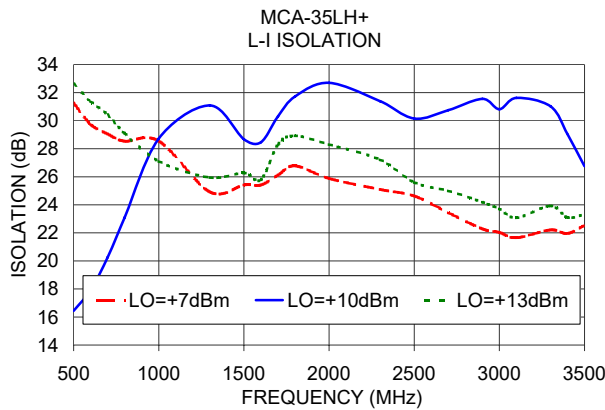
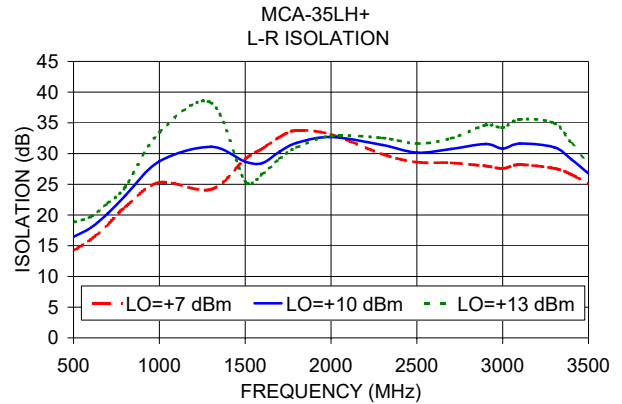
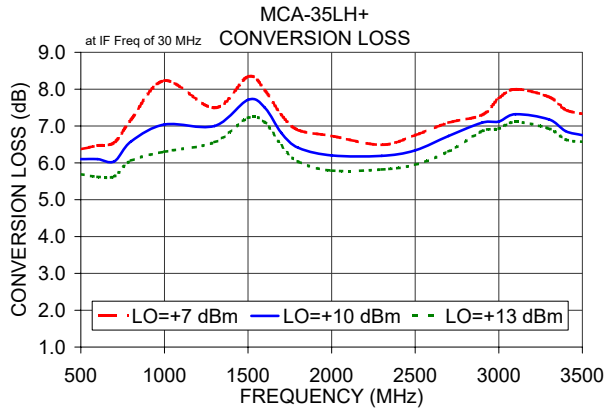
| Frequency (MHz) | | Conversion Loss (dB) | Isolation L-R (dB) | Isolation L-I (dB) | VSWR RF Port (:1) | VSWR LO Port (:1) |
|-----------------|---------|----------------------|--------------------|--------------------|-------------------|-------------------|
| RF | LO | LO +10dBm | LO +10dBm | LO +10dBm | LO +10dBm | LO +10dBm |
| 500.00 | 530.00 | 6.10 | 16.44 | 16.44 | 1.53 | 1.46 |
| 600.00 | 630.00 | 6.10 | 17.92 | 17.92 | 1.83 | 1.23 |
| 700.00 | 730.00 | 6.04 | 20.26 | 20.26 | 2.24 | 1.16 |
| 800.00 | 830.00 | 6.58 | 23.10 | 23.10 | 2.77 | 1.17 |
| 1000.00 | 1030.00 | 7.04 | 28.73 | 28.73 | 3.23 | 1.30 |
| 1300.00 | 1330.00 | 7.00 | 31.09 | 31.09 | 2.56 | 1.49 |
| 1500.00 | 1530.00 | 7.71 | 28.68 | 28.68 | 1.99 | 1.65 |
| 1600.00 | 1630.00 | 7.50 | 28.46 | 28.46 | 2.11 | 1.66 |
| 1700.00 | 1730.00 | 6.81 | 30.31 | 30.31 | 2.04 | 1.57 |
| 1800.00 | 1830.00 | 6.41 | 31.73 | 31.73 | 1.95 | 1.58 |
| 2000.00 | 2030.00 | 6.20 | 32.70 | 32.70 | 1.69 | 1.64 |
| 2300.00 | 2330.00 | 6.19 | 31.39 | 31.39 | 1.61 | 1.61 |
| 2500.00 | 2530.00 | 6.34 | 30.15 | 30.15 | 2.25 | 1.78 |
| 2700.00 | 2730.00 | 6.73 | 30.75 | 30.75 | 3.06 | 1.72 |
| 2900.00 | 2930.00 | 7.09 | 31.56 | 31.56 | 3.22 | 1.79 |
| 3000.00 | 3030.00 | 7.12 | 30.82 | 30.82 | 3.34 | 1.75 |
| 3100.00 | 3130.00 | 7.32 | 31.63 | 31.63 | 3.34 | 1.63 |
| 3300.00 | 3330.00 | 7.18 | 31.03 | 31.03 | 3.19 | 1.43 |
| 3400.00 | 3430.00 | 6.86 | 29.04 | 29.04 | 3.05 | 1.45 |
| 3500.00 | 3530.00 | 6.75 | 26.75 | 26.75 | 2.75 | 1.42 |

Electrical Schematic



Performance Charts

MCA-35LH+



Notes

- A. Performance and quality attributes and conditions not expressly stated in this specification document are intended to be excluded and do not form a part of this specification document.
- B. Electrical specifications and performance data contained in this specification document are based on Mini-Circuit's applicable established test performance criteria and measurement instructions.
- C. The parts covered by this specification document are subject to Mini-Circuits standard limited warranty and terms and conditions (collectively, "Standard Terms"); Purchasers of this part are entitled to the rights and benefits contained therein. For a full statement of the Standard Terms and the exclusive rights and remedies thereunder, please visit Mini-Circuits' website at www.minicircuits.com/MCLStore/terms.jsp



Frequency Mixer

MCA-35LH+

Typical Performance Data

| RF (IN) (MHz) | LO (MHz) | CONVERSION LOSS IF FIXED @IF(OUT)=30MHz (dB) | | | RF (IN) (MHz) | LO (MHz) | IP3 INPUT (dBm) | | | RF (IN) (MHz) | LO (MHz) | COMPRESSION @RF IN=+6dBm (dB) | | |
|---------------|----------|--|-------|-------|---------------|----------|-----------------|-------|-------|---------------|----------|-------------------------------|------|------|
| | | @LO (dBm) | | | | | @LO (dBm) | | | | | @LO (dBm) | | |
| | | +7 | +10 | +13 | | | +7 | +10 | +13 | | | +7 | +10 | +13 |
| 140.0 | 170.0 | 14.27 | 11.45 | 10.48 | 140.0 | 170.0 | 16.44 | 17.85 | 22.95 | 140.0 | 170.0 | 0.10 | 0.34 | 0.16 |
| 240.0 | 270.0 | 9.06 | 8.08 | 7.64 | 240.0 | 270.0 | 15.71 | 13.33 | 13.97 | 240.0 | 270.0 | 0.64 | 0.39 | 0.27 |
| 340.0 | 370.0 | 7.31 | 6.72 | 6.38 | 340.0 | 370.0 | 14.94 | 14.03 | 14.27 | 340.0 | 370.0 | 0.86 | 0.53 | 0.41 |
| 440.0 | 470.0 | 6.78 | 6.19 | 5.83 | 440.0 | 470.0 | 21.82 | 20.21 | 17.73 | 440.0 | 470.0 | 0.96 | 0.67 | 0.55 |
| 540.0 | 570.0 | 6.57 | 5.94 | 5.56 | 540.0 | 570.0 | 14.34 | 18.15 | 21.04 | 540.0 | 570.0 | 1.06 | 0.76 | 0.63 |
| 640.0 | 670.0 | 6.67 | 5.95 | 5.52 | 640.0 | 670.0 | 14.71 | 19.21 | 23.66 | 640.0 | 670.0 | 1.06 | 0.80 | 0.69 |
| 740.0 | 770.0 | 7.04 | 6.17 | 5.70 | 740.0 | 770.0 | 16.11 | 22.02 | 28.45 | 740.0 | 770.0 | 0.91 | 0.73 | 0.65 |
| 840.0 | 870.0 | 7.71 | 6.67 | 6.13 | 840.0 | 870.0 | 16.62 | 22.84 | 27.59 | 840.0 | 870.0 | 0.72 | 0.60 | 0.55 |
| 940.0 | 970.0 | 8.20 | 6.89 | 6.29 | 940.0 | 970.0 | 15.00 | 23.38 | 20.75 | 940.0 | 970.0 | 0.42 | 0.55 | 0.47 |
| 1040.0 | 1070.0 | 8.82 | 7.41 | 6.56 | 1040.0 | 1070.0 | 12.68 | 15.67 | 19.49 | 1040.0 | 1070.0 | 0.04 | 0.22 | 0.33 |
| 1140.0 | 1170.0 | 8.82 | 7.49 | 6.56 | 1140.0 | 1170.0 | 11.50 | 13.77 | 16.86 | 1140.0 | 1170.0 | 0.14 | 0.24 | 0.37 |
| 1240.0 | 1270.0 | 8.29 | 7.10 | 6.53 | 1240.0 | 1270.0 | 14.14 | 16.46 | 18.49 | 1240.0 | 1270.0 | 0.65 | 0.56 | 0.42 |
| 1340.0 | 1370.0 | 8.50 | 7.54 | 7.03 | 1340.0 | 1370.0 | 13.76 | 14.79 | 16.18 | 1340.0 | 1370.0 | 0.51 | 0.42 | 0.37 |
| 1440.0 | 1470.0 | 8.63 | 7.36 | 6.86 | 1440.0 | 1470.0 | 14.99 | 18.65 | 19.16 | 1440.0 | 1470.0 | 0.65 | 0.53 | 0.36 |
| 1540.0 | 1570.0 | 8.98 | 7.99 | 7.53 | 1540.0 | 1570.0 | 14.96 | 16.02 | 17.18 | 1540.0 | 1570.0 | 0.58 | 0.38 | 0.24 |
| 1640.0 | 1670.0 | 8.11 | 7.11 | 6.77 | 1640.0 | 1670.0 | 15.96 | 16.91 | 17.58 | 1640.0 | 1670.0 | 0.61 | 0.45 | 0.29 |
| 1740.0 | 1770.0 | 7.74 | 6.76 | 6.30 | 1740.0 | 1770.0 | 17.41 | 18.11 | 17.26 | 1740.0 | 1770.0 | 0.59 | 0.45 | 0.31 |
| 1840.0 | 1870.0 | 7.40 | 6.52 | 6.09 | 1840.0 | 1870.0 | 17.63 | 17.30 | 17.15 | 1840.0 | 1870.0 | 0.78 | 0.53 | 0.35 |
| 1940.0 | 1970.0 | 7.30 | 6.52 | 6.08 | 1940.0 | 1970.0 | 15.63 | 15.35 | 15.36 | 1940.0 | 1970.0 | 0.94 | 0.62 | 0.42 |
| 2040.0 | 2070.0 | 6.89 | 6.19 | 5.88 | 2040.0 | 2070.0 | 17.67 | 17.90 | 17.49 | 2040.0 | 2070.0 | 1.26 | 0.77 | 0.50 |
| 2140.0 | 2170.0 | 6.74 | 6.18 | 5.89 | 2140.0 | 2170.0 | 15.96 | 16.08 | 16.89 | 2140.0 | 2170.0 | 1.21 | 0.80 | 0.60 |
| 2240.0 | 2270.0 | 6.65 | 6.13 | 5.83 | 2240.0 | 2270.0 | 14.95 | 15.75 | 16.53 | 2240.0 | 2270.0 | 1.35 | 0.91 | 0.68 |
| 2340.0 | 2370.0 | 6.84 | 6.34 | 6.05 | 2340.0 | 2370.0 | 12.74 | 13.68 | 14.69 | 2340.0 | 2370.0 | 1.24 | 0.86 | 0.68 |
| 2440.0 | 2470.0 | 6.89 | 6.31 | 6.00 | 2440.0 | 2470.0 | 14.18 | 14.65 | 15.26 | 2440.0 | 2470.0 | 1.12 | 0.82 | 0.67 |
| 2540.0 | 2570.0 | 7.13 | 6.49 | 6.09 | 2540.0 | 2570.0 | 13.95 | 14.61 | 15.22 | 2540.0 | 2570.0 | 1.13 | 0.84 | 0.70 |
| 2640.0 | 2670.0 | 7.15 | 6.53 | 6.16 | 2640.0 | 2670.0 | 14.62 | 15.23 | 15.28 | 2640.0 | 2670.0 | 1.34 | 0.87 | 0.69 |
| 2740.0 | 2770.0 | 7.45 | 6.92 | 6.59 | 2740.0 | 2770.0 | 13.90 | 14.60 | 16.04 | 2740.0 | 2770.0 | 1.14 | 0.71 | 0.56 |
| 2840.0 | 2870.0 | 7.58 | 7.07 | 6.84 | 2840.0 | 2870.0 | 14.41 | 16.08 | 17.81 | 2840.0 | 2870.0 | 0.96 | 0.59 | 0.47 |
| 2940.0 | 2970.0 | 7.90 | 7.25 | 7.03 | 2940.0 | 2970.0 | 16.76 | 17.45 | 17.90 | 2940.0 | 2970.0 | 0.82 | 0.46 | 0.35 |
| 3040.0 | 3070.0 | 8.41 | 7.55 | 7.22 | 3040.0 | 3070.0 | 18.71 | 18.30 | 18.37 | 3040.0 | 3070.0 | 0.72 | 0.35 | 0.26 |
| 3140.0 | 3170.0 | 8.89 | 7.73 | 7.37 | 3140.0 | 3170.0 | 19.54 | 18.49 | 18.83 | 3140.0 | 3170.0 | 0.58 | 0.33 | 0.24 |
| 3240.0 | 3270.0 | 9.27 | 7.98 | 7.54 | 3240.0 | 3270.0 | 20.85 | 20.06 | 19.35 | 3240.0 | 3270.0 | 0.47 | 0.31 | 0.23 |
| 3340.0 | 3370.0 | 9.40 | 8.07 | 7.64 | 3340.0 | 3370.0 | 17.56 | 19.50 | 19.58 | 3340.0 | 3370.0 | 0.55 | 0.34 | 0.22 |
| 3440.0 | 3470.0 | 9.58 | 8.07 | 7.67 | 3440.0 | 3470.0 | 17.43 | 19.45 | 19.33 | 3440.0 | 3470.0 | 0.53 | 0.37 | 0.26 |
| 3540.0 | 3570.0 | 9.48 | 8.07 | 7.65 | 3540.0 | 3570.0 | 17.54 | 19.18 | 19.46 | 3540.0 | 3570.0 | 0.63 | 0.43 | 0.31 |
| 3640.0 | 3670.0 | 9.74 | 8.43 | 7.96 | 3640.0 | 3670.0 | 15.08 | 17.42 | 19.00 | 3640.0 | 3670.0 | 0.79 | 0.50 | 0.30 |
| 3720.0 | 3750.0 | 10.98 | 9.42 | 8.84 | 3720.0 | 3750.0 | 13.53 | 14.71 | 16.14 | 3720.0 | 3750.0 | 0.77 | 0.61 | 0.33 |
| 3820.0 | 3850.0 | 11.39 | 9.80 | 8.92 | 3820.0 | 3850.0 | 14.63 | 13.52 | 14.86 | 3820.0 | 3850.0 | 0.84 | 0.84 | 0.57 |
| 3900.0 | 3930.0 | 11.23 | 9.52 | 8.51 | 3900.0 | 3930.0 | 15.19 | 16.34 | 16.33 | 3900.0 | 3930.0 | 1.38 | 1.17 | 0.85 |
| 4000.0 | 4030.0 | 15.93 | 13.02 | 11.42 | 4000.0 | 4030.0 | 6.66 | 10.73 | 11.71 | 4000.0 | 4030.0 | 0.39 | 1.15 | 1.32 |

Frequency Mixer

MCA-35LH+

Typical Performance Data

| IF (OUT) (MHz) | LO (MHz) | CONVERSION LOSS VS. IF FREQUENCY @RF(IN)=1760.1MHz (dB) | IF (OUT) (MHz) | LO (MHz) | CONVERSION LOSS VS. IF FREQUENCY @RF(IN)=489.9MHz (dB) | IF (OUT) (MHz) | LO (MHz) | CONVERSION LOSS VS. IF FREQUENCY @RF(IN)=3510.1MHz (dB) |
|----------------|----------|---|----------------|----------|--|----------------|----------|---|
| | | @LO (dBm) | | | @LO (dBm) | | | @LO (dBm) |
| | | +10 | | | +10 | | | +10 |
| 1650.1 | 110.0 | 11.79 | 10.1 | 500.0 | 6.11 | 1790.1 | 1720.0 | 10.66 |
| 1610.1 | 150.0 | 10.13 | 90.1 | 580.0 | 5.87 | 1750.1 | 1760.0 | 10.17 |
| 1570.1 | 190.0 | 9.45 | 170.1 | 660.0 | 5.71 | 1710.1 | 1800.0 | 9.95 |
| 1530.1 | 230.0 | 9.07 | 270.1 | 760.0 | 5.53 | 1670.1 | 1840.0 | 9.67 |
| 1490.1 | 270.0 | 8.89 | 350.1 | 840.0 | 5.55 | 1630.1 | 1880.0 | 9.64 |
| 1450.1 | 310.0 | 8.81 | 450.1 | 940.0 | 5.52 | 1590.1 | 1920.0 | 9.71 |
| 1410.1 | 350.0 | 8.76 | 530.1 | 1020.0 | 5.68 | 1550.1 | 1960.0 | 9.86 |
| 1370.1 | 390.0 | 8.60 | 630.1 | 1120.0 | 6.17 | 1510.1 | 2000.0 | 9.77 |
| 1330.1 | 430.0 | 8.53 | 710.1 | 1200.0 | 6.26 | 1470.1 | 2040.0 | 9.48 |
| 1290.1 | 470.0 | 8.44 | 810.1 | 1300.0 | 6.52 | 1430.1 | 2080.0 | 9.43 |
| 1250.1 | 510.0 | 8.50 | 890.1 | 1380.0 | 6.87 | 1390.1 | 2120.0 | 9.46 |
| 1210.1 | 550.0 | 8.46 | 990.1 | 1480.0 | 6.61 | 1350.1 | 2160.0 | 9.52 |
| 1170.1 | 590.0 | 8.44 | 1070.1 | 1560.0 | 6.47 | 1310.1 | 2200.0 | 9.45 |
| 1130.1 | 630.0 | 8.47 | 1170.1 | 1660.0 | 6.22 | 1270.1 | 2240.0 | 9.37 |
| 1090.1 | 670.0 | 8.47 | 1250.1 | 1740.0 | 6.35 | 1230.1 | 2280.0 | 9.33 |
| 1050.1 | 710.0 | 8.43 | 1350.1 | 1840.0 | 6.27 | 1190.1 | 2320.0 | 9.23 |
| 1010.1 | 750.0 | 8.25 | 1430.1 | 1920.0 | 6.46 | 1150.1 | 2360.0 | 9.11 |
| 970.1 | 790.0 | 7.94 | 1530.1 | 2020.0 | 6.63 | 1110.1 | 2400.0 | 9.00 |
| 930.1 | 830.0 | 7.61 | 1610.1 | 2100.0 | 7.09 | 1070.1 | 2440.0 | 8.91 |
| 890.1 | 870.0 | 7.13 | 1710.1 | 2200.0 | 7.37 | 1010.1 | 2500.0 | 8.82 |
| 850.1 | 910.0 | 6.88 | 1790.1 | 2280.0 | 7.06 | 970.1 | 2540.0 | 8.60 |
| 810.1 | 950.0 | 6.77 | 1890.1 | 2380.0 | 7.34 | 910.1 | 2600.0 | 8.41 |
| 770.1 | 990.0 | 7.00 | 1970.1 | 2460.0 | 7.88 | 870.1 | 2640.0 | 8.25 |
| 730.1 | 1030.0 | 7.30 | 2070.1 | 2560.0 | 7.88 | 810.1 | 2700.0 | 8.20 |
| 690.1 | 1070.0 | 7.53 | 2150.1 | 2640.0 | 7.50 | 770.1 | 2740.0 | 8.22 |
| 650.1 | 1110.0 | 7.67 | 2250.1 | 2740.0 | 8.17 | 710.1 | 2800.0 | 8.16 |
| 610.1 | 1150.0 | 7.53 | 2330.1 | 2820.0 | 8.87 | 670.1 | 2840.0 | 8.21 |
| 570.1 | 1190.0 | 7.28 | 2430.1 | 2920.0 | 9.02 | 610.1 | 2900.0 | 8.16 |
| 530.1 | 1230.0 | 7.11 | 2510.1 | 3000.0 | 8.97 | 570.1 | 2940.0 | 8.18 |
| 490.1 | 1270.0 | 6.90 | 2610.1 | 3100.0 | 8.78 | 510.1 | 3000.0 | 8.24 |
| 450.1 | 1310.0 | 6.90 | 2690.1 | 3180.0 | 8.74 | 470.1 | 3040.0 | 8.45 |
| 410.1 | 1350.0 | 6.95 | 2790.1 | 3280.0 | 8.66 | 410.1 | 3100.0 | 8.53 |
| 370.1 | 1390.0 | 7.14 | 2870.1 | 3360.0 | 8.56 | 370.1 | 3140.0 | 8.63 |
| 310.1 | 1450.0 | 7.08 | 2970.1 | 3460.0 | 8.58 | 310.1 | 3200.0 | 8.47 |
| 270.1 | 1490.0 | 6.95 | 3050.1 | 3540.0 | 9.20 | 270.1 | 3240.0 | 8.55 |
| 210.1 | 1550.0 | 6.53 | 3150.1 | 3640.0 | 9.01 | 210.1 | 3300.0 | 8.28 |
| 170.1 | 1590.0 | 6.48 | 3230.1 | 3720.0 | 9.35 | 170.1 | 3340.0 | 8.27 |
| 110.1 | 1650.0 | 6.54 | 3330.1 | 3820.0 | 10.50 | 110.1 | 3400.0 | 8.04 |
| 70.1 | 1690.0 | 6.58 | 3410.1 | 3900.0 | 10.81 | 70.1 | 3440.0 | 8.05 |
| 10.1 | 1750.0 | 6.79 | 3510.1 | 4000.0 | 12.68 | 10.1 | 3500.0 | 8.05 |



Frequency Mixer

MCA-35LH+

Typical Performance Data

| LO (MHz) | LO-RF ISOLATION (dB) | | | LO-IF ISOLATION (dB) | | |
|-------------|-------------------------|-------|-------|-------------------------|-------|-------|
| | @LO (dBm) | | | @LO (dBm) | | |
| | +7 | +10 | +13 | +7 | +10 | +13 |
| 170.0 | 10.86 | 12.07 | 14.07 | 32.88 | 37.43 | 40.95 |
| 270.0 | 9.29 | 11.63 | 14.05 | 36.95 | 39.49 | 41.18 |
| 370.0 | 10.86 | 13.28 | 15.62 | 34.73 | 35.81 | 36.90 |
| 470.0 | 12.29 | 14.49 | 16.64 | 31.14 | 32.38 | 33.69 |
| 570.0 | 14.26 | 16.30 | 18.24 | 29.39 | 30.79 | 32.03 |
| 670.0 | 16.53 | 18.36 | 20.09 | 27.91 | 29.36 | 30.39 |
| 770.0 | 18.90 | 20.51 | 22.01 | 27.27 | 28.64 | 29.23 |
| 870.0 | 21.03 | 22.79 | 24.26 | 26.79 | 27.77 | 27.78 |
| 970.0 | 22.91 | 25.46 | 27.93 | 26.63 | 26.80 | 26.28 |
| 1070.0 | 23.84 | 26.74 | 30.31 | 26.64 | 26.48 | 25.68 |
| 1170.0 | 23.74 | 27.54 | 33.06 | 26.29 | 25.97 | 25.14 |
| 1270.0 | 23.04 | 27.81 | 35.55 | 25.78 | 25.59 | 24.96 |
| 1370.0 | 22.20 | 28.08 | 41.52 | 24.88 | 25.11 | 24.75 |
| 1470.0 | 24.23 | 33.27 | 32.50 | 24.28 | 24.78 | 25.09 |
| 1570.0 | 31.29 | 35.38 | 28.94 | 25.19 | 26.20 | 27.12 |
| 1670.0 | 40.28 | 31.29 | 28.27 | 26.84 | 28.58 | 29.33 |
| 1770.0 | 38.44 | 31.95 | 29.92 | 28.66 | 30.75 | 30.68 |
| 1870.0 | 34.68 | 31.12 | 29.74 | 29.82 | 31.62 | 30.74 |
| 1970.0 | 32.23 | 30.96 | 30.81 | 29.13 | 31.03 | 30.67 |
| 2070.0 | 30.73 | 29.73 | 29.60 | 29.57 | 32.40 | 32.78 |
| 2170.0 | 31.09 | 30.40 | 30.24 | 35.63 | 34.54 | 32.27 |
| 2270.0 | 29.53 | 29.91 | 30.38 | 31.80 | 32.09 | 31.35 |
| 2370.0 | 27.47 | 28.61 | 29.67 | 27.80 | 30.62 | 31.70 |
| 2470.0 | 26.92 | 28.21 | 29.66 | 28.58 | 31.55 | 33.05 |
| 2570.0 | 27.26 | 28.82 | 30.37 | 32.43 | 33.70 | 33.19 |
| 2670.0 | 27.47 | 29.38 | 31.03 | 30.45 | 31.24 | 31.36 |
| 2770.0 | 27.08 | 29.51 | 31.53 | 29.59 | 30.77 | 31.21 |
| 2870.0 | 26.88 | 30.11 | 32.85 | 28.00 | 29.29 | 29.94 |
| 2970.0 | 25.67 | 28.78 | 32.27 | 26.27 | 27.33 | 28.13 |
| 3070.0 | 25.57 | 28.30 | 31.77 | 25.00 | 25.80 | 26.38 |
| 3170.0 | 26.35 | 29.43 | 33.64 | 23.77 | 23.73 | 24.48 |
| 3270.0 | 26.14 | 28.99 | 33.57 | 24.44 | 23.78 | 24.56 |
| 3370.0 | 26.70 | 29.57 | 33.17 | 23.62 | 23.01 | 23.37 |
| 3470.0 | 26.13 | 27.94 | 30.27 | 22.74 | 21.56 | 21.89 |
| 3570.0 | 25.00 | 25.37 | 26.10 | 24.25 | 22.91 | 22.85 |
| 3670.0 | 22.29 | 21.49 | 21.49 | 24.67 | 24.18 | 24.18 |
| 3750.0 | 17.27 | 17.08 | 17.34 | 24.45 | 24.02 | 23.63 |
| 3850.0 | 14.24 | 15.72 | 17.28 | 24.90 | 24.06 | 23.01 |
| 3930.0 | 14.11 | 16.30 | 18.83 | 25.63 | 23.37 | 21.27 |
| 4030.0 | 13.86 | 15.13 | 16.37 | 27.65 | 25.70 | 23.59 |

| RF (IN) (MHz) | LO (MHz) | RF-IF ISOLATION (dB) | | |
|---------------------|-------------|-------------------------|-------|-------|
| | | @LO (dBm) | | |
| | | +7 | +10 | +13 |
| 140.0 | 170.0 | 31.28 | 33.27 | 34.85 |
| 240.0 | 270.0 | 30.90 | 32.34 | 33.22 |
| 340.0 | 370.0 | 31.14 | 32.46 | 33.55 |
| 440.0 | 470.0 | 31.22 | 32.30 | 33.31 |
| 540.0 | 570.0 | 34.31 | 34.77 | 33.93 |
| 640.0 | 670.0 | 36.69 | 34.67 | 33.09 |
| 740.0 | 770.0 | 36.90 | 34.51 | 33.09 |
| 840.0 | 870.0 | 47.33 | 46.87 | 40.24 |
| 940.0 | 970.0 | 38.57 | 38.49 | 35.71 |
| 1040.0 | 1070.0 | 32.62 | 32.44 | 32.50 |
| 1140.0 | 1170.0 | 28.96 | 29.22 | 29.37 |
| 1240.0 | 1270.0 | 26.37 | 25.83 | 25.87 |
| 1340.0 | 1370.0 | 25.54 | 24.17 | 23.36 |
| 1440.0 | 1470.0 | 23.65 | 22.40 | 21.98 |
| 1540.0 | 1570.0 | 23.77 | 22.09 | 21.49 |
| 1640.0 | 1670.0 | 25.37 | 24.08 | 23.43 |
| 1740.0 | 1770.0 | 27.48 | 26.95 | 26.60 |
| 1840.0 | 1870.0 | 28.49 | 27.75 | 27.29 |
| 1940.0 | 1970.0 | 32.06 | 31.30 | 30.64 |
| 2040.0 | 2070.0 | 27.61 | 28.37 | 28.52 |
| 2140.0 | 2170.0 | 27.56 | 27.28 | 27.06 |
| 2240.0 | 2270.0 | 29.71 | 28.89 | 28.42 |
| 2340.0 | 2370.0 | 34.75 | 37.00 | 37.50 |
| 2440.0 | 2470.0 | 24.37 | 25.75 | 26.73 |
| 2540.0 | 2570.0 | 23.19 | 24.02 | 25.02 |
| 2640.0 | 2670.0 | 24.00 | 24.57 | 25.22 |
| 2740.0 | 2770.0 | 23.57 | 24.57 | 25.68 |
| 2840.0 | 2870.0 | 23.89 | 24.23 | 24.43 |
| 2940.0 | 2970.0 | 26.86 | 27.36 | 27.39 |
| 3040.0 | 3070.0 | 29.35 | 32.36 | 32.63 |
| 3140.0 | 3170.0 | 26.78 | 31.29 | 33.89 |
| 3240.0 | 3270.0 | 24.87 | 27.01 | 28.51 |
| 3340.0 | 3370.0 | 25.43 | 28.02 | 29.65 |
| 3440.0 | 3470.0 | 23.84 | 25.25 | 26.05 |
| 3540.0 | 3570.0 | 23.40 | 24.25 | 24.83 |
| 3640.0 | 3670.0 | 24.22 | 24.64 | 25.05 |
| 3720.0 | 3750.0 | 25.19 | 24.79 | 24.17 |
| 3820.0 | 3850.0 | 31.73 | 29.34 | 26.83 |
| 3900.0 | 3930.0 | 39.64 | 36.61 | 31.96 |
| 4000.0 | 4030.0 | 30.88 | 29.56 | 28.50 |

Frequency Mixer

MCA-35LH+

Typical Performance Data

| RF (IN) (MHz) | LO (MHz) | RF VSWR (:1) | | |
|---------------|----------|--------------|------|------|
| | | @LO (dBm) | | |
| | | +7 | +10 | +13 |
| 140.0 | 170.0 | 8.60 | 7.66 | 7.60 |
| 240.0 | 270.0 | 4.01 | 3.87 | 3.79 |
| 340.0 | 370.0 | 2.30 | 2.23 | 2.19 |
| 440.0 | 470.0 | 1.75 | 1.63 | 1.55 |
| 540.0 | 570.0 | 1.78 | 1.61 | 1.49 |
| 640.0 | 670.0 | 2.25 | 2.03 | 1.87 |
| 740.0 | 770.0 | 2.82 | 2.49 | 2.30 |
| 840.0 | 870.0 | 3.54 | 3.08 | 2.82 |
| 940.0 | 970.0 | 4.15 | 3.55 | 3.21 |
| 1040.0 | 1070.0 | 4.53 | 3.92 | 3.53 |
| 1140.0 | 1170.0 | 4.41 | 3.86 | 3.47 |
| 1240.0 | 1270.0 | 3.76 | 3.30 | 3.07 |
| 1340.0 | 1370.0 | 3.24 | 2.85 | 2.64 |
| 1440.0 | 1470.0 | 2.54 | 2.28 | 2.14 |
| 1540.0 | 1570.0 | 2.42 | 2.18 | 2.07 |
| 1640.0 | 1670.0 | 2.59 | 2.22 | 2.04 |
| 1740.0 | 1770.0 | 2.59 | 2.24 | 2.02 |
| 1840.0 | 1870.0 | 2.42 | 2.11 | 1.92 |
| 1940.0 | 1970.0 | 2.21 | 1.95 | 1.79 |
| 2040.0 | 2070.0 | 1.92 | 1.71 | 1.60 |
| 2140.0 | 2170.0 | 1.85 | 1.66 | 1.54 |
| 2240.0 | 2270.0 | 1.68 | 1.53 | 1.43 |
| 2340.0 | 2370.0 | 1.64 | 1.50 | 1.41 |
| 2440.0 | 2470.0 | 1.73 | 1.58 | 1.50 |
| 2540.0 | 2570.0 | 1.95 | 1.83 | 1.74 |
| 2640.0 | 2670.0 | 2.19 | 2.11 | 2.05 |
| 2740.0 | 2770.0 | 2.57 | 2.53 | 2.49 |
| 2840.0 | 2870.0 | 2.99 | 2.94 | 2.94 |
| 2940.0 | 2970.0 | 3.56 | 3.43 | 3.40 |
| 3040.0 | 3070.0 | 4.25 | 3.99 | 3.88 |
| 3140.0 | 3170.0 | 4.91 | 4.37 | 4.16 |
| 3240.0 | 3270.0 | 5.28 | 4.56 | 4.22 |
| 3340.0 | 3370.0 | 5.31 | 4.51 | 4.10 |
| 3440.0 | 3470.0 | 5.10 | 4.13 | 3.73 |
| 3540.0 | 3570.0 | 4.61 | 3.77 | 3.30 |
| 3640.0 | 3670.0 | 3.84 | 3.25 | 2.86 |
| 3720.0 | 3750.0 | 2.82 | 2.43 | 2.18 |
| 3820.0 | 3850.0 | 2.12 | 1.81 | 1.62 |
| 3900.0 | 3930.0 | 2.11 | 1.84 | 1.68 |
| 4000.0 | 4030.0 | 1.67 | 1.48 | 1.33 |

| LO (MHz) | LO VSWR (:1) | | |
|----------|--------------|------|------|
| | @LO (dBm) | | |
| | +7 | +10 | +13 |
| 170.0 | 9.08 | 6.11 | 4.86 |
| 270.0 | 3.05 | 2.68 | 2.86 |
| 370.0 | 1.79 | 1.88 | 2.35 |
| 470.0 | 1.26 | 1.49 | 2.02 |
| 570.0 | 1.24 | 1.25 | 1.78 |
| 670.0 | 1.56 | 1.15 | 1.57 |
| 770.0 | 1.95 | 1.26 | 1.39 |
| 870.0 | 2.31 | 1.38 | 1.21 |
| 970.0 | 2.59 | 1.52 | 1.10 |
| 1070.0 | 2.71 | 1.58 | 1.06 |
| 1170.0 | 2.80 | 1.70 | 1.28 |
| 1270.0 | 2.86 | 1.75 | 1.39 |
| 1370.0 | 2.65 | 1.77 | 1.55 |
| 1470.0 | 2.76 | 1.88 | 1.69 |
| 1570.0 | 2.62 | 1.85 | 1.76 |
| 1670.0 | 2.37 | 1.74 | 1.79 |
| 1770.0 | 2.10 | 1.67 | 1.85 |
| 1870.0 | 1.81 | 1.59 | 1.90 |
| 1970.0 | 1.72 | 1.66 | 2.02 |
| 2070.0 | 1.63 | 1.63 | 2.04 |
| 2170.0 | 1.33 | 1.51 | 2.02 |
| 2270.0 | 1.14 | 1.48 | 2.04 |
| 2370.0 | 1.05 | 1.50 | 2.07 |
| 2470.0 | 1.22 | 1.59 | 2.14 |
| 2570.0 | 1.35 | 1.64 | 2.16 |
| 2670.0 | 1.51 | 1.64 | 2.09 |
| 2770.0 | 1.83 | 1.75 | 2.08 |
| 2870.0 | 2.29 | 1.95 | 2.09 |
| 2970.0 | 2.80 | 2.15 | 2.06 |
| 3070.0 | 3.35 | 2.35 | 1.99 |
| 3170.0 | 3.94 | 2.53 | 1.89 |
| 3270.0 | 4.41 | 2.64 | 1.80 |
| 3370.0 | 4.79 | 2.77 | 1.81 |
| 3470.0 | 4.61 | 2.75 | 1.92 |
| 3570.0 | 4.05 | 2.64 | 2.11 |
| 3670.0 | 3.27 | 2.57 | 2.39 |
| 3750.0 | 2.92 | 2.56 | 2.46 |
| 3850.0 | 2.11 | 1.99 | 2.04 |
| 3930.0 | 1.66 | 1.89 | 2.20 |
| 4030.0 | 2.46 | 2.68 | 2.99 |

| IF (OUT) (MHz) | IF VSWR @LO=3500MHz (:1) | | |
|----------------|--------------------------|------|------|
| | @LO (dBm) | | |
| | +7 | +10 | +13 |
| 10.0 | 1.03 | 1.40 | 1.69 |
| 70.0 | 1.10 | 1.42 | 1.68 |
| 130.0 | 1.16 | 1.43 | 1.68 |
| 190.0 | 1.24 | 1.43 | 1.65 |
| 250.0 | 1.34 | 1.49 | 1.68 |
| 310.0 | 1.44 | 1.54 | 1.69 |
| 350.0 | 1.53 | 1.58 | 1.70 |
| 410.0 | 1.66 | 1.65 | 1.72 |
| 450.0 | 1.78 | 1.72 | 1.74 |
| 510.0 | 1.93 | 1.72 | 1.65 |
| 550.0 | 1.94 | 1.65 | 1.53 |
| 610.0 | 1.81 | 1.50 | 1.38 |
| 650.0 | 1.72 | 1.40 | 1.27 |
| 710.0 | 1.56 | 1.24 | 1.13 |
| 750.0 | 1.46 | 1.14 | 1.07 |
| 810.0 | 1.42 | 1.16 | 1.20 |
| 850.0 | 1.37 | 1.22 | 1.33 |
| 910.0 | 1.44 | 1.38 | 1.51 |
| 950.0 | 1.46 | 1.49 | 1.66 |
| 1010.0 | 1.53 | 1.65 | 1.85 |
| 1050.0 | 1.60 | 1.80 | 2.01 |
| 1110.0 | 1.72 | 1.89 | 2.06 |
| 1150.0 | 1.83 | 2.01 | 2.13 |
| 1210.0 | 1.96 | 2.06 | 2.11 |
| 1250.0 | 2.01 | 2.05 | 2.07 |
| 1310.0 | 1.93 | 1.87 | 1.85 |
| 1350.0 | 1.86 | 1.80 | 1.80 |
| 1410.0 | 1.61 | 1.55 | 1.57 |
| 1450.0 | 1.50 | 1.50 | 1.57 |
| 1510.0 | 1.35 | 1.49 | 1.62 |
| 1550.0 | 1.35 | 1.56 | 1.73 |
| 1610.0 | 1.44 | 1.77 | 1.99 |
| 1650.0 | 1.54 | 1.92 | 2.16 |
| 1710.0 | 1.69 | 2.15 | 2.44 |
| 1750.0 | 1.81 | 2.34 | 2.67 |
| 1810.0 | 2.00 | 2.62 | 3.01 |
| 1850.0 | 2.09 | 2.75 | 3.16 |
| 1910.0 | 2.24 | 2.97 | 3.43 |
| 1950.0 | 2.30 | 3.04 | 3.52 |
| 2010.0 | 2.36 | 3.13 | 3.62 |

Harmonics Tables

RF HARMONICS ORDER

| | (-dBm) | (-dBc) | | | | | | | | | | |
|----|--------|--------|-----|-----|-----|-----|-----|-----|-----|-----|-----|-----|
| 0 | - | - | 6 | 16 | 8 | 26 | 14 | 32 | 33 | 51 | 53 | 53 |
| 1 | - | 26 | +0 | 32 | 14 | 38 | 33 | 39 | 50 | 52 | 60 | 53 |
| 2 | 76 | 51 | 56 | 53 | 57 | 56 | 49 | 62 | 53 | 66 | 62 | 74 |
| 3 | >90 | 65 | 63 | 65 | 63 | 72 | 69 | 74 | 72 | >75 | >75 | >75 |
| 4 | >90 | >75 | >75 | >75 | >75 | >75 | >75 | >75 | >75 | >75 | >75 | >75 |
| 5 | >90 | >75 | >75 | >75 | >75 | >75 | >75 | >75 | >75 | >75 | >75 | >75 |
| 6 | >90 | >75 | >75 | >75 | >75 | >75 | >75 | >75 | >75 | >75 | >75 | >75 |
| 7 | >90 | >75 | >75 | >75 | >75 | >75 | >75 | >75 | >75 | >75 | >75 | >75 |
| 8 | >90 | >75 | >75 | >75 | >75 | >75 | >75 | >75 | >75 | >75 | >75 | >75 |
| 9 | >90 | >75 | >75 | >75 | >75 | >75 | >75 | >75 | >75 | >75 | >75 | >75 |
| 10 | >90 | >75 | >75 | >75 | >75 | >75 | >75 | >75 | >75 | >75 | >75 | >75 |
| | RF CAL | 0 | 1 | 2 | 3 | 4 | 5 | 6 | 7 | 8 | 9 | 10 |

Test conditions: RF IN: 2000 MHz; -9.00 dBm.
 LO IN: 2030 MHz; +10.00 dBm
 IF OUT: 30 MHz; -15.42 dBm

RF HARMONICS ORDER

| | (-dBm) | (-dBc) | | | | | | | | | | |
|----|--------|--------|-----|-----|-----|-----|-----|-----|-----|-----|-----|-----|
| 0 | - | - | 16 | 24 | 20 | 39 | 26 | 46 | 47 | 62 | 64 | 67 |
| 1 | - | 25 | +0 | 31 | 14 | 43 | 33 | 44 | 50 | 60 | 65 | 59 |
| 2 | 56 | 42 | 46 | 42 | 42 | 48 | 41 | 58 | 44 | 58 | 57 | 80 |
| 3 | >90 | 46 | 44 | 45 | 41 | 52 | 45 | 69 | 55 | 65 | 69 | 67 |
| 4 | >90 | 63 | 62 | 71 | 66 | 71 | 69 | 67 | 63 | 74 | 64 | 75 |
| 5 | >90 | 71 | 70 | 64 | 67 | 66 | 63 | 78 | 66 | 73 | 69 | >84 |
| 6 | >90 | >84 | 82 | 79 | 77 | 82 | 78 | 77 | 77 | >84 | 74 | 81 |
| 7 | >90 | >84 | >84 | >84 | >84 | 77 | 82 | 83 | 78 | 83 | 79 | 83 |
| 8 | >90 | >84 | >84 | >84 | >84 | >84 | >84 | >84 | >84 | >84 | 84 | >84 |
| 9 | >90 | >84 | >84 | >84 | >84 | >84 | >84 | >84 | >84 | >84 | >84 | >84 |
| 10 | >90 | >84 | >84 | >84 | >84 | >84 | >84 | >84 | >84 | >84 | >84 | >84 |
| | RF CAL | 0 | 1 | 2 | 3 | 4 | 5 | 6 | 7 | 8 | 9 | 10 |

LO HARMONICS ORDER

Test conditions: RF IN: 2000 MHz; 1.00 dBm.
 LO IN: 2030 MHz; +10.00 dBm
 IF OUT: 30 MHz; -5.51 dBm

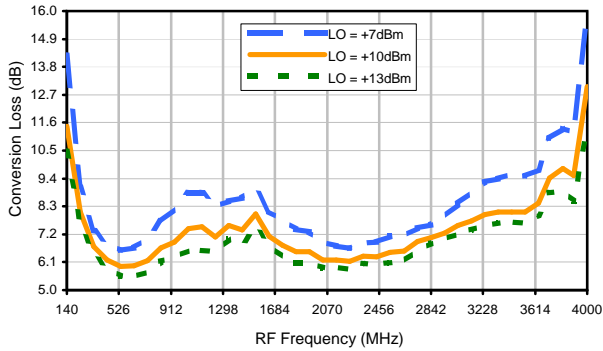
- Notes: 1. All Harmonics are in (dBc) relative to IF OUTPUT.
 2. + entry denotes harmonics are in (dBc) above IF OUTPUT.
 3. RF Cal represent the Harmonics level of the RF input signal to the mixer.

Frequency Mixer

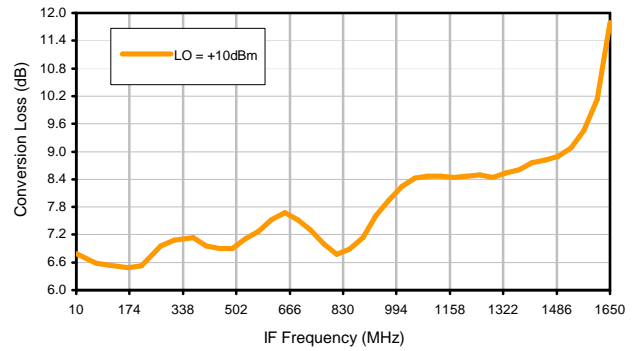
MCA-35LH+

Typical Performance Curves

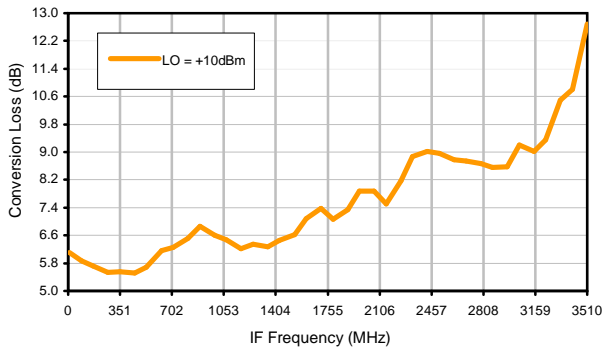
Conversion Loss @ IF=30MHz



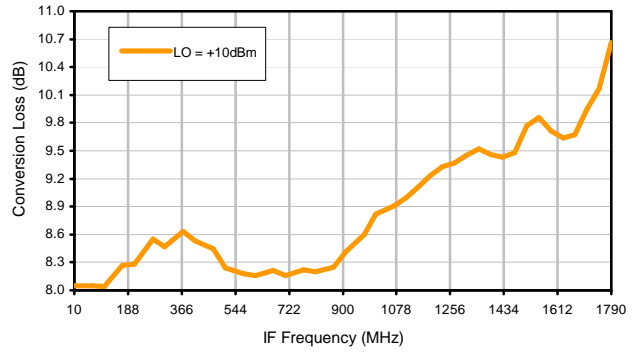
Conversion Loss vs. IF @ RF=1760.1MHz



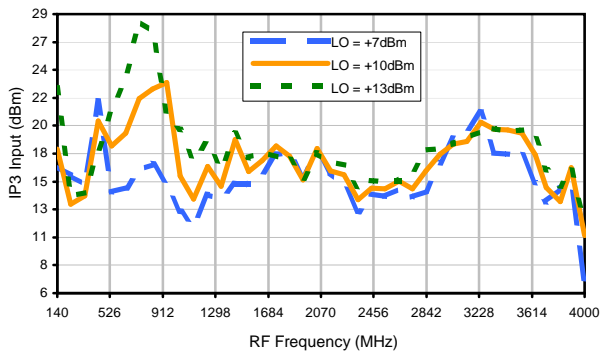
Conversion Loss vs. IF @ RF=489.9MHz



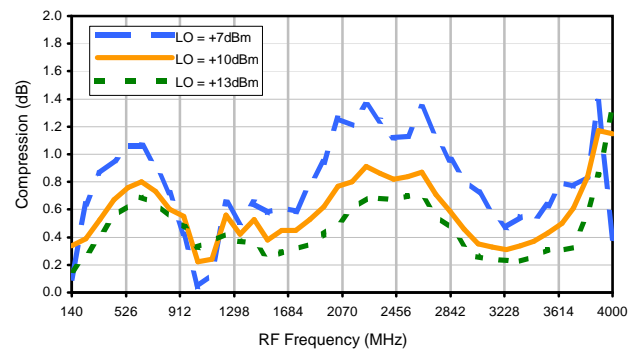
Conversion Loss vs. IF @ RF=3510.1MHz



IP3 Input

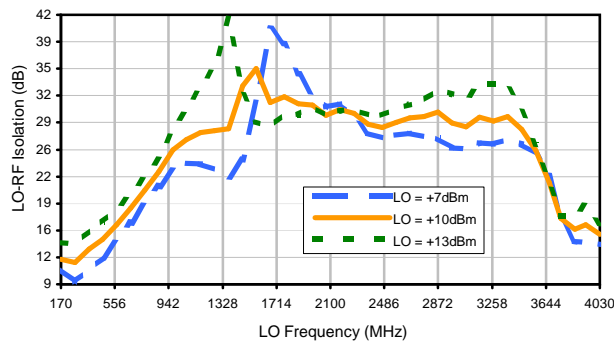


Compression @ RF IN=+6dBm

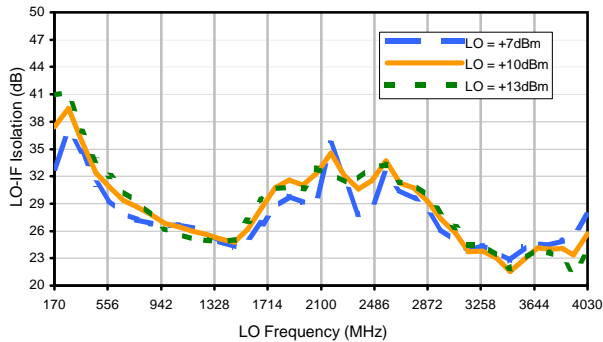


Typical Performance Curves

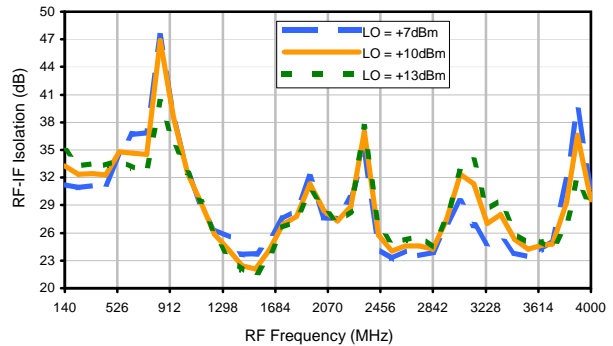
LO-RF Isolation



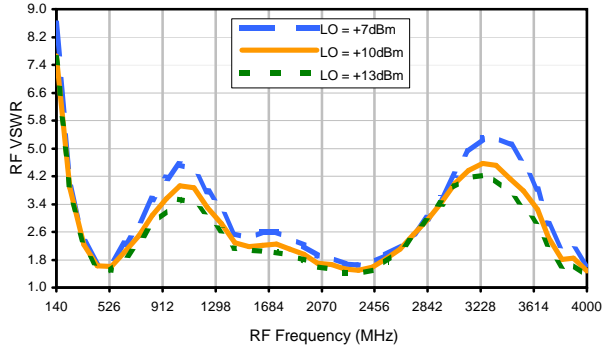
LO-IF Isolation



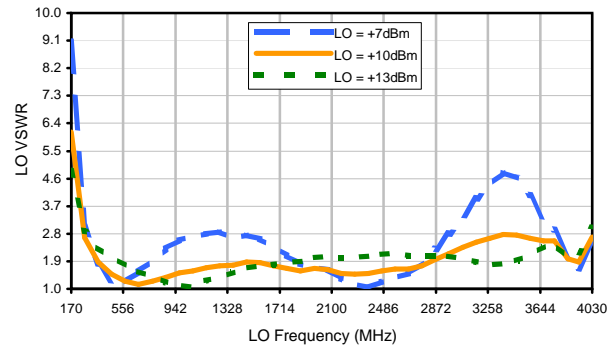
RF-IF Isolation



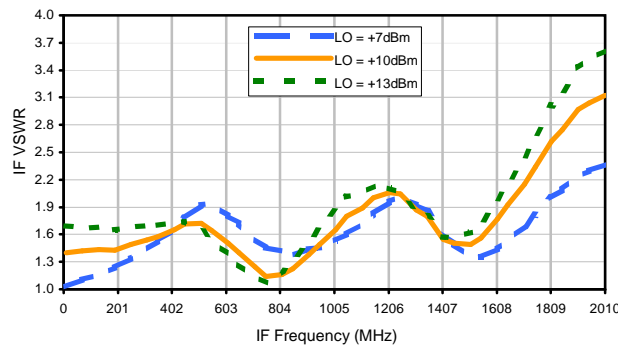
RF VSWR



LO VSWR



IF VSWR



Harmonics Tables

RF HARMONICS ORDER

| | (-dBm) | (-dBc) | | | | | | | | | | |
|----|--------|--------|-----|-----|-----|-----|-----|-----|-----|-----|-----|-----|
| 0 | - | - | 6 | 16 | 8 | 26 | 14 | 32 | 33 | 51 | 53 | 53 |
| 1 | - | 26 | +0 | 32 | 14 | 38 | 33 | 39 | 50 | 52 | 60 | 53 |
| 2 | 76 | 51 | 56 | 53 | 57 | 56 | 49 | 62 | 53 | 66 | 62 | 74 |
| 3 | >90 | 65 | 63 | 65 | 63 | 72 | 69 | 74 | 72 | >75 | >75 | >75 |
| 4 | >90 | >75 | >75 | >75 | >75 | >75 | >75 | >75 | >75 | >75 | >75 | >75 |
| 5 | >90 | >75 | >75 | >75 | >75 | >75 | >75 | >75 | >75 | >75 | >75 | >75 |
| 6 | >90 | >75 | >75 | >75 | >75 | >75 | >75 | >75 | >75 | >75 | >75 | >75 |
| 7 | >90 | >75 | >75 | >75 | >75 | >75 | >75 | >75 | >75 | >75 | >75 | >75 |
| 8 | >90 | >75 | >75 | >75 | >75 | >75 | >75 | >75 | >75 | >75 | >75 | >75 |
| 9 | >90 | >75 | >75 | >75 | >75 | >75 | >75 | >75 | >75 | >75 | >75 | >75 |
| 10 | >90 | >75 | >75 | >75 | >75 | >75 | >75 | >75 | >75 | >75 | >75 | >75 |
| | RF CAL | 0 | 1 | 2 | 3 | 4 | 5 | 6 | 7 | 8 | 9 | 10 |

Test conditions: RF IN: 2000 MHz; -9.00 dBm.
 LO IN: 2030 MHz; +10.00 dBm
 IF OUT: 30 MHz; -15.42 dBm

RF HARMONICS ORDER

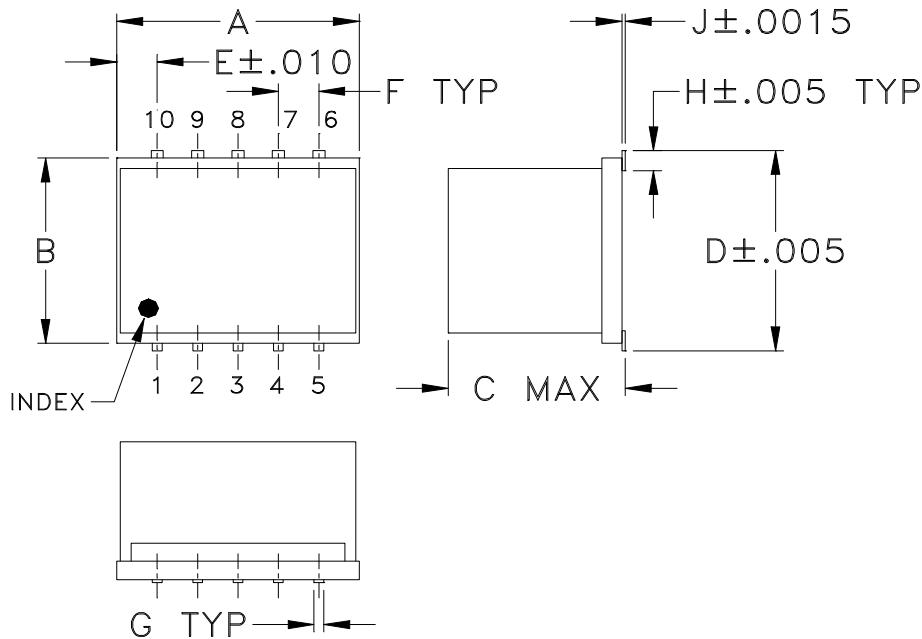
| | (-dBm) | (-dBc) | | | | | | | | | | |
|----|--------|--------|-----|-----|-----|-----|-----|-----|-----|-----|-----|-----|
| 0 | - | - | 16 | 24 | 20 | 39 | 26 | 46 | 47 | 62 | 64 | 67 |
| 1 | - | 25 | +0 | 31 | 14 | 43 | 33 | 44 | 50 | 60 | 65 | 59 |
| 2 | 56 | 42 | 46 | 42 | 42 | 48 | 41 | 58 | 44 | 58 | 57 | 80 |
| 3 | >90 | 46 | 44 | 45 | 41 | 52 | 45 | 69 | 55 | 65 | 69 | 67 |
| 4 | >90 | 63 | 62 | 71 | 66 | 71 | 69 | 67 | 63 | 74 | 64 | 75 |
| 5 | >90 | 71 | 70 | 64 | 67 | 66 | 63 | 78 | 66 | 73 | 69 | >84 |
| 6 | >90 | >84 | 82 | 79 | 77 | 82 | 78 | 77 | 77 | >84 | 74 | 81 |
| 7 | >90 | >84 | >84 | >84 | >84 | 77 | 82 | 83 | 78 | 83 | 79 | 83 |
| 8 | >90 | >84 | >84 | >84 | >84 | >84 | >84 | >84 | >84 | >84 | 84 | >84 |
| 9 | >90 | >84 | >84 | >84 | >84 | >84 | >84 | >84 | >84 | >84 | >84 | >84 |
| 10 | >90 | >84 | >84 | >84 | >84 | >84 | >84 | >84 | >84 | >84 | >84 | >84 |
| | RF CAL | 0 | 1 | 2 | 3 | 4 | 5 | 6 | 7 | 8 | 9 | 10 |

LO HARMONICS ORDER

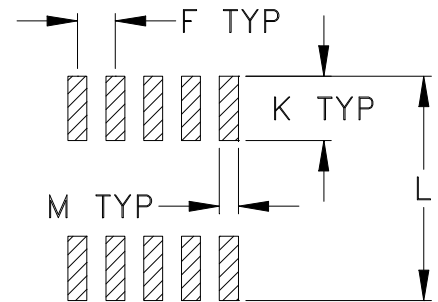
Test conditions: RF IN: 2000 MHz; 1.00 dBm.
 LO IN: 2030 MHz; +10.00 dBm
 IF OUT: 30 MHz; -5.51 dBm

- Notes: 1. All Harmonics are in (dBc) relative to IF OUTPUT.
 2. + entry denotes harmonics are in (dBc) above IF OUTPUT.
 3. RF Cal represent the Harmonics level of the RF input signal to the mixer.

Outline Dimensions



PCB Land Pattern



Suggested Layout,
Tolerance to be within $\pm.002$

| CASE# | A | B | C | D | E | F | G | H | J | K | L | M | WT. GRAMS |
|-------|---------------|----------------|----------------|----------------|----------------|----------------|----------------|----------------|----------------|----------------|----------------|----------------|--------------|
| DZ883 | .30 (7.62) | .250 (6.35) | .190 (4.83) | .266 (6.76) | .050 (1.27) | .050 (1.27) | .012 (0.30) | .029 (0.74) | .004 (0.10) | .085 (2.16) | .296 (7.52) | .030 (0.76) | 0.5 |

Dimensions are in inches (mm). Tolerances: 2Pl. $\pm.01$; 3Pl. $\pm.005$

Notes:

- Case material: Ceramic.
- Termination finish:
 - For RoHS Case Styles: Tin plate. All models, (+) suffix.
 - For RoHS-5 Case Styles: Tin-Lead plate. All models, no (+) suffix.



INTERNET <http://www.minicircuits.com>

P.O. Box 350166, Brooklyn, New York 11235-0003 (718) 934-4500 Fax (718) 332-4661
 Distribution Centers NORTH AMERICA 800-654-7949 • 417-335-5935 • Fax 417-335-5945 • EUROPE 44-1252-832600 • Fax 44-1252-837010
 Mini-Circuits ISO 9001 & ISO 14001 Certified

Tape & Reel Packaging TR-F34



| Tape Width, mm | Device Cavity Pitch, mm | Reel Size, inches | Devices per Reel see note | |
|----------------|-------------------------|-------------------|------------------------------------|------|
| 16 | 12 | 7 | Small quantity standard (see note) | 20 |
| | | | | 50 |
| | | | | 100 |
| | | | | 200 |
| | | 13 | Standard | 500 |
| | | | | 1000 |

Note: Availability of small reel quantity varies by model.
Refer to pricing and availability on individual model dashboard.

Mini-Circuits carrier tape materials provide protection from ESD (Electro-Static Discharge) during handling and transportation. Tapes are static dissipative and comply with industry standards EIA-481/EIA-541.

Go to: www.minicircuits.com/pages/pdfs/tape.pdf



INTERNET <http://www.minicircuits.com>

P.O. Box 350166, Brooklyn, New York 11235-0003 (718) 934-4500 Fax (718) 332-4661

Distribution Centers NORTH AMERICA 800-654-7949 • 417-335-5935 • Fax 417-335-5945 • EUROPE 44-1252-832600 • Fax 44-1252-837010

Mini-Circuits ISO 9001 & ISO 14001 Certified

THIRD ANGLE PROJECTION



REVISIONS

| REV | ECN No. | DESCRIPTION | DATE | DR | AUTH |
|-----|---------|---------------------------------|----------|-----|------|
| A | M81781 | UPDATED PCB LAYOUT | 06/07/02 | GF | DJ |
| B | M82377 | UPDATED DRAWING | 07/31/02 | AV | WL |
| C | M102713 | ADDED NOTE 2 & "...WITH SMOBC" | 01/17/06 | MMG | IL |
| D | M135488 | ADDED DZ1650, CHANGED PIN CONN. | 02/02/12 | GF | DJ |

SUGGESTED MOUNTING CONFIGURATION FOR
DZ883, DZ885 & DZ1650 CASE STYLES, "10MX01" PIN CONNECTION



- NOTES: 1. TRACE WIDTH IS SHOWN FOR ROGERS R04350B WITH DIELECTRIC THICKNESS .020" ± .0015"; COPPER: 1/2 OZ. EACH SIDE. FOR OTHER MATERIALS TRACE WIDTH MAY NEED TO BE MODIFIED.
2. BOTTOM SIDE OF THE PCB IS CONTINUOUS GROUND PLANE.



DENOTES PCB COPPER LAYOUT WITH SMOBC (SOLDER MASK OVER BARE COPPER)



DENOTES COPPER LAND PATTERN FREE OF SOLDER MASK

UNLESS OTHERWISE SPECIFIED

INITIALS

DATE

DIMENSIONS ARE IN INCHES

DRAWN

AV

05/08/02

TOLERANCES ON:

CHECKED

DB

05/16/02

2 PL DECIMALS ± .005

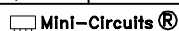
APPROVED

WL

05/16/02

ANGLES ±

FRACTIONS ±



THIS DOCUMENT AND ITS CONTENTS ARE THE PROPERTY OF MINI-CIRCUITS. EXCEPT FOR USE EXPRESSLY GRANTED, IN WRITING, TO ITS VENDORS, VENDEE AND THE UNITED STATES GOVERNMENT, MINI-CIRCUITS RESERVES ALL PROPRIETARY DESIGN, USE, MANUFACTURING AND REPRODUCTION RIGHTS THERETO. THESE CONTENTS SHALL NOT BE USED, DUPLICATED OR DISCLOSED TO ANY OUTSIDE PARTY, IN WHOLE OR IN PART, WITHOUT WRITTEN PERMISSION OF MINI-CIRCUITS.



Mini-Circuits®

13 Neptune Avenue
Brooklyn NY 11235

PL, 10MX01, DZ883/885/1650, TB-144

SIZE

CODE IDENT

DRAWING NO:

REV:

A

15542

98-PL-045

D

FILE:

98PL045

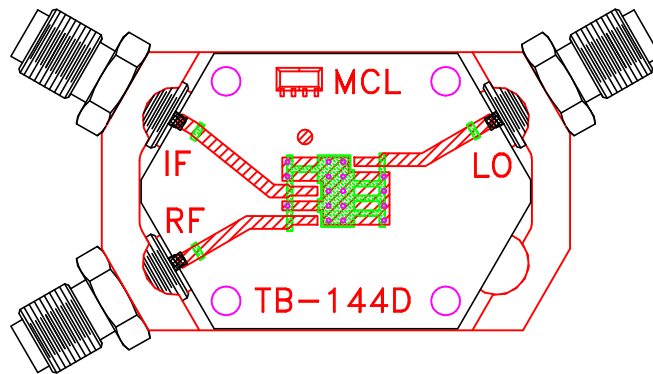
SCALE:

8:1

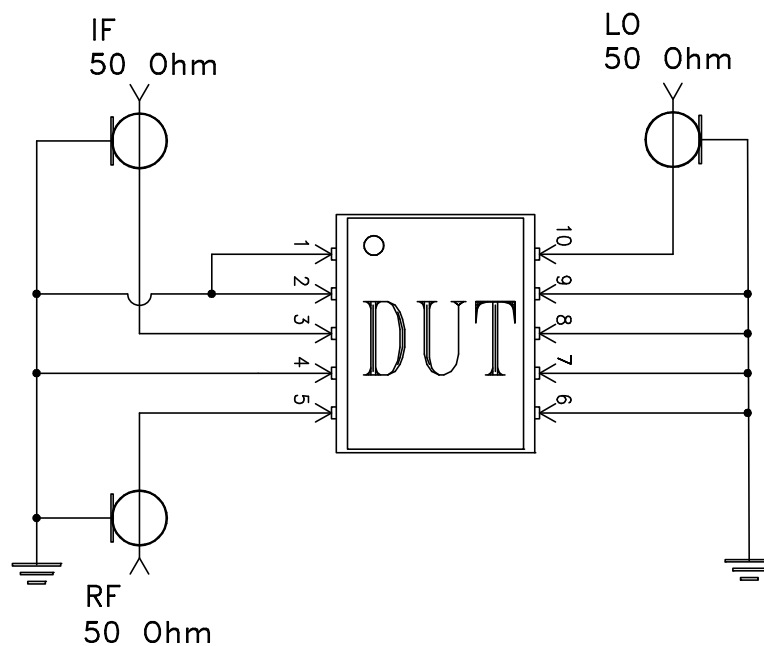
SHEET:

1 OF 1

Evaluation Board and Circuit



TB-144



Schematic Diagram

Notes:

1. SMA Female connectors.
2. PCB Material: Rogers R04350 or equivalent,
Dielectric Constant=3.5, Thickness=.020 inch.

 **Mini-Circuits®**



All Mini-Circuits products are manufactured under exacting quality assurance and control standards, and are capable of meeting published specifications after being subjected to any or all of the following physical and environmental test.

| Specification | Test/Inspection Condition | Reference/Spec |
|--------------------------------|---|---|
| Operating Temperature | -55° to 100°C Ambient Environment | Individual Model Data Sheet |
| Storage Temperature | -55° to 100° C Ambient Environment | Individual Model Data Sheet |
| Autoclave | 15 psig, 100% RH, 121°C, 96 hours | JESD22-A102-C, Condition C |
| Thermal Shock | -55° to 100°C, 100 cycles | MIL-STD-202, Method 107, Condition A-3, except +100°C |
| Solder Reflow Heat | Sn-Pb Eutectic Process: 225°C peak Pb-Free Process: 250°C peak | J-STD-020, Table 4-1, 4-2 and 5-2; Figure 5-1 |
| Solderability | 10X Magnification | J-STD-002, Para 4.2.5, Test S, 95% Coverage |
| Vibration (High Frequency) | 20g peak, 10-2000 Hz, 12 times in each of three perpendicular directions (total 36) | MIL-STD-202, Method 204, Condition D |
| Mechanical Shock | 50g, 11 ms, 1/2-sine, 18 shocks: 3 each direction, each of 3 axes | MIL-STD-202, Method 213, Condition A |
| Marking Resistance to Solvents | Isopropyl alcohol + mineral spirits at 25°C; terpene defluxer at 25°C; distilled water + proylene glycol monomethyl ether + monoethanolamine at 63°C to 70°C | MIL-STD-202, Method 215 |