

High IP3

Frequency Mixer

Level 17 (LO Power+17 dBm) 3500 to 3600 MHz

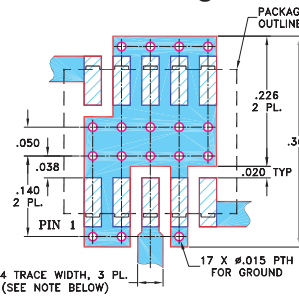
Maximum Ratings

Operating Temperature	-55°C to 100°C
Storage Temperature	-55°C to 100°C
LO & RF Power	20 dBm
Permanent damage may occur if any of these limits are exceeded.	

Pin Connections

LO	10
RF	5
IF	3
GROUND	1,2,4,6,7,8,9

Outline Drawing

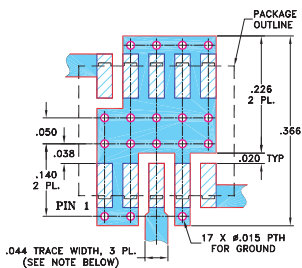


- NOTES: 1. TRACE WIDTH IS SHOWN FOR ROGERS RO435 THICKNESS .020" ± .0015"; COPPER: 1/2 OZ FOR OTHER MATERIALS TRACE WIDTH MAY NEED TO BE MODIFIED.
 2. BOTTOM SIDE OF THE PCB IS CONTINUOUS GR
 DENOTES PCB COPPER LAYOUT WITH SM (SOLDER MASK OVER BARE COPPER)
 DENOTES COPPER LAND PATTERN FREE

Outline Dimensions (inch/mm)

A	B	C	D	E	F	G
.30	.250	.190	.266	.050	.050	.012
7.62	6.35	4.83	6.76	1.27	1.27	0.30
H	J	K	L	M	wt	
.029	.004	.085	.296	.030	grams	
0.74	0.10	2.16	7.52	0.76	0.5	

Demo Board MCL P/N: TB-144 Suggested PCB Layout (PL-045)



- NOTES: 1. TRACE WIDTH IS SHOWN FOR ROGERS RO4350B WITH DIELECTRIC THICKNESS .020" ± .0015"; COPPER: 1/2 OZ. EACH SIDE. FOR OTHER MATERIALS TRACE WIDTH MAY NEED TO BE MODIFIED.
 2. BOTTOM SIDE OF THE PCB IS CONTINUOUS GROUND PLANE.
 DENOTES PCB COPPER LAYOUT WITH SMOBC (SOLDER MASK OVER BARE COPPER)
 DENOTES COPPER LAND PATTERN FREE OF SOLDER MASK

Notes

- A. Performance and quality attributes and conditions not expressly stated in this specification document are intended to be excluded and do not form a part of this specification document.
 B. Electrical specifications and performance data contained in this specification document are based on Mini-Circuit's applicable established test performance criteria and measurement instructions.
 C. The parts covered by this specification document are subject to Mini-Circuits standard limited warranty and terms and conditions (collectively, "Standard Terms"); Purchasers of this part are entitled to the rights and benefits contained therein. For a full statement of the Standard Terms and the exclusive rights and remedies thereunder, please visit Mini-Circuits' website at www.minicircuits.com/MCLStore/terms.jsp

Features

- excellent IP3, 33 dBm typ.
- excellent L-R isolation, 44 dB typ.
- excellent 1dB compression, RF>LO power
- industry standard foot print
- LTCC design for excellent temperature stability, performance repeatability and small size
- aqueous washable
- double balanced mixer
- low price
- protected by US Patent 6,959,180

Applications

- line of sight links
- satellite communications
- WiMAX

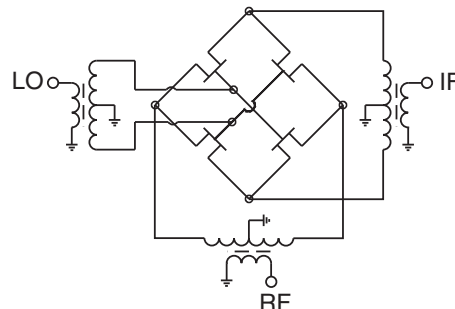
Electrical Specifications (T_{AMB} = -55°C to 100°C)

FREQUENCY (MHz)			IP3 (dBm)	RF in at 1 dB compr. (dBm)	CONVERSION LOSS (dB)		LO-RF ISOLATION (dB)		LO-IF ISOLATION (dB)	
RF	LO	IF			Typ.	Max.	Typ.	Min.	Typ.	Min.
3500-3600	3070-3170	380-480	33	17	8.3	9.2	44	20	29	15

Typical Performance Data

Frequency (MHz)		Conversion Loss (dB)	Isolation L-R (dB)	Isolation L-I (dB)	VSWR RF Port (:1)	VSWR LO Port (:1)	IP3 (dBm)
RF	LO	LO +17dBm	LO +17dBm	LO +17dBm	LO +17dBm	LO +17dBm	LO +17dBm
3500.00	3070.00	7.59	45.92	24.67	2.28	3.64	32.03
3510.00	3080.00	7.73	44.66	25.03	2.46	3.78	32.45
3520.00	3090.00	8.10	44.30	25.49	2.65	3.82	34.10
3530.00	3100.00	8.11	45.26	26.04	2.84	3.70	32.67
3540.00	3110.00	8.00	46.98	26.41	3.00	3.62	32.06
3550.00	3120.00	8.07	47.77	26.73	3.14	3.57	33.59
3560.00	3130.00	7.93	49.60	26.97	3.30	3.54	33.95
3570.00	3140.00	7.42	54.93	27.26	3.49	3.60	32.32
3580.00	3150.00	7.14	55.81	27.70	3.75	3.71	32.46
3590.00	3160.00	7.37	52.08	28.30	4.02	3.74	32.93
3600.00	3170.00	7.62	50.58	28.99	4.37	3.75	32.34

Electrical Schematic



CASE STYLE: DZ883

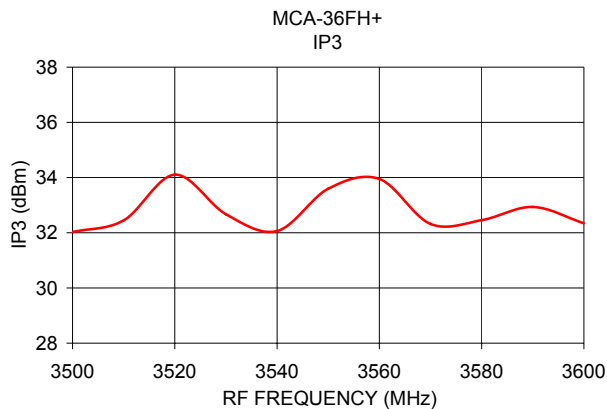
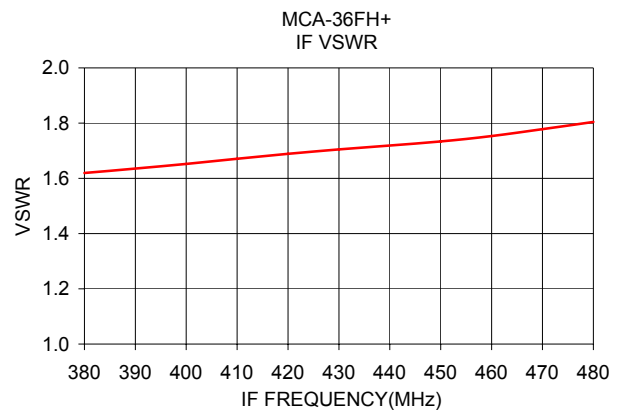
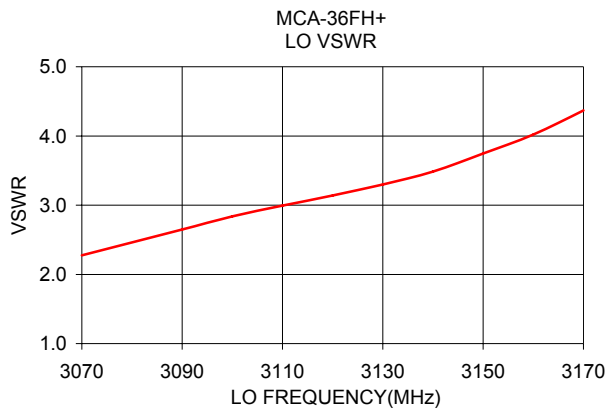
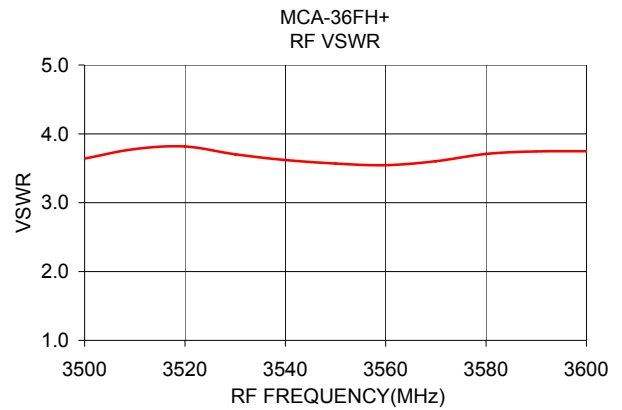
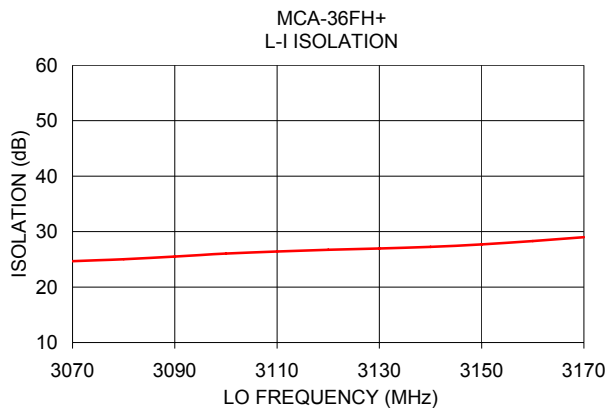
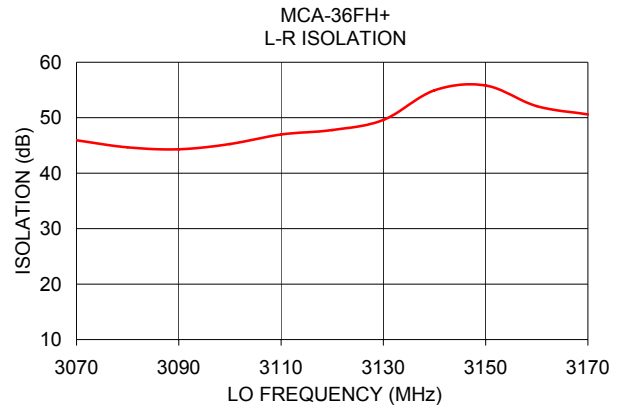
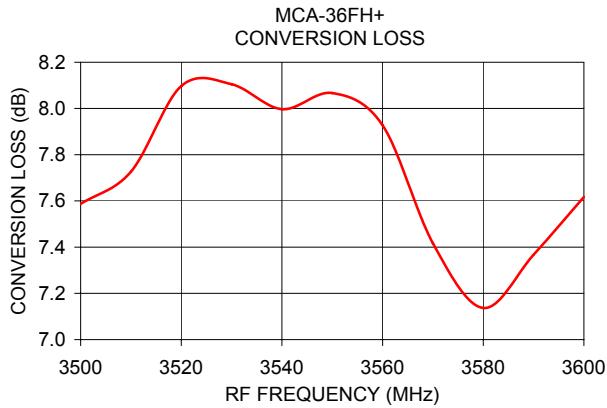
+RoHS Compliant

The +Suffix identifies RoHS Compliance. See our web site for RoHS Compliance methodologies and qualifications

Available Tape and Reel at no extra cost

Reel Size	Devices/Reel
7"	10, 20, 50, 100, 200
13"	500, 1000





Notes

- A. Performance and quality attributes and conditions not expressly stated in this specification document are intended to be excluded and do not form a part of this specification document.
- B. Electrical specifications and performance data contained in this specification document are based on Mini-Circuit's applicable established test performance criteria and measurement instructions.
- C. The parts covered by this specification document are subject to Mini-Circuits standard limited warranty and terms and conditions (collectively, "Standard Terms"); Purchasers of this part are entitled to the rights and benefits contained therein. For a full statement of the Standard Terms and the exclusive rights and remedies thereunder, please visit Mini-Circuits' website at www.minicircuits.com/MCLStore/terms.jsp



Typical Performance Data

RF (IN) (MHz)	LO (MHz)	CONVERSION LOSS IF FIXED @IF(OUT)=430MHz (dB)		
		@LO (dBm)		
		+14	+17	+20
2700.1	2270.1	16.56	13.26	11.31
2740.1	2310.1	16.25	12.76	10.65
2780.1	2350.1	16.29	12.76	10.59
2820.1	2390.1	14.65	11.70	9.73
2860.1	2430.1	14.57	11.73	9.61
2900.1	2470.1	13.35	10.72	8.93
2940.1	2510.1	12.74	10.22	9.25
2980.1	2550.1	12.17	9.90	8.40
3020.1	2590.1	11.01	9.12	7.96
3060.1	2630.1	10.98	9.07	7.98
3100.1	2670.1	9.89	8.38	7.71
3140.1	2710.1	9.57	8.27	7.63
3180.1	2750.1	9.01	7.97	7.50
3230.1	2800.1	8.34	7.74	7.50
3270.1	2840.1	7.93	7.63	7.52
3320.1	2890.1	7.60	7.48	7.52
3360.1	2930.1	7.54	7.45	7.47
3410.1	2980.1	7.62	7.63	7.71
3450.1	3020.1	7.70	7.76	7.86
3500.1	3070.1	7.76	7.89	8.05
3540.1	3110.1	7.76	7.89	8.04
3590.1	3160.1	7.75	7.88	8.04
3630.1	3200.1	7.88	7.94	8.07
3680.1	3250.1	8.03	8.05	8.17
3720.1	3290.1	8.27	8.21	8.29
3770.1	3340.1	8.47	8.33	8.35
3810.1	3380.1	8.76	8.56	8.50
3860.1	3430.1	8.94	8.66	8.55
3900.1	3470.1	9.28	8.97	8.82
3950.1	3520.1	9.40	9.07	8.99
3990.1	3560.1	9.97	9.63	9.64
4040.1	3610.1	10.15	9.66	9.61
4080.1	3650.1	10.60	9.84	9.66
4130.1	3700.1	10.60	9.81	9.52
4170.1	3740.1	11.27	10.13	9.70
4220.1	3790.1	11.13	10.16	9.68
4260.1	3830.1	11.98	10.57	9.93
4310.1	3880.1	11.78	10.60	9.92
4350.1	3920.1	12.66	10.99	10.18
4400.1	3970.1	12.47	11.06	10.25

RF (IN) (MHz)	LO (MHz)	IP3 INPUT (dBm)		
		@LO (dBm)		
		+14	+17	+20
2700.1	2270.1	13.28	17.95	19.79
2740.1	2310.1	12.33	17.32	19.92
2780.1	2350.1	11.54	15.96	19.28
2820.1	2390.1	12.40	16.54	20.67
2860.1	2430.1	11.92	15.91	20.65
2900.1	2470.1	13.08	17.51	22.97
2940.1	2510.1	13.52	18.20	19.14
2980.1	2550.1	14.57	19.17	25.85
3020.1	2590.1	16.19	20.63	25.67
3060.1	2630.1	16.09	20.56	24.92
3100.1	2670.1	17.91	22.86	25.66
3140.1	2710.1	18.77	23.44	26.67
3180.1	2750.1	21.15	25.34	29.39
3230.1	2800.1	22.81	28.05	32.42
3270.1	2840.1	25.05	30.22	34.65
3320.1	2890.1	25.72	30.88	37.01
3360.1	2930.1	26.31	32.43	37.52
3410.1	2980.1	27.40	34.24	41.76
3450.1	3020.1	28.15	36.43	38.15
3500.1	3070.1	28.31	34.93	39.99
3540.1	3110.1	27.64	33.36	38.50
3590.1	3160.1	25.97	30.27	36.59
3630.1	3200.1	26.05	30.30	40.83
3680.1	3250.1	24.91	28.12	34.92
3720.1	3290.1	24.93	27.97	34.48
3770.1	3340.1	23.73	26.20	29.70
3810.1	3380.1	24.07	26.22	28.94
3860.1	3430.1	24.16	26.11	28.06
3900.1	3470.1	25.35	27.13	29.22
3950.1	3520.1	29.42	29.39	30.28
3990.1	3560.1	28.03	27.73	30.44
4040.1	3610.1	24.09	26.01	30.99
4080.1	3650.1	23.05	25.64	31.11
4130.1	3700.1	22.71	25.33	32.19
4170.1	3740.1	22.34	24.99	30.87
4220.1	3790.1	21.96	24.67	30.99
4260.1	3830.1	21.08	24.08	29.16
4310.1	3880.1	21.43	24.59	31.45
4350.1	3920.1	20.85	24.38	31.48
4400.1	3970.1	20.51	23.87	29.61

RF (IN) (MHz)	LO (MHz)	COMPRESSION @RF IN=+17dBm (dB)		
		@LO (dBm)		
		+14	+17	+20
2700.1	2270.1	-0.47	0.91	0.78
2740.1	2310.1	-0.19	0.78	1.17
2780.1	2350.1	-0.64	0.40	0.93
2820.1	2390.1	-0.42	0.47	1.02
2860.1	2430.1	-0.57	0.33	1.00
2900.1	2470.1	-0.44	0.45	0.88
2940.1	2510.1	-0.24	0.52	0.19
2980.1	2550.1	-0.25	0.44	0.74
3020.1	2590.1	0.02	0.54	0.68
3060.1	2630.1	-0.15	0.45	0.62
3100.1	2670.1	0.15	0.58	0.60
3140.1	2710.1	0.15	0.50	0.54
3180.1	2750.1	0.27	0.45	0.45
3230.1	2800.1	0.48	0.43	0.30
3270.1	2840.1	0.51	0.35	0.21
3320.1	2890.1	0.48	0.26	0.13
3360.1	2930.1	0.34	0.19	0.11
3410.1	2980.1	0.24	0.12	0.09
3450.1	3020.1	0.18	0.07	0.07
3500.1	3070.1	0.21	0.04	0.02
3540.1	3110.1	0.27	0.04	0.01
3590.1	3160.1	0.47	0.12	0.03
3630.1	3200.1	0.43	0.13	0.04
3680.1	3250.1	0.57	0.19	0.03
3720.1	3290.1	0.51	0.18	0.03
3770.1	3340.1	0.62	0.29	0.08
3810.1	3380.1	0.45	0.20	0.05
3860.1	3430.1	0.45	0.24	0.06
3900.1	3470.1	0.29	0.14	0.01
3950.1	3520.1	0.33	0.20	0.04
3990.1	3560.1	0.22	0.19	0.05
4040.1	3610.1	0.22	0.28	0.09
4080.1	3650.1	0.06	0.27	0.13
4130.1	3700.1	0.04	0.29	0.15
4170.1	3740.1	-0.23	0.21	0.16
4220.1	3790.1	-0.14	0.22	0.17
4260.1	3830.1	-0.46	0.16	0.23
4310.1	3880.1	-0.38	0.11	0.18
4350.1	3920.1	-0.75	-0.03	0.15
4400.1	3970.1	-0.58	0.04	0.20

Typical Performance Data

IF (OUT) (MHz)	LO (MHz)	CONVERSION LOSS VS. IF FREQUENCY @RF(IN)=3550MHz (dB)
		@LO (dBm)
		+17
1049.9	2500.1	13.12
994.6	2555.4	12.03
939.3	2610.7	11.16
884.0	2666.0	9.98
828.6	2721.4	9.42
773.3	2776.7	8.66
718.0	2832.0	8.41
662.7	2887.3	8.21
607.4	2942.6	8.14
552.1	2997.9	8.06
496.8	3053.2	7.96
441.4	3108.6	7.88
386.1	3163.9	7.67
330.8	3219.2	7.66
275.5	3274.5	7.57
220.2	3329.8	7.63
164.9	3385.1	8.04
109.6	3440.4	9.40
54.3	3495.7	13.08
10.0	3560.0	27.08
154.2	3704.2	8.71
298.4	3848.4	8.14
442.6	3992.6	8.51
586.9	4136.9	8.95
731.1	4281.1	9.35
875.3	4425.3	9.64
1019.5	4569.5	9.93
1163.7	4713.7	10.40
1307.9	4857.9	10.06
1452.2	5002.2	9.67
1567.5	5117.5	9.29
1711.7	5261.7	8.89
1827.1	5377.1	8.87
1971.3	5521.3	8.85
2086.7	5636.7	8.67
2230.9	5780.9	10.77
2346.3	5896.3	10.86
2490.5	6040.5	9.94
2605.9	6155.9	9.73
2750.1	6300.1	10.77

IF (OUT) (MHz)	LO (MHz)	CONVERSION LOSS VS. IF FREQUENCY @RF(IN)=3490MHz (dB)
		@LO (dBm)
		+17
10.1	3500.1	26.69
70.1	3560.1	11.64
130.1	3620.1	9.03
190.1	3680.1	8.10
250.1	3740.1	7.96
310.1	3800.1	7.96
370.1	3860.1	8.03
430.1	3920.1	8.30
490.1	3980.1	8.41
550.1	4040.1	8.62
610.1	4100.1	8.84
670.1	4160.1	8.97
730.1	4220.1	9.13
790.1	4280.1	9.24
850.1	4340.1	9.38
910.1	4400.1	9.64
970.1	4460.1	9.51
1030.1	4520.1	9.72
1090.1	4580.1	9.77
1150.1	4640.1	10.15
1210.1	4700.1	10.20
1270.1	4760.1	10.01
1330.1	4820.1	10.04
1390.1	4880.1	9.81
1470.1	4960.1	9.50
1530.1	5020.1	9.26
1610.1	5100.1	9.06
1670.1	5160.1	8.99
1750.1	5240.1	8.83
1810.1	5300.1	8.75
1890.1	5380.1	8.70
1950.1	5440.1	8.74
2030.1	5520.1	8.73
2090.1	5580.1	8.61
2170.1	5660.1	8.99
2230.1	5720.1	9.81
2310.1	5800.1	10.87
2370.1	5860.1	10.84
2450.1	5940.1	10.51
2510.1	6000.1	10.11

IF (OUT) (MHz)	LO (MHz)	CONVERSION LOSS VS. IF FREQUENCY @RF(IN)=3610.1MHz (dB)
		@LO (dBm)
		+17
1010.0	2600.1	11.55
990.0	2620.1	11.31
970.0	2640.1	10.89
950.0	2660.1	10.48
930.0	2680.1	10.15
910.0	2700.1	9.97
890.0	2720.1	9.67
870.0	2740.1	9.42
850.0	2760.1	9.23
830.0	2780.1	9.06
810.0	2800.1	8.95
790.0	2820.1	8.83
770.0	2840.1	8.72
750.0	2860.1	8.63
730.0	2880.1	8.65
710.0	2900.1	8.58
690.0	2920.1	8.54
670.0	2940.1	8.47
650.0	2960.1	8.44
630.0	2980.1	8.44
610.0	3000.1	8.35
590.0	3020.1	8.34
570.0	3040.1	8.24
550.0	3060.1	8.25
530.0	3080.1	8.20
510.0	3100.1	8.17
470.0	3140.1	8.05
450.0	3160.1	8.02
410.0	3200.1	7.90
390.0	3220.1	7.88
350.0	3260.1	7.83
330.0	3280.1	7.76
290.0	3320.1	7.71
270.0	3340.1	7.77
230.0	3380.1	7.85
210.0	3400.1	7.91
170.0	3440.1	8.29
150.0	3460.1	8.59
110.0	3500.1	9.60
90.0	3520.1	10.60

Typical Performance Data

LO (MHz)	LO-RF ISOLATION (dB)			LO-IF ISOLATION (dB)			RF (IN) (MHz)	LO (MHz)	RF-IF ISOLATION (dB)		
	@LO (dBm)			@LO (dBm)					@LO (dBm)		
	+14	+17	+20	+14	+17	+20			+14	+17	+20
2270.1	27.37	28.36	29.12	32.68	33.68	34.24	2700.1	2270.1	22.39	19.06	16.17
2310.1	29.06	29.93	31.13	34.04	35.37	36.42	2740.1	2310.1	23.28	19.83	17.17
2350.1	30.61	31.37	32.92	35.63	37.20	38.49	2780.1	2350.1	24.05	20.78	18.39
2390.1	32.02	32.91	35.14	37.84	39.75	40.59	2820.1	2390.1	24.11	21.28	19.39
2430.1	32.79	33.85	36.16	39.29	40.98	40.48	2860.1	2430.1	25.42	22.79	20.85
2470.1	33.76	35.43	37.54	41.76	41.13	37.98	2900.1	2470.1	25.99	23.42	21.96
2510.1	34.34	35.96	36.17	42.26	39.37	35.90	2940.1	2510.1	27.76	24.86	23.94
2550.1	35.00	36.57	36.99	40.23	36.73	33.56	2980.1	2550.1	28.45	25.97	25.60
2590.1	35.40	36.32	36.00	37.08	33.86	31.48	3020.1	2590.1	29.38	27.94	27.96
2630.1	35.16	35.61	34.86	35.09	32.12	30.04	3060.1	2630.1	31.24	29.75	28.83
2670.1	34.86	34.86	34.16	32.14	29.97	28.34	3100.1	2670.1	32.12	29.54	27.51
2710.1	33.95	33.42	32.94	30.85	28.74	27.59	3140.1	2710.1	31.22	27.48	25.45
2750.1	33.59	33.42	33.18	28.99	27.42	26.48	3180.1	2750.1	28.71	25.30	23.99
2800.1	32.24	31.95	31.83	27.83	26.49	25.91	3230.1	2800.1	26.56	24.24	23.48
2840.1	31.65	31.60	31.61	26.97	26.07	25.79	3270.1	2840.1	24.77	23.50	23.09
2890.1	29.73	30.50	30.97	26.14	26.33	26.64	3320.1	2890.1	23.19	22.59	22.49
2930.1	31.02	32.41	32.90	26.11	26.41	26.71	3360.1	2930.1	21.75	21.52	21.58
2980.1	32.87	34.62	35.20	25.60	25.95	26.34	3410.1	2980.1	21.52	21.44	21.35
3020.1	35.96	37.14	37.40	25.82	26.01	26.85	3450.1	3020.1	21.61	21.63	21.54
3070.1	41.18	41.32	39.30	25.26	25.28	25.90	3500.1	3070.1	21.05	21.13	21.03
3110.1	53.22	49.16	43.71	26.12	26.20	26.65	3540.1	3110.1	20.48	20.52	20.44
3160.1	56.65	50.46	45.78	28.33	28.43	28.60	3590.1	3160.1	19.83	19.81	19.75
3200.1	53.71	48.35	44.52	29.99	30.40	30.61	3630.1	3200.1	19.71	19.68	19.55
3250.1	46.53	44.22	42.60	32.13	32.57	32.95	3680.1	3250.1	19.85	19.87	19.78
3290.1	43.77	42.56	41.26	33.53	34.01	34.04	3720.1	3290.1	20.05	20.13	20.02
3340.1	41.80	41.31	40.74	34.87	35.10	35.05	3770.1	3340.1	20.11	20.20	20.17
3380.1	40.12	40.06	39.45	36.55	36.24	35.46	3810.1	3380.1	20.18	20.26	20.26
3430.1	37.56	37.86	37.62	39.95	38.98	37.74	3860.1	3430.1	20.75	20.87	20.97
3470.1	35.49	35.62	35.37	42.13	41.17	39.91	3900.1	3470.1	21.19	21.50	21.72
3520.1	32.69	32.48	32.32	37.09	36.04	35.05	3950.1	3520.1	21.79	22.16	22.51
3560.1	32.65	32.92	33.06	32.56	31.59	30.85	3990.1	3560.1	22.61	22.94	23.37
3610.1	35.36	35.58	35.54	31.63	30.99	30.44	4040.1	3610.1	23.28	23.57	23.84
3650.1	36.79	36.96	36.91	31.72	30.94	30.46	4080.1	3650.1	24.15	24.32	24.40
3700.1	37.48	38.25	38.17	30.90	30.43	29.79	4130.1	3700.1	25.69	25.32	25.02
3740.1	37.43	38.78	39.30	30.80	30.42	30.07	4170.1	3740.1	26.85	25.91	25.31
3790.1	37.68	39.34	39.98	30.14	30.08	29.70	4220.1	3790.1	27.60	26.18	25.30
3830.1	37.33	38.99	40.17	29.79	29.88	30.12	4260.1	3830.1	28.20	26.18	25.24
3880.1	37.59	39.07	39.66	29.46	30.18	30.37	4310.1	3880.1	27.06	25.50	24.67
3920.1	37.49	38.74	39.58	29.00	30.01	30.85	4350.1	3920.1	26.74	25.10	24.30
3970.1	37.97	38.96	39.52	28.96	30.46	31.72	4400.1	3970.1	25.21	24.11	23.53

Typical Performance Data

RF (IN) (MHz)	LO (MHz)	RF VSWR (:1)			LO (MHz)	LO VSWR (:1)			IF (OUT) (MHz)	IF VSWR @LO=3600MHz (:1)		
		@LO (dBm)				@LO (dBm)				@LO (dBm)		
		+14	+17	+20		+14	+17	+20		+14	+17	+20
2700.1	2270.1	5.39	4.36	3.48	2270.1	27.59	26.74	24.83	100.1	4.51	3.82	3.50
2740.1	2310.1	5.44	4.28	3.40	2310.1	28.96	27.16	23.81	180.1	1.93	1.79	1.82
2780.1	2350.1	5.19	4.01	3.16	2350.1	29.96	27.59	23.49	260.1	1.22	1.22	1.46
2820.1	2390.1	4.66	3.61	2.81	2390.1	32.18	30.49	27.59	340.1	1.18	1.26	1.51
2860.1	2430.1	4.57	3.54	2.69	2430.1	29.46	26.33	21.46	420.1	1.46	1.50	1.68
2900.1	2470.1	3.95	3.00	2.27	2470.1	30.49	28.49	25.56	500.1	1.73	1.71	1.83
2940.1	2510.1	3.71	2.82	2.16	2510.1	27.59	24.83	19.54	580.1	1.98	1.87	1.92
2980.1	2550.1	3.29	2.55	1.93	2550.1	25.51	23.81	19.76	660.1	2.21	2.01	2.00
3020.1	2590.1	2.93	2.29	1.75	2590.1	25.19	23.49	20.70	740.1	2.27	2.06	2.00
3060.1	2630.1	2.79	2.17	1.69	2630.1	21.73	19.54	16.11	820.1	2.40	2.11	2.01
3100.1	2670.1	2.49	1.94	1.62	2670.1	20.22	18.70	16.72	900.1	2.49	2.14	1.99
3140.1	2710.1	2.34	1.88	1.61	2710.1	17.05	15.39	13.19	980.1	2.54	2.16	1.96
3180.1	2750.1	2.15	1.79	1.63	2750.1	14.50	13.19	11.69	1060.1	2.60	2.16	1.92
3230.1	2800.1	1.92	1.70	1.63	2800.1	10.82	9.74	8.51	1140.1	2.47	2.04	1.78
3270.1	2840.1	1.76	1.67	1.69	2840.1	8.31	7.44	6.66	1220.1	2.50	2.02	1.72
3320.1	2890.1	1.66	1.65	1.71	2890.1	5.70	5.10	4.61	1300.1	2.38	1.90	1.60
3360.1	2930.1	1.71	1.75	1.83	2930.1	4.14	3.76	3.45	1380.1	2.25	1.80	1.51
3410.1	2980.1	1.81	1.88	1.97	2980.1	2.85	2.63	2.45	1460.1	2.18	1.72	1.43
3450.1	3020.1	1.86	1.97	2.09	3020.1	2.32	2.23	2.18	1540.1	2.10	1.65	1.35
3500.1	3070.1	1.92	2.02	2.14	3070.1	2.30	2.35	2.43	1600.1	1.99	1.56	1.27
3540.1	3110.1	1.92	2.03	2.15	3110.1	2.72	2.86	3.04	1680.1	1.83	1.43	1.17
3590.1	3160.1	2.03	2.11	2.20	3160.1	3.51	3.70	3.88	1740.1	1.67	1.31	1.09
3630.1	3200.1	2.06	2.12	2.22	3200.1	4.38	4.62	4.88	1820.1	1.53	1.21	1.09
3680.1	3250.1	2.24	2.26	2.32	3250.1	5.34	5.52	5.59	1880.1	1.47	1.18	1.14
3720.1	3290.1	2.30	2.31	2.37	3290.1	6.39	6.66	6.86	1960.1	1.39	1.16	1.22
3770.1	3340.1	2.57	2.55	2.58	3340.1	7.20	7.22	6.97	2020.1	1.40	1.21	1.27
3810.1	3380.1	2.65	2.61	2.64	3380.1	8.16	8.39	8.47	2100.1	1.48	1.33	1.38
3860.1	3430.1	2.93	2.86	2.86	3430.1	8.55	8.35	7.73	2160.1	1.58	1.41	1.41
3900.1	3470.1	3.02	2.93	2.91	3470.1	9.08	9.08	8.95	2240.1	1.81	1.63	1.59
3950.1	3520.1	3.25	3.11	3.05	3520.1	8.60	8.16	7.44	2300.1	1.99	1.84	1.80
3990.1	3560.1	3.29	3.09	3.04	3560.1	9.28	9.04	8.60	2380.1	2.28	2.12	2.06
4040.1	3610.1	3.42	3.19	3.14	3610.1	10.96	10.62	9.85	2440.1	2.52	2.35	2.29
4080.1	3650.1	3.69	3.36	3.25	3650.1	11.69	11.09	10.02	2520.1	2.78	2.60	2.52
4130.1	3700.1	3.83	3.48	3.32	3700.1	13.19	12.80	11.93	2580.1	3.12	2.92	2.80
4170.1	3740.1	4.18	3.70	3.48	3740.1	12.80	11.85	10.25	2660.1	3.37	3.11	2.97
4220.1	3790.1	4.32	3.86	3.60	3790.1	14.50	14.03	13.29	2720.1	3.54	3.20	2.99
4260.1	3830.1	4.68	4.06	3.74	3830.1	13.49	12.26	10.56	2800.1	3.84	3.47	3.25
4310.1	3880.1	4.74	4.20	3.84	3880.1	15.13	14.62	13.81	2860.1	3.90	3.49	3.24
4350.1	3920.1	5.10	4.38	3.97	3920.1	14.03	12.89	11.09	2940.1	4.22	3.76	3.45
4400.1	3970.1	5.12	4.47	4.04	3970.1	15.13	14.74	13.92	3000.1	4.08	3.62	3.33

Harmonics Tables

RF HARMONICS ORDER

	(-dBm)	(-dBc)										
0	-	-	4	12	17	13	34	34	34	---	---	---
1	-	12	+0	31	24	25	36	58	55	53	---	---
2	61	43	64	65	53	56	66	59	76	59	77	---
3	86	75	69	74	59	69	66	74	71	>84	>84	>84
4	>90	>84	>84	>84	>84	>84	>84	>84	>84	>84	>84	>84
5	>90	>84	>84	>84	>84	>84	>84	>84	>84	>84	>84	>84
6	>90	>84	>84	>84	>84	>84	>84	>84	>84	>84	>84	>84
7	---	---	>84	>84	>84	>84	>84	>84	>84	>84	>84	>84
8	---	---	---	>84	>84	>84	>84	>84	>84	>84	>84	>84
9	---	---	---	---	>84	>84	>84	>84	>84	>84	>84	>84
10	---	---	---	---	---	>84	>84	>84	>84	>84	>84	>84
	RF CAL	0	1	2	3	4	5	6	7	8	9	10

Test conditions: RF IN: 3550 MHz; 2.00 dBm.
 LO IN: 3120 MHz; +17.00 dBm
 IF OUT: 430 MHz; -5.91 dBm

RF HARMONICS ORDER

	(-dBm)	(-dBc)										
0	-	-	14	22	26	24	43	46	45	---	---	---
1	-	12	+0	31	25	26	37	62	56	55	---	---
2	41	33	61	61	42	46	55	49	68	51	68	---
3	62	53	49	56	40	51	46	55	53	76	80	73
4	77	79	78	78	65	68	65	61	70	71	81	71
5	76	>94	93	80	73	74	67	71	72	72	76	79
6	78	92	92	89	84	87	90	83	>94	79	82	79
7	---	---	>94	>94	>94	93	87	86	78	82	82	>94
8	---	---	---	>94	>94	>94	>94	89	>94	92	90	89
9	---	---	---	---	>94	>94	>94	>94	>94	91	88	93
10	---	---	---	---	---	>94	>94	>94	>94	>94	>94	>94
	RF CAL	0	1	2	3	4	5	6	7	8	9	10

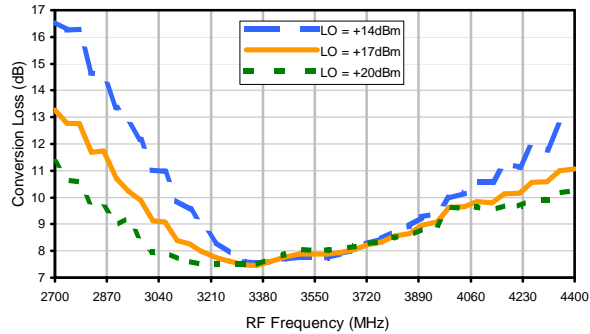
LO HARMONICS ORDER

Test conditions: RF IN: 3550 MHz; 12.00 dBm.
 LO IN: 3120 MHz; +17.00 dBm
 IF OUT: 430 MHz; 3.88 dBm

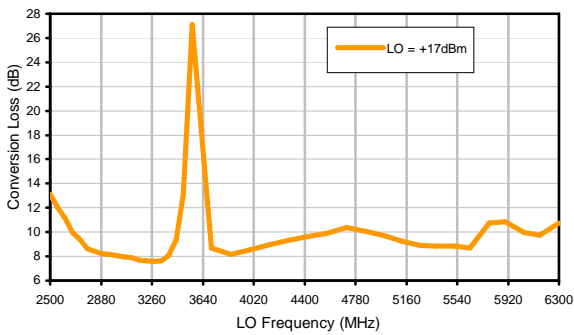
- Notes: 1. All Harmonics are in (dBc) relative to IF OUTPUT.
 2. + entry denotes harmonics are in (dBc) above IF OUTPUT.
 3. RF Cal represent the Harmonics level of the RF input signal to the mixer.

Typical Performance Curves

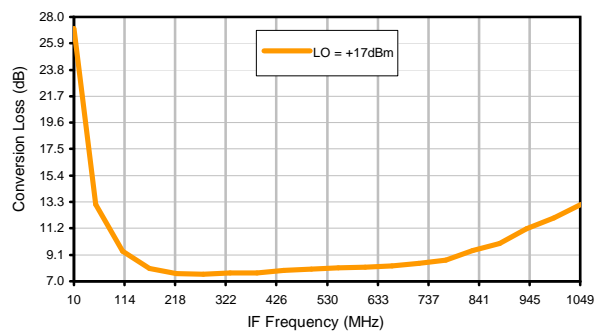
Conversion Loss @ IF=430MHz



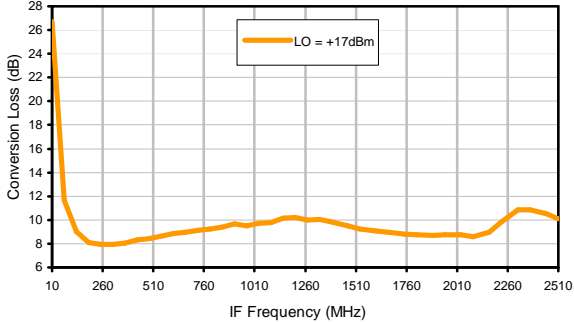
Conversion Loss vs. LO @ RF=3550MHz



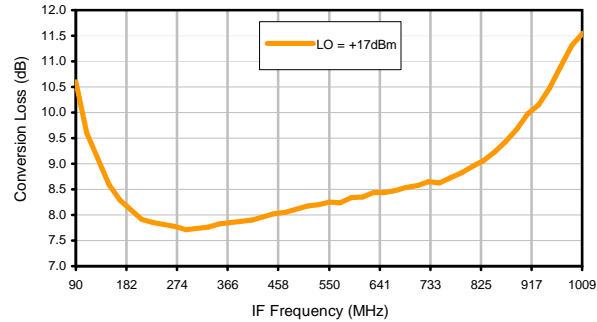
Conversion Loss vs. IF @ RF=3550MHz



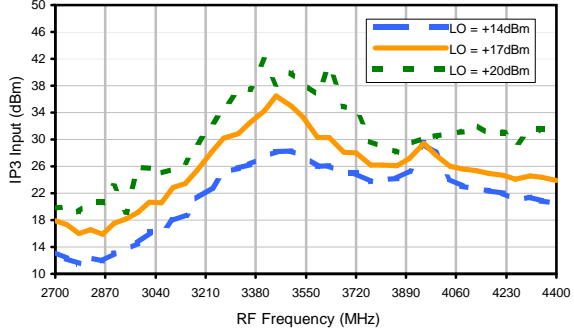
Conversion Loss vs. IF @ RF=3490MHz



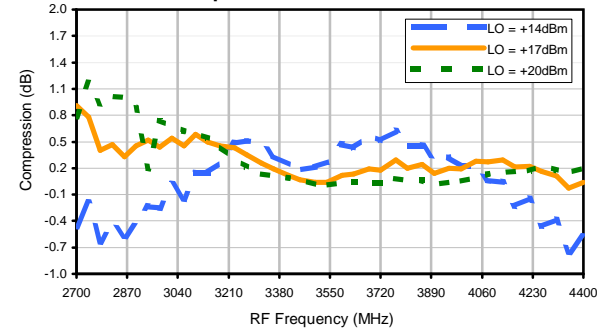
Conversion Loss vs. IF @ RF=3610.1MHz



IP3 Input

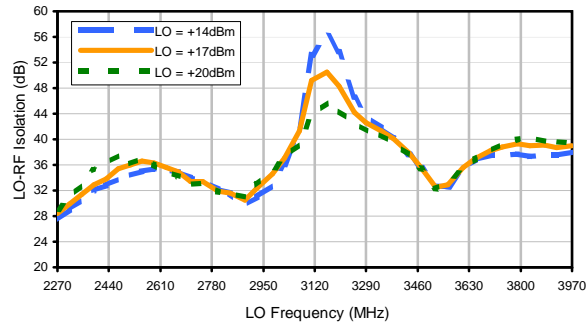


Compression @ RF IN=+17dBm

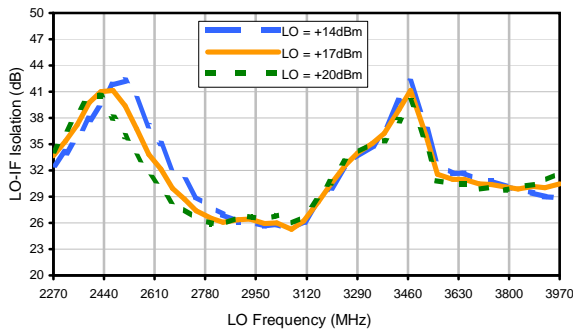


Typical Performance Curves

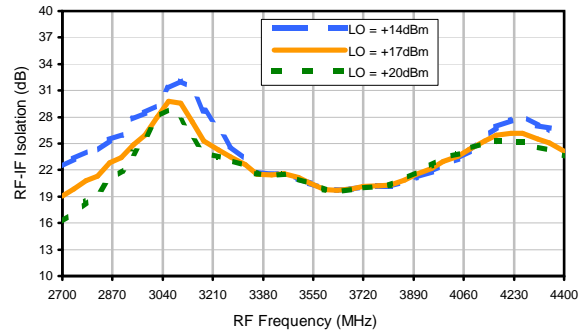
LO-RF Isolation



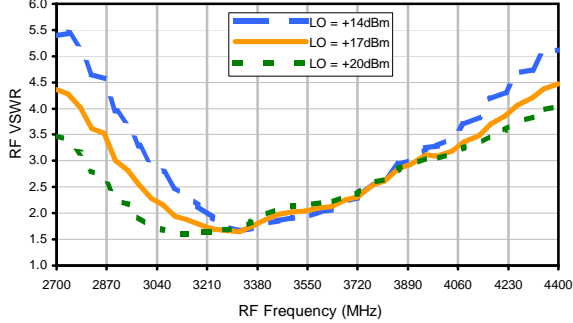
LO-IF Isolation



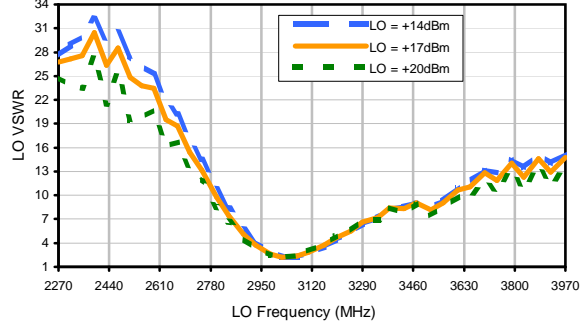
RF-IF Isolation



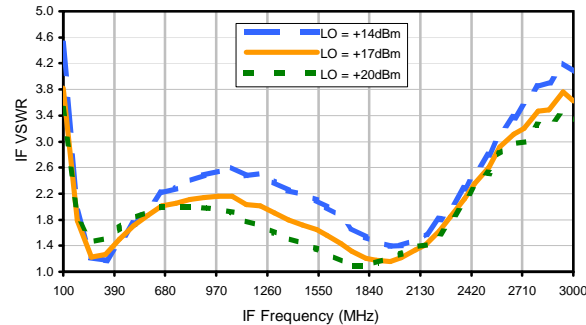
RF VSWR



LO VSWR



IF VSWR



Harmonics Tables

RF HARMONICS ORDER

	(-dBm)	(-dBc)										
0	-	-	4	12	17	13	34	34	34	---	---	---
1	-	12	+0	31	24	25	36	58	55	53	---	---
2	61	43	64	65	53	56	66	59	76	59	77	---
3	86	75	69	74	59	69	66	74	71	>84	>84	>84
4	>90	>84	>84	>84	>84	>84	>84	>84	>84	>84	>84	>84
5	>90	>84	>84	>84	>84	>84	>84	>84	>84	>84	>84	>84
6	>90	>84	>84	>84	>84	>84	>84	>84	>84	>84	>84	>84
7	---	---	>84	>84	>84	>84	>84	>84	>84	>84	>84	>84
8	---	---	---	>84	>84	>84	>84	>84	>84	>84	>84	>84
9	---	---	---	---	>84	>84	>84	>84	>84	>84	>84	>84
10	---	---	---	---	---	>84	>84	>84	>84	>84	>84	>84
	RF CAL	0	1	2	3	4	5	6	7	8	9	10

Test conditions: RF IN: 3550 MHz; 2.00 dBm.
 LO IN: 3120 MHz; +17.00 dBm
 IF OUT: 430 MHz; -5.91 dBm

RF HARMONICS ORDER

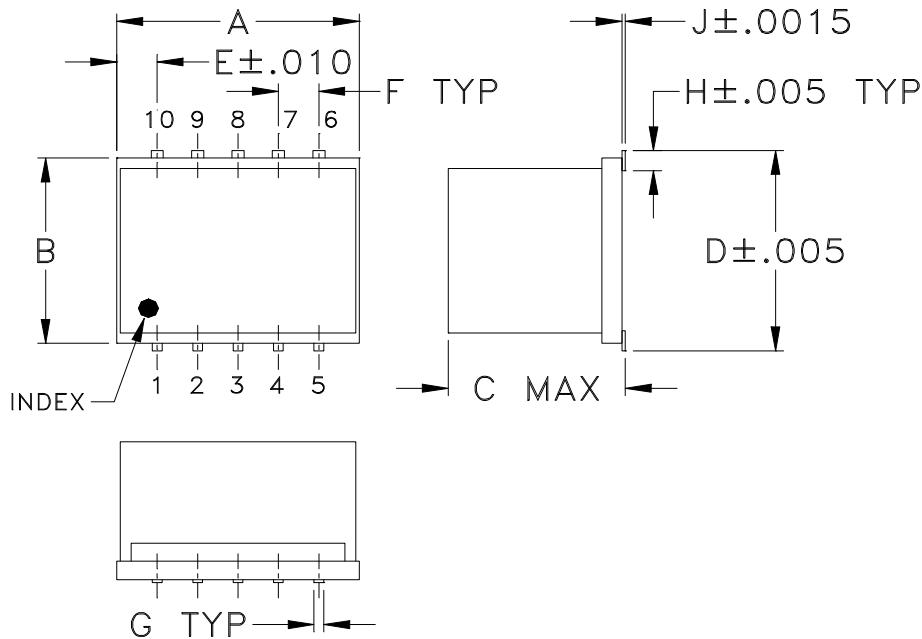
	(-dBm)	(-dBc)										
0	-	-	14	22	26	24	43	46	45	---	---	---
1	-	12	+0	31	25	26	37	62	56	55	---	---
2	41	33	61	61	42	46	55	49	68	51	68	---
3	62	53	49	56	40	51	46	55	53	76	80	73
4	77	79	78	78	65	68	65	61	70	71	81	71
5	76	>94	93	80	73	74	67	71	72	72	76	79
6	78	92	92	89	84	87	90	83	>94	79	82	79
7	---	---	>94	>94	>94	93	87	86	78	82	82	>94
8	---	---	---	>94	>94	>94	>94	89	>94	92	90	89
9	---	---	---	---	>94	>94	>94	>94	>94	91	88	93
10	---	---	---	---	---	>94	>94	>94	>94	>94	>94	>94
	RF CAL	0	1	2	3	4	5	6	7	8	9	10

LO HARMONICS ORDER

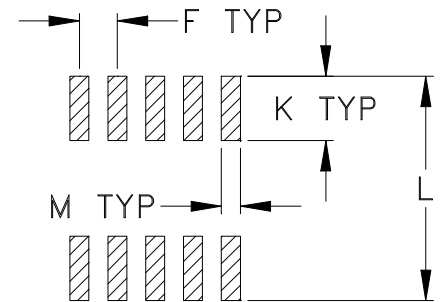
Test conditions: RF IN: 3550 MHz; 12.00 dBm.
 LO IN: 3120 MHz; +17.00 dBm
 IF OUT: 430 MHz; 3.88 dBm

- Notes: 1. All Harmonics are in (dBc) relative to IF OUTPUT.
 2. + entry denotes harmonics are in (dBc) above IF OUTPUT.
 3. RF Cal represent the Harmonics level of the RF input signal to the mixer.

Outline Dimensions



PCB Land Pattern



Suggested Layout,
Tolerance to be within $\pm.002$

CASE#	A	B	C	D	E	F	G	H	J	K	L	M	WT. GRAMS
DZ883	.30 (7.62)	.250 (6.35)	.190 (4.83)	.266 (6.76)	.050 (1.27)	.050 (1.27)	.012 (0.30)	.029 (0.74)	.004 (0.10)	.085 (2.16)	.296 (7.52)	.030 (0.76)	0.5

Dimensions are in inches (mm). Tolerances: 2Pl. $\pm.01$; 3Pl. $\pm.005$

Notes:

- Case material: Ceramic.
- Termination finish:
 - For RoHS Case Styles: Tin plate. All models, (+) suffix.
 - For RoHS-5 Case Styles: Tin-Lead plate. All models, no (+) suffix.



INTERNET <http://www.minicircuits.com>

P.O. Box 350166, Brooklyn, New York 11235-0003 (718) 934-4500 Fax (718) 332-4661
 Distribution Centers NORTH AMERICA 800-654-7949 • 417-335-5935 • Fax 417-335-5945 • EUROPE 44-1252-832600 • Fax 44-1252-837010
 Mini-Circuits ISO 9001 & ISO 14001 Certified

Tape & Reel Packaging TR-F34



Tape Width, mm	Device Cavity Pitch, mm	Reel Size, inches	Devices per Reel see note	
16	12	7	Small quantity standard (see note)	20
				50
			Standard	100
				200
		13	Standard	500
				1000

Note: Availability of small reel quantity varies by model.
Refer to pricing and availability on individual model dashboard.

Mini-Circuits carrier tape materials provide protection from ESD (Electro-Static Discharge) during handling and transportation. Tapes are static dissipative and comply with industry standards EIA-481/EIA-541.

Go to: www.minicircuits.com/pages/pdfs/tape.pdf



INTERNET <http://www.minicircuits.com>

P.O. Box 350166, Brooklyn, New York 11235-0003 (718) 934-4500 Fax (718) 332-4661

Distribution Centers NORTH AMERICA 800-654-7949 • 417-335-5935 • Fax 417-335-5945 • EUROPE 44-1252-832600 • Fax 44-1252-837010

Mini-Circuits ISO 9001 & ISO 14001 Certified

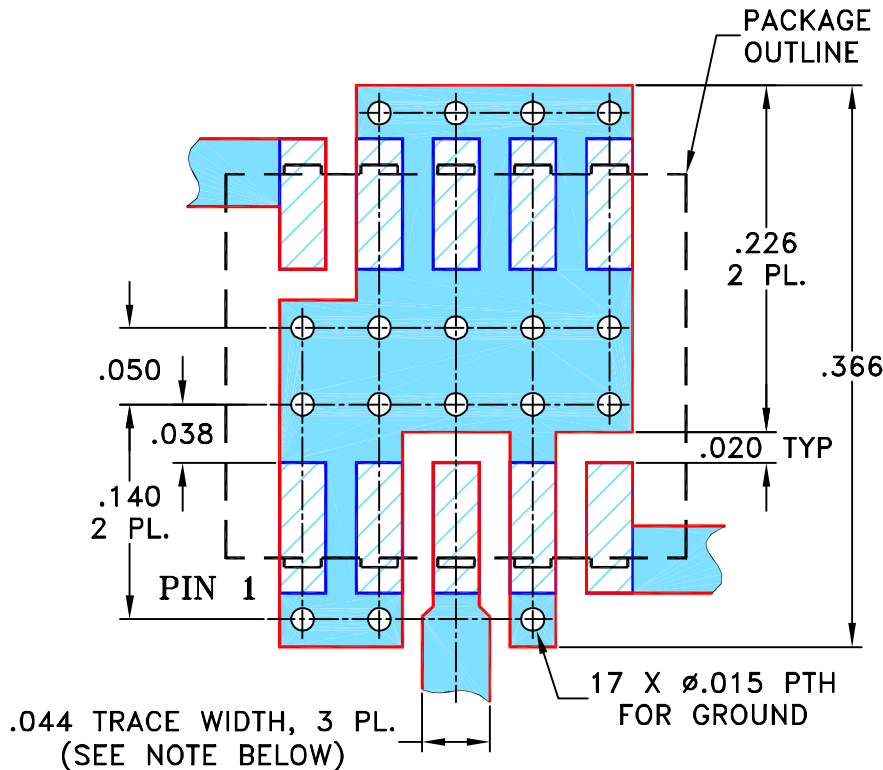
THIRD ANGLE PROJECTION



REVISIONS

REV	ECN No.	DESCRIPTION	DATE	DR	AUTH
A	M81781	UPDATED PCB LAYOUT	06/07/02	GF	DJ
B	M82377	UPDATED DRAWING	07/31/02	AV	WL
C	M102713	ADDED NOTE 2 & "...WITH SMOBC"	01/17/06	MMG	IL
D	M135488	ADDED DZ1650, CHANGED PIN CONN.	02/02/12	GF	DJ

SUGGESTED MOUNTING CONFIGURATION FOR
DZ883, DZ885 & DZ1650 CASE STYLES, "10MX01" PIN CONNECTION



- NOTES: 1. TRACE WIDTH IS SHOWN FOR ROGERS R04350B WITH DIELECTRIC THICKNESS .020" ± .0015"; COPPER: 1/2 OZ. EACH SIDE. FOR OTHER MATERIALS TRACE WIDTH MAY NEED TO BE MODIFIED.
2. BOTTOM SIDE OF THE PCB IS CONTINUOUS GROUND PLANE.



DENOTES PCB COPPER LAYOUT WITH SMOBC (SOLDER MASK OVER BARE COPPER)

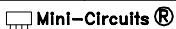


DENOTES COPPER LAND PATTERN FREE OF SOLDER MASK

UNLESS OTHERWISE SPECIFIED	INITIALS		DATE
DIMENSIONS ARE IN INCHES	DRAWN	AV	05/08/02
TOLERANCES ON:	CHECKED	DB	05/16/02
2 PL DECIMALS ±	APPROVED	WL	05/16/02
3 PL DECIMALS ± .005			
ANGLES ±			
FRACTIONS ±			

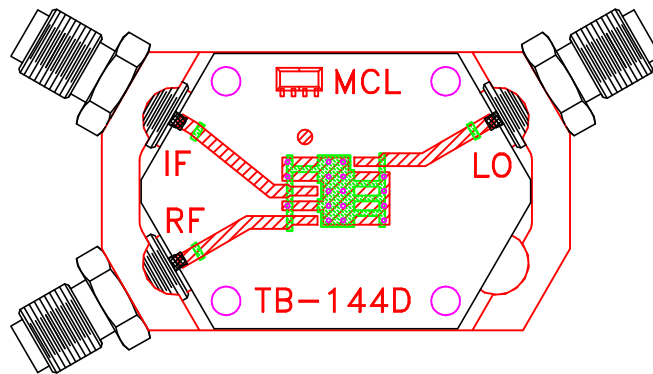
 **Mini-Circuits**® 13 Neptune Avenue
Brooklyn NY 11235

PL, 10MX01, DZ883/885/1650, TB-144

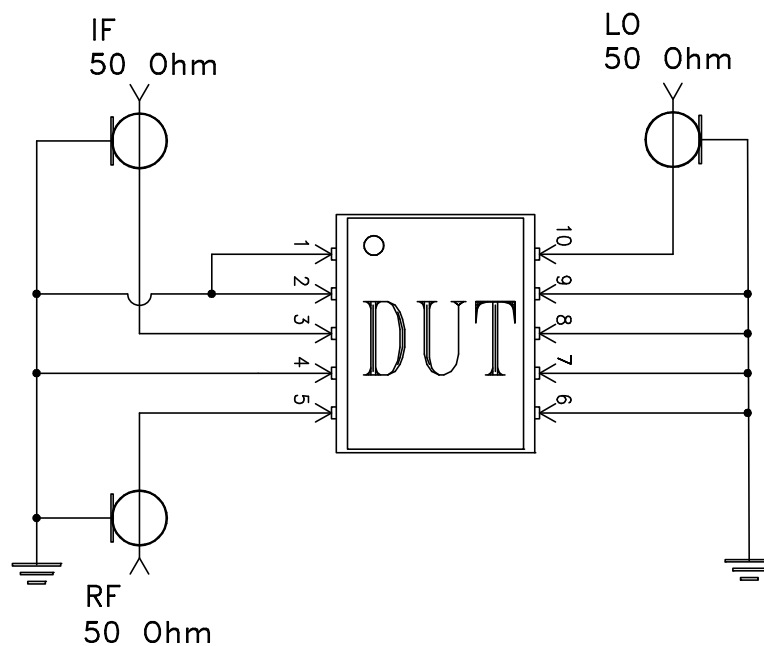
 Mini-Circuits®
THIS DOCUMENT AND ITS CONTENTS ARE THE PROPERTY OF MINI-CIRCUITS. EXCEPT FOR USE EXPRESSLY GRANTED, IN WRITING, TO ITS VENDORS, VENDEE AND THE UNITED STATES GOVERNMENT, MINI-CIRCUITS RESERVES ALL PROPRIETARY DESIGN, USE, MANUFACTURING AND REPRODUCTION RIGHTS THERETO. THESE CONTENTS SHALL NOT BE USED, DUPLICATED OR DISCLOSED TO ANY OUTSIDE PARTY, IN WHOLE OR IN PART, WITHOUT WRITTEN PERMISSION OF MINI-CIRCUITS.

SIZE	CODE IDENT	DRAWING NO:	REV:
A	15542	98-PL-045	D
FILE:	98PL045	SCALE:	8:1
		SHEET:	1 OF 1

Evaluation Board and Circuit



TB-144



Schematic Diagram

Notes:

1. SMA Female connectors.
2. PCB Material: Rogers R04350 or equivalent,
Dielectric Constant=3.5, Thickness=.020 inch.

 **Mini-Circuits®**



All Mini-Circuits products are manufactured under exacting quality assurance and control standards, and are capable of meeting published specifications after being subjected to any or all of the following physical and environmental test.

Specification	Test/Inspection Condition	Reference/Spec
Operating Temperature	-55° to 100°C Ambient Environment	Individual Model Data Sheet
Storage Temperature	-55° to 100° C Ambient Environment	Individual Model Data Sheet
Autoclave	15 psig, 100% RH, 121°C, 96 hours	JESD22-A102-C, Condition C
Thermal Shock	-55° to 100°C, 100 cycles	MIL-STD-202, Method 107, Condition A-3, except +100°C
Solder Reflow Heat	Sn-Pb Eutectic Process: 225°C peak Pb-Free Process: 250°C peak	J-STD-020, Table 4-1, 4-2 and 5-2; Figure 5-1
Solderability	10X Magnification	J-STD-002, Para 4.2.5, Test S, 95% Coverage
Vibration (High Frequency)	20g peak, 10-2000 Hz, 12 times in each of three perpendicular directions (total 36)	MIL-STD-202, Method 204, Condition D
Mechanical Shock	50g, 11 ms, 1/2-sine, 18 shocks: 3 each direction, each of 3 axes	MIL-STD-202, Method 213, Condition A
Marking Resistance to Solvents	Isopropyl alcohol + mineral spirits at 25°C; terpene defluxer at 25°C; distilled water + proylene glycol monomethyl ether + monoethanolamine at 63°C to 70°C	MIL-STD-202, Method 215