

Bandpass Filter

RBP-263+

50Ω 230 to 297 MHz

Maximum Ratings

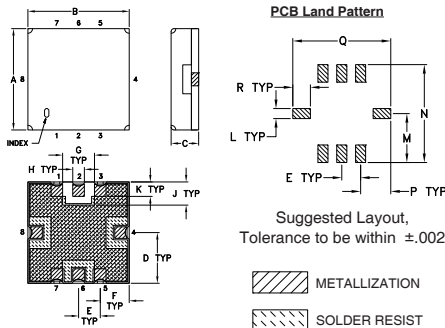
| | |
|-----------------------|----------------|
| Operating Temperature | -40°C to 85°C |
| Storage Temperature | -55°C to 100°C |
| RF Power Input | 0.5W at 25°C |

Permanent damage may occur if any of these limits are exceeded.

Pin Connections

| | |
|--------|-------------|
| RF IN | 2 |
| RF OUT | 6 |
| GROUND | 1,3,4,5,7,8 |

Outline Drawing

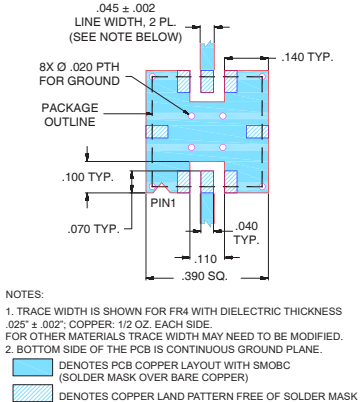


Outline Dimensions (inch/mm)

| A | B | C | D | E | F | G | H | J |
|------|------|------|------|------|------|------|-------|------|
| .350 | .350 | .100 | .175 | .075 | .100 | .110 | .040 | .080 |
| 8.89 | 8.89 | 2.54 | 4.45 | 1.91 | 2.54 | 2.79 | 1.02 | 2.03 |
| K | L | M | N | P | Q | R | wt | |
| .050 | .040 | .195 | .390 | .120 | .390 | .070 | grams | |
| 1.27 | 1.02 | 4.95 | 9.91 | 3.05 | 9.91 | 1.78 | 0.25 | |

Note: Please refer to case style drawing for details

Demo Board MCL P/N: TB-332 Suggested PCB Layout (PL-176)



Features

- linear phase, up to ±8deg typ. @ Fc ±43MHz
- good VSWR, 1.2:1 typ. @ passband
- small size 0.35" x 0.35"
- shielded case
- aqueous washable

Applications

- harmonic rejection
- transmitters / receivers
- navigation



Generic photo used for illustration purposes only
 CASE STYLE: GP731

+RoHS Compliant
 The +Suffix identifies RoHS Compliance. See our web site for RoHS Compliance methodologies and qualifications

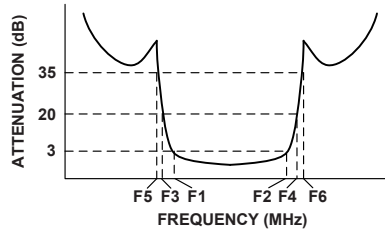
Available Tape and Reel at no extra cost

| Reel Size | Devices/Reel |
|-----------|----------------------|
| 7" | 10, 20, 50, 100, 200 |
| 13" | 500, 1000 |

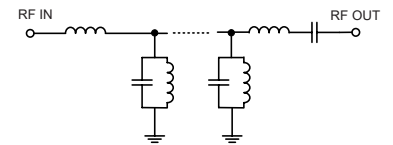
Bandpass Filter Electrical Specifications (T_{AMB} = 25°C)

| CENTER FREQ. (MHz) | PASSBAND (MHz) (Loss < 3dB) | STOPBANDS (MHz) | | | | MAXIMUM DEVIATION FROM LINEAR PHASE (deg.) | VSWR (:1) | |
|--------------------|-----------------------------|-----------------|-------------|----------|----------|--|-----------|------|
| | | Loss > 20dB | Loss > 35dB | Passband | Stopband | | | |
| Fc | F1 - F2 | F3 | F4 | F5 | F6 | Fc ± 43MHz | Max. | Typ. |
| 263.5 | 230 - 297 | 140 | 360 | 80 | 500-1000 | ±12 | 1.7 | 18 |

Typical Frequency Response

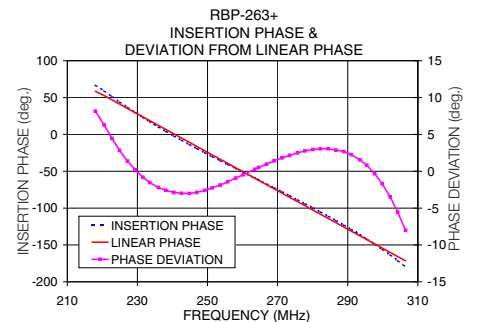
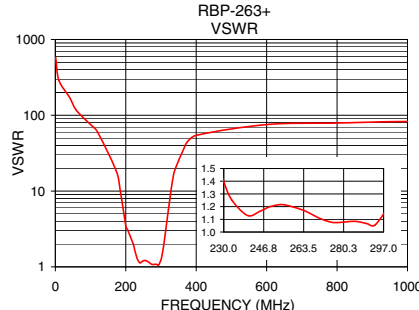
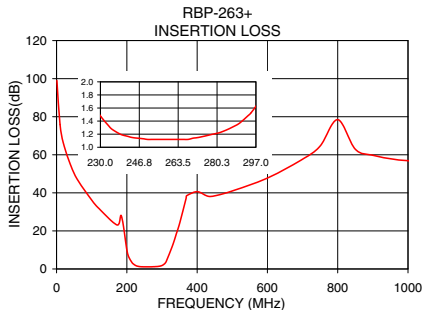


Functional Schematic



Typical Performance Data at 25°C

| Frequency (MHz) | Insertion Loss (dB) | VSWR (:1) | Frequency (MHz) | Deviation from Linear Phase (deg) |
|-----------------|---------------------|-----------|-----------------|-----------------------------------|
| 1.0 | 99.02 | 579.06 | 220.5 | 6.30 |
| 10.0 | 75.88 | 289.53 | 224.0 | 2.83 |
| 80.0 | 41.13 | 96.51 | 230.0 | 0.21 |
| 120.0 | 31.89 | 59.91 | 235.0 | -2.20 |
| 140.0 | 27.77 | 43.44 | 240.0 | -2.87 |
| 200.0 | 9.98 | 3.48 | 246.0 | -2.87 |
| 220.5 | 2.35 | 2.04 | 251.0 | -2.26 |
| 230.0 | 1.47 | 1.40 | 255.0 | -1.43 |
| 263.5 | 1.12 | 1.17 | 263.5 | 0.27 |
| 297.0 | 1.63 | 1.12 | 266.0 | 0.96 |
| 306.5 | 2.66 | 1.81 | 271.0 | 1.82 |
| 325.0 | 9.58 | 7.94 | 275.0 | 2.49 |
| 350.0 | 23.83 | 27.59 | 284.0 | 3.06 |
| 360.0 | 30.23 | 34.75 | 291.0 | 2.26 |
| 400.0 | 40.61 | 54.29 | 297.0 | -0.32 |
| 500.0 | 41.00 | 72.39 | 302.0 | -3.47 |
| 1000.0 | 56.91 | 82.73 | 306.5 | -8.02 |



Notes

- Performance and quality attributes and conditions not expressly stated in this specification document are intended to be excluded and do not form a part of this specification document.
- Electrical specifications and performance data contained in this specification document are based on Mini-Circuit's applicable established test performance criteria and measurement instructions.
- The parts covered by this specification document are subject to Mini-Circuit's standard limited warranty and terms and conditions (collectively, "Standard Terms"); Purchasers of this part are entitled to the rights and benefits contained therein. For a full statement of the Standard Terms and the exclusive rights and remedies thereunder, please visit Mini-Circuit's website at www.minicircuits.com/MCLStore/terms.jsp



Metal Shield Band Pass Filter

RBP-263+

Typical Performance Data

| FREQ. (MHz) | INSERTION LOSS (dB) | | | INPUT RETURN LOSS (dB) | | | OUTPUT RETURN LOSS (dB) | | |
|----------------|------------------------|----------|----------|---------------------------|----------|----------|----------------------------|----------|----------|
| | @ -40° C | @ +25° C | @ +85° C | @ -40° C | @ +25° C | @ +85° C | @ -40° C | @ +25° C | @ +85° C |
| 1 | 87.44 | 88.60 | 89.60 | 0.03 | 0.05 | 0.04 | 0.00 | 0.00 | 0.00 |
| 10 | 78.53 | 79.30 | 77.80 | 0.05 | 0.07 | 0.06 | 0.00 | 0.00 | 0.00 |
| 50 | 50.42 | 50.40 | 50.34 | 0.14 | 0.16 | 0.15 | 0.00 | 0.00 | 0.01 |
| 80 | 41.34 | 41.32 | 41.28 | 0.20 | 0.23 | 0.22 | 0.01 | 0.01 | 0.01 |
| 90 | 38.86 | 38.83 | 38.81 | 0.22 | 0.25 | 0.24 | 0.01 | 0.02 | 0.02 |
| 100 | 36.54 | 36.51 | 36.48 | 0.24 | 0.28 | 0.27 | 0.01 | 0.03 | 0.03 |
| 120 | 32.17 | 32.14 | 32.11 | 0.31 | 0.35 | 0.35 | 0.03 | 0.04 | 0.05 |
| 140 | 28.10 | 28.07 | 28.04 | 0.41 | 0.46 | 0.47 | 0.06 | 0.08 | 0.09 |
| 150 | 26.22 | 26.20 | 26.17 | 0.48 | 0.54 | 0.56 | 0.09 | 0.11 | 0.12 |
| 200 | 10.85 | 10.74 | 10.50 | 4.52 | 5.05 | 5.57 | 1.31 | 1.44 | 1.56 |
| 230 | 1.45 | 1.58 | 1.67 | 14.68 | 15.25 | 15.66 | 14.39 | 14.81 | 15.32 |
| 250 | 1.05 | 1.19 | 1.28 | 21.30 | 21.03 | 20.30 | 20.86 | 20.19 | 19.71 |
| 297 | 1.52 | 1.71 | 1.88 | 21.81 | 22.00 | 22.09 | 19.92 | 20.10 | 19.55 |
| 300 | 1.70 | 1.91 | 2.10 | 17.56 | 17.52 | 17.43 | 16.43 | 16.54 | 16.13 |
| 325 | 9.41 | 9.80 | 10.25 | 2.12 | 2.18 | 2.19 | 2.09 | 2.22 | 2.27 |
| 350 | 23.93 | 24.30 | 24.79 | 0.62 | 0.69 | 0.71 | 0.59 | 0.68 | 0.75 |
| 360 | 30.60 | 30.99 | 31.57 | 0.49 | 0.55 | 0.57 | 0.45 | 0.53 | 0.59 |
| 400 | 39.93 | 39.87 | 39.68 | 0.31 | 0.36 | 0.37 | 0.23 | 0.29 | 0.33 |
| 500 | 40.78 | 40.80 | 40.83 | 0.23 | 0.27 | 0.27 | 0.11 | 0.15 | 0.19 |
| 600 | 47.48 | 47.50 | 47.57 | 0.21 | 0.25 | 0.25 | 0.09 | 0.13 | 0.17 |
| 700 | 56.61 | 56.53 | 56.93 | 0.20 | 0.24 | 0.24 | 0.09 | 0.13 | 0.17 |
| 800 | 80.20 | 81.13 | 77.97 | 0.19 | 0.24 | 0.23 | 0.10 | 0.14 | 0.19 |
| 900 | 61.36 | 61.40 | 60.42 | 0.19 | 0.24 | 0.24 | 0.11 | 0.16 | 0.21 |
| 1000 | 58.00 | 57.90 | 57.08 | 0.19 | 0.24 | 0.24 | 0.12 | 0.17 | 0.23 |
| 1200 | 58.47 | 58.67 | 57.06 | 0.18 | 0.23 | 0.24 | 0.15 | 0.21 | 0.27 |
| 1400 | 58.97 | 57.99 | 58.99 | 0.28 | 0.34 | 0.37 | 0.18 | 0.26 | 0.32 |
| 1500 | 36.79 | 36.46 | 35.84 | 7.78 | 8.07 | 9.34 | 0.20 | 0.28 | 0.35 |
| 1600 | 47.41 | 46.15 | 45.39 | 0.34 | 0.39 | 0.43 | 0.22 | 0.30 | 0.38 |
| 1800 | 58.23 | 55.78 | 53.00 | 0.14 | 0.21 | 0.24 | 0.25 | 0.32 | 0.42 |
| 2000 | 67.75 | 68.08 | 60.03 | 0.14 | 0.21 | 0.25 | 0.26 | 0.33 | 0.41 |
| 2200 | 56.37 | 56.46 | 71.27 | 0.15 | 0.24 | 0.29 | 0.25 | 0.33 | 0.39 |
| 2400 | 48.24 | 49.51 | 54.14 | 0.17 | 0.27 | 0.33 | 0.21 | 0.34 | 0.39 |
| 2500 | 45.45 | 47.12 | 50.15 | 0.17 | 0.29 | 0.34 | 0.21 | 0.34 | 0.39 |
| 2600 | 44.72 | 45.50 | 49.63 | 0.19 | 0.32 | 0.37 | 0.20 | 0.34 | 0.39 |
| 2800 | 43.17 | 42.70 | 50.08 | 0.24 | 0.37 | 0.44 | 0.23 | 0.35 | 0.45 |
| 3000 | 39.00 | 40.02 | 42.74 | 0.30 | 0.45 | 0.53 | 0.21 | 0.37 | 0.44 |
| 3200 | 37.40 | 37.54 | 40.47 | 0.36 | 0.51 | 0.60 | 0.28 | 0.36 | 0.48 |
| 3400 | 34.72 | 35.82 | 37.32 | 0.42 | 0.58 | 0.68 | 0.20 | 0.36 | 0.48 |
| 3500 | 33.72 | 34.89 | 36.35 | 0.43 | 0.62 | 0.72 | 0.22 | 0.36 | 0.48 |
| 3600 | 33.27 | 33.98 | 35.67 | 0.47 | 0.67 | 0.78 | 0.24 | 0.37 | 0.50 |
| 3800 | 32.84 | 33.40 | 35.30 | 0.77 | 0.98 | 1.12 | 0.28 | 0.44 | 0.59 |
| 4000 | 31.82 | 32.79 | 34.25 | 0.60 | 0.83 | 1.00 | 0.34 | 0.51 | 0.66 |
| 4200 | 30.26 | 31.07 | 32.39 | 0.44 | 0.66 | 0.86 | 0.51 | 0.58 | 0.73 |
| 4400 | 29.18 | 29.85 | 31.62 | 0.36 | 0.60 | 0.83 | 0.59 | 0.71 | 0.75 |
| 4500 | 28.87 | 29.20 | 30.23 | 0.33 | 0.59 | 0.82 | 0.57 | 0.80 | 0.96 |
| 4600 | 27.24 | 28.32 | 29.46 | 0.31 | 0.59 | 0.82 | 0.67 | 0.88 | 1.08 |
| 4800 | 25.77 | 26.28 | 27.11 | 0.35 | 0.60 | 0.88 | 1.30 | 0.98 | 1.44 |
| 5000 | 23.59 | 24.17 | 24.67 | 0.40 | 0.67 | 1.02 | 0.98 | 1.14 | 1.20 |
| 5200 | 21.35 | 21.86 | 22.03 | 0.56 | 0.87 | 1.29 | 1.08 | 1.31 | 1.43 |
| 5400 | 18.23 | 18.52 | 17.96 | 1.03 | 1.41 | 1.91 | 1.32 | 1.56 | 1.51 |
| 5500 | 16.72 | 16.82 | 16.58 | 1.51 | 1.97 | 2.59 | 1.52 | 1.75 | 1.75 |
| 5600 | 15.07 | 14.76 | 14.35 | 2.15 | 3.02 | 3.95 | 1.77 | 2.14 | 2.35 |
| 5800 | 10.92 | 11.13 | 11.22 | 8.36 | 10.33 | 11.00 | 3.20 | 4.07 | 4.25 |
| 6000 | 12.62 | 14.61 | 16.25 | 5.31 | 5.71 | 6.44 | 7.45 | 6.11 | 4.68 |

REV. X2
RBP-263+
101011
Page 1 of 2



IF/RF MICROWAVE COMPONENTS • ISO 9001 ISO 14001 AS 9100 CERTIFIED • RoHS compliant
P.O. Box 350166, Brooklyn, New York 11235-0003 (718) 934-4500 Fax (718) 332-4661



The Design Engineers Search Engine finds the model you need, Instantly • For detailed performance specs & shopping online see



Metal Shield Band Pass Filter

RBP-263+

Typical Performance Data

| FREQ. (MHz) | GROUP DELAY (nsec) | | |
|----------------|-----------------------|----------|----------|
| | @ -40° C | @ +25° C | @ +85° C |
| 230 | 8.89 | 8.80 | 8.74 |
| 240 | 7.68 | 7.62 | 7.58 |
| 250 | 6.85 | 6.85 | 6.80 |
| 260 | 6.55 | 6.53 | 6.54 |
| 270 | 6.63 | 6.64 | 6.64 |
| 280 | 7.02 | 7.01 | 7.02 |
| 290 | 7.84 | 7.86 | 7.93 |
| 297 | 8.88 | 8.94 | 8.99 |
| 300 | 9.50 | 9.48 | 9.61 |
| 310 | 11.06 | 10.95 | 10.89 |
| 320 | 9.45 | 9.26 | 8.99 |
| 325 | 7.84 | 7.64 | 7.43 |
| 330 | 6.30 | 6.14 | 5.92 |
| 340 | 4.03 | 3.88 | 3.74 |
| 350 | 2.56 | 2.30 | 2.36 |
| 360 | 1.13 | 0.85 | 0.51 |
| 370 | 2.87 | 4.12 | 5.37 |
| 380 | 48.02 | 39.09 | 34.55 |
| 390 | 2.75 | 3.31 | 2.54 |
| 400 | 0.33 | 0.28 | 0.35 |
| 410 | 0.13 | 0.42 | 0.07 |
| 420 | 0.60 | 0.10 | 0.20 |
| 430 | 0.29 | 0.84 | 0.53 |
| 440 | 0.49 | 0.22 | 0.03 |
| 450 | 0.37 | 0.38 | 0.38 |
| 460 | 0.60 | 0.24 | 0.26 |
| 470 | 0.91 | 0.58 | 0.65 |
| 480 | 0.08 | 0.78 | 0.53 |
| 490 | 0.22 | 1.02 | 0.09 |
| 500 | 0.07 | 0.99 | 0.13 |
| 510 | 0.60 | 0.07 | 0.52 |
| 520 | 0.06 | 0.49 | 0.47 |
| 530 | 0.30 | 0.97 | 0.03 |
| 540 | 0.30 | 1.53 | 0.22 |
| 550 | 0.15 | 0.10 | 0.64 |
| 560 | 0.89 | 0.01 | 1.08 |
| 570 | 0.18 | 0.11 | 0.64 |
| 580 | 0.27 | 0.33 | 0.06 |
| 590 | 1.06 | 0.42 | 0.76 |
| 600 | 0.44 | 1.55 | 0.58 |
| 610 | 1.63 | 0.84 | 0.20 |
| 620 | 1.31 | 2.13 | 0.22 |
| 630 | 0.30 | 0.10 | 0.36 |
| 640 | 0.51 | 1.43 | 0.29 |
| 650 | 0.17 | 3.49 | 1.96 |
| 660 | 0.40 | 0.76 | 0.48 |
| 670 | 2.98 | 0.81 | 1.38 |
| 680 | 1.89 | 3.96 | 0.14 |
| 690 | 1.33 | 0.89 | 0.52 |
| 695 | 3.29 | 3.78 | 0.63 |
| 700 | 0.58 | 1.34 | 1.07 |
| 705 | 0.67 | 2.79 | 0.97 |
| 710 | 2.61 | 4.44 | 1.85 |
| 720 | 2.88 | 0.68 | 0.37 |

REV. X2
RBP-263+
101011
Page 2 of 2



IF/RF MICROWAVE COMPONENTS • ISO 9001 ISO 14001 AS 9100 CERTIFIED RoHS compliant
P.O. Box 350166, Brooklyn, New York 11235-0003 (718) 934-4500 Fax (718) 332-4661

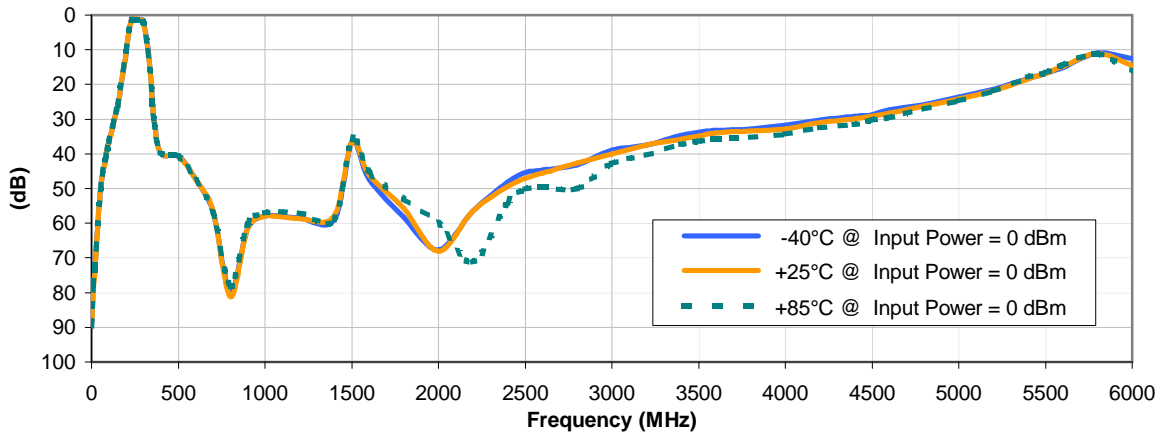


The Design Engineers Search Engine finds the model you need, Instantly • For detailed performance specs & shopping online see

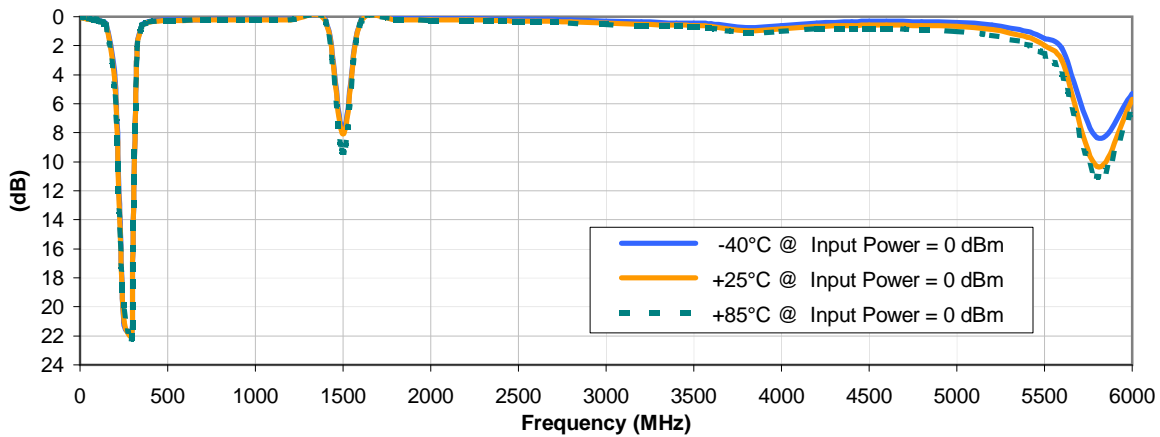


Typical Performance Curves

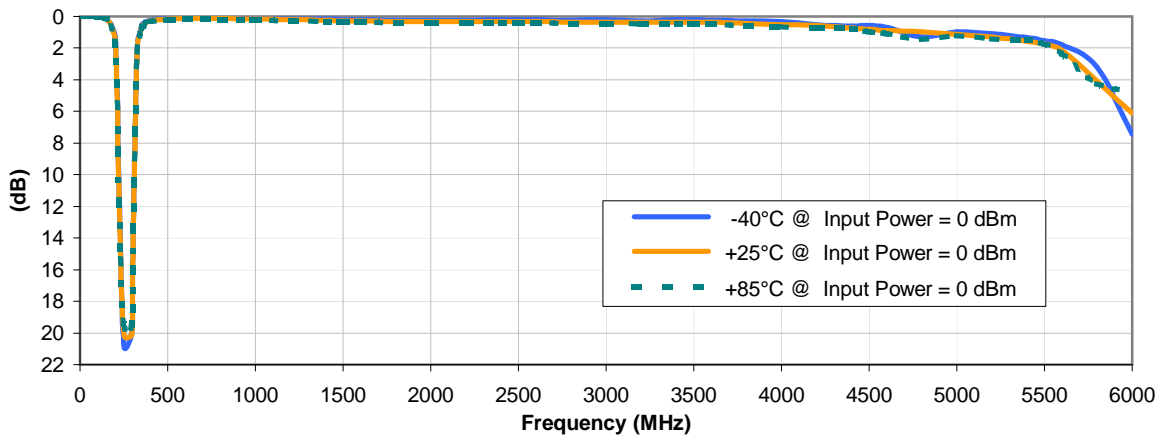
INSERTION LOSS vs. TEMPERATURE



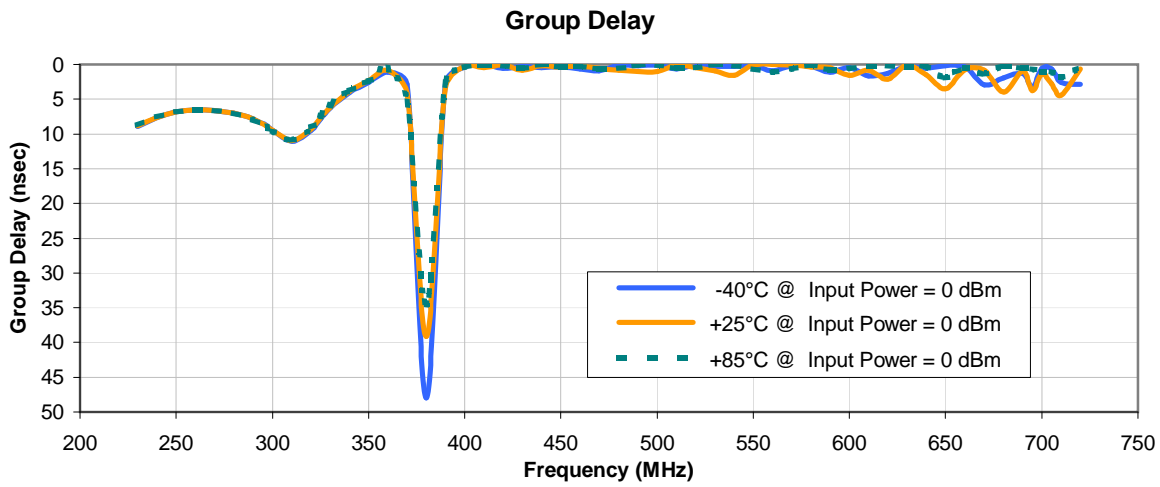
INPUT RETURN LOSS vs. TEMPERATURE



OUTPUT RETURN LOSS vs. TEMPERATURE

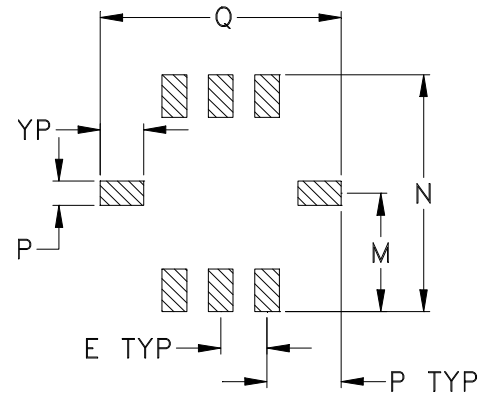
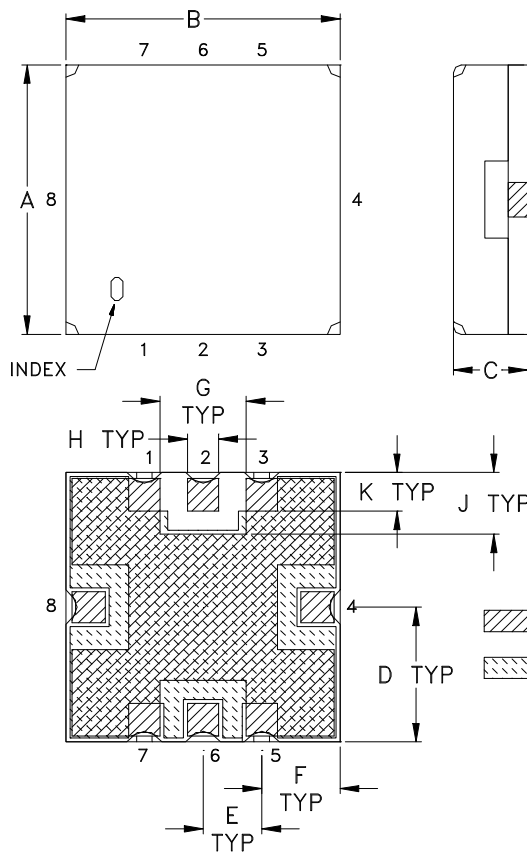


Typical Performance Curves



Outline Dimensions

GP731



| CASE # | A | B | C | D | E | F | G | H | J | K | L | M |
|--------|----------------|----------------|----------------|----------------|----------------|----------------|----------------|----------------|----------------|----------------|----------------|----------------|
| GP731 | .350 (8.89) | .350 (8.89) | .100 (2.54) | .175 (4.45) | .075 (1.91) | .100 (2.54) | .110 (2.79) | .040 (1.02) | .080 (2.03) | .050 (1.27) | .040 (1.02) | .195 (4.95) |

| CASE # | N | P | Q | R | WT. GRAM |
|--------|----------------|----------------|----------------|----------------|--------------------|
| GP731 | .390 (9.91) | .120 (3.05) | .390 (9.91) | .070 (1.78) | .4 +0.3 -0.0 |

Dimensions are in inches (mm). Tolerances: 2 Pl. $\pm .03$; 3Pl. $\pm .015$

Notes:

- Case material: Nickel-Silver alloy.
- Base: Printed wiring laminate.
- Termination finish:
 - For RoHS Case Styles: 3-5 μ inch (.08-.13 microns) Gold over 120-240 μ inch (3.05-6.10 microns) Nickel plate.
 - For RoHS-5 Case Styles: Tin-Lead plate.

Mini-Circuits®
ISO 9001 ISO 14001 CERTIFIED

ALL NEW
minicircuits.com

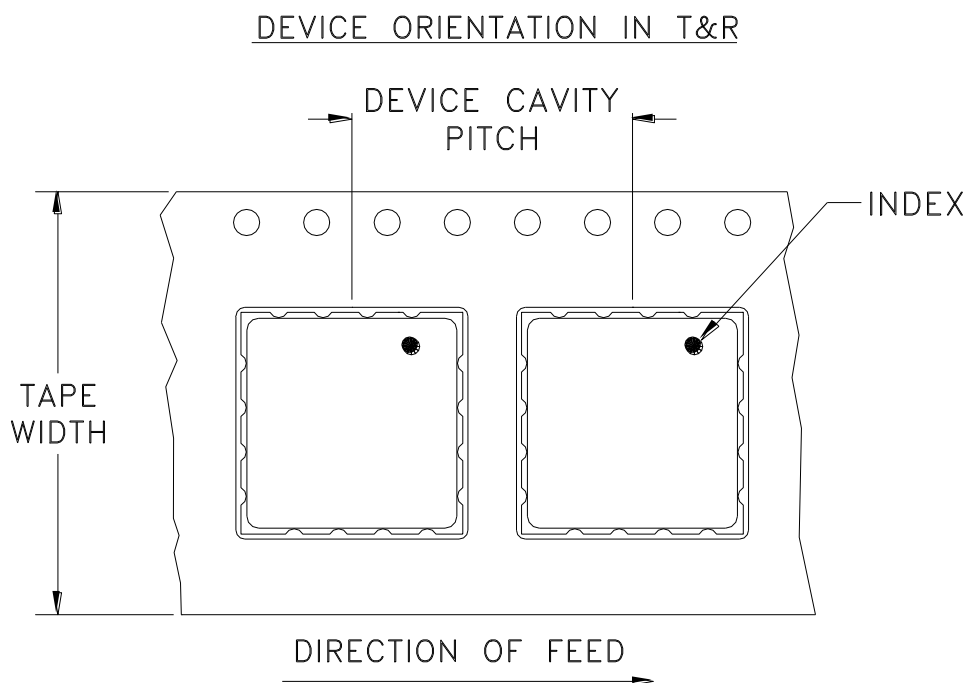
P.O. Box 350166, Brooklyn, New York 11235-0003 (718) 934-4500 Fax (718) 332-4661 For detailed performance specs & shopping online see Mini-Circuits web site



The Design Engineers Search Engine Provides ACTUAL Data Instantly From MINI-CIRCUITS At: www.minicircuits.com

RF/IF MICROWAVE COMPONENTS

Tape & Reel Packaging TR-F78



| Tape Width, mm | Device Cavity Pitch, mm | Reel Size, inches | Devices per Reel see note |
|-------------------|----------------------------|----------------------|------------------------------|
| 16 | 12 | 7 | 10 |
| | | | 20 |
| | | | 50 |
| | | | 100 |
| | | 13 | 200 |
| | | | 500, 1000 |

Note: Please consult individual model data sheet to determine device per reel availability.

Mini-Circuits carrier tape materials provide protection from ESD (Electro-Static Discharge) during handling and transportation. Tapes are static dissipative and comply with industry standards EIA-481/EIA-541.

Go to: www.minicircuits.com/pages/pdfs/tape.pdf



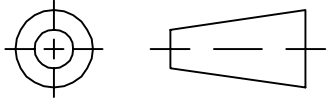
INTERNET <http://www.minicircuits.com>

P.O. Box 350166, Brooklyn, New York 11235-0003 (718) 934-4500 Fax (718) 332-4661

Distribution Centers NORTH AMERICA 800-654-7949 • 417-335-5935 • Fax 417-335-5945 • EUROPE 44-1252-832600 • Fax 44-1252-837010

Mini-Circuits ISO 9001 & ISO 14001 Certified

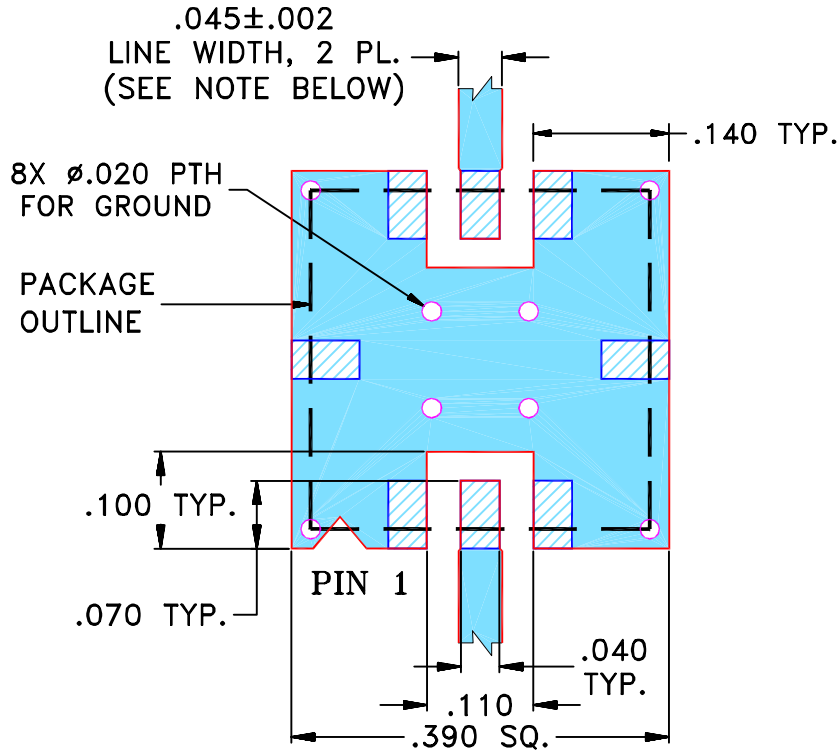
THIRD ANGLE PROJECTION



REVISIONS

| REV | ECN No. | DESCRIPTION | DATE | DR | AUTH |
|-----|---------|--|----------|-----|------|
| OR | R59289 | NEW RELEASE (FROM RAVON) | 02/05 | DK | HH |
| A | M101151 | ADDED "RBP" & CORRECTED PIN CONNECTION TO DESCRIPTION OF PL-DWG. | 10/10/05 | MMG | DJ |
| B | M102713 | UPDATED NOTES, ADDED "...WITH SMOBC" | 01/20/06 | GT | IL |

**SUGGESTED MOUNTING CONFIGURATION
FOR GP731 CASE STYLE, "qf" PIN CONNECTION.**



- NOTES:**
- TRACE WIDTH IS SHOWN FOR FR4 WITH DIELECTRIC THICKNESS $.025" \pm .002"$; COPPER: 1/2 OZ. EACH SIDE. FOR OTHER MATERIALS TRACE WIDTH MAY NEED TO BE MODIFIED.
 - BOTTOM SIDE OF THE PCB IS CONTINUOUS GROUND PLANE.



DENOTES PCB COPPER LAYOUT WITH SMOBC (SOLDER MASK OVER BARE COPPER)



DENOTES COPPER LAND PATTERN FREE OF SOLDER MASK

| UNLESS OTHERWISE SPECIFIED | INITIALS | DATE |
|----------------------------|---------------------|-----------|
| DIMENSIONS ARE IN INCHES | DRAWN DK (RAVON) | 10 FEB 05 |
| TOLERANCES ON: | CHECKED RZ (RAVON) | 10 FEB 05 |
| 2 PL DECIMALS \pm | APPROVED HH (RAVON) | 10 FEB 05 |
| 3 PL DECIMALS $\pm .005$ | | |
| ANGLES \pm | | |
| FRACTIONS \pm | | |



Mini-Circuits®

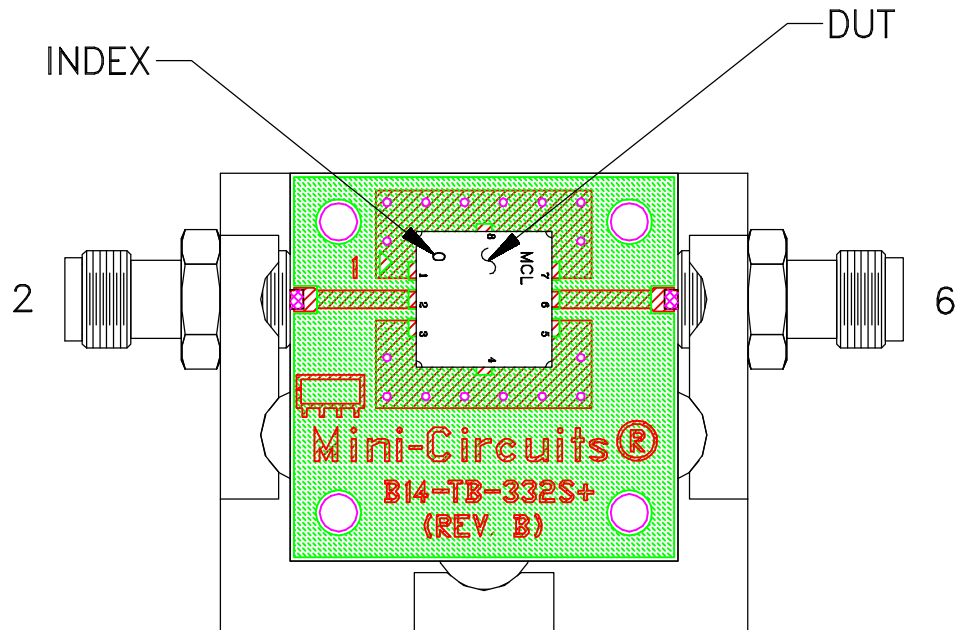
13 Neptune Avenue
Brooklyn NY 11235

PL, qf, GP731, RBP, TB-332

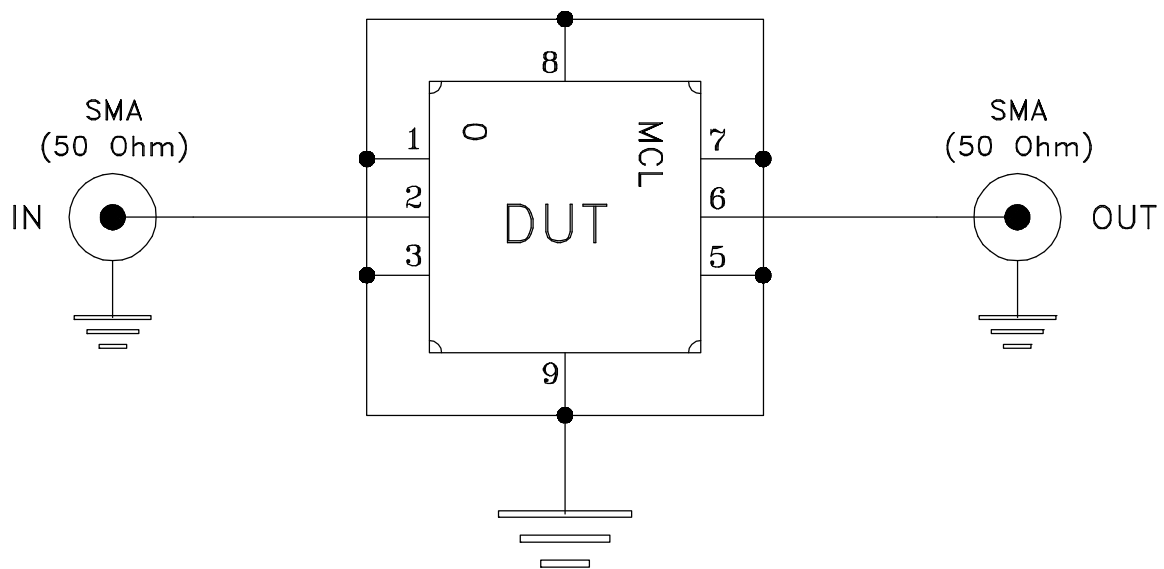
| SIZE | CODE IDENT | DRAWING NO: | REV: |
|-------|------------|-------------|---------------|
| A | 15542 | 98-PL-176 | B |
| FILE: | 98PL176 | SCALE: 5:1 | SHEET: 1 OF 1 |

Mini-Circuits®
THIS DOCUMENT AND ITS CONTENTS ARE THE PROPERTY OF MINI-CIRCUITS. EXCEPT FOR USE EXPRESSLY GRANTED, IN WRITING, TO ITS VENDORS, VENDEE AND THE UNITED STATES GOVERNMENT, MINI-CIRCUITS RESERVES ALL PROPRIETARY DESIGN, USE, MANUFACTURING AND REPRODUCTION RIGHTS THERETO. THESE CONTENTS SHALL NOT BE USED, DUPLICATED OR DISCLOSED TO ANY OUTSIDE PARTY, IN WHOLE OR IN PART, WITHOUT WRITTEN PERMISSION OF MINI-CIRCUITS.

Evaluation Board and Circuit




TB-332



Schematic Diagram

Notes:

1. 50 Ohm SMA Female connectors.
2. PCB Material: R04350 or equivalent,
Dielectric Constant=3.5, Thickness=.020 inch.

 **Mini-Circuits®**

All Mini-Circuits products are manufactured under exacting quality assurance and control standards, and are capable of meeting published specifications after being subjected to any or all of the following physical and environmental test.

| Specification | Test/Inspection Condition | Reference/Spec |
|--------------------------------|---|--|
| Operating Temperature | -40° to 85° C Ambient Environment | Individual Model Data Sheet |
| Storage Temperature | -55° to 100° C Ambient Environment | Individual Model Data Sheet |
| HAST | 130°C, 85% RH, 96 hours | JESD22-A110 |
| Humidity | 90 to 95% RH, 240 hours, 50°C | MIL-STD-202, Method 103, Condition A, Except 50°C and end-point electrical test done within 12 hours |
| Thermal Shock | -55° to 100°C, 100 cycles | MIL-STD-202, Method 107, Condition A-3, except +100°C |
| Solder Reflow Heat | Sn-Pb Eutectic Process: 225°C peak Pb-Free Process, 245°C peak | J-STD-020, Table 4-1, 4-2 and 5-2, Figure 5-1 |
| Solderability | 10X Magnification | J-STD-002, Para 4.2.5, Test S, 95% Coverage |
| Vibration (High Frequency) | 20g peak, 20-2000 Hz, 4 times in each of three axes (total 12) | MIL-STD-883, Method 2007.3, Condition A |
| Mechanical Shock | 50g, 11 ms, 1/2-sine, 18 shocks: 3 each direction, each of 3 axes | MIL-STD-202, Method 213, Condition A |
| Marking Resistance to Solvents | Isopropyl alcohol + mineral spirits at 25°C; terpene defluxer at 25°C; distilled water + proylene glycol monomethyl ether + monoethanolamine at 63°C to 70°C | MIL-STD-202, Method 215 |