

Surface Mount

Bandpass Filter

RBPF-440-1+

50Ω 130 to 750 MHz

Features

- Miniature shielded package
- Low insertion loss
- Fast roll-off

CASE STYLE: 99-01-3289

Applications

- Defense/Military
- Military Radio Communications

Electrical Specifications

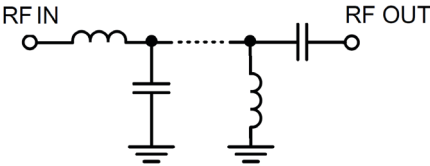
Parameter		F#	Frequency (MHz)	Min.	Typ.	Max.	Unit
Pass Band	Center Frequency	F1-F2	—	—	440	—	MHz
	Insertion Loss	F1-F2	130 - 750	—	1.9	2.4	dB
	Return Loss	F1-F2	130 - 750	12	14	—	dB
Stop Band, Lower	Rejection	DC-F3	DC - 108	20	—	—	dB
Stop Band, Upper	Rejection	F4-F5	860 - 2500	20	—	—	dB

Maximum Ratings

Operating Temperature	-40°C to 85°C
Storage Temperature	-55°C to 100°C
RF Power Input	27 dBm

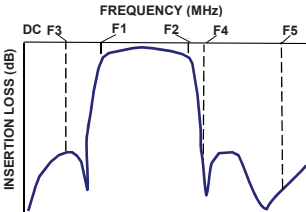
Permanent damage may occur if any of these limits are exceeded.

Functional Schematic



Typical Performance Data at 25°C

Typical Frequency Response



+RoHS Compliant

The +Suffix identifies RoHS Compliance. See our web site for RoHS Compliance methodologies and qualifications

Notes

- A. Performance and quality attributes and conditions not expressly stated in this specification document are intended to be excluded and do not form a part of this specification document.
- B. Electrical specifications and performance data contained in this specification document are based on Mini-Circuit's applicable established test performance criteria and measurement instructions.
- C. The parts covered by this specification document are subject to Mini-Circuits standard limited warranty and terms and conditions (collectively, "Standard Terms"); Purchasers of this part are entitled to the rights and benefits contained therein. For a full statement of the Standard Terms and the exclusive rights and remedies thereunder, please visit Mini-Circuits' website at www.minicircuits.com/MCLStore/terms.jsp



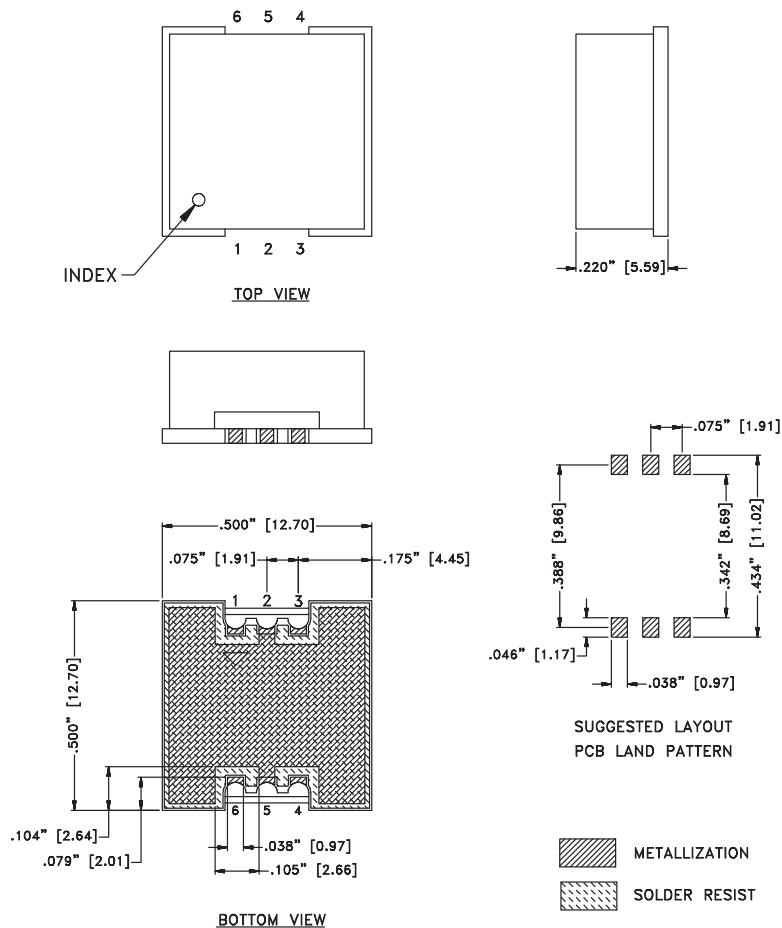
www.minicircuits.com P.O. Box 350166, Brooklyn, NY 11235-0003 (718) 934-4500 sales@minicircuits.com

REV.X0
ECO-009352
RBPF-440-1+
EDUXXXX
URJ
210823
Page 1 of 2

Pad Connections

INPUT	1
OUTPUT	6
GROUND	2,5
NOT USED	3,4

Outline Drawing



Notes

A. Performance and quality attributes and conditions not expressly stated in this specification document are intended to be excluded and do not form a part of this specification document.

B. Electrical specifications and performance data contained in this specification document are based on Mini-Circuit's applicable established test performance criteria and measurement instructions.

C. The parts covered by this specification document are subject to Mini-Circuits standard limited warranty and terms and conditions (collectively, "Standard Terms"); Purchasers of this part are entitled to the rights and benefits contained therein. For a full statement of the Standard Terms and the exclusive rights and remedies thereunder, please visit Mini-Circuits' website at www.minicircuits.com/MCLStore/terms.jsp