

Engineering Development Model

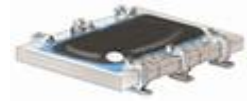
Power Splitter/Combiner

SBR-ED7755/1

2 Way-0°

Important Note

This model has been designed, built and tested in our engineering department. Performance data represents model capability. At present it is a non-catalog model. On request, we can supply a final specification sheet, part number and price/delivery information.



Please click "Back", and then click "Contact Us" for Applications support.

CASE STYLE : SM26

ELECTRICAL SPECIFICATIONS 50Ω @ +25°C					
Parameter		Min.	Typ.	Max.	Units
Frequency		962		2223	MHz
Isolation	962 - 2223 MHz		16		dB
Insertion Loss Above 3.0 dB	962 - 2223 MHz		0.49		dB
Phase Unbalance	962 - 2223 MHz		2.616		deg.
Amplitude Unbalance	962 - 2223 MHz		0.110		dB
VSWR	SUM Port		1.61		(:1)
	OUT Ports		1.22		(:1)

MAXIMUM RATINGS	
Operating Temperature	-40°C to 85°C
Storage Temperature	-55°C to 100°C

PIN CONNECTIONS	
SUM PORT	2
PORT 1	4
PORT 2	6
GND EXT	1, 3, 5

Functional Diagram



2 Way-0° Power Splitter/Combiner

SBR-ED7755/1

Typical Performance Data

FREQ. (MHz)	TOTAL LOSS ¹ (dB)		AMP. UNBAL. (dB)	ISOLATION (dB)	PHASE UNBAL. (deg.)	FREQ. (MHz)	VSWR (:1)		
	S-1	S-2					S	1	2
962.0	3.61	3.51	0.10	10.09	1.70	962.0	1.84	1.19	1.18
1081.0	3.58	3.48	0.10	11.49	1.90	1081.0	1.79	1.18	1.19
1200.0	3.56	3.46	0.10	12.99	2.14	1200.0	1.72	1.20	1.22
1225.0	3.55	3.44	0.10	13.35	2.13	1225.0	1.70	1.21	1.22
1250.0	3.51	3.42	0.09	13.72	2.18	1250.0	1.69	1.21	1.23
1275.0	3.53	3.43	0.09	14.06	2.09	1275.0	1.67	1.22	1.23
1300.0	3.53	3.43	0.10	14.40	2.17	1300.0	1.66	1.22	1.24
1325.0	3.52	3.42	0.10	14.78	2.29	1325.0	1.64	1.22	1.24
1350.0	3.53	3.43	0.10	15.20	2.36	1350.0	1.63	1.23	1.24
1375.0	3.52	3.43	0.09	15.60	2.35	1375.0	1.61	1.23	1.24
1400.0	3.51	3.42	0.09	15.93	2.45	1400.0	1.60	1.23	1.24
1425.0	3.52	3.43	0.09	16.30	2.52	1425.0	1.59	1.23	1.24
1450.0	3.52	3.41	0.11	16.73	2.47	1450.0	1.57	1.24	1.24
1475.0	3.51	3.41	0.10	17.12	2.57	1475.0	1.56	1.24	1.24
1500.0	3.52	3.42	0.10	17.49	2.59	1500.0	1.55	1.24	1.24
1525.0	3.54	3.43	0.11	17.89	2.65	1525.0	1.54	1.24	1.24
1550.0	3.52	3.41	0.10	18.24	2.63	1550.0	1.53	1.24	1.24
1575.0	3.53	3.41	0.12	18.63	2.77	1575.0	1.51	1.24	1.24
1600.0	3.55	3.43	0.12	18.97	2.78	1600.0	1.50	1.24	1.24
1755.6	3.57	3.42	0.15	20.14	3.15	1755.6	1.46	1.25	1.22
1911.1	3.59	3.44	0.15	19.06	3.53	1911.1	1.47	1.24	1.20
2066.7	3.62	3.47	0.15	16.78	4.10	2066.7	1.52	1.22	1.16
2222.2	3.65	3.48	0.17	14.52	4.65	2222.2	1.61	1.20	1.12

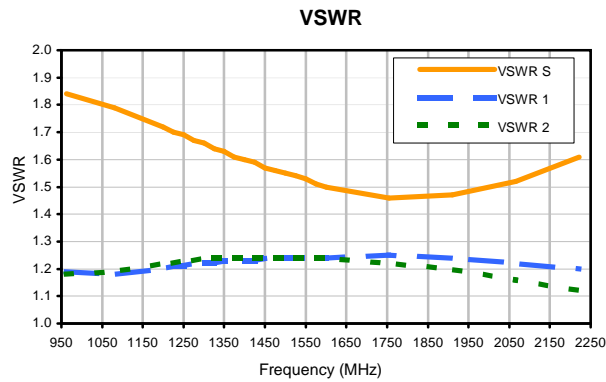
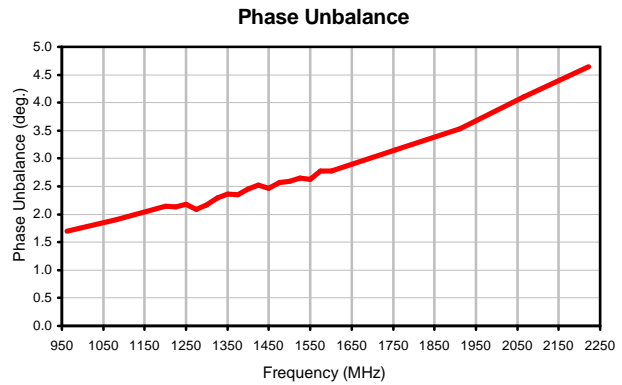
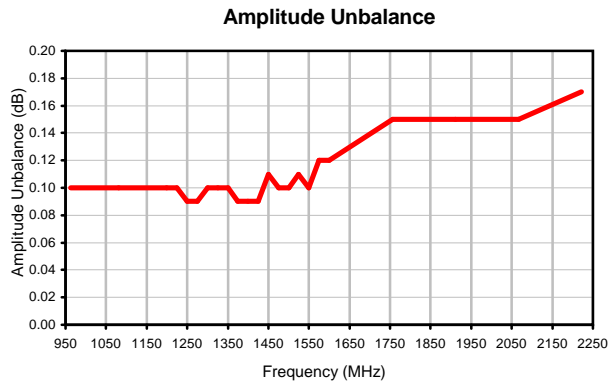
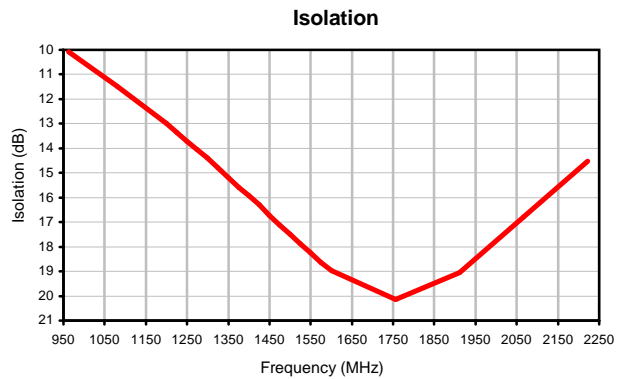
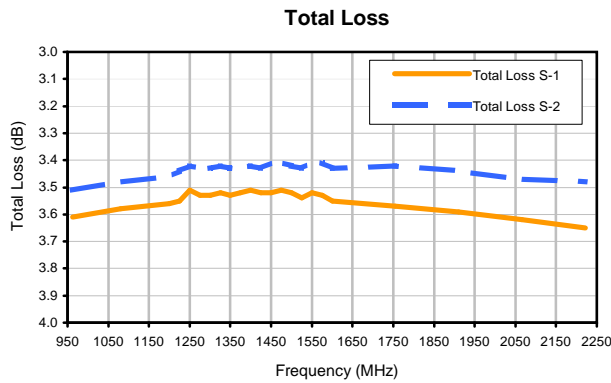
¹ Total Loss = Insertion Loss + 3dB Splitter Loss



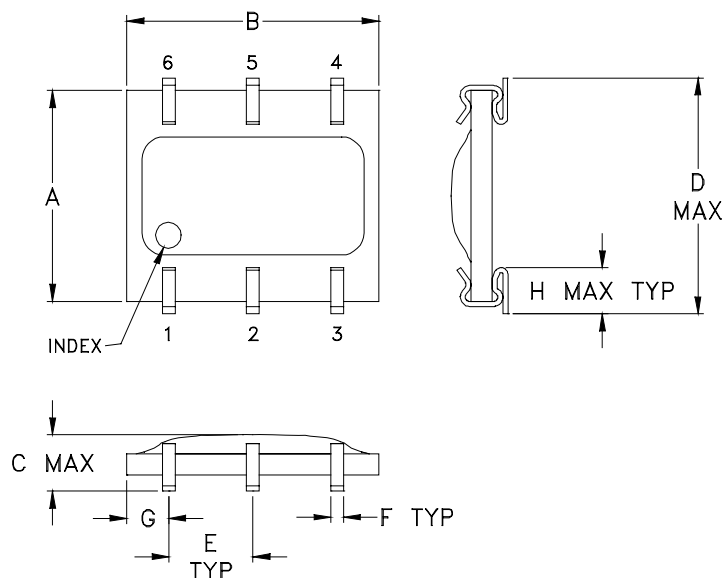
2 Way-0° Power Splitter/Combiner

SBR-ED7755/1

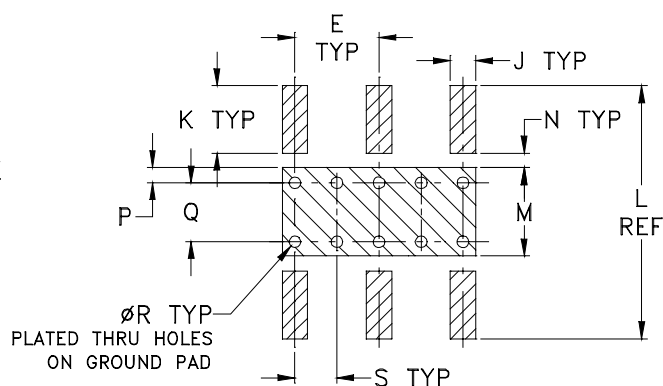
Typical Performance Curves



Outline Dimensions



PCB Land Pattern



Suggested Layout,

Tolerance to be within $\pm .002$
 ADJACENT GROUND PINS SHALL BE CONNECTED
 TO EACH OTHER AND TO GROUND PAD

CASE#	A	B	C	D	E	F	G	H	J	K	L	M	N
SM26	.250 (6.35)	.300 (7.62)	.095 (2.41)	.290 (7.37)	.100 (2.54)	.015 (.38)	.050 (1.27)	.060 (1.52)	.030 (.76)	.080 (2.03)	.300 (7.62)	.100 (2.54)	.020 (.51)

CASE#	P	Q	R	S	WT, GRAM
SM26	.015 (.38)	.070 (1.78)	.014 (.36)	.050 (1.27)	.3

Dimensions are in inches (mm). Tolerances: 2 Pl. $\pm .005$; 3 Pl. $\pm .005$

Notes:

- Case material: Plastic encapsulation on Ceramic base.
- Termination finish:
 For RoHS Case Styles: Tin plate over Nickel plate.
 For RoHS-5 Case Styles: Tin-Lead plate.

Tape & Reel Packaging TR-F34



Tape Width, mm	Device Cavity Pitch, mm	Reel Size, inches	Devices per Reel see note	
16	12	7	Small quantity standard (see note)	20
				50
			Standard	100
				200
		13	Standard	500
				1000

Note: Availability of small reel quantity varies by model.
Refer to pricing and availability on individual model dashboard.

Mini-Circuits carrier tape materials provide protection from ESD (Electro-Static Discharge) during handling and transportation. Tapes are static dissipative and comply with industry standards EIA-481/EIA-541.

Go to: www.minicircuits.com/pages/pdfs/tape.pdf



INTERNET <http://www.minicircuits.com>

P.O. Box 350166, Brooklyn, New York 11235-0003 (718) 934-4500 Fax (718) 332-4661

Distribution Centers NORTH AMERICA 800-654-7949 • 417-335-5935 • Fax 417-335-5945 • EUROPE 44-1252-832600 • Fax 44-1252-837010

Mini-Circuits ISO 9001 & ISO 14001 Certified