



KEY FEATURES

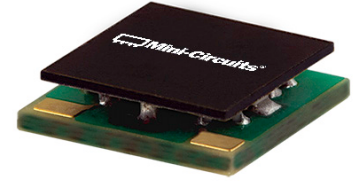
- Low Insertion Loss, 1.5 dB Typ.
- High Rejection, 40 dB Typ.
- Sharp Insertion Loss Roll-off
- Good Return Loss, 47 dB Typ.
- Ultra Miniature Surface Mount Package

APPLICATIONS

- Wireless Communications
- Receivers / Transformers
- Lab Use

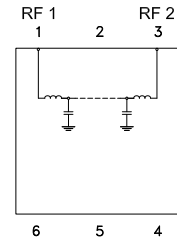
PRODUCT OVERVIEW

The ULP-105+ is a low pass filter in a top hat package (size of 0.25" x 0.25") fabricated using SMT technology. Covering DC to 105 MHz band width, these units offer good matching within the passband and high rejection. This model uses a miniature high Q capacitors and chip inductors for high reliability. In addition it has repeatable performance across production lots and consistent performance across temperature.



Generic photo used for illustration purposes only

FUNCTIONAL DIAGRAM



ELECTRICAL SPECIFICATIONS^{1,2,3} AT +25°C

Parameter	F#	Frequency (MHz)	Min.	Typ.	Max.	Units	
Passband	Insertion Loss	DC-F1	DC - 105	—	1.5	2	dB
	Freq. Cut-Off	Fc	116	—	3.0	—	dB
	Return Loss	DC-F1	DC - 105	—	26	—	dB
Stopband	Rejection	F2-F3	145 - 165	20	27	—	dB
		F3-F4	165 - 1000	40	47	—	
		F4-F5	1000 - 3000	—	20	—	

1. Tested in Evaluation Board P/NTB-ULP-105+

2. This filter is bi-directional RF1 and RF2 ports may be interchanged, see S-Parameters for actual performance.

3. In applications where DC voltage and/or current is present at either the input or output ports, external DC blocking capacitors are required.

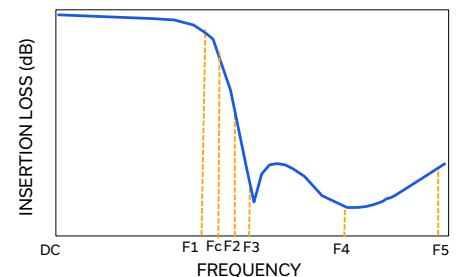
ABSOLUTE MAXIMUM RATINGS⁴

Parameter	Ratings
Operating Temperature	-40°C to + 85°C
Storage Temperature	-55°C to +100°C
Input Power ⁵	0.15 W max.

4. Permanent damage may occur if any of these limits are exceeded.

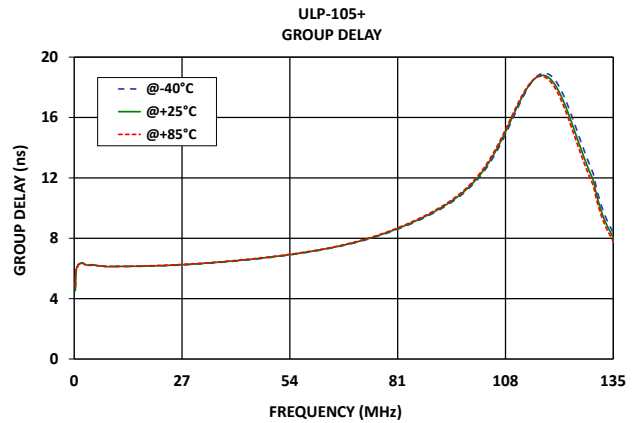
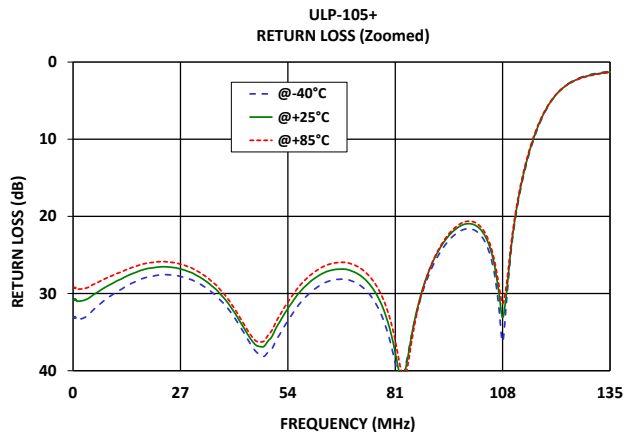
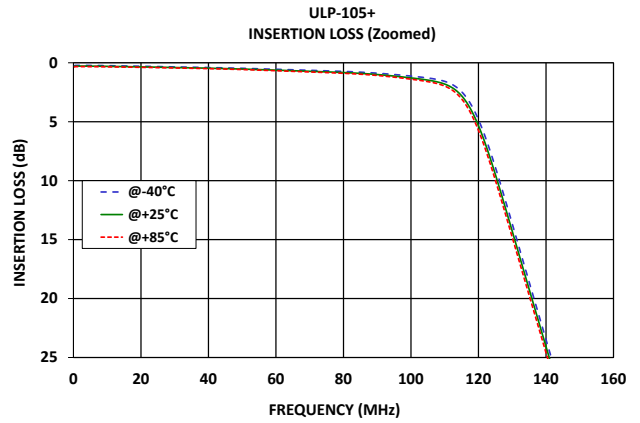
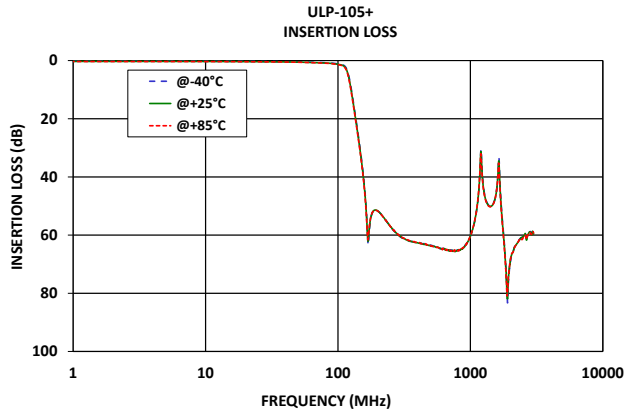
5. Power rating applies only to signals within the passband.

TYPICAL FREQUENCY RESPONSE AT +25°C





TYPICAL PERFORMANCE GRAPHS





FUNCTIONAL DIAGRAM

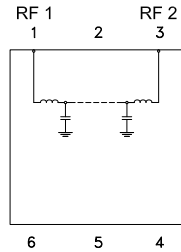


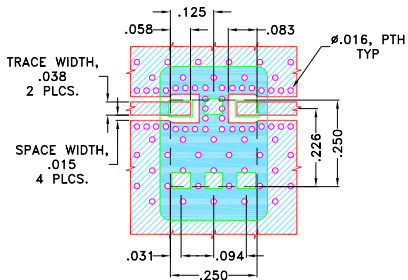
Figure 1. ULP-105+ Functional Diagram

PAD DESCRIPTION

Function	Pad Number	Description
RF ₁ (Note 2)	1	Connects to RF Input Port
RF ₂ (Note 2)	3	Connects to RF Output Port
GROUND	2,4,5,6	Connects to Ground on PCB, (See drawing PL-484)
NC	—	No connection, not used internally. See drawing PL-484 for connection to PCB

SUGGESTED PCB LAYOUT (PL-484)

SUGGESTED MOUNTING CONFIGURATION FOR QA2224 CASE STYLE "06FL09" PIN CODE



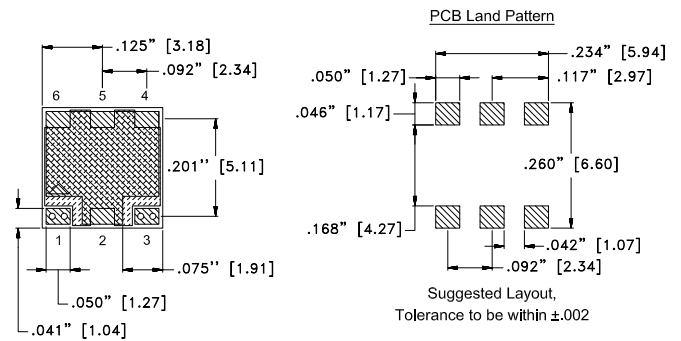
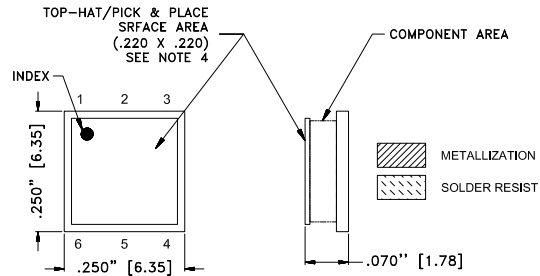
NOTES:

- TRACE WIDTH IS SHOWN FOR ROGERS (R04350B) WITH DIELECTRIC THICKNESS .020"±.0015". COPPER: 1/2 OZ. EACH SIDE. FOR OTHER MATERIALS TRACE WIDTH MAY NEED TO BE MODIFIED.
- BOTTOM SIDE OF THE PCB IS CONTINUOUS GROUND PLANE.

- DENOTES PCB COPPER LAYOUT WITH SMOBC (SOLDER MASK OVER BARE COPPER)
- DENOTES COPPER LAND PATTERN FREE OF SOLDERMASK

Figure 2. Suggested PCB Layout PL-484

CASE STYLE DRAWING



Weight: .25 gram

Dimensions are in inches (mm). Tolerances: 2PI. ± .03; 3PI. ± .015

PRODUCT MARKING*: ULP-105

*Marking may contain other features or characters for internal lot control.



LUMPED LC SURFACE MOUNT ^{top hat}

Low Pass Filter

ULP-105+

50Ω

DC to 105 MHz

ADDITIONAL DETAILED INFORMATION IS AVAILABLE ON OUR DASH BOARD.

[CLICK HERE](#)

Performance Data and Graphs	Data
	Graphs
	S-Parameter (S2P Files) Data Set (.zip file) De-embedded to device pads
Case Style	QA2224 Lead Finish: Gold over Nickel Plate
RoHS Status	Compliant
Tape and Reel	TR-F34
Suggested Layout for PCB Design	PL-484
Evaluation Board	TB-ULP-105+
	Gerber File
Environmental Rating	ENV03T2

NOTES

- A. Performance and quality attributes and conditions not expressly stated in this specification document are intended to be excluded and do not form a part of this specification document.
- B. Electrical specifications and performance data contained in this specification document are based on Mini-Circuits' applicable established test performance criteria and measurement instructions.
- C. The parts covered by this specification document are subject to Mini-Circuits' standard limited warranty and terms and conditions (collectively, "Standard Terms"); Purchasers of this part are entitled to the rights and benefits contained therein. For a full statement of the standard terms and the exclusive rights and remedies thereunder, please visit Mini-Circuits' website at www.minicircuits.com/terms/viewterm.html



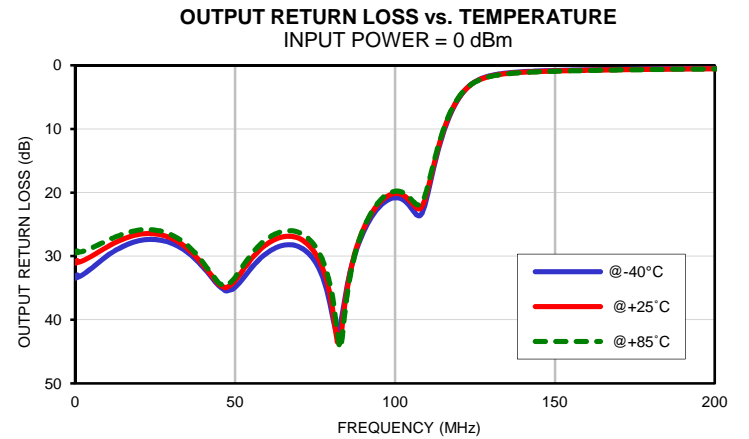
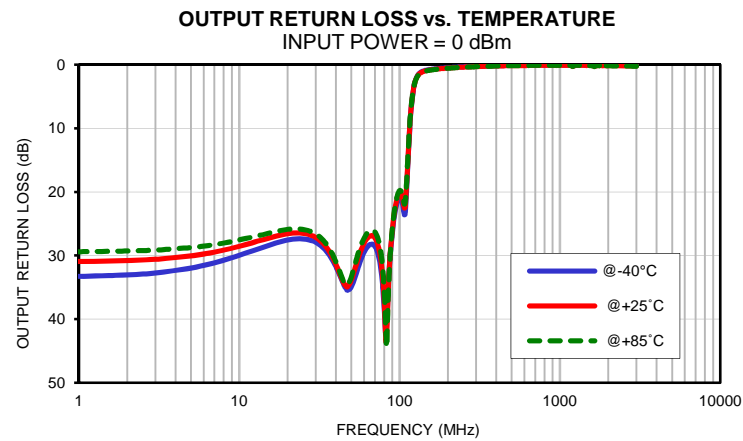
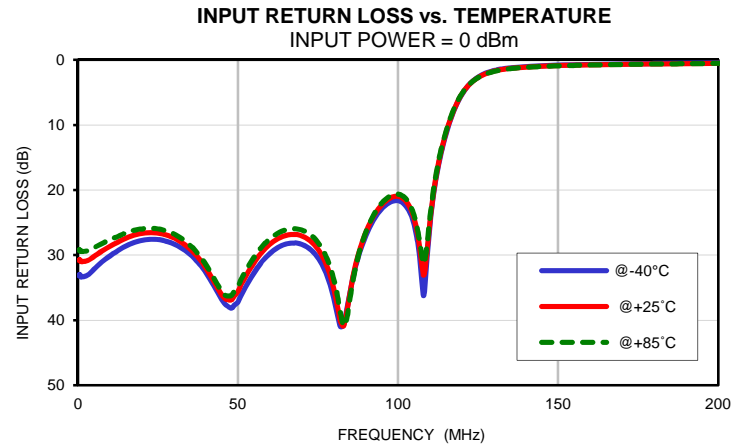
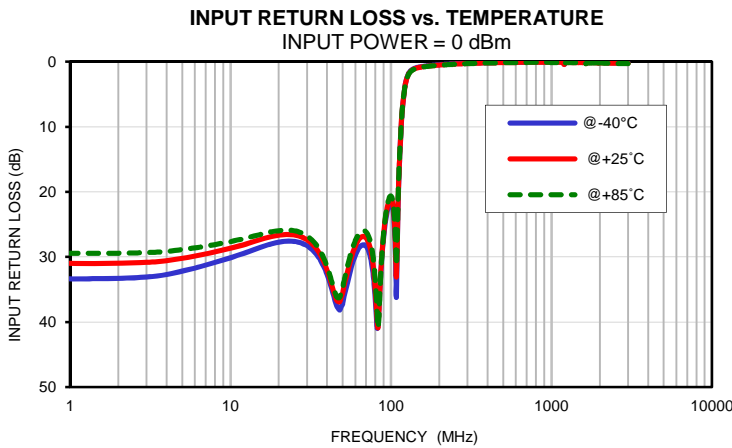
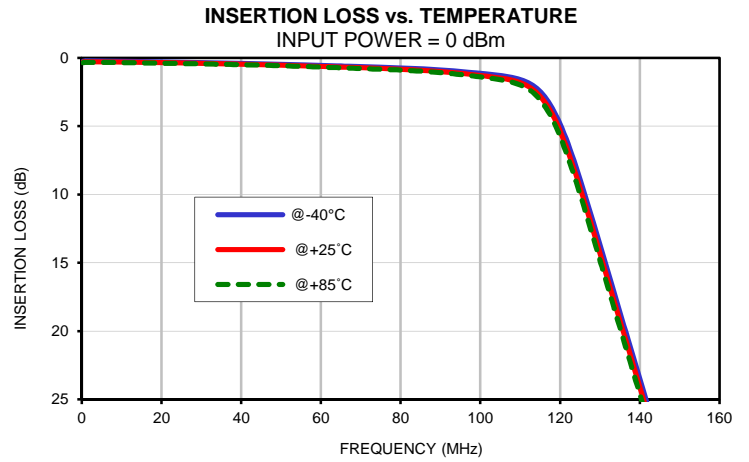
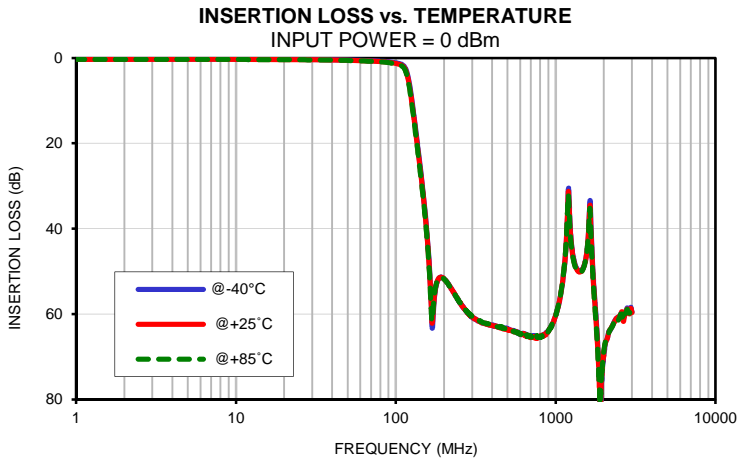
Typical Performance Data

FREQ. (MHz)	INSERTION LOSS			INPUT RETURN LOSS			OUTPUT RETURN LOSS		
	(dB)			(dB)			(dB)		
	@-40°C	@+25°C	@+85°C	@-40°C	@+25°C	@+85°C	@-40°C	@+25°C	@+85°C
1	0.22	0.28	0.33	33.36	30.99	29.42	33.29	30.95	29.40
2	0.22	0.28	0.33	33.28	30.96	29.41	33.04	30.79	29.29
5	0.23	0.29	0.33	32.15	30.20	28.85	31.98	30.07	28.75
10	0.25	0.30	0.35	30.12	28.66	27.65	29.94	28.53	27.54
15	0.27	0.32	0.36	28.61	27.41	26.60	28.46	27.31	26.52
20	0.29	0.35	0.39	27.75	26.67	25.97	27.54	26.55	25.88
25	0.32	0.37	0.41	27.61	26.61	25.97	27.40	26.52	25.91
50	0.47	0.53	0.57	37.19	35.58	34.78	34.90	33.87	33.33
75	0.68	0.77	0.83	30.41	29.09	28.05	30.85	29.49	28.40
100	1.13	1.28	1.39	21.63	20.96	20.63	20.80	20.11	19.78
105	1.29	1.47	1.60	25.25	24.34	23.86	22.38	21.48	21.01
110	1.58	1.81	1.98	25.08	24.64	24.08	20.73	19.96	19.41
116	2.78	3.16	3.45	9.74	9.55	9.38	9.37	9.11	8.90
120	4.83	5.34	5.74	5.26	5.21	5.14	5.11	5.02	4.94
125	8.86	9.47	9.96	2.64	2.69	2.72	2.57	2.61	2.62
130	13.66	14.29	14.80	1.63	1.71	1.76	1.59	1.67	1.71
135	18.59	19.20	19.72	1.21	1.30	1.35	1.19	1.27	1.32
137	20.54	21.15	21.67	1.11	1.20	1.25	1.10	1.18	1.23
140	23.48	24.07	24.59	1.01	1.09	1.13	0.99	1.07	1.12
142	25.43	26.02	26.54	0.95	1.03	1.07	0.94	1.02	1.06
144	27.39	27.99	28.50	0.90	0.98	1.02	0.90	0.97	1.02
145	28.38	28.97	29.49	0.88	0.96	1.00	0.88	0.95	1.00
148	31.39	31.98	32.50	0.83	0.90	0.94	0.83	0.90	0.94
150	33.44	34.04	34.58	0.80	0.87	0.91	0.80	0.87	0.91
152	35.56	36.17	36.72	0.77	0.84	0.88	0.78	0.84	0.88
154	37.77	38.38	38.96	0.75	0.81	0.85	0.75	0.82	0.86
156	40.10	40.75	41.34	0.72	0.79	0.83	0.73	0.80	0.83
158	42.60	43.28	43.89	0.70	0.77	0.81	0.71	0.78	0.81
160	45.37	46.07	46.74	0.68	0.75	0.79	0.69	0.76	0.79
162	48.47	49.23	49.95	0.67	0.73	0.76	0.67	0.74	0.77
164	52.13	52.95	53.75	0.65	0.71	0.75	0.66	0.72	0.76
165	54.28	55.18	55.95	0.64	0.71	0.74	0.65	0.71	0.75
168	61.98	61.77	61.62	0.62	0.68	0.71	0.62	0.69	0.72
170	62.49	61.12	60.18	0.61	0.67	0.70	0.61	0.68	0.71
200	51.70	51.73	51.81	0.45	0.50	0.53	0.46	0.52	0.54
250	57.17	57.11	57.14	0.30	0.35	0.38	0.31	0.37	0.39
300	60.78	60.58	60.62	0.22	0.26	0.28	0.23	0.28	0.30
350	62.15	62.05	62.00	0.17	0.21	0.23	0.18	0.22	0.24
400	62.64	62.66	62.62	0.13	0.17	0.19	0.14	0.18	0.19
450	63.04	63.11	63.05	0.11	0.15	0.16	0.12	0.16	0.17
500	63.47	63.66	63.65	0.09	0.13	0.14	0.09	0.14	0.14
600	64.71	64.67	64.73	0.07	0.10	0.12	0.06	0.11	0.12
750	65.37	65.29	65.53	0.05	0.09	0.10	0.03	0.09	0.09
1000	60.29	60.23	60.35	0.04	0.09	0.10	0.01	0.08	0.09
1250	42.75	43.23	43.64	0.06	0.11	0.12	0.01	0.09	0.10
1500	48.83	48.94	49.00	0.06	0.11	0.14	0.01	0.09	0.11
1750	55.81	56.54	57.00	0.08	0.14	0.16	0.02	0.11	0.13
1800	62.40	63.07	63.82	0.08	0.14	0.16	0.02	0.11	0.13
1900	81.06	81.36	79.82	0.08	0.14	0.17	0.03	0.12	0.14
2000	69.54	68.76	68.67	0.09	0.16	0.18	0.04	0.13	0.15
2100	65.81	65.77	65.91	0.11	0.18	0.20	0.05	0.14	0.17
2200	63.72	63.53	63.53	0.13	0.19	0.22	0.05	0.15	0.18
2300	62.10	62.28	62.20	0.13	0.20	0.23	0.06	0.15	0.18
2400	61.05	60.97	61.00	0.14	0.21	0.24	0.06	0.16	0.19
2500	61.05	60.46	60.96	0.15	0.22	0.25	0.07	0.16	0.20
2600	59.79	59.49	60.09	0.16	0.23	0.26	0.08	0.17	0.21
2700	59.81	60.24	60.16	0.16	0.23	0.27	0.08	0.17	0.21
2800	58.59	58.85	58.93	0.16	0.24	0.27	0.08	0.18	0.21
2900	59.53	59.97	59.77	0.16	0.24	0.28	0.08	0.18	0.22
3000	59.53	59.66	59.28	0.16	0.24	0.28	0.08	0.18	0.21

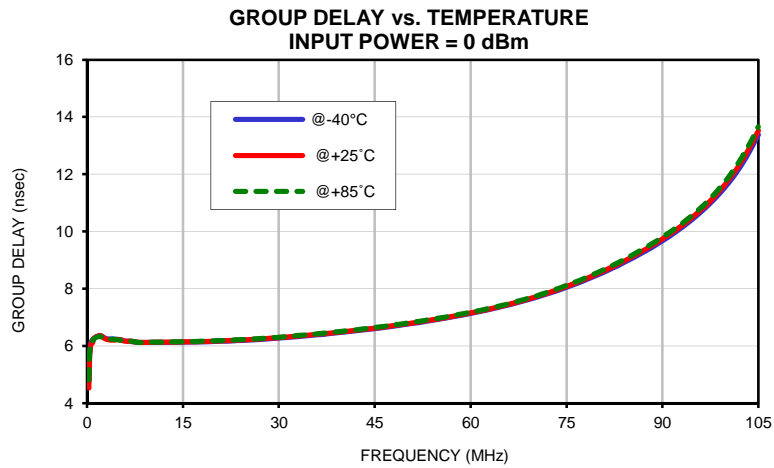
Typical Performance Data

FREQ. (MHz)	GROUP DELAY		
	(nsec)		
	@-40°C	@+25°C	@+85°C
1	6.26	6.24	6.24
2	6.37	6.37	6.34
4	6.25	6.20	6.24
6	6.18	6.17	6.19
8	6.13	6.13	6.13
10	6.13	6.13	6.14
12	6.13	6.13	6.14
14	6.13	6.14	6.15
16	6.14	6.15	6.16
18	6.15	6.16	6.17
20	6.16	6.17	6.18
22	6.18	6.19	6.20
24	6.20	6.21	6.22
26	6.22	6.23	6.25
28	6.25	6.26	6.28
30	6.28	6.29	6.31
32	6.31	6.33	6.35
34	6.35	6.37	6.39
36	6.39	6.41	6.43
38	6.44	6.45	6.47
40	6.48	6.50	6.52
42	6.53	6.55	6.57
44	6.58	6.60	6.62
46	6.63	6.65	6.67
48	6.70	6.71	6.74
50	6.76	6.78	6.80
52	6.82	6.84	6.87
54	6.90	6.92	6.94
56	6.97	6.99	7.01
58	7.05	7.07	7.10
60	7.14	7.16	7.18
62	7.23	7.25	7.27
64	7.33	7.35	7.37
66	7.44	7.46	7.48
68	7.55	7.58	7.61
70	7.68	7.71	7.73
72	7.82	7.85	7.88
74	7.97	8.00	8.04
76	8.13	8.17	8.20
78	8.31	8.35	8.39
80	8.50	8.54	8.58
82	8.70	8.75	8.80
84	8.92	8.97	9.02
86	9.15	9.21	9.26
88	9.40	9.46	9.52
90	9.67	9.74	9.80
91	9.82	9.89	9.95
92	9.97	10.04	10.11
93	10.13	10.20	10.27
94	10.30	10.37	10.44
95	10.48	10.55	10.63
96	10.67	10.75	10.83
97	10.88	10.96	11.04
98	11.10	11.19	11.28
99	11.34	11.43	11.53
100	11.61	11.70	11.80
101	11.90	12.00	12.11
102	12.21	12.33	12.44
103	12.57	12.69	12.81
105	13.38	13.52	13.66

Typical Performance Curves

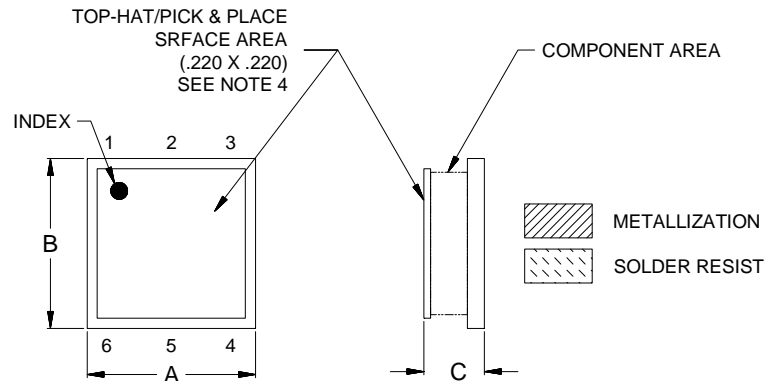


Typical Performance Curves

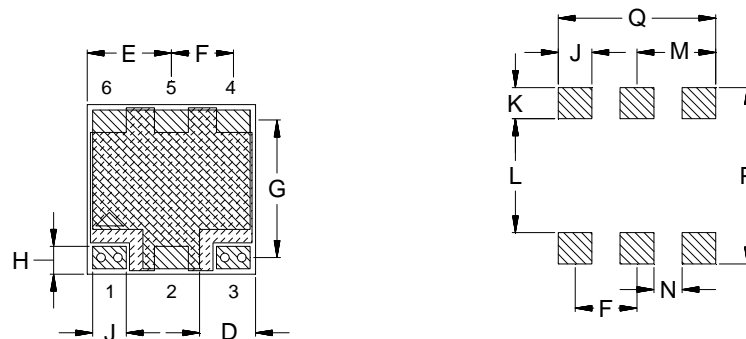


Outline Dimensions

QA2224



PCB Land Pattern



Suggested Layout,
Tolerance to be within $\pm .002$

CASE#	A	B	C	D	E	F	G	H	J	K	L	M
QA2224	.250 (6.35)	.250 (6.35)	.070 (1.78)	.075 (1.91)	.125 (3.18)	.092 (2.34)	.201 (5.11)	.041 (1.04)	.050 (1.27)	.046 (1.17)	.168 (4.27)	.117 (2.97)

CASE#	N	P	Q	WT. GRAM
QA2224	.042 (1.07)	.260 (6.60)	.234 (5.94)	0.25

Dimensions are in inches (mm). Tolerances: 2Pl. $\pm .03$; 3Pl. $\pm .015$

Notes:

- Case material: Ceramic base.
- Base: Printed wiring laminate.
- Termination finish:
For RoHS Case Styles: 3-5 μ inch Gold over 120-240 μ inch Nickel plate.
For RoHS-5 Case Styles: Tin-Lead plate.
- Top-Hat total thickness: .013 inches MAX



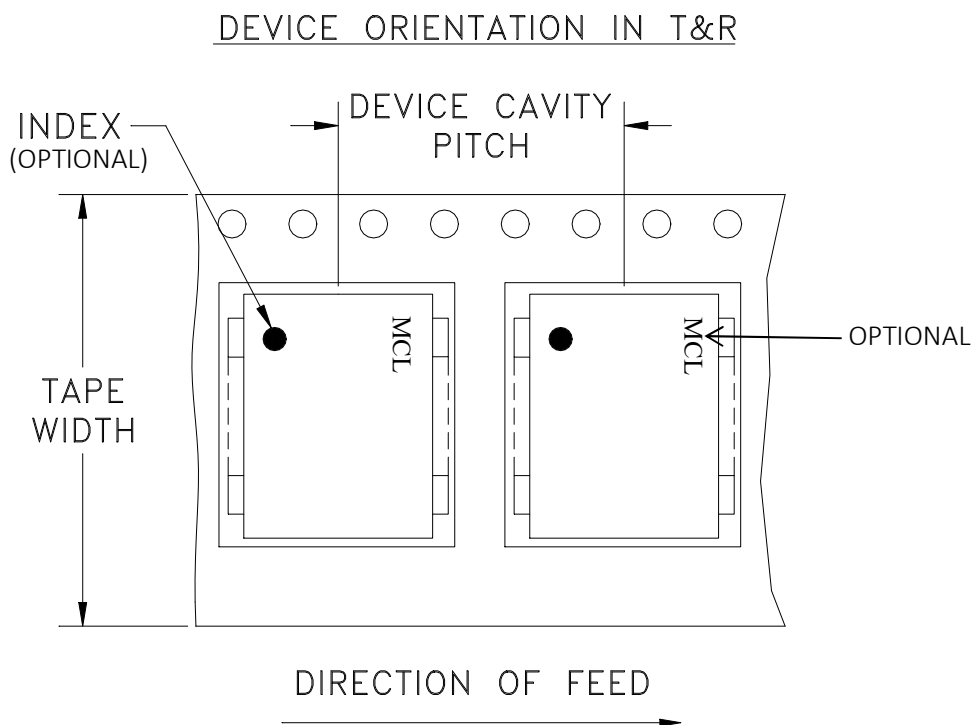
P.O. Box 350166, Brooklyn, New York 11235-0003 (718) 934-4500 Fax (718) 332-4661 For detailed performance specs & shopping online see Mini-Circuits web site



The Design Engineers Search Engine Provides ACTUAL Data Instantly From MINI-CIRCUITS At: www.minicircuits.com

RF/IF MICROWAVE COMPONENTS

Tape & Reel Packaging TR-F34



Tape Width, mm	Device Cavity Pitch, mm	Reel Size, inches	Devices per Reel see note	
16	12	7	Small quantity standard (see note)	20
				50
				100
				200
		13	Standard	500
				1000

Note: Availability of small reel quantity varies by model.
Refer to pricing and availability on individual model dashboard.

Mini-Circuits carrier tape materials provide protection from ESD (Electro-Static Discharge) during handling and transportation. Tapes are static dissipative and comply with industry standards EIA-481/EIA-541.

Go to: www.minicircuits.com/pages/pdfs/tape.pdf



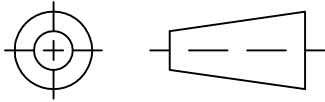
INTERNET <http://www.minicircuits.com>

P.O. Box 350166, Brooklyn, New York 11235-0003 (718) 934-4500 Fax (718) 332-4661

Distribution Centers NORTH AMERICA 800-654-7949 • 417-335-5935 • Fax 417-335-5945 • EUROPE 44-1252-832600 • Fax 44-1252-837010

Mini-Circuits ISO 9001 & ISO 14001 Certified

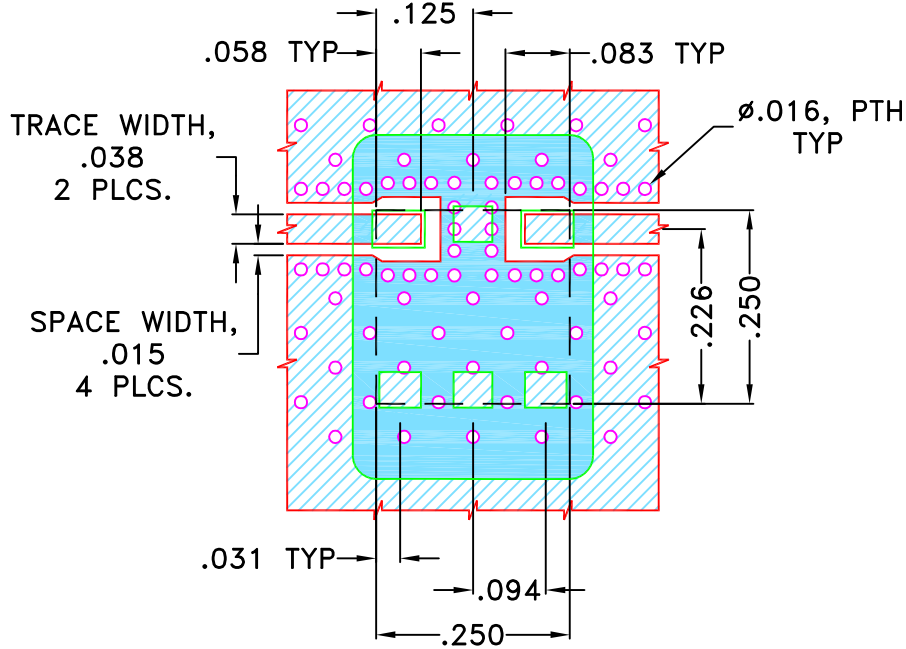
THIRD ANGLE PROJECTION



REVISIONS

REV	ECN No.	DESCRIPTION	DATE	DR	AUTH
OR	M156213	NEW RELEASE	MAY 16	TM	MD
A	M161508	COPPER LAND PATTERN UPDATED	APR 17	EJ	MD

SUGGESTED MOUNTING CONFIGURATION FOR QA2224 CASE STYLE "06FL09" PIN CODE



NOTES:

1. TRACE WIDTH IS SHOWN FOR ROGERS (R04350B) WITH DIELECTRIC THICKNESS .020"±.0015". COPPER: 1/2 OZ. EACH SIDE.
FOR OTHER MATERIALS TRACE WIDTH MAY NEED TO BE MODIFIED.
2. BOTTOM SIDE OF THE PCB IS CONTINUOUS GROUND PLANE.



DENOTES PCB COPPER LAYOUT WITH SMOBC (SOLDER MASK OVER BARE COPPER)



DENOTES COPPER LAND PATTERN FREE OF SOLDERMASK

UNLESS OTHERWISE SPECIFIED	INITIALS		DATE
DIMENSIONS ARE IN INCHES TOLERANCES ON: 2 PL DECIMALS ± 3 PL DECIMALS ± .005" ANGLES ± FRACTIONS ±	DRAWN	TM	02 MAY 16
	CHECKED	MD	02 MAY 16
	APPROVED	MD	02 MAY 16



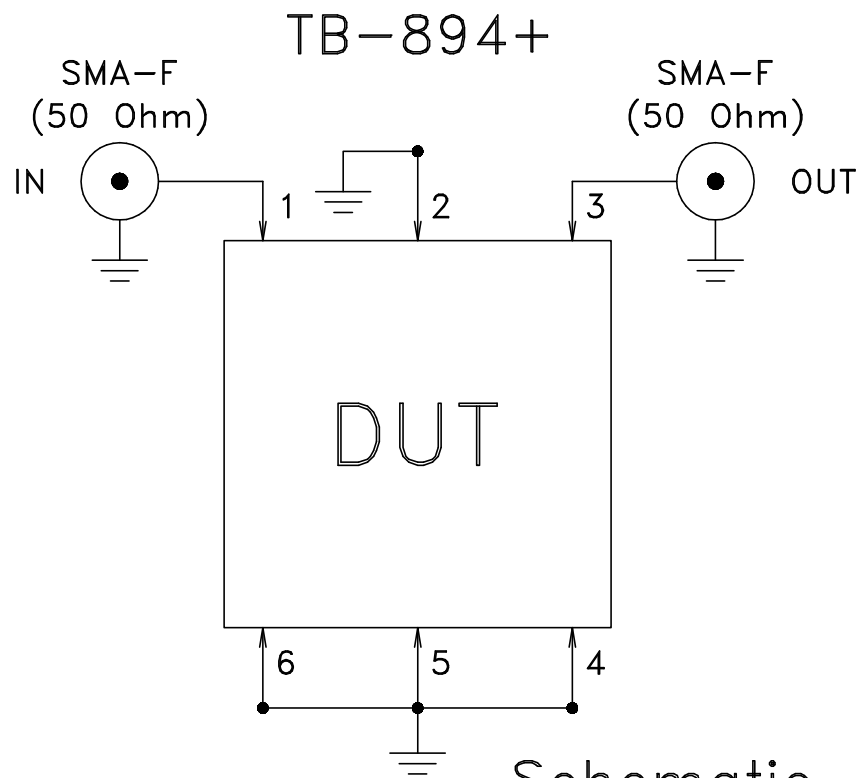
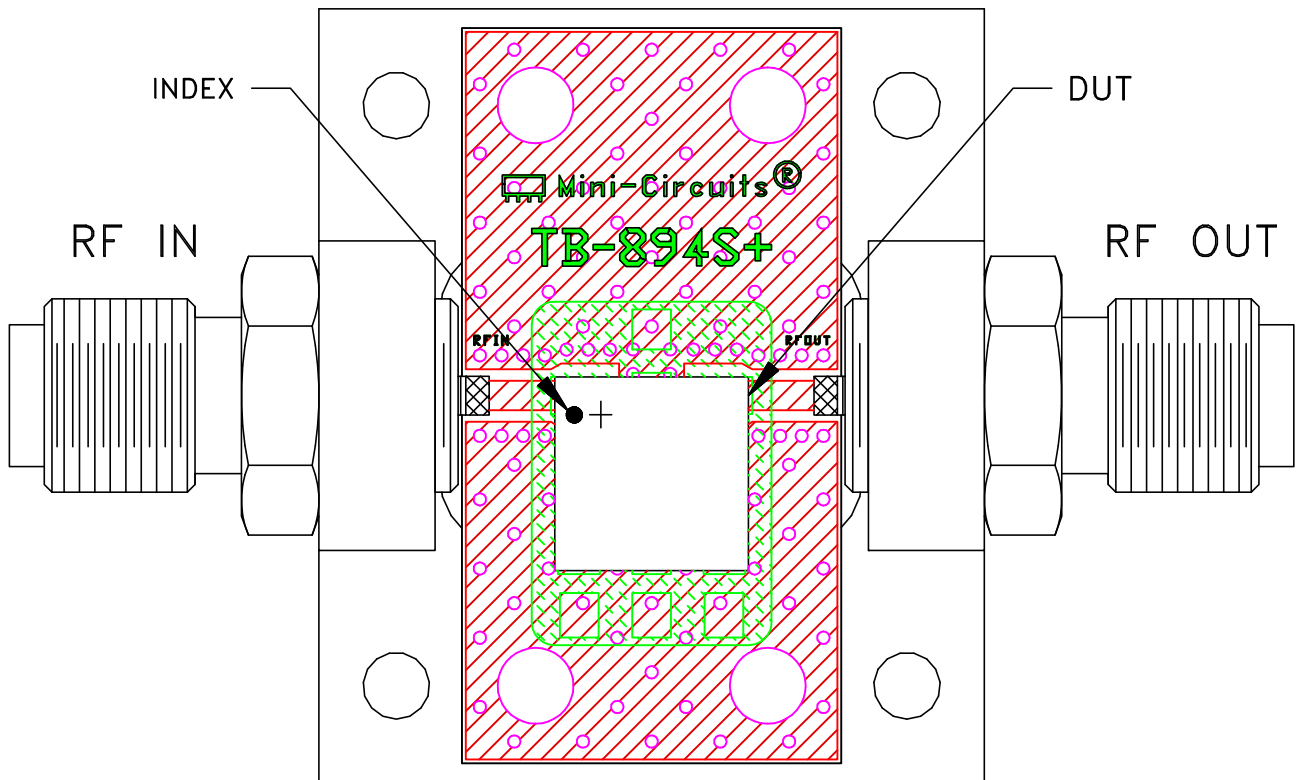
Mini-Circuits® 13 Neptune Avenue
Brooklyn NY 11235

PL, 06FL09, QA2224, ULP,
TB-894+, 50 Ohm

Mini-Circuits®
THIS DOCUMENT AND ITS CONTENTS ARE THE PROPERTY OF MINI-CIRCUITS. EXCEPT FOR USE EXPRESSLY GRANTED, IN WRITING, TO ITS VENDORS, VENDEE AND THE UNITED STATES GOVERNMENT, MINI-CIRCUITS RESERVES ALL PROPRIETARY DESIGN, USE, MANUFACTURING AND REPRODUCTION RIGHTS THERETO. THESE CONTENTS SHALL NOT BE USED, DUPLICATED OR DISCLOSED TO ANY OUTSIDE PARTY, IN WHOLE OR IN PART, WITHOUT WRITTEN PERMISSION OF MINI-CIRCUITS.

SIZE A	CODE IDENT 15542	DRAWING NO: 98-PL-484	REV: A
FILE: 98PL484	SCALE: 4:1	SHEET: 1 OF 1	


Evaluation Board and Circuit



Schematic Diagram

NOTES:

1. 50 Ohm SMA Female connectors.
2. PCB Material: ROGERS (RO4350B) OR Equivalent
Dielectric Constant=3.48±.05, Thickness=.020 inch.

 **Mini-Circuits®**

All Mini-Circuits products are manufactured under exacting quality assurance and control standards, and are capable of meeting published specifications after being subjected to any or all of the following physical and environmental test.

Specification	Test/Inspection Condition	Reference/Spec
Operating Temperature	-40° to 85° C Ambient Environment	Individual Model Data Sheet
Storage Temperature	-55° to 100° C Ambient Environment	Individual Model Data Sheet
HAST	130°C, 85% RH, 96 hours	JESD22-A110
Humidity	90 to 95% RH, 240 hours, 50°C	MIL-STD-202, Method 103, Condition A, Except 50°C and end-point electrical test done within 12 hours
Thermal Shock	-55° to 100°C, 100 cycles	MIL-STD-202, Method 107, Condition A-3, except +100°C
Solder Reflow Heat	Sn-Pb Eutectic Process: 225°C peak Pb-Free Process, 245°C peak	J-STD-020, Table 4-1, 4-2 and 5-2, Figure 5-1
Solderability	10X Magnification	J-STD-002, Para 4.2.5, Test S, 95% Coverage
Vibration (High Frequency)	20g peak, 20-2000 Hz, 4 times in each of three axes (total 12)	MIL-STD-883, Method 2007.3, Condition A
Mechanical Shock	50g, 11 ms, 1/2-sine, 18 shocks: 3 each direction, each of 3 axes	MIL-STD-202, Method 213, Condition A
Marking Resistance to Solvents	Isopropyl alcohol + mineral spirits at 25°C; terpene defluxer at 25°C; distilled water + proylene glycol monomethyl ether + monoethanolamine at 63°C to 70°C	MIL-STD-202, Method 215