

NEW!  
Two Section  
Models

# MMIC REFLECTIONLESS FILTERS DICE

50Ω DC to 26 GHz

## The Big Deal

- High Stopband rejection, up to 41 dB
- Patented design terminates stopband signals
- Pass band cut off up to 11 GHz
- Pass band up to 26 GHz
- Excellent repeatability through IPD\* process



## Product Overview

Mini-Circuits' **X-Series** of reflectionless filters now includes two-section models, giving you ultra-high rejection in the stopband – up to 41 dB! Reflectionless filters employ a patented filter topology which absorbs and terminates stopband signals internally rather than reflecting them back to the source. This new capability enables unique applications for filter circuits beyond those suited to traditional approaches. Traditional filters are reflective in the stopband, sending signals back to the source at 100% power. These reflections interact with neighboring components and often result in intermodulation and other interferences. By eliminating stopband reflections, reflectionless filters can readily be paired with sensitive devices and used in applications that otherwise require circuits such as isolation amplifiers or attenuators.

### Key Features

### Advantages

Easy integration with sensitive reflective components, e.g. mixers, multipliers	Reflectionless filters absorb unwanted signals, preventing reflections back to the source. This reduces generation of additional unwanted signals without the need for extra components like attenuators, improving system dynamic range and saving board space.
High stopband rejection, up to 41 dB	Ideal for applications where suppression of strong spurious signals and intermodulation products is needed.
Enables stable integration of wideband amplifiers	Because reflectionless filters maintain good impedance in the stopband; they can be integrated with high gain, wideband amplifiers without the risk of creating instabilities in these out of band regions.
Cascadable	Reflectionless filters can be cascaded in multiple sections to provide sharper and higher attenuation, while also preventing any standing waves that could affect passband signals. Low & highpass filters can be cascaded to realize bandpass filters.
Excellent power handling in a tiny surface mount device up to 1W in passband	High power handling extends the usability of these filters to the transmit path for inter-stage filtering.
Excellent repeatability of RF performance	Through semiconductor IPD process, X-series filters are inherently repeatable for large volume production.
Excellent stability over temperature	With $\pm 0.3$ dB variation over temperature ideal for use in wide temperature range applications without the need for additional temperature compensation.
Operating temperature up to 105°C	Suitable for operation close to high power components.
Unpackaged die	Enables the user to integrate the filter directly into hybrid.

\*IPD – Integrated Passive Device, is a GaAs semiconductor process



# Reflectionless High Pass Filter Die

## XHF-14M-D+

50Ω 9900 to 26000 MHz

### Features

- Match to 50Ω in the stop band, eliminates undesired reflections
- Cascadable
- Excellent stopband rejection, 41 dB typ.
- Temperature stable, up to 105°C
- Protected by US Patents 8,392,495; 9,705,467, additional patent pending
- Protected by China Patent 201080014266.1
- Protected by Taiwan Patent I581494



### Applications

- Fixed satellite
- Mobile
- Space research

#### +RoHS Compliant

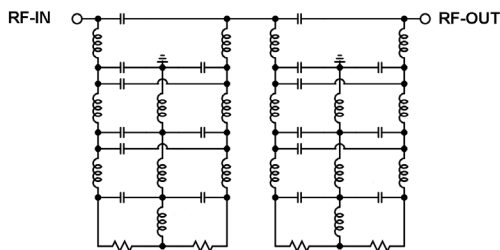
The +Suffix identifies RoHS Compliance. See our web site for RoHS Compliance methodologies and qualifications

Ordering Information: Refer to Last Page

### General Description

Mini-Circuits' XHF-14M-D+ two-section reflectionless filter Die employs a novel filter topology which absorbs and terminates stop band signals internally rather than reflecting them back to the source. This new capability enables unique applications for filter circuits beyond those suited to traditional approaches. Traditional filters are reflective in the stop band, sending signals back to the source at 100% of the power level. These reflections interact with neighboring components and often result in inter-modulation and other interferences. Reflectionless filters eliminate stop band reflections, allowing them to be paired with sensitive devices and used in applications that otherwise require circuits such as isolation amplifiers or attenuators.

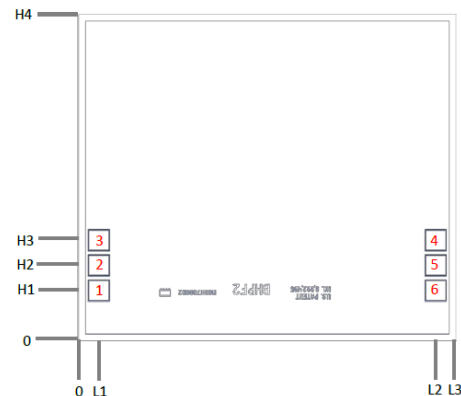
### Simplified Schematic and Pad description



Pad#	Description
2	RF-IN
5	RF-OUT
1,3,4,6	Ground
Die bottom	Ground

Note: 1. Bond Pad material - Gold  
2. Bottom of Die - Gold plated

### Bonding Pad Position



Dimensions in μm, Typical

L1	L2	L3	H1	H2	H3	H4	Thickness	Bond pad size
80	1420	1500	200	300	400	1300	100	78 x 78

Electrical Specifications<sup>1</sup> at 25°C

Parameter	F#	Frequency (MHz)	Min.	Typ.	Max.	Unit
Stop Band	Rejection	DC - F'	DC - 5000	41		dB
		F' - F1	5000 - 7000	32		
	Frequency Cut-off	F2	8800	3.3		
	VSWR	DC - F'	DC - 5000	1.1		:1
	F' - F1	5000 - 7000	1.4			
Pass Band	Insertion Loss	F3 - F4	9900 - 15000	1.2		dB
		F4 - F5	15000 - 26000	0.6		
	VSWR	F3 - F4	9900 - 15000	1.4		:1
		F4 - F5	15000 - 26000	1.2		

<sup>1</sup> Measured on die using MPI titan series 100µm pitch GSG probe.

Absolute Maximum Ratings<sup>4</sup>

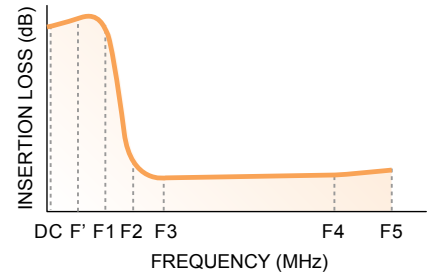
Parameter	Ratings
Operating Temperature	-55°C to +105°C
RF Power Input, Passband (F3-F5) <sup>2</sup>	1W at 25°C
RF Power Input, Stopband (DC-F3) <sup>3</sup>	1.25W at 25°C

<sup>2</sup> Passband rating derates linearly to 0.5W at 105°C ambient

<sup>3</sup> Stopband rating derates linearly to 0.63W at 105°C ambient

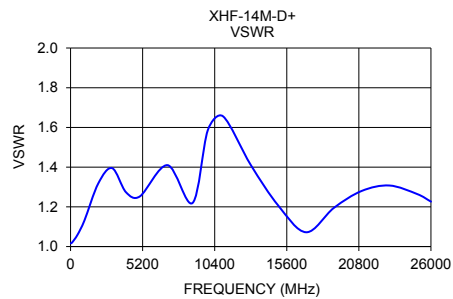
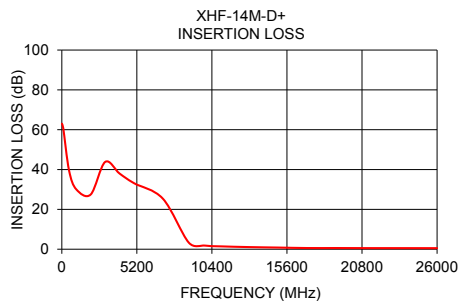
<sup>4</sup> Permanent damage may occur if any of these limits are exceeded.

SPECIFICATION DEFINITION

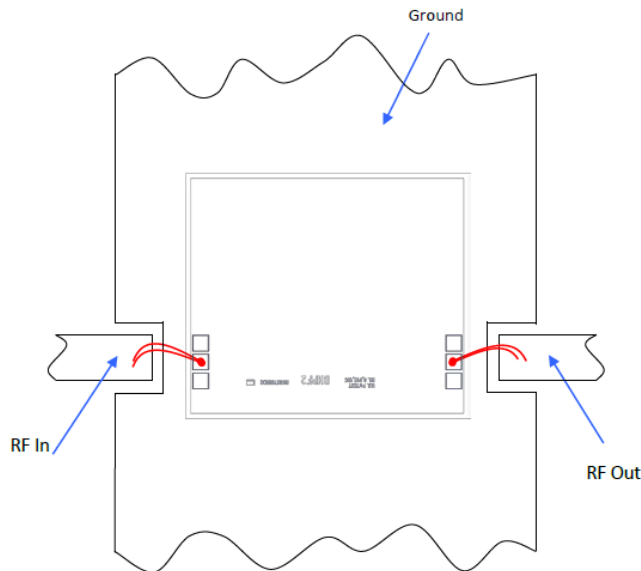


Typical Performance Data at 25°C

Frequency (MHz)	Insertion Loss (dB)	VSWR (:1)
10	63.02	1.02
100	60.77	1.02
500	39.57	1.06
1000	30.07	1.13
2000	27.46	1.32
3000	43.81	1.39
4000	38.00	1.27
5000	33.16	1.25
7000	25.38	1.41
8800	3.28	1.22
9900	1.83	1.59
11000	1.43	1.66
13000	1.06	1.41
15000	0.83	1.21
17000	0.59	1.07
19000	0.59	1.19
21000	0.55	1.28
23000	0.55	1.31
25000	0.53	1.26
26000	0.52	1.23



## Assembly Diagram



Note: Ground bond wires are optional.

## Assembly and Handling Procedure

- 1. Storage**  
Dice should be stored in a dry nitrogen purged desiccators or equivalent.
- 2. ESD**  
MMIC Gallium Arsenide (GaAs) filter dice are susceptible to electrostatic and mechanical damage. Die are supplied in antistatic protected material, which should be opened in clean room conditions at an appropriately grounded anti-static workstation. Devices need careful handling using correctly designed collets, vacuum pickup tips or sharp antistatic tweezers to deter ESD damage to dice.
- 3. Die Attach**  
The Die mounting surface must be clean and flat. Using conductive silver filled epoxy, recommended epoxies are DieMat DM6030Hk-PT/H579/H579 or Ablestik 84-1LMISR4. Apply sufficient epoxy to meet required epoxy bond line thickness, epoxy fillet height and epoxy coverage around total Die periphery. Parts shall be cured in a nitrogen filled atmosphere per manufacturer's cure condition. It is recommended to use antistatic Die pick up tools only.
- 4. Wire Bonding**  
Bond pad openings in the surface passivation above the bond pads are provided to allow wire bonding to the dice gold bond pads. Thermosonic bonding is used with minimized ultrasonic content. Bond force, time, ultrasonic power and temperature are all critical parameters. Suggested wire is pure gold, 1 mil diameter. Bonds must be made from the bond pads on the Die to the package or substrate. All bond wires should be kept as short as low as reasonable to minimize performance degradation due to undesirable series inductance.



# MMIC Reflectionless High Pass Filter Die

# XHF-14M-D+

## Typical Performance Data

Test Condition @ Temperature = +25°C

FREQ. (MHz)	INSERTION LOSS (dB)	INPUT RETURN LOSS (dB)	OUTPUT RETURN LOSS (dB)
10	63.02	59.92	41.79
100	60.77	45.33	40.30
200	53.06	39.31	37.46
300	47.32	35.62	34.84
400	42.97	33.04	32.66
500	39.57	30.96	30.83
600	36.85	29.24	29.25
700	34.64	27.77	27.87
800	32.81	26.47	26.62
900	31.32	25.30	25.48
1000	30.07	24.21	24.46
1500	26.84	19.96	20.33
2000	27.46	17.25	17.71
2500	32.13	15.92	16.44
3000	43.81	15.65	16.28
3500	61.72	16.47	17.19
4000	38.00	18.39	19.21
4500	32.01	20.24	20.89
5000	33.16	19.00	19.27
5500	40.57	16.15	16.48
6000	33.83	14.30	14.77
6500	24.57	14.00	14.57
7000	25.38	15.39	16.18
7500	33.52	23.68	23.74
8000	10.82	16.21	16.21
8800	3.28	20.10	20.70
9000	2.77	18.07	18.31
9900	1.83	12.90	12.97
10000	1.78	12.68	12.76
10500	1.58	12.13	12.25
11000	1.43	12.15	12.30
11500	1.32	12.52	12.73
12000	1.21	13.23	13.48
12500	1.13	14.15	14.46
13000	1.06	15.37	15.73
13500	1.00	16.77	17.29
14000	0.96	18.02	18.81
14500	0.92	19.16	20.19
15000	0.83	20.63	21.96
15500	0.72	22.94	25.00
16000	0.65	25.86	29.38
16500	0.61	28.51	34.27
17000	0.59	29.17	32.73
17500	0.59	27.29	28.30
18000	0.60	25.02	25.04
18500	0.60	23.04	22.83
19000	0.59	21.52	21.03
19500	0.57	20.46	19.95
20000	0.55	19.54	19.15
20500	0.55	18.87	18.60
21000	0.55	18.41	18.22
21500	0.55	18.07	17.84
22000	0.55	17.86	17.65
22500	0.55	17.76	17.54
23000	0.55	17.77	17.51
23500	0.55	17.76	17.55
24000	0.54	17.98	17.77
24500	0.54	18.34	18.20
25000	0.53	18.83	18.65
25500	0.52	19.28	19.30
26000	0.52	19.85	20.02



ISO 9001 ISO 14001 AS 9100 CERTIFIED



P.O. Box 350166, Brooklyn, New York 11235-0003 (718) 934-4500 • Fax (718) 332-4661 For detailed performance specs & shopping online see Mini-Circuits web site

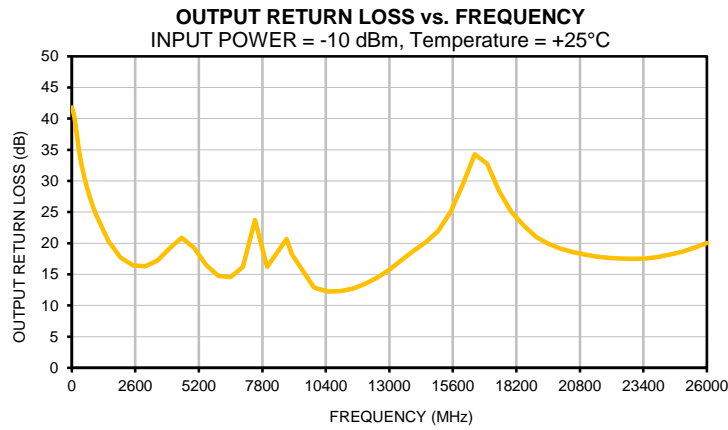
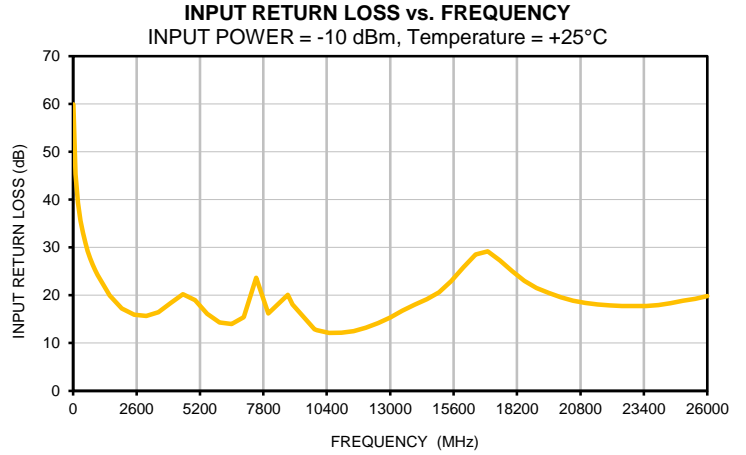
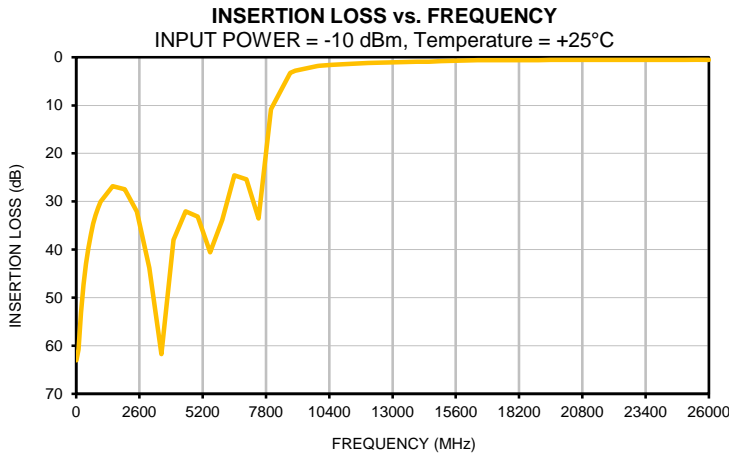


The Design Engineers Search Engine Provides ACTUAL Data Instantly From MINI-CIRCUITS At: [www.minicircuits.com](http://www.minicircuits.com)

IF/RF MICROWAVE COMPONENTS

REV. OR  
XHF-14M-D+  
8/21/2018  
Page 1 of 1

## Typical Performance Curves



All Mini-Circuits products are manufactured under exacting quality assurance and control standards, and are capable of meeting published specifications after being subjected to any or all of the following physical and environmental test.

<b>Specification</b>	<b>Test/Inspection Condition</b>	<b>Reference/Spec</b>
Operating Temperature	-40° to 85° C or -40° to 105° C or -55° to 105° C or -45° to 105° C Ambient Environment	Refer to Individual Model Data Sheet
Storage Environment (Die)	-65° to 150°C	Individual Model Data Sheet
Storage Environment(Packaging)	-40° to 70°C and 40 to 60% humidity (In Factory Shipped Package)	