

DC Pass, High Power

Power Splitter/Combiner

ZC8PD-K0644+

8 Way-0° 50Ω 6000 to 40000 MHz

The Big Deal

- Ultra wideband, 6 to 40 GHz
- Low insertion loss, 2.0 dB typ.
- High Isolation, 28 dB typ.
- 20W power handling
- Low amplitude unbalance, 0.12 dB typ.



CASE STYLE: UU2415-4

Product Overview

Mini-Circuits' ZC8PD-K0644+ is a super wideband 8-way 0° splitter/combiner providing coverage from 6 to 40 GHz, supporting a wide range of applications including 5G, KU-band, K-band & Ka-band, instrumentation and many more. This model provides 20W power handling as a splitter and very low insertion loss across the entire operating frequency range, minimizing power dissipation and delivering excellent signal power transmission from input to output. The ZC8PD-K0644+ comes housed in a case measuring 1.93 x 4.09 x 0.5" with 2.92mm female connectors.

Key Features

Feature	Advantages
Ultra-wideband, 6 to 40 GHz	Extremely wide frequency range supports many broadband applications in a single model.
Low insertion loss, 2.0 dB typ.	The combination of 20W power handling and low insertion loss makes this model a suitable candidate for distributing signals while maintaining excellent transmission of signal power.
High isolation, 28 dB typ.	Minimizes interference between ports.
High power handling: <ul style="list-style-type: none">• 20W as a splitter at 25°C• 3.2W as a combiner	The ZC8PD-K0644+ is suitable for systems with a wide range of power requirements.
Low amplitude unbalance, 0.12 dB	Produces nearly equal output signals, ideal for parallel path and multichannel systems.
DC Passing, 405mA	Supports applications where DC power is needed through the RF line.

Notes

- A. Performance and quality attributes and conditions not expressly stated in this specification document are intended to be excluded and do not form a part of this specification document.
B. Electrical specifications and performance data contained in this specification document are based on Mini-Circuit's applicable established test performance criteria and measurement instructions.
C. The parts covered by this specification document are subject to Mini-Circuits standard limited warranty and terms and conditions (collectively, "Standard Terms"); Purchasers of this part are entitled to the rights and benefits contained therein. For a full statement of the Standard Terms and the exclusive rights and remedies thereunder, please visit Mini-Circuits' website at www.minicircuits.com/MCLStore/terms.jsp



DC Pass, High Power Power Splitter/Combiner

ZC8PD-K0644+

8 Way-0° 50Ω 6000 to 40000 MHz

Maximum Ratings

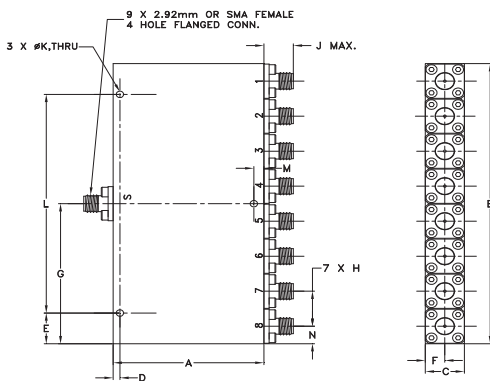
Operating Temperature	-55°C to 100°C
Storage Temperature	-55°C to 100°C
Power Input (as a splitter)	20W* max.
Internal Dissipation	3.2W max.
DC Current	405 mA

Permanent damage may occur if any of these limits are exceeded.
* Derate linearly to 8.2W at 100°C

Coaxial Connections

Sum Port	S
Port 1,2,3,4,5,6,7,8	1,2,3,4,5,6,7,8

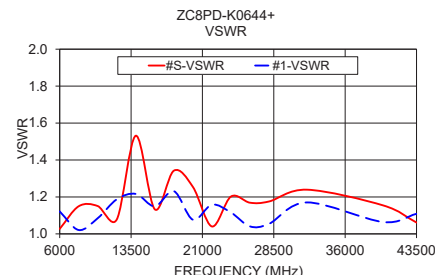
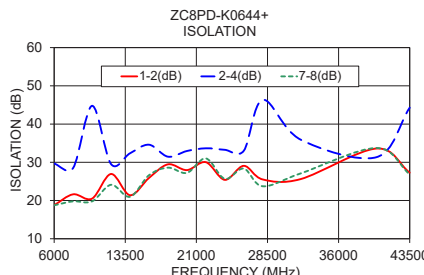
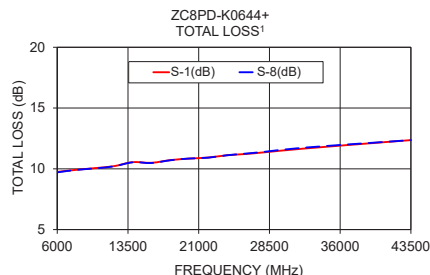
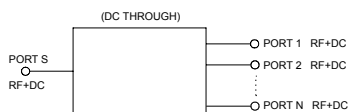
Outline Drawing



Outline Dimensions (inch/mm)

A	B	C	D	E	F	G
1.93	4.09	.50	0.087	.449	.25	2.05
49.02	103.89	12.70	2.21	11.40	6.35	52.07
H	J	K	L	M	N	wt
.51	.43	.094	3.197	.130	.26	grams
12.95	10.92	2.39	81.20	3.30	6.60	230

Electrical Schematic



Notes

- Performance and quality attributes and conditions not expressly stated in this specification document are intended to be excluded and do not form a part of this specification document.
- Electrical specifications and performance data contained in this specification document are based on Mini-Circuit's applicable established test performance criteria and measurement instructions.
- The parts covered by this specification document are subject to Mini-Circuit's standard limited warranty and terms and conditions (collectively, "Standard Terms"); Purchasers of this part are entitled to the rights and benefits contained therein. For a full statement of the Standard Terms and the exclusive rights and remedies thereunder, please visit Mini-Circuit's website at www.minicircuits.com/MCLStore/terms.jsp



www.minicircuits.com P.O. Box 350166, Brooklyn, NY 11235-0003 (718) 934-4500 sales@minicircuits.com

Features

- Super wideband, 6000 - 40000 MHz
- Low insertion loss, 2.0 dB typ.
- Low amplitude unbalance, 0.12 dB typ.
- Excellent VSWR, 1.12:1 typ.
- High isolation, 28 dB typ.

Applications

- Fixed satellite
- 5G
- Mobile
- Space research



Generic photo used for illustration purposes only

CASE STYLE: UU2415-4

Connectors Model
2.92mm-Fem ZC8PD-K0644+

+RoHS Compliant
The +Suffix identifies RoHS Compliance. See our web site for RoHS Compliance methodologies and qualifications

Electrical Specifications at 25°C

Parameter	Frequency (MHz)	Min.	Typ.	Max.	Unit
Frequency Range		6000		40000	MHz
Insertion Loss Above 9.0 dB	6000-18000		1.3	2.2	
	18000-26500		2.0	2.8	dB
	26500-40000		2.8	3.6	
Phase Unbalance	6000-18000		1.3	8	Degree
	18000-26500		2.2	11	
	26500-40000		3.4	16	
Amplitude Unbalance	6000-18000		0.11	0.5	dB
	18000-26500		0.12	0.7	
	26500-40000		0.16	0.8	
Isolation	6000-18000	15	26		dB
	18000-26500	18	28		
	26500-40000	18	30		
VSWR (Port S)	6000-18000		1.11	1.6	:1
	18000-26500		1.12	1.6	
	26500-40000		1.1	1.7	
VSWR (Port 1-8)	6000-18000		1.17	1.7	:1
	18000-26500		1.16	1.6	
	26500-40000		1.15	1.6	

Typical Performance Data

Freq. (MHz)	Total Loss ¹ (dB)						Amp. Unbal. (dB)	Isolation (dB)				Phase Unbal. (deg.)	VSWR S	VSWR 1	VSWR 8
	S-1	S-2	S-3	S-4	S-6	S-8		1-2	2-4	5-7	7-8				
6000	9.74	9.77	9.74	9.73	9.81	9.71	0.10	18.78	29.67	30.29	18.75	1.43	1.03	1.12	1.17
8000	9.92	9.93	9.89	9.87	10.00	9.91	0.13	21.62	28.51	28.92	19.79	1.78	1.15	1.02	1.06
10000	10.06	10.07	10.05	10.06	10.13	10.04	0.09	20.51	44.77	37.38	19.78	1.89	1.15	1.09	1.08
12000	10.21	10.22	10.15	10.17	10.24	10.20	0.08	26.94	29.53	28.37	24.12	2.11	1.08	1.19	1.24
14000	10.55	10.55	10.55	10.52	10.51	10.53	0.08	21.39	32.35	31.53	20.97	2.51	1.53	1.22	1.21
16000	10.50	10.50	10.43	10.43	10.47	10.48	0.08	25.91	34.60	33.75	26.62	3.12	1.13	1.15	1.15
18000	10.71	10.71	10.67	10.67	10.68	10.71	0.06	29.46	31.47	31.33	28.60	3.64	1.34	1.23	1.23
20000	10.84	10.84	10.80	10.76	10.80	10.85	0.09	27.96	32.95	33.15	27.23	4.10	1.25	1.08	1.06
22000	10.93	10.92	10.89	10.86	10.87	10.92	0.08	30.03	33.66	32.19	31.01	4.58	1.04	1.16	1.19
24000	11.12	11.10	11.03	11.01	11.04	11.12	0.11	25.41	33.26	32.48	25.67	5.40	1.20	1.12	1.13
26000	11.22	11.21	11.19	11.12	11.13	11.25	0.13	29.07	33.02	32.32	28.35	5.66	1.17	1.04	1.06
28000	11.36	11.35	11.32	11.28	11.30	11.40	0.15	25.51	46.33	54.03	23.73	6.36	1.18	1.05	1.02
32000	11.65	11.63	11.64	11.57	11.60	11.73	0.17	25.61	35.92	35.68	27.09	7.38	1.24	1.17	1.19
40000	12.15	12.13	12.11	12.07	12.21	12.17	0.14	33.60	31.34	32.22	33.74	9.77	1.15	1.06	1.03
43500	12.36	12.31	12.29	12.25	12.40	12.36	0.15	27.29	44.30	41.42	26.85	10.18	1.06	1.11	1.07

1. Total Loss = Insertion Loss + 9dB splitter loss.

8 Way-0° Power Splitter/Combiner

ZC8PD-K0644+

Typical Performance Data

Data tested at 25DegC

FREQ. (MHz)	TOTAL LOSS ¹ (dB)						AMP. UNBAL. (dB)	ISOLATION (dB)				PHASE UNBAL. (deg.)	FREQ. (MHz)	VSWR (:1)		
	S-1	S-2	S-3	S-4	S-6	S-8		1-2	2-4	5-7	7-8			S	1	8
500	9.25	9.31	9.29	9.27	9.27	9.28	0.09	3.04	11.95	11.86	3.07	0.57	500	1.25	1.55	1.51
1000	9.52	9.55	9.52	9.50	9.56	9.48	0.08	5.36	14.85	14.60	5.63	0.41	1000	1.59	1.35	1.25
2000	9.79	9.83	9.76	9.71	9.75	9.68	0.15	11.45	17.38	19.14	10.25	0.64	2000	1.66	1.20	1.08
3000	10.04	10.07	10.02	9.99	10.07	10.03	0.08	11.85	21.30	22.79	10.70	1.01	3000	2.03	1.12	1.11
4000	9.69	9.73	9.69	9.67	9.81	9.71	0.14	16.96	20.89	21.65	16.66	0.97	4000	1.44	1.39	1.48
5000	9.67	9.69	9.65	9.63	9.74	9.62	0.12	17.30	21.38	21.49	16.77	0.96	5000	1.09	1.33	1.33
6000	9.74	9.77	9.74	9.73	9.81	9.71	0.10	18.78	29.67	30.29	18.75	1.43	6000	1.03	1.12	1.17
7000	9.87	9.88	9.85	9.82	9.93	9.85	0.10	29.80	47.52	38.65	30.25	1.44	7000	1.15	1.25	1.32
8000	9.92	9.93	9.89	9.87	10.00	9.91	0.13	21.62	28.51	28.92	19.79	1.78	8000	1.15	1.02	1.06
9000	10.00	10.01	9.98	9.93	10.06	9.96	0.13	28.05	27.85	26.01	28.30	1.59	9000	1.12	1.16	1.18
10000	10.06	10.07	10.05	10.06	10.13	10.04	0.09	20.51	44.77	37.38	19.78	1.89	10000	1.15	1.09	1.08
11000	10.31	10.32	10.27	10.25	10.34	10.29	0.09	32.55	33.79	32.20	37.64	1.88	11000	1.40	1.36	1.40
12000	10.21	10.22	10.15	10.17	10.24	10.20	0.08	26.94	29.53	28.37	24.12	2.11	12000	1.08	1.19	1.24
13000	10.32	10.33	10.27	10.24	10.33	10.32	0.09	26.54	32.20	31.95	25.51	2.29	13000	1.22	1.16	1.18
14000	10.55	10.55	10.55	10.52	10.51	10.53	0.08	21.39	32.35	31.53	20.97	2.51	14000	1.53	1.22	1.21
15000	10.43	10.43	10.42	10.36	10.38	10.40	0.09	28.82	28.47	27.31	28.37	2.88	15000	1.10	1.11	1.07
16000	10.50	10.50	10.43	10.43	10.47	10.48	0.08	25.91	34.60	33.75	26.62	3.12	16000	1.13	1.15	1.15
17000	10.61	10.61	10.53	10.53	10.56	10.58	0.08	24.41	40.78	38.34	23.49	3.30	17000	1.20	1.13	1.14
18000	10.71	10.71	10.67	10.67	10.68	10.71	0.06	29.46	31.47	31.33	28.60	3.64	18000	1.34	1.23	1.23
19000	10.71	10.72	10.68	10.64	10.66	10.68	0.07	25.11	31.89	32.28	24.51	3.81	19000	1.07	1.12	1.12
20000	10.84	10.84	10.80	10.76	10.80	10.85	0.09	27.96	32.95	33.15	27.23	4.10	20000	1.25	1.08	1.06
21000	10.88	10.88	10.85	10.83	10.82	10.89	0.07	28.13	37.80	37.31	25.70	4.33	21000	1.25	1.08	1.08
22000	10.93	10.92	10.89	10.86	10.87	10.92	0.08	30.03	33.66	32.19	31.01	4.58	22000	1.04	1.16	1.19
23000	11.07	11.05	10.99	11.01	10.98	11.03	0.11	34.22	29.85	30.08	32.68	4.85	23000	1.26	1.21	1.21
24000	11.12	11.10	11.03	11.01	11.04	11.12	0.11	25.41	33.26	32.48	25.67	5.40	24000	1.20	1.12	1.13
25000	11.11	11.10	11.06	11.04	11.04	11.16	0.12	36.60	35.12	34.79	40.37	5.44	25000	1.08	1.13	1.17
26000	11.22	11.21	11.19	11.12	11.13	11.25	0.13	29.07	33.02	32.32	28.35	5.66	26000	1.17	1.04	1.06
27000	11.28	11.27	11.25	11.21	11.26	11.34	0.13	33.92	34.52	33.79	32.40	5.98	27000	1.23	1.07	1.07
28000	11.36	11.35	11.32	11.28	11.30	11.40	0.15	25.51	46.33	54.03	23.73	6.36	28000	1.18	1.05	1.02
29000	11.45	11.43	11.39	11.37	11.40	11.51	0.15	32.19	38.45	35.71	33.97	6.35	29000	1.21	1.27	1.25
30000	11.53	11.52	11.45	11.42	11.42	11.57	0.17	34.30	34.02	34.61	31.00	6.62	30000	1.22	1.24	1.24
31000	11.56	11.55	11.49	11.44	11.49	11.62	0.18	24.54	43.20	55.89	25.02	7.19	31000	1.18	1.11	1.10
32000	11.65	11.63	11.64	11.57	11.60	11.73	0.17	25.61	35.92	35.68	27.09	7.38	32000	1.24	1.17	1.19
33000	11.70	11.68	11.66	11.58	11.62	11.73	0.15	27.37	34.03	34.41	26.77	7.53	33000	1.12	1.01	1.07
35000	11.86	11.84	11.81	11.79	11.82	11.90	0.12	23.91	41.98	37.65	24.12	8.28	35000	1.31	1.09	1.12
37000	11.97	11.92	11.88	11.85	11.93	11.98	0.14	24.75	31.45	31.41	26.20	8.66	37000	1.13	1.17	1.20
40000	12.15	12.13	12.11	12.07	12.21	12.17	0.14	33.60	31.34	32.22	33.74	9.77	40000	1.15	1.06	1.03
43500	12.36	12.31	12.29	12.25	12.40	12.36	0.15	27.29	44.30	41.42	26.85	10.18	43500	1.06	1.11	1.07

¹Total Loss = Insertion Loss + 9dB Splitter Loss



P.O. Box 350166, Brooklyn, New York 11235-0003 (718) 934-4500 • Fax (718) 332-4661 For detailed performance specs & shopping online see Mini-Circuits web site



The Design Engineers Search Engine Provides ACTUAL Data Instantly From MINI-CIRCUITS At: www.minicircuits.com

IF/RF MICROWAVE COMPONENTS

REV. OR
ZC8PD-K0644+
6/7/2019
Page 1 of 3

8 Way-0° Power Splitter/Combiner

ZC8PD-K0644+

Typical Performance Data

Data tested at -55DegC

FREQ. (MHz)	TOTAL LOSS ¹ (dB)						AMP. UNBAL. (dB)	ISOLATION (dB)				PHASE UNBAL. (deg.)	FREQ. (MHz)	VSWR (:1)		
	S-1	S-2	S-3	S-4	S-6	S-8		1-2	2-4	5-7	7-8			S	1	8
500	9.26	9.29	9.24	9.27	9.27	9.26	0.05	3.04	11.92	11.83	3.10	0.39	500	1.24	1.55	1.51
1000	9.56	9.57	9.58	9.53	9.52	9.55	0.06	5.36	14.84	14.60	5.66	0.30	1000	1.64	1.33	1.24
2000	9.79	9.78	9.75	9.73	9.66	9.69	0.14	11.36	17.47	19.31	10.30	0.64	2000	1.67	1.18	1.07
3000	10.06	10.06	10.01	10.01	10.02	10.09	0.08	11.94	21.27	22.85	10.84	0.55	3000	2.06	1.10	1.11
4000	9.67	9.67	9.66	9.68	9.67	9.73	0.07	16.77	21.08	21.91	16.58	0.72	4000	1.42	1.38	1.45
5000	9.64	9.65	9.63	9.65	9.61	9.67	0.06	17.23	21.41	21.58	16.80	1.15	5000	1.10	1.34	1.34
6000	9.74	9.73	9.71	9.70	9.68	9.74	0.06	18.82	29.46	30.12	18.83	1.38	6000	1.02	1.13	1.16
7000	9.83	9.85	9.84	9.82	9.79	9.86	0.07	30.44	44.16	37.39	32.36	1.66	7000	1.18	1.26	1.32
8000	9.89	9.89	9.87	9.86	9.85	9.92	0.07	21.22	29.15	29.79	19.39	2.16	8000	1.17	1.01	1.04
9000	9.95	9.97	9.94	9.90	9.92	9.95	0.07	27.79	27.87	26.07	27.98	2.01	9000	1.11	1.14	1.16
10000	10.01	10.00	10.00	10.01	9.98	10.03	0.05	20.70	42.09	36.20	20.01	2.33	10000	1.15	1.09	1.10
11000	10.28	10.28	10.23	10.22	10.21	10.29	0.08	33.02	34.55	33.27	33.17	2.37	11000	1.43	1.36	1.40
12000	10.18	10.16	10.11	10.12	10.10	10.18	0.09	26.41	30.07	28.86	23.80	2.95	12000	1.09	1.19	1.24
13000	10.26	10.22	10.19	10.16	10.17	10.27	0.10	26.07	32.12	31.83	24.80	3.04	13000	1.17	1.16	1.16
14000	10.56	10.50	10.50	10.48	10.41	10.52	0.16	22.18	33.79	33.01	21.71	3.32	14000	1.57	1.24	1.23
15000	10.41	10.33	10.33	10.29	10.25	10.37	0.16	26.80	28.83	27.71	26.65	3.58	15000	1.10	1.09	1.06
16000	10.50	10.40	10.37	10.33	10.35	10.43	0.17	26.51	34.85	33.97	27.45	3.83	16000	1.11	1.15	1.14
17000	10.62	10.49	10.44	10.42	10.44	10.52	0.20	24.20	42.10	40.68	23.20	3.81	17000	1.15	1.12	1.13
18000	10.77	10.62	10.60	10.59	10.59	10.67	0.20	32.48	32.73	32.66	31.63	4.11	18000	1.34	1.21	1.21
19000	10.75	10.61	10.58	10.55	10.54	10.62	0.22	24.78	32.68	32.82	24.49	4.41	19000	1.10	1.10	1.10
20000	10.82	10.74	10.68	10.62	10.65	10.76	0.20	28.29	33.09	33.28	27.03	4.54	20000	1.16	1.06	1.06
21000	10.87	10.79	10.80	10.72	10.71	10.83	0.17	29.11	38.84	38.58	26.61	4.61	21000	1.29	1.05	1.05
22000	10.87	10.81	10.80	10.75	10.73	10.86	0.16	29.58	34.72	33.15	30.38	4.81	22000	1.06	1.15	1.19
23000	10.99	10.90	10.86	10.86	10.82	10.95	0.18	32.02	29.89	30.11	31.22	5.35	23000	1.16	1.17	1.20
24000	11.06	10.99	10.94	10.90	10.93	11.06	0.16	26.46	32.30	31.41	26.87	5.28	24000	1.25	1.10	1.14
25000	11.02	10.99	10.96	10.92	10.91	11.07	0.17	34.98	34.88	34.54	37.70	5.71	25000	1.13	1.11	1.15
26000	11.06	11.03	11.05	10.98	10.95	11.12	0.17	29.01	32.70	32.07	28.65	5.94	26000	1.07	1.02	1.05
27000	11.14	11.10	11.10	11.07	11.08	11.23	0.17	31.52	32.77	32.11	29.91	6.09	27000	1.23	1.06	1.05
28000	11.22	11.16	11.13	11.14	11.14	11.31	0.20	26.45	42.10	42.58	24.51	6.32	28000	1.20	1.12	1.08
29000	11.29	11.22	11.19	11.21	11.20	11.40	0.22	29.45	40.96	37.76	30.70	6.42	29000	1.13	1.23	1.23
30000	11.35	11.29	11.24	11.26	11.23	11.45	0.22	36.72	33.40	33.58	34.14	7.05	30000	1.19	1.20	1.23
31000	11.38	11.33	11.29	11.28	11.30	11.49	0.20	24.08	37.10	41.08	24.15	7.12	31000	1.14	1.07	1.08
32000	11.46	11.43	11.44	11.40	11.40	11.59	0.20	28.36	40.36	39.63	30.31	7.27	32000	1.19	1.16	1.17
33000	11.48	11.46	11.46	11.41	11.41	11.59	0.21	26.11	34.71	34.91	26.03	7.45	33000	1.17	1.01	1.06
35000	11.64	11.61	11.59	11.58	11.61	11.76	0.19	23.90	51.42	45.66	24.05	7.84	35000	1.25	1.06	1.06
37000	11.72	11.70	11.69	11.65	11.68	11.81	0.16	24.49	32.04	32.03	26.04	8.29	37000	1.14	1.18	1.20
40000	11.88	11.88	11.88	11.86	11.91	12.03	0.18	29.60	32.59	33.79	28.86	8.81	40000	1.17	1.03	1.05
43500	12.08	12.04	12.02	12.02	12.10	12.21	0.18	26.90	38.94	36.67	26.68	9.65	43500	1.11	1.10	1.09

¹Total Loss = Insertion Loss + 9dB Splitter Loss



P.O. Box 350166, Brooklyn, New York 11235-0003 (718) 934-4500 • Fax (718) 332-4661 For detailed performance specs & shopping online see Mini-Circuits web site



The Design Engineers Search Engine Provides ACTUAL Data Instantly From MINI-CIRCUITS At: www.minicircuits.com

IF/RF MICROWAVE COMPONENTS

REV. OR
ZC8PD-K0644+
6/7/2019
Page 2 of 3

8 Way-0° Power Splitter/Combiner

ZC8PD-K0644+

Typical Performance Data

Data tested at 100DegC

FREQ. (MHz)	TOTAL LOSS ¹ (dB)						AMP. UNBAL. (dB)	ISOLATION (dB)				PHASE UNBAL. (deg.)	FREQ. (MHz)	VSWR (:1)		
	S-1	S-2	S-3	S-4	S-6	S-8		1-2	2-4	5-7	7-8			S	1	8
500	9.27	9.26	9.33	9.25	9.25	9.25	0.08	2.95	11.89	11.86	3.02	0.52	500	1.25	1.57	1.53
1000	9.54	9.55	9.49	9.51	9.52	9.52	0.05	5.18	14.74	14.64	5.48	0.79	1000	1.57	1.39	1.28
2000	9.85	9.90	9.79	9.73	9.71	9.72	0.19	11.65	18.06	19.03	10.73	1.19	2000	1.66	1.24	1.10
3000	10.09	10.09	10.04	9.97	10.00	10.05	0.12	12.50	21.87	22.89	11.18	0.40	3000	2.01	1.12	1.10
4000	9.79	9.70	9.74	9.70	9.72	9.74	0.09	17.40	21.02	21.63	16.78	1.57	4000	1.45	1.37	1.44
5000	9.75	9.74	9.71	9.65	9.66	9.68	0.10	17.22	21.39	21.67	16.77	1.79	5000	1.08	1.32	1.31
6000	9.83	9.82	9.81	9.75	9.74	9.76	0.09	19.37	31.19	31.46	19.55	1.86	6000	1.03	1.12	1.15
7000	9.96	9.92	9.91	9.85	9.86	9.90	0.11	29.51	46.92	40.01	30.98	2.46	7000	1.14	1.19	1.28
8000	10.01	9.98	9.95	9.92	9.93	9.95	0.10	21.87	29.17	29.27	20.17	2.70	8000	1.13	1.02	1.06
9000	10.11	10.04	10.06	9.98	10.00	10.01	0.13	28.18	28.20	26.51	29.07	3.16	9000	1.12	1.17	1.18
10000	10.17	10.16	10.13	10.09	10.09	10.11	0.08	20.33	50.14	39.42	19.82	3.42	10000	1.15	1.09	1.07
11000	10.41	10.37	10.33	10.28	10.31	10.34	0.13	32.27	34.39	32.82	36.46	3.91	11000	1.36	1.32	1.37
12000	10.33	10.30	10.24	10.23	10.24	10.28	0.09	28.14	30.48	29.05	24.89	4.29	12000	1.08	1.16	1.23
13000	10.46	10.40	10.38	10.32	10.34	10.39	0.13	26.36	32.72	32.51	25.59	4.58	13000	1.24	1.17	1.18
14000	10.65	10.70	10.61	10.56	10.52	10.59	0.18	21.54	32.71	31.80	21.14	4.72	14000	1.49	1.21	1.20
15000	10.57	10.55	10.51	10.44	10.43	10.48	0.14	29.60	28.86	27.46	28.88	5.16	15000	1.10	1.11	1.07
16000	10.64	10.60	10.55	10.51	10.53	10.57	0.13	26.20	35.12	33.77	27.43	5.45	16000	1.13	1.14	1.15
17000	10.76	10.72	10.65	10.60	10.64	10.68	0.16	25.29	39.93	37.02	23.97	5.82	17000	1.21	1.13	1.14
18000	10.84	10.87	10.76	10.74	10.74	10.79	0.14	28.77	30.92	30.47	27.90	6.09	18000	1.31	1.23	1.22
19000	10.85	10.88	10.80	10.75	10.75	10.78	0.13	25.46	31.86	32.04	24.75	6.47	19000	1.04	1.12	1.12
20000	11.00	11.00	10.94	10.88	10.90	10.95	0.12	28.60	33.77	33.57	27.54	6.63	20000	1.29	1.08	1.06
21000	11.07	11.06	10.95	10.90	10.93	10.99	0.17	28.57	38.71	37.52	25.71	6.83	21000	1.20	1.10	1.09
22000	11.13	11.09	11.00	10.96	10.97	11.03	0.16	31.01	34.75	32.79	31.23	7.19	22000	1.08	1.15	1.17
23000	11.24	11.24	11.14	11.13	11.10	11.16	0.14	36.09	30.85	31.08	33.35	7.55	23000	1.29	1.21	1.21
24000	11.26	11.24	11.17	11.11	11.14	11.22	0.15	25.25	34.03	33.41	25.41	7.74	24000	1.18	1.12	1.13
25000	11.29	11.28	11.20	11.16	11.17	11.28	0.13	38.08	35.83	35.72	42.36	8.12	25000	1.09	1.13	1.16
26000	11.42	11.38	11.33	11.27	11.28	11.38	0.15	29.17	33.46	32.89	28.06	8.32	26000	1.20	1.05	1.06
27000	11.47	11.43	11.40	11.34	11.38	11.47	0.13	33.74	34.07	33.58	32.58	8.54	27000	1.22	1.08	1.07
28000	11.54	11.51	11.47	11.38	11.43	11.54	0.16	25.93	45.49	48.37	23.90	8.91	28000	1.17	1.05	1.02
29000	11.66	11.60	11.56	11.50	11.54	11.64	0.15	34.01	38.10	35.46	35.92	9.37	29000	1.25	1.28	1.25
30000	11.72	11.67	11.61	11.58	11.58	11.71	0.14	35.76	32.73	33.45	31.48	9.73	30000	1.21	1.23	1.23
31000	11.77	11.68	11.68	11.62	11.63	11.76	0.15	25.71	43.28	48.70	26.15	10.04	31000	1.20	1.11	1.11
32000	11.85	11.80	11.79	11.69	11.73	11.86	0.18	25.30	33.61	33.43	27.06	10.22	32000	1.24	1.15	1.18
33000	11.92	11.82	11.84	11.74	11.76	11.87	0.19	28.98	32.49	32.81	27.97	10.66	33000	1.11	1.01	1.06
35000	12.07	11.99	12.01	11.94	11.97	12.06	0.13	24.28	37.39	34.26	24.78	11.28	35000	1.29	1.11	1.13
37000	12.19	12.04	12.08	12.05	12.09	12.17	0.16	24.34	32.17	32.33	25.84	12.04	37000	1.16	1.17	1.18
40000	12.41	12.26	12.34	12.24	12.31	12.35	0.17	32.91	32.46	33.75	33.75	13.08	40000	1.16	1.07	1.03
43500	12.62	12.46	12.52	12.43	12.52	12.57	0.19	28.28	43.55	42.67	27.86	14.04	43500	1.09	1.12	1.08

¹Total Loss = Insertion Loss + 9dB Splitter Loss



P.O. Box 350166, Brooklyn, New York 11235-0003 (718) 934-4500 • Fax (718) 332-4661 For detailed performance specs & shopping online see Mini-Circuits web site

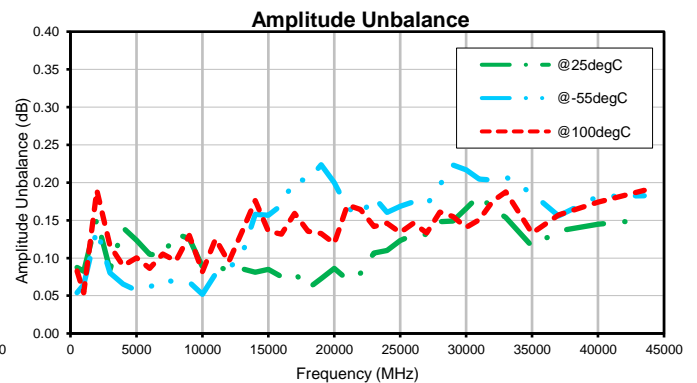
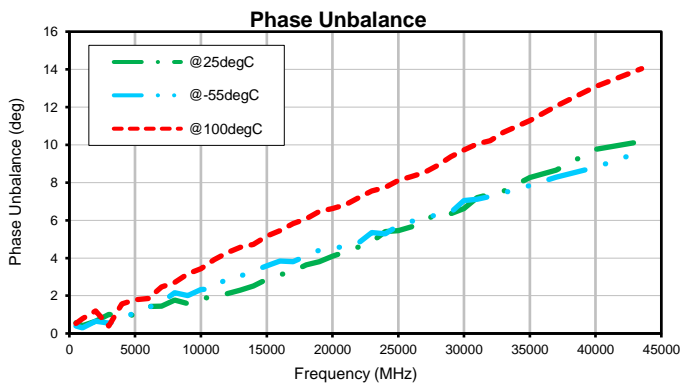
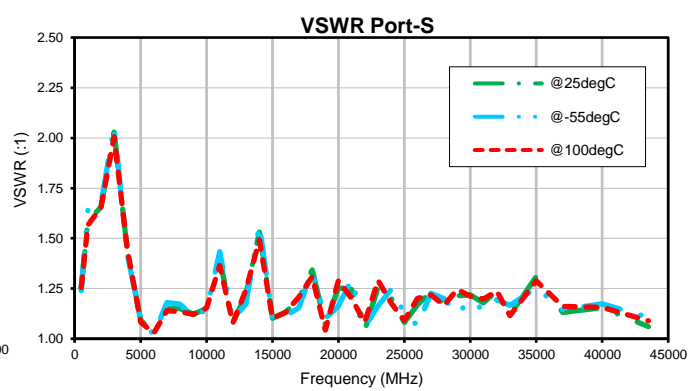
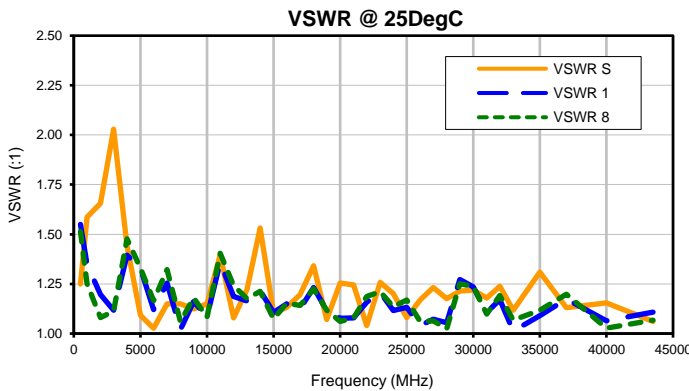
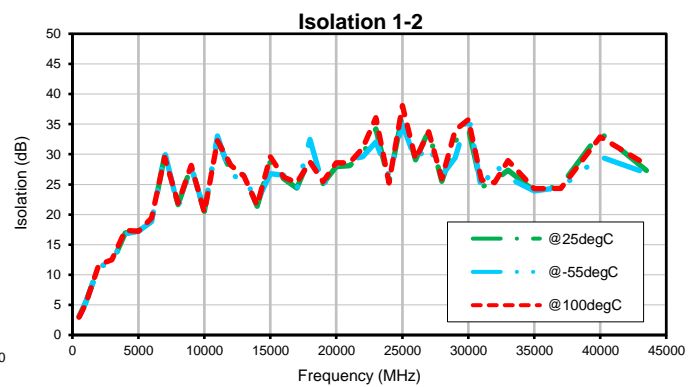
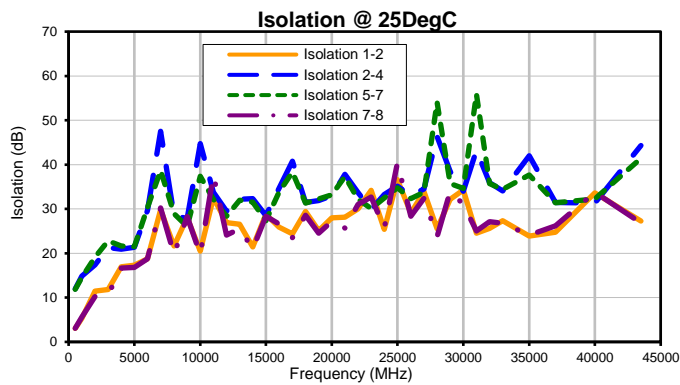
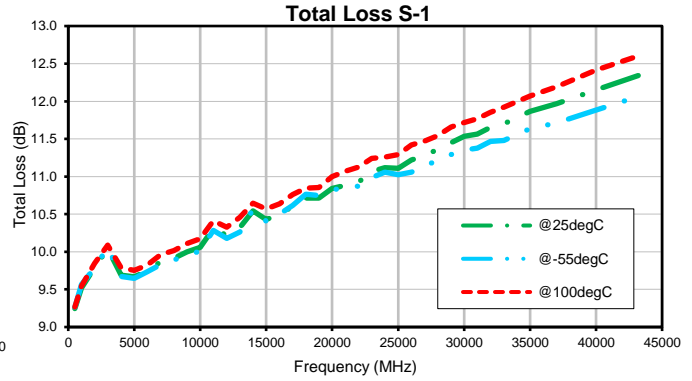
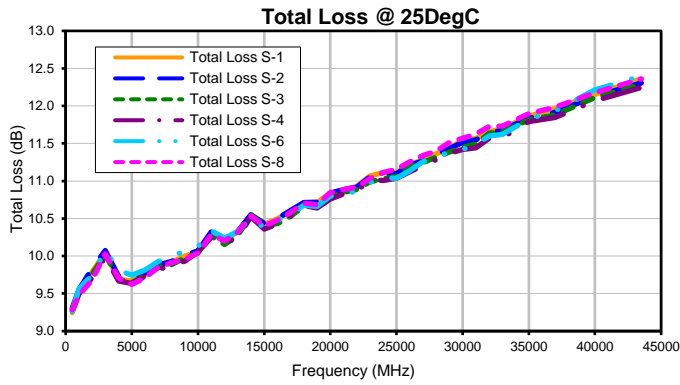


The Design Engineers Search Engine Provides ACTUAL Data Instantly From MINI-CIRCUITS At: www.minicircuits.com

IF/RF MICROWAVE COMPONENTS

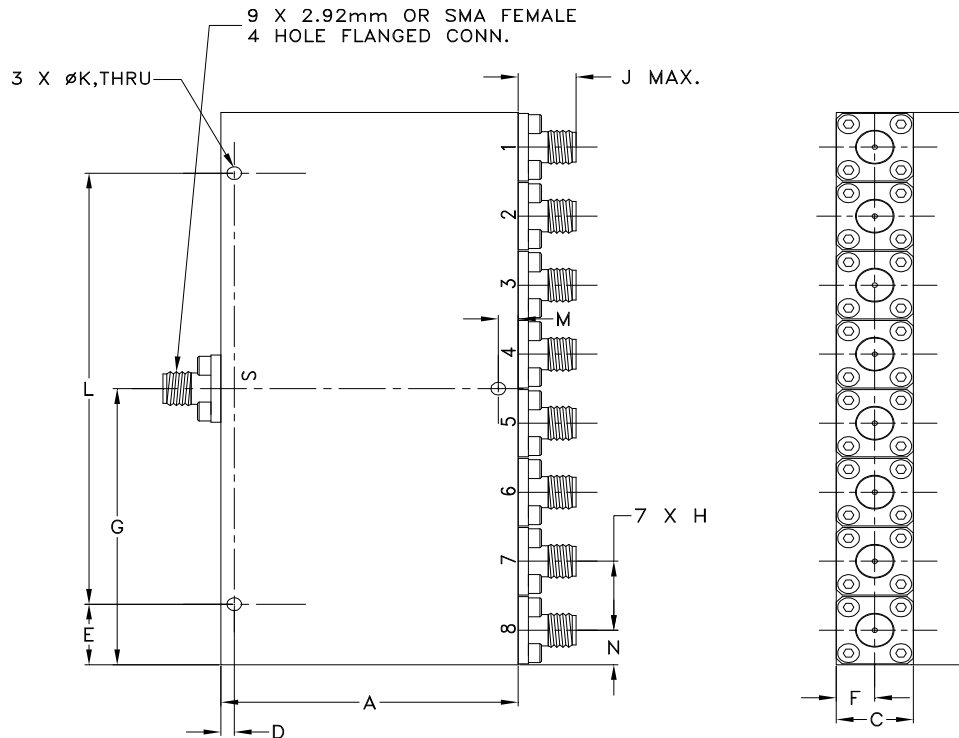
REV. OR
ZC8PD-K0644+
6/7/2019
Page 3 of 3

Typical Performance Curves



Outline Dimensions

UU2415-4



CASE#	A	B	C	D	E	F	G	H	J	K	L	M
UU2415-4	1.93 (49.00)	4.09 (104.00)	.50 (12.70)	0.087 (2.20)	.449 (11.40)	.25 (6.35)	2.05 (52.00)	.51 (13.00)	.43 (11.0)	.094 (2.40)	3.197 (81.20)	.130 (3.30)

CASE#	N	WT. GRAMS
UU2415-4	.26 (6.50)	230

Dimensions are in inches (mm). Tolerances: 2 Pl. \pm .03; 3 Pl. \pm .015

Notes:

1. Case material: Aluminum alloy.
2. Case finish: Painting Color: Blue.
3. Refer to the individual model data sheet for the type of connectors available.



P.O. Box 350166, Brooklyn, New York 11235-0003 (718) 934-4500 Fax (718) 332-4661 For detailed performance specs & shopping online see Mini-Circuits web site



The Design Engineers Search Engine Provides ACTUAL Data Instantly From MINI-CIRCUITS At: www.minicircuits.com

RF/IF MICROWAVE COMPONENTS

UU2415-4 Rev.: BA (06/03/19) M174698 File: UU2415-4.DOCX.DOC

This document and its contents are the property of Mini-Circuits



All Mini-Circuits products are manufactured under exacting quality assurance and control standards, and are capable of meeting published specifications after being subjected to any or all of the following physical and environmental test.

Specification	Test/Inspection Condition	Reference/Spec
Operating Temperature	-55° to 100°C Ambient Environment	Individual Model Data Sheet
Storage Temperature	-55° to 100° C Ambient Environment	Individual Model Data Sheet
Thermal Shock	-55° to 100°C, 25 cycles	MIL-STD-202, Method 107, Condition A-1 except +100°C instead of 85°C
Vibration (High Frequency)	20g peak, 10-2000 Hz, 12 times in each of three perpendicular directions (total 36)	MIL-STD-202, Method 204, Condition D
Mechanical Shock	100g, 6ms sawtooth, 3 shocks each direction 3 axes (total 18)	MIL-STD-202, Method 213, Condition I
Connector Durability	500 mating/unmating cycles	MIL-PRF-39012E, PARAGRAPH 4.6.12