

Engineering Development Model

Power Splitter/Combiner

ZFSC-ED13009/1

8 Way-0°

Important Note

This model has been designed, built and tested in our engineering department. Performance data represents model capability. At present it is a non-catalog model. On request, we can supply a final specification sheet, part number and price/delivery information.



Please click "Back", and then click "Contact Us" for Applications support.

CASE STYLE : UU1268
Photo for reference only

ELECTRICAL SPECIFICATIONS 50Ω @ +25°C					
Parameter		Min.	Typ.	Max.	Units
Frequency		1		800	MHz
Isolation	1 - 10 MHz		41		dB
	10 - 400 MHz		45		dB
	400 - 800 MHz		46		dB
Insertion Loss Above 9.0 dB	1 - 10 MHz		0.66		dB
	10 - 400 MHz		0.70		dB
	400 - 800 MHz		1.40		dB
Phase Unbalance	1 - 10 MHz		0.30		deg.
	10 - 400 MHz		0.85		deg.
	400 - 800 MHz		2.30		deg.
Amplitude Unbalance	1 - 10 MHz		0.07		dB
	10 - 400 MHz		0.07		dB
	400 - 800 MHz		0.17		dB
VSWR	SUM Port		1.13		(:1)
	OUT Ports		1.07		(:1)

MAXIMUM RATINGS	
Operating Temperature	-55°C to 100°C
Storage Temperature	-55°C to 100°C

PIN CONNECTIONS	
SUM PORT	S, TNC, FEMALE
PORT 1	1, TNC, FEMALE
PORT 2	2, TNC, FEMALE
PORT 3	3, TNC, FEMALE
PORT 4	4, TNC, FEMALE
PORT 5	5, TNC, FEMALE
PORT 6	6, TNC, FEMALE
PORT 7	7, TNC, FEMALE
PORT 8	8, TNC, FEMALE

Functional Diagram



8 Way-0° Power Splitter/Combiner

ZFSC-ED13009/1

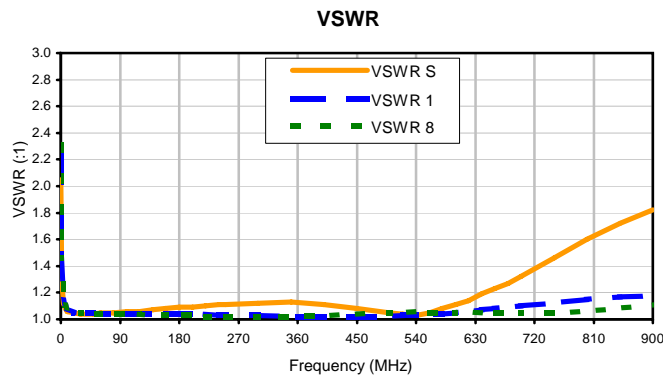
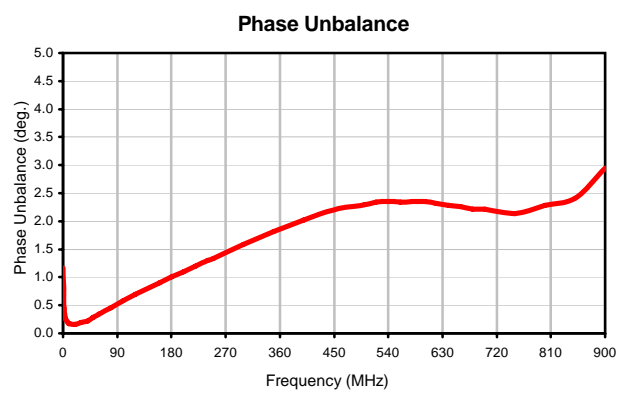
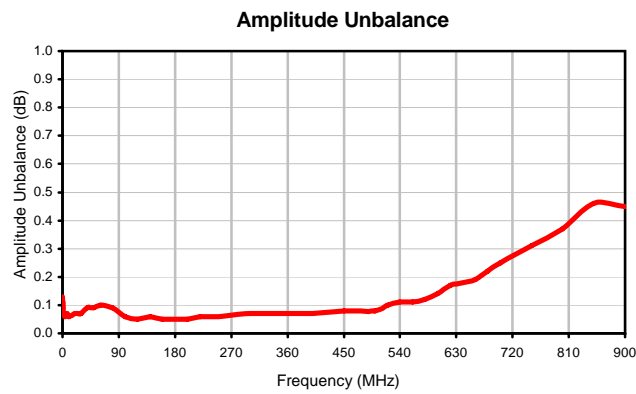
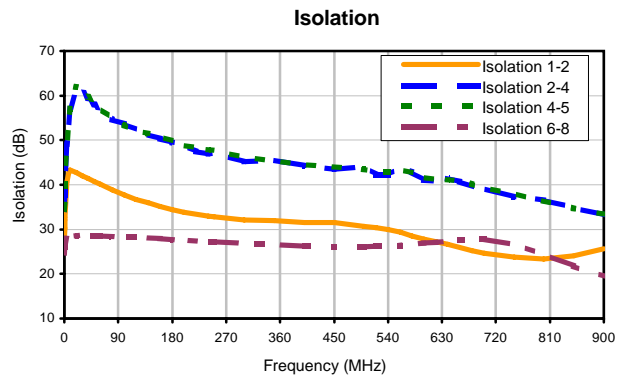
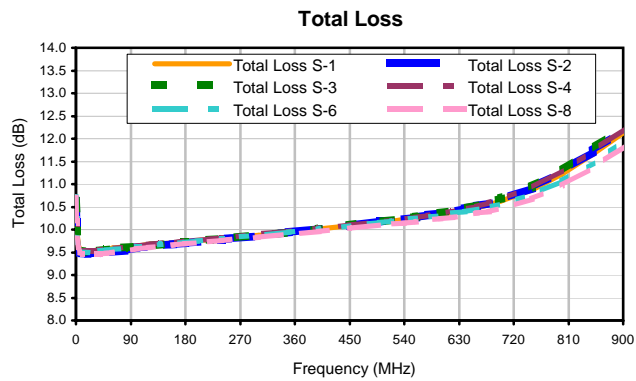
Typical Performance Data

FREQ. (MHz)	TOTAL LOSS ¹ (dB)						AMP. UNBAL. (dB)	ISOLATION (dB)				PHASE UNBAL. (deg.)	FREQ. (MHz)	VSWR (:1)		
	S-1	S-2	S-3	S-4	S-6	S-8		1-2	2-4	4-5	6-8			S	1	8
0.3	10.71	10.64	10.64	10.67	10.72	10.70	0.13	27.84	34.36	34.34	24.67	1.16	0.3	2.05	2.26	2.31
0.6	10.23	10.16	10.18	10.21	10.22	10.19	0.09	30.27	37.73	37.68	26.12	0.67	0.6	1.52	1.67	1.69
0.9	10.05	9.99	10.01	10.04	10.04	10.01	0.08	32.17	39.71	39.66	26.57	0.55	0.9	1.37	1.49	1.50
1.0	10.01	9.96	9.98	10.00	10.00	9.97	0.07	32.73	40.22	40.18	26.66	0.51	1.0	1.34	1.45	1.46
4.0	9.64	9.59	9.62	9.63	9.62	9.59	0.06	40.55	49.01	48.90	27.93	0.25	4.0	1.12	1.16	1.16
7.0	9.56	9.50	9.54	9.56	9.54	9.49	0.07	42.75	53.66	53.58	28.29	0.20	7.0	1.08	1.10	1.10
10.0	9.53	9.48	9.52	9.53	9.51	9.47	0.06	43.23	56.87	57.12	28.44	0.17	10.0	1.06	1.08	1.08
20.0	9.53	9.47	9.51	9.53	9.50	9.46	0.07	42.79	61.07	61.93	28.58	0.16	20.0	1.05	1.05	1.05
30.0	9.54	9.49	9.52	9.54	9.51	9.47	0.07	42.07	61.10	61.50	28.60	0.19	30.0	1.04	1.05	1.05
40.0	9.56	9.48	9.54	9.55	9.53	9.47	0.09	41.38	59.34	59.69	28.56	0.22	40.0	1.04	1.05	1.05
50.0	9.57	9.49	9.56	9.57	9.55	9.48	0.09	40.71	57.88	57.96	28.53	0.29	50.0	1.04	1.05	1.04
60.0	9.59	9.51	9.57	9.59	9.56	9.49	0.10	40.12	56.62	57.20	28.48	0.34	60.0	1.05	1.04	1.04
80.0	9.62	9.54	9.60	9.61	9.59	9.52	0.09	38.90	54.68	55.04	28.38	0.46	80.0	1.05	1.04	1.04
100.0	9.64	9.60	9.62	9.64	9.62	9.58	0.06	37.71	53.58	53.33	28.28	0.58	100.0	1.06	1.04	1.04
120.0	9.67	9.63	9.65	9.67	9.64	9.61	0.05	36.73	52.40	52.13	28.18	0.70	120.0	1.06	1.04	1.04
140.0	9.69	9.66	9.67	9.70	9.67	9.64	0.06	35.92	51.18	51.52	28.05	0.80	140.0	1.07	1.04	1.03
160.0	9.71	9.68	9.70	9.72	9.70	9.66	0.05	35.13	50.36	50.74	27.88	0.90	160.0	1.08	1.04	1.03
180.0	9.74	9.71	9.72	9.75	9.72	9.69	0.05	34.40	49.50	49.72	27.71	1.00	180.0	1.09	1.04	1.03
200.0	9.76	9.73	9.75	9.76	9.75	9.71	0.05	33.80	48.84	48.93	27.57	1.10	200.0	1.09	1.04	1.03
220.0	9.78	9.76	9.77	9.79	9.77	9.73	0.06	33.35	47.53	48.30	27.44	1.20	220.0	1.10	1.04	1.02
240.0	9.81	9.78	9.80	9.82	9.79	9.76	0.06	32.98	46.96	47.86	27.29	1.30	240.0	1.11	1.03	1.02
250.0	9.82	9.80	9.81	9.83	9.81	9.77	0.06	32.81	47.20	47.73	27.20	1.34	250.0	1.11	1.03	1.02
300.0	9.88	9.86	9.87	9.90	9.87	9.83	0.07	32.04	45.23	46.22	26.83	1.59	300.0	1.12	1.03	1.02
350.0	9.95	9.94	9.94	9.96	9.94	9.90	0.07	31.89	45.47	45.38	26.54	1.82	350.0	1.13	1.02	1.02
400.0	10.02	10.01	10.02	10.03	10.02	9.96	0.07	31.57	44.32	44.60	26.26	2.02	400.0	1.11	1.02	1.03
450.0	10.09	10.09	10.10	10.10	10.09	10.03	0.08	31.54	43.46	43.99	26.09	2.20	450.0	1.08	1.02	1.04
500.0	10.16	10.18	10.18	10.17	10.16	10.10	0.08	30.70	44.00	43.43	26.13	2.29	500.0	1.05	1.02	1.05
520.0	10.19	10.20	10.21	10.20	10.19	10.12	0.10	30.39	42.36	42.83	26.21	2.34	520.0	1.04	1.03	1.05
540.0	10.22	10.23	10.25	10.23	10.22	10.14	0.11	29.98	42.29	42.90	26.21	2.35	540.0	1.03	1.03	1.06
560.0	10.25	10.27	10.28	10.27	10.25	10.17	0.11	29.33	43.77	43.26	26.30	2.34	560.0	1.05	1.04	1.05
580.0	10.29	10.32	10.32	10.31	10.28	10.21	0.12	28.52	42.84	42.75	26.61	2.35	580.0	1.08	1.04	1.05
600.0	10.33	10.36	10.37	10.36	10.31	10.24	0.14	27.80	41.05	41.70	26.94	2.35	600.0	1.11	1.05	1.05
620.0	10.38	10.40	10.42	10.41	10.36	10.27	0.17	27.22	40.92	41.12	27.12	2.32	620.0	1.14	1.06	1.06
640.0	10.43	10.46	10.47	10.45	10.40	10.31	0.18	26.60	41.45	41.21	27.30	2.28	640.0	1.19	1.07	1.05
660.0	10.48	10.52	10.53	10.51	10.45	10.36	0.19	25.89	40.72	41.02	27.62	2.26	660.0	1.23	1.08	1.05
680.0	10.55	10.58	10.61	10.59	10.49	10.40	0.22	25.22	39.53	40.15	27.86	2.22	680.0	1.27	1.09	1.05
700.0	10.64	10.66	10.69	10.68	10.57	10.46	0.25	24.71	39.14	39.33	27.83	2.21	700.0	1.32	1.10	1.05
750.0	10.87	10.92	10.95	10.93	10.77	10.67	0.31	23.77	37.31	37.93	26.69	2.14	750.0	1.46	1.12	1.05
800.0	11.23	11.28	11.30	11.29	11.07	10.97	0.37	23.38	36.52	36.46	24.39	2.28	800.0	1.60	1.15	1.06
850.0	11.66	11.73	11.77	11.73	11.47	11.36	0.46	24.03	34.85	34.71	21.73	2.41	850.0	1.72	1.17	1.08
900.0	12.13	12.20	12.24	12.21	11.96	11.83	0.45	25.61	33.30	33.42	19.44	2.95	900.0	1.82	1.18	1.11

¹Total Loss = Insertion Loss + 9dB Splitter Loss

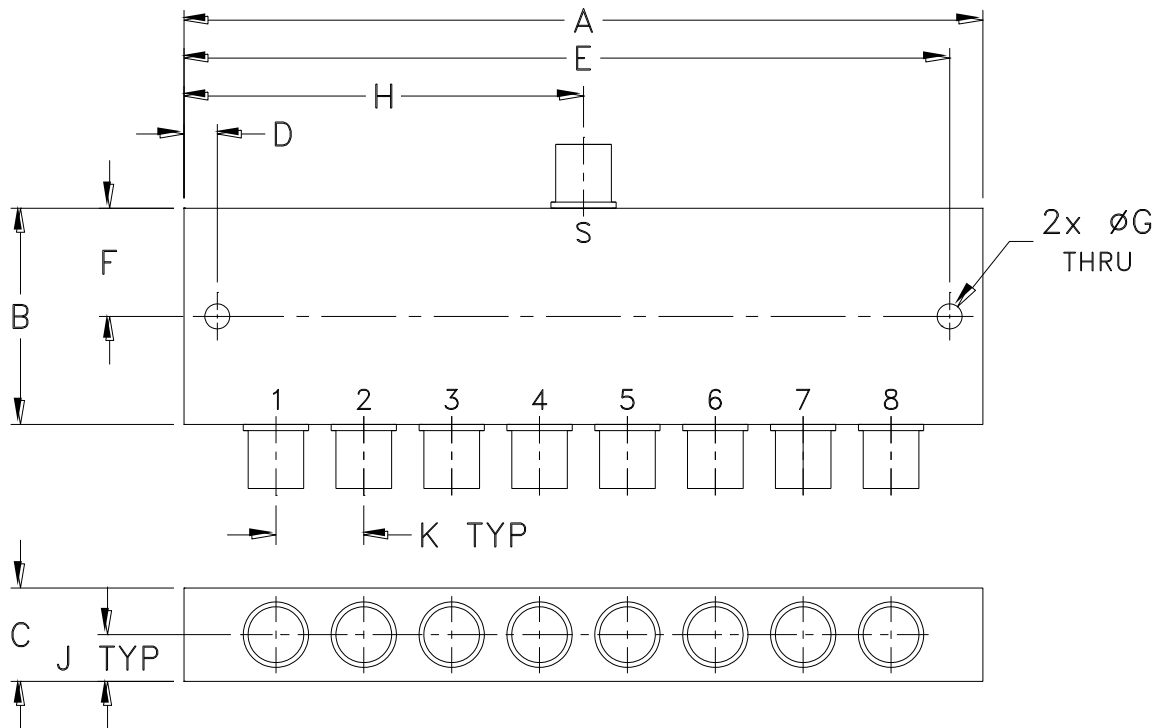


Typical Performance Curves



Outline Dimensions

UU1268



CASE#	A	B	C	D	E	F	G	H	J	K	WT. GRAMS
UU1268	6.00 (152.40)	1.62 (41.15)	.70 (17.78)	.250 (6.35)	5.75 (146.05)	.810 (20.57)	.187 (4.75)	3.00 (76.20)	.35 (8.89)	.660 (16.76)	300

Dimensions are in inches (mm). Tolerances: 2 Pl. $\pm .03$; 3 Pl. $\pm .015$

Notes:

1. Case material: Aluminum alloy.
2. Case finish:
For RoHS Case Styles: Clear chemical conversion coating, non-chrome or trivalent chrome based.
3. Refer to the individual model data sheet for the type of connectors available.



P.O. Box 350166, Brooklyn, New York 11235-0003 (718) 934-4500 Fax (718) 332-4661 For detailed performance specs & shopping online see Mini-Circuits web site



The Design Engineers Search Engine Provides ACTUAL Data Instantly From MINI-CIRCUITS At: www.minicircuits.com

RF/IF MICROWAVE COMPONENTS



All Mini-Circuits products are manufactured under exacting quality assurance and control standards, and are capable of meeting published specifications after being subjected to any or all of the following physical and environmental test.

Specification	Test/Inspection Condition	Reference/Spec
Operating Temperature	-55° to 100°C Ambient Environment	Individual Model Data Sheet
Storage Temperature	-55° to 100° C Ambient Environment	Individual Model Data Sheet
Barometric Pressure	100,000 Feet	MIL-STD-202, Method 105, Condition D
Humidity	90% RH, 65°C Units may require bake-out after humidity to restore full performance.	MIL-STD-202, Method 103
Thermal Shock	-65° to 125°C, 5 cycles	MIL-STD-202, Method 107, Condition B
Vibration (High Frequency)	20g peak, 10-2000 Hz, 12 times in each of three perpendicular directions (total 36)	MIL-STD-202, Method 204, Condition D
Mechanical Shock	100g, 6ms sawtooth, 3 shocks each direction 3 axes (total 18)	MIL-STD-202, Method 213, Condition I