



COAXIAL

# Wideband Amplifier

## ZVE-403-K+ ZVE-403X-K+

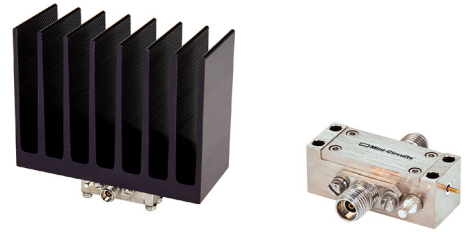
50Ω 26 to 40 GHz 2.92 mm Female

### THE BIG DEAL

- Wideband, 26 to 40 GHz
- High Output IP3, +28 dBm Typ.
- Output P3dB, +20 dBm Typ.
- High Gain, 22 ±2 dB Typ.

### APPLICATIONS

- Radar and Military
- Test Instrumentation
- Satellite Repeaters
- Communication



Generic photo used for illustration purposes only

Model No.	ZVE-403-K+	ZVE-403X-K+▲
Option	With Heatsink	Without Heatsink
Case Style	AV1280-2	
Connectors	2.92 mm female	

**+RoHS Compliant**  
 The +Suffix identifies RoHS Compliance.  
 See our website for methodologies and qualifications

### PRODUCT OVERVIEW

Mini-Circuits' ZVE-403(X)-K+ is a Class A, four-stage, unconditionally stable amplifier providing flat gain over a wide frequency range from 26 to 40 GHz. This model is capable of delivering up to 0.125 W output power at P3dB with high output IP3 supporting a wide range of sensitive, high-dynamic range receiver applications and many systems where high performance over wideband is needed. It operates on a +12 V supply and features built-in safety features including protection against reverse bias and immunity to accidental (less than 2 minutes) open or short loads. The amplifier comes in a rugged, compact case (1.2x0.46x0.45") with K-type (2.92 mm) connectors and an optional heatsink for efficient cooling.

### KEY FEATURES

Feature	Advantages
Wideband, 26 to 40 GHz Able to Work from 25 to 42 GHz	Enables a single amplifier to be used in a wide range of applications.
Excellent Gain Flatness, ±2.0 dB Across Full Frequency Range	Provides consistent performance across its operating frequency, minimizing the need for external equalizing networks in wideband applications.
High Gain, 22 dB Typ.	Reduces the number of gain stages, lowering component count and overall system cost.
Class A Amplifier	Provides good linearity with low signal distortion.
High Output IP3, +28 dBm Typ.	The high IP3 results in high SFDR (Spurious Free Dynamic Range) and makes the ZVE-403-K+ ideal for use in high performance receiver front end (RFE) as it gives the user the advantages in a real world of multi-tone interference.
Rugged Design	Built-in protection against reverse bias and accidental open and short loads provides added reliability for demanding operating conditions.





COAXIAL

# Wideband Amplifier

## ZVE-403-K+ ZVE-403X-K+

50Ω 26 to 40 GHz 2.92 mm Female

### ELECTRICAL SPECIFICATIONS AT +25 °C

Parameter	Condition (GHz)	ZVE-403-K+ ZVE-403X-K+▲			Units
		Min.	Typ.	Max.	
Frequency Range		26		40	GHz
Gain	26-40	15.5	22		dB
Gain Flatness	26-40		±2.0	±3.0	dB
Input VSWR	26-40		2.0	3.0	:1
Output VSWR	26-40		2.0	3.0	:1
Output Power at 1 dB Compression	26-40	+14.5	+19		dBm
Output Power at 3 dB Compression	26-40	+16.5	+20		dBm
Noise Figure	26-40		8		dB
DC Supply Voltage		+11	+12 <sup>1</sup>	+14	V
Supply Current			300	400	mA

1. Recommended Operating Voltage.

▲ Heatsink not included. Alternative heat sinking and heat removal must be provided by the user to limit maximum baseplate temperature to +85 °C, in order to ensure proper performance. For reference, this requires thermal resistance of user's external heatsink to be 5.0 °C/W max.

### ABSOLUTE MAXIMUM RATINGS

Parameter	Ratings
Operating Temperature	ZVE-403-K+ -40 °C to +60 °C ambient ZVE-403X-K+ -40 °C to +85 °C baseplate temp.
Storage Temperature	-65 °C to +150 °C
DC Voltage	+14 V
CW Input RF Power (No Damage)	+17 dBm

Permanent damage may occur if any of these limits are exceeded.





COAXIAL

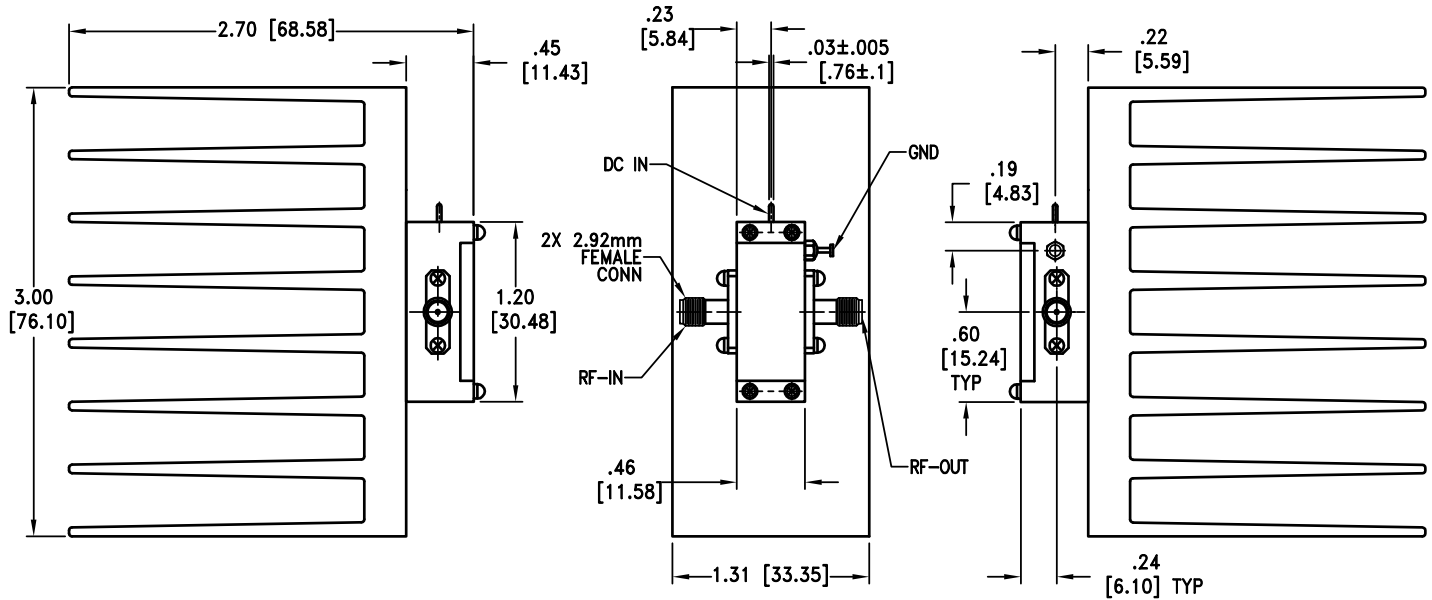
# Wideband Amplifier

## ZVE-403-K+ ZVE-403X-K+

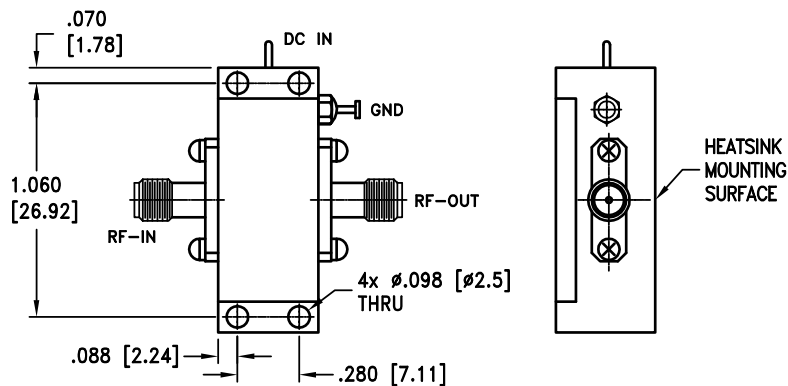
Mini-Circuits

50Ω 26 to 40 GHz 2.92 mm Female

### OUTLINE DRAWING FOR MODELS WITH HEATSINK (ZVE-403-K+)



### MOUNTING INFORMATION FOR MODELS WITHOUT HEATSINK (ZVE-403X-K+)



Weight: 150 grams; Weight without heatsink: 17 grams  
Dimensions are in inches [mm]

Mini-Circuits



COAXIAL

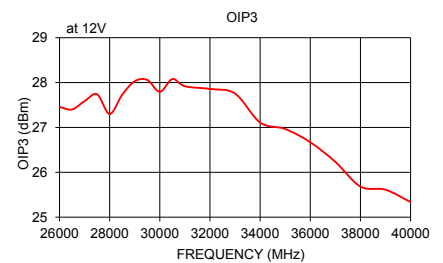
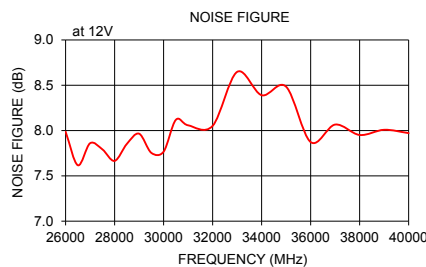
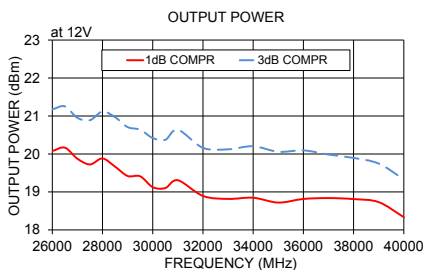
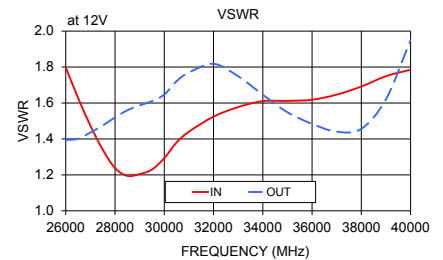
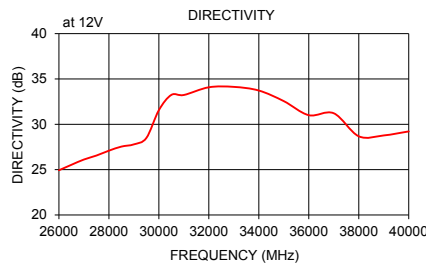
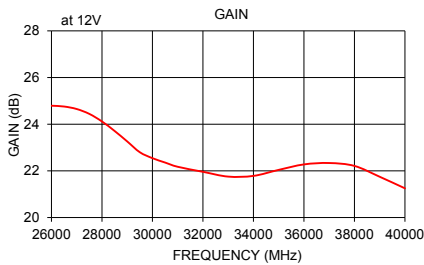
# Wideband Amplifier

## ZVE-403-K+ ZVE-403X-K+

50Ω 26 to 40 GHz 2.92 mm Female

### TYPICAL PERFORMANCE DATA/CURVES

Frequency (MHz)	Gain (dB)	Directivity (dB)	VSWR (:1)		P <sub>OUT</sub> at 1 dB Compr. (dBm)	P <sub>OUT</sub> at 3 dB Compr. (dBm)	Noise Figure (dB)	OIP3 (dBm)
	+12 V	+12 V	IN	OUT	+12 V	+12 V	+12 V	+12 V
26000	24.79	24.93	1.80	1.39	20.08	21.17	7.99	27.46
26500	24.76	25.53	1.63	1.40	20.17	21.25	7.62	27.40
27000	24.65	26.11	1.47	1.44	19.87	20.95	7.86	27.59
27500	24.44	26.55	1.34	1.47	19.72	20.89	7.79	27.74
28000	24.12	27.09	1.24	1.52	19.88	21.12	7.67	27.30
28500	23.71	27.54	1.19	1.56	19.67	20.97	7.85	27.73
29000	23.26	27.79	1.20	1.59	19.42	20.71	7.97	28.03
29500	22.80	28.49	1.23	1.61	19.41	20.64	7.75	28.06
30000	22.54	31.56	1.29	1.65	19.13	20.42	7.77	27.79
30500	22.36	33.24	1.38	1.72	19.10	20.37	8.12	28.08
31000	22.17	33.23	1.44	1.77	19.31	20.64	8.06	27.92
32000	21.96	34.08	1.52	1.82	18.89	20.16	8.05	27.86
33000	21.75	34.13	1.58	1.75	18.82	20.12	8.65	27.75
34000	21.78	33.72	1.61	1.65	18.85	20.20	8.39	27.11
35000	22.04	32.55	1.61	1.55	18.72	20.06	8.48	26.96
36000	22.28	31.00	1.62	1.48	18.81	20.09	7.87	26.67
37000	22.34	31.22	1.65	1.44	18.84	19.98	8.07	26.23
38000	22.21	28.68	1.69	1.46	18.81	19.90	7.95	25.68
39000	21.75	28.77	1.75	1.62	18.73	19.75	8.01	25.61
40000	21.25	29.21	1.79	1.95	18.34	19.33	7.97	25.34



- NOTES**
- A. Performance and quality attributes and conditions not expressly stated in this specification document are intended to be excluded and do not form a part of this specification document.
  - B. Electrical specifications and performance data contained in this specification document are based on Mini-Circuit's applicable established test performance criteria and measurement instructions.
  - C. The parts covered by this specification document are subject to Mini-Circuits standard limited warranty and terms and conditions (collectively, "Standard Terms"); Purchasers of this part are entitled to the rights and benefits contained therein. For a full statement of the standard. Terms and the exclusive rights and remedies thereunder, please visit Mini-Circuits' website at [www.minicircuits.com/terms/viewterm.html](http://www.minicircuits.com/terms/viewterm.html)



# Super Ultra Wideband Amplifier

# ZVE-403-K+

## Typical Performance Data

FREQUENCY (MHz)	GAIN (dB) 12V	DIRECTIVITY (dB) 12V	VSWR (:1)		NOISE FIGURE (dB) 12V	Pout at 1 dB COMPRESSION	Pout at 3 dB COMPRESSION	OUTPUT IP3 (dBm) 12V
			IN 12V	OUT 12V		(dBm) 12V	(dBm) 12V	
25000	24.96	23.52	2.12	1.37	7.79	19.54	20.74	27.81
25500	24.83	24.27	1.97	1.38	8.07	20.24	21.36	27.41
26000	24.79	24.93	1.80	1.39	7.99	20.08	21.17	27.46
26500	24.76	25.53	1.63	1.40	7.62	20.17	21.25	27.40
27000	24.65	26.11	1.47	1.44	7.86	19.87	20.95	27.59
27500	24.44	26.55	1.34	1.47	7.79	19.72	20.89	27.74
28000	24.12	27.09	1.24	1.52	7.67	19.88	21.12	27.30
28500	23.71	27.54	1.19	1.56	7.85	19.67	20.97	27.73
29000	23.26	27.79	1.20	1.59	7.97	19.42	20.71	28.03
29500	22.80	28.49	1.23	1.61	7.75	19.41	20.64	28.06
30000	22.54	31.56	1.29	1.65	7.77	19.13	20.42	27.79
30500	22.36	33.24	1.38	1.72	8.12	19.10	20.37	28.08
31000	22.17	33.23	1.44	1.77	8.06	19.31	20.64	27.92
31500	22.06	33.55	1.49	1.81	7.67	18.86	20.18	27.92
32000	21.96	34.08	1.52	1.82	8.05	18.89	20.16	27.86
32500	21.84	34.13	1.55	1.79	8.63	19.03	20.38	27.56
33000	21.75	34.13	1.58	1.75	8.65	18.82	20.12	27.75
33500	21.73	34.02	1.60	1.69	8.33	18.82	20.14	27.37
34000	21.78	33.72	1.61	1.65	8.39	18.85	20.20	27.11
34500	21.90	33.30	1.62	1.59	8.65	18.72	20.05	27.00
35000	22.04	32.55	1.61	1.55	8.48	18.72	20.06	26.96
35500	22.18	31.77	1.61	1.50	8.00	18.95	20.31	26.67
36000	22.28	31.00	1.62	1.48	7.87	18.81	20.09	26.67
36500	22.32	31.74	1.64	1.46	8.08	18.80	19.96	26.34
37000	22.34	31.22	1.65	1.44	8.07	18.84	19.98	26.23
37500	22.32	29.33	1.66	1.43	7.90	18.28	19.39	25.82
38000	22.21	28.68	1.69	1.46	7.95	18.81	19.90	25.68
38500	22.01	28.64	1.72	1.53	8.09	18.78	19.80	25.73
39000	21.75	28.77	1.75	1.62	8.01	18.73	19.75	25.61
39500	21.44	28.59	1.79	1.78	7.79	18.44	19.44	25.49
40000	21.25	29.21	1.79	1.95	7.97	18.34	19.33	25.34
40500	20.91	31.50	1.75	2.11	--	18.52	19.47	25.30
41000	20.53	31.55	1.74	2.31	--	18.03	19.07	25.29
41500	20.16	30.88	1.70	2.54	--	17.69	18.72	25.18
42000	19.79	29.73	1.63	2.78	--	17.48	18.52	24.71



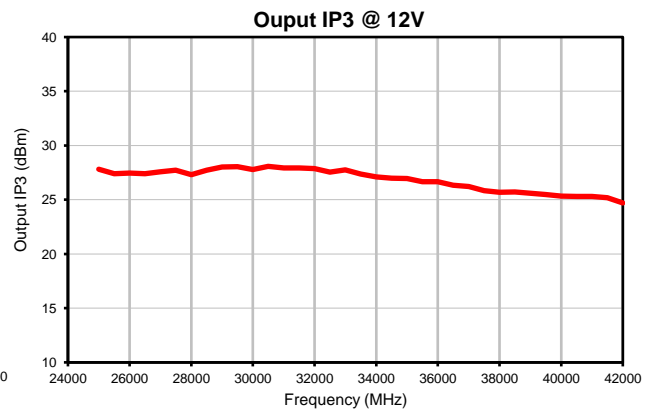
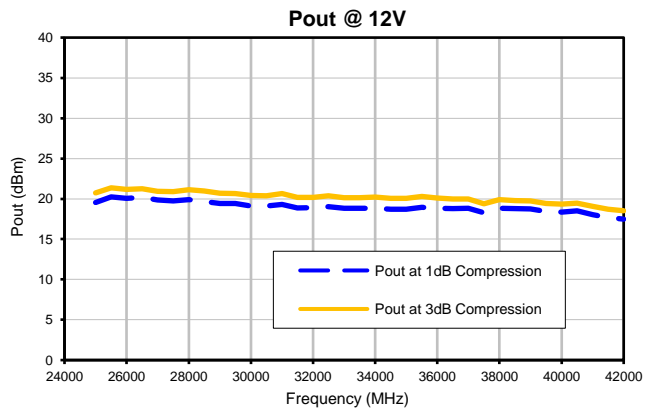
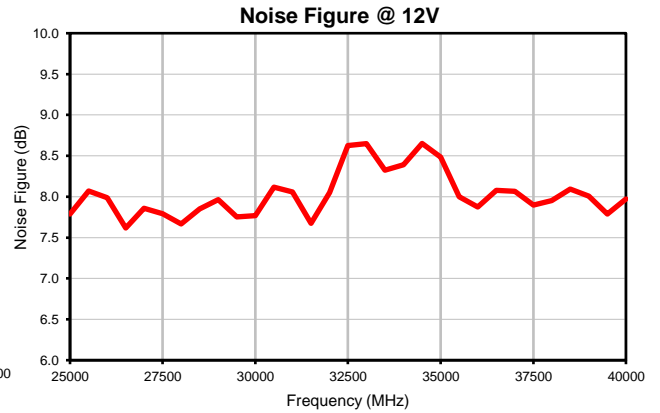
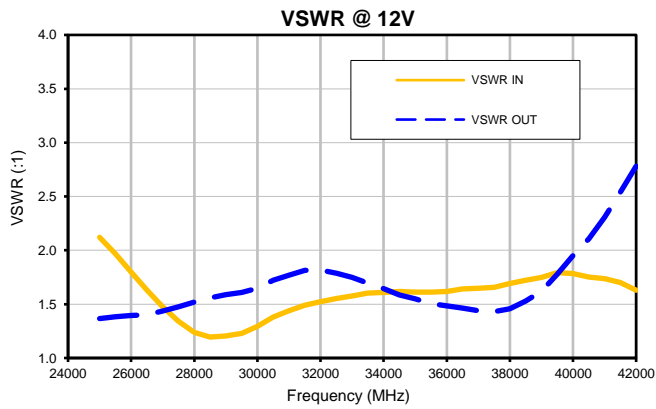
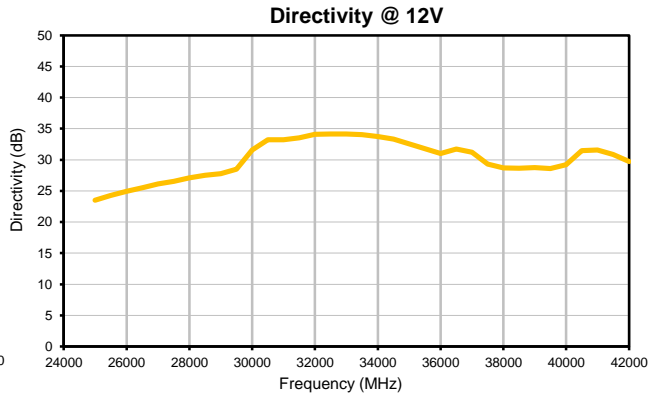
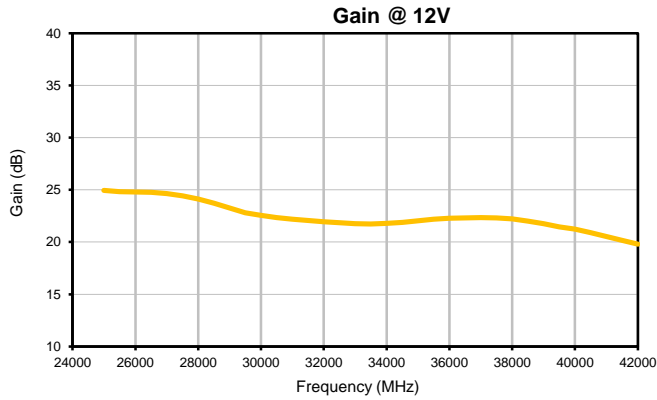
P.O. Box 350166, Brooklyn, New York 11235-0003 (718) 934-4500 • Fax (718) 332-4661 For detailed performance specs & shopping online see Mini-Circuits web site  
 The Design Engineers Search Engine Provides ACTUAL Data Instantly From MINI-CIRCUITS At: [www.minicircuits.com](http://www.minicircuits.com)



IF/RF MICROWAVE COMPONENTS

REV. OR  
 ZVE-403-K+  
 4/3/2019  
 Page 1 of 1

## Typical Performance Curves

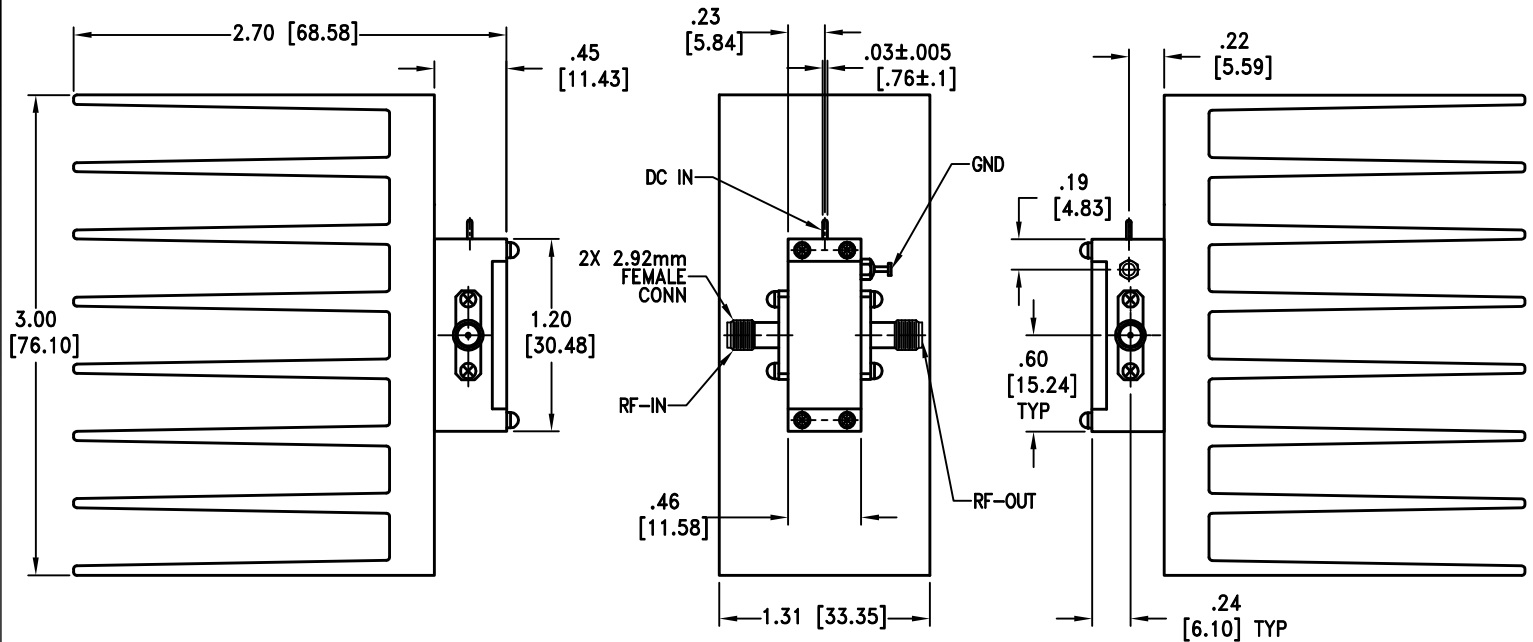


# Case Style

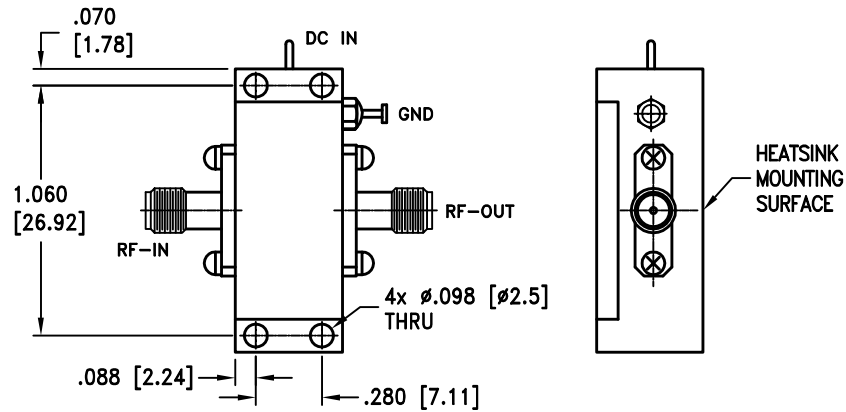
# AV

## Outline Dimensions

## AV1280-2



### MOUNTING INFORMATION OF MODEL WITHOUT HEATSINK



Weight: 150 grams; Weight without heatsink: 17 grams

Dimensions are in inches (mm). Tolerances: 2 Pl. ±.03; 3 Pl. ±.015

#### Notes:

1. Case material: Aluminum alloy
2. Case finish: Nickel plate.
3. Heat sink finish: Black anodize.

**Mini-Circuits®**  
ISO 9001 ISO 14001 CERTIFIED

ALL NEW  
minicircuits.com

P.O. Box 350166, Brooklyn, New York 11235-0003 (718) 934-4500 Fax (718) 332-4661 For detailed performance specs & shopping online see Mini-Circuits web site



The Design Engineers Search Engine Provides ACTUAL Data Instantly From MINI-CIRCUITS At: [www.minicircuits.com](http://www.minicircuits.com)

RF/IF MICROWAVE COMPONENTS



All Mini-Circuits products are manufactured under exacting quality assurance and control standards, and are capable of meeting published specifications after being subjected to any or all of the following physical and environmental test.

Specification	Test/Inspection Condition	Reference/Spec
Operating Temperature	-55° to 54° C Ambient Environment	Individual Model Data Sheet
Storage Temperature	-55° to 100° C Ambient Environment	Individual Model Data Sheet
Stabilization Bake	(non-operating) 125°C, 24 hours	- - -
Burn-in at Elevated Temp.	(DC on) 160 hours at 85° C	MIL-STD-202, Method 108
Thermal Shock	-55° to 100°C, 5 cycles	MIL-STD-202, Method 107, Condition A, except 100°C