

# Coaxial Frequency Mixer

## ZX05-10H+ ZX05-10H

Level 17 (LO Power +17 dBm) 10 to 1000 MHz



CASE STYLE: FL905

### Maximum Ratings

Operating Temperature	-40°C to 85°C
Storage Temperature	-55°C to 100°C
RF Power	200mW
IF Current	40mA

### Coaxial Connections

LO	1
RF	2
IF	3

### Features

- rugged construction
- small size
- low conversion loss
- high L-R isolation
- protected by US Patents 6,133,525; 6,790,049 & 6,947,717

### Applications

- cellular
- PCS
- instrumentation
- satellite communication

Connectors	Model	Price	Qty.
SMA	ZX05-10H-S(+)	\$41.95 ea.	(1-24)

+ RoHS compliant in accordance with EU Directive (2002/95/EC)

The +Suffix identifies RoHS Compliance. See our web site for RoHS Compliance methodologies and qualifications.

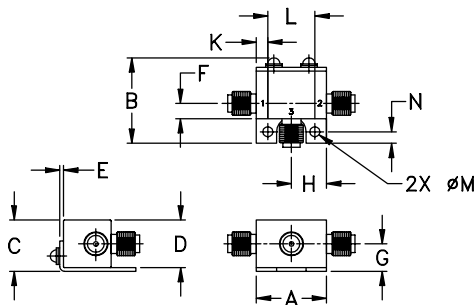
### Electrical Specifications (T<sub>AMB</sub>=25°C)

FREQUENCY (MHz)	CONVERSION LOSS (dB)	LO-RF ISOLATION (dB)			LO-IF ISOLATION (dB)			IP3 at center band (dBm)										
		L	M	U	L	M	U											
10-1000	DC-800	7.0	0.1	8.5	9.5	68	52	55	38	47	25	46	30	32	20	26	13	22

1 dB COMP.: +14 dBm typ.  
Conversion Loss increases when IF is above 150 MHz.

L = low range [f<sub>L</sub> to 10 f<sub>L</sub>] M = mid range [10 f<sub>L</sub> to f<sub>L</sub>/2] U = upper range [f<sub>L</sub>/2 to f<sub>L</sub>]  
m = mid band [2f<sub>L</sub> to f<sub>L</sub>/2]

### Outline Drawing



### Outline Dimensions (inch/mm)

A	B	C	D	E	F	G
.74	.90	.54	.50	.04	.16	.29
18.80	22.86	13.72	12.70	1.02	4.06	7.37

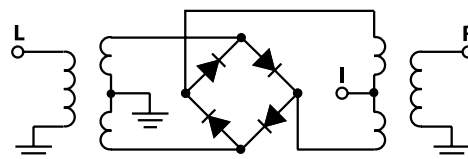
  

H	J	K	L	M	N	wt
.37	--	.122	.496	.106	.122	grams
9.40	--	3.10	12.60	2.69	3.10	20.0

### Typical Performance Data

Frequency (MHz)		Conversion Loss (dB)	Isolation L-R (dB)	Isolation L-I (dB)	VSWR RF Port (:1)	VSWR LO Port (:1)
RF	LO	LO +17dBm	LO +17dBm	LO +17dBm	LO +17dBm	LO +17dBm
10.10	40.10	7.55	81.69	62.06	1.43	1.13
50.10	80.10	7.39	69.91	47.32	1.39	1.09
100.10	70.10	7.47	64.18	40.85	1.40	1.13
143.85	113.85	7.39	61.39	37.09	1.39	1.18
215.10	185.10	7.24	56.02	32.50	1.38	1.20
262.60	232.60	7.10	54.66	30.65	1.38	1.19
310.10	280.10	7.07	53.72	29.51	1.40	1.20
357.60	327.60	7.02	53.34	28.60	1.39	1.17
405.10	375.10	7.15	51.82	28.24	1.40	1.20
452.60	422.60	7.04	50.25	27.84	1.39	1.18
500.10	470.10	7.24	48.94	27.66	1.41	1.24
552.10	522.10	7.17	46.94	27.44	1.39	1.23
616.10	586.10	7.30	45.19	27.21	1.38	1.30
648.10	618.10	7.31	44.07	27.04	1.38	1.32
712.10	682.10	7.39	42.17	25.98	1.35	1.34
776.10	746.10	7.14	39.71	24.50	1.32	1.45
840.10	810.10	7.25	36.65	23.70	1.28	1.53
904.10	874.10	7.47	34.81	23.29	1.26	1.56
968.10	938.10	7.65	33.06	22.47	1.23	1.69
1000.10	970.10	7.67	32.44	21.87	1.23	1.70

### Electrical Schematic



**Mini-Circuits**  
ISO 9001 ISO 14001 CERTIFIED

ALL NEW  
minicircuits.com

P.O. Box 350166, Brooklyn, New York 11235-0003 (718) 934-4500 Fax (718) 332-4661 For detailed performance specs & shopping online see Mini-Circuits web site

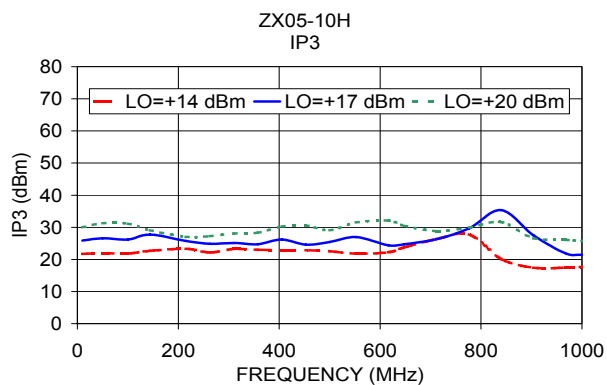
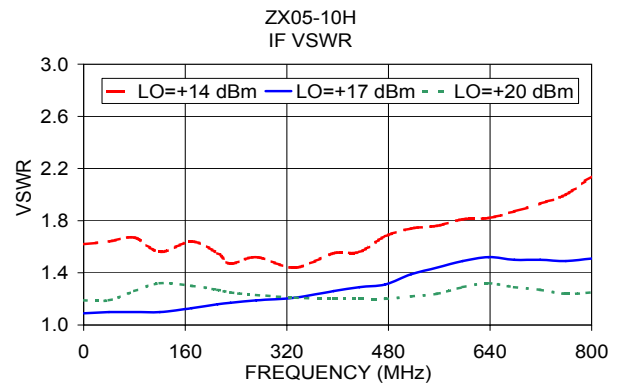
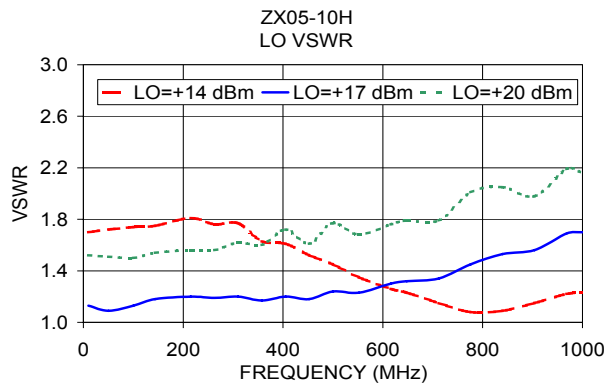
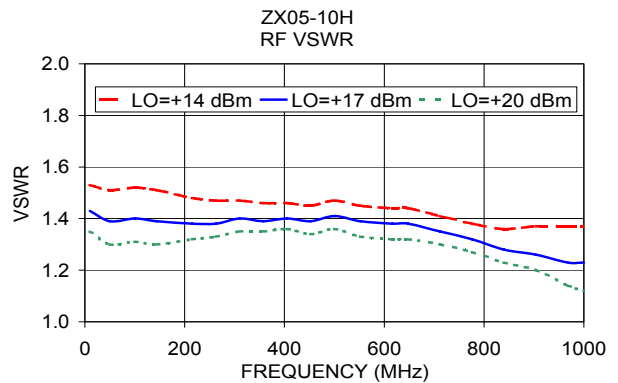
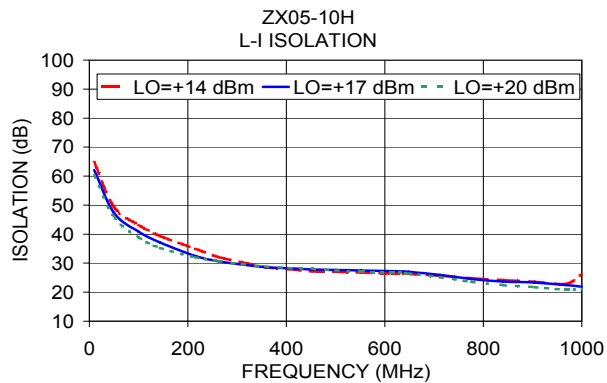
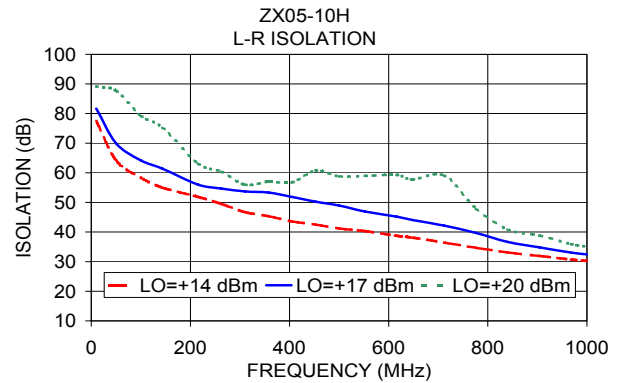
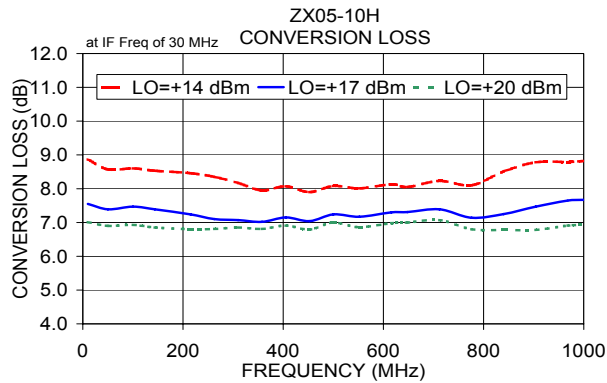


The Design Engineers Search Engine Provides ACTUAL Data Instantly From MINI-CIRCUITS At: [www.minicircuits.com](http://www.minicircuits.com)

RF/IF MICROWAVE COMPONENTS

REV. C  
M98898  
ZX05-10H  
RVN/TD/AM  
070514  
Page 1 of 2

## Performance Charts



# Frequency Mixer

# ZX05-10H

## Typical Performance Data

RF (MHz)	LO (MHz)	CONVERSION LOSS (dB)			LO (MHz)	LO-RF ISOLATION (dB)			LO-IF ISOLATION (dB)			LO (MHz)	RF (MHz)	IP-3 Input (dBm)
		@LO (dBm)				@LO (dBm)			@LO (dBm)					@LO (dBm)
		+14	+17	+20		+14	+17	+20	+14	+17	+20			+17
10.1	40.1	8.87	7.55	7.01	40.1	77.47	81.69	89.16	64.81	62.06	60.23	40.1	10.1	25.90
15.1	45.1	8.66	7.42	6.91	45.1	74.23	78.85	88.94	60.94	58.72	56.72	45.1	15.1	26.00
20.1	45.1	8.62	7.42	6.85	45.1	60.79	66.62	86.56	45.55	43.40	41.82	45.1	20.1	26.20
35.1	50.1	8.63	7.39	6.90	50.1	72.06	76.53	88.41	58.40	56.02	54.19	50.1	35.1	26.10
50.1	65.1	8.57	7.39	6.90	65.1	67.27	72.77	90.21	52.83	50.66	49.21	65.1	50.1	26.60
75.1	70.1	8.56	7.45	6.95	70.1	58.34	64.18	79.27	43.19	40.85	38.87	70.1	75.1	25.80
100.1	80.1	8.60	7.47	6.93	80.1	64.14	69.91	87.68	49.36	47.32	45.88	80.1	100.1	26.20
120.1	90.1	8.56	7.40	6.89	90.1	56.61	62.90	79.14	41.45	39.09	37.09	90.1	120.1	27.00
143.9	113.9	8.53	7.39	6.85	113.9	54.97	61.39	75.26	39.34	37.09	35.22	113.9	143.85	27.70
167.6	137.6	8.56	7.47	6.86	137.6	54.08	59.64	70.43	37.65	35.18	33.78	137.6	167.6	26.40
191.4	161.4	8.50	7.37	6.81	161.4	53.10	57.55	66.08	36.33	33.65	32.62	161.4	191.35	26.00
215.1	185.1	8.46	7.24	6.80	185.1	51.86	56.02	63.15	34.99	32.50	32.07	185.1	215.1	25.80
238.9	208.9	8.48	7.18	6.79	208.9	50.46	55.16	61.80	33.41	31.38	31.35	208.9	238.85	25.10
262.6	232.6	8.35	7.10	6.81	232.6	49.48	54.66	60.38	32.13	30.65	30.73	232.6	262.6	24.90
286.4	256.4	8.22	7.08	6.80	256.4	48.01	54.25	57.98	31.25	29.99	30.02	256.4	286.35	24.90
310.1	280.1	8.17	7.07	6.85	280.1	46.71	53.72	55.97	30.32	29.51	29.64	280.1	310.1	25.10
333.9	303.9	8.10	7.06	6.83	303.9	45.87	53.66	56.57	29.55	29.32	29.57	303.9	333.85	24.80
357.6	327.6	7.95	7.02	6.81	327.6	45.34	53.34	56.95	28.61	28.60	28.90	327.6	357.6	24.70
381.4	351.4	8.02	7.06	6.82	351.4	44.53	52.84	56.56	28.41	28.55	28.65	351.4	381.35	25.20
405.1	375.1	8.07	7.15	6.91	375.1	43.58	51.82	56.78	27.98	28.24	28.34	375.1	405.1	26.20
428.9	398.9	7.97	7.08	6.82	398.9	42.91	50.87	60.62	27.69	28.23	28.52	398.9	428.85	25.60
452.6	422.6	7.90	7.04	6.79	422.6	42.49	50.25	60.75	27.16	27.84	28.11	422.6	452.6	24.60
476.4	446.4	7.98	7.17	6.89	446.4	41.85	49.83	58.79	27.08	27.70	27.76	446.4	476.35	24.80
500.1	470.1	8.08	7.24	7.00	470.1	41.18	48.94	58.79	27.03	27.66	27.52	470.1	500.1	25.40
520.1	490.1	8.05	7.17	6.93	490.1	40.73	48.14	59.78	26.78	27.49	27.41	490.1	520.1	26.10
552.1	522.1	8.01	7.17	6.86	522.1	40.33	46.94	58.91	26.76	27.44	27.00	522.1	552.1	27.00
584.1	554.1	8.05	7.23	6.90	554.1	39.56	46.14	57.11	26.77	27.45	26.86	554.1	584.1	25.50
616.1	586.1	8.13	7.30	6.98	586.1	38.74	45.19	59.28	26.47	27.21	26.85	586.1	616.1	24.40
648.1	618.1	8.05	7.31	7.00	618.1	38.10	44.07	57.75	26.34	27.04	26.46	618.1	648.1	24.70
680.1	650.1	7.99	7.26	6.97	650.1	37.30	43.38	57.70	26.05	26.51	25.79	650.1	680.1	25.20
712.1	682.1	8.23	7.39	7.07	682.1	36.44	42.17	59.06	25.66	25.98	25.18	682.1	712.1	26.30
744.1	714.1	8.11	7.28	6.96	714.1	35.63	40.88	49.58	25.29	25.40	24.59	714.1	744.1	27.40
776.1	746.1	8.10	7.14	6.80	746.1	34.68	39.71	48.00	24.83	24.50	23.56	746.1	776.1	29.60
808.1	778.1	8.41	7.27	6.86	778.1	33.78	38.19	45.83	24.57	24.11	23.16	778.1	808.1	33.60
840.1	810.1	8.51	7.25	6.78	810.1	33.09	36.65	40.85	24.19	23.70	22.44	810.1	840.1	35.30
872.1	842.1	8.60	7.32	6.76	842.1	32.45	35.65	40.06	23.83	23.22	21.64	842.1	872.1	35.60
904.1	874.1	8.78	7.47	6.78	874.1	31.93	34.81	38.85	23.62	23.29	21.70	874.1	904.1	27.50
936.1	906.1	8.93	7.70	6.90	906.1	31.38	33.75	36.21	23.22	22.96	21.37	906.1	936.1	23.50
968.1	938.1	8.79	7.65	6.91	938.1	30.70	33.06	35.92	22.86	22.47	20.85	938.1	968.1	21.80
1000.1	970.1	8.82	7.67	6.93	970.1	30.22	32.44	35.05	26.14	21.87	21.14	970.1	1000.1	21.40

# Frequency Mixer

# ZX05-10H

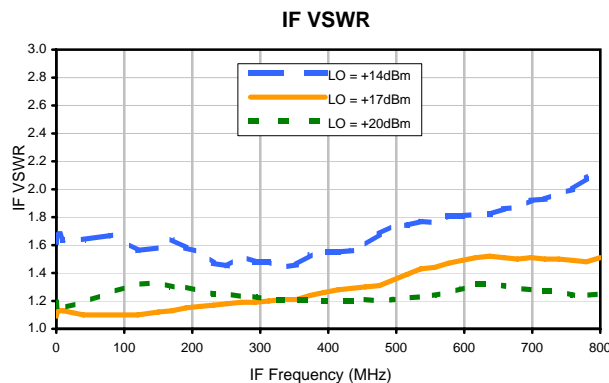
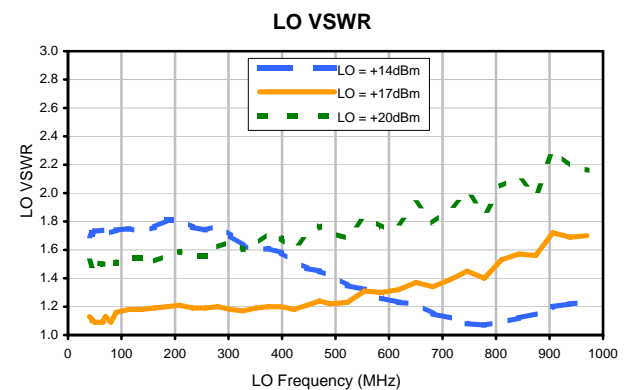
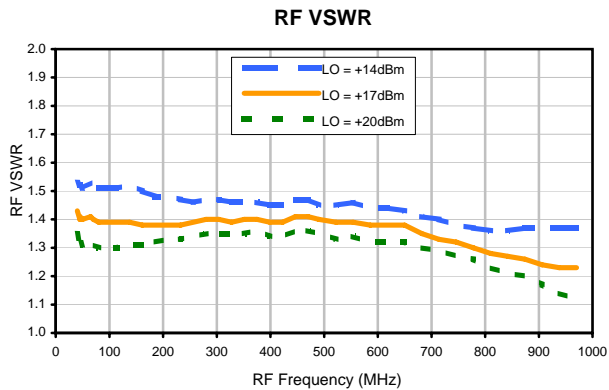
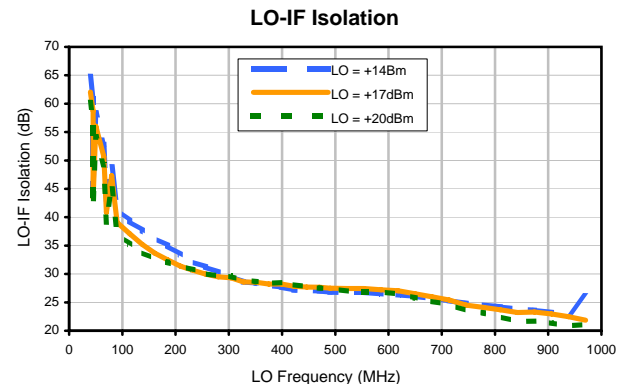
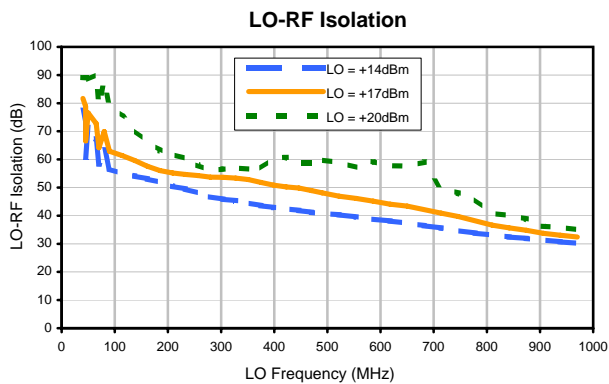
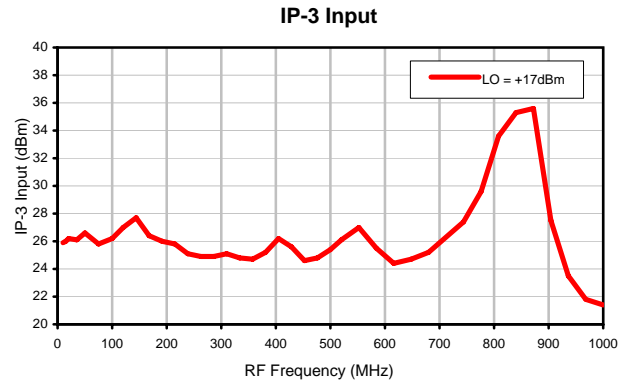
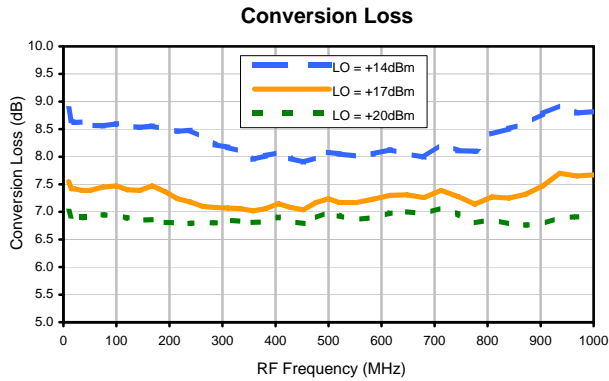
## Typical Performance Data

RF/LO (MHz)	RF VSWR (:1)			LO VSWR (:1)			IF (MHz)	IF VSWR (:1)		
	@LO (dBm)			@LO (dBm)				@LO (dBm)		
	+14	+17	+20	+14	+17	+20		+14	+17	+20
40.1	1.53	1.43	1.35	1.70	1.13	1.52	0.3	1.62	1.09	1.19
45.1	1.52	1.40	1.31	1.72	1.11	1.49	1.0	1.67	1.12	1.16
45.1	1.52	1.41	1.33	1.71	1.10	1.51	5.0	1.68	1.13	1.15
50.1	1.51	1.40	1.31	1.73	1.09	1.51	10.0	1.64	1.13	1.15
65.1	1.53	1.41	1.31	1.74	1.09	1.50	40.0	1.64	1.10	1.19
70.1	1.52	1.40	1.31	1.74	1.13	1.50	80.0	1.67	1.10	1.26
80.1	1.51	1.39	1.30	1.72	1.09	1.51	120.0	1.56	1.10	1.32
90.1	1.51	1.39	1.30	1.74	1.16	1.51	150.0	1.58	1.12	1.33
113.9	1.51	1.39	1.30	1.75	1.18	1.54	170.3	1.64	1.13	1.30
137.6	1.52	1.39	1.31	1.73	1.18	1.54	190.6	1.58	1.15	1.30
161.4	1.50	1.38	1.31	1.76	1.19	1.52	211.0	1.55	1.16	1.27
185.1	1.48	1.38	1.32	1.81	1.20	1.56	231.3	1.47	1.17	1.25
208.9	1.48	1.38	1.33	1.81	1.21	1.59	251.6	1.45	1.18	1.25
232.6	1.47	1.38	1.33	1.76	1.19	1.56	271.9	1.52	1.19	1.23
256.4	1.46	1.39	1.34	1.74	1.19	1.56	292.2	1.48	1.19	1.23
280.1	1.47	1.40	1.35	1.77	1.20	1.62	312.5	1.48	1.20	1.21
303.9	1.47	1.40	1.35	1.70	1.18	1.66	332.8	1.44	1.21	1.21
327.6	1.46	1.39	1.35	1.63	1.17	1.60	353.1	1.46	1.21	1.21
351.4	1.46	1.40	1.35	1.60	1.19	1.64	373.5	1.53	1.24	1.21
375.1	1.46	1.40	1.36	1.61	1.20	1.72	393.8	1.55	1.26	1.20
398.9	1.45	1.39	1.34	1.58	1.20	1.68	414.1	1.55	1.28	1.20
422.6	1.45	1.39	1.34	1.52	1.18	1.61	434.4	1.56	1.29	1.20
446.4	1.47	1.41	1.36	1.47	1.21	1.70	454.7	1.60	1.30	1.21
470.1	1.47	1.41	1.36	1.45	1.24	1.77	475.0	1.68	1.31	1.20
490.1	1.45	1.40	1.35	1.42	1.22	1.72	495.3	1.74	1.35	1.21
522.1	1.45	1.39	1.33	1.35	1.23	1.68	515.6	1.74	1.39	1.22
554.1	1.46	1.39	1.34	1.32	1.31	1.83	536.0	1.77	1.43	1.23
586.1	1.44	1.38	1.32	1.26	1.30	1.76	556.3	1.76	1.44	1.24
618.1	1.44	1.38	1.32	1.23	1.32	1.79	576.6	1.81	1.47	1.26
650.1	1.43	1.38	1.32	1.22	1.37	1.93	596.9	1.81	1.49	1.29
682.1	1.41	1.35	1.30	1.15	1.34	1.79	617.2	1.82	1.51	1.32
714.1	1.40	1.33	1.29	1.12	1.39	1.89	637.5	1.82	1.52	1.32
746.1	1.38	1.32	1.27	1.08	1.45	2.01	657.8	1.86	1.51	1.31
778.1	1.37	1.30	1.26	1.07	1.40	1.85	678.1	1.87	1.50	1.29
810.1	1.36	1.28	1.23	1.09	1.53	2.05	698.5	1.92	1.51	1.28
842.1	1.36	1.27	1.21	1.12	1.57	2.11	718.8	1.93	1.50	1.27
874.1	1.37	1.26	1.20	1.15	1.56	1.98	739.1	1.97	1.50	1.27
906.1	1.37	1.24	1.17	1.20	1.72	2.30	759.4	2.00	1.49	1.24
938.1	1.37	1.23	1.14	1.22	1.69	2.19	779.7	2.08	1.48	1.24
970.1	1.37	1.23	1.12	1.23	1.70	2.16	800.0	2.14	1.51	1.25

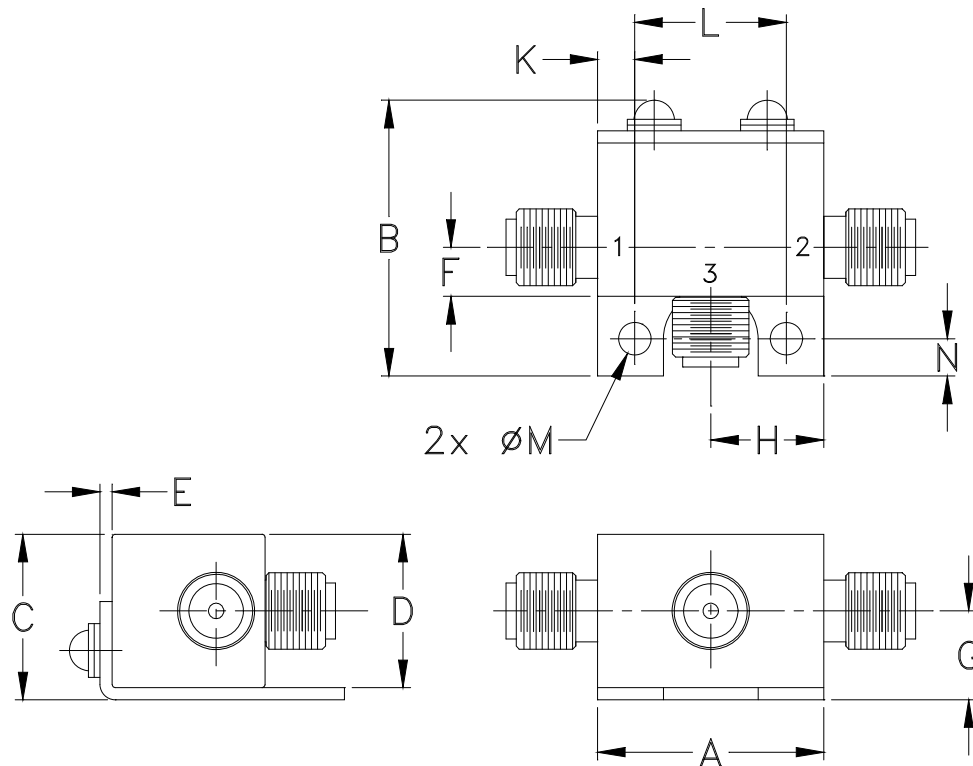
# Frequency Mixer

# ZX05-10H

## Typical Performance Curves



### Outline Dimensions



CASE #.	A	B	C	D	E	F	G	H	J	K	L	M	N	WT, GRAM
FL905	.74 (18.80)	.90 (22.86)	.54 (13.72)	.50 (12.70)	.04 (1.02)	.16 (4.06)	.29 (7.37)	.37 (9.40)	- -	.122 (3.10)	.496 (12.60)	.106 (2.69)	.122 (3.10)	20.0

**Dimensions are in inches (mm). Tolerances: 2Pl.  $\pm .03$ ; 3Pl.  $\pm .015$ .**

**Tolerance on hole size and interaxes dimensions to be  $\pm .005$ .**

#### Notes:

1. Case material: Brass.
2. Case finish: Nickel plate.

**Mini-Circuits®**

INTERNET <http://www.minicircuits.com>

P.O. Box 350166, Brooklyn, New York 11235-0003 (718) 934-4500 Fax (718) 332-4661

Distribution Centers NORTH AMERICA 800-654-7949 • 417-335-5935 • Fax 417-335-5945 • EUROPE 44-1252-832600 • Fax 44-1252-837010

Mini-Circuits ISO 9001 & ISO 14001 Certified



All Mini-Circuits products are manufactured under exacting quality assurance and control standards, and are capable of meeting published specifications after being subjected to any or all of the following physical and environmental test.

Specification	Test/Inspection Condition	Reference/Spec
Operating Temperature	-40° to 85°C	Individual Model Data Sheet
Storage Temperature	-55° to 100° C Ambient Environment	Individual Model Data Sheet
Barometric Pressure	100,000 Feet	MIL-STD-202, Method 105, Condition D
Humidity	90% RH, 65°C Units may require bake-out after humidity to restore full performance.	MIL-STD-202, Method 103
Thermal Shock	-65° to 125°C, 5 cycles	MIL-STD-202, Method 107, Condition B
Vibration (High Frequency)	20g peak, 10-2000 Hz, 12 times in each of three perpendicular directions (total 36)	MIL-STD-202, Method 204, Condition D
Mechanical Shock	100g, 6ms sawtooth, 3 shocks each direction 3 axes (total 18)	MIL-STD-202, Method 213, Condition I