

Coaxial Reflectionless High Pass Filter

ZXHF Series

50Ω DC to 30 GHz



The Big Deal

- Patented design eliminates in band spurs
- Pass band cut-off up to 18.3 GHz
- Stop band up to 30 GHz

Product Overview

Mini-Circuits' ZXHF Series reflectionless filters employs a novel filter topology which absorbs and terminates stop band signals internally rather than reflecting them back to the source. Reflectionless filters eliminate stopband reflections, allowing them to be paired with sensitive devices and used in applications that otherwise require circuits such as isolation amplifiers or attenuators. This is developed in a new broadband, stable connectorized package.

Key Features

| Feature | Advantages |
|---|---|
| Easy integration with sensitive reflective components, e.g. mixers, multipliers | Reflectionless filters absorb unwanted signals, preventing reflections back to the source. This reduces generation of additional unwanted signals without the need for extra components like attenuators, improving system dynamic range. |
| Cascadable | Reflectionless filters can be cascaded in multiple sections to provide sharper and higher attenuation, while also preventing any standing waves that could affect pass band signals. |
| Excellent stability over temperature | Ensures minimal variation in electrical performance across temperature. |
| Operating temperature up to 105°C | Suitable for operation close to high power components. |
| Broadband connectorized package | The connectorized package works well even in high frequencies and easy to interface with other devices. This is well suited for test setups. |

Notes

- A. Performance and quality attributes and conditions not expressly stated in this specification document are intended to be excluded and do not form a part of this specification document.
B. Electrical specifications and performance data contained in this specification document are based on Mini-Circuit's applicable established test performance criteria and measurement instructions.
C. The parts covered by this specification document are subject to Mini-Circuits standard limited warranty and terms and conditions (collectively, "Standard Terms"); Purchasers of this part are entitled to the rights and benefits contained therein. For a full statement of the Standard Terms and the exclusive rights and remedies thereunder, please visit Mini-Circuits' website at www.minicircuits.com/MCLStore/terms.jsp



Coaxial Reflectionless High Pass Filter

ZXHF-K1352+

50Ω 13.5 to 30 GHz



Features

- Match to 50Ω in the stop band, eliminates undesired reflections
- Cascadable
- Temperature stable, up to 105°C
- Protected by US Patent No. 8,392,495

Generic photo used for illustration purposes only

CASE STYLE: UK3042
Connectors Model
2.92mm-F ZXHF-K1352+

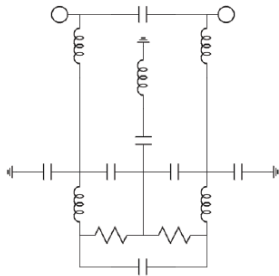
Electrical Specifications at 25°C

| Parameter | F# | Frequency (MHz) | Min. | Typ. | Max. | Unit | |
|-----------|----------------|-----------------|---------------|------|------|------|----|
| Stop Band | Rejection | DC-F1 | DC - 3000 | - | 6.9 | - | dB |
| | | F1-F2 | 3000 - 10500 | 11 | 13.8 | - | dB |
| | Freq. Cut-Off | F3 | 12700 | - | 3.2 | - | dB |
| | VSWR | DC-F1 | DC - 3000 | - | 2.7 | - | :1 |
| | | F1-F2 | 3000 - 10500 | - | 1.8 | - | :1 |
| Pass Band | Insertion Loss | F4-F5 | 13500 - 20000 | - | 3.0 | - | dB |
| | | F5-F6 | 20000 - 30000 | - | 2.5 | - | dB |
| | VSWR | F4-F5 | 13500 - 20000 | - | 2.0 | - | :1 |
| | | F5-F6 | 20000 - 30000 | - | 1.9 | - | :1 |

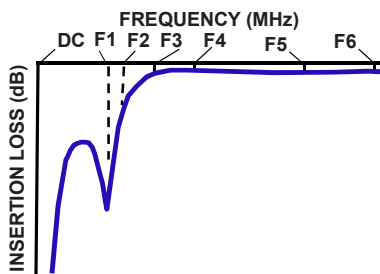
Applications

- KU Band Satellite Transmission
- Microwave Radio
- Military and Space

Functional Schematic



Typical Frequency Response



Absolute Maximum Ratings³

| Parameter | Ratings |
|---|-----------------|
| Operating Temperature | -55°C to +105°C |
| Storage Temperature | -55°C to +105°C |
| RF Power Input, Passband (F4-F6) ¹ | 1.0W at 25°C |
| RF Power Input, Stopband (DC-F4) ² | 0.15W at 25°C |

¹ Passband rating derates linearly to 0.5W at 105°C ambient

² Stopband rating derates linearly to 0.08W at 105°C ambient

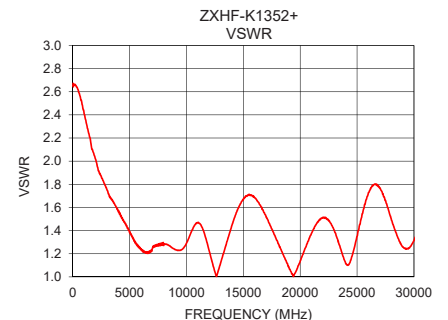
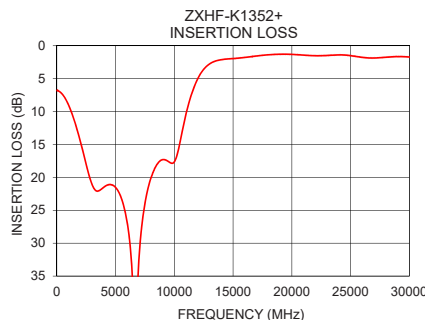
³ Permanent damage may occur if any of these limits are exceeded

ESD rating

Human body model (HBM): Class 1A(250 to <500 V) in accordance with ANSI/ESD STM 5.1-2001

Typical Performance Data at 25°C

| Frequency (MHz) | Insertion Loss (dB) | VSWR (:1) |
|-----------------|---------------------|-----------|
| 25 | 6.83 | 2.67 |
| 100 | 6.81 | 2.66 |
| 500 | 7.43 | 2.61 |
| 1500 | 11.42 | 2.21 |
| 2000 | 14.50 | 2.02 |
| 3000 | 21.08 | 1.76 |
| 5000 | 21.53 | 1.38 |
| 10000 | 17.64 | 1.29 |
| 10500 | 14.52 | 1.41 |
| 11000 | 10.34 | 1.47 |
| 12500 | 3.58 | 1.04 |
| 12700 | 3.19 | 1.02 |
| 13500 | 2.32 | 1.28 |
| 14000 | 2.12 | 1.45 |
| 14500 | 2.01 | 1.58 |
| 15000 | 1.95 | 1.67 |
| 16000 | 1.77 | 1.68 |
| 20000 | 1.31 | 1.14 |
| 25000 | 1.50 | 1.35 |
| 30000 | 1.72 | 1.31 |



+RoHS Compliant

The +Suffix identifies RoHS Compliance. See our web site for RoHS Compliance methodologies and qualifications

Notes

- Performance and quality attributes and conditions not expressly stated in this specification document are intended to be excluded and do not form a part of this specification document.
- Electrical specifications and performance data contained in this specification document are based on Mini-Circuit's applicable established test performance criteria and measurement instructions.
- The parts covered by this specification document are subject to Mini-Circuits standard limited warranty and terms and conditions (collectively, "Standard Terms"); Purchasers of this part are entitled to the rights and benefits contained therein. For a full statement of the Standard Terms and the exclusive rights and remedies thereunder, please visit Mini-Circuits' website at www.minicircuits.com/MCLStore/terms.jsp



www.minicircuits.com P.O. Box 350166, Brooklyn, NY 11235-0003 (718) 934-4500 sales@minicircuits.com

REV. A
ECO-005038
ZXHF-K1352+
EDU3826
URJ
201127
Page 2 of 3

Coaxial Connections

| | |
|----------|---------------|
| PORT - 1 | 2.92mm-Female |
| PORT - 2 | 2.92mm-Female |

Outline Drawing



Outline Dimensions (inch/mm)

| A | B | C | D | E | F |
|------|------|------|------|-------|-------|
| .68 | .60 | .39 | .200 | .10 | .400 |
| 17.1 | 15.2 | 10.0 | 5.08 | 2.5 | 10.16 |
| G | H | J | K | Wt. | |
| .24 | .070 | .22 | .30 | grams | |
| 6.0 | 1.78 | 5.5 | 7.6 | 24 | |

Note: Please refer to case style drawing for details

Notes

- A. Performance and quality attributes and conditions not expressly stated in this specification document are intended to be excluded and do not form a part of this specification document.
- B. Electrical specifications and performance data contained in this specification document are based on Mini-Circuit's applicable established test performance criteria and measurement instructions.
- C. The parts covered by this specification document are subject to Mini-Circuits standard limited warranty and terms and conditions (collectively, "Standard Terms"); Purchasers of this part are entitled to the rights and benefits contained therein. For a full statement of the Standard Terms and the exclusive rights and remedies thereunder, please visit Mini-Circuits' website at www.minicircuits.com/MCLStore/terms.jsp

Coaxial Reflectionless High Pass Filter

ZXHF-K1352+

Typical Performance Data

| FREQ. (MHz) | INSERTION LOSS | | | INPUT RETURN LOSS | | | OUTPUT RETURN LOSS | | |
|--------------------|----------------|--------|---------|-------------------|--------|---------|--------------------|--------|---------|
| | (dB) | | | (dB) | | | (dB) | | |
| | @-55°C | @+25°C | @+105°C | @-55°C | @+25°C | @+105°C | @-55°C | @+25°C | @+105°C |
| 25 | 6.80 | 6.83 | 6.85 | 6.83 | 6.83 | 6.82 | 6.86 | 6.85 | 6.84 |
| 50 | 6.70 | 6.72 | 6.74 | 6.91 | 6.92 | 6.90 | 6.92 | 6.91 | 6.91 |
| 100 | 6.78 | 6.81 | 6.83 | 6.85 | 6.87 | 6.86 | 6.87 | 6.87 | 6.86 |
| 400 | 7.16 | 7.22 | 7.27 | 6.90 | 6.94 | 6.95 | 6.89 | 6.93 | 6.94 |
| 500 | 7.35 | 7.43 | 7.48 | 6.97 | 7.02 | 7.05 | 6.95 | 6.99 | 7.01 |
| 600 | 7.59 | 7.67 | 7.73 | 7.05 | 7.12 | 7.16 | 7.02 | 7.07 | 7.11 |
| 750 | 8.00 | 8.11 | 8.18 | 7.19 | 7.28 | 7.33 | 7.14 | 7.21 | 7.27 |
| 800 | 8.15 | 8.26 | 8.34 | 7.26 | 7.35 | 7.42 | 7.21 | 7.28 | 7.35 |
| 1000 | 8.86 | 9.00 | 9.11 | 7.55 | 7.67 | 7.77 | 7.45 | 7.55 | 7.65 |
| 1200 | 9.72 | 9.89 | 10.02 | 7.84 | 7.99 | 8.13 | 7.73 | 7.86 | 7.99 |
| 1400 | 10.70 | 10.89 | 11.03 | 8.15 | 8.34 | 8.52 | 8.01 | 8.18 | 8.33 |
| 2000 | 14.22 | 14.50 | 14.71 | 9.13 | 9.44 | 9.69 | 9.08 | 9.34 | 9.58 |
| 2100 | 14.88 | 15.17 | 15.39 | 9.31 | 9.63 | 9.89 | 9.29 | 9.57 | 9.83 |
| 2200 | 15.57 | 15.88 | 16.12 | 9.53 | 9.87 | 10.13 | 9.56 | 9.87 | 10.14 |
| 2300 | 16.29 | 16.61 | 16.86 | 9.72 | 10.07 | 10.34 | 9.77 | 10.11 | 10.39 |
| 2400 | 17.00 | 17.33 | 17.59 | 9.84 | 10.20 | 10.47 | 9.92 | 10.27 | 10.57 |
| 2500 | 17.70 | 18.04 | 18.31 | 9.97 | 10.36 | 10.64 | 10.10 | 10.47 | 10.78 |
| 3000 | 20.73 | 21.08 | 21.33 | 10.81 | 11.24 | 11.54 | 11.19 | 11.60 | 11.92 |
| 3500 | 21.88 | 22.09 | 22.22 | 11.72 | 12.14 | 12.44 | 12.25 | 12.71 | 13.02 |
| 4000 | 21.35 | 21.49 | 21.56 | 12.77 | 13.16 | 13.47 | 13.33 | 13.79 | 14.11 |
| 4500 | 20.94 | 21.09 | 21.18 | 13.86 | 14.34 | 14.66 | 14.29 | 14.78 | 15.13 |
| 5000 | 21.32 | 21.53 | 21.68 | 15.22 | 15.89 | 16.29 | 15.06 | 15.61 | 16.00 |
| 5500 | 22.89 | 23.21 | 23.46 | 16.94 | 17.91 | 18.53 | 15.94 | 16.69 | 17.24 |
| 6000 | 26.48 | 27.00 | 27.42 | 18.26 | 19.43 | 20.45 | 16.57 | 17.52 | 18.25 |
| 6500 | 36.38 | 37.84 | 38.90 | 18.95 | 20.24 | 21.40 | 17.67 | 18.90 | 19.85 |
| 7000 | 32.79 | 32.08 | 31.31 | 18.16 | 19.20 | 20.08 | 18.11 | 19.37 | 20.31 |
| 7500 | 24.03 | 23.95 | 23.77 | 17.43 | 18.44 | 19.23 | 18.55 | 19.72 | 20.81 |
| 8000 | 20.02 | 20.13 | 20.13 | 17.39 | 18.45 | 19.26 | 19.10 | 20.07 | 21.18 |
| 8100 | 19.54 | 19.68 | 19.71 | 17.15 | 18.12 | 18.86 | 18.70 | 19.50 | 20.50 |
| 8200 | 19.04 | 19.20 | 19.25 | 17.21 | 18.17 | 18.94 | 18.69 | 19.40 | 20.35 |
| 8700 | 17.37 | 17.65 | 17.80 | 18.16 | 18.94 | 19.85 | 18.36 | 18.73 | 19.37 |
| 9000 | 16.98 | 17.30 | 17.49 | 18.92 | 19.50 | 20.49 | 17.75 | 17.99 | 18.34 |
| 9100 | 16.96 | 17.30 | 17.48 | 19.11 | 19.64 | 20.58 | 17.53 | 17.76 | 18.06 |
| 9500 | 17.31 | 17.60 | 17.71 | 19.55 | 19.71 | 20.13 | 16.50 | 16.72 | 16.82 |
| 9700 | 17.65 | 17.82 | 17.78 | 19.07 | 19.23 | 19.25 | 16.03 | 16.28 | 16.33 |
| 10000 | 17.89 | 17.64 | 17.23 | 17.68 | 17.94 | 17.78 | 15.30 | 15.71 | 15.74 |
| 10200 | 17.36 | 16.80 | 16.18 | 16.48 | 16.90 | 16.77 | 14.87 | 15.37 | 15.52 |
| 10500 | 15.20 | 14.52 | 13.87 | 14.78 | 15.46 | 15.43 | 14.49 | 15.16 | 15.49 |
| 11000 | 10.71 | 10.34 | 9.94 | 13.52 | 14.45 | 14.91 | 14.83 | 15.81 | 16.54 |
| 11600 | 6.71 | 6.66 | 6.53 | 14.95 | 16.17 | 17.32 | 17.33 | 18.85 | 20.17 |
| 12000 | 4.89 | 4.98 | 4.96 | 18.37 | 19.98 | 22.10 | 20.74 | 22.80 | 24.97 |
| 12700 | 2.94 | 3.19 | 3.31 | 38.59 | 39.24 | 30.86 | 26.30 | 27.64 | 27.42 |
| 13000 | 2.47 | 2.76 | 2.91 | 26.80 | 24.94 | 22.97 | 24.12 | 23.89 | 23.10 |
| 13500 | 1.99 | 2.32 | 2.50 | 19.04 | 18.17 | 17.47 | 19.25 | 18.75 | 18.23 |
| 14000 | 1.77 | 2.12 | 2.32 | 15.31 | 14.77 | 14.44 | 15.91 | 15.53 | 15.21 |
| 14500 | 1.65 | 2.01 | 2.20 | 13.25 | 12.91 | 12.77 | 13.84 | 13.56 | 13.41 |
| 15000 | 1.60 | 1.95 | 2.15 | 12.13 | 12.01 | 11.92 | 12.59 | 12.45 | 12.34 |
| 15500 | 1.52 | 1.87 | 2.06 | 11.51 | 11.60 | 11.48 | 11.93 | 11.94 | 11.86 |
| 16000 | 1.43 | 1.77 | 1.96 | 11.62 | 11.89 | 11.76 | 11.78 | 11.93 | 11.81 |
| 16500 | 1.34 | 1.67 | 1.87 | 12.16 | 12.53 | 12.36 | 12.23 | 12.45 | 12.31 |
| 17000 | 1.23 | 1.55 | 1.75 | 13.29 | 13.73 | 13.55 | 13.03 | 13.30 | 13.08 |
| 17500 | 1.13 | 1.45 | 1.65 | 14.88 | 15.29 | 15.06 | 14.47 | 14.77 | 14.50 |
| 20000 | 0.95 | 1.31 | 1.49 | 24.28 | 23.90 | 24.24 | 23.63 | 23.22 | 23.13 |
| 21000 | 1.04 | 1.42 | 1.59 | 15.99 | 15.99 | 16.95 | 15.94 | 15.88 | 16.86 |
| 22000 | 1.15 | 1.51 | 1.66 | 13.17 | 13.82 | 14.95 | 13.39 | 13.97 | 15.09 |
| 22500 | 1.15 | 1.50 | 1.66 | 13.24 | 14.18 | 15.41 | 13.52 | 14.39 | 15.71 |
| 23000 | 1.12 | 1.48 | 1.65 | 14.20 | 15.56 | 16.97 | 14.61 | 15.95 | 17.57 |
| 24000 | 1.00 | 1.39 | 1.60 | 22.28 | 25.26 | 25.58 | 24.01 | 27.64 | 29.24 |
| 26000 | 1.30 | 1.75 | 2.02 | 11.39 | 11.47 | 11.19 | 11.54 | 11.64 | 11.29 |
| 30000 | 1.18 | 1.72 | 1.99 | 19.25 | 17.38 | 16.99 | 19.49 | 17.93 | 17.70 |



P.O. Box 350166, Brooklyn, New York 11235-0003 (718) 934-4500 • Fax (718) 332-4661 For detailed performance specs & shopping online see Mini-Circuits web site



The Design Engineers Search Engine Provides ACTUAL Data Instantly From MINI-CIRCUITS At: www.minicircuits.com

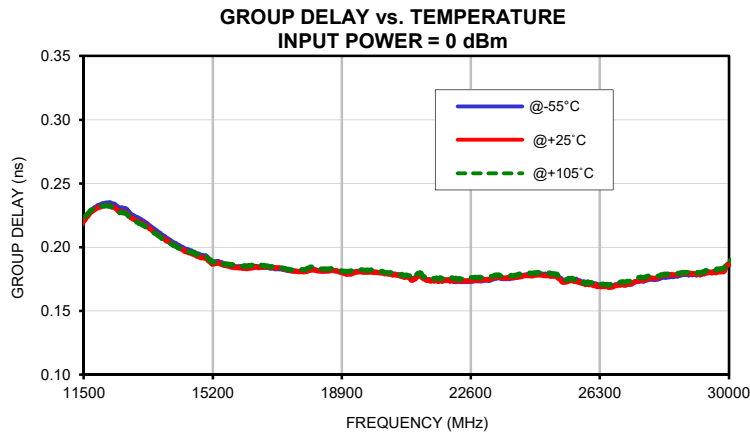
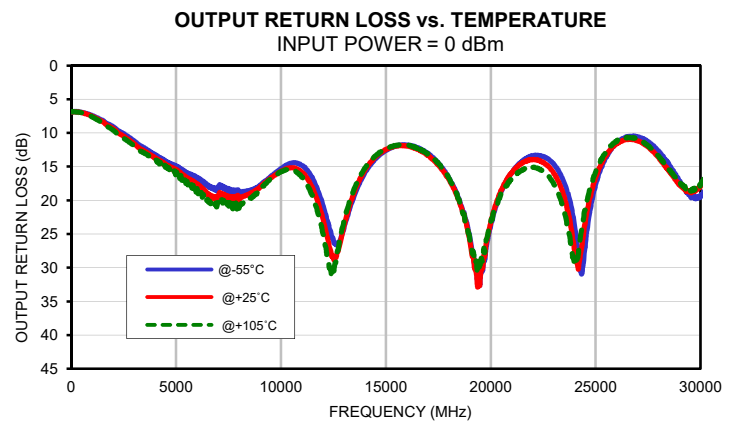
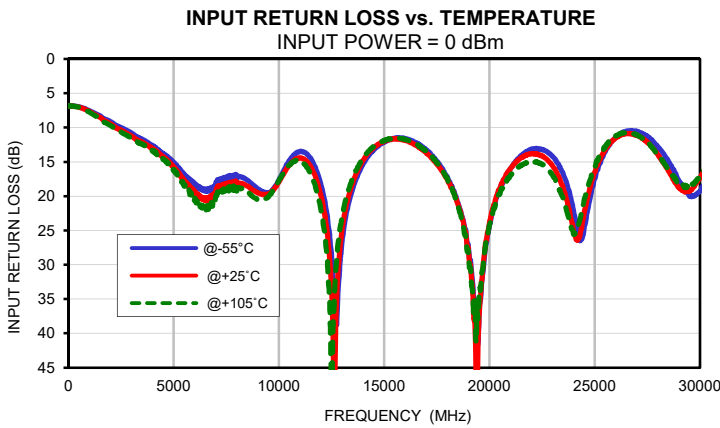
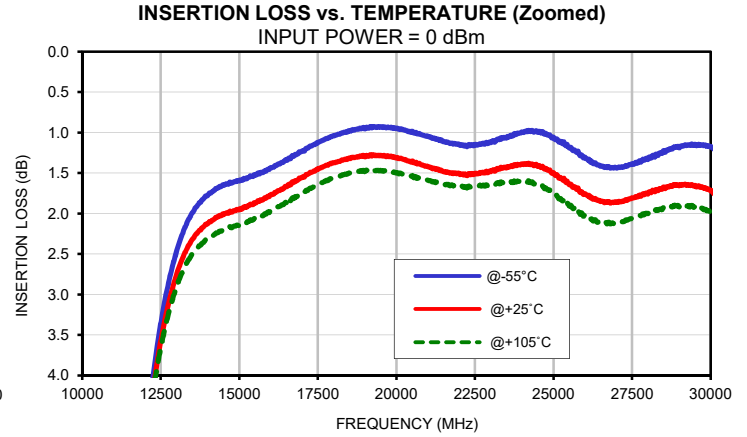
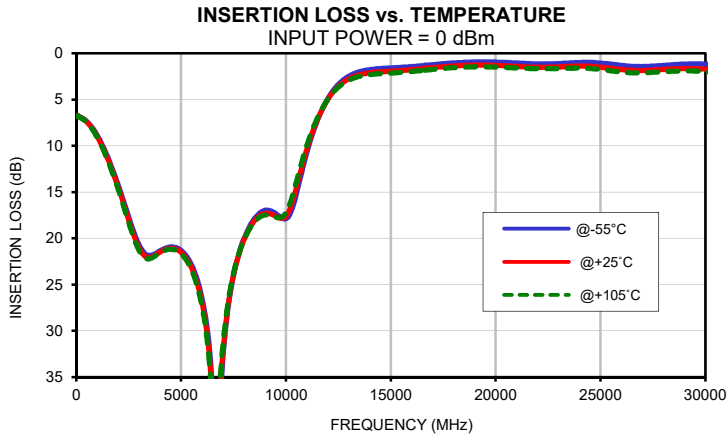
IF/RF MICROWAVE COMPONENTS

REV. OR
ZXHF-K1352+
200706

Typical Performance Data

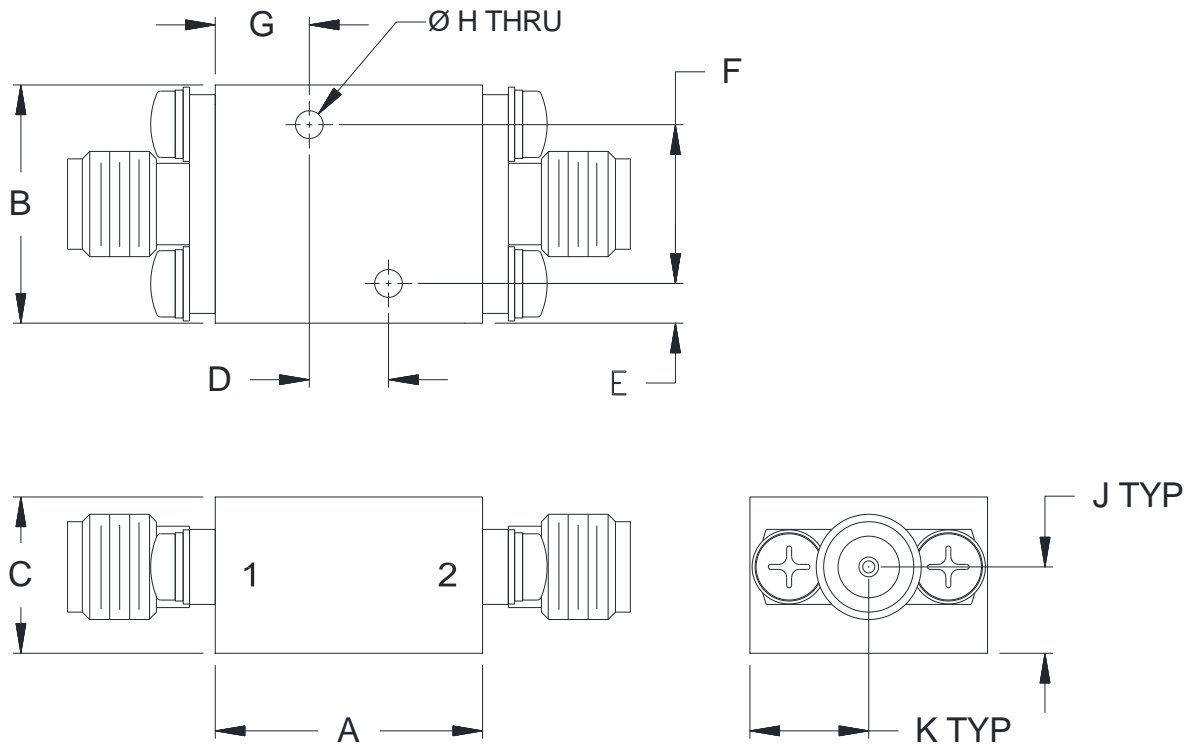
| FREQ. (MHz) | GROUP DELAY | | |
|--------------------|-------------|--------|---------|
| | (nsec) | | |
| | @-55°C | @+25°C | @+105°C |
| 13500 | 0.21 | 0.21 | 0.21 |
| 13800 | 0.21 | 0.21 | 0.21 |
| 14100 | 0.20 | 0.20 | 0.20 |
| 14400 | 0.20 | 0.20 | 0.20 |
| 14700 | 0.20 | 0.19 | 0.20 |
| 15000 | 0.19 | 0.19 | 0.19 |
| 15300 | 0.19 | 0.19 | 0.19 |
| 15600 | 0.19 | 0.19 | 0.19 |
| 15900 | 0.18 | 0.18 | 0.19 |
| 16200 | 0.18 | 0.18 | 0.19 |
| 16500 | 0.18 | 0.18 | 0.19 |
| 16800 | 0.18 | 0.18 | 0.19 |
| 17100 | 0.18 | 0.18 | 0.18 |
| 17400 | 0.18 | 0.18 | 0.18 |
| 17700 | 0.18 | 0.18 | 0.18 |
| 18000 | 0.18 | 0.18 | 0.18 |
| 18300 | 0.18 | 0.18 | 0.18 |
| 18600 | 0.18 | 0.18 | 0.18 |
| 18900 | 0.18 | 0.18 | 0.18 |
| 19200 | 0.18 | 0.18 | 0.18 |
| 19500 | 0.18 | 0.18 | 0.18 |
| 19800 | 0.18 | 0.18 | 0.18 |
| 20100 | 0.18 | 0.18 | 0.18 |
| 20400 | 0.18 | 0.18 | 0.18 |
| 20700 | 0.18 | 0.18 | 0.18 |
| 21000 | 0.18 | 0.18 | 0.18 |
| 21300 | 0.17 | 0.17 | 0.18 |
| 21600 | 0.17 | 0.17 | 0.18 |
| 21900 | 0.17 | 0.17 | 0.18 |
| 22200 | 0.17 | 0.17 | 0.18 |
| 22500 | 0.17 | 0.17 | 0.18 |
| 22800 | 0.17 | 0.17 | 0.18 |
| 23100 | 0.17 | 0.17 | 0.18 |
| 23400 | 0.18 | 0.18 | 0.18 |
| 23700 | 0.18 | 0.18 | 0.18 |
| 24000 | 0.18 | 0.18 | 0.18 |
| 24300 | 0.18 | 0.18 | 0.18 |
| 24600 | 0.18 | 0.18 | 0.18 |
| 24900 | 0.18 | 0.18 | 0.18 |
| 25200 | 0.17 | 0.17 | 0.17 |
| 25500 | 0.18 | 0.17 | 0.18 |
| 25800 | 0.17 | 0.17 | 0.17 |
| 26100 | 0.17 | 0.17 | 0.17 |
| 26400 | 0.17 | 0.17 | 0.17 |
| 26700 | 0.17 | 0.17 | 0.17 |
| 27000 | 0.17 | 0.17 | 0.17 |
| 27300 | 0.17 | 0.17 | 0.18 |
| 27600 | 0.17 | 0.17 | 0.18 |
| 28000 | 0.18 | 0.18 | 0.18 |
| 29000 | 0.18 | 0.18 | 0.18 |
| 30000 | 0.19 | 0.19 | 0.19 |

Typical Performance Curves



Outline Dimensions

UK3042



| CASE# | A | B | C | D | E | F |
|--------|---------------|---------------|---------------|----------------|--------------|-----------------|
| UK3042 | .68 (17.1) | .60 (15.2) | .39 (10.0) | .200 (5.08) | .10 (2.5) | .400 (10.16) |

| CASE# | G | H | J | K | WT.GRAMS |
|--------|--------------|----------------|--------------|--------------|----------|
| UK3042 | .24 (6.0) | .070 (1.78) | .22 (5.5) | .30 (7.6) | 24 |

Dimensions are in inches (mm). Tolerances: 2 Pl. $\pm .050$; 3 Pl. $\pm .015$

Notes:

1. Case material: Brass alloy.
2. Case Finish:
 - a. Case & Cover of the units –Gold plating.
3. Refer to the individual model data sheet for the type of connectors available.



P.O. Box 350166, Brooklyn, New York 11235-0003 (718) 934-4500 Fax (718) 332-4661 For detailed performance specs & shopping online see Mini-Circuits web site



The Design Engineers Search Engine Provides ACTUAL Data Instantly From MINI-CIRCUITS At: www.minicircuits.com

RF/IF MICROWAVE COMPONENTS

All Mini-Circuits products are manufactured under exacting quality assurance and control standards, and are capable of meeting published specifications after being subjected to any or all of the following physical and environmental test.

| Specification | Test/Inspection Condition | Reference/Spec |
|-----------------------|--------------------------------------|-----------------------------|
| Operating Temperature | -55° to 105°C Ambient Environment | Individual Model Data Sheet |
| Storage Temperature | -55° to 105°C Ambient Environment | Individual Model Data Sheet |