

Application Note on

Surface Mount LTCC Quadrature Splitters

**Lu. Chen
Daxiong J.**

**Mini-Circuits
Engineering Department,
P.O. Box 350166,
Brooklyn, NY 11235**

Introduction

Transmission line 90° splitters (also called quadrature splitters) are quarter-wave in length. Thus, the overall length is dictated by the frequency of operation. Folding the line like a meander or like a spiral can reduce the mechanical length. Interaction of transmission lines in various layers and between the folded lines can cause problems unless design is done well, and it is not simple. Full electromagnetic analysis has to be performed to optimize the performance to account for the interaction effects. Such splitters can now be realized using LTCC (Low Temperature Co-fired Ceramic) technology. LTCC technology uses thin layers of ceramic on which conductors are printed using noble metals. Various layers are bonded to each other by firing around 850° C. This technique provides two important properties. First, insertion loss is lower than that can be realized in a conventional high temperature ceramic technology, as the noble metals provide lower loss. Second, it provides a hermetic seal. Hence, these splitters are ideal for demanding environments and applications such as military. But, they are equally usable in commercial environments due to their low cost. Use of ceramic as material helps heat dissipation and performance variation over temperature. For the QBA-07, the package consists of ten leads attached to the substrate, forming a robust and reliable assembly. These leads are solder plated for excellent solderability. Figure 1 is a photograph of the splitter and fig 2 shows an X-ray view.

Performance

Requiring 0.25 by 0.3 inch of PC board mounting area, the low profile (0.050 in) QBA-07 splitter operates from 340 to 680 MHz. The average insertion loss is typically 0.8 dB across the full band, amplitude balance is 0.7dB, with phase unbalance of 3 degrees. Isolation is 22 dB across the band. As mentioned before, one of the major advantages of LTCC is the stability of performance over temperature range. Variation is typically of the order of 0.1dB for insertion loss, 1 dB for isolation, and 0.5° for phase unbalance over -40° C to 85° C. Recommended footprint is provided in the data sheet of the splitter and can be down loaded from the Mini-Circuits website, <http://www.minicircuits.com> in “What is new”. Table I shows the specifications of the other splitters available in this family.

These splitters can operate up to 25 watts of input power, enabling their use in moderate to high power circuits. The solder melting temperature determines power handling of these splitters. The unit itself can withstand much higher power. Power capability tests were conducted on a similar splitter in the series, QBA-12N, and indicate that the unit is capable of handling greater power than rated (50W) at room temperature. With 120W of RF input power, the leads became detached from the motherboard due to the melting of the solder connection. The unit was reattached, and it performed as before with no noticeable change in performance. Continuous operation of this splitter at 50W for a week indicated no performance degradation.

Conclusion

LTCC quadrature splitters present a major technological advance by offering improvements in performance, size, power handling capability, and temperature stability. In addition, availability is off the shelf and they are price competitive for both military and commercial environments.

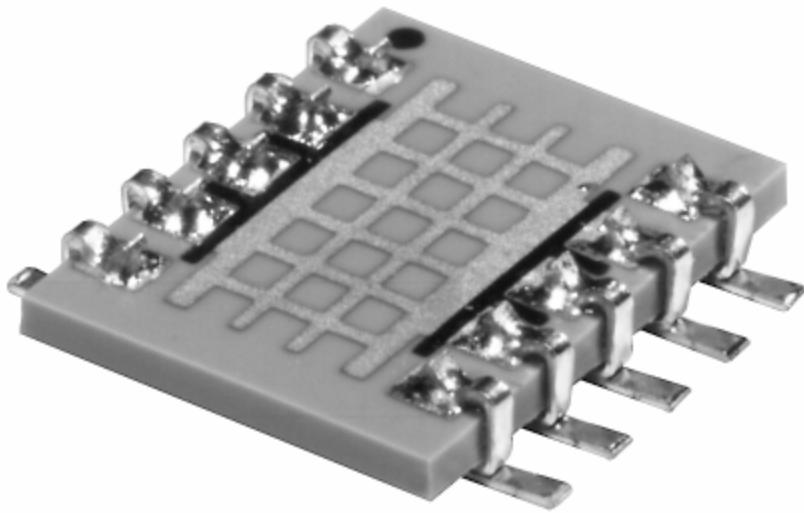


Fig 1: LTCC Power Splitter

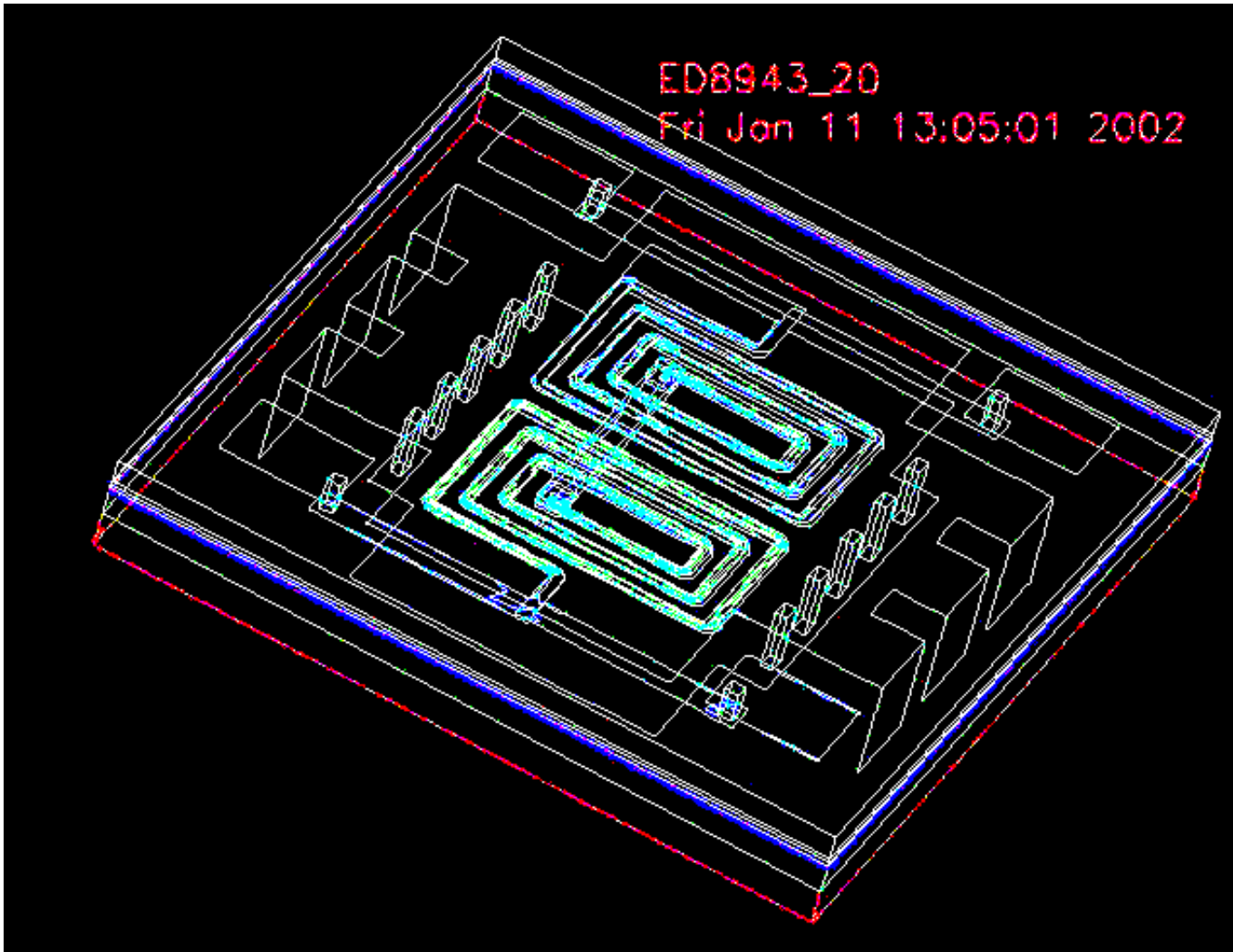


Fig2: X-Ray view of the Splitter

Table I ELECTRICAL SPECIFICATIONS

MODEL NO.	FREQ. RANGE (MHz)	ISOLATION (dB)		INSERTION LOSS † (dB)			PHASE UNBALANCE (Deg.)	AMPLITUDE UNBALANCE (dB)	POWER (W) below 25°C	PRICE \$ Qty. (10-49)
		Typ.	Min.	fL	fU	SIGMA	Max	Max		
				AVG.	AVG.					
QBA-07	340-680	22	16	0.8	--	0.1	7.0	2.0	21**	6.95
	340-530	23	18	0.5	--	0.1	4.0	2.0	27*	
QBA-12N	800-900	28	20	0.25	0.30	.02	3.0	1.0	50	6.95
QBA-12	800-1200	23	14	0.25	0.44	.02	6.0	1.2	50	6.95
QBA-20	1800-2000	23	18	0.47	0.54	.02	4.0	0.7	25	6.95
QBA-20W	1500-2200	23	16	0.41	0.58	.02	5.0	1.2	25	6.95
QBA-24	1900-2400	21	17	0.54	0.71	.02	6.0	0.8	20	6.95
QBA-24W	1700-2400	21	15	0.49	0.71	.02	6.0	1.2	20	6.95

† Includes test fixture losses.
* Derate linearly to 12W at 100°C
** Derate linearly to 9W at 100°C

IMPORTANT NOTICE

© 2015 Mini-Circuits

This document is provided as an accommodation to Mini-Circuits customers in connection with Mini-Circuits parts only. In that regard, this document is for informational and guideline purposes only. Mini-Circuits assumes no responsibility for errors or omissions in this document or for any information contained herein.

Mini-Circuits may change this document or the Mini-Circuits parts referenced herein (collectively, the "Materials") from time to time, without notice. Mini-Circuits makes no commitment to update or correct any of the Materials, and Mini-Circuits shall have no responsibility whatsoever on account of any updates or corrections to the Materials or Mini-Circuits' failure to do so.

Mini-Circuits customers are solely responsible for the products, systems, and applications in which Mini-Circuits parts are incorporated or used. In that regard, customers are responsible for consulting with their own engineers and other appropriate professionals who are familiar with the specific products and systems into which Mini-Circuits' parts are to be incorporated or used so that the proper selection, installation/integration, use and safeguards are made. Accordingly, Mini-Circuits assumes no liability therefor.

In addition, your use of this document and the information contained herein is subject to Mini-Circuits' standard terms of use, which are available at Mini-Circuits' website at www.minicircuits.com/homepage/terms_of_use.html.

Mini-Circuits and the Mini-Circuits logo are registered trademarks of Scientific Components Corporation d/b/a Mini-Circuits. All other third-party trademarks are the property of their respective owners. A reference to any third-party trademark does not constitute or imply any endorsement, affiliation, sponsorship, or recommendation: (i) by Mini-Circuits of such third-party's products, services, processes, or other information; or (ii) by any such third-party of Mini-Circuits or its products, services, processes, or other information.